

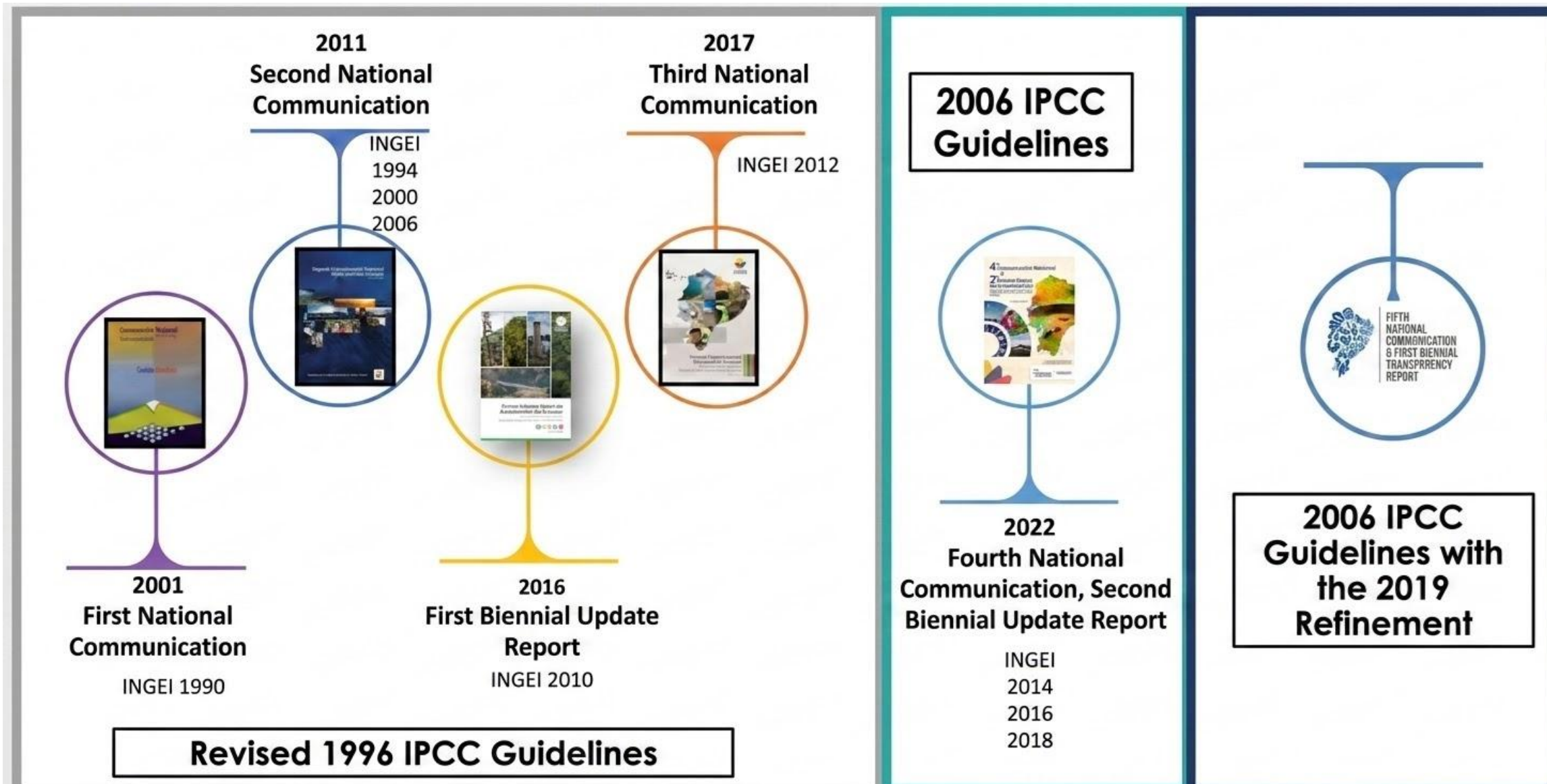
FACILITATIVE MULTILATERAL CONSIDERATION OF PROGRESS

5TH NATIONAL COMMUNICATION & 1st BIENNIAL TRANSPARENCY REPORT

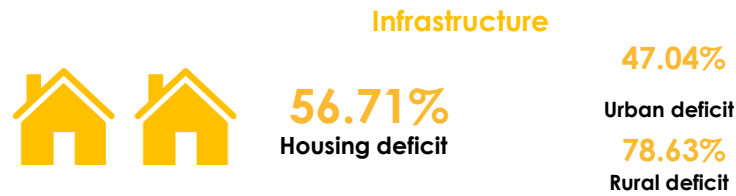
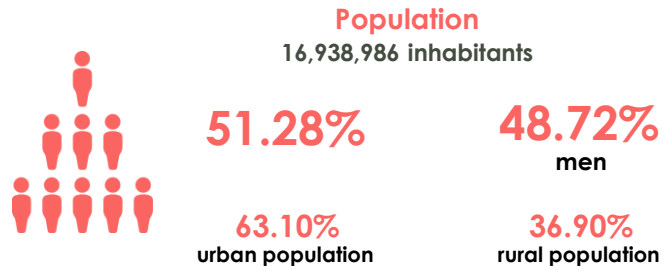
ECUADOR

Bonn, Germany
Sb64, June 2026

Ecuador's reporting process



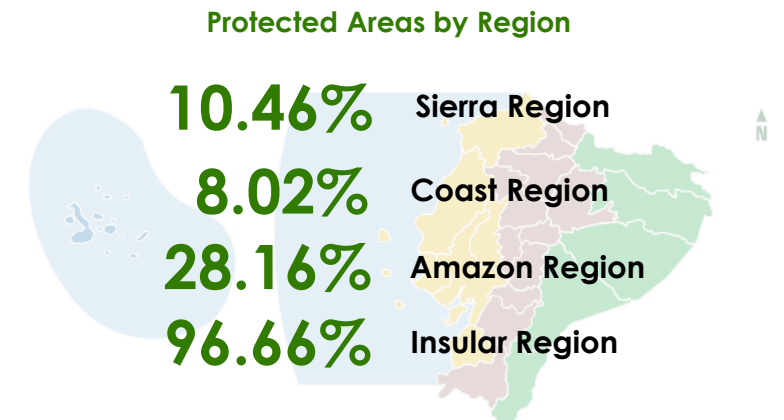
National Circumstances



National Climate Change Adaptation Plan



Implementation of SPRACC



POLITICAL LEVEL

Inter-institutional Climate Change Committee



TECHNICAL-POLITICAL LEVEL

Project Steering Committee
National Environmental Authority
National Planning Secretariat



TECHNICAL-OPERATIONAL LEVEL

National Environmental Authority
Climate Change Sub-Secretariat
5thNC-1stBTR Project Management Unit
GHG Inventory Focal Points



QUINTA COMUNICACIÓN NACIONAL Y PRIMER REPORTE BIENAL DE TRANSPARENCIA

PROJECT TIMELINE



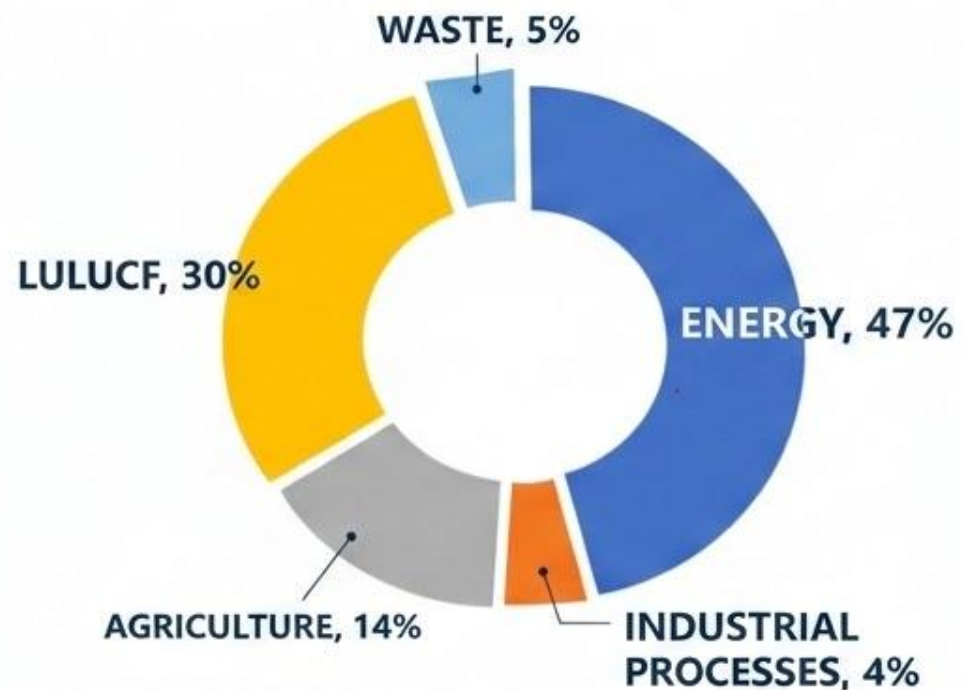
National Greenhouse Gas Inventory - 2022

TOTAL EMISSIONS

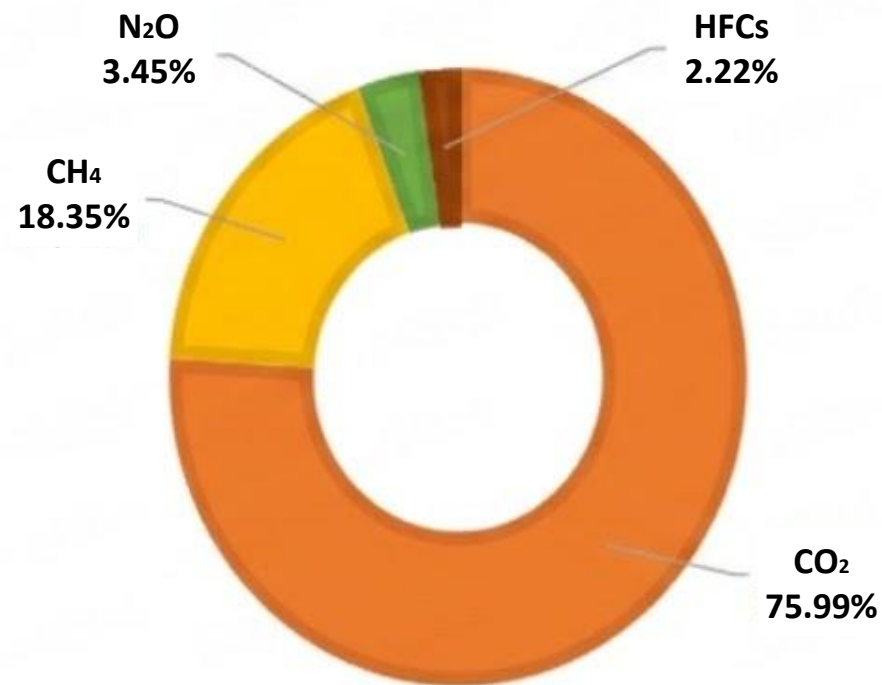
88,262.87

kt CO₂-eq

Distribution by Sector

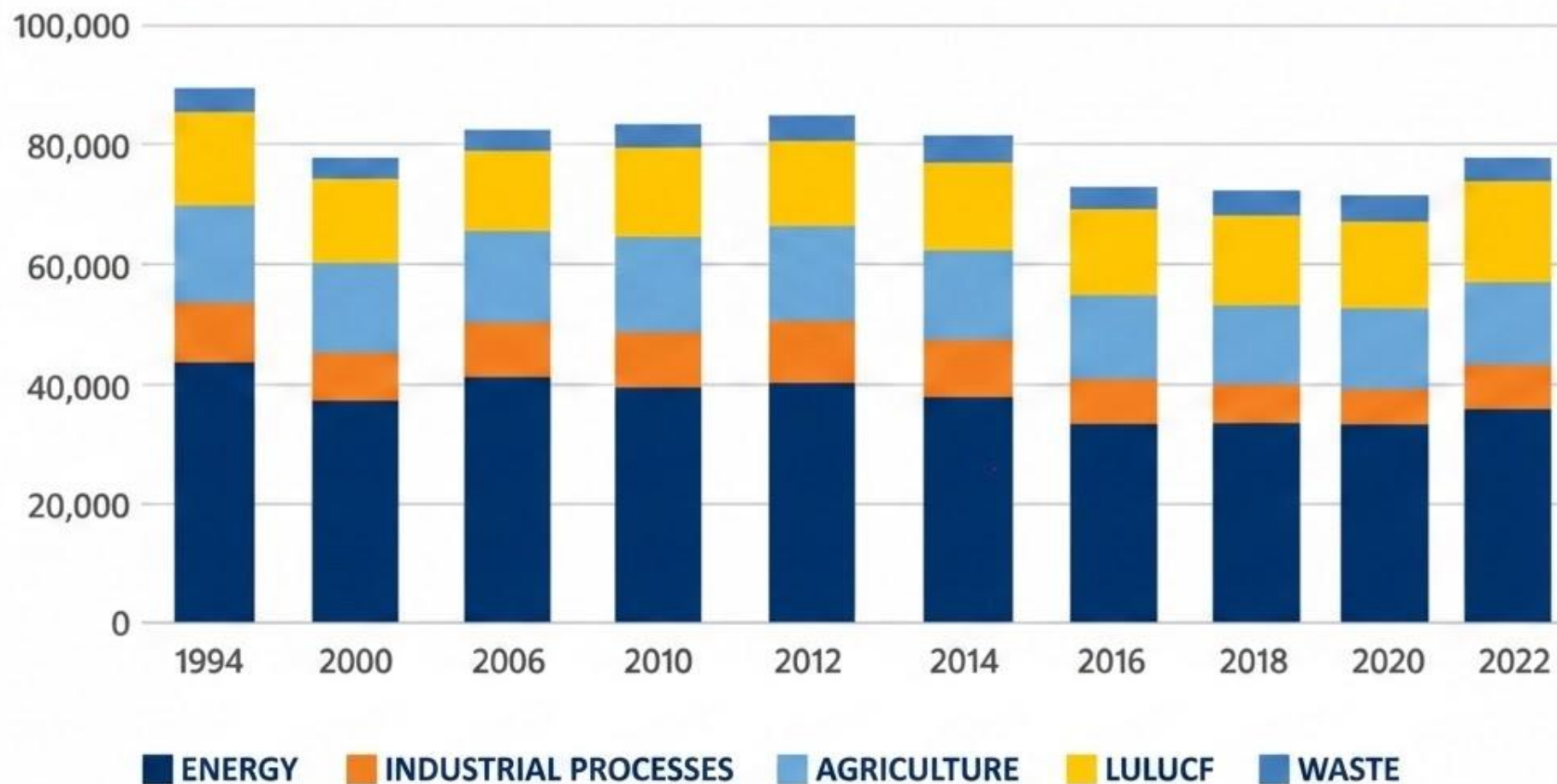


Distribution by Gas Type



Historical GHG trend (kt CO₂ eq) - with LULUCF

DISTRIBUTION BY SECTOR – EVOLUTION 1994–2022



Methodological aspects and improvements in the estimation of GHG emissions

Application of the 2006 IPCC Guidelines with the 2019 refinement

Update of GWPs according to IPCC AR5

Inclusion of new categories:

- Waste – 5C Incineration and open burning of waste (2020, 2021, 2022)
- IPPU – 2F Emissions from fluorinated substitutes for ozone-depleting substances

Disaggregation of national data

Agriculture sector (livestock) and waste (Category 5A estimation since 1960)

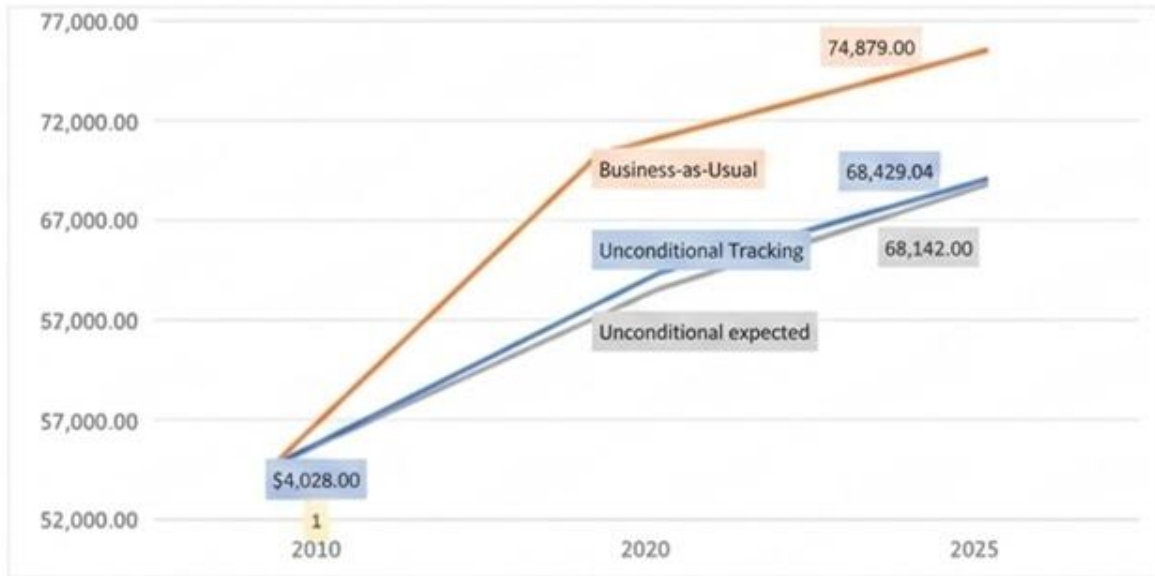
GHG emission estimation for the 2020-2022 triennium

Includes the respective historical recalculations necessary for temporal consistency

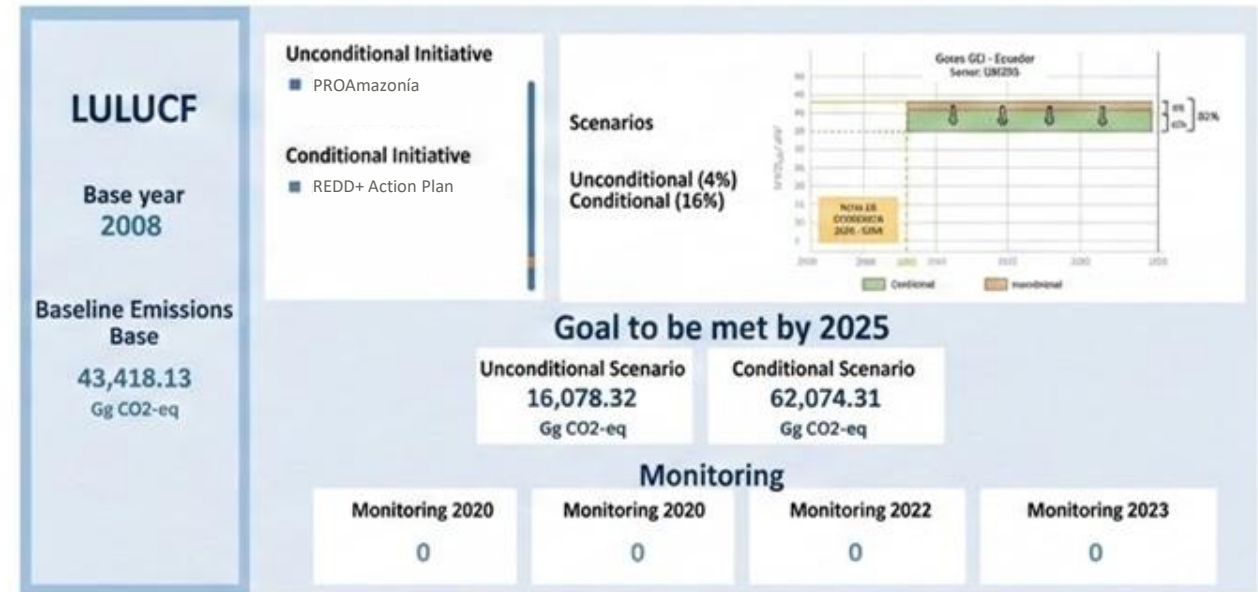
Results of the monitoring of the First NDC Mitigation component

First NDC: 2020, 2021, 2022 and 2023

Annual non-cumulative goal (Energy, Industrial Processes, Waste and Agriculture)



Summary initiatives and goals to 2025 LULUCF

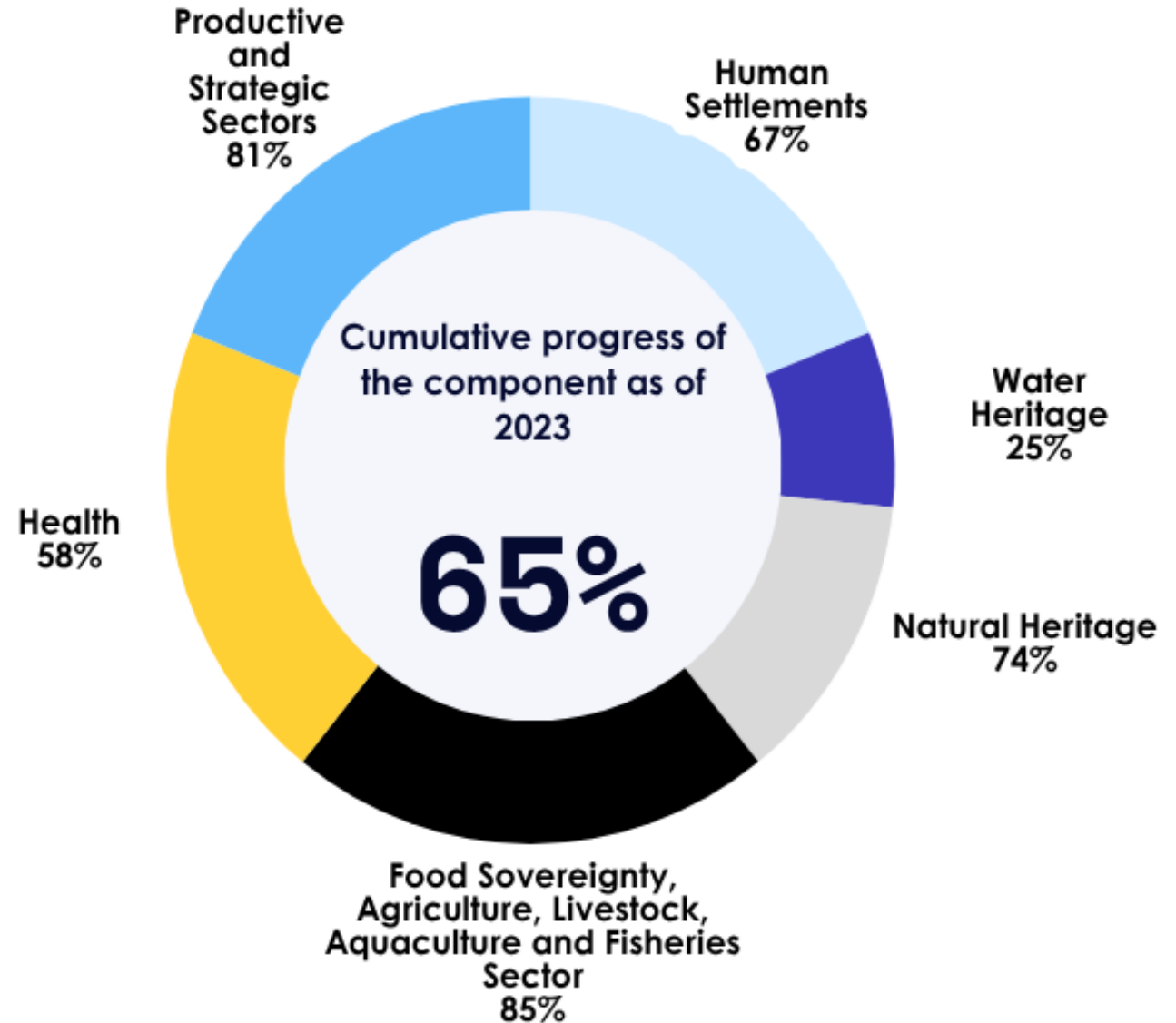
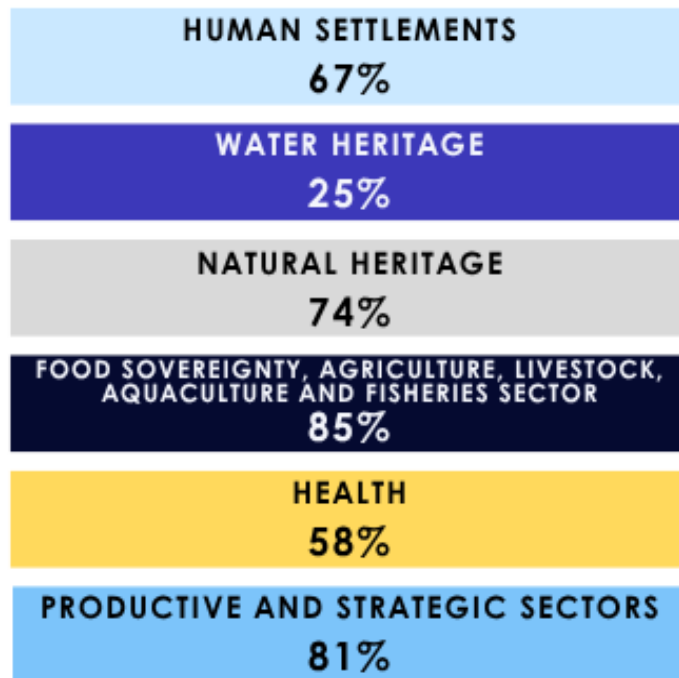


	2020	2021	2022	2023
Annual compliance goal	7.91%	7.69%	7.97%	8.61%
Compliance gap	-1.09%	-1.31%	-1.03%	-0.39%

Results of the monitoring of the First NDC Adaptation component

First NDC: 2020, 2021, 2022 and 2023

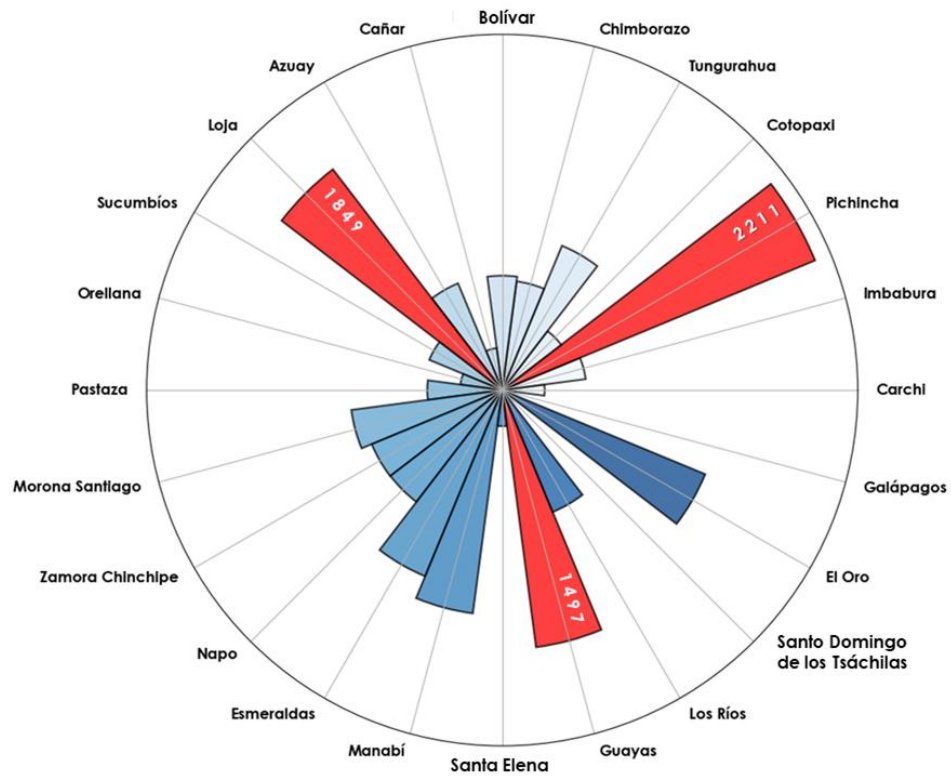
Cumulative Progress by Sector as of 2023



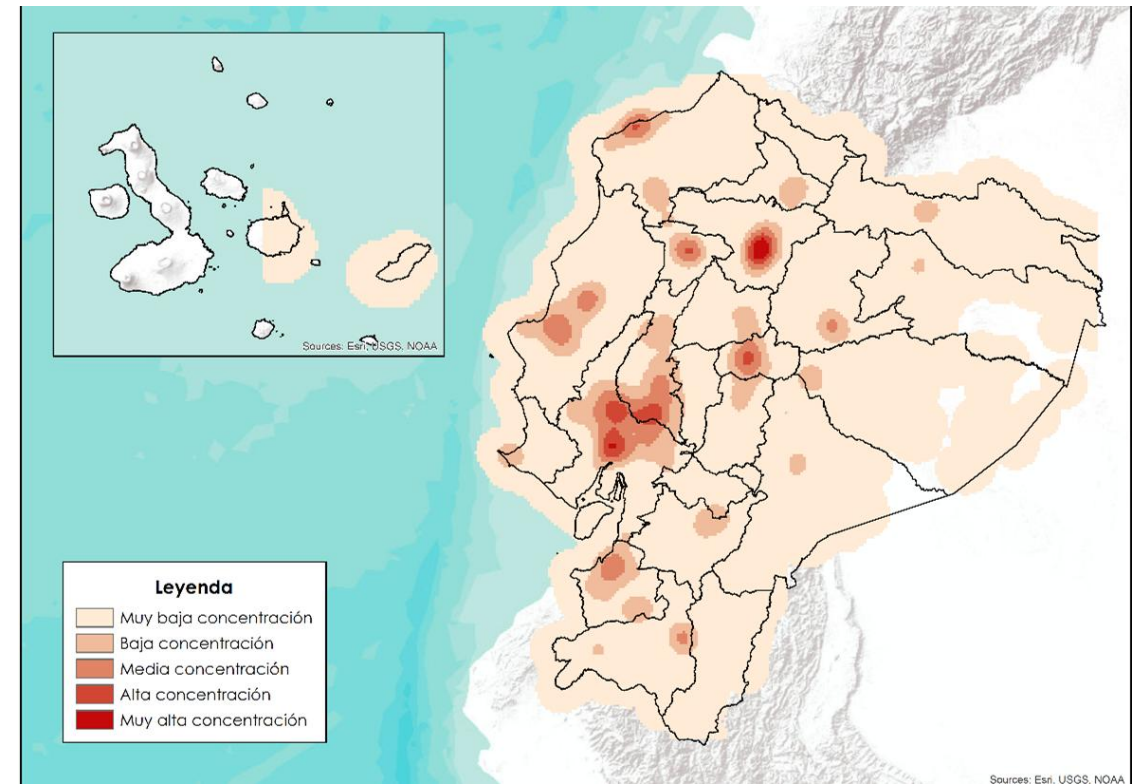
Impacts of Climate Change in Ecuador

Events registered between 2010 - 2023

Number of events registered by province



Registered event density heat map



Support Received

2021 - 2023

Total: USD 746 million

MITIGATION

53%

USD 401 million

ADAPTATION

35%

USD 259 million

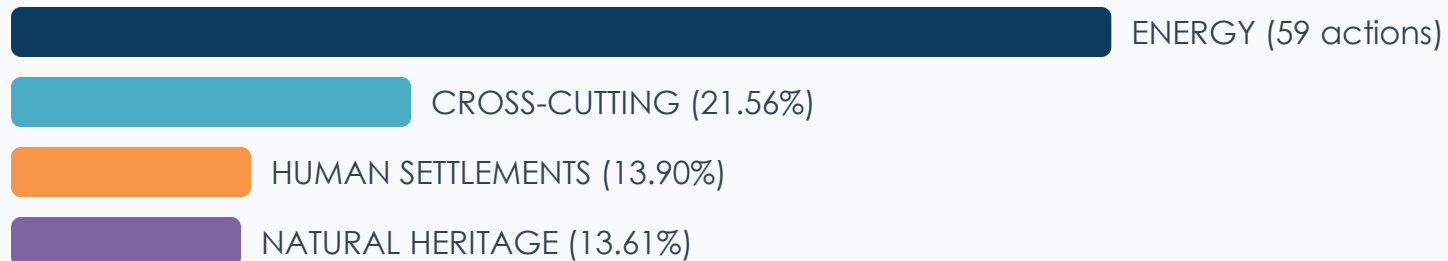
CROSS-CUTTING

12%

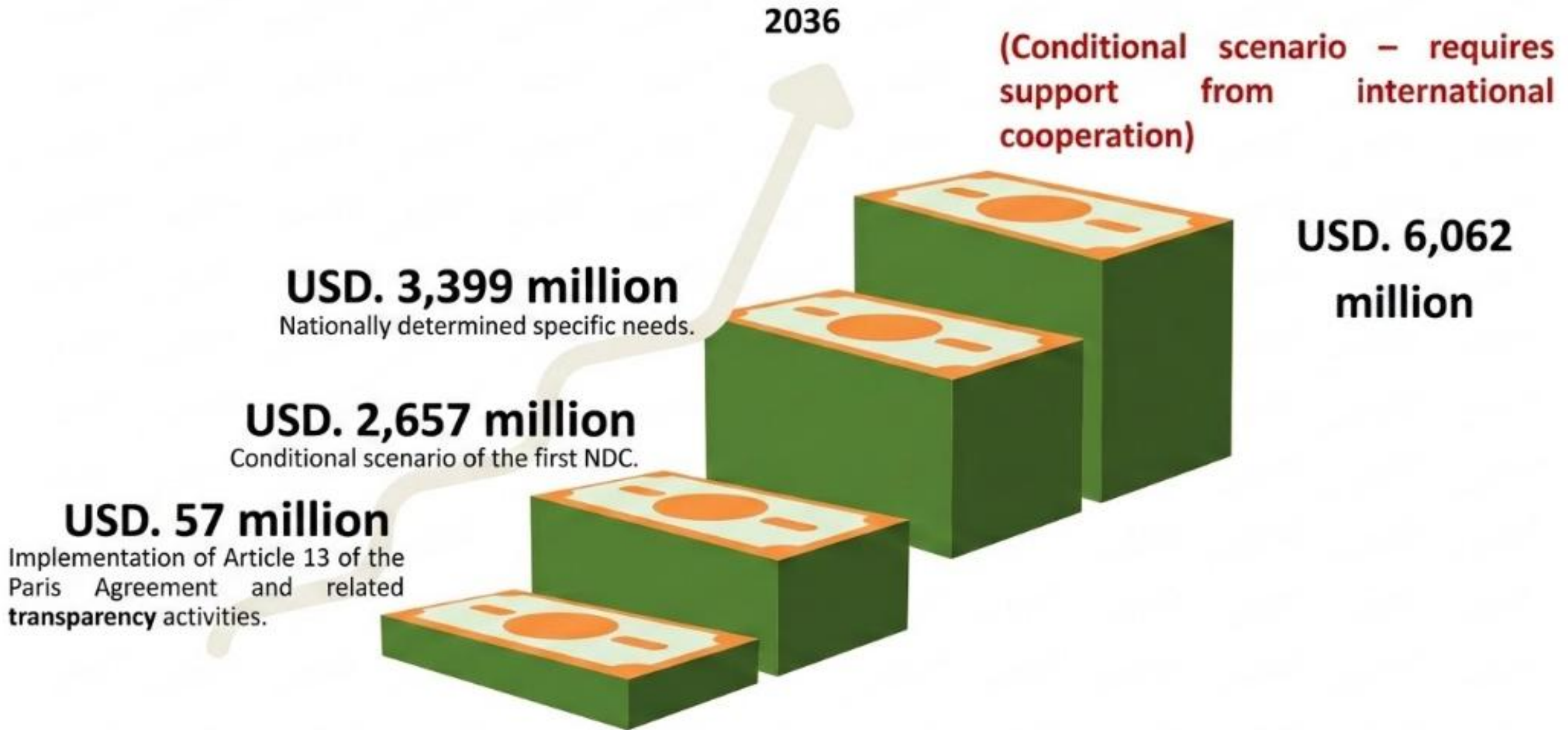
USD 86 million

Bilateral support: 18%
Grants: 30%

Distribution by number of actions



Support Needed



1BTR: Technical Expert Review

Ecuador submitted its first BTR in December 2024 and it is currently undergoing TER review.

Highlighted capacity-building needs:

QA/QC & Data Reporting

Technical training for national experts on QA/QC processes and procedures to prevent data misreporting.

Cooperative Approaches (ITMOs)

Capacity building to participate in cooperative approaches using internationally transferred mitigation outcomes, including methodology development for the next BTR.

Mitigation Actions (PaMs)

Technical assistance to identify, design, and develop a portfolio of mitigation actions, policies, and measures (PaMs), including GHG reduction potential, NDC contribution, and implementation cost assessment.

Long-term Modeling

Training on long-term modeling tools to extend GHG emission trend analysis and PaMs impact assessment beyond the current NDC timeframe.

Cost-Estimation & Co-benefits

Technical support to develop cost-estimation methodologies for PaMs, identify non-GHG co-benefits, and analyze interactions between measures.

Vulnerability & Projections

Technical support to improve climate vulnerability analysis, modeling, and hazard projections for BTR reporting.

**FACILITATIVE MULTILATERAL CONSIDERATION OF
PROGRESS**

**5TH NATIONAL COMMUNICATION & 1st BIENNIAL
TRANSPARENCY REPORT ECUADOR**

**Bonn, Germany
Sb64, June 2026**