

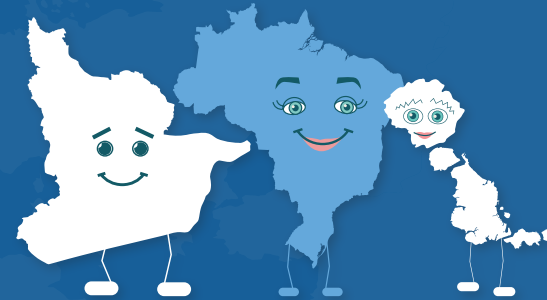


FLEXIBILITY PROVISIONS TO PROMOTE UNIVERSAL PARTICIPATION

- The ETF will be implemented based on the MPGs that apply to all Parties.
- The MPGs recognize the special circumstances of LDCs and SIDS. It also recognizes the capacity constraints of developing country Parties and provide flexibility to those that need it in light of their capacities.



The flexibility provisions address the scope, frequency and level of detail of reporting, and the scope of review.



The application of flexibility provisions is decided by each developing country Party.

When applying specific flexibility provisions, developing country Parties shall:



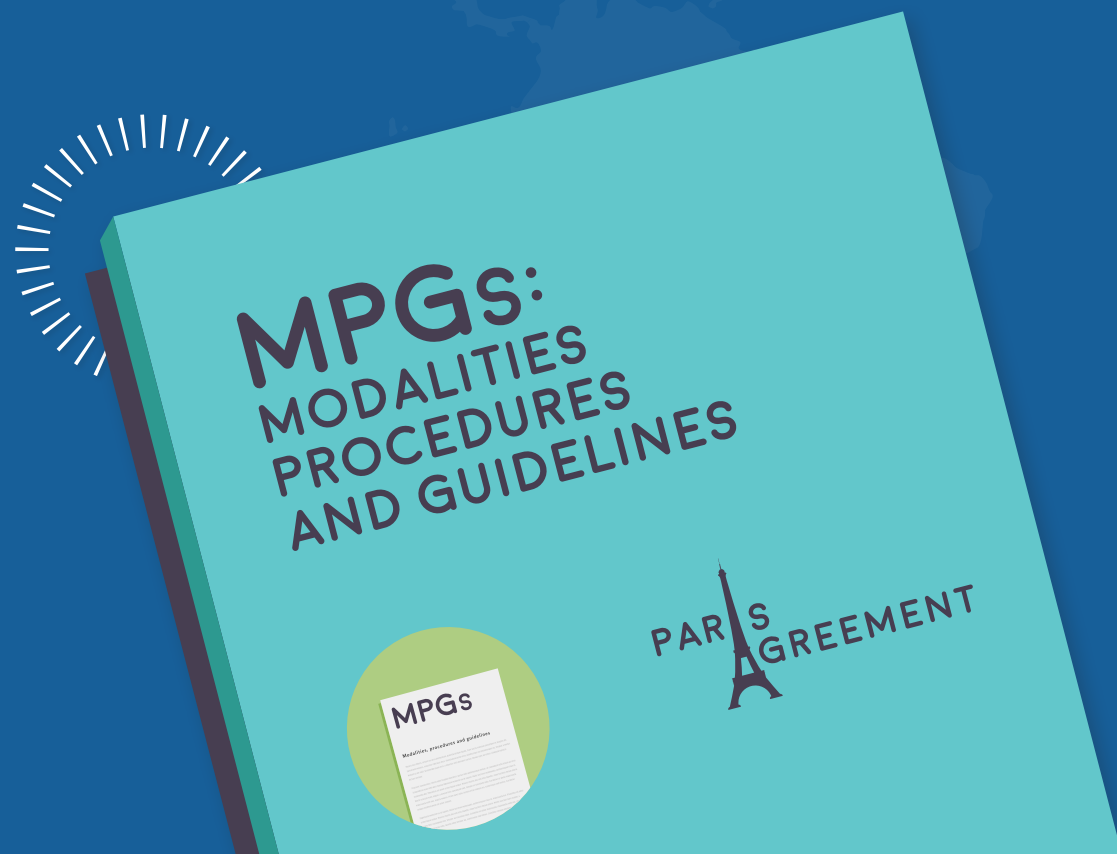
CLEARLY STATE THE REPORTING REQUIREMENT TO WHICH THEY ARE CHOOSING TO APPLY FLEXIBILITY,



CLEARLY OUTLINE THEIR CAPACITY CONSTRAINTS, NOTING THAT SOME CONSTRAINTS MAY BE RELEVANT TO SEVERAL FLEXIBILITY PROVISIONS,



SELF-DETERMINE AND PROVIDE ESTIMATED TIME FRAMES FOR IMPROVEMENTS THAT RELATE TO THEIR CAPACITY CONSTRAINTS.



CONTINUOUS IMPROVEMENT

MPGs encourages/catalyzes universal participation by offering built-in flexibility, supporting ways to continuously improve and encouraging strong institutional arrangements.