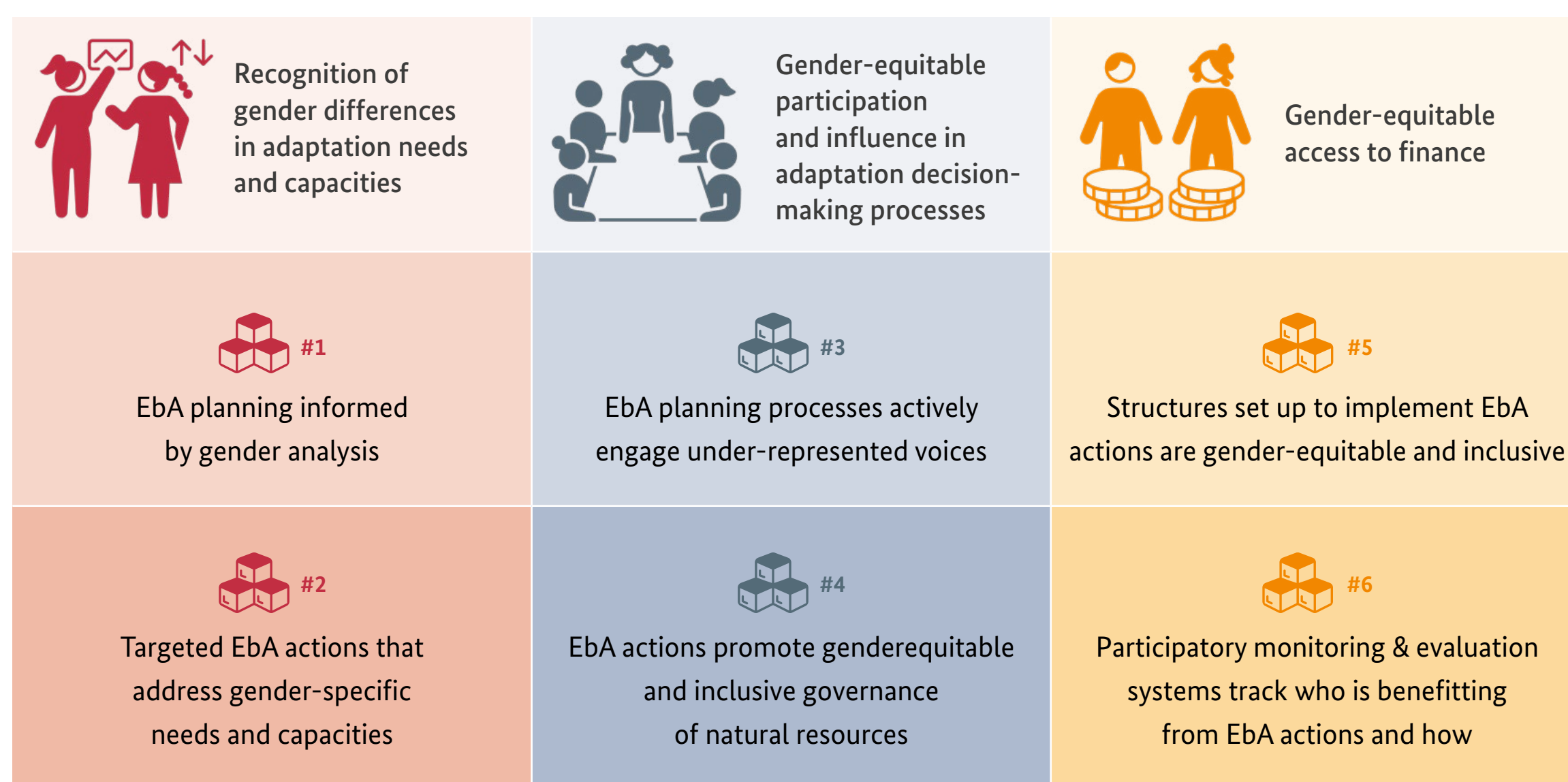




TOWARD GENDER-RESPONSIVE ECOSYSTEM-BASED ADAPTATION

Why it's needed and how to get there



These **building blocks for gender-responsive EbA** represent key steps that can be taken at different stages of project implementation. They align with the elements of gender-responsive adaptation, providing specific considerations for planning and implementing EbA actions. Given that gender responsiveness is highly dependent on the context and the process undertaken, these building blocks represent approaches that are broadly applicable and can help ensure that EbA initiatives promote gender equality and don't exacerbate existing inequalities.



RECOMMENDATIONS FOR GENDER-RESPONSIVE EBA

- Build capacity for gender analysis within the EbA community
- Engage gender experts in EbA planning, implementation, and monitoring and evaluation
- Create opportunities for women to take on leadership roles
- Allocate resources for participatory processes
- Invest in building the evidence base on EbA and gender equality
- Engage with local governance systems to advocate for equitable representation



READ PUBLICATION

bit.ly/3G7xeXA



Published by



In collaboration with:



On behalf of:



of the Federal Republic of Germany