



Strengthening the Global Response in the  
Context of Sustainable Development and  
Efforts to Eradicate Poverty



## Close link to Sustainable Development (SD) and SDGs

- SD balances social well-being, economic prosperity, environmental protection
- SD supports and enables the systemic transitions and transformations required
- UN Sustainable Development Goals framework
  - poverty eradication
  - reducing inequalities
  - climate action

Ashley Cooper/ Aurora Photos

## Close link to SD and SDGs

- Different pathways have different benefits and trade-offs with SD
- More avoided impacts on SD, eradicating poverty and inequality at 1.5°C than at 2°C
- Adaptation/mitigation synergies maximised and trade-offs minimized



Ashley Cooper/ Aurora Photos

# Adaptation: synergies and trade-offs

- Synergies from adapting to 1.5°C
  - Reducing vulnerability of human and natural systems -> food, water, disaster risks, health, poverty, inequality, ecosystem services
- Trade-offs, if interventions poorly designed and implemented
  - Intensifying agriculture, expanding urban infrastructure - > greenhouse gas emissions, water use, social and gender inequality, undermine health and natural ecosystems



Ashley Cooper/ Aurora Photos

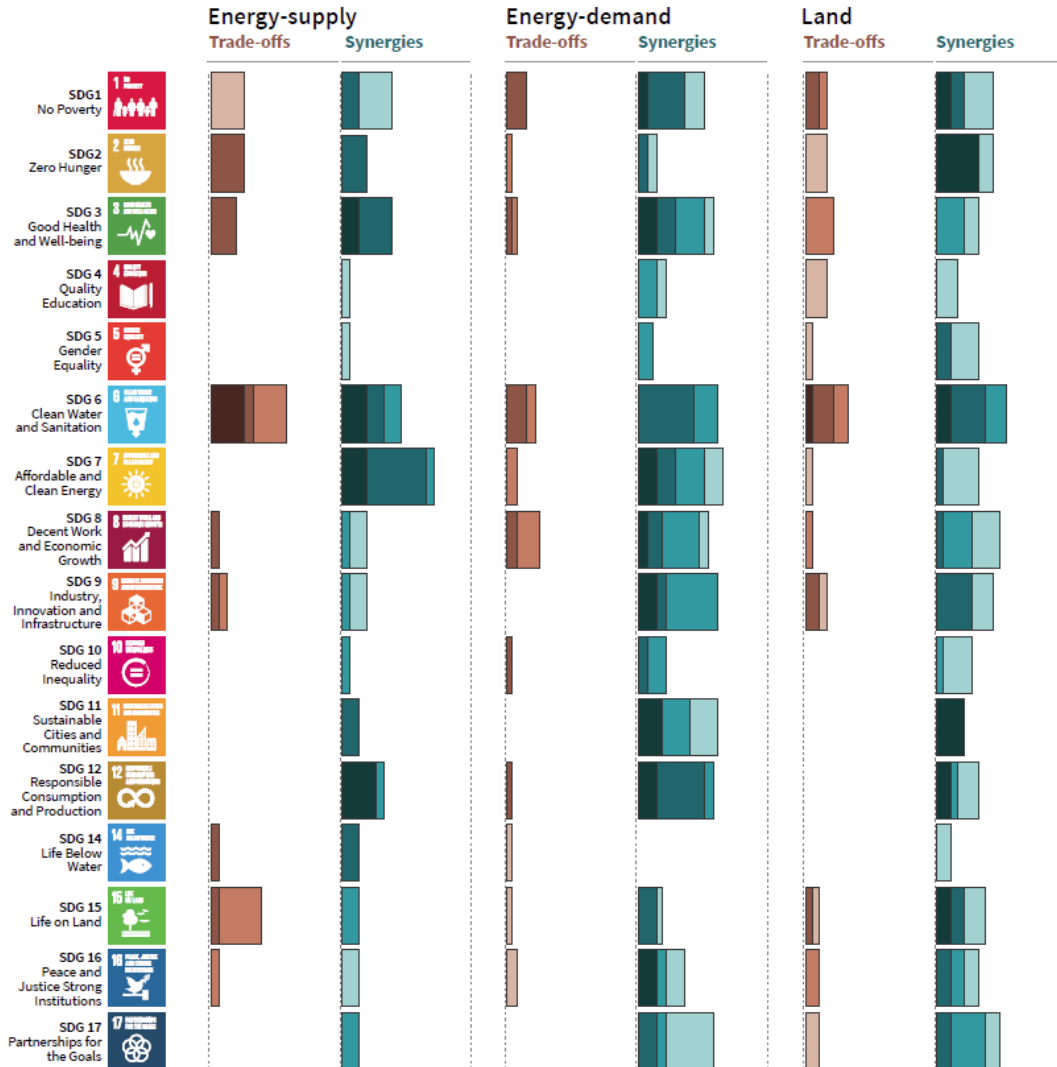
## Adaptation: synergies and trade-offs

- Adaptation options that also mitigate emissions -> synergies and cost savings
- Increasing **investment in physical and social infrastructure** key enabling condition -> societal resilience, adaptive capacity



Ashley Cooper/ Aurora Photos

# Mitigation synergies and trade-offs with the SDGs



Length shows strength of connection



Shades show level of confidence



## Mitigation: synergies and trade-offs

- More synergies than trade-offs
- Net-effect depends on pace, magnitude, portfolio, management of mitigation
- Most synergies, least trade-offs in pathways with **low energy demand, low material consumption, low-emissions diet**



Ashley Cooper/ Aurora Photos

## Mitigation: synergies and trade-offs

- Economies that are highly dependent on fossil fuels
  - Mitigation creates risks for sustainable development
  - Diversified economy and energy sector
- Redistribution policies to protect the poor and vulnerable can resolve trade-offs for a range of SDGs
- Investment needs for such complementary policies are only a small fraction of the overall mitigation investments



Ashley Cooper/ Aurora Photos





## Enabling conditions

Enhance the feasibility of options consistent with limiting global warming to 1.5C:

- Strengthened multi-level governance and institutions
- Strengthened policy tools
- Technological innovation
- Changes in lifestyle and behaviour
- Transfer and mobilisation of finance

Ashley Cooper/ Aurora Photos



## Evolution of financial systems

- Realignment of savings and expenditure to **low emission** and **climate resilient** infrastructure and services
  - Change incentives
  - Mainstream climate finance within financial and banking systems
  - Low-risk, low interest financing
  - New public-private partnerships to de-risk climate friendly investments and support small scale enterprise/households



Ashley Cooper/ Aurora Photos



## Multi-level action

- Ambitious action supported by national and sub-national authorities, civil society, private sector, indigenous peoples and local communities
- Mix of **adaptation and mitigation** action implemented in participatory and integrated way
  - Local and regional governments supported by national governments
  - **Aligned with economic and SD**
- International cooperation is a critical part of limiting warming to 1.5°C

Ashley Cooper/ Aurora Photos

# Climate Resilient Development Pathways

- Strengthen SD and efforts to eradicate poverty; ambitious mitigation and adaptation
- Equity and social justice are core elements of the societal and systems transitions and transformations required



Ashley Cooper/ Aurora Photos

# There is no safe level of climate change

- Each bit of warming matters
- Each year we delay matters
- Each choice at every level matters



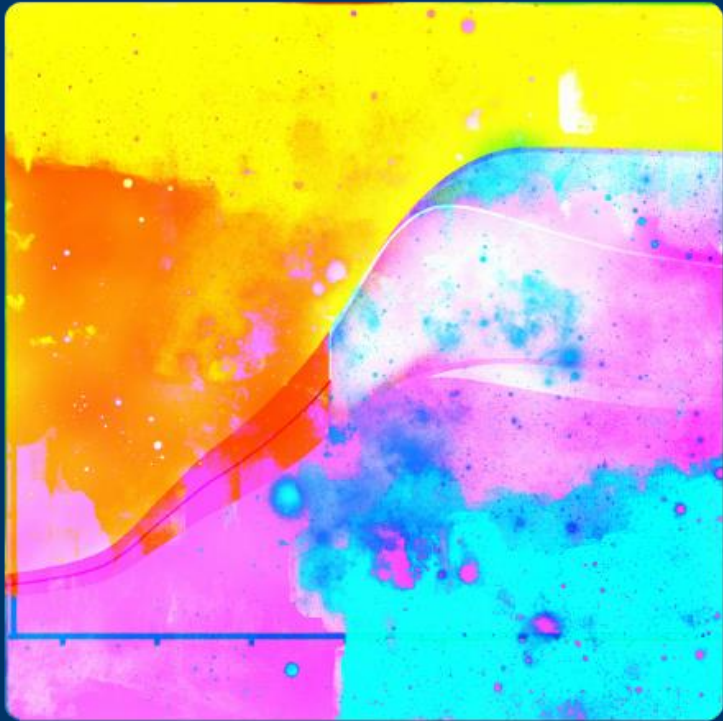
Ashley Cooper/ Aurora Photos



## We are the answer

*“Humans are at the centre of global climate change: their actions cause anthropogenic climate change, and social change is key to effectively respond to climate change.”*

**The scientific message is clear. The response is now in the hands of society, governments and policymakers**



Thank you