



**El ambiente
es de todos**

Minambiente





El ambiente
es de todos

Minambiente

Experiences and perspectives on the compilation of greenhouse gas inventories and on the use of reporting tables and reporting tools by developing and developed country Parties

COLOMBIA

Carlos Felipe Torres Triana – IDEAM
cftorres@ideam.gov.co

November 20, 2020





CONTENT

1. Colombia in some numbers
2. UNFCCC reports submitted
3. Human resources for GHG inventories
4. Emission profile of the latest GHG inventory
5. Identified needs
6. Challenges in preparing and reporting GHG inventories
7. Final Considerations



1. COLOMBIA IN SOME NUMBERS

Biodiversity 2017
 9,410 plant species
 78,605 species of animals
IDEAM (2018)

TOTAL EXTENSION
2,070,408 KM²
IGAC (2008)

Census population 2018
45,5 million population
 men 23,531,670
 women: 24,130,117
DANE (2010)



Natural forest 2017
59,311,350 ha
IDEAM (2018)

Strategic ecosystems
Glaciers
37,17 km² at 2016 year

Paramo: 2,906,137 ha per year 2012
Dry forests: 720,000 ha per year 2014
wetlands: 30,781,149 ha per year 2015

IDEAM (2017)
 Sarmiento, C, et ál. (2013)
 Pizano, C, et ál. (2014)
 Jaramillo, U, et ál. (2017)

1,071 PROTECTED AREAS

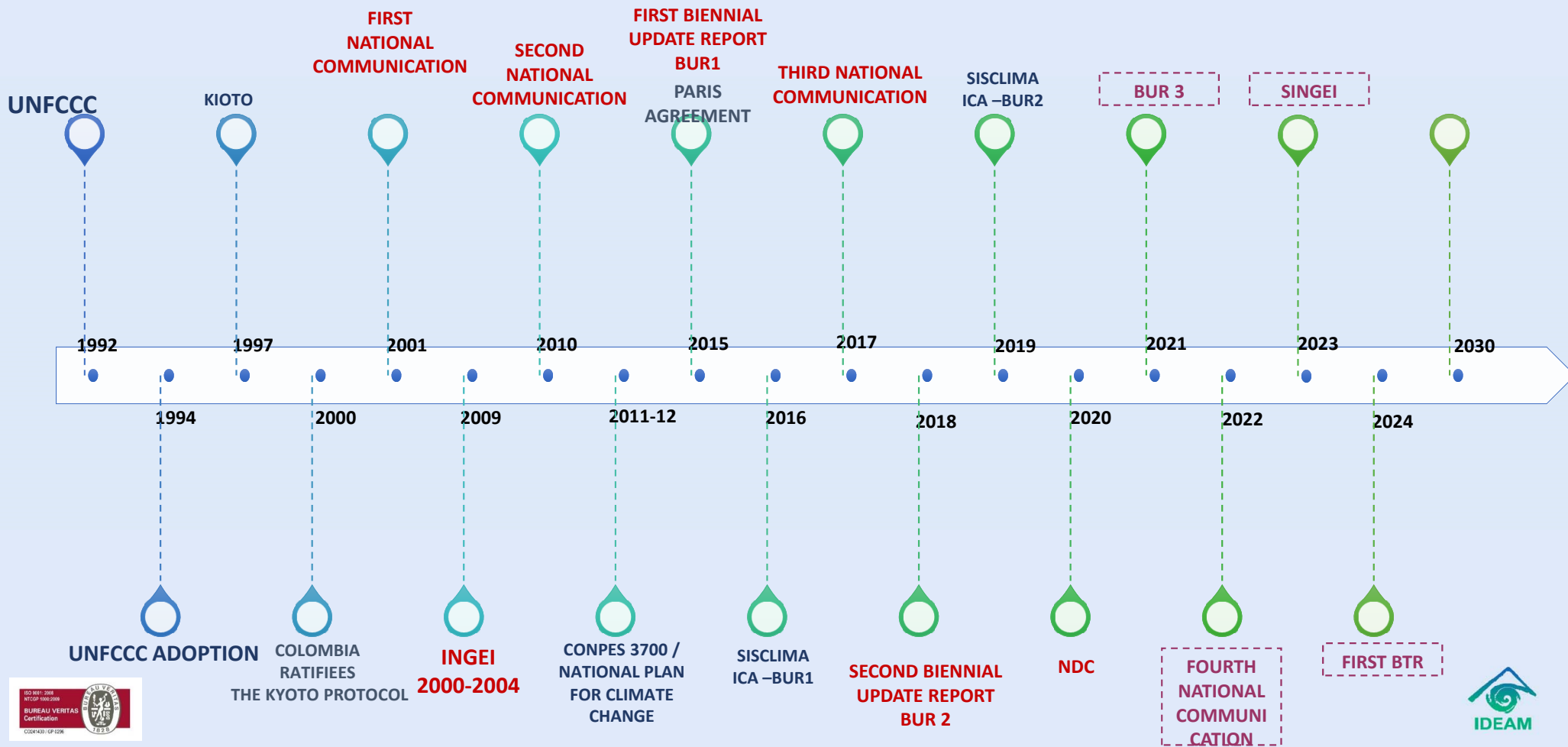
(61,597,030 ha)
PNNC (2018)

27.78%
UBN 2005
 DANE (2011)



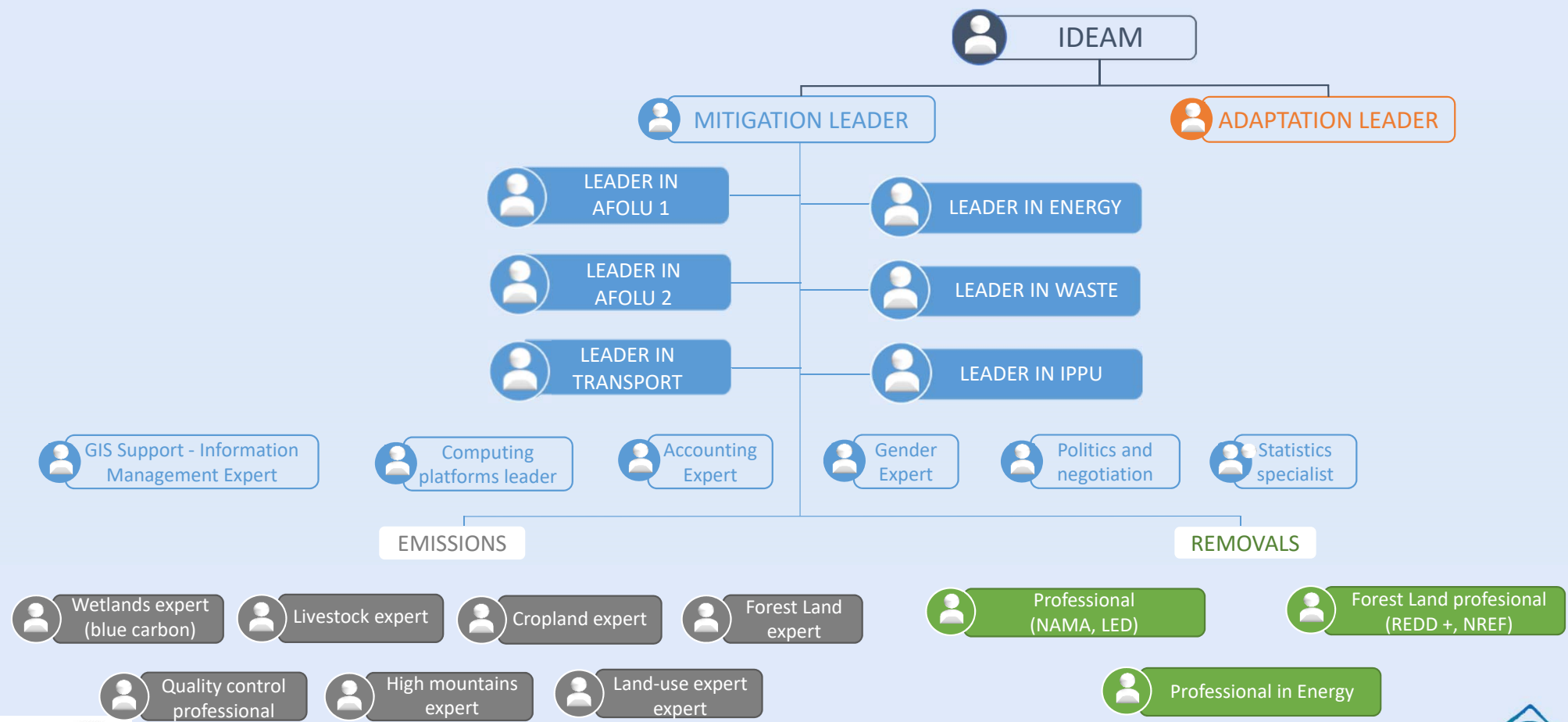


2.UNFCCC REPORTS SUBMITTED BY COLOMBIA





3. HUMAN RESOURCES FOR GHG INVENTORIES

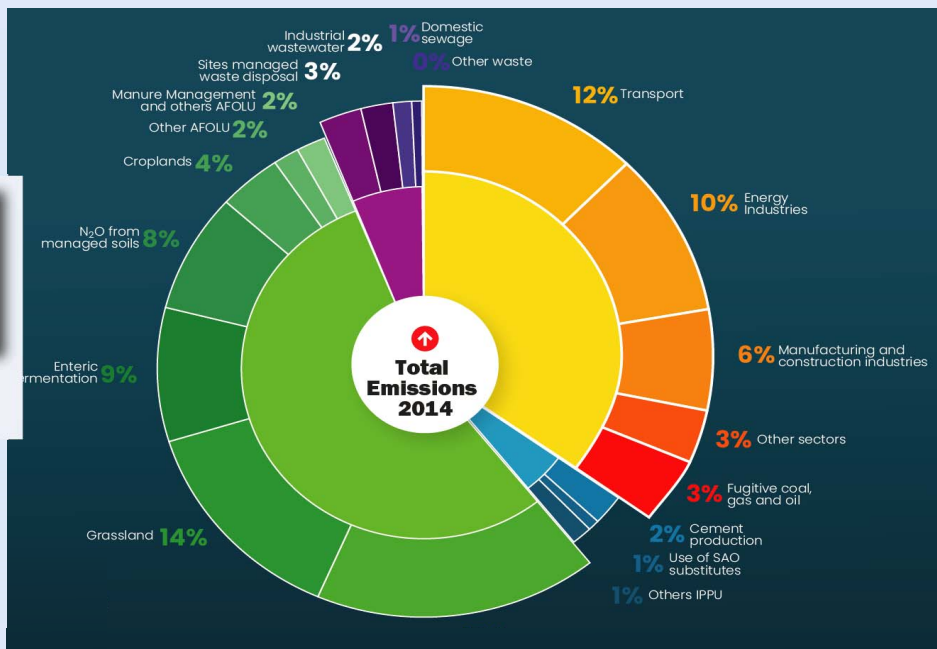




4. EMISSION PROFILE OF THE LATEST GHG INVENTORY

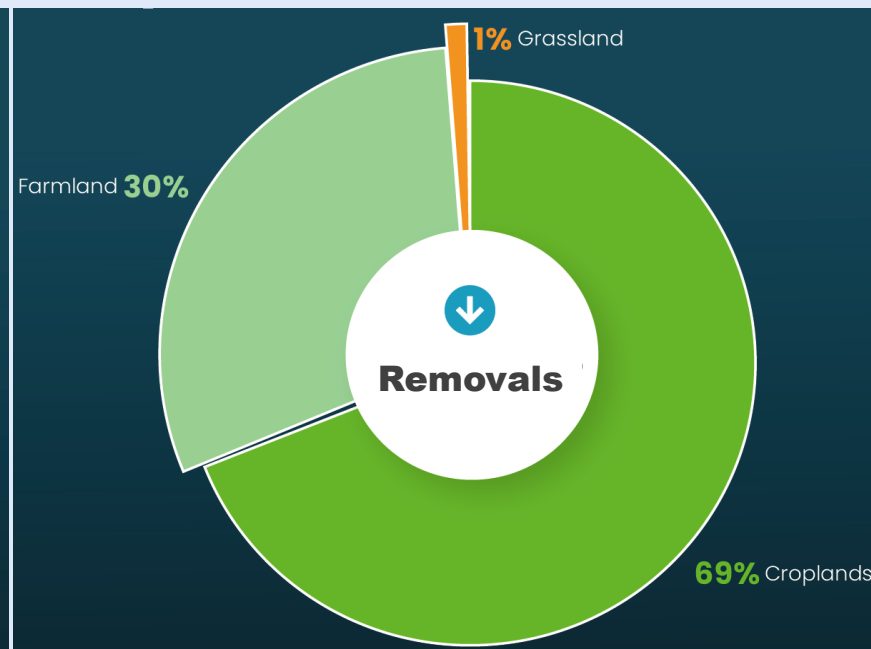


IPCC Guidelines 2006



GHG Emissions 2014 (Gg CO2 eq)

236,973



GHG Removals 2014 (Gg CO2 eq)

- 22,658





5. IDENTIFIED NEEDS

Implement the National Information System of Climate Change that allows monitoring of the NDC baselines (RENARE, M&E, SMBByC, SINGEI, SNIF, IFN and others)

Strengthen the technical and financial capacity for the implementation of the monitoring, reporting and verification system (MRV)

Strengthen deforestation monitoring mechanisms and systems

Move forward to the formulation and implementation of the territorial and sectorial integrated management plans

Advance in inter-institutional articulation, which allows linking tools, guides and gender policies (mitigation and adaptation)



6. CHALLENGES IN PREPARING AND REPORTING GHG INVENTORIES

Institutional and procedural arrangements that allow inventory estimation, compilation and timely reporting

Two-year gap in inventory reporting

Projections of greenhouse gas emissions and removals

Define indicators to monitoring progress in the application and compliance of the NDC.

Process systematization to generate all the CRF tables, with according to the required specifications

Reporting AFOLU:
Differences between IPCC 2006 and CRF report



7. FINAL CONSIDERATIONS

1. The methodology of the national inventory is the guidelines of the IPCC 2006, currently updates are being incorporated with the refinement of the IPCC 2019
2. The reporting tables currently used are those proposed by the IPCC, with some adaptations to national circumstances.
3. Colombia is not using the IPCC software for inventory calculations, it is using its own spreadsheets (excel). AFOLU Programming
4. Technical meetings have been developed to compare the use of the CRF reporting tables and currently used.



El ambiente
es de todos

Minambiente

THANKS!!

