

Climate Change and Meteorological Parameters

(a) Temperature

- Both maximum and minimum temperatures are showing a warming trend. The past decade has been the warmest

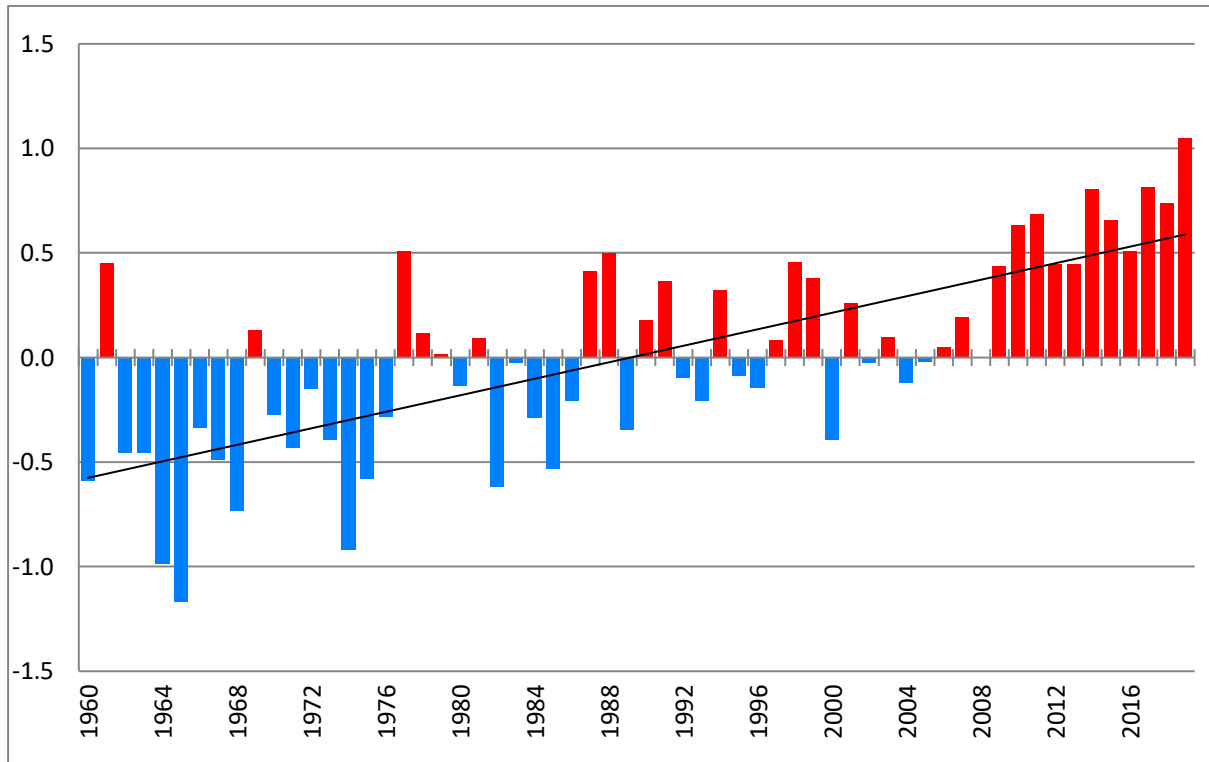


Fig 1: Mean maximum temperature anomaly trend in °C during the period 1951-2019 (base period 1961-1990).

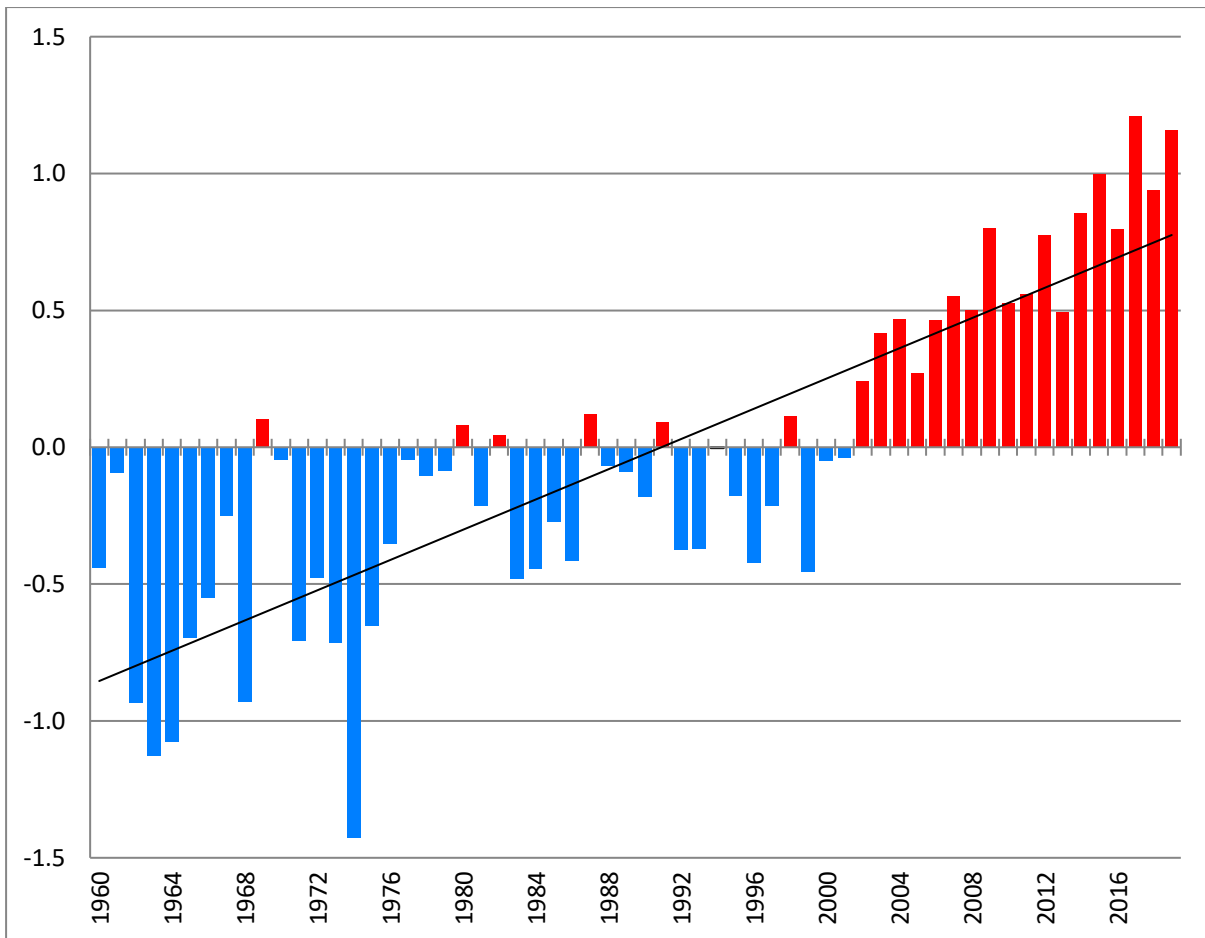


Fig 2: Mean minimum temperature anomaly trend °C during the period 1951-2019 (base period 1961-1990).

(b) Rainfall

- Rainfall amount has decreased by at least 200 mm between the periods 1961-1990 and 1981-2010, though this decrease have not been observed at all the localities over the island. A decrease from 3800 mm per year to 3600 mm per year has been observed over the CP.
- A shift in region of maximum precipitation from the southern part of the Central Plateau towards the eastern part has been observed.
- During of dry spell in between consecutive rain spell has increased
- The frequency of short duration heavy rain events has increased.

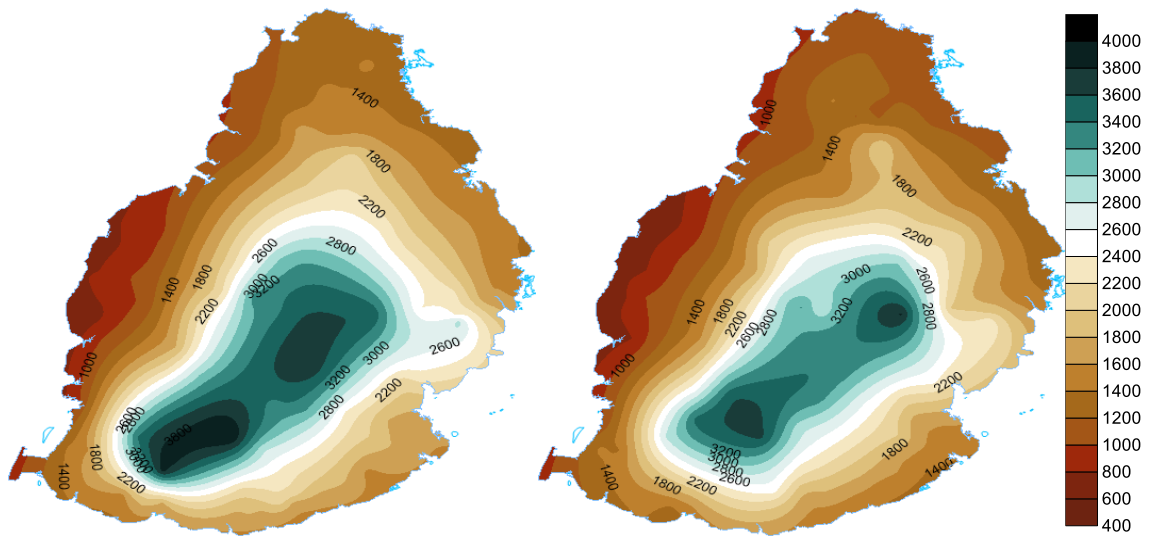


Fig. 3: Long term mean (LTM) rainfall in mm over Mauritius (a) 1961-1990 (b) 1991-2019.

(c) Sea level

The observed sea level in Mauritius based on the analysis of tide data from Port Louis tide gauge show a mean rise of 5.2 mm/yr for the period 1987 to 2019.

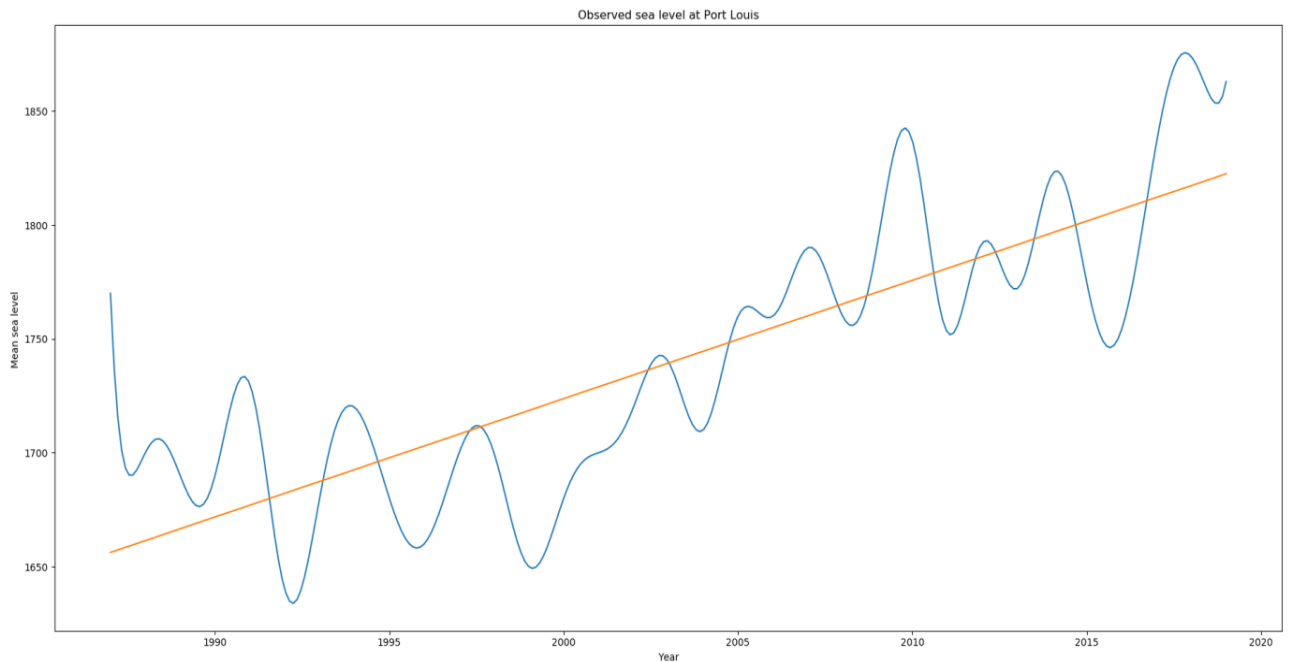


Fig 4: Mean Sea level in mm recorded by Port Louis tide gauge for the period 1987 to 2019