



# CLIMATE RATIONALE

By  
**Paulino Omoj Omay(Ph.D)**

**ACTING HEAD OF CLIMATE CHANGE UNIT**  
**IGAD Climate Prediction and Applications Centre (ICPAC)**

**Capacity building for accessing finance, 1-2 September 2025**



## INTRODUCTION

- **Climate rationale** is the *heart* of a good proposal to the Adaptation Fund, GCF, or GEF
- A good proposal prove to reviewers that the project *directly* addresses **climate change impacts**, not just development gaps.
- Many proposals are rejected because their rationale is weak or looks like “*business-as-usual development*.”

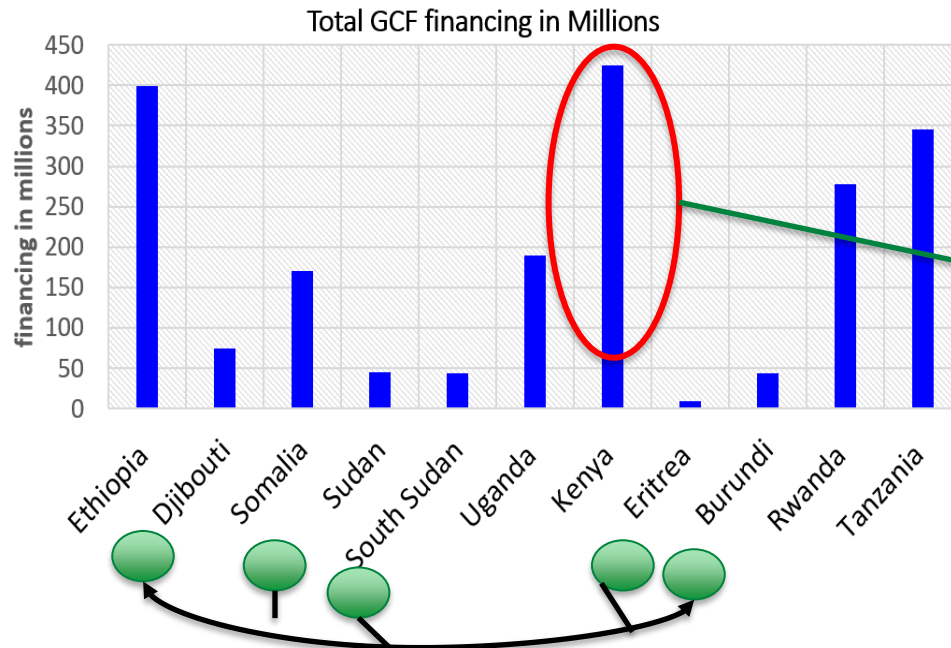
# AFRICA'S CLIMATE FINANCE LANDSCAPE

Metric	Estimate / Trend
Total Climate Finance (2021–22)	~\$44 billion (up 48% from ~30 billion)
Proportion of Needs Met	23–25% of NDC requirements; ~18% mitigation; ~20% adaptation
Dominant Funding Sources	Public & International (~82–87%); Private sector (~10–18%)
Debt-based Finance	Over 50% of flows, increasing fiscal strain
Regional Disparity	10 countries receive ~50% of flows; vulnerable nations underfunded
Innovations	Wildlife bonds (GEF), DFI scale-ups, Adaptation platform (USD 5B target)
African Finance Share	Only ~3–4% globally; ambition to reach 10% by 2030

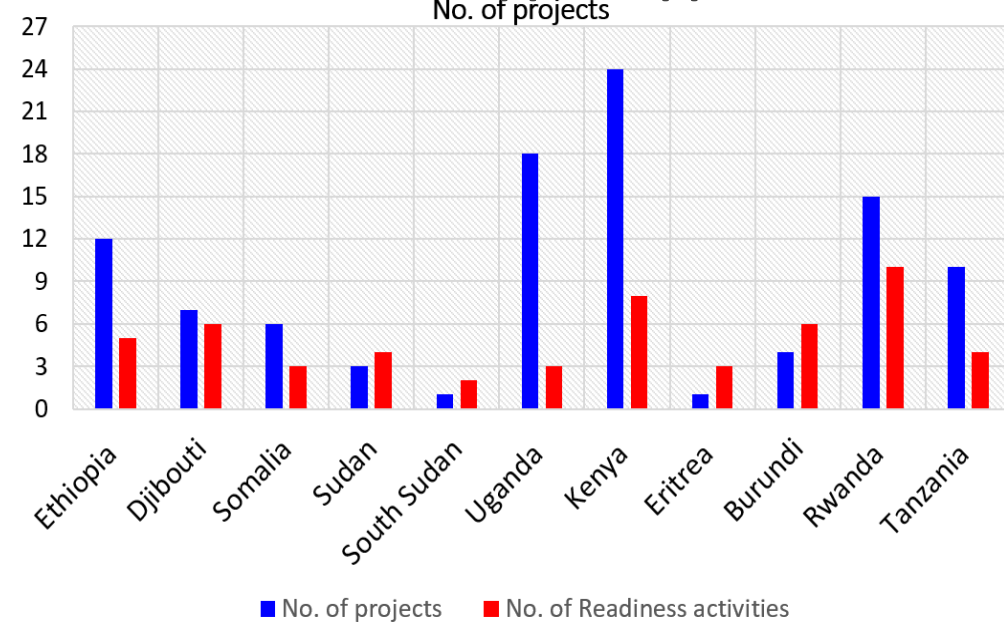
- Heavy reliance on international accredited entities (UNDP, WB, FAO)
- Few direct access entities in region

# EAST AFRICA CLIMATE FINANCE THROUGH THE GREEN CLIMATE FUND(GCF)

All countries in GHA have a National Designated Authority or Focal Point (NDA/FP).



## Readiness support approved



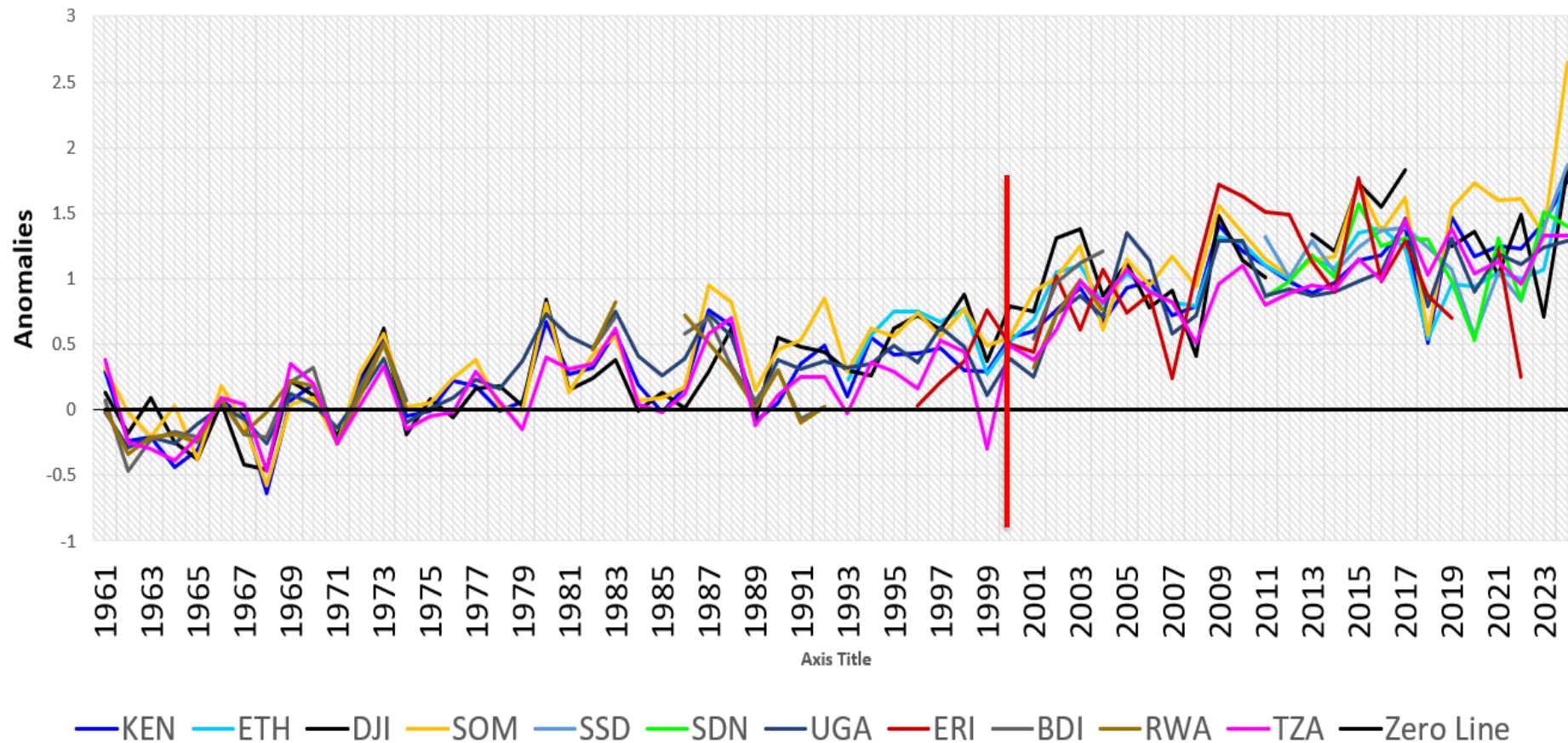
Total GCF financing for Kenya more than **400m**, while Sudan, Djibouti, South Sudan, Eritrea, Burundi less than **200m** combined

## **KEY ASPECTS OF A STRONG CLIMATE RATIONALE IN A FUNDING PROPOSAL**

- **Clear Link Between Climate Change and the Problem**
  - **Evidence of Climate Impacts on Vulnerable Sectors**
  - **Attribution to Climate Change (not just poverty or mismanagement)**
  - **Justification for Adaptation / Mitigation Measures**
  - **Use of Climate Data and Projections**
  - **Differentiation from Business-as-Usual Development**
  - **Integration of Cross-Cutting Risks**
  - **Regional and Global Alignment**
-

# TEMPERATURE TRENDS

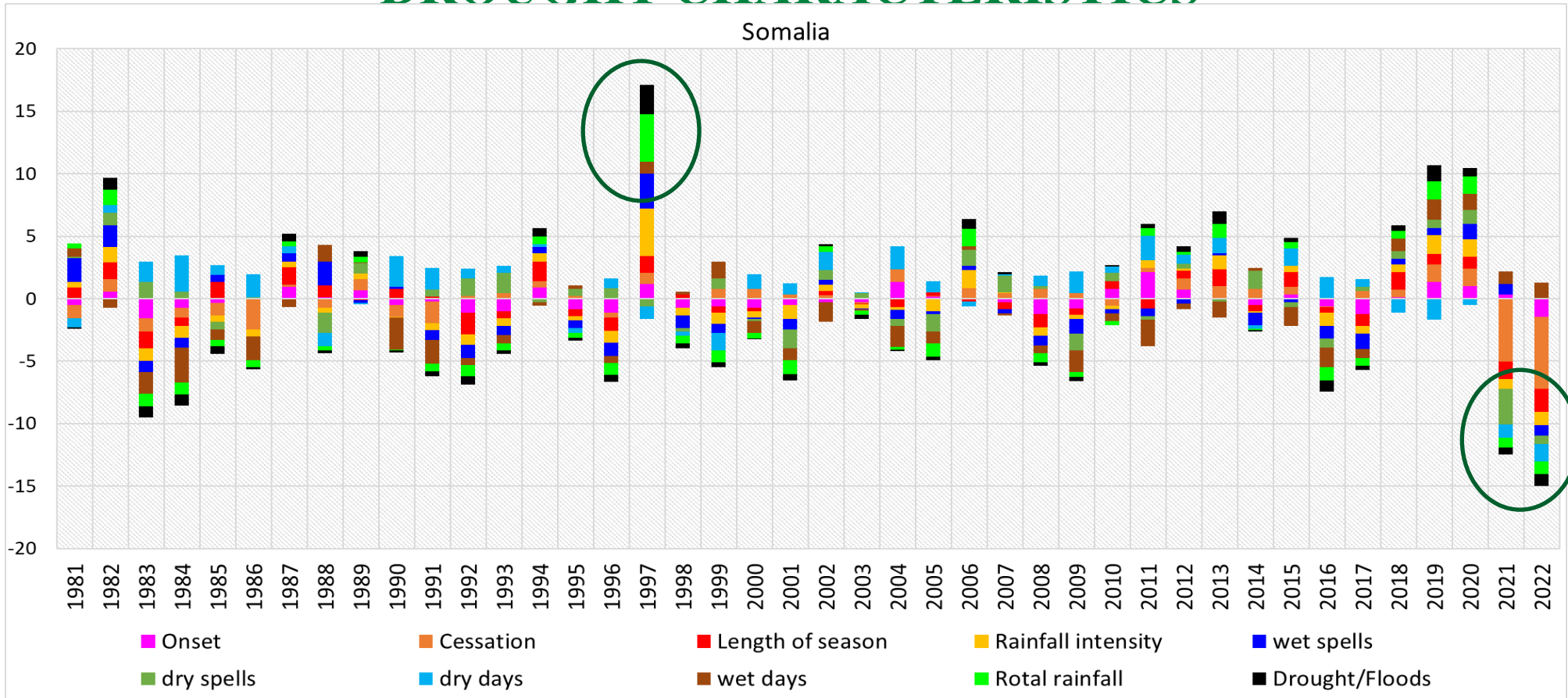
Temperature anomalies in East Africa



➤ **Since 1999 Extraordinary warming observed in all countries in GHA**



# SEASONAL AND INTRA-SEASONAL RAINFALL AND DROUGHT CHARACTERISTICS



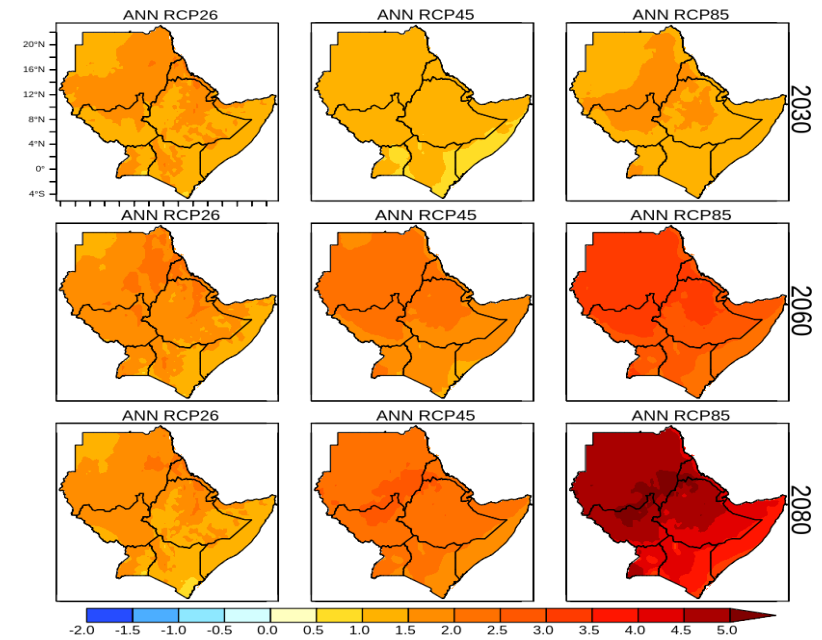
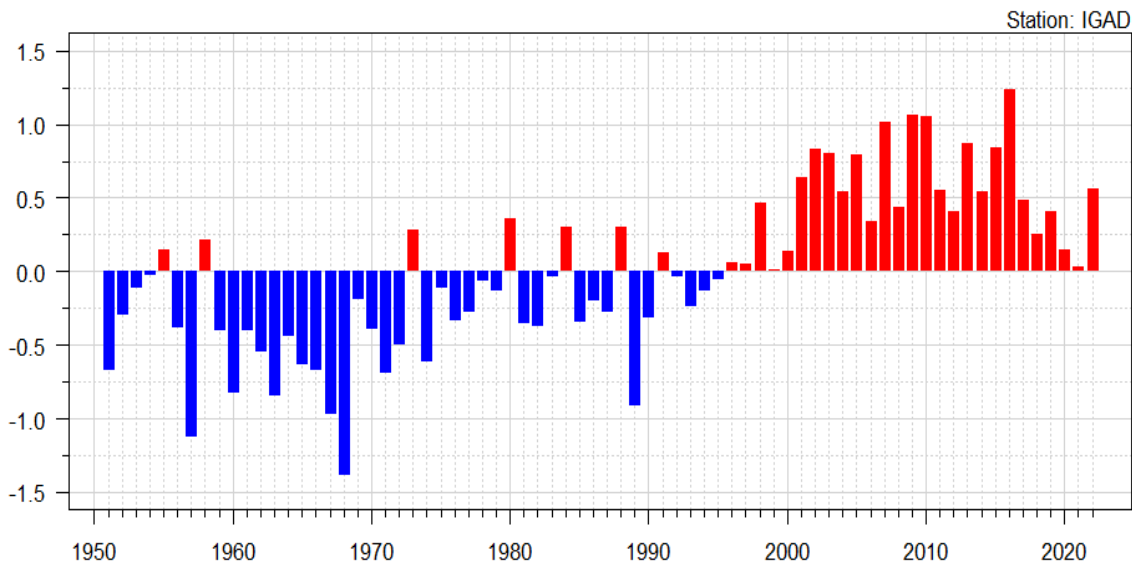
➤ **Late onset, early cessation, and more dry days are the root causes of five consecutive failed rainy seasons (2021-2022) in eastern Africa.**

# CLEAR LINK BETWEEN CLIMATE CHANGE AND THE PROBLEM

## ➤ Observed trends and future projections

- Temperature rise
- Rainfall variability
- Extreme events

Average temperature anomalies over IGAD region





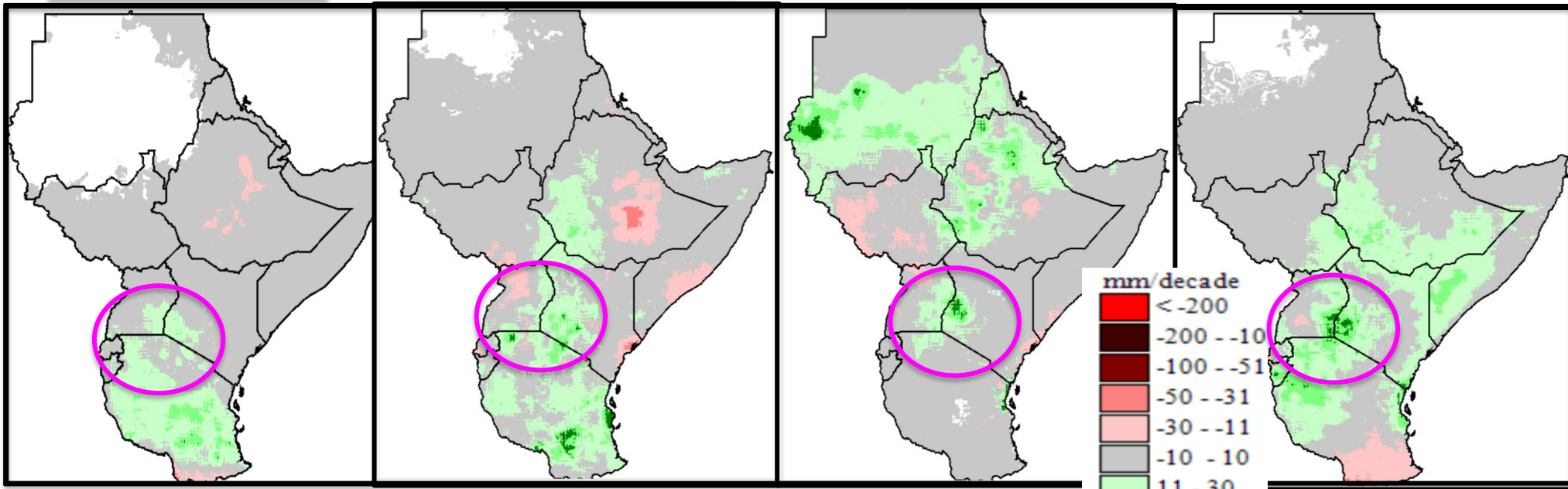
# CLEAR LINK BETWEEN CLIMATE CHANGE AND THE PROBLEM

Dec-Jan

Mar-May

Jun-Sep

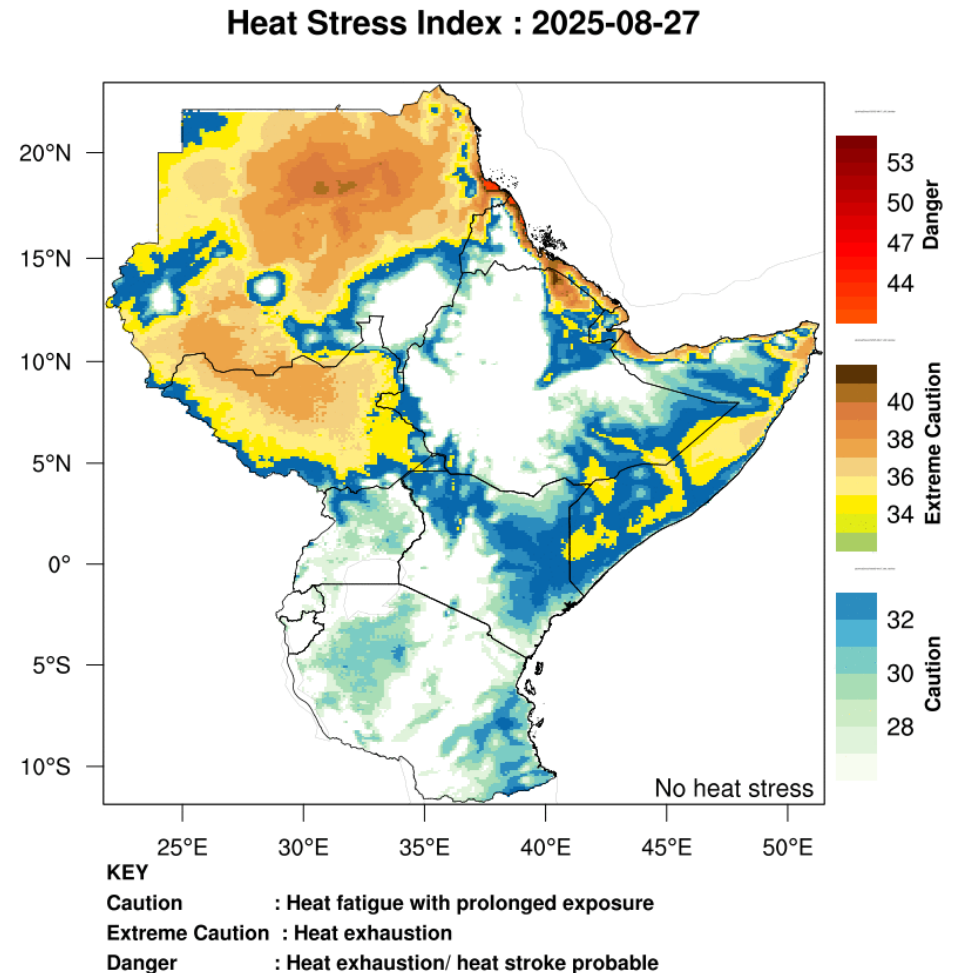
Oct-Dec



- Increased seasonal rainfall in Western Kenya and the Lake Victoria basin

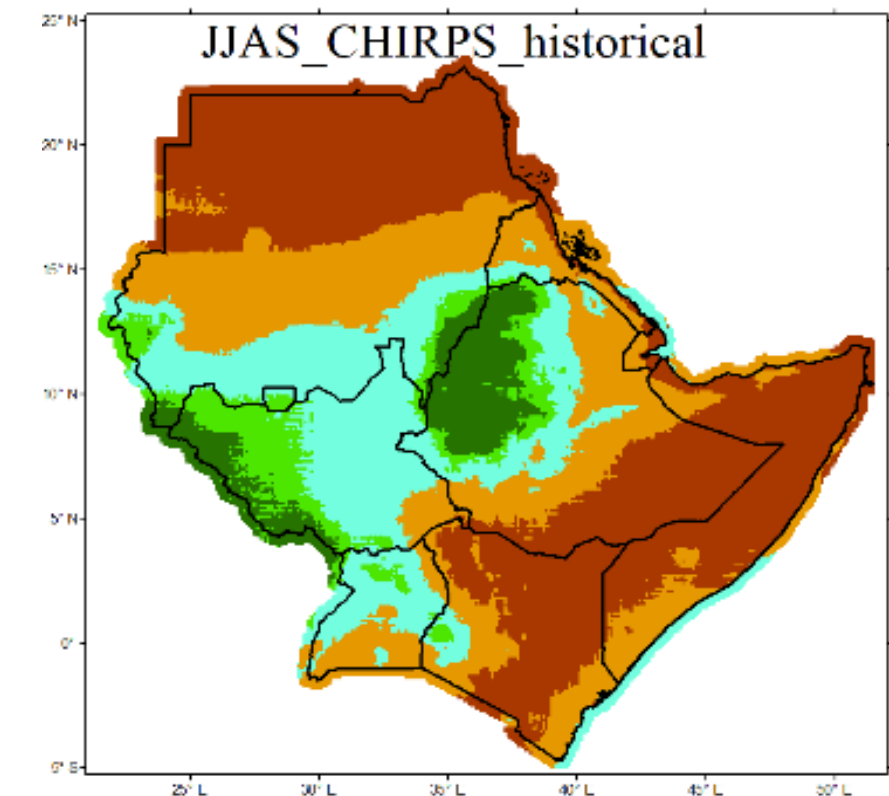
# EVIDENCE OF CLIMATE IMPACTS ON VULNERABLE SECTORS

- Show how climate hazards translate into sectoral impacts:
- **Agriculture & food security** → crop failure, livestock losses.
  - **Health** → malaria moving into new altitudes, cholera outbreaks after floods, heat stress.
  - **Water** → reduced availability, salinization, conflicts.

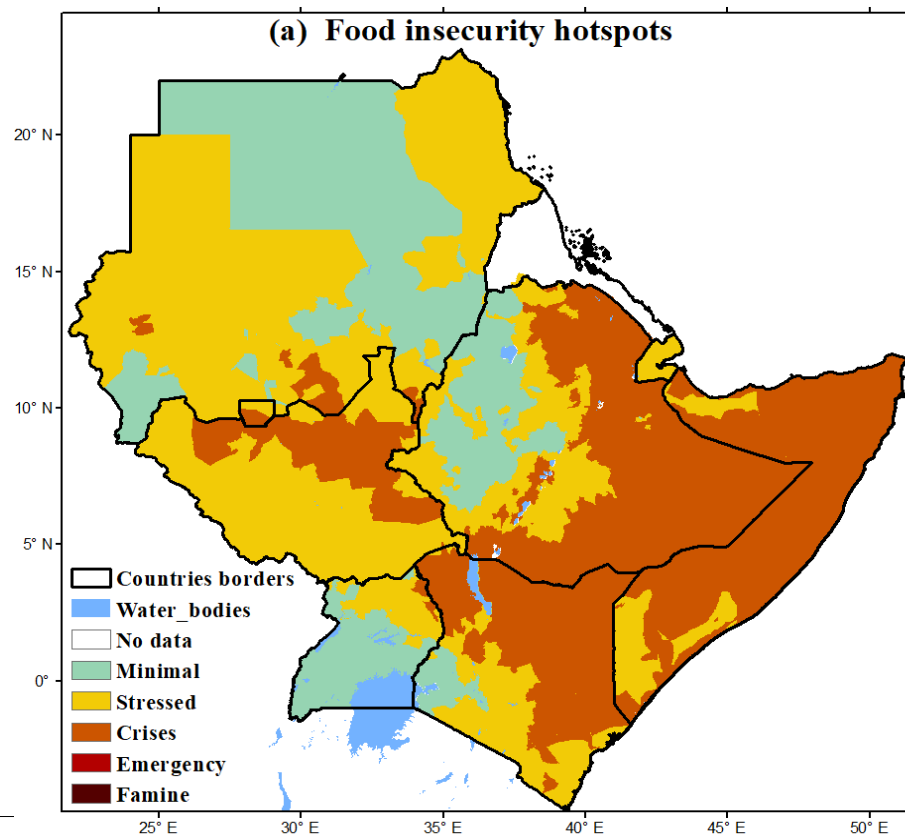


# ATTRIBUTION TO CLIMATE CHANGE (NOT JUST POVERTY OR MISMANAGEMENT)

- Distinguish climate-driven risks from baseline vulnerabilities.



Very high High Moderate low Very low



## JUSTIFICATION FOR ADAPTATION / MITIGATION MEASURES

- Show how interventions are designed **because of climate change** (not just development).
- Example:
  - **Weak rationale:** “We will build irrigation systems to improve food production.”
  - **Strong climate rationale:** “We will promote water harvesting and small-scale irrigation specifically to address increasing rainfall variability and prolonged dry spells projected under climate change scenarios.”

## USE OF CLIMATE DATA AND PROJECTIONS

- Reference **regional models and scenarios** (e.g., ICPAC climate models, CMIP6, IPCC AR6, WMO State of Climate reports).
- Use maps, graphs, or trendlines where possible.
- Demonstrate how the project aligns with **National Adaptation Plans (NAPs)** and **NDC priorities**.

## .DIFFERENTIATION FROM BUSINESS-AS-USUAL DEVELOPMENT

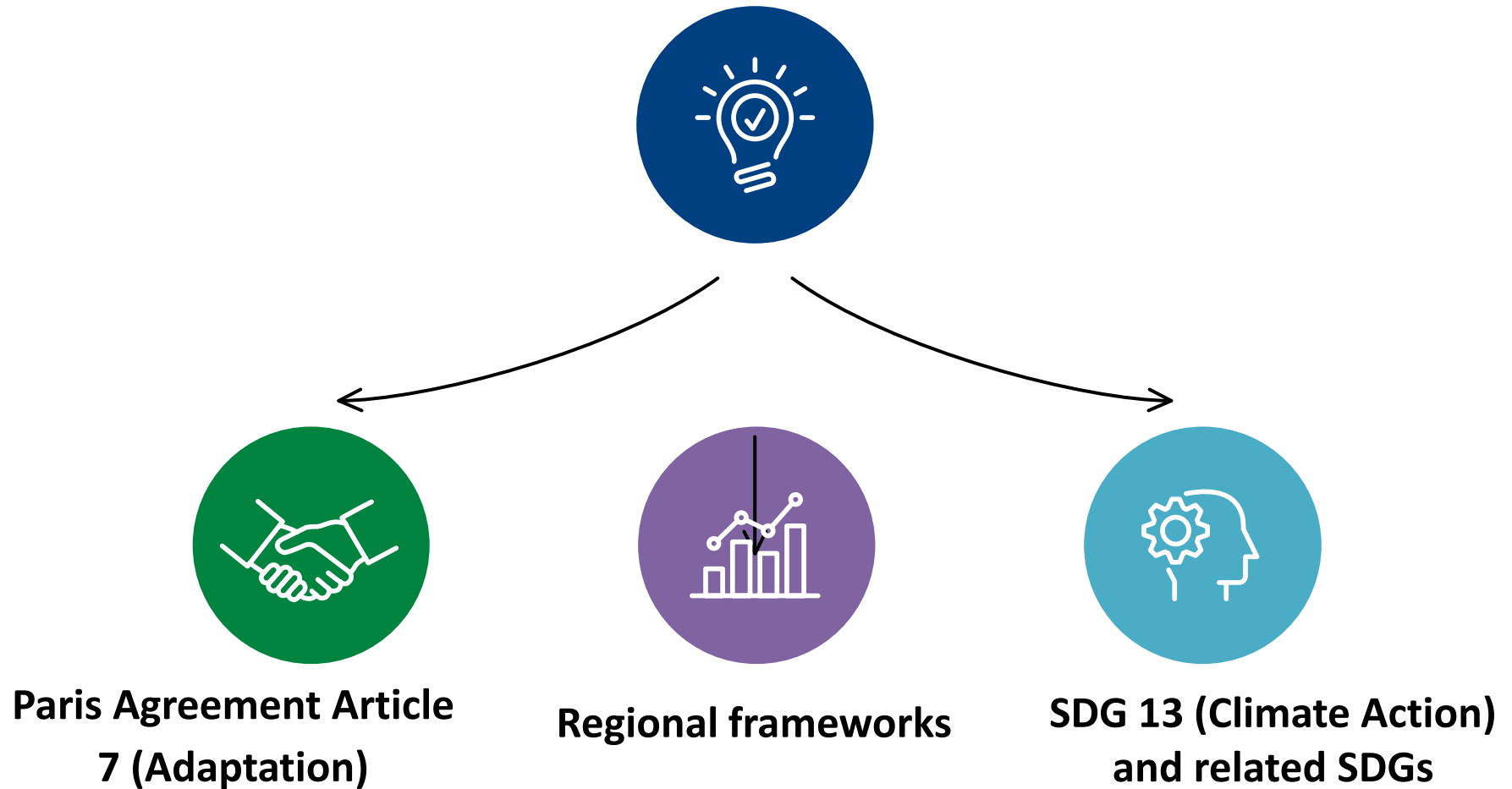
- Funds (GCF, AF) want to see a **“climate additionality”** argument:
  - What would happen **without climate change** (baseline development scenario)?
  - What is needed **because of climate change** (climate-proofing, adaptive measures)?



## INTEGRATION OF CROSS-CUTTING RISKS

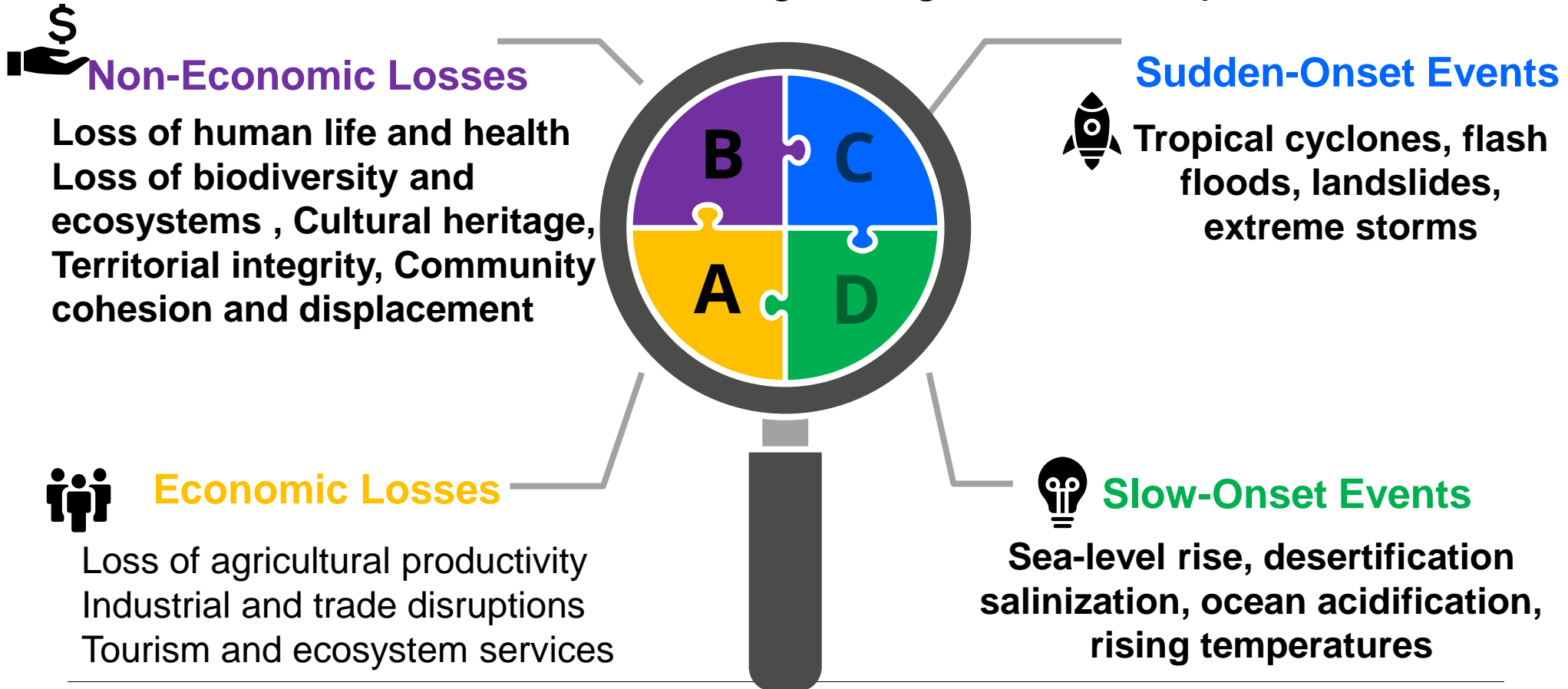
- Highlight **multi-sectoral climate impacts**:
- food–water–health–migration–conflict linkages.
- Mention **compound risks** (e.g., drought + conflict → displacement).

# Regional and Global Alignment

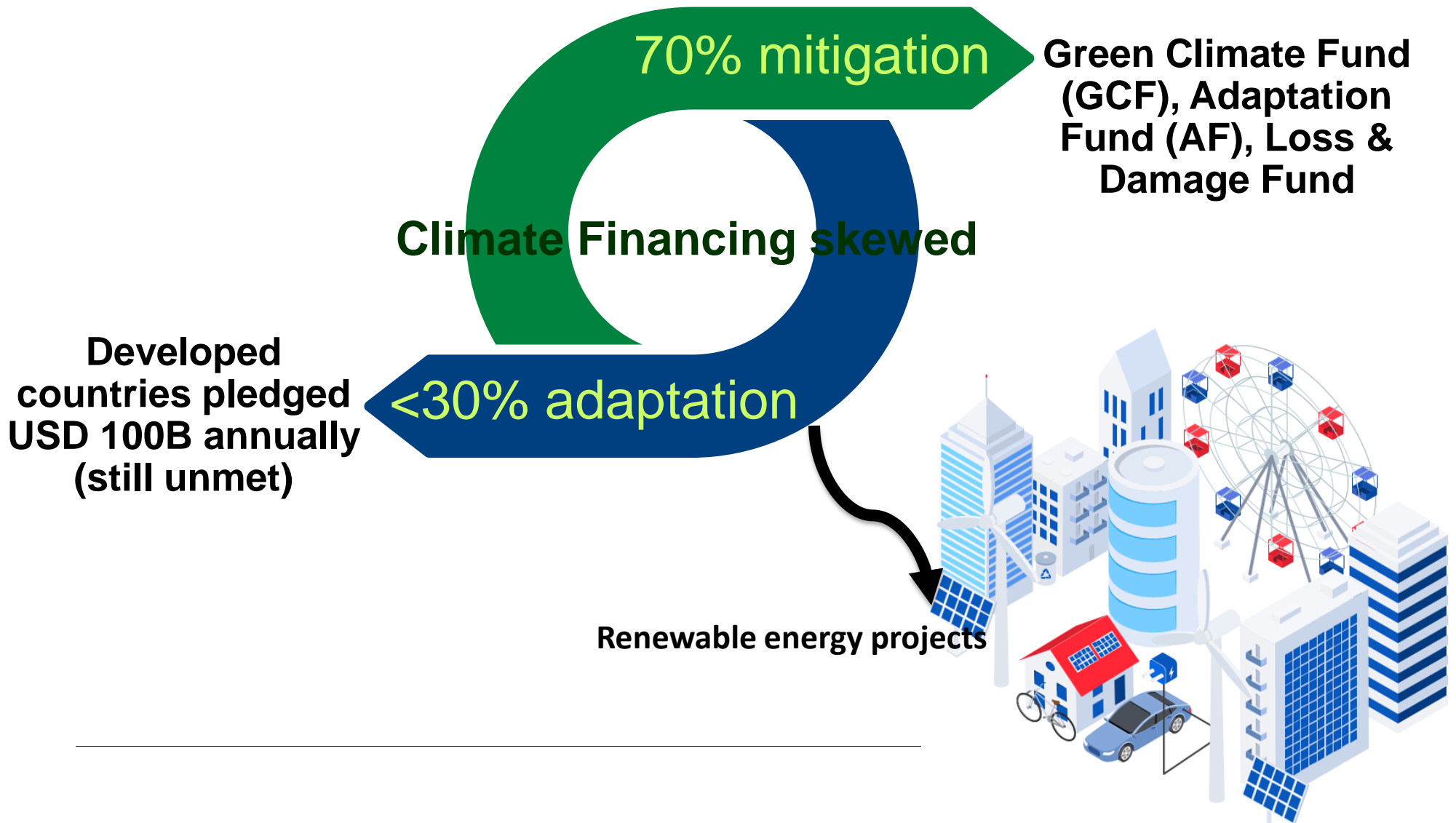


# LOSS AND DAMAGE RELATED TO CHANGES IN CLIMATE

- **Loss and Damage (L&D):** Adverse impacts of climate change that **cannot be avoided** through mitigation or adaptation.



# GLOBAL CLIMATE FINANCE LANDSCAPE



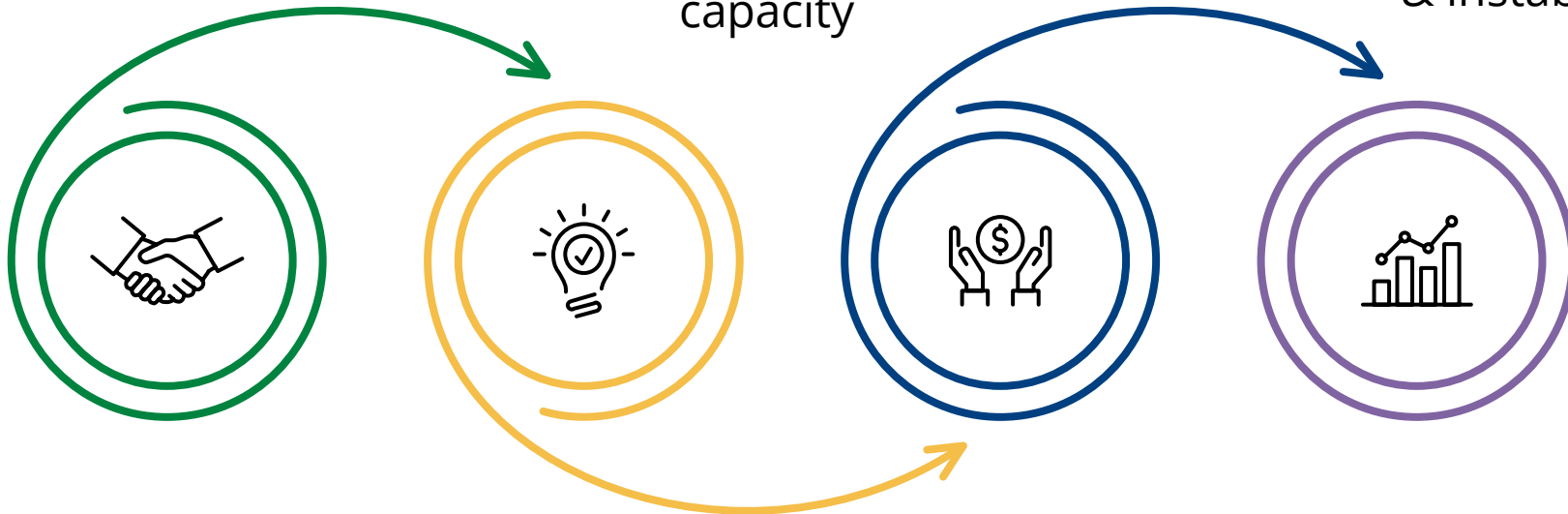
# KEY BARRIERS AND BOTTLENECKS FOR ACCESSING CLIMATE FINANCE

## Technical

Limited proposal-writing & MRV capacity

## Political

Fragile governance & instability



## Institutional

Few accredited entities

## Financial

High fiduciary standards,  
lack of co-financing

# ROLE OF IGAD-ICPAC

**Supporting Member States: proposal development & readiness**

**Regional coordination hub for climate finance & resilience**



**Driving regional programs: drought resilience, climate security, climate-health**

**Pursuing accreditation to GCF & AF for direct access**



# FUTURE OPPORTUNITIES



**Loss & Damage  
Fund:  
operationalized at  
COP28+**



**Renewable energy  
and nature-based  
solutions**

**Green/blue bonds,  
blended finance,  
carbon markets**



**Regional cross-border  
projects (water,  
migration, early warning)**



# STRATEGIC PATHWAYS TO UNLOCK FINANCE



**Scaling  
national &  
regional  
accreditation**



**Advocate for  
adaptation finance  
allocation for fragile  
regions**



**Strengthening the  
Bankable Pipeline  
of Proposals**



**Promoting  
regional  
integration  
projects for scale  
& impact**



**Mobilizing private  
sector through  
PPPs**

# CONCLUSION & CALL TO ACTION

**Climate finance  
is not charity —  
it is justice**



**The Greater Horn of  
Africa must move  
from vulnerability →  
resilience**

**IGAD & EAC Member  
States must act  
collectively**

**Investing in  
resilience today  
secures tomorrow**

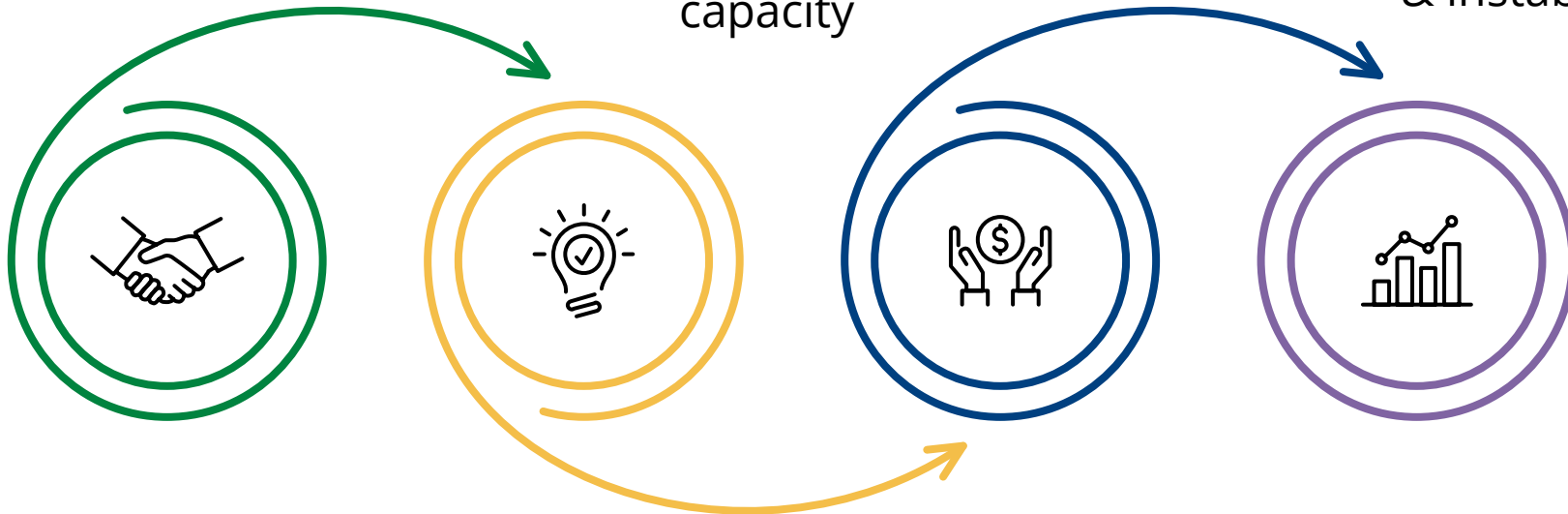
# KEY BARRIERS AND BOTTLENECKS FOR ACCESSING CLIMATE FINANCE

## Technical

Limited proposal-writing & MRV capacity

## Political

Fragile governance & instability



## Institutional

Few accredited entities

## Financial

High fiduciary standards, lack of co-financing

# ROLE OF IGAD-ICPAC

**Supporting Member States: proposal development & readiness**

**Regional coordination hub for climate finance & resilience**



**Driving regional programs: drought resilience, climate security, climate-health**

**Pursuing accreditation to GCF & AF for direct access**

# FUTURE OPPORTUNITIES



**Loss & Damage  
Fund:  
operationalized at  
COP28+**



**Renewable energy  
and nature-based  
solutions**

**Green/blue bonds,  
blended finance,  
carbon markets**



**Regional cross-border  
projects (water,  
migration, early warning)**





# STRATEGIC PATHWAYS TO UNLOCK FINANCE



**Scaling  
national &  
regional  
accreditation**



**Advocate for  
adaptation finance  
allocation for fragile  
regions**



**Strengthening the  
Bankable Pipeline  
of Proposals**



**Promoting  
regional  
integration  
projects for scale  
& impact**



**Mobilizing private  
sector through  
PPPs**

# CONCLUSION & CALL TO ACTION

**Climate finance  
is not charity —  
it is justice**



**The Greater Horn of  
Africa must move  
from vulnerability →  
resilience**

**IGAD & EAC Member  
States must act  
collectively**

**Investing in  
resilience today  
secures tomorrow**

**THANK YOU!**

[www.icpac.net](http://www.icpac.net)

