

Gender Mainstreaming Opportunities Global Environment Facility



Bridging the GAP: From Access to Action

**Training for UNFCCC National Gender
and Climate Change Focal Points**

01 December 2023

COP 28, Dubai



A GLOBAL PARTNERSHIP

Largest environmental multi-donor trust fund

Financial mechanism of international environmental conventions



18 AGENCIES



FAMILY OF TRUST FUNDS

GEF Trust Fund



Serves CBD, UNFCCC, UNCCD, Minamata Convention, Stockholm Convention

LDCF-SCCF Trust Funds



Serves UNFCCC

GBF, Nagoya Trust Fund



Serves CBD

GEF's Unique Role



- Serves 6 multilateral environmental agreements (MEAs) as financial mechanism
- Supports implementation of MEAs and goals through:



- Functions under guidance/decisions from COP and is accountable:
 - Participation in negotiations and mandated events, GEF report highlighting response, response to Party inquiries
- Recent expansion of MEA mandates and fund arrangements



Convention on
Biological Diversity



MINAMATA
CONVENTION
ON MERCURY



Stockholm Convention
on persistent organic
pollutants (POPs)



United Nations
Convention to Combat
Desertification



United Nations
Framework Convention on
Climate Change

GEF-8: HEALTHY PLANET, HEALTHY PEOPLE

Unified action towards 2030 Goals and Commitments

FOCAL AREAS

Biodiversity

Climate change mitigation

Land degradation

International waters

Chemicals and waste

INTEGRATED PROGRAMS

Food Systems

Ecosystem Restoration

Sustainable Cities

Amazon, Congo, and Critical Forest Biomes

Circular Solutions to Plastic Pollution

Blue and Green Islands

Clean and Healthy Ocean

Greening Transportation Infrastructure Development

Net-Zero Nature-Positive Accelerator

Wildlife Conservation for Development

Elimination of Harmful Chemicals from Supply Chains

GLOBAL PROGRAMS

Mobilizing the Financial Sector for Environmental Goals through Blended Finance

Community Action for Global Transformation - Small Grants Program and Beyond

CROSS-CUTTING

Circular economy • Nature-based solutions • Gender responsiveness • Resilience • Private sector engagement

CLIMATE CHANGE

GOAL

Support developing countries to make transformational shifts towards net-zero GHG emissions and climate-resilient development pathways.

Major objectives

1. Innovation, technology transfer, and enabling policies

1.1. Efficient use of energy and materials.

1.2. Transition to decarbonized power systems.

1.3. Zero-emission mobility.

1.4. Nature-based Solutions.

2. Enabling activities

2.1. Support capacity-building needs for transparency through the CBIT.

2.2. Support relevant Convention obligations and enabling activities.

Major contributions to GEBs and MEAs

Support for Paris Agreement alignment.

Generation of significant emission reductions.

Strong support for nature-based solutions with high mitigation potential.

PROJECTS MODALITIES

Full-Sized Project (FSP): over US\$2M in project financing (grant) amount
Project Identification Form (PIFs) Approved by **Council** (twice a year in their meetings)

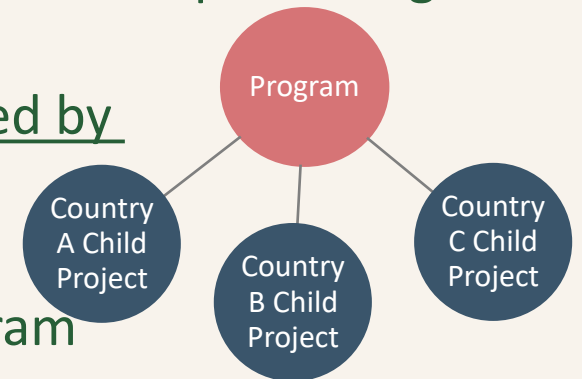
Medium-Sized Project (MSP): US\$2M or less
PIFs Approved by **GEF CEO** (on a rolling basis)

Enabling Activities (EA) entails the preparation of a plan, strategy or report to fulfill commitments under a Convention
EAs are Approved by **GEF CEO** (on a rolling basis)

Program: a longer term and strategic arrangement of individual yet interlinked projects that aim at achieving large-scale impacts on global environment

Program Framework Document (PFDs) Approved by **Council** (twice a year in their meetings)

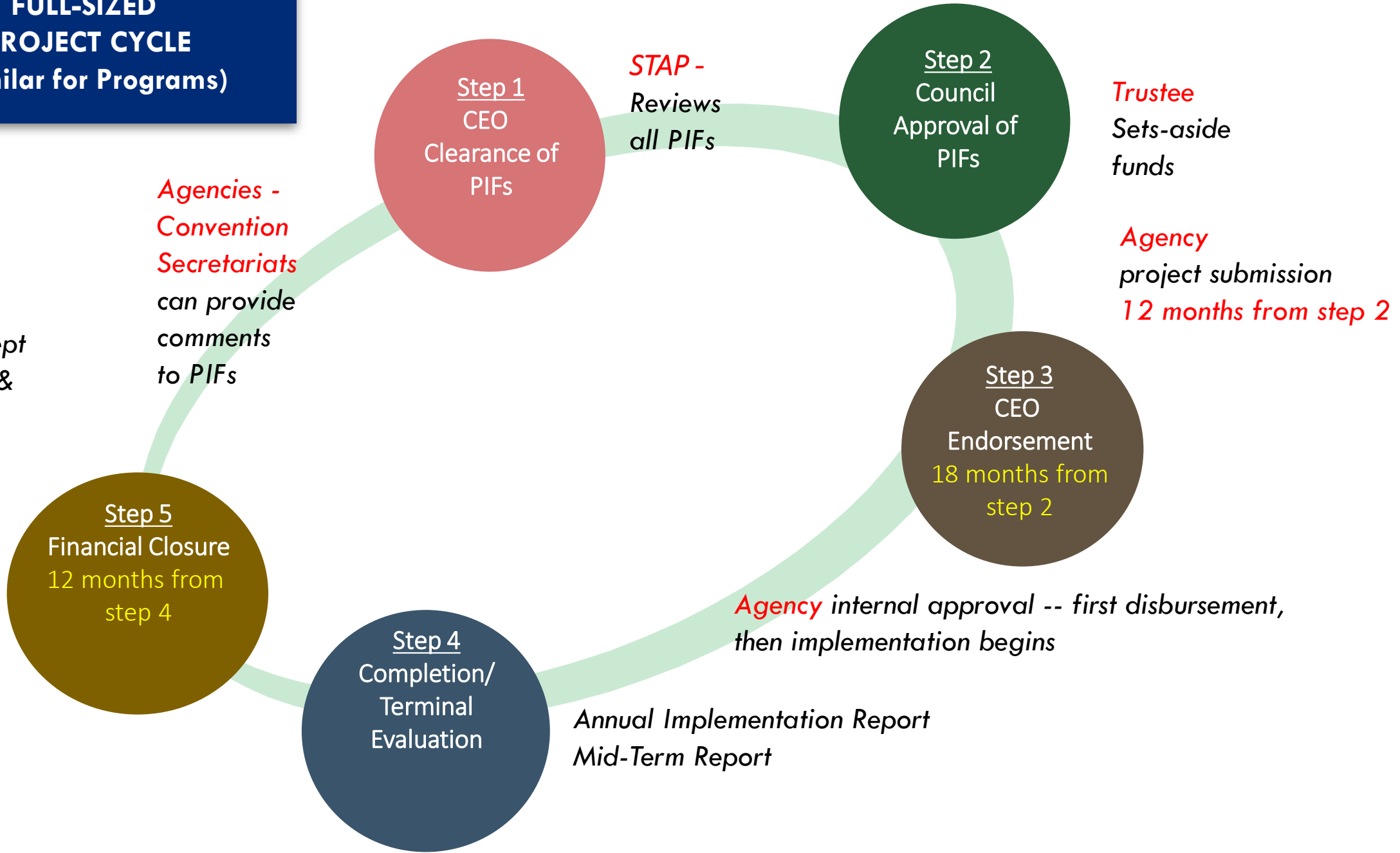
Child Project: an individual project under Program



**FULL-SIZED
PROJECT CYCLE
(similar for Programs)**

START

*OFP - LoE
project concept
consultation &
development*



Agencies - Convention Secretariats can provide comments to PIFs

STAP - Reviews all PIFs

Trustee Sets-aside funds

Agency project submission 12 months from step 2

*Step 3
CEO Endorsement
18 months from step 2*

Agency internal approval -- first disbursement, then implementation begins

*Annual Implementation Report
Mid-Term Report*

*Step 5
Financial Closure
12 months from step 4*

*Step 4
Completion/
Terminal Evaluation*

POLICY REQUIREMENTS FOR GEF PROJECTS AND AGENCIES

Gender Equality

**Environmental &
Social Safeguards**

**Stakeholder
Engagement**

Fiduciary Standards

Co-financing

Grievance Mechanism

GEF Policies & Guidelines:

<https://www.thegef.org/projects-operations/policies-guidelines>

Gender Equality



The Policy

- A catalyst for gender-responsive approaches in environmental projects
 - Women are PARTNERS and beneficiaries
 - Gender inequalities are addressed
- Minimum requirements in project design

MEAs

- With gender action plans; gender-specific targets and mandates

Gender Equality – Environmental action

- Mutually-supportive; win-win; co-benefits

Report

- Agencies reports on projects; GEF Sec reports to Council

GENDER EQUALITY

OBJECTIVE

To ensure equal opportunities for women and men to participate in, contribute to and benefit from GEF-financed interventions

REQUIREMENTS

PIF (Project Concept)

Indicative information on gender considerations in project description and relevant project components

CEO Endorsement/Approval (Project Development)

- Detailed **gender analysis & action plan**
- Gender-responsive measures for each project component
- Gender-sensitive indicators, sex-disaggregated targets

Midterm/Terminal Evaluation (Project Implementation)

- Information in PIRs, MTRs, TEs progress on gender-sensitive indicators, results
- Share good practice, methodologies and lessons learned

**To promote
gender equality
means...**



Developing policies, plans, strategies with gender experts and women's contributions

Including women in leadership positions or decision-making roles

**Introducing measures, policies, regulations, finance
- women to have equal access and rights to
resources and economic benefits**

**Considering important gender inequalities that
impede women's full participation and engagement:**

*Including women in
consultations, awareness-
raising activities, some
training IS NOT
ENOUGH!*

Household duties

Cultural and social norms

Education/literacy; access to technology

Language barriers

Gender-based violence

100% of Projects : with gender analysis / assessment



- GEF Secretariat
 - Policy instruments
 - Leadership, Gender specialist, thematic experts
- Governments
 - Guidance, mandate through the Council
 - Work of national steering committees, OFPs
- Implementing agencies
 - Compliance with agencies' own policies & standards, and GEF's policies
 - Building their teams' expertise over time
- CSOs, other non-state stakeholders
 - Proactivity
 - Active engagement throughout
- MEAs
 - Stronger integration of gender issues/gender action plans
 - Requests for support to the GEF in some cases

Good Practices on GENDER EQUALITY

Implementation of PCB Management Programs for Electric Cooperatives and Safe E-waster management (UNIDO)

- **Key Learnings:**

- **Early engagement of stakeholders** to gain the support and participation of the community
- **Integration of gender perspectives** in the project's **framework plan**, informed by gender analysis
- **Continuous capacity building** with simplified modes of learning for accessibility
- **Constant involvement of government** officials with visits, meetings and cooperation activities
- **Women leaders were featured:** national and GEF media coverage, International Women's Day, 7th GEF Assembly, webinars
- **Lessons learned** integrated in ESMP compliance report, lessons on gender mainstreaming incorporate

Good Practices on **GENDER EQUALITY**

Sustainable management of agrobiodiversity and vulnerable ecosystems recuperation in Peruvian Andean regions through Globally Important Agricultural Heritage Systems (GIAHS) approach

- **Key Lessons:**

- **Importance of the gender analysis** to inform the project design
- **Close collaboration** with communities - both women and men - throughout all project stages
- **Crucial participation of a gender expert** to guide the project team

- **Results:**

- **Women's empowerment** in leadership and economic autonomy
- **Increased women's participation in management practices** in biodiversity conservation
- **Recognizing women's role as active community members**, as economic actors and agrobiodiversity knowledge guardian



GEF Gender Partnership



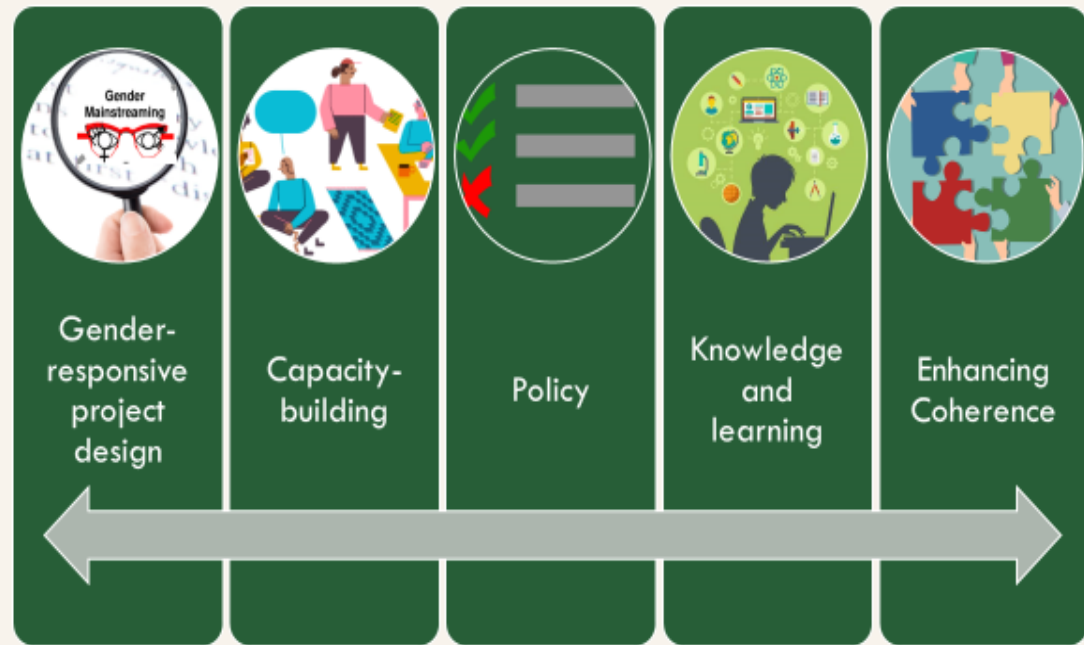
18 implementing agencies gender focal points

Gender officers of the Secretariats of the 5 MEAs

By invitation: Other stakeholders: women, youth, IPLCs, CSOs, think tanks



GEF Gender Partnership: Priorities



Brazil

Opportunities for engagements

Project concept consultations and development

- GEF Operational Focal Point
- GEF Implementing Agencies

National Steering Committees

- Focal points of the Conventions
- Non-government organizations, other stakeholders

NDC Development

- If with GEF funding, requirements to be gender-responsive (to some extent)

Through the GEF Gender Partnership

**THANK
YOU!**



The QR Code has all the information you require on the GEF.

Or contact: vcollanteslebale@thegef.org

