

# Solomon Is.



COP24 Side Event: Work of the LEG in supporting the LDCs on  
Adaptation, 4<sup>th</sup> December 2018, Katowice, Poland

Chanel Iroi  
Ministry of Environment, Climate Change, Disaster Management  
and Meteorology  
Solomon Islands

# NATIONAL ADAPTATION PLAN OF ACTION - Implementation

- NAPA submitted in 2008
- Priorities were:
  - ✓ Agriculture and food security, water and sanitation, human settlements and human health, education awareness and information
  - ✓ Low lying and artificially built-up islands
  - ✓ Waste management
  - ✓ Coastal protection
  - ✓ Fisheries and Marine resources
  - ✓ Infrastructure development
  - ✓ Tourism

## FUNDING THE PRIORITIES

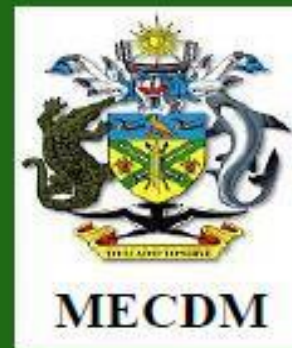
- Project One: ‘Enhancing resilience of communities in Solomon Islands to the adverse effects of climate change in agriculture and food security’ (SWoCK)
- MIE – UNDP
- Funding: Adaptation Fund - US\$5,533,500
- Completed in 2015
- Two significant impacts:
  - ✓ improved practices at farm level
  - ✓ expanded meteorological network

Solomon Is.

# Project Two



# CRISP



MECDM

## **COMMUNITY RESILIENCE TO CLIMATE AND DISASTER RISK IN SOLOMON ISLANDS PROJECT**



**GFDRR**  
Global Facility for Disaster Reduction and Recovery

# Project Funds

- PHRD – US2.73 (Government of Japan) – closed in 23 July 2018
- GFDDR – US1.8m – closed 31<sup>st</sup> Oct 2018
- LDC Fund – US7.3m – will close 31<sup>st</sup> May 2019
- Objective – Increasing the capacity of selected rural communities to manage the impacts of natural hazards and climate change risks

# Project Components

- A – Integration of risk resilience for the management of disaster and climate risk into the Recipient’s policy frameworks and practices
- B – Strengthening of climate and disaster risk information and communication
- C – Climate change adaptation and disaster risk reduction investments
- D - Project management and monitoring & evaluation

# 2018 Highlights – Comp A

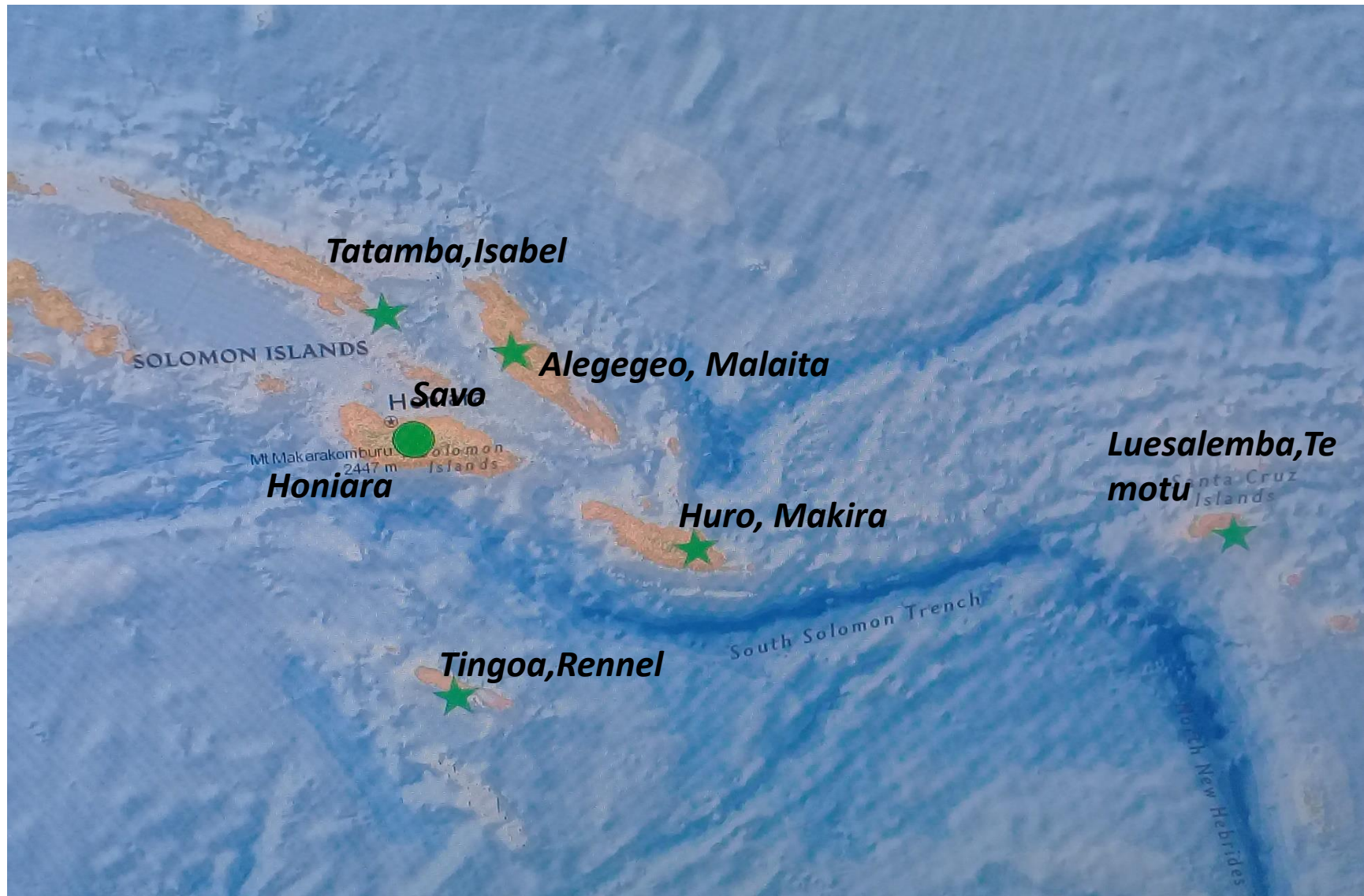
- Cabinet endorsement of the National Disaster Management Plan in Feb 2018
- Instreaming of Risk Resilience in the Ministry of Health and Medical Services - progressing

# Comp B highlights

- **Solomon Islands National Seismic Volcanic Tsunami Early Monitoring System established & ready for launching.**
- **Registration of SI Seismic Network in the Global Federal Seismological Digital Network**
- **MECDM Risk Information Management System ready for launching.**

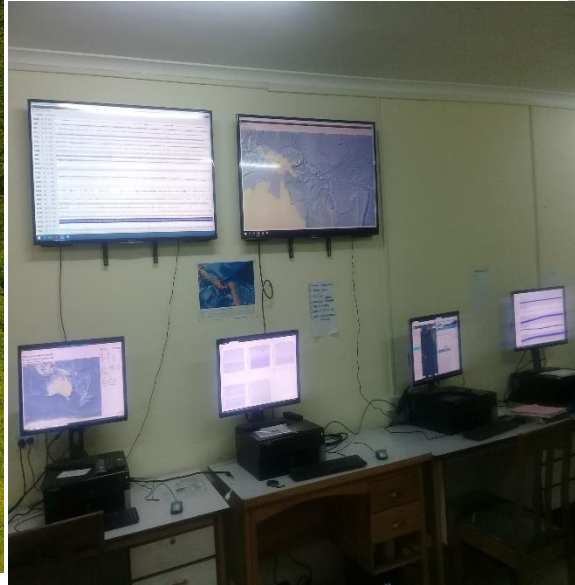
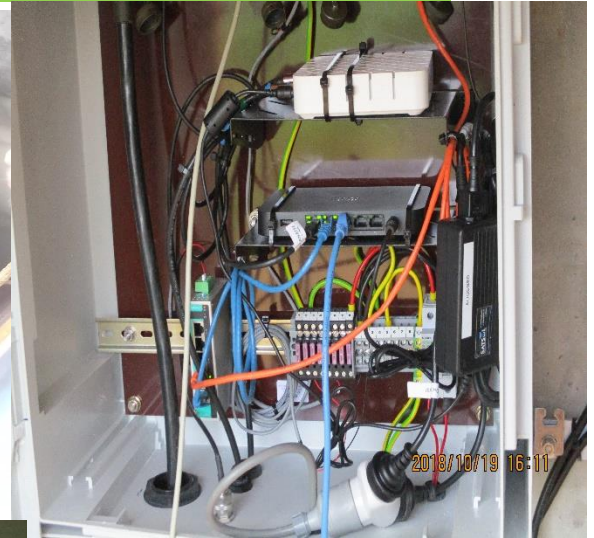


# Solomon Islands Seismic Network





# Strengthening climate and disaster risk information & early warning systems: SI Seismic Network.



# Comp C Highlights

- **Completed 26 community infrastructures under PHRD.**
- **Completed 28 CRISP community infrastructures. 28 more to be completed.**
- **6 Provincial Led (PL) projects under procurement with three under construction.**
- **Total completed PHRD and CRISP 55 projects inclusive of PL.**



# Mbelagha Rain Water Harvesting





Venga Evacuation Access, Santa Cruz, Temotu –  
Tsunami prone – Water Sources far from relocated  
families so proper road access essential.





**Duidui/Horabau 2 Bore Holes, 3 Reservoir tanks, 20 tap stands – Guadalcanal. Flood/Drought prone. Re-located from Weather costs due to earthquake/landslides disaster.**





# NANGU Gravity Fed – 15 tap stands, Santa Cruz, Temotu.

Tsunami, earthquake, cyclone, drought prone.





# Koli - 5 elevated Pumped Hand Dug Water Wells with reservoir tanks – Guadalcanal. Flood Prone.





## Project Three: Solomon Islands Water Sector Adaptation Project (SIWSAP)

- Funding – LDCF: US 6,850,000
- MIE – UNDP
- **Objective** - To improve the resilience of water resources to the impacts of climate change in order to improve health, sanitation and quality of life, and sustain livelihoods in targeted vulnerable areas
- **Completion** – June 2019



The coat of arms of the Solomon Islands is centered in the background. It features a shield with a yellow and green pattern, topped by a crown and a sunburst. The shield is flanked by two blue birds. Below the shield is a banner with the motto "TO LEAD IS TO SERVE".

Solomon Is.

# Outcomes

- **Outcome 1:** Water Sector - Climate Change Adaptation Response Plans formulated, integrated and mainstreamed in water sector-related and in broader policy and development works.
- **Outcome 2:** Increase reliability and improved quality of water supply in targeted areas.
- **Outcome 3:** Investments in cost-effective and adaptive water management interventions and technology transfer.
- **Outcome 4:** Improved governance and knowledge management for CCA in the water sector at the local and national levels.

# Highlights: Taro Desalinisation plant





# Collection of filtrated water





# Hand Pump water supply





# Tigoa Hydromet AWS



# Way Forward

- Projects have addressed some of the NAPA priorities and there are pipe line projects to be implemented.
- Accessing GCF National Adaptation Planning with synergies in NDC





Thank you