



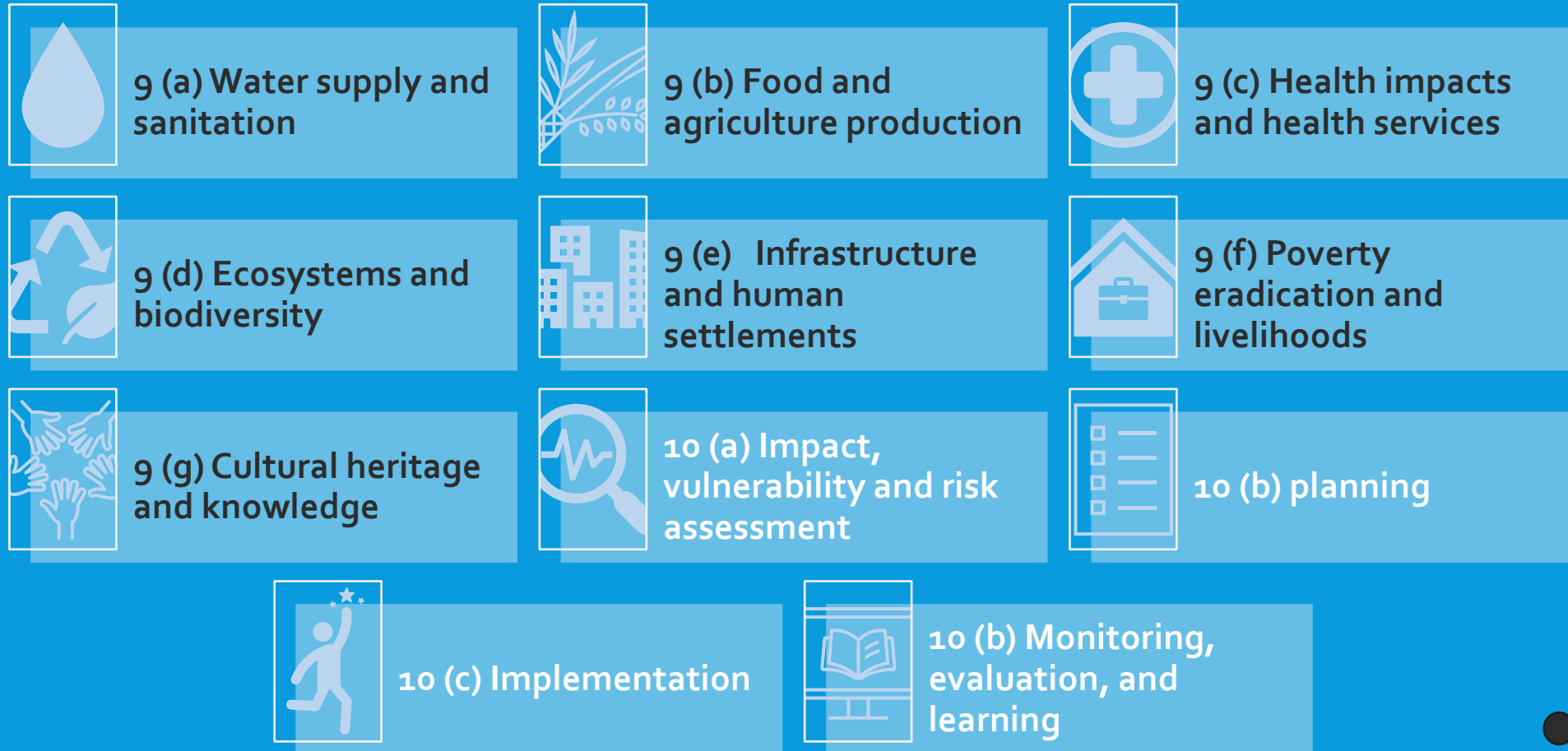
# GLOBAL GOAL ON ADAPTATION

Dalia Hashweh

# BACKGROUND

- The Paris Agreement (1/CP.21, Article 7) established the **global goal on adaptation (GGA)** of enhancing adaptive capacity, strengthening resilience, and reducing vulnerability to climate change, with a view to contributing to sustainable development and ensuring an adequate adaptation response in the context of the temperature goal.
- CMA 3 established and launched a two-year **Glasgow–Sharm el-Sheikh work programme** on the global goal on adaptation (COP 26)
- CMA 5 concluded the Glasgow–Sharm el-Sheikh work programme and adopted the **United Arab Emirates Framework for Global Climate Resilience** (COP 28)
- CMA 5 also launched the two-year **United Arab Emirates–Belém work programme on indicators**

# THE UAE FRAMEWORK FOR GLOBAL CLIMATE RESILIENCE WITH 11 TARGETS (2/CMA.5)



● Thematic targets

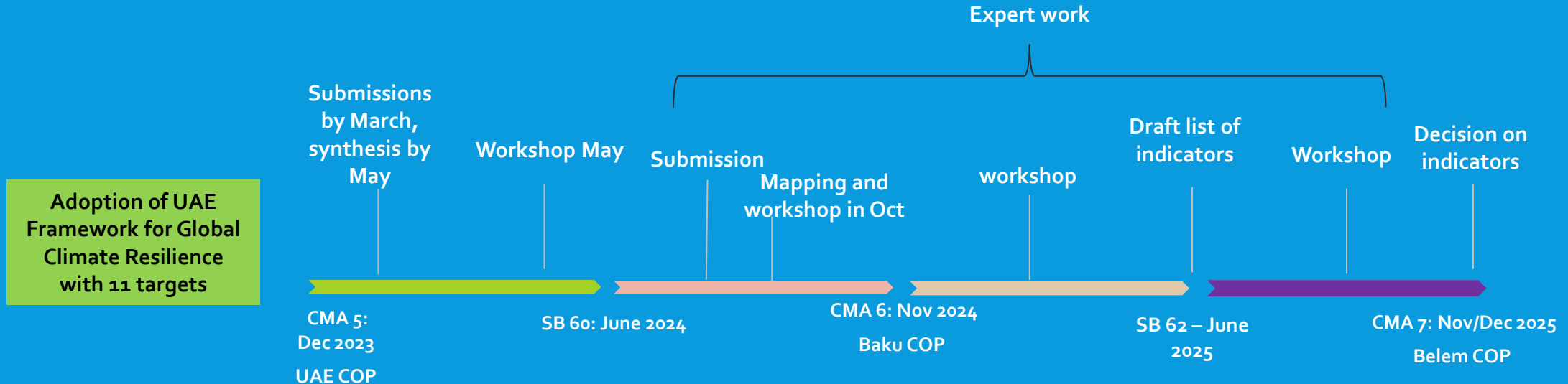
● Dimensional targets

# UAE-BELÉM WORK PROGRAMME ON INDICATORS

Outlook for the work on the UAE-Belem Work Programme on indicators and how this can influence better decisions in implementation of adaptation initiatives.

How can COP29 outcomes inform ongoing efforts on adaptation in the region?

A two-year **UAE – Belém work programme on indicators** for measuring progress achieved towards the targets of the UAE Framework for Global Climate Resilience to identify and, as needed, develop indicators and potential quantified elements for those targets



New agenda item for consideration of matters relating to the global goal on adaptation (2/CMA.5 paragraph 38 (a-e))

# UAE-BELÉM WORK PROGRAMME - KEY MILESTONES & CURRENT STATUS

- COP 29 was the half-way point in the work programme
- Work of experts, 7000 indicators from Parties and organizations
- 5 mandated workshops and submission calls

78 experts convened

Compilation of 7,000  
indicators (approx.)

5 mandates  
workshops  
(2 in 2024, 3 in 2025)

# OUTLOOK FOR THE WORK ON THE UAE-BELÉM WORK PROGRAMME

- **Guidance** to experts for work in 2025 and to enhance collaboration
- **Additional criteria** when considering indicators
- **Manageable set of 100 indicators:**
  - Globally applicable
  - A menu capturing different adaptation contexts
  - Enable assessment of progress towards the framework targets

(CMA.6 para 17)

Measurability  
and data  
availability

Ability to use  
available data

Established and  
available  
metrics

Relevance to  
multiple  
thematic  
targets

Outcome and  
output oriented

# OTHER OUTCOMES

- Launched the **Baku Adaptation roadmap**
  - Article 7.1 of the Paris Agreement and implementing the UAE Framework
  - Exchange of knowledge, experience and information sharing
- **Baku high-level dialogue on adaptation:**
  - to enhance the implementation of the UAE Framework



# THE STATE OF PLAY: AFTER BAKU, BEFORE BELÉM

- Parties have now agreed on the timeline for the remainder of the UAE-Belém work programme in 2025 up to CMA7:
  - Experts continuing their work, Parties to agree at CMA 7
  - 3 workshops
  - Parties' views on the Baku Adaptation Roadmap
- Negotiations and adoption of final indicator package, CMA 7.

# IMPLICATIONS ON ONGOING ADAPTATION EFFORTS IN THE REGION

- **National Adaptation Plans**

- As noted in the CMA6 decision, NAPs are one of the important channels via which the targets could be achieved
- A need to provide guidance to Parties on how to integrate the targets and indicators into their NAPs (aligned with GGA targets)

- **Reporting**

- Future GSTs
- Take into account the UAE Framework when preparing BTRs and Adaptation Communications

- **Cross-cutting considerations**

- Indicators to capture social elements of adaptation
- Enabling factors, including means of implementation for adaptation actions
- Collaboration with the IPCC, with a special IPCC-SBSTA event at SB 62

# IMPLICATIONS ON ONGOING EFFORTS ON ADAPTATION IN THE REGION

## - CONCLUSION

- Aim of the GGA is to **enhance adaptive capacity, strengthen resilience and reduce vulnerability** to climate change
- **This means setting specific, measurable targets and guidelines for global adaptation action:** indicators that can help countries track, assess, and inform adaptation and strengthen monitoring, evaluation, and learning (MEL) systems
- While targets and indicators are at the core of the UAE-Belém work programme, negotiations and technical discussions focus on a range of cross-cutting aspects:
  - Outcome to guide Parties in preparing BTRs and Adaptation Communications → critical for accessing climate finance
  - Linkages to other processes (GST, NAPs)



# THANK YOU

For more information, please visit:  
[unfccc.int/topics/adaptation-and-resilience/workstreams/gga#tab\\_home](https://unfccc.int/topics/adaptation-and-resilience/workstreams/gga#tab_home)

Questions? [GGA@unfccc.int](mailto:GGA@unfccc.int)