

14th Workshop Facilitative Sharing of Views

*primero
la gente*

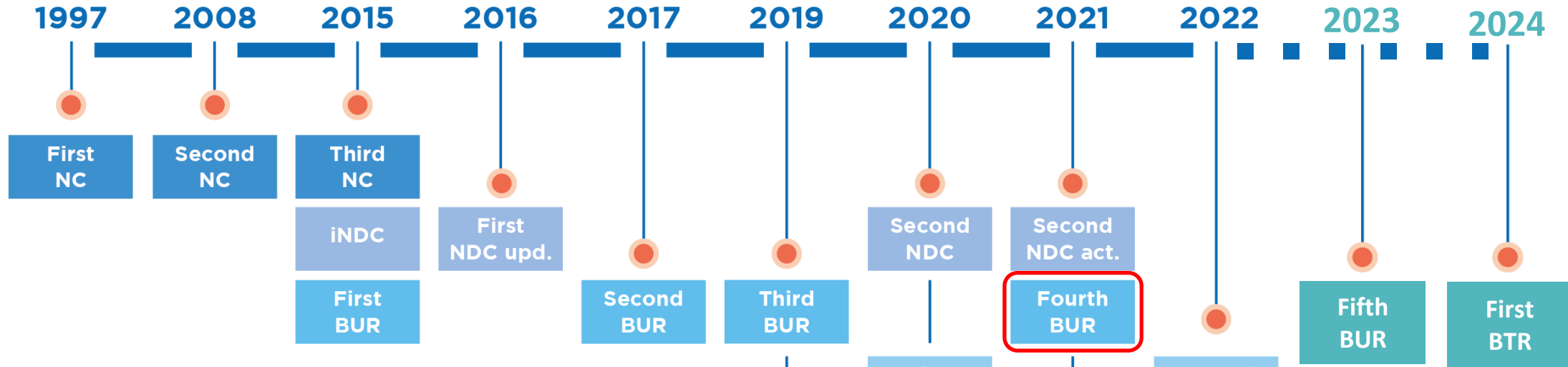


4th BUR Argentina



Ministerio de Ambiente
y Desarrollo Sostenible
Argentina

Argentina's Compliance to the UNFCCC



BUR: Biennial Update Report
 FREL: Forest Reference Emission Level
 iNDC: intended Nationally Determined Contribution
 NC: National Communication
 NDC: National Determined Contribution
 NIR: National Inventory Report
 REDD+ TA: REDD+ Technical Annex

Second NDC

Target Year **2030**

Not to exceed **349** MtCO₂e

27,7% more ambitious

- National
- Participatory
- Just and equitable
- Ambitious

Law n° 27,520 Minimum Standards for Adaptation and Mitigation to Global Climate Change

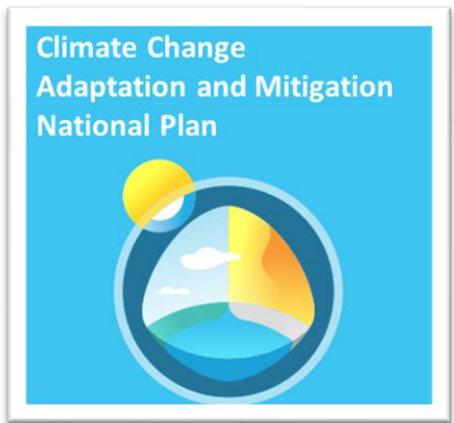


Ministerial Roundtable	Chaired by the Chief of Cabinet Minister and made up of all ministries of the National Executive Branch.
Focal Point Roundtable	Inputs within their sectoral and cross-cutting jurisdictions, to build the countries common vision on climate action. Organized into Working Groups
Provincial Coordination Roundtable	Activities that promote the development of Climate Change Response Plans at the subnational level
Broad Roundtable	Bring together the contributions of the different sectors and stakeholders, both public and private.



NDCs

LTS



Argentina's 2nd NDC

Mitigation

Target
year
2030

Not to
exceed
349
MtCO₂e



Energy
Transition



Sustainable
Transportation



Industrial
Transformation



Ecosystems
Preservation



Circular economy

Adaptation

With a view to contributing to sustainable development and building a more equitable and just society, the Argentine Republic is committed by 2030 to:

- Raise awareness of the adverse effects of climate change and of the measures to be taken individually and collectively to respond to the challenge of protecting the planet with solidarity.
- Increase adaptive capacity, strengthen resilience and reduce vulnerability in infrastructures, communities and productive systems.
- Prioritize protection for vulnerable communities and social groups. Incorporating a gender and intergenerational equity perspective within climate policies.



Argentina

National Context



23 Provinces + 1 CABA

Population 46,044,703

CENSUS 2022

Livestock
(cattle)
54 mill heads

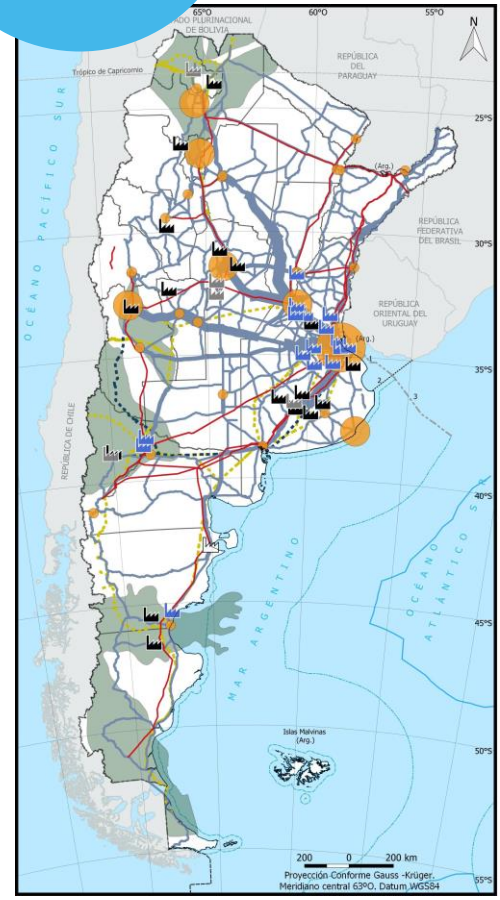
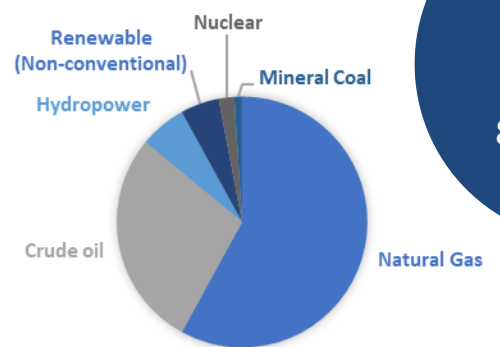
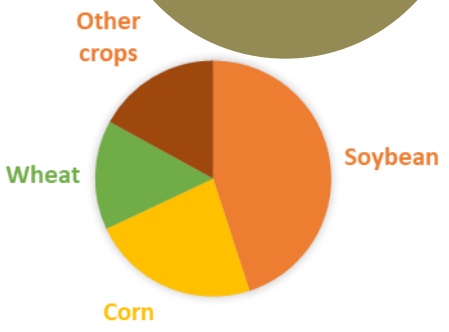
Native Forest
53.6 mill ha

Total Land Area*
3,761,274 km²

Crop Production
39 mill ha

Planted Forest
1.3 mill ha

Primary Energy Supply
82,000 k toe



Referencias

Limites político-administrativos

- 1. Lecho y subsuelo
- 2. Exterior del Río de la Plata
- 3. Lateral marítimo argentino-uruguayo
- Exterior de la plataforma continental
- Internacional
- Interprovincial
- Limite marítimo argentino-chileno
- Línea de costa
- Mar territorial
- Zona económica exclusiva (200 millas)

Localidades (cantidad de habitantes)

- 100.000 a 500.000
- 500.000 a 1.500.000
- Más de 1.500.000

Industrias

- Acero
- Aluminio
- Cal
- Cemento

Flujo de camiones (toneladas)

- 0 - 500.000
- 500.000 - 1.000.000
- 1.000.000 - 1.500.000
- 1.500.000 - 3.000.000
- Más de 3.000.000

Energía

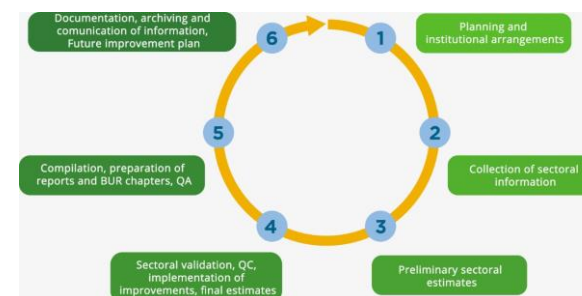
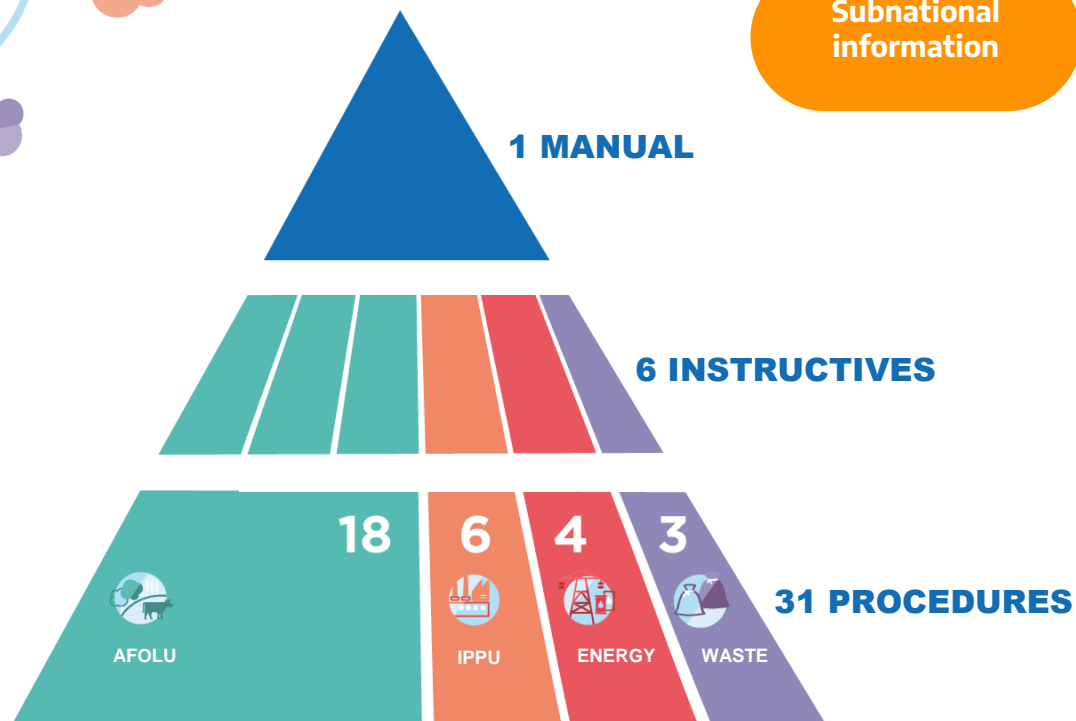
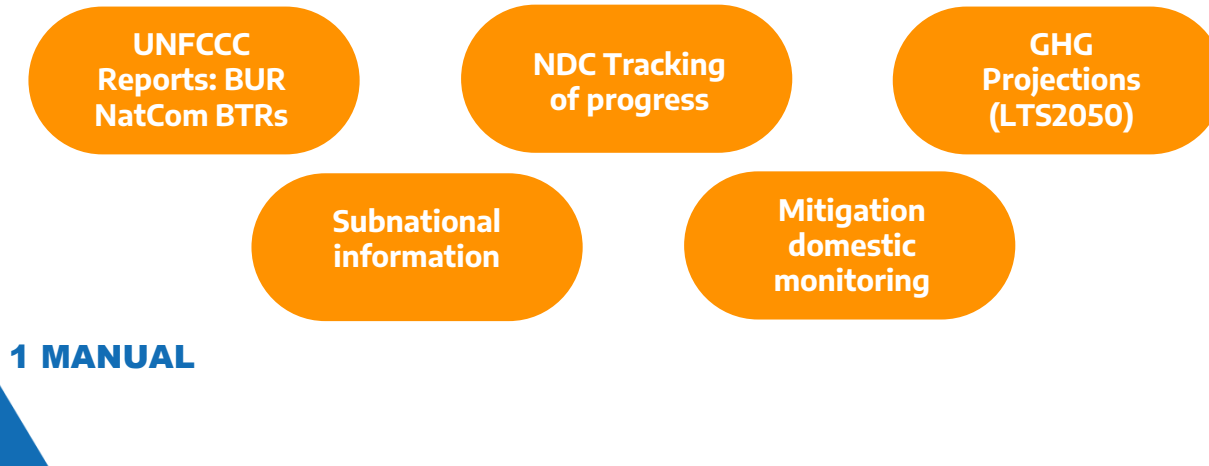
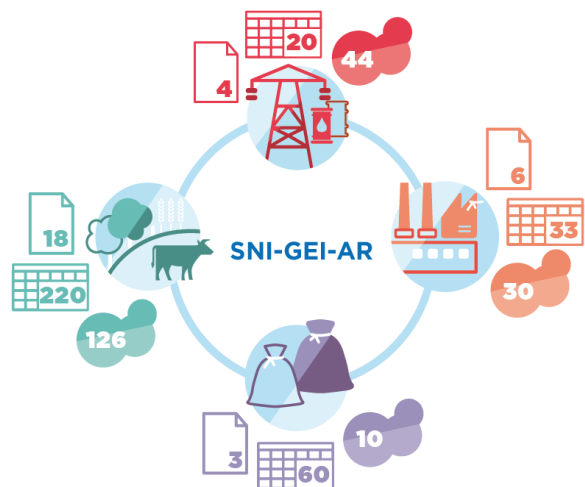
- Oleoductos
- Gasoductos
- Línea eléctrica (500kV)
- Cuencas sedimentarias

Mapa bicontinental

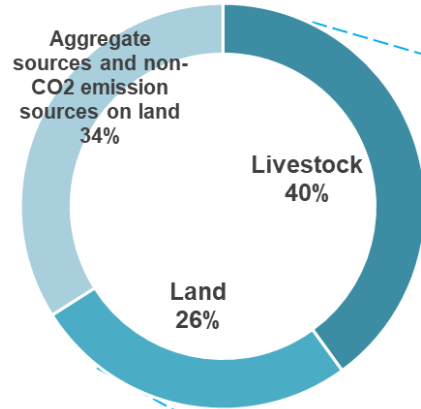
Total Land Area*

2,791,810 km² belonging to the American Continent and 969,464 km² belonging to the Atlantic Continent (including the South Orkney Islands) and the Austral Islands (South Georgia and South Sandwich Islands).

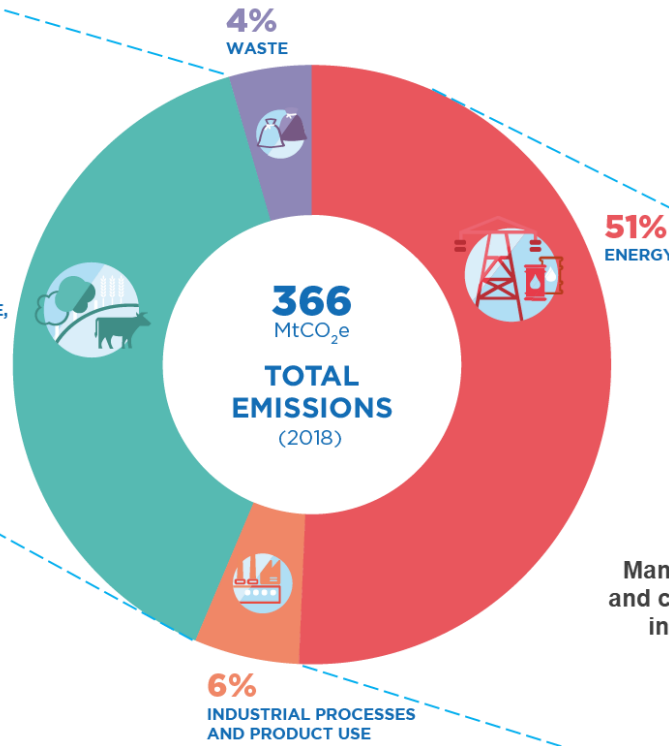
National GHG Inventory System (SNI-GEI-AR)



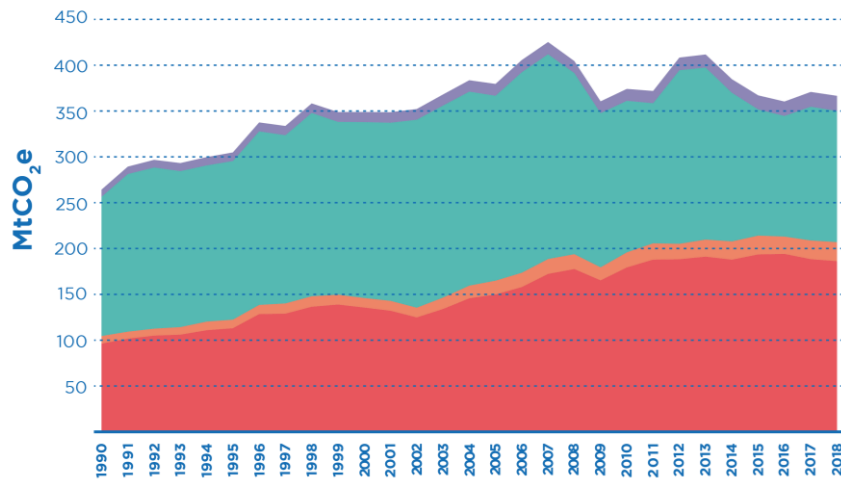
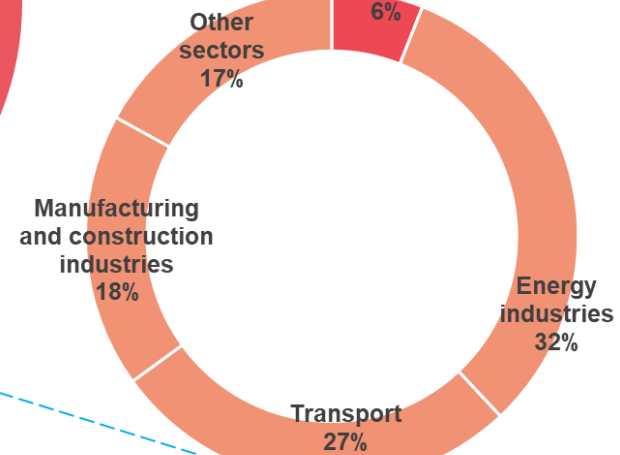
GHG Inventory - Main Results



39%
AGRICULTURE,
FORESTRY
AND OTHER
LAND USE



Fugitive
Emissions from
Fuels
6%

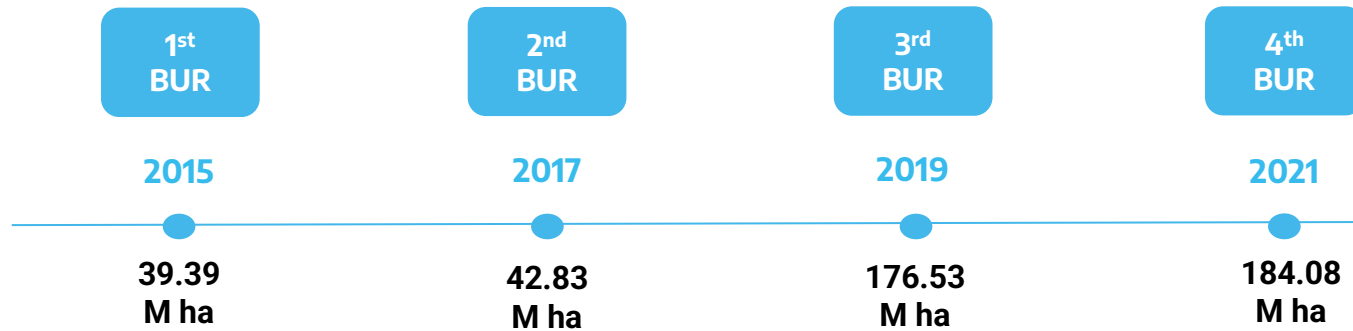


IPCC 2006 GL

GWP 2AR



Quality Improvements Over Time

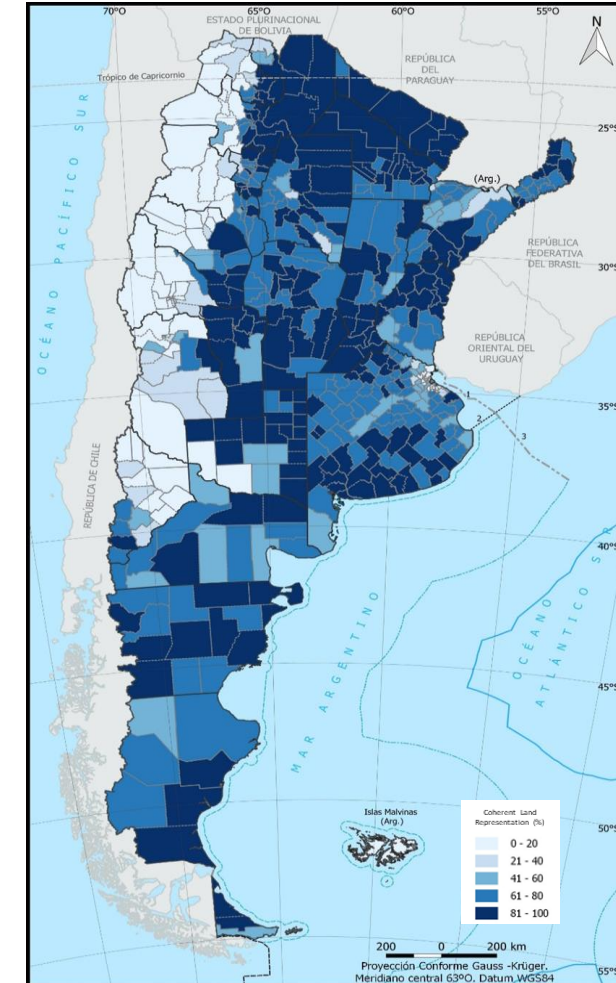


Main improvements in BUR4

IPPU: F-gases in the refrigeration and air-conditioning sector: transition from Tier 1 to Tier 2 using the **IPCC 2019 Refinement Guidelines**.

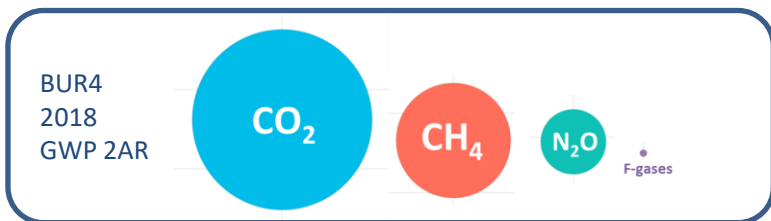
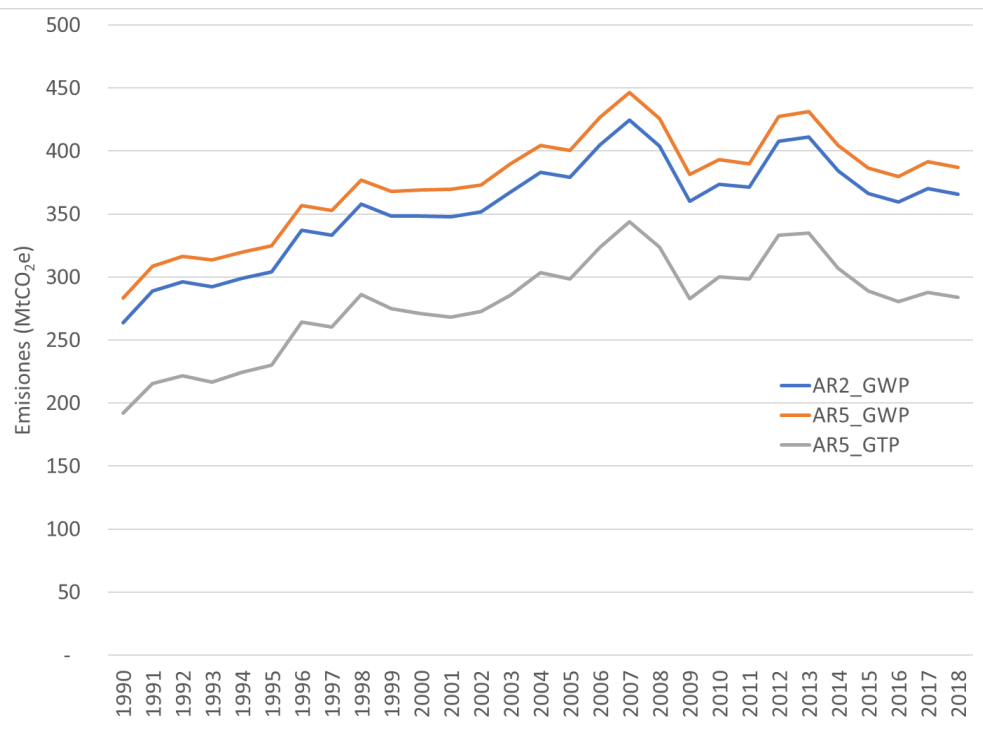
AFOLU: inclusion of a new category, Harvested Wood Products (**HWP**). Estimates made using the **IPCC 2019 Refinement Guidelines**.

AFOLU: inclusion of a new region, the Bosque Andino Patagónico, to the **coherent representation of lands**



Quality Improvements Over Time

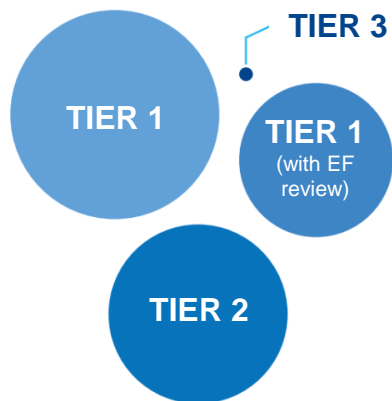
Emissions trend by metric



TIERs

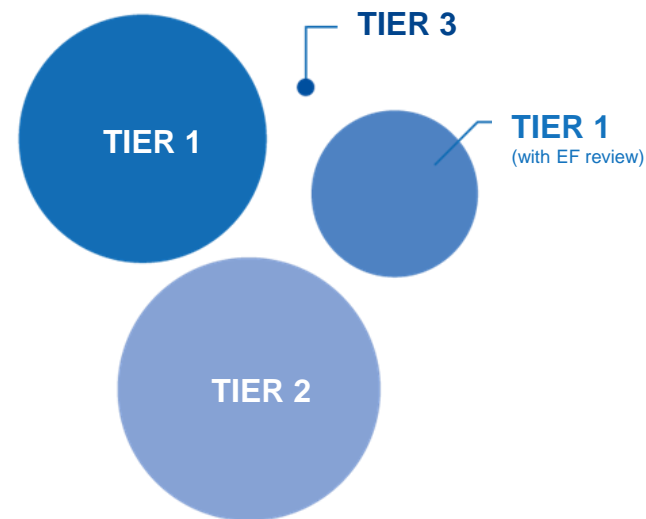
BUR 3

Tier 2 and 3: **34%**



BUR 4

Tier 2 and 3: **46%**



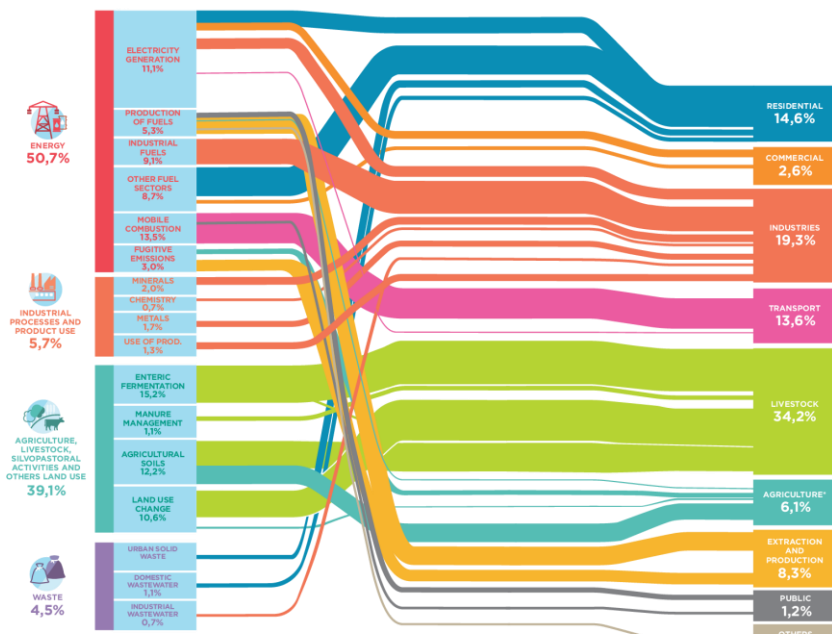
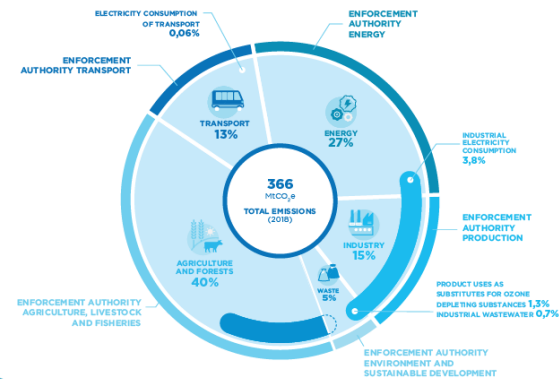
GHG Inventory communication



Web platform
 GHG emissions (interactive tool)
 Subnational GHG inventories
 GHG indicators
 Report (IBA 4)
 Booklet

<https://inventariogei.ambiente.gob.ar/>

GHG Inventory
 by Enforcement
 Authority



*Forestry activities are included within agriculture

GHG Inventory
 by End Use

Argentina



Mitigation actions - MRV

On-grid electricity generation from renewable sources

Isolated grid electricity generation from renewable resources

Diesel and gasoline blending with bio-fuels for road transport

Residential and street lighting

Hydropower generation

Nuclear power generation

Promotion of Bus Rapid Transit

Sustainable forest management (forest use and silvopastoral activities)

Native forest conservation

Planted Forest Promotion



Ministerio de Ambiente y Desarrollo Sostenible Argentina

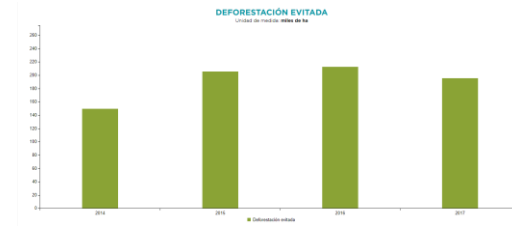
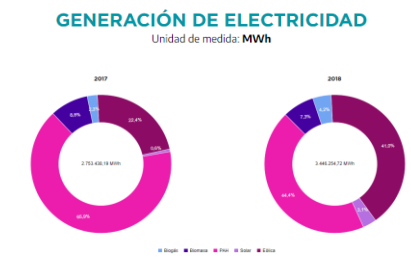
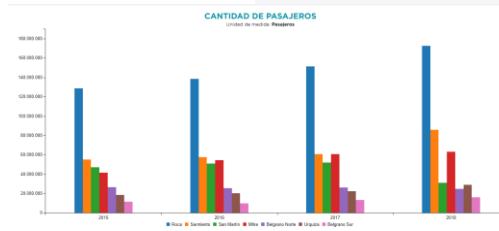
Inventario Nacional de Gases de Efecto Invernadero y Monitoreo de Medidas de Mitigación

MONITOREO DE MEDIDAS DE MITIGACIÓN PARA LA IMPLEMENTACIÓN DE LA CONTRIBUCIÓN NACIONAL DETERMINADA (NDC) DE LA ARGENTINA

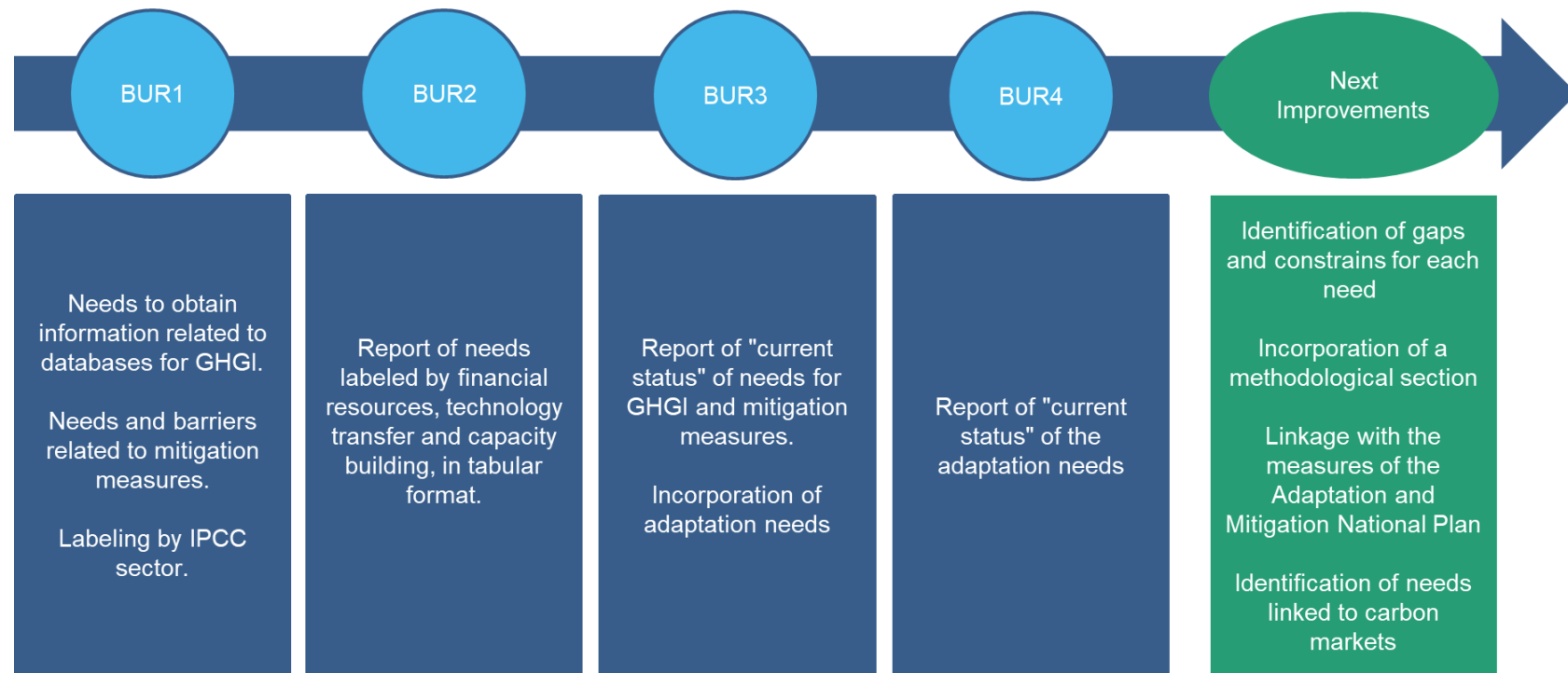
Los **Planes de Acción Sectoriales de Cambio Climático** contienen las **Medidas de Mitigación de la NDC**, agrupadas por sector, estableciendo objetivos e identificando a los organismos responsables de su ejecución.

El Monitoreo de Medidas de Mitigación se realiza a través de **indicadores de seguimiento para conocimiento del grado de avance**.

PLANES NACIONALES PLATAFORMA INTERACTIVA



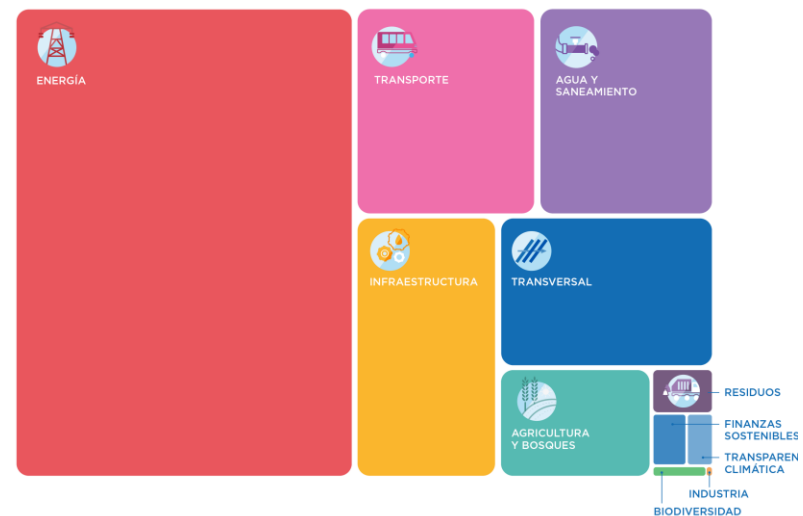
Needs identified



Support received

Taking into consideration annual allowances, that include effective disbursements for climate change related projects, Argentina has received, for the **2019-2020** period, the following climate financing: **USD 475 million**

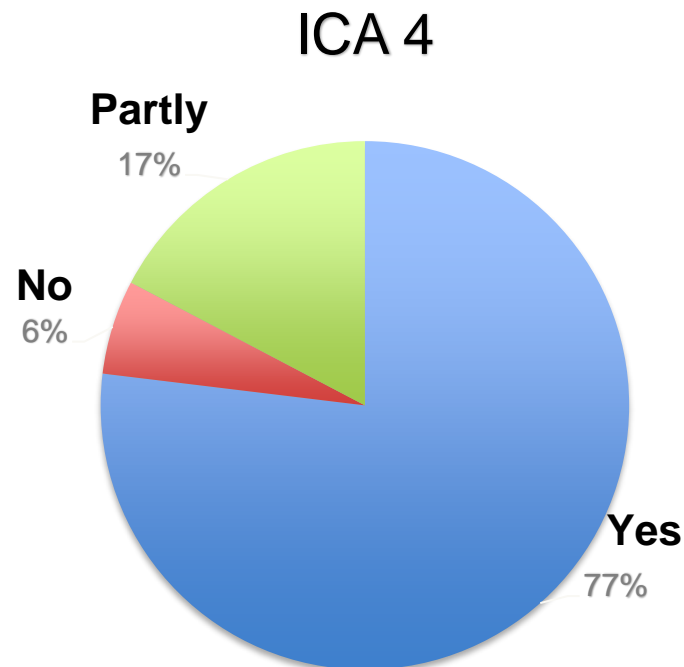
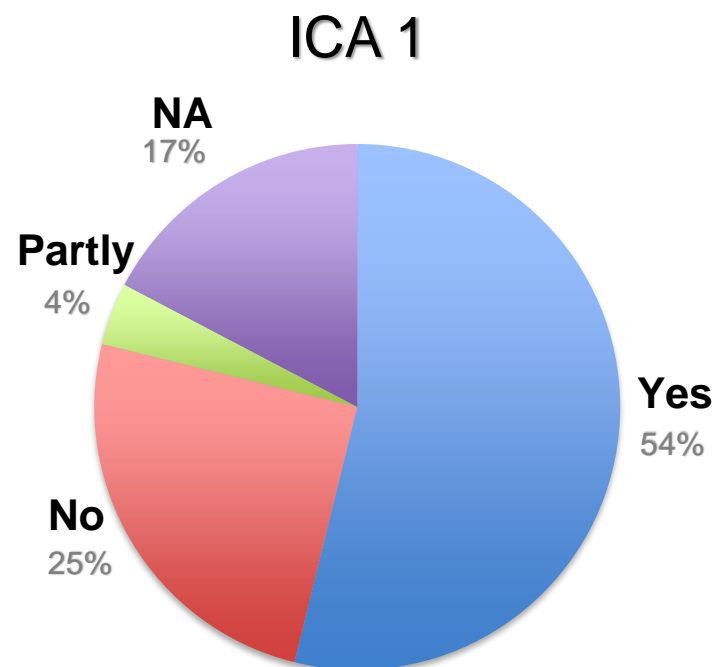
- ✓ 69% corresponded to Mitigation related projects
- ✓ 22% to Adaptation related projects
- ✓ 9% to Transversal projects



ICA Process / BUR's timeline



Extent of the information reported by Argentina in each biennial update report



ETF transition and implementation

Common
reporting tables

Reporting year

Metrics

Improvement
Plan

Mitigation
measures

Projections

Needs

Support
received





Ministerio de Ambiente
y Desarrollo Sostenible
Argentina

primero
la gente