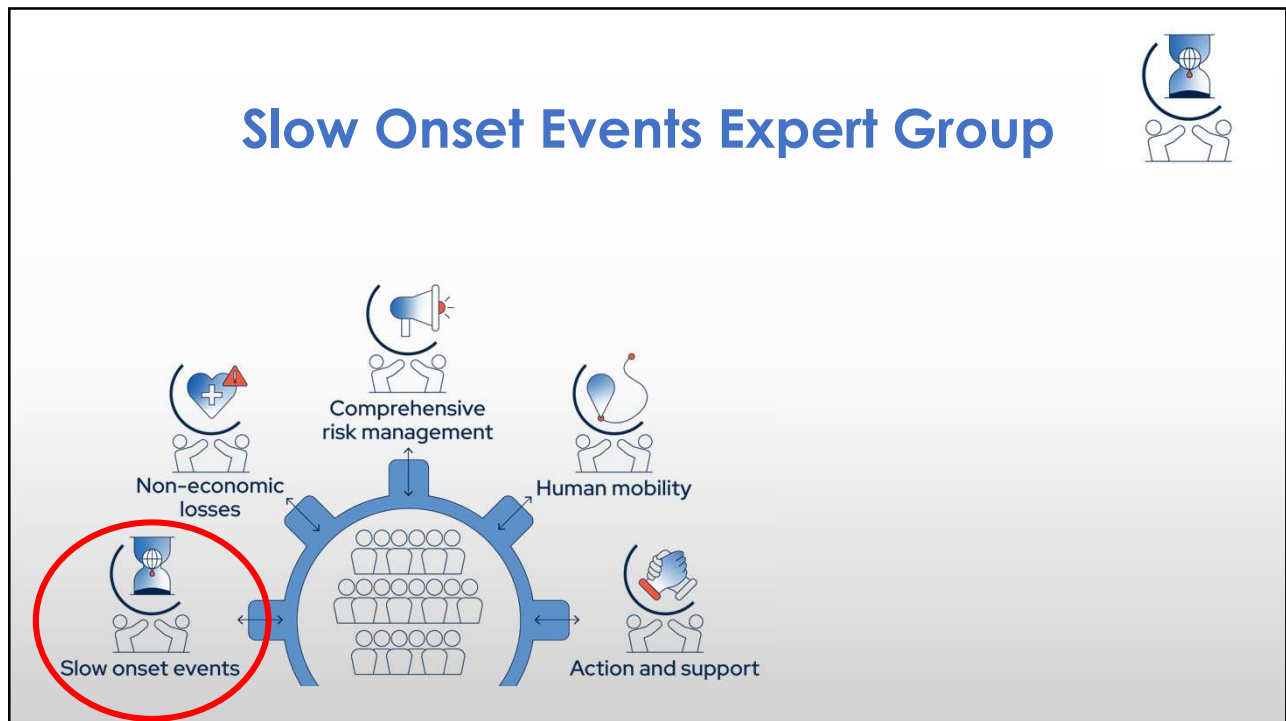


1



2

## Slow Onset Events (SOEs) expert group



The second [PoA](#) (2024–2026) of the [SOEs](#) expert group is focusing on:

- The development of three technical guides on:
  - Sea level rise
  - Desertification
  - Glacial retreat
- Increasing awareness and sharing information on slow onset events at the global, regional and national levels.



3

## SOEs expert group membership

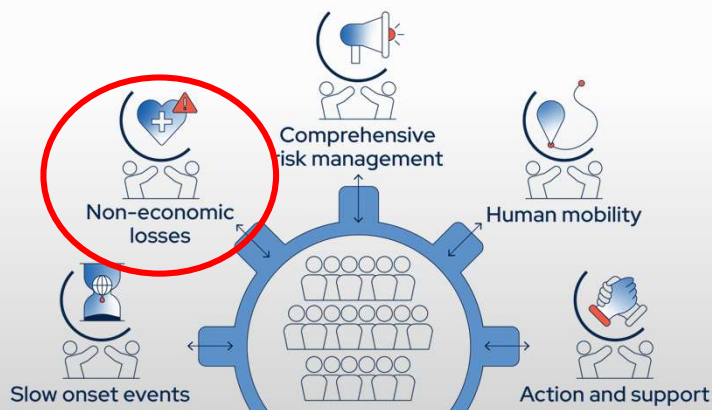


- As of September 2024, the SOEs expert group is composed of [11 members](#).
- The members are engaged in his/her individual capacity, and the expertise covered are:
  - Sustainable development
    - ✓ Development and social justice
  - Disaster risk reduction
    - ✓ Disaster risk and health nexus
  - Science and policy interface
  - Climate and society interaction
  - Sustainable forest management



4

## Non-Economic Losses Expert Group



5

## Non-Economic Losses (NELs) expert group



The rolling [PoA](#) of the [NELs](#) expert group is focusing on:

- Stocktaking relevant data, tools and knowledge on non-economic losses.
- Awareness-raising, outreach and support strategy.
- Enhancing technical guidance and catalyzing support.
- Developing recommendations for the Executive Committee for consideration by Parties.

6

## NELs expert group Membership



- As of September 2024, the NELs expert group is composed of [19 members](#).
- Representatives from the organizations and constituted bodies that comprise the NELs expert group:
  - West African Science Service Centre on Climate Change and Adapted Land Use (WASCAL)
  - UNFCCC Adaptation Committee (AC)
  - UNFCCC Facilitative Working Group of the Local Communities and Indigenous Peoples Platform (LCIPP)
  - UNFCCC Least Developed Countries Expert Group (LEG)
  - Asian Disaster Preparedness Center (ADPC)
  - United Nations Educational, Scientific and Cultural Organization (UNESCO)
  - United Nations Entity for Gender Equality and the Empowerment of Women (UN-Women)
  - UNFCCC Youth Constituency (YOUNGO)
  - Organisation of Eastern Caribbean States (OECS)
- The NELs expert group also includes 6 experts, engaged in his/her individual capacities.



7

## NELs expert group Membership



- Areas of expertise of the group covered are:
 

<ul style="list-style-type: none"> <li>▪ Adaptation</li> <li>▪ Rural development</li> <li>▪ Human mobility, migration, and displacement</li> <li>▪ Risks and vulnerability</li> <li>▪ Gender and women rights</li> <li>▪ Decent work and employment</li> <li>▪ Indigenous Peoples' knowledge</li> <li>▪ Youth</li> </ul>	<ul style="list-style-type: none"> <li>▪ Health</li> <li>▪ Ecosystems, biodiversity, natural resource management</li> <li>▪ Agroclimatology/agrometeorology</li> </ul>
--	--



8

## NELs expert group PoA outputs

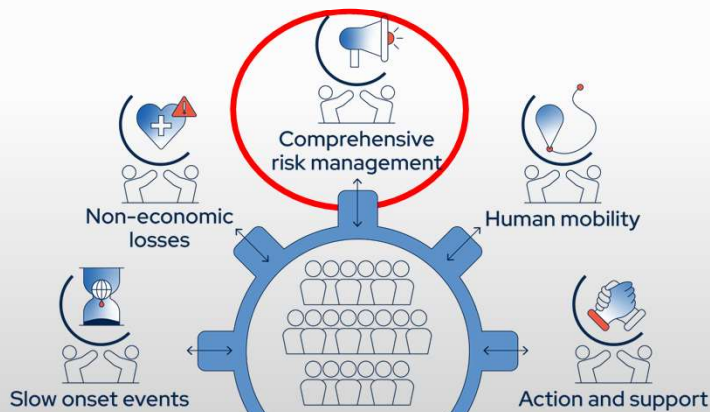


- Under Activity 1:
  - An update to the technical paper on non-economic losses, being finalized, informed by submissions on various approaches (Feb 2024). To be endorsed by WIM ExCom for publishing in time for COP 29 (type A product).
  - An inventory of information sources related to averting, minimising and addressing NELs, based on information collected via submissions in April 2023.
- Under Activity 5:
  - An online database of organizations that expressed interest in working with the NELs expert group.
- Under Activity 7:
  - Technical guide on averting, minimizing and addressing non-economic losses in the context of human mobility, being developed jointly with the TFD. A survey targeting L&D contact points and other focal points being administered to collect relevant information to inform the technical content of the guide.



9

## Technical Expert Group on Comprehensive Risk Management



10

## Technical Expert Group on Comprehensive Risk Management (TEG-CRM)



The [TEG-CRM](#)'s second [PoA](#) (2022–2024) has a broad coverage in terms of activities on application of comprehensive risk management approaches, such as:



Risk-informed planning and implementation, options and solutions.



Climate risk assessment and services.



Humanitarian perspective on climate risk.



Social protection.



Climate and disaster impact monitoring.



11

## TEG-CRM Membership



- As of September 2024, TEG-CRM is composed of [22 members](#).
- Representatives from organizations :
  - United Nations Office for Disaster Risk Reduction (UNDRR)
  - Start network/CARE International UK
  - Red Cross Red Crescent Climate Centre (IFRC)
- TEG-CRM also includes 15 experts, engaged in his/her individual capacities.
- Areas of expertise on CRM approaches that members cover are:
  - Climate science
  - Observation, risk/vulnerability assessment and risk profiling
  - Disaster risk reduction
  - Risk finance, and climate risk insurance
  - Adaptation
  - Humanitarian affairs



12

## TEG-CRM PoA outputs

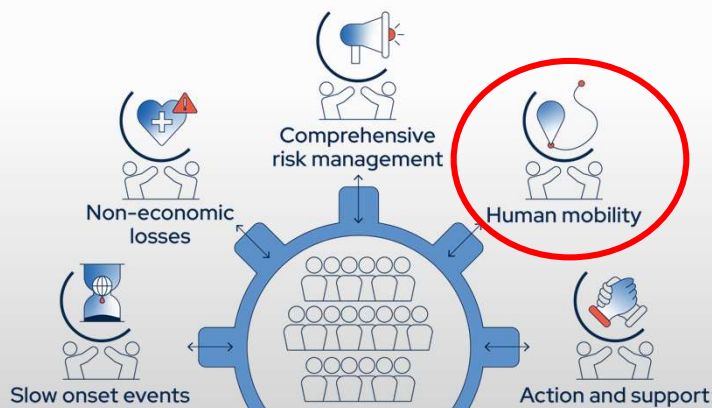


- Compendium vol. 2 under development to be published by WIM ExCom (type A output)
  - Under Activity 5: "Compendium on comprehensive risk management approaches vol.2". ExCom endorsed the outline in Sep 2024. A draft under development, informed by recent case studies submitted across loss and damage workstreams.
- Three publications catalyzed by the TEG-CRM PoA 2 (type B output):
  - Under Activity 1: "Key Findings Related to Loss and Damage from the IPCC AR6 WGII Report on Impacts, Adaptation and Vulnerability".
  - Under Activity 6: "Addressing Loss and Damage: What can we Learn from Countries' National Adaptation Plans?".
  - Under Activity 8: "The Role of Early Warning Early Action in Minimizing Loss and Damage".
- Other knowledge products developed by members of the TEG-CRM:
  - Under Activity 2 & 3: "Technical guidance on application of climate information for comprehensive risk management" and a thought leadership course on "Synergizing Disaster Risk Reduction and Climate Change Adaptation"



13

## Task Force on Displacement (TFD)



14



# Task Force on Displacement (TFD)



The TFD's third [Plan of Action](#) (2022–2024) focuses on:

- Fostering a shared understanding of approaches to averting, minimizing and addressing displacement associated with climate change impacts.
- Supporting Parties with practical user-friendly tools for implementing the recommendations.
- Increasing the visibility and impact of the TFD.



15

## TFD Membership



- As of September 2024, TFD is composed of [14 members](#).
- Representatives from the organizations and constituted bodies that comprise the TFD:
  - International Labour Organization (ILO)
  - United Nations Development Programme (UNDP)
  - United Nations High Commissioner for Refugees (UNHCR)
  - International Organization for Migration (IOM)
  - International Federation of Red Cross and Red Crescent Societies (IFRC)
  - Platform of Disaster Displacement (PDD)
  - Civil society group of the UN Migration network
  - Children and youth constituency of the UNFCCC (YOUNGO)
  - UNFCCC Adaptation Committee
  - UNFCCC Least Developed Countries Expert Group (LEG)



16



## TFD PoA key outputs

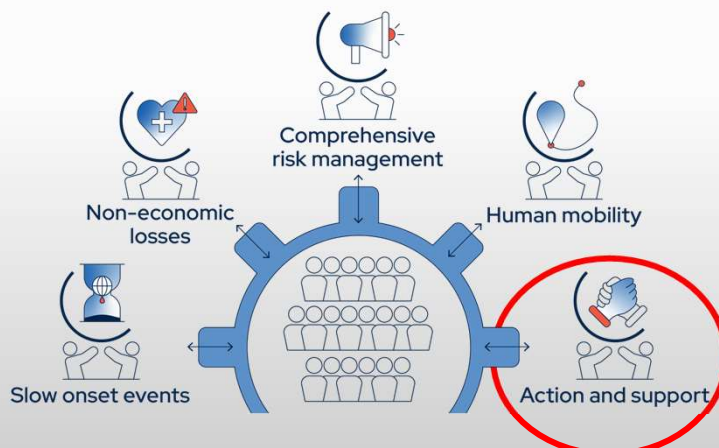


- Under Activity 1: "Technical Consultation of the Task Force on Displacement on the Implementation of its 3rd Plan of Action" held in Geneva, 11 July 2023, convened by IOM and PDD. Another one planned for Sep 2024
- Under Activity 2: Two joint briefings organized
- Under Activity 3: Two capacity building events held in Nairobi and Istanbul
- Under Activity 4: Technical guide on averting, minimizing and addressing non-economic losses in the context of human mobility, under development jointly with the expert group on non-economic losses. The outline endorsed by ExCom in March, and an expert consultation held on 9 Sep.
- Under Activity 5: Technical Guide on Integrating Linkages between Human Mobility and Climate Change into National Climate Change Planning Processes, endorsed by ExCom on 2 July 2024, in a design phase for publication
- Under Activity 6: Technical Guide on Accessing Financial Resources Aiming to Avert, Minimize, and Address the Impacts of Displacement Associated with the Adverse Effects of Climate Change, being finalized. A round of survey held to gather inputs to inform the content
- Under Activity 7 & 8 : A technical session held at the 2024 NAP Expo, TFD contributed to events at the Human mobility pavilion at COP 28



17

## Action and Support Expert Group



18

## Action and Support Expert Group (ASEG)



[ASEG](#) focuses on aspects relating to finance, technology and capacity-building to address loss and damage. The first [Plan of Action](#) focused on,

- Strengthening dialogue with the SCF
- Clarifying how developing country Parties may access funding from the GCF for loss and damage
- Information on available sources of support for loss and damage
- Collaboration with other expert groups to develop and disseminate technical guides
- Collaboration with relevant bodies and organizations under and outside the Convention and the Paris Agreement



19

## ASEG Membership



- To implement the 1<sup>st</sup> PoA, ASEG engaged the following [17 members](#):

- Representatives from the organizations and constituted bodies :
  - Caribbean Community Climate Change Centre (CCCCC)
  - Organisation for Economic Co-operation and Development (OECD)
  - World Bank
  - Environnement et Développement du Tiers-Monde (ENDA)
  - UNFCCC bodies:
    - Climate Technology Centre and Network (CTCN)
    - Standing Committee on Finance (SCF)
    - Technology Executive Committee (TEC)
    - Paris Committee on Capacity-building (PCCB)
- 5 experts served as members in his/her individual capacities.

### Areas of expertise

- Adaptation
- Sustainable development
- Disaster risk reduction
- Insurance
- Social justice
- Finance
- Technology
- Capacity building
- Health



- Membership currently under review by WIM ExCom, and the second Plan of Action to be developed, taking into consideration relevant decisions from CMA 5/COP 28 as well as the evolving loss and damage landscape.

20

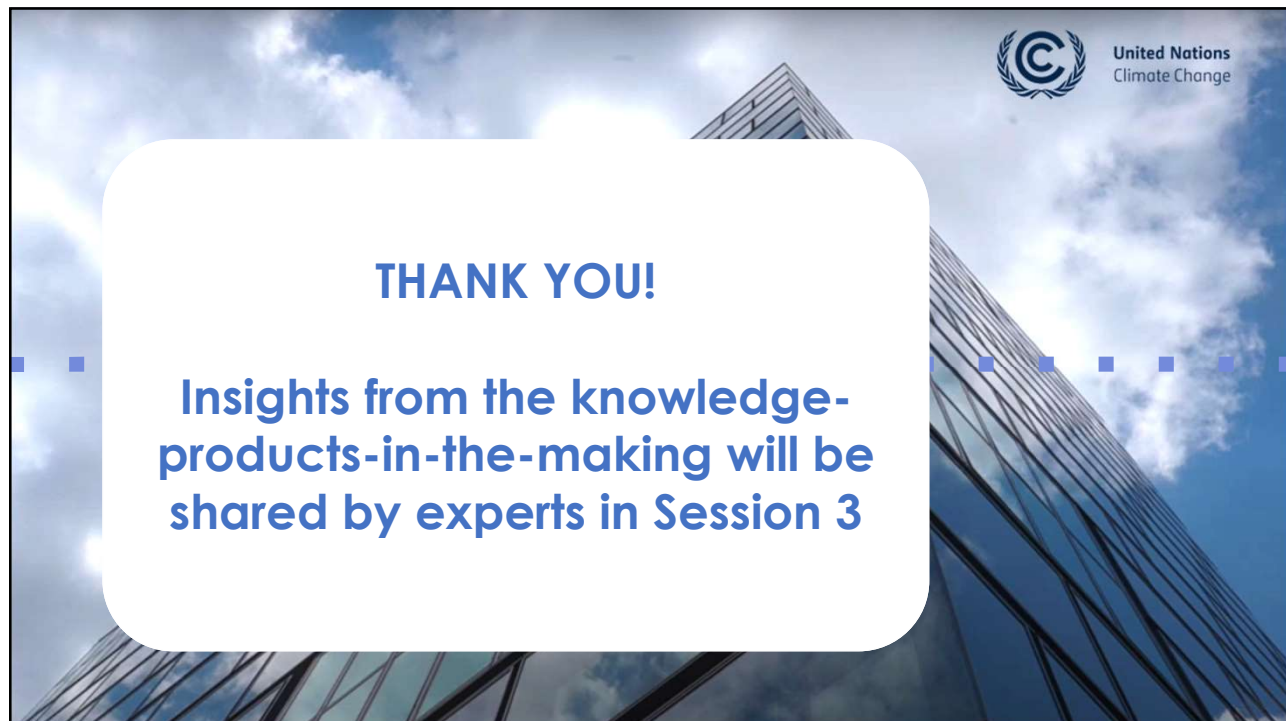
## ASEG outputs



- Paper on case studies of projects funded by the Green Climate Fund (GCF) in relation to the strategic workstreams of the Warsaw International Mechanism, endorsed by ExCom in March 2024, to be published in Sep 2024.
- Annual preparation of input of the WIM ExCom for submission to the SCF to prepare the draft guidance to the operating entities of the Financial Mechanism.
- Submissions to the Paris Committee on Capacity-building:
  - Capacity-building support for adaptation, with a focus on addressing gaps and needs related to formulating and implementing national adaptation plans
  - Provision of input to the booklet on adaptation and resilience-building



21



22