

**A6.4-SBM013-A05**

## Draft Tool

---

### Article 6.4 sustainable development tool

Version 08.0

DRAFT



**United Nations**  
Framework Convention on  
Climate Change

<b>TABLE OF CONTENTS</b>	<b>Page</b>
<b>1. INTRODUCTION .....</b>	<b>4</b>
1.1. Background.....	4
<b>2. SCOPE, APPLICABILITY, AND ENTRY INTO FORCE .....</b>	<b>4</b>
2.1. Scope.....	4
2.2. Applicability .....	4
2.3. Entry into force.....	5
<b>3. GENERAL STEPS FOR SD TOOL IMPLEMENTATION .....</b>	<b>5</b>
<b>4. NORMATIVE REFERENCES .....</b>	<b>10</b>
<b>5. DEFINITIONS .....</b>	<b>10</b>
<b>6. ENVIRONMENTAL AND SOCIAL SAFEGUARDS .....</b>	<b>12</b>
6.1. Environmental and social safeguards principles .....	15
6.2. Environmental safeguards principles and criteria .....	16
6.2.1. <i>Principle 1: Climate and energy</i> .....	16
6.2.2. <i>Principle 2: Air, land and water</i> .....	16
6.2.3. <i>Principle 3: Ecology and natural resources</i> .....	17
6.3. Social safeguards principles/criteria.....	18
6.3.1. <i>Principle 4: Human rights</i> .....	18
6.3.2. <i>Principle 5: Labour</i> .....	19
6.3.3. <i>Principle 6: Health and safety</i> .....	20
6.3.4. <i>Principle 7: Gender equality</i> .....	20
6.3.5. <i>Principle 8: Land acquisition and involuntary resettlement</i> .....	21
6.3.6. <i>Principle 9: Indigenous Peoples</i> .....	21
6.3.7. <i>Principle 10: Corruption</i> .....	23
6.3.8. <i>Principle 11: Cultural heritage</i> .....	23
<b>7. DEMONSTRATING IMPACT TO SUSTAINABLE DEVELOPMENT .....</b>	<b>24</b>
7.1. Consideration of sustainable development priorities/objectives of host party.....	24
7.2. Identification of positive and negative impacts to the 17 Sustainable Development Goals .....	24
7.2.1. Developing activity-level SD indicators .....	25

7.3.	Monitoring description/requirement of activity-level SD indicators .....	28
<b>8.</b>	<b>VALIDATION.....</b>	<b>28</b>
<b>9.</b>	<b>VERIFICATION.....</b>	<b>30</b>
<b>APPENDIX 1.</b>	<b>PRINCIPLE’S GUIDING QUESTIONS FOR THE DO-NO-HARM RISK ASSESSMENT OF THE ENVIRONMENTAL AND SOCIAL SAFEGUARDS PRINCIPLE AND CRITERIA.....</b>	<b>32</b>

# 1. Introduction

## 1.1. Background

1. The Conference of the Parties serving as the meeting of the Parties to the Paris Agreement (CMA), at its third session, adopted the rules, modalities and procedures (RMPs) for the mechanism established by Article 6, paragraph 4, of the Paris Agreement (Article 6.4 mechanism) and requested the Supervisory Body to establish the requirements and processes necessary to operate the mechanism, including those relating to the application of robust, social and environmental safeguards to Article 6.4 activities and/or A6.4 programmes of activities and to develop tools and approaches for assessing and reporting information about how each activity is fostering sustainable development, while acknowledging that the consideration of sustainable development is a national prerogative.
2. The RMPs also refer to the eleventh preambular paragraph of the Paris Agreement (*Acknowledging* that climate change is a common concern of humankind, Parties should, when taking action to address climate change, respect, promote and consider their respective obligations on human rights, the right to health, the rights of Indigenous Peoples, local communities, migrants, children, persons with disabilities and people in vulnerable situations and the right to development, as well as gender equality, empowerment of women and intergenerational equity).
3. The Supervisory Body of the Article 6.4 mechanism, at its Xth meeting (SBM XXX), approved the Article 6.4 sustainable development tool (A6.4 SD tool).

# 2. Scope, applicability, and entry into force

## 2.1. Scope

4. The Article 6.4 sustainable development tool (hereinafter referred to as the A6.4 SD Tool) provides a step-wise approach for activity participants to identify, evaluate, prevent mitigate and monitor potential negative environmental and social impacts/risks and potential positive and negative contributions to the 17 Sustainable Development Goals (SDGs), by an Article 6.4 activity and/or A6.4 programmes of activities (PoA) (hereafter “activity” or “activities” refers, Article 6.4 Activity and/or A6.4 PoA).

## 2.2. Applicability

5. The use of the A6.4 SD tool is mandatory for all proposed Article 6.4 activities to identify, evaluate, and prevent potential risks, adopt risk mitigation measures and demonstrate their impacts on sustainable development. This includes mandatory use for all interested CDM activities to be eligible for transition to the Article 6.4 mechanism. The A6.4 SD tool and the three A6.4 SD tool forms<sup>1</sup> provide:
  - (a) Environmental and social safeguards principles, criteria, and do-no-harm risk assessment requirements and action plans for the mitigation of risks and impacts;

---

<sup>1</sup> Three forms include: the A6.4 Environmental and Social Safeguard Risk Assessment Form, the A6.4 Environmental and Social Management Plan Form and the A6.4 Sustainable Development Tool Form.

- (b) Guidance for identifying the sustainable development impact of proposed Article 6.4 mechanism activities and CDM activities, transitioned to the Article 6.4 mechanism;
- (c) Steps for determining SDGs<sup>2</sup> impacted by the proposed activity, taking into consideration the host countries' sustainable development objectives;
- (d) Principles for establishing sustainable development monitoring indicators based on the SDGs and their targets;
- (e) Requirements for DOEs to be considered under the validation and verification processes.

### **2.3. Entry into force**

- 6. Version 01.0 of the A.6.4 SD tool enters into force on [DD Month YYYY]. [This document shall be reviewed every xx year]

## **3. General steps for SD Tool implementation**

- 7. The A6.4 SD tool requires the activity participants to identify and evaluate potential risks of proposed activities. Environmental and social safeguards principles and criteria help activity participants to identify, evaluate, prevent and mitigate unintended potential negative environmental and social impacts and risks produced by an activity in its environment during implementation and operation. All activity participants shall adopt mitigation strategies to avoid. Where complete avoidance of risk is not possible and activity implementation is nonetheless permitted, activity participants shall minimize identified risks. Where complete avoidance of risk is not possible, activity participants shall provide evidence that the activities are consistent with safeguarding principles, criteria and host Party laws or regulations[, including agreements that meet the Host Party's obligations under international law]. In addition, activity participants are encouraged to also apply standards, industry best practices, and/or their own voluntary policies identified as relevant to the environmental and social safeguards principle, and are [required][encouraged] to do so in the absence of host Party regulations.
- 8. In addition, activity participants are [encouraged] [required] to apply relevant standards, industry best practices and/or their own voluntary policies in addition to or in absence of host party laws and regulations.
- 9. Activity participants are also required to assess, demonstrate and monitor an activity's impact to sustainable development.
- 10. Sustainable development contributions by the proposed activities shall be confirmed by the host the "Host Party approval" as per Article 6.4 activity cycle procedure. To further inform such host Party considerations and the activity participants' transparent identification and monitoring of the activity's SD impacts, activity participants are required to demonstrate how the proposed activities contribute to sustainable development by applying the A6.4 SD Tool.

---

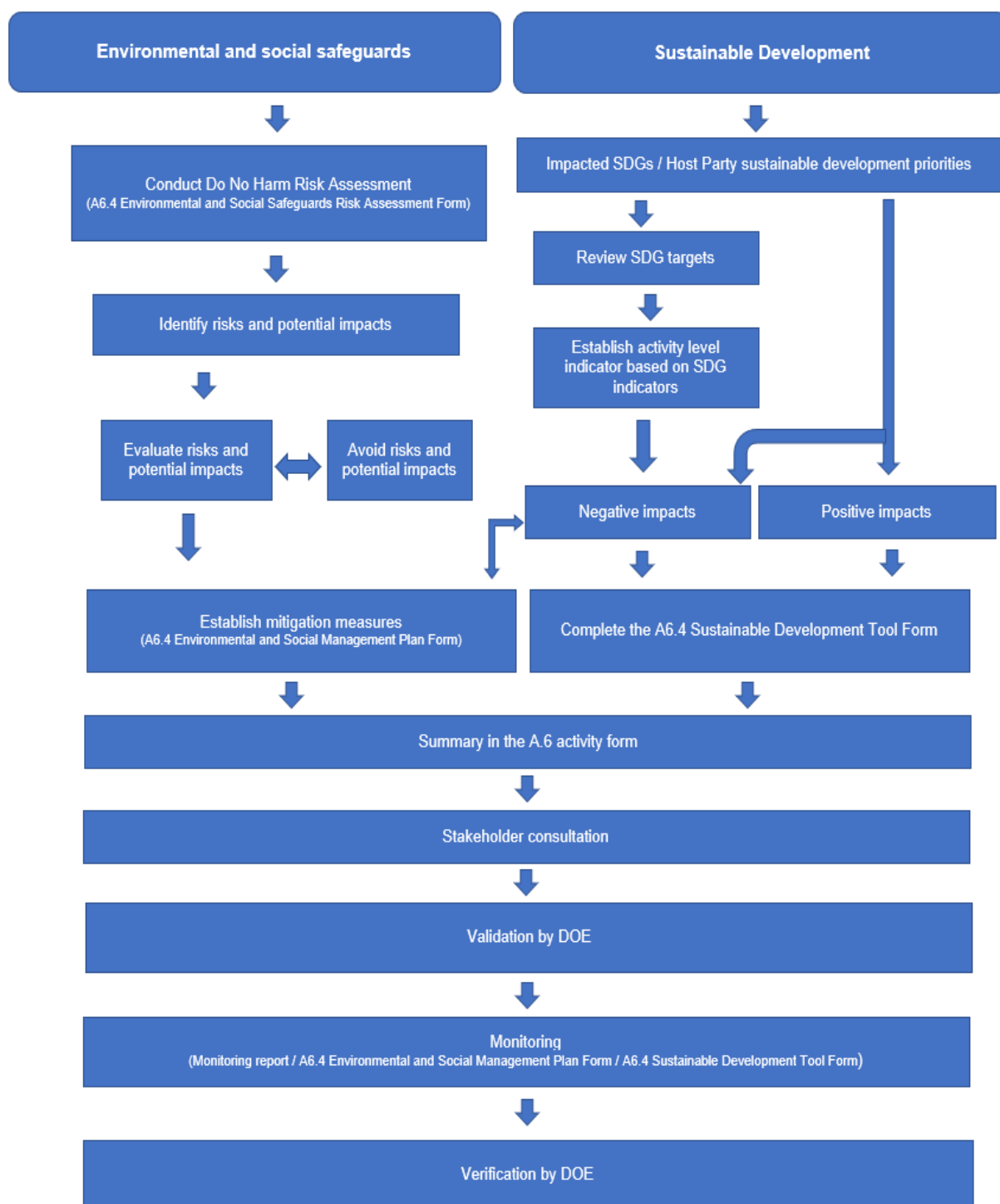
<sup>2</sup> Available at: <https://www.un.org/sustainabledevelopment/blog/2015/09/historic-new-sustainable-development-agenda-unanimously-adopted-by-193-un-members/>

11. This tool is divided into three sections:
- (a) Environmental and social safeguards<sup>3</sup>: This section Contains safeguards principles and criteria that form the basis for activity participant to identify, evaluate, prevent and mitigate potential negative environmental and social impacts and risks that may arise during the implementation of an activity. The results of the assessment of the environmental and social safeguards shall be reflected in:
    - (i) A6.4 Environmental and Social Safeguards Risk Assessment Form; and
    - (ii) A6.4 Environmental and Social Management Plan Form.
  - (b) Sustainable development Impact: This section focuses on the assessment, demonstration, and monitoring of an activity's impact to sustainable development. The evaluation of sustainable development impact shall be reflected in A6.4 Sustainable Development Tool Form;
  - (c) Validation and verification: This section provides additional requirements to the VVS-P/PoA to be considered by the DOEs during the validation and verification stages.
12. Figure 1 provides the general overview of application of this Tool. Figure 2 summarizes the do-no-harm risk assessment to be completed in A6.4 Environmental and Social Safeguards Risk Assessment Form and preparation of Environmental and Social Management Plan, as presented in paragraph 33 below. Figure 3 describes steps for demonstrating impact to SDGs.

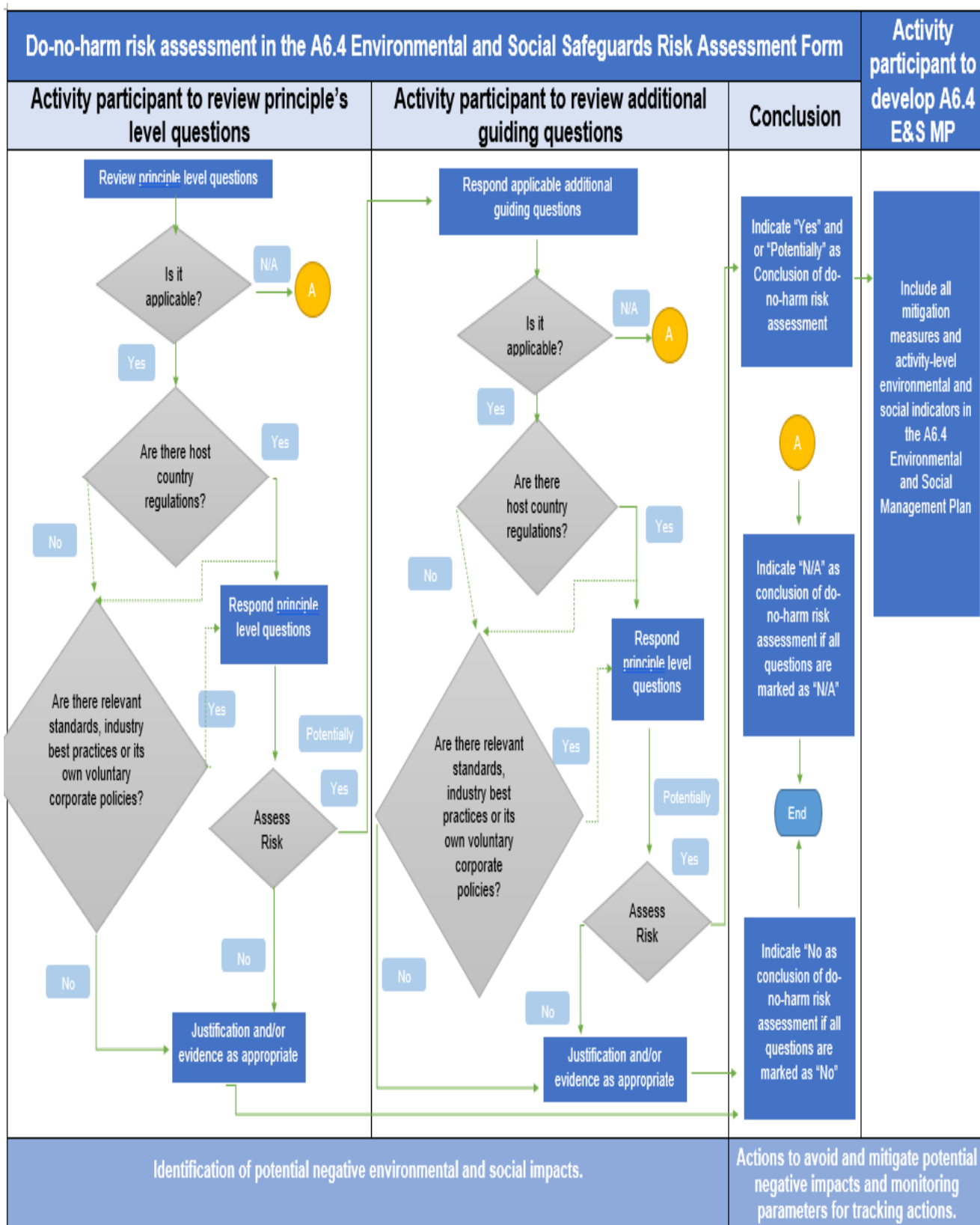
---

<sup>3</sup> Environmental and social safeguards which are commonly observed in other international financial institutions, other UN agencies and voluntary carbon market systems.

**Figure 1. Article 6.4 sustainable development tool flow chart**

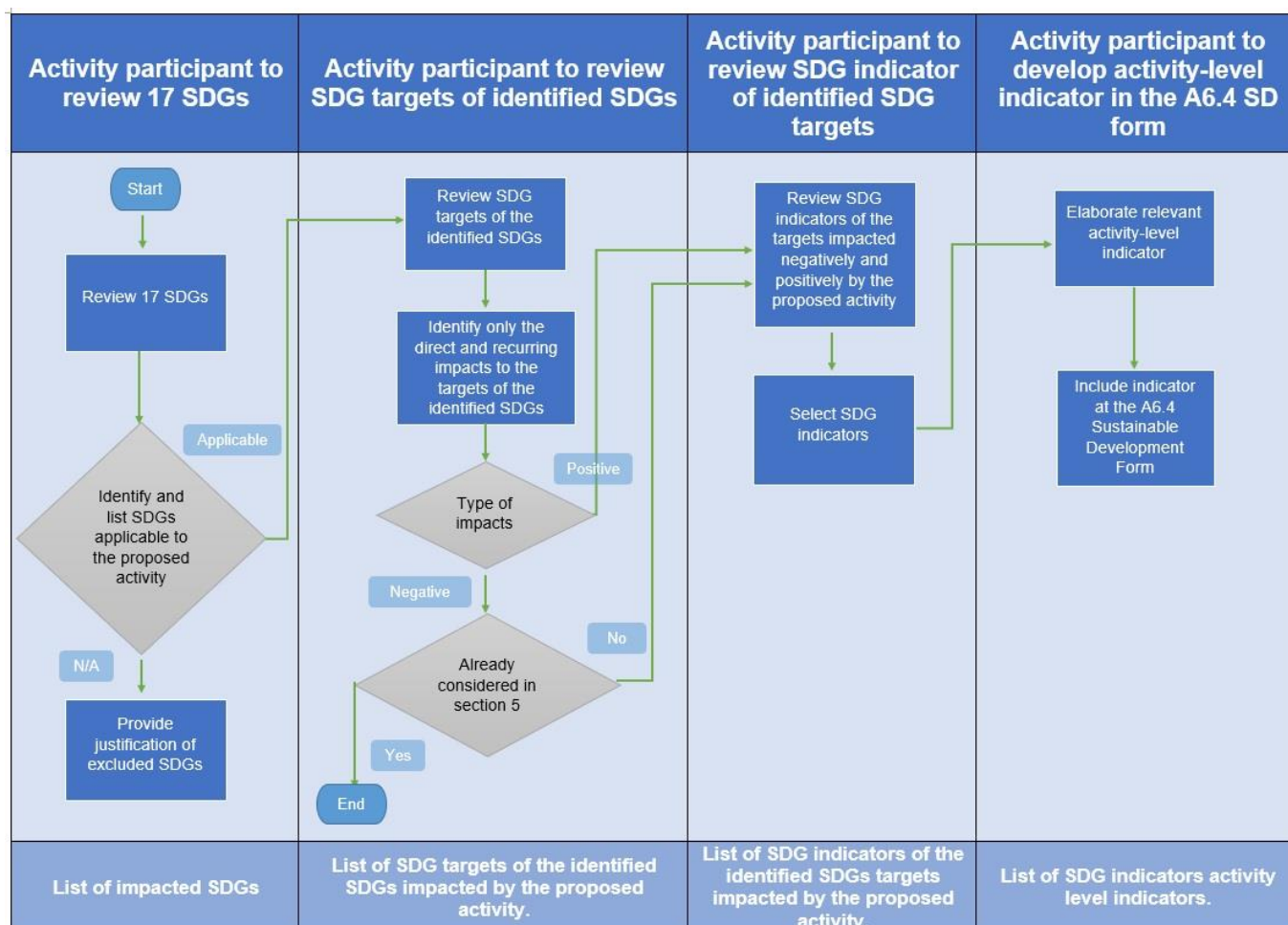


**Figure 2. Do-No-Harm Risk Assessment flow chart**





**Figure 3. Diagram for demonstrating impact to SDGs**



13. These three A6.4 SD tool forms (referred to in paragraph 11) shall be shared during the local stakeholder consultation, in accordance with host Party rules and/or Article 6.4 mechanism activity cycle procedures and section 6.9 and Appendix 2 of Article 6.4 mechanism activity standards. When issues are raised from local stakeholder consultation, activity participants are required to revise/update the A6.4 Environmental and Social Safeguards Risk Assessment Form, the A6.4 Environmental and Social Management Plan Form and the A6.4 Sustainable Development Tool Form and shall submit them to a DOE for validation.
14. The validated A6.4 Environmental and Social Safeguards Risk Assessment Form, the A6.4 Environmental and Social Management Plan and A6.4 the Sustainable Development Tool Form will be part of the registered activity documentation and will be used for ex-post monitoring during the crediting period and shall be verified by a DOE during each request for issuance of Article 6 paragraph 4, emission reductions (A6.4 ERs).
15. Stakeholders may submit any issue and comments related to compliance of this tool through the local stakeholder consultation and global stakeholder consultation prior to the registration of an activity as per Article 6.4 activity standard.

16. After the registration of the activity under the Article 6.4 mechanism, the activity participants shall create and maintain until the end of the valid crediting period of the project a window for stakeholders to comment on compliance of this tool as per the continuous engagement of stakeholders, as defined in Article 6.4 activity standard, and appeal and grievance processes under the Article 6.4 mechanism. Activity participants, DOEs and the secretariat will make their documents publicly available in their respective activity view page hosted on the UNFCCC website as per Article 6.4 activity cycle procedure.

## 4. Normative references

17. The following referenced documents are indispensable for the application of this tool:
- (a) United Nations Global indicator framework for the Sustainable Development Goals and targets of the 2030 Agenda for Sustainable Development (17 SDGs);<sup>4</sup>
  - (b) Article 6.4 mechanism activity standard for activities (AS-P)
  - (c) Article 6.4 mechanism activity standard for programmes of activities (AS-PoA)
  - (d) Article 6.4 mechanism validation and verification standard for activities (VVS-P)
  - (e) Article 6.4 mechanism validation and verification standard for programmes of activities (VVS-PoA)
  - (f) Article 6.4 mechanism activity cycle procedure for activities (ACP-P)
  - (g) Article 6.4 mechanism activity cycle procedure for programmes of activities (ACP-PoA)
  - (h) Appeal and grievance processes under the Article 6.4 mechanism.

## 5. Definitions

18. In addition to the definitions found in the “Glossary: Article 6.4 mechanism terms”, the following terms are applicable in this procedure. Further, references are provided throughout the Tool that provide information on specific topics/principles/criteria that are defined in each section:
- (a) Activity-level environmental and social indicators<sup>5</sup>: activity specific indicators identified during “do-no-harm risk assessment” that are required to be defined in “A6.4 Environmental and Social Management Plan”. These indicators help ensure that the activities do not cause harm for example to the environment, communities Indigenous Peoples, activity workers, etc.

---

<sup>4</sup> Available at:  
[https://unstats.un.org/sdgs/indicators/Global%20Indicator%20Framework%20after%202023%20refinement\\_Eng.pdf](https://unstats.un.org/sdgs/indicators/Global%20Indicator%20Framework%20after%202023%20refinement_Eng.pdf).

<sup>5</sup> Examples of activity-level environmental and social indicators for an activity that requires water consumption may include the activity-level indicator of the volume of water consumed per month/day/time period in order to ensure that water consumption does not exceed the limit indicated in the water use licence issued by the host party's authority

- (b) Activity-level SD indicators<sup>6</sup>: these are activity-specific indicators [consistent with] [that represent the Art 6.4 activity contributions to] [aligned with] the UN Sustainable Development Goals, used to monitor the Sustainable Development (SD) contribution of an Article 6.4 activity, and sustainable development objectives, as defined by a host party, that are required to be specified in the "A6.4 Sustainable Development form";
- (c) Direct impact: an impact which is based on direct contribution/interaction by an activity with an environmental, social or economic component during the implementation and operation and [decommissioning] [dismantling], if applicable
- (d) Generic assessments: conclusions provided by the activity participants in regard to the proposed activity alignment with relevant standards, industry best practices or their own voluntary policies applicable to the proposed activity for transparency and compliance purposes
- (e) Host Party laws and regulations: regulatory requirements such as national or subnational laws, legislation and regulations that are applicable to the proposed activity.
- (f) Host Party laws and regulations assessment: assessment and conclusion provided by activity participants regarding the proposed activity alignment with host Party laws and regulations
- (g) Stakeholders: the public, including individuals, groups or communities, marginalized and disadvantaged groups, women, children, older persons, persons with disabilities, minorities, Indigenous Peoples<sup>7</sup> or any other any person who may be affected or is likely to be affected, by the proposed Article 6.4 activity or PoA, or actions leading to the implementation of such an activity
- (h) Sustainable Development Goals (SDGs): a set of 17 interlinked global goals designed to be a blueprint to achieve a better and more sustainable future for all. They were established by the United Nations in 2015 as part of the 2030 Agenda for Sustainable Development. The 17 SDGs build upon the successes of the Millennium Development Goals while incorporating new areas such as climate change, economic inequality, innovation, sustainable consumption, peace and justice, among other priorities

---

<sup>6</sup> Examples of activity-level SD indicators for a cookstove distribution activity may include:

- (a) The number of improved cookstoves (ICS) distributed under the activity, serving as an indicator for providing basic service access to households under SDG 1, target 1.4;
- (b) The percentage of users reporting a reduction in smoke/particulate matter after shifting to ICS within the activity, addressing SDG 3, target 3.9;
- (c) The percentage of users reporting time savings due to reduced fuel consumption or cooking time within the activity, related to SDG 5 and its target 5.4; and/or
- (d) The average percentage of fuel savings reported by users within the activity, pertaining to SDG 12 and its target 12.2.

<sup>7</sup> <https://www.un.org/development/desa/indigenouspeoples/about-us.html#:~:text=%E2%80%9CIndigenous%20communities%2C%20peoples%20and%20nations%20are%20those%20which%2C%20having,territories%2C%20or%20parts%20of%20them.>

- (i) Sustainable development objectives of a host Party: the specific goals, targets, indicators, and priorities that a country sets to achieve sustainable development within its borders. These objectives are aligned with the broader principles of sustainability, which aim to balance economic growth, social inclusion, and environmental protection. They are typically articulated in national development plans, policies, and strategies and are designed to address the unique challenges and opportunities within the country;
- (j) A6.4 Environmental and Social Safeguards Risk Assessment Form: a do-no-harm risk assessment form that identifies environmental and/or social risk caused by a proposed activity;
- (k) A6.4 Environmental and Social Management Plan: a management tool that details the set of mitigation measures and monitoring to be taken during its entire crediting period to avoid and/or, where avoidance is not possible and activity implementation is nonetheless permitted, to mitigate environmental and social impacts, prevent them, and reduce them to acceptable levels as per safeguarding principles, criteria and host Party laws or regulations[, including agreements that meet the Host Party's obligations under international law]. In addition, activity participants are encouraged to also apply standards, industry best practices, and/or their own voluntary policies identified as relevant to the environmental and social safeguards principle, and are [required][encouraged] to do so in the absence of host party regulations.

## 6. Environmental and social safeguards

- 19. The implementation and operation of an activity may cause negative social and environmental impacts. Environmental and social safeguards principles and criteria help activity participants to identify, evaluate, prevent, mitigate and monitor potential negative environmental and social impacts and risks produced by an activity in its environment during implementation and operation.
- 20. In addition to the requirements of the Validation and Verification Standard, Activity Cycle Procedure and Activity Standard listed in section 3 related to compliance with legal and regulatory requirements of the host Party, activity participants are required to document in the [activity design form] [project design document (PDD)] that their proposed activities do not cause any environmental and/or social harm.
- 21. This section provides the process for activity participants to identify, evaluate, prevent, mitigate and monitor potential negative social and environmental impacts and risks, which may be caused by their activity, against the environmental and social safeguard principles/criteria. The goal is to ensure that while the activity contributes to reducing greenhouse gas emissions, it does not inadvertently cause harm to local communities, Indigenous Peoples, marginalised groups, ecosystems, or economies. This assessment aligns with the broader principles of sustainable development and safeguards the well-being of all stakeholders involved:
  - (a) The activity participants shall conduct a do-no-harm risk assessment to identify possible negative environmental and social impacts and risks from the implementation and operation and [decommissioning] [dismantling], if applicable, of the activity against eleven principles under the environmental safeguards and the social safeguards defined in section 5.1 and 5.2 below using the A6.4 Environmental and Social safeguards Risk Assessment Form by answering the

principle level question(s) under guiding question tables in respect of each principles and criterion contained in Appendix 1. These eleven principles are based on principles observed from other international financial institutions, other UN agencies and voluntary and independent carbon market systems;<sup>8, 9, 10, 11, 12, 13, 14, 15</sup>

- (b) If activity participants identify that its activity has an impact on principles under the environmental and social safeguards (by indicating Yes or Potentially as per Table 1), the activity participants shall conduct further assessment against the Safeguarding Principles and Criteria, including to describe the nature and extent of the risk. The assessment shall summarize any such regulation(s), their applicability to the activity, relevance to the given principle, and the extent to which the risk is mitigated through compliance with the domestic regulation. If host Party does not have laws and regulations for one or more of the eleven principles, the activity participants are encouraged to also apply standards, industry best practices, and/or their own voluntary policies identified as relevant to the environmental and social safeguards principle, [that are identified by an activity in step (a) and (b) above using the A6.4 Environmental and Social Safeguards Risk Assessment Form and any further guidance to be developed by the Supervisory Body, including for the activity participant and DOE to:
- (i) Compare the activity scenario to the environmental and social baseline<sup>16</sup>;
  - (ii) Assess the activity's potential risks based on each of the safeguard principles and criteria defined in the section 5.2 and 5.3 below;
  - (iii) Estimate the likelihood of risk occurrence or indicate its non-applicability based on possible responses classified in Table 1 below.

---

<sup>8</sup> Gold Standard (2023) Safeguard Principles & Requirements. Available at: [https://globalgoals.goldstandard.org/standards/103\\_V2.0\\_TC\\_PAR\\_Safeguarding-Principles-Requirements.pdf](https://globalgoals.goldstandard.org/standards/103_V2.0_TC_PAR_Safeguarding-Principles-Requirements.pdf)

<sup>9</sup> GCF (2023). Environmental and social safeguards. <https://www.greenclimate.fund/activity/sustainability-inclusion/ess>

<sup>10</sup> UNEP (2020). UNEP environmental, social and sustainability framework. Available at: <https://www.unep.org/resources/report/un-environments-environmental-social-and-economic-sustainability-framework>

<sup>11</sup> World Bank (2016). Environmental and Social Framework (ESF). Available at: <https://www.worldbank.org/en/activity-operations/environmental-and-social-policies>

<sup>12</sup> FAO (2022). Framework for Environmental and Social Management. Available at: <https://www.fao.org/3/cb9870en/cb9870en.pdf>

<sup>13</sup> GCC (2022). Environment and Social Safeguards Standard. Available at: [https://www.globalcarboncouncil.com/wp-content/uploads/2022/09/Environment-and-Social-Safeguards-Standard.V3.0-1\\_.pdf](https://www.globalcarboncouncil.com/wp-content/uploads/2022/09/Environment-and-Social-Safeguards-Standard.V3.0-1_.pdf)

<sup>14</sup> IADB (2020). Environmental and Social Policy Framework. Available at: <https://blogs.iadb.org/sostenibilidad/en/espf-environmental-and-social-policy-framework-in-a-nutshell/>

<sup>15</sup> WWF (n.d.). Environmental and Social Safeguards (ESS). Available at: <http://assets.worldwildlife.org/publications/844/files/original/SafeguardsonepagerFINAL.pdf>

<sup>16</sup> Environmental and social conditions in the absence of the proposed activity.

**Table 1. Possible responses in the do-no-harm risk assessment for principle-level questions and additional guiding questions**

Response	Description	Guidance
<b>Yes</b>	If factors contributing to potential negative impacts are present for certain principles/criterion or if the activity, during its implementation, operation and [decommissioning] [dismantling] if applicable, fails to meet the host party regulations, select “yes”.	All factors contributing to potential negative impacts which are currently present shall be identified in the A6.4 environmental and social safeguards risk assessment form, mitigated and monitored through measures described by the activity participant in the A6.4 Environmental and Social Management Monitoring Plan Form. In addition to host party laws or regulations[, including agreements that meet the Host Party’s obligations under international law], activity participants are [encouraged] [required] to standards, industry best practices, and/or their own voluntary policies identified as relevant to the environmental and social safeguards principle.
<b>Potentially</b>	This means that the risk or expected impact may be relevant during its implementation, operation and decommissioning if applicable, but is not necessarily relevant now and/or may never arise.	The activity participants may justify with evidence why the given principle/criterion is currently satisfied and does not require any remedial measures at the time of assessment. The activity participants shall update information on any ‘potentially’ risk for each monitoring report.
<b>No</b>	This means that the risk or expected issue is not relevant to the activity.	Justification shall be provided to support this conclusion. The assessment of any such risks shall be undertaken, and an updated A6.4 Environmental and Social Safeguards Risk Assessment Form submitted, with a request for approval of post-registration change.
<b>NA</b>	This means that the question is not relevant to the activity and its potential impact.	Activity participants are required to justify exclusion of any principles.

- (c) The respective additional guiding questions are defined under each eleven principles except “Principle 1: Climate and energy” and “Principle 10: Corruption”. If an answer for the principle’s level question is either “Yes” or “Potentially”, the

activity participants are required to go to the respective additional guiding questions.

- (d) Based on the outcome of the do no harm risk assessment, the activity participants shall develop A6.4 Environmental and Social Management Plan in order to avoid, where complete avoidance of risk is not possible, mitigate identified /potential negative impacts and risks. It will define and provide:
- (i) Actions to avoid and mitigate potential negative environmental and social impacts and risks assessed as Yes or Potentially as per Table 1 in the do-no-harm risk assessment process;
  - (ii) Monitoring parameters for tracking actions and acceptance criteria that can be tracked over activity crediting periods, and with estimates of the resources and responsibilities for implementation, to demonstrate that the impacts and risks do not cause harm to the environment or society;
  - (iii) Indicators that can be used to monitor environmental and social aspects, which may be quantitative and/or qualitative in nature;
  - (iv) Safeguard communication channel maintained by activity participants to offer stakeholders an effective avenue for expressing concerns and achieving remedies and promote a mutually constructive relationship during the activity crediting period. Such process shall be established as part of the process for continuous engagement of local stakeholders in accordance with the “Article 6.4 activity standard for projects” or the “Article 6.4 activity standard for programmes of activities”;
- (e) Activity participants are required to propose measures and actions to mitigate identified/potential negative impacts, including in accordance with any relevant host party regulations applicable to the proposed activity;

## 6.1. Environmental and social safeguards principles

22. The environmental and social safeguards principles are shown in Table 2 below. The definition of each principle and relevant criteria are introduced in section 5.2 below.

**Table 2. Environmental and social safeguards principles**

<b>Safeguard principles</b>		
<b>Environmental</b>	Principle 1	Climate and Energy
	Principle 2	Air, land and water
	Principle 3	Ecology and natural resources
<b>Social</b>	Principle 4	Human rights
	Principle 5	Labour
	Principle 6	Health and safety
	Principle 7	Gender equality
	Principle 8	Land acquisition and involuntary resettlement
	Principle 9	Indigenous Peoples
	Principle 10	Corruption

Safeguard principles		
	Principle 11	Cultural heritage

## 6.2. Environmental safeguards principles and criteria

### 6.2.1. Principle 1: Climate and energy

23. The proposed activity shall not increase greenhouse gas (GHG) emissions over the GHG baseline scenario, consistent with the applied mechanism methodology.
24. Activities will ensure to affect the availability and reliability of the energy supply to other users.<sup>17</sup>

### 6.2.2. Principle 2: Air, land and water

25. The proposed activity ensure to avoid releasing pollutants into the air, land or water, including hazardous and/or non-hazardous pollutants in the solid, liquid or gaseous phases<sup>18</sup>. This applies to the release of pollutants due to routine, non-routine, and accidental circumstances, as well as historical pollutants<sup>19</sup> that the activity participant has a legal responsibility to mitigate.

#### **Principle 2 (Air, land and water) criteria:**

#### **P2.2 Land<sup>20</sup>**

26. P2.2.1: [A6.4 activities involving carbon dioxide removal methods that entail the release or discharge of materials onto or into land shall take appropriate measures to control soil contamination risks.]

#### **P2.3: Water**

27. P2.3.1: The activity participants shall ensure the sustainable and efficient use of water resources to avoid negative-impacts on water resources and water-related ecosystems, including mountains, coasts, oceans, forests, wetlands, rivers, aquifers and lakes.
28. P2.3.3: When the proposed activity is a potentially significant consumer of water, the activity participants shall adopt measures<sup>21</sup> for improving efficiency in its consumption of water that avoid or reduce water usage so that the activity's water consumption does not have significant negative impacts on people and biodiversity in terms of availability,

<sup>17</sup> Including, for example, curtailment and/or diversion of renewable energy supply away from users and into mitigation activities.

<sup>18</sup> Pollution may include: thermal discharge to water, emissions of short-lived and long-lived climate pollutants, plastics, biomedical waste, nuisance odours, noise, vibration, radiation, electromagnetic energy, excessive water consumption and water discharge, and the creation of potential visual impacts, including light pollution

<sup>19</sup> Historical pollution refers to any historical level of effect into air, soil and water not consistent with, or exceeding, what is legally permitted in respect of the site where the proposed activity will take place.

<sup>20</sup> Land considers land, soil and subsoil and surfaces.

<sup>21</sup> These measures may include, but are not limited to, the use of additional, technically and economically feasible water conservation measures, the use of alternative water supplies, the reuse of water or evaluation of alternative activity locations and relocation, as appropriate.



accessibility, reliability and quality as the same level to the environmental and social baseline.

### 6.2.3. Principle 3: Ecology and natural resources

29. The Activity participant ensure to avoid adverse direct, indirect and cumulative<sup>22</sup> activity-related impacts on habitats and the biodiversity they support. Activity participant shall also mitigate threats to biodiversity, for example, habitat loss, degradation and fragmentation, invasive alien species, overexploitation, hydrological changes, nutrient-loading, pollution and incidental take, as well as projected climate change impacts.

#### **Principle 3 (Ecology and natural resources) criteria:**

##### **P3.1 Natural resources**

30. P3.1.1: The activity participants shall adopt a precautionary approach<sup>23</sup> to natural resource conservation, including soil, minerals and other depletable natural resources, and avoid negative environmental impacts throughout the implementation and operation and decommissioning, if applicable-

##### **P3.2 Biodiversity**

31. P3.2.1: The activity participants shall ensure ecosystem functions are maintained to secure the benefits of ecosystem services.
32. P3.2.2: The activity participants shall protect, and conserve terrestrial, freshwater, coastal and marine biodiversity.
33. P3.2.3: The activity shall maintain or enhance biodiversity and ecosystem functionality within the activity boundary.
34. P3.2.4: The activity shall not lead to the reduction/negative impact on any population of any recognized endangered, vulnerable or critically endangered species.<sup>24</sup>
35. P3.2.5: Habitats of endangered species shall be specifically identified and managed to protect or enhance them.
36. P 3.2.6: The activity shall not introduce any alien species<sup>25</sup> into new environments. The activity participants shall implement measures to avoid the potential for accidental or unintended introductions alien species, including the transportation of substrates and vectors (such as soil, ballast and plant materials) that may harbour alien species.

---

<sup>22</sup> Cumulative impacts: Impacts that result from incremental changes caused by other part, present or reasonably foreseeable action together with the project.

<sup>23</sup> The objective of precautionary approach is prevention rather than remediation and a precautionary approach is an approach to uncertainty and provides for precautionary actions to avoid serious or irreversible environmental harm in advance of scientific certainty of such harm.

<sup>24</sup> As per the International Union for Conservation of Nature (IUCN) Red, there is listed Red List of Threatened Species of Threatened Species.

<sup>25</sup> A species occurring in an area outside of its historically known natural range as a result of intentional or accidental dispersal by human activities (also known as an exotic or introduced species). Source: [UNEP-WCMC](#)

37. P3.2.7: Where alien species are already established in the country or region of the proposed activity, the activity participants shall exercise diligence and take preventive steps to ensure they are not spreading them into areas in which they have not already been established.

### **P3.3 Critical habitats<sup>26</sup>**

38. P3.3.1: An activity that potentially impacts habitats identified as critical habitats shall be implemented only when it meets the following three prerequisites:
- (a) The risk of the activity negatively impacting the catchment in the project area and risks impacting activity success shall be assessed and addressed to ensure its ongoing, long-term viability and impact on surrounding High Conservation Value<sup>27</sup> and ecological assets;
  - (b) There are no measurable negative impacts on the criteria or biodiversity values for which the critical habitat was designated, and on the ecological processes supporting those biodiversity values; and
  - (c) A robust, appropriately designed, and long-term habitats and biodiversity action plan is in place to achieve net gains in those biodiversity values for which the critical habitat was designated as per host party regulation.

## **6.3. Social safeguards principles/criteria**

### **6.3.1. Principle 4: Human rights**

39. Human rights constitute an overarching legally binding framework that informs and guides all environmental and social safeguards. These rights, enshrined in national laws and/or international [treaties][laws] such as the Universal Declaration of Human Rights<sup>28</sup>, establish fundamental standards to ensure dignity, equality, and justice for all.

---

<sup>26</sup> Critical habitats are areas with high biodiversity importance, covering: (i) habitats of significant importance to critically endangered, endangered, vulnerable or near-threatened species, listed as such in the International Union for Conservation of Nature (IUCN) Red List of Threatened Species; (ii) habitats of significant importance to endemic and/or restricted-range species; (iii) habitats supporting globally significant concentrations of migratory species and/or congregatory species; (iv) highly threatened and/or unique ecosystems; (v) areas associated with key evolutionary processes; and/or (vi) legally protected areas or internationally recognized areas of high biodiversity value, which may include reserves that meet the criteria of the IUCN protected area management categories I through VI; World Heritage Sites; areas protected under the Ramsar Convention on Wetlands; core areas of world biosphere reserves; or areas in the United Nations List of National Parks and Protected Areas; sites listed in the World Database of Key Biodiversity Areas; or other sites meeting the criteria of the IUCN 2016 Global Standard for the Identification of Key Biodiversity Areas.

<sup>27</sup> High Conservation Value (HCV) is a biological, ecological, social, or cultural value of outstanding significance or critical importance. High Conservation Value areas are critical areas in a landscape which need to be appropriately managed in order to maintain or enhance High Conservation Values (HCVs). The HCV areas includes both forest and non-forest ecosystems. (Refer to Common Guidance for the identification of – HIGH CONSERVATION VALUES for further guidance on the interpretation of the HCV definitions and their identification in practice, to achieve standardization in use of the HCV approach. Also refer to Common Guidance for the Management and Monitoring of – HIGH CONSERVATION VALUES guidance on management and monitoring of HCVs, to be used as a companion to the identification guidance.)

<sup>28</sup> [Universal Declaration of Human Rights](#).

Consequently, the implementation of environmental and social safeguards within project activities must align with and uphold these human rights principles. Additionally, Human rights are central for sustainable development, poverty alleviation and ensuring fair distribution of development opportunities and benefits. Also, an activity is to be implemented with due respect for human rights by avoiding infringement on the human rights of others and addressing adverse human rights impacts that the activity may cause or to which it may contribute.

40. Activity participants shall commit to the Universal Declaration of Human Rights by carrying out human rights' due diligence for the proposed A6.4 activity. Activity participants shall identify, evaluate, prevent and mitigate actual or potential adverse human rights impact caused by the proposed activity during the human rights' due diligence.

***Principle 4 (Human rights) criteria:***

41. P4.1:-An activity shall be implemented with respect for participation and inclusion and shall not undermine the national or regional measures for the realization of the human rights including those related to sustainable development.
42. P4.2:The activity participants shall carry out human rights due diligence to identify, evaluate, prevent and mitigate actual or potential adverse human rights impacts caused by the proposed activity, and ensure that the project contributes positively to the well-being and dignity of all stakeholders, especially the most vulnerable and marginalized, including Indigenous Peoples in line with among others, the UN Guiding Principles on Business and Human Rights, the United Nations Global Compact, and the UN Sustainable Development Goals.

**6.3.2. Principle 5: Labour**

43. Proposed activities ensure employment creation and income generation in the pursuit of poverty reduction and inclusive economic growth while activity participants shall ensure safe and healthy labour and working conditions.
  - (a) The activity participants shall ensure education programmes for local communities to access labour opportunities created by the proposed activity.
  - (b) The activity participants shall ensure the fair treatment, non-discrimination and equal opportunity of activity workers.
  - (c) The activity participants shall protect activity workers, including vulnerable workers such as women, persons with disabilities and migrant workers, contracted workers, community workers, and primary supply workers, as appropriate.
  - (d) The activity participants shall ~~prevent~~ ensure no use of all forms of forced labour<sup>29</sup> and the worst forms of child labour<sup>30</sup>.

---

<sup>29</sup> Forced labour which consists of any work or service not voluntarily performed that is exacted from an individual under threat of force or penalty shall not be used in connection with the activity. Where cases of forced labour are identified, immediate steps shall be taken to correct and remedy them.

<sup>30</sup> International Labour Organization (ILO). What is child labour. Available at: <https://www.ilo.org/international-programme-elimination-child-labour-ipec/what-child-labour>

- (e) The activity participants shall support the principles of freedom of association and collective bargaining of activity workers in a manner consistent with national law.
- (f) The activity participants shall provide activity workers with accessible means to raise workplace concerns.
- (g) The activity participants shall put measures in place to protect workers from any inherent risk of the nature of their work/sector, including, but not limited to, physical, chemical, biological and radiological hazards, and specific threats to women.

### **6.3.3. Principle 6: Health and safety**

The activity ensures to be implemented in a manner that avoids community exposure to increased health risks (e.g. pollution, contaminated areas/resources) and disease and shall not adversely affect the health of the community during its implementation, including those who, because of their circumstances, may be vulnerable.

#### ***Principle 6 (Health and safety) criteria:***

- 44. P6.2: The activity participants shall undertake appropriate assessments of the activity's risks and potential negative impacts on health and safety, including assessment while considering safety risks to communities. They shall adopt appropriate avoidance, minimization, and mitigation measures and favouring the prevention or avoidance of risks and impacts over their minimization and reduction. Additionally, they shall ensure accidents or incidents associated with the activity are appropriately recorded, reported and addressed, and that emergency preparedness and response plans are in place.
- 45. P6.3: The health and safety measures shall take into account differences in risk exposure and a gender-sensitive approach, as well as marginalized and disadvantaged groups, including children, older persons, persons with disabilities, minorities, and Indigenous Peoples.

### **6.3.4. Principle 7: Gender equality<sup>31</sup>**

- 46. The activity participants ensure to identify potential gender-based risks and impacts and introduce effective measures to avoid, prevent or mitigate such risks and impacts, thereby eliminating the possibility of reinforcing pre-existing inequalities and/or creating new ones.

#### ***Principle 7 (Gender equality) criteria:***

- 47. P7.1: The activity participants shall avoid reinforcing gender-based discrimination and shall not lead/contribute to adverse impacts on gender equality and/or the situation of women and girls in all their diversity.
- 48. P7.2: The activity participants shall apply the principles of non-discrimination, equal treatment and equal pay for equal work.

---

<sup>31</sup> <https://www.un.org/youthenvoy/2013/07/un-women-the-united-nations-entity-for-gender-equality-and-the-empowerment-of-women/#:~:text=elimination%20of%20discrimination%20against%20women,action%20and%20peace%20and%20security.>

### **6.3.5. Principle 8: Land acquisition and involuntary resettlement<sup>32</sup>**

49. The activity participants ensure to avoid activity-related land acquisition and restrictions on land use and adverse impacts on communities and persons including physical displacement (relocation, loss of residential land or loss of shelter), economic displacement (loss of land, assets, or access to assets, leading to loss of income sources or other means of livelihood), or both. The activity participants ensure to avoid involuntary resettlement. Where involuntary resettlement is unavoidable; it must be minimized, and appropriate measures to mitigate adverse impacts on displaced persons (and on host communities receiving displaced persons) must be carefully consulted, planned and implemented.

#### ***Principle 8 (Land acquisition and involuntary resettlement) criteria:***

50. P8.1: The activity participants shall avoid involuntary resettlement.
51. P8.2: When physical displacement (i.e., relocation or loss of shelter) cannot be avoided, the activity shall mitigate the displacement impacts and risks of the displaced persons and host communities to at minimum restore the livelihoods and/or living standards to pre-project levels. If the proposed activity involves Indigenous Peoples, their free, prior and informed consent<sup>33</sup> (FPIC) must be obtained in accordance with section 5.3.6 of Principle 9 and principle's criteria P9.5.
52. P8.3: The activity participants shall mitigate impacts and risks of economic displacement (loss of land, assets, or access to assets, leading to loss of income sources or other means of livelihood), when economic displacement cannot be avoided.
53. P8.4: The activity participants shall conduct a census and a socioeconomic baseline survey to identify all affected individual, group or community who will be physically or economically displaced. A resettlement action plan and/or livelihood action plan shall be integrated into the A6.4 Environmental and Social Management Plan Form where physical displacement is involved. The action plans will be developed in accordance with international best practice (e.g. [United Nations Development Programme Standard 5: Displacement and Resettlement](#)), in full consultation with the affected individual, group or community and based on good faith negotiation. Resettlement understandings reached by the activity participants and with affected individual, group or community shall be reflected in written agreements.

### **6.3.6. Principle 9: Indigenous Peoples**

54. The activity participants ensure to respect and take into account the rights of Indigenous Peoples and Indigenous individuals as contained in applicable legal obligations and commitments, which include pertinent national legislation, applicable international law, or in Indigenous legal systems. The activity participants shall recognize the Indigenous legal systems which are those that are recognized host party regulations. In the absence of host party regulations, Indigenous legal systems based on the international

---

<sup>32</sup> Involuntary resettlement refers to a scenario when affected persons or communities do not have the right to refuse land acquisition or restrictions on land use that result in displacement.

<sup>33</sup> FPIC is a specific right of Indigenous Peoples recognized in the United Nations Declaration on the Rights of Indigenous Peoples. FPIC allows Indigenous Peoples to engage in negotiations to shape the design, implementation, monitoring, and evaluation of the activity. See <https://www.fao.org/indigenous-peoples/our-pillars/fpic/en/>.

law will be recognized if they are consistent with applicable national legislation. The activity participants should also create opportunities for Indigenous Peoples to participate in and benefit from activity-related activities that may help them achieve their aspirations for economic and social development. Furthermore, the activity participants should take into account that Indigenous Peoples may play a role in sustainable development by often promoting, owning and managing activities and enterprises as partners.

***Principle 9 (Indigenous Peoples) criteria:***

55. P9.1: Activity participants shall identify all communities of Indigenous Peoples within the activity boundary who may be affected by the activity and approach them with respect, sensitivity, and transparency and ensure that Indigenous Peoples are fully informed and voluntarily participating in the identification process.
56. P9.2: The activity participants, with the full and effective participation of Indigenous Peoples involved, shall carry out an environmental and social analysis of the activities that may affect or involve Indigenous Peoples by completing the A6.4 Environmental and Social Safeguards Risk Assessment Form. Adequate resources for full and effective participation of Indigenous Peoples shall be provided. The analysis shall include the potential impacts on their rights, lands, territories, gender relations, resources, culture, cultural heritage<sup>34</sup>, and other potentially intangible impacts on Indigenous Peoples.
57. P9.3: The activity shall not result in the forcible removal of Indigenous Peoples from their lands and territories. No relocation shall take place without the FPIC of the Indigenous Peoples concerned. FPIC must be documented as well as in the agreements reached in the good faith dialogues, consultations and negotiations with the Indigenous Peoples.
58. P9.4: The activity participants shall recognize and respect the Indigenous Peoples' collective rights to own, use, and develop and control the lands, resources and territories that they possess by reason of traditional ownership or other traditional occupation or use, as well as those which they have otherwise acquired.
59. P9.5: The activity participants shall respect, protect and conserve and shall not take the cultural, intellectual, religious and/or spiritual property of Indigenous Peoples and shall not access or utilize it without their FPIC. FPIC must be obtained when there are impacts on (i) the territory or land;<sup>35</sup> (ii) cultural heritage;<sup>36</sup> or (iii) places containing sacred elements of special value for the community. FPIC must be documented both within the process as well as in the agreements reached in the dialogues and consultations and ultimately through good faith negotiation with the Indigenous Peoples.
60. P9.6: The activity participants shall ensure that Indigenous Peoples are provided with the equitable sharing of benefits to be derived from utilization and/or commercial development of natural resources on lands and territories or the use of their traditional

---

<sup>34</sup> UNESCO. Cultural heritage. Available at: <https://uis.unesco.org/en/glossary-term/cultural-heritage>

<sup>35</sup> Impacts on territories or land shall be considered in conjunction with requirements in Principle 8 (Land acquisition and involuntary resettlement) of this tool.

<sup>36</sup> Impacts on cultural heritage shall be considered in conjunction with requirements in Principle 11 (Cultural heritage) of this tool.

knowledge and practices by the activity. This shall be done through good faith negotiation in a manner that is culturally appropriate and inclusive and that does not impede land rights or equal access to basic services, including health services, clean water, energy, education, safe and decent working conditions, and housing.

#### **6.3.7. Principle 10: Corruption**

61. Activity participants and any involved stakeholders ensure to avoid, prevent, detect, and respond to corruption or corruption attempts during the design, development, implementation and operation of the proposed activity. Corruption has negative impacts on every aspect of society by diverting essential resources that are needed to alleviate poverty-enhance health outcomes, and provide children with quality education.

#### **6.3.8. Principle 11: Cultural heritage<sup>37</sup>**

62. Activity participants ensure to avoid impacts on cultural heritage. When avoidance of impacts is not possible, activity participants will identify and implement measures to address impacts on cultural heritage by completing A6.4 Environmental and Social Safeguards Risk Assessment Form and the A6.4 Environmental and Social Management Plan.

##### ***Principle 11 (Cultural heritage) criteria:***

63. P11.1: The activity shall not cause, nor contribute to the alteration, damage or removal of any sites, objects or structures of critical cultural heritage.
64. P11.2: The activity participants are responsible for designing an activity to avoid significant adverse impacts to cultural heritage. The environmental and social risk impact assessment should determine whether the proposed location of an activity is in areas where cultural heritage is expected to be found during implementation or operations. The activity participants will not proceed with the activity until an assessment by professionals and/or an entity on cultural heritage, recognized by the host government, academia and/or UNESCO<sup>38</sup>, is made to ensure that no adverse impacts to cultural heritage will occur. If the proposed activity involves Indigenous Peoples, FPIC must be obtained in accordance with section 5.3.6 of principle 9 and the P9.5 criteria.
65. P11.3: Where an activity proposes to utilize cultural heritage, including the knowledge, innovations, or practices of local communities, affected communities shall be informed of their rights under applicable law,<sup>39</sup> the scope and nature of the proposed commercial development, and the potential consequences of such development.

---

<sup>37</sup> Cultural heritage provides continuity in tangible and intangible forms between the past, present and future. People identify with cultural heritage as a reflection and expression of their constantly evolving values, beliefs, knowledge and traditions. Cultural heritage, in its many manifestations, is important as a source of valuable scientific and historical information, as an economic and social asset for development, and as an integral part of people's cultural identity and practice.

<sup>38</sup> UNESCO expert facility. Available at: <https://www.unesco.org/creativity/en/expert-facility>

<sup>39</sup> Cultural heritage is preserved, protected and promoted in mitigation activities in a manner consistent with the United Nations Educational, Scientific and Cultural Organization (UNESCO) Cultural Heritage conventions or any other national or international legal instruments that might have a bearing on the use of cultural heritage.



## **7. Demonstrating impact to sustainable development**

66. Activity participants shall demonstrate the direct impact<sup>40</sup> of their Article 6.4 activities and/or Article 6.4 PoA to the sustainable development of the host Party(ies) through reference to the host Party(ies) sustainable development priorities/objectives referred in the section 7.1 and SDGs in the section 7.2 by completing the A6.4 Sustainable Development Tool Form.

### **7.1. Consideration of sustainable development priorities/objectives of host party**

67. Activity participants shall identify the host Party's sustainable development priorities/objectives that may include national strategies for sustainable development and/or SDG achievement, SDG national targets and indicators, and economic, social and environmental indicators related to the proposed activity type.
68. If the host Party defines national sustainable development objectives, national strategies for sustainable development and/or SDG achievement, SDG national targets and indicators relevant to a proposed activity, activity participants shall include explicitly identify any SDG-specific priorities/objective in the section of A6.4 Sustainable Development Form.
69. Activity participants shall also identify any host Party priorities/objectives that are not clearly responsive to any SDG in the section of the form provided for this purpose.

### **7.2. Identification of positive and negative impacts to the 17 Sustainable Development Goals**

70. The 17 SDGs were established by the United Nations in 2015 as part of the 2030 Agenda for Sustainable Development. The global indicator framework for Sustainable Development Goals developed by the Inter-Agency and Expert Group on SDG Indicators (IAEG-SDGs) was later adopted by the General Assembly on 6 July 2017. The 'Global indicator framework for the Sustainable Development Goals and targets of the 2030 Agenda for Sustainable Development'<sup>41</sup> provides 17 SDGs, 169 targets and 249 indicators.
71. Activity participants shall identify the SDGs that the proposed activity directly impacts positively and/or negatively. Activity participants shall provide justification of any excluded SDGs keeping in mind the sustainable development priorities/objectives of the host party considered in section 7.1 and the criteria defined in the paragraph 9772 below. In the assessment of negative impacts to the 17 SDGs, the activity participants may refer to the outcome of the section 6 of this tool.
72. Impacts to the SDGs and their goals shall:
- (a) Be relevant to the activity type (based on SDGs targets and indicators);
  - (b) Result in a direct impact (i.e. the activity is the main driver of change);

---

<sup>40</sup> Direct impact: an impact which is based on direct contribution/interaction by an activity with an environmental, social or economic component during the crediting period.

<sup>41</sup> The latest "Global indicator framework for the Sustainable Development Goals and targets of the 2030 Agenda for Sustainable Development" is available at <https://unstats.un.org/sdgs/indicators/indicators-list/> in six official languages of the UN.



- (c) Be recurring/lasting during the crediting period of a proposed activity and impacting the stakeholders and/or local environment in a direct and measurable way.
73. Once activity participants identify SDGs impacted by a proposed activity, they are required to:
- (a) Review respective targets defined under the identified SDGs from the latest 'Global indicator framework for the Sustainable Development Goals and targets of the 2030 Agenda for Sustainable Development'.
  - (b) Select a target(s) under the SDGs based on the criteria defined in the paragraph 7272 above;
  - (c) Review indicators defined under a selected target(s) under the identified SDGs and select a relevant indicator(s). Considering that the indicators are defined at the regional and national levels, activity participants are required to develop its own activity-level SD indicators as per the section 7.2.1 below.

### 7.2.1. Developing activity-level SD indicators

74. Activity participants shall take the following steps to establish activity-level sustainable development indicators for each identified direct impact to the SDGs resulting from the proposed activity:
- (a) **Step 1:** Activity participants are required to elaborate relevant activity-level indicators for the SDGs identified as impacted, taking into consideration the SDG, SDG targets and SDG indicators. All relevant SDG target and corresponding indicator(s) for each SDG should be chosen (see Table 3 below);
  - (b) **Step 2:** The proposed activity-level sustainable development indicator(s) can be qualitative or quantitative and shall be monitorable over the crediting period. The proposed activity-level sustainable development indicator(s) shall:
    - (i) Be in line with the objectives and intent of the SDGs and their corresponding targets;<sup>42</sup>
    - (ii) Be directly impacted by the activity
    - (iii) Not be a one-off/only once; and
    - (iv) Include the monitoring approach and parameters, including frequency of monitoring, to be used for each selected activity-level SDG target indicator defined in the A6.4 Sustainable Development Form.

**Table 3. Example of defining activity-level sustainable development indicator**

Sustainable Development (SDG)	Goal	SDG target	SDG indicator	Activity-level sustainable development indicator
Goal 1. End poverty in all its forms		1.4 By 2030, ensure that all men and	1.4.1 Proportion of population living in	Proportion of population living in

<sup>42</sup> United Nations-level SDGs, targets and indicators: <https://unstats.un.org/sdgs/indicators/indicators-list/>.

<b>Sustainable Development (SDG)</b>	<b>Goal</b>	<b>SDG target</b>	<b>SDG indicator</b>	<b>Activity-level sustainable development indicator</b>
<b>everywhere (for renewable energy activity or low greenhouse gas emitting safe drinking water production system implementation activity)</b>		women, in particular the poor and the vulnerable, have equal rights to economic resources, as well as access to basic services, ownership and control over land and other forms of property, inheritance, natural resources, appropriate new technology and financial services, including microfinance	households with access to basic services	households within activity area with access to basic services <sup>43</sup> (drinking water & modern energy)
<b>Goal 5. Achieve gender equality and empower all women and girls (all activity types)</b>		5.1 End all forms of discrimination against all women and girls everywhere	5.1.1 Whether or not legal frameworks are in place to promote, enforce and monitor equality and non-discrimination on the basis of sex	Whether or not activity participants have put in place a policy or gender action plan to ensure, enforce and monitor equality and discrimination on the basis of sex in accordance with the host party regulations. Activity participants are also [encouraged] [required] to apply or relevant standards, industry best practice and their own voluntary policies.
<b>Goal 5. Achieve gender equality and empower all women and girls (for high efficiency biomass-fired cookstove activity)</b>		5.4 Recognize and value unpaid care and domestic work through the provision of public services, infrastructure and social protection policies and the	5.4.1 Proportion of time spent on unpaid domestic and care work by sex, age and location	Average time saving associated with cooking time and fuel collection

<sup>43</sup> <https://sdg-indikatoren.de/en/1-4-1/> provides basic services defined in 1.4.1.

<b>Sustainable Development (SDG)</b>	<b>Goal</b>	<b>SDG target</b>	<b>SDG indicator</b>	<b>Activity-level sustainable development indicator</b>
		promotion of shared responsibility within the household and the family as nationally appropriate		
<b>Goal 6. Clean Water and sanitation (for low greenhouse gas emitting safe drinking water production system implementation activity)</b>		6.1 By 2030, achieve universal and equitable access to safe and affordable drinking water for all	6.1.1 Proportion of population using safely managed drinking water services	Total number of populations served with satisfactory level of safe water
<b>Goal 7. Ensure access to affordable, reliable, sustainable and modern energy for all (for the renewable energy activity)</b>		7.1 By 2030, ensure universal access to affordable, reliable and modern energy services	7.1.1 Proportion of population with access to electricity	Total number of populations served with access to electricity
<b>SDG8. Decent work and economic growth (for the methane recovery activity from the animal manure management activity)</b>		8.5 By 2030, achieve full and productive employment and decent work for all women and men, including for young people and persons with disabilities, and equal pay for work of equal value	8.5.1 Average hourly earnings of female and male employees, by occupation, age and persons with disabilities status	Number of full-time jobs created for males and females by the project  Percentage of the activity employees with salaries equivalent to the average wage of a country
<b>SDG 8. Decent work and economic growth</b>		8.8 Protect labour rights and promote safe and secure working environments for all workers, including migrant workers, in particular women migrants, and those in precarious employment	8.8.2 Level of national compliance with labour rights (freedom of association and collective bargaining) based on International Labour Organization textual sources and national legislation, by sex and migrant status	Level of compliance by the A6.4 activity with labour rights (freedom of association and collective bargaining) based on host party regulations
<b>Goal 13. Climate action (for renewable energy activity)</b>		13.2 Integrate climate change measures into national policies, strategies and planning	13.2.1 Number of countries with nationally determined contributions, long-term strategies,	Amount of GHG emissions avoided or sequestered as a result of the activity per year in tCO <sub>2</sub> e

Sustainable Development (SDG)	Goal	SDG target	SDG indicator	Activity-level sustainable development indicator
			national adaptation plans and adaptation communications, as reported to the secretariat of the United Nations Framework Convention on Climate Change  13.2.2 Total greenhouse gas (GHG) emissions per year	

### 7.3. Monitoring description/requirement of activity-level SD indicators

75. The activity participants shall describe in the A6.4 Sustainable Development Form the monitoring procedures of the sustainable development indicators, including:
- (a) Description of activity level SD indicators including selected SDGs, SDG targets and SDG indicators;
  - (b) Data unit and source of data;
  - (c) Information on monitoring/measurement procedures/methods;
  - (d) Monitoring frequency (at least annual).
76. Once activity participants complete the A6.4 Sustainable Development form, the outcome (including the form) must be shared with the DOE performing validation as per the A6.4 mechanism activity cycle procedures and the A6.4 mechanism activity standards. Activity participants shall report the outcome of monitoring of activity-level SD indicators as per A6.4 Sustainable Development Form in the monitoring report that shall be verified by a DOE.

## 8. Validation

77. The requirements relating to validation for Article 6.4 mechanism projects/PoA is set out in the Article 6.4 validation and verification standard for projects/PoA. The DOE shall validate the appropriateness, relevance and sufficiency of information provided in the A6.4 Environmental and Social Safeguards Risk Assessment Form and the A6.4 Environmental and Social Management Plan as reported in [activity design form] [project design document (PDD)] by reviewing stakeholder consultation documents[inputs/comments] and conducting interviews with local stakeholders and employing professional judgement in order to:
- (a) Validate quantitative as well as qualitative information to judge the adequacy of fulfilment of identification of environmental and/or social risks caused by a

- proposed activity, the do-no-harm Risk Assessment, risk mitigation plan and environmental and social indicators due to the activity considering host party regulations. Activity participants are also [encouraged] [required] to apply relevant standards, best practices and their own voluntary policies[, international obligation, standards] [international law], in addition to or in absence of host party regulations;
- (b) Validate that the outcome of the A6.4 Environmental and Social Safeguards Risk Assessment Form and A6.4 Environmental and Social Management Plan are shared during the local stakeholder consultation and reflect inputs received from the local stakeholder consultation to the form and plan;
  - (c) Validate that established continuous engagement of local stakeholders is in accordance with the “Article 6.4 activity standard for projects” or the “Article 6.4 activity standard for programmes of activities”.
78. The DOE shall validate the appropriateness, relevance and sufficiency of information provided in the A6.4 Sustainable Development Form and the A6.4 Environmental and Social Management Plan by reviewing relevant host party documentation on sustainable development objective/criteria/goal, stakeholder consultation documents [inputs/comments] conducting interviews with local stakeholders, and employing professional judgement in order to:
- (a) Validate sustainable development objective/indicators of host party, in the A6.4 Sustainable Development Form, are in line with host Party’s definition (when available);
  - (b) Validate activity-level SD indicators defined in the A6.4 Sustainable Development Form are universally applicable to the activity type and significant by recurring/lasting during at least the whole crediting period of a proposed activity and impacting the primary stakeholders and/or local environment in a direct and measurable way and result in a primary benefit;
  - (c) Validate description of activity-level SD indicators is accurately reflected in the A6.4 Sustainable Development Form.
79. The DOE shall provide validation opinion that based on the A6.4 Environmental and Social Management Plan and the A6.4 Sustainable Development Form, the proposed activity results in no harm and contributes to sustainable development.
80. If the DOE identifies the presence of unavoidable negative impacts that exceed the environmental and social safeguards principle and criteria and may not be remediated by consultation or mitigation, the DOE shall issue a negative validation opinion as per A6.4 validation and verification standard or submit a deviation request submitted to the Supervisory Body prior to submitting a request for registration. Box 1 below contains a best practice example of validation.

**Box 1. Best practice example of validation**

A proposed activity is to distribute energy efficient appliances to households in coastal and peninsular areas. An activity participants identify that its activity contributes to SDG 14<sup>44</sup> and SDG 15<sup>45</sup> based on the location of the proposed activity that is near to the marine and forest ecosystem. During the validation, the DOE raises a corrective action request (CAR) to request the activity participants to clarify how a proposed activity's impact on SDG 14 and SDG 15 is direct and primary as per the section 6.3 of the applied tool. The activity participants acknowledges that its activity does not directly contribute to SDG 14 and SDG 15 and excludes its contribution to SDG 14 and SDG 15 from the A6.4 Sustainable Development Form. Based on this revision, the DOE close its CAR accordingly.

## 9. Verification

81. the requirements relating to the verification for Article 6.4 mechanism projects/PoA are set out in the Article 6.4 validation and verification standard for projects/PoA. The DOE shall verify the appropriateness, relevance and sufficiency of information provided in the monitoring of the environmental and social indicators in the A6.4 Environmental and Social Management Plan and activity-level SD indicators in the A6.4 Sustainable Development Form reported in a monitoring report.
82. If the DOE observes any deviation from the information in the A6.4 Environmental and Social Management Plan and the A6.4 Sustainable Development Form that are validated at the registration, it will provide its verification opinion on the observed deviation on whether the activity is still within the social and environmental impact and/or sustainable development impact defined in the A6.4 Environmental and Social Safeguards Risk Assessment Form, the A6.4 Environmental and Social Management Plan and the A6.4 Sustainable Development Tool form.
83. The DOE shall review any inputs comments received via continuous engagement of local stakeholders in accordance with the "Article 6.4 activity standard for projects" or the "Article 6.4 activity standard for programmes of activities and conduct interviews with local stakeholders and employ professional judgement in the evaluation of the ex-post fulfilment of do-no-harm and sustainable development impacts due to the activity considering host Party regulations applicable to the proposed activity.
84. The DOE shall confirm that the activity participants have measured, monitored and reported parameters established in the A6.4 Environmental and Social Management Plan and the A6.4 Development Form submitted at the registration stage. If the DOE identifies that there are unavoidable negative impacts that exceed parameters established in the A6.4 Environmental and Social Management Plan and A6.4 Sustainable Development Form and may not be remediated by consultation or mitigation, the DOE shall issue a negative verification opinion as per A6.4 validation and verification standard or submit a deviation request submitted to the Supervisory

---

<sup>44</sup> SDG 14 (life below water) is to conserve and sustainably use the oceans, seas and marine resources for sustainable development (<https://sdgs.un.org/goals/goal14>)

<sup>45</sup> SDG 15 (life on land) is protect, restore and promote sustainable use of terrestrial ecosystems, sustainably manage forests, combat desertification, and halt and reverse land degradation and halt biodiversity loss (<https://sdgs.un.org/goals/goal15>).

Body prior to submitting a request for issuance. Box 2 below contains a best practice example of verification.

**Box 2. Best practice example of verification**

Activity participants identify its contribution to SDG 8<sup>46</sup> based on jobs generated from the proposed activity and include the number of generated jobs in the A6.4 Sustainable Development Form as a monitoring indicator. During the verification of the monitoring of the number of jobs generated under SDG 8, a DOE identifies that the number includes the short-term construction phase jobs and raises a CAR to request activity participants to clarify how the inclusion of short-term construction phase jobs is in line with section 6.3 of the applied tool which requires sustainable development impact to be significant by recurring/lasting during at least the whole crediting period of an activity. The activity participants acknowledges that the inclusion of short-term construction phase jobs is not in line with the sustainable development impact defined in section 6.3 of the applied tool and the DOE closes a CAR by verifying a revised number which does not include the number of short-term construction phase jobs.

DRAFT

---

<sup>46</sup> SDG 8 (Decent work and economic growth) is to promote sustained, inclusive and sustainable economic growth, full and productive employment and decent work for all (<https://sdgs.un.org/goals/goal8>).

## Appendix 1. Principle's guiding questions for the do-no-harm risk assessment of the environmental and social safeguards principle and criteria

### 1. Instruction

1. A6.4 Environmental and Social Safeguards Risk Assessment Form is based on this Appendix. This form shall be completed in accordance with the guidance and in relation to the principles and criteria in Section 6 of this Tool.

### 2. Environmental safeguards principles

#### 2.1. Principle 1: Climate and energy

2. This principle and any criteria are contained in Social and Environmental Safeguards, Section 6.2.1.

Table 1. Guiding questions for the do-no-harm risk assessment on climate and energy

<b>P 1 Climate and energy (Energy)</b>			<b>Host regulations assessment<sup>1</sup></b>	<b>Party assessment<sup>2</sup></b>
<b>Principle level question: PLQ 1.1</b>	Will the proposed A6.4 activity increase the GHG emissions over the baseline scenario that are not considered under Article 6.4 approved applied methodology?	<input type="checkbox"/> Yes <input type="checkbox"/> Potentially <input type="checkbox"/> No <input type="checkbox"/> N/A		
<b>Principle level question: PLQ 1.2</b>	Will the proposed A6.4 activity negatively <sup>3</sup> affect the availability and reliability of the energy	<input type="checkbox"/> Yes <input type="checkbox"/> Potentially <input type="checkbox"/> No <input type="checkbox"/> N/A		

<sup>1</sup> Assessment and conclusion provided by activity participants regarding the proposed activity alignment with host Party regulations.

<sup>2</sup> Conclusions provided by the activity participants in regard to the proposed activity alignment with host party relevant standards, industry best practices or their own voluntary policies[, international obligation, standards] [international law] applicable to the proposed activity for transparency and compliance purposes.

<sup>3</sup> For example: if the proposed activity intends to consume high amount of energy that might result into overload exiting energy supply.



<b>P 1 Climate and energy (Energy)</b>			<b>Host Party regulations assessment<sup>1</sup></b>	<b>Generic assessment<sup>2</sup></b>
	supply to other users?			
<b>Conclusion of the do-no-harm risk assessment on principle 1 (Climate and energy):</b> If the answer to one of the principle level questions is either “Yes” or “Potentially” above, the conclusion of the do-no-harm risk assessment is either “Yes” or “Potentially” accordingly. Under these circumstances, the activity participants are required to prepare mitigation measures under a specific principle’s criteria in the A6.4 Environmental and Social Management plan.				<input type="checkbox"/> Yes <input type="checkbox"/> Potentially <input type="checkbox"/> No <input type="checkbox"/> N/A

## 2.2. Principle 2: Air, land and water

- This principle and any criteria are contained in Social and Environmental Safeguards, Section 6.2.2.

**Table 2. Guiding questions for the do-no-harm risk assessment on air**

<b>P2.1 Air</b>			<b>Host Party regulations assessment<sup>4</sup></b>	<b>Generic assessment<sup>5</sup></b>
<b>Principle level question: PLQ 2.1.a</b>	Does the proposed A6.4 activity involve to the release of air pollutants due to routine and non-routine activities, with the potential for local, regional and transboundary impacts?  If yes or potentially, please respond to guiding questions AGO2.1.1-1 and AGO2.1.1-2.	<input type="checkbox"/> Yes <input type="checkbox"/> Potentially <input type="checkbox"/> No <input type="checkbox"/> N/A		

<sup>4</sup> Assessment and conclusion provided by activity participants regarding the proposed activity alignment with host Party regulations.

<sup>5</sup> Conclusions provided by the activity participants in regard to the proposed activity alignment with host party relevant standards, industry best practices or their own voluntary policies [international obligation, standards] [international law] applicable to the proposed activity for transparency and compliance purposes.

<b>P2.1 Air</b>		<b>Host regulations assessment<sup>4</sup></b>	<b>Party assessment<sup>4</sup></b>	<b>Generic assessment<sup>5</sup></b>
<b>Principle level question: PLQ 2.1.b</b>	Is the proposed A6.4 activity located in an area <sup>6</sup> where historical pollution such as air contamination exists?  If yes or potentially, please respond guiding question AGO2.1.2	<input type="checkbox"/> <b>Yes</b> <input type="checkbox"/> <b>Potentially</b> <input type="checkbox"/> <b>No</b> <input type="checkbox"/> <b>N/A</b>		
<b>Additional guiding questions:</b>				
<b>AGO2.1.1-1</b>	Does the proposed A6.4 activity have any risks of the release of air pollutants that cannot be minimized and/or controlled in the terms of intensity and mass flow of their release in accordance with host party regulations?	<input type="checkbox"/> <b>Yes</b> <input type="checkbox"/> <b>Potentially</b> <input type="checkbox"/> <b>No</b> <input type="checkbox"/> <b>N/A</b>		
<b>AGO2.1.1-2</b>	Does the proposed A6.4 activity have a risk of releasing pollutants into the air in routine, non-routine, or accidental circumstances with the potential for local, regional, and transboundary impacts?	<input type="checkbox"/> <b>Yes</b> <input type="checkbox"/> <b>Potentially</b> <input type="checkbox"/> <b>No</b> <input type="checkbox"/> <b>N/A</b>		
<b>AGO2.1.2</b>	Does the proposed A6.4 activity have any risk of historical pollution	<input type="checkbox"/> <b>Yes</b> <input type="checkbox"/> <b>Potentially</b> <input type="checkbox"/> <b>No</b>		

<sup>6</sup> Area where activity is located within the activity boundary as defined in the approved/applicable A6.4 methodology.

<b>P2.1 Air</b>		<b>Host Party regulations assessment<sup>4</sup></b>	<b>Generic assessment<sup>5</sup></b>
	such as air contamination not in accordance with host party regulations or subnational and local regulations where the activity participants are legally responsible for mitigation measures?	<input type="checkbox"/> N/A	
<b>Conclusion of the do-no-harm risk assessment on principle 2 (Air, land and water) – Air:</b> If the answer to one of the additional guiding questions is either “Yes” or “Potentially” above, the conclusion of the do-no-harm risk assessment is either “Yes” or “Potentially” accordingly. Under these circumstances, the activity participants are required to prepare mitigation measures under a specific principle’s criteria in the A6.4 Environmental and Social Management plan.			<input type="checkbox"/> Yes <input type="checkbox"/> Potentially <input type="checkbox"/> No <input type="checkbox"/> N/A

**Table 3. Guiding questions for the do-no-harm risk assessment on land**

<b>P2.2 Land</b>		<b>Host Party regulations assessment<sup>7</sup></b>	<b>Generic assessment<sup>8</sup></b>
<b>Principle level question: PLQ 2.2.a</b>	Does the proposed A6.4 activity lead to the release of land pollutants due to routine and non-routine activities, with the potential for local, regional and transboundary impacts?  If yes or potentially, please respond to guiding questions	<input type="checkbox"/> Yes <input type="checkbox"/> Potentially <input type="checkbox"/> No <input type="checkbox"/> N/A	

<sup>7</sup> Assessment and conclusion provided by activity participants regarding the proposed activity alignment with host Party regulations.

<sup>8</sup> Conclusions provided by the activity participants in regard to the proposed activity alignment with host party relevant standards, industry best practices or their own voluntary policies [international obligation, standards] [international law] applicable to the proposed activity for transparency and compliance purposes.

<b>P2.2 Land</b>		<b>Host regulations assessment<sup>7</sup></b>	<b>Party assessment<sup>7</sup></b>	<b>Generic assessment<sup>8</sup></b>
	AGO2.2.1-1, AGO2.2.1-2, AGO2.2.3, AGO2.2.4 and AGO2.2.5			
<b>Principle level question: PLQ 2.1.b</b>	Is the proposed A6.4 activity located in an area where historical pollution such as land contamination exists?  If yes or potentially, please respond to guiding questions AGO2.2.2	<input type="checkbox"/> <b>Yes</b> <input type="checkbox"/> <b>Potentially</b> <input type="checkbox"/> <b>No</b> <input type="checkbox"/> <b>N/A</b>		
<b>Additional guiding questions:</b>				
<b>AGO2.2.1-1</b>	Does the proposed A6.4 activity have any risk of the release of land pollutants that cannot be, minimized and/or controlled in terms of the intensity and mass flow of their release in accordance with host party regulations? <sup>9</sup>	<input type="checkbox"/> <b>Yes</b> <input type="checkbox"/> <b>Potentially</b> <input type="checkbox"/> <b>No</b> <input type="checkbox"/> <b>N/A</b>		
<b>AGO2.2.1-2</b>	Does the proposed A6.4 activity have a risk of releasing pollutants to land in routine, non-routine or accidental circumstances with the potential for	<input type="checkbox"/> <b>Yes</b> <input type="checkbox"/> <b>Potentially</b> <input type="checkbox"/> <b>No</b> <input type="checkbox"/> <b>N/A</b>		

<sup>9</sup> Including, but not limited to, soil policy, soil protection laws, regulations and international best practices governing fertilizer or soil conditioner use in croplands and grasslands, including in relation to A6.4 carbon dioxide removal activities that involve the addition of carbonaceous or other materials or matter to soils. Particular attention should be given to potential contaminants and by-products from carbon dioxide removal activities on land in relation to, for example, the maximums of tolerable free metals and other types of contaminants in arable and grassland soils.

<b>P2.2 Land</b>		<b>Host regulations assessment<sup>7</sup></b>	<b>Party assessment<sup>7</sup></b>	<b>Generic assessment<sup>8</sup></b>
	local, regional, and transboundary impacts?			
<b>AGO2.2.2</b>	Does the proposed A6.4 activity have any risk of continuing historical pollution such as air contamination not in accordance with host party regulations or subnational and local regulations where the activity participants are legally responsible for mitigation measures?	<input type="checkbox"/> <b>Yes</b> <input type="checkbox"/> <b>Potentially</b> <input type="checkbox"/> <b>No</b> <input type="checkbox"/> <b>N/A</b>		
<b>AGO2.2.3</b>	Have the activity participants identified any risk to soil and land use, as well as surface and groundwaters due to land erosion caused by the proposed A6.4 activity?			
<b>AGO2.2.4</b>	Have the activity participants identified any risk to the functions and services provided by the landscape by degradation of soil resources and loss of ecosystem services provided by soils?			
<b>AGO2.2.5</b>	Does the proposed A6.4 activity that involves the production, harvesting and/or management of	<input type="checkbox"/> <b>Yes</b> <input type="checkbox"/> <b>Potentially</b> <input type="checkbox"/> <b>No</b> <input type="checkbox"/> <b>N/A</b>		

<b>P2.2 Land</b>		<b>Host Party regulations assessment<sup>7</sup></b>		<b>Generic assessment<sup>8</sup></b>
	living natural resources by small-scale landholders and/or local communities pose any risk related to appropriate and culturally sensitive sustainable resource management practices ?			
<b>Conclusion of the do-no-harm risk assessment on principle 2 (Air, land and water) – Land:</b> If the answer to one of the additional guiding questions is either “Yes” or “Potentially” above, the conclusion of the do-no-harm risk assessment is either “Yes” or “Potentially” accordingly. Under these circumstances, the activity participants are required to prepare mitigation measures under a specific principle’s criteria in the A6.4 Environmental and Social Management plan.				<input type="checkbox"/> Yes <input type="checkbox"/> Potentially <input type="checkbox"/> No <input type="checkbox"/> N/A

**Table 4. Guiding questions for the do-no-harm risk assessment on water**

<b>P2.3 Water</b>		<b>Host Party regulations assessment<sup>10</sup></b>		<b>Generic assessment<sup>11</sup></b>
<b>Principle level question: PLQ2.3</b>	Does the proposed A6.4 activity involve water usage that can result in negative impacts on water resources and water-related ecosystems, including mountains, coasts, oceans, forests, wetlands, rivers, aquifers and lakes?	<input type="checkbox"/> Yes <input type="checkbox"/> Potentially <input type="checkbox"/> No <input type="checkbox"/> N/A		

<sup>10</sup> Assessment and conclusion provided by activity participants regarding the proposed activity alignment with host Party regulations.

<sup>11</sup> Conclusions provided by the activity participants in regard to the proposed activity alignment with host party relevant standards, industry best practices or their own voluntary policies [international obligation, standards] [international law] applicable to the proposed activity for transparency and compliance purposes.

<b>P2.3 Water</b>		<b>Host Party regulations assessment<sup>10</sup></b>	<b>Generic assessment<sup>11</sup></b>
	<i>(If yes or potentially, please respond to the guiding questions)</i>		
<b>Additional guiding questions:</b>			
<b>AGO2.3.1</b>	Does the proposed A6.4 activity have any risk that could compromise the promotion of the sustainable and efficient use of water resources to avoid negative impacts on water resources and water-related ecosystems, including mountains, coasts, oceans, forests, wetlands, rivers, aquifers and lakes?	<input type="checkbox"/> <b>Yes</b> <input type="checkbox"/> <b>Potentially</b> <input type="checkbox"/> <b>No</b> <input type="checkbox"/> <b>N/A</b>	
<b>AGO2.3.2-1</b>	Does the proposed A6.4 activity have a risk of releasing pollutants to water in routine, non-routine or accidental circumstances?	<input type="checkbox"/> <b>Yes</b> <input type="checkbox"/> <b>Potentially</b> <input type="checkbox"/> <b>No</b> <input type="checkbox"/> <b>N/A</b>	
<b>AGO2.3.2-2</b>	Does the proposed A6.4 activity involve or lead to any potential risk of pollutant release that cannot be avoided? <sup>12</sup>	<input type="checkbox"/> <b>Yes</b> <input type="checkbox"/> <b>Potentially</b> <input type="checkbox"/> <b>No</b> <input type="checkbox"/> <b>N/A</b>	

<sup>12</sup> A6.4 activities involving subsurface geological CO<sub>2</sub> storage shall be undertaken consistent with local and national surface and groundwater protection laws and regulations. Attention should also be given to potential impacts on water bodies that may receive runoff that contains materials or other by-products from land treated for the purpose of CO<sub>2</sub> removal. Consideration shall also be given to relevant marine treaties (e.g. United Nations Convention on Law of the Sea; London Convention and Protocol; Oslo-Paris Treaty) that in some cases apply to CO<sub>2</sub> removal activities, including those clauses relating to the control of land-based sources of marine pollution.

<b>P2.3 Water</b>		<b>Host Party regulations assessment<sup>10</sup></b>	<b>Generic assessment<sup>11</sup></b>
<b>AGO2.3.3</b>	Have the activity participants identified any risk in adopting measures to avoid or reduce water usage so that the activity's water consumption that have significant negative impacts on people and biodiversity in terms of availability, accessibility, reliability and quality as the same level to the environmental and social baseline?	<input type="checkbox"/> <b>Yes</b> <input type="checkbox"/> <b>Potentially</b> <input type="checkbox"/> <b>No</b> <input type="checkbox"/> <b>N/A</b>	
<b>AGO2.3.4</b>	Have the activity participants identified any risk in implementing technically and financially feasible and cost-effective measures for improving efficiency in its consumption of water, with a focus on core areas of the proposed activity(ies)?	<input type="checkbox"/> <b>Yes</b> <input type="checkbox"/> <b>Potentially</b> <input type="checkbox"/> <b>No</b> <input type="checkbox"/> <b>N/A</b>	
<b>Conclusion of the do-no-harm risk assessment on principle 2 (Air, land and water) – Water:</b> If the answer to one of the additional guiding questions is either "Yes" or "Potentially" above, the conclusion of the do-no-harm risk assessment is either "Yes" or "Potentially" accordingly. Under these circumstances, the activity participants are required to prepare mitigation measures under a specific principle's criteria in the A6.4 Environmental and Social Management plan.			<input type="checkbox"/> <b>Yes</b> <input type="checkbox"/> <b>Potentially</b> <input type="checkbox"/> <b>No</b> <input type="checkbox"/> <b>N/A</b>

### 2.3. Principle 3: Ecology and natural resources

4. This principle and any criteria are contained in Social and Environmental Safeguards, Section 6.2.3.



**Table 5. Guiding questions for the do-no-harm risk assessment on ecology and natural resources**

<b>Principle 3 Ecology and natural resources</b>			<b>Host Party regulations assessment<sup>13</sup></b>	<b>Generic assessment<sup>14</sup></b>
<b>Principle level question: PLQ3</b>	Will the proposed A6.4 activity result in direct, indirect and cumulative activity-related impacts on habitats and the biodiversity they support, including threats to biodiversity (e.g. habitat loss, degradation and fragmentation, invasive alien species), overexploitation, hydrological changes, nutrient-loading, pollution and incidental take, as well as projected climate change impacts? <sup>15</sup>  (If yes or potentially, please respond to the additional guiding questions)	<input type="checkbox"/> <b>Yes</b> <input type="checkbox"/> <b>Potentially</b> <input type="checkbox"/> <b>No</b> <input type="checkbox"/> <b>N/A</b>		
<b>Additional guiding question:</b>				
<b>AGO3.1.1</b>	Have the activity participants identified any risk during the precautionary approach to natural resource	<input type="checkbox"/> <b>Yes</b> <input type="checkbox"/> <b>Potentially</b> <input type="checkbox"/> <b>No</b> <input type="checkbox"/> <b>N/A</b>		

<sup>13</sup> Assessment and conclusion provided by activity participants regarding the proposed activity alignment with host Party regulations. In situations where an A6.4 activity could lead to the runoff of materials from land to other water bodies and the ocean, for example, in the case of some CO<sub>2</sub> removal methods, consideration should be given to relevant marine treaties regarding land-based sources of marine pollution (e.g. United Nations Convention on Law of the Sea; Oslo-Paris Treaty; Kuwait Regional Convention; Southeast Pacific Protocol, Barcelona Convention, etc.).

<sup>14</sup> Conclusions provided by the activity participants in regard to the proposed activity alignment with host party relevant standards, industry best practices or their own voluntary policies [international obligation, standards] [international law] applicable to the proposed activity for transparency and compliance purposes.

<sup>15</sup> In the case of some CO<sub>2</sub> removal methods, this can include the potential impacts on the pH of receiving water bodies and the effects this may have on the biota and habitat therein (e.g. impacts upon fish breeding grounds, such as mineral deposition and calcification of sediments and gravels).

<b>Principle 3 Ecology and natural resources</b>			<b>Host Party regulations assessment<sup>13</sup></b>	<b>Generic assessment<sup>14</sup></b>
	conservation, including to soil, minerals and other depletable natural resources, that can result in irreversible negative environmental impacts by the proposed activity?			
<b>AGO3.2.1</b>	Does a proposed A6.4 activity introduce any risk of loss of ecosystem services?	<input type="checkbox"/> <b>Yes</b> <input type="checkbox"/> <b>Potentially</b> <input type="checkbox"/> <b>No</b> <input type="checkbox"/> <b>N/A</b>		
<b>AGO3.2.2-1</b>	Does a proposed A6.4 activity have a risk of unsustainable forest management, including timber harvesting?	<input type="checkbox"/> <b>Yes</b> <input type="checkbox"/> <b>Potentially</b> <input type="checkbox"/> <b>No</b> <input type="checkbox"/> <b>N/A</b>		
<b>AGO3.2.2-2</b>	Does a proposed A6.4 activity pose a risk of depleting biodiversity and ecosystem functionality in areas where improved forest management is undertaken?	<input type="checkbox"/> <b>Yes</b> <input type="checkbox"/> <b>Potentially</b> <input type="checkbox"/> <b>No</b> <input type="checkbox"/> <b>N/A</b>		
<b>AGO3.2.3</b>	Does the proposed A6.4 activity have any risk of not meeting the requirements for environment-friendly, socially beneficial, and economically viable plantations using native species whenever possible?	<input type="checkbox"/> <b>Yes</b> <input type="checkbox"/> <b>Potentially</b> <input type="checkbox"/> <b>No</b> <input type="checkbox"/> <b>N/A</b>		
<b>AGO3.2.4-1</b>	Does the proposed A6.4 activity pose any risk to the any recognized endangered, vulnerable or critically endangered species?	<input type="checkbox"/> <b>Yes</b> <input type="checkbox"/> <b>Potentially</b> <input type="checkbox"/> <b>No</b> <input type="checkbox"/> <b>N/A</b>		
<b>AGO3.2.4-2</b>	Does the proposed A6.4 activity pose any risk to the identified	<input type="checkbox"/> <b>Yes</b> <input type="checkbox"/> <b>Potentially</b> <input type="checkbox"/> <b>No</b> <input type="checkbox"/> <b>N/A</b>		

<b>Principle 3 Ecology and natural resources</b>			<b>Host Party regulations assessment<sup>13</sup></b>	<b>Generic assessment<sup>14</sup></b>
	habitats of endangered species?			
<b>AGO3.2.5</b>	Does a proposed A6.4 activity pose a risk of introducing any alien species into new environments?	<input type="checkbox"/> <b>Yes</b> <input type="checkbox"/> <b>Potentially</b> <input type="checkbox"/> <b>No</b> <input type="checkbox"/> <b>N/A</b>		
<b>AGO3.2.6</b>	Does the proposed A6.4 activity have a risk of spreading alien species, already established in the country or region of the proposed activity, into areas in which they have not already been established?	<input type="checkbox"/> <b>Yes</b> <input type="checkbox"/> <b>Potentially</b> <input type="checkbox"/> <b>No</b> <input type="checkbox"/> <b>N/A</b>		
<b>AGO3.2.7</b>	Has the activity participants identified any risk while exercising diligence to avoid the spread of alien species into areas where they are not already established?	<input type="checkbox"/> <b>Yes</b> <input type="checkbox"/> <b>Potentially</b> <input type="checkbox"/> <b>No</b> <input type="checkbox"/> <b>N/A</b>		
<b>AGO3.3.1</b>	<p>Does the proposed A.6.4 activity pose a risk of negatively impacting critical habitats?</p> <p>If yes or potentially, the activity participants shall demonstrate how the activity meets the three prerequisites described in P3.3.1 above.</p>	<input type="checkbox"/> <b>Yes</b> <input type="checkbox"/> <b>Potentially</b> <input type="checkbox"/> <b>No</b> <input type="checkbox"/> <b>N/A</b>		

<b>Principle 3 Ecology and natural resources</b>	<b>Host Party regulations assessment<sup>13</sup></b>	<b>Generic assessment<sup>14</sup></b>
<b>Conclusion of do-no-harm risk assessment on principle 3 (Ecology and natural resources):</b> If the answer to one of the additional guiding questions is either “Yes” or “Potentially” above, the conclusion of the do-no-harm risk assessment is either “Yes” or “Potentially” accordingly. Under these circumstances, the activity participants are required to prepare mitigation measures under a specific principle’s criteria in the A6.4 Environmental and Social Management plan.		<input type="checkbox"/> Yes <input type="checkbox"/> Potentially <input type="checkbox"/> No <input type="checkbox"/> N/A

### 3. Social safeguards

#### 3.1. Principle 4: Human rights

5. This principle and any criteria are contained in Social and Environmental Safeguards, Section 6.3.1.

**Table 6. Guiding questions for the do-no-harm risk assessment on human rights**

<b>Principle 4 Human rights</b>		<b>Host Party regulations assessment<sup>16</sup></b>	<b>Generic assessment<sup>17</sup></b>
<b>Principle level question: PLQ 4a</b>	Has the activity participants identified any risk that the activity, during its implementation and operation, can undermine national laws and/or international [treaties][law] for the realization of the human rights including the right regarding sustainable development, poverty alleviation and ensuring fair distribution of development opportunities and benefits?	<input type="checkbox"/> Yes <input type="checkbox"/> Potentially <input type="checkbox"/> No <input type="checkbox"/> N/A	

<sup>16</sup> Assessment and conclusion provided by activity participants regarding the proposed activity alignment with host Party regulations.

<sup>17</sup> Conclusions provided by the activity participants in regard to the proposed activity alignment with host party relevant standards, industry best practices or their own voluntary policies [international obligation, standards] [international law] applicable to the proposed activity for transparency and compliance purposes.

<b>Principle 4 Human rights</b>		<b>Host regulations assessment<sup>16</sup></b>	<b>Party assessment<sup>16</sup></b>	<b>Generic assessment<sup>17</sup></b>
	If yes or potentially, please respond to the additional guiding questions AGO4.1-1, AGO4.1-2 & AGO4.1-3.			
<b>PLQ 4b</b>	<p>Has the activity participants identified any actual or potential adverse human rights risk by the proposed A6.4 activity, during the human rights' due diligence?</p> <p>If the answer of this question is either yes or potentially, please identify relevant measures to avoid and mitigate potential adverse human rights impact in environmental and social management plan.</p>	<input type="checkbox"/> <b>Yes</b> <input type="checkbox"/> <b>Potentially</b> <input type="checkbox"/> <b>No</b> <input type="checkbox"/> <b>N/A</b>		
<b>Additional guiding questions:</b>				
<b>AGO4.1-1</b>	Does the proposed A6.4 activity have any adverse impact that undermine the national or regional measures for the realization of the human rights on the enjoyment of the rights (civil, political, economic, social or cultural) of the affected population and particularly of marginalized groups?	<input type="checkbox"/> <b>Yes</b> <input type="checkbox"/> <b>Potentially</b> <input type="checkbox"/> <b>No</b> <input type="checkbox"/> <b>N/A</b>		
<b>AGO4.1-2</b>	Does the proposed A6.4 activity have any risk of leading to inequitable or discriminatory impacts on affected populations,	<input type="checkbox"/> <b>Yes</b> <input type="checkbox"/> <b>Potentially</b> <input type="checkbox"/> <b>No</b> <input type="checkbox"/> <b>N/A</b>		

<b>Principle 4 Human rights</b>			<b>Host regulations assessment<sup>16</sup></b>	<b>Party assessment<sup>17</sup></b>	<b>Generic assessment<sup>17</sup></b>
	particularly people living in poverty, or marginalized or excluded individuals or groups, including persons with disabilities?				
<b>AGO4. 1-3</b>	Does the proposed A6.4 activity-have any risk of causing restrictions in the availability of, quality of and/or access to resources or basic services, in particular for marginalized individuals or groups, including persons with disabilities? <sup>18</sup>	<input type="checkbox"/> <b>Yes</b> <input type="checkbox"/> <b>Potentially</b> <input type="checkbox"/> <b>No</b> <input type="checkbox"/> <b>N/A</b>			
<b>Conclusion of do-no-harm risk assessment on principle 4 (Human rights):</b> If the answer to one of the additional guiding questions is either “Yes” or “Potentially” above, the conclusion of the do-no-harm risk assessment is either “Yes” or “Potentially” accordingly. Under these circumstances, the activity participants are required to prepare mitigation measures under a specific principle’s criteria in the A6.4 Environmental and Social Management plan.					<input type="checkbox"/> <b>Yes</b> <input type="checkbox"/> <b>Potentially</b> <input type="checkbox"/> <b>No</b> <input type="checkbox"/> <b>N/A</b>

### 3.2. Principle 5: Labour

6. This principle and any criteria are contained in Social and Environmental Safeguards, Section 6.3.2.

**Table 7. Guiding questions for the do-no-harm risk assessment on labour**

<b>Principle 5 Labour</b>			<b>Host regulations assessment<sup>19</sup></b>	<b>Party assessment<sup>20</sup></b>	<b>Generic assessment<sup>20</sup></b>
<i>Principle level</i>	Haves the activity participants	<input type="checkbox"/> <b>Yes</b>			

<sup>18</sup> See also criterion P1.2: Energy in relation to accessing the electricity and avoidance of curtailment and/or diversion of renewable electricity.

<sup>19</sup> Assessment and conclusion provided by activity participants regarding the proposed activity alignment with host Party regulations.

<sup>20</sup> Conclusions provided by the activity participants in regard to the proposed activity alignment with host party relevant standards, industry best practices or their own voluntary policies [international obligation, standards] [international law] applicable to the proposed activity for transparency and compliance purposes.

<b>Principle 5 Labour</b>			<b>Host regulations assessment<sup>19</sup></b>	<b>Party assessment<sup>20</sup></b>
<b>question:</b> <b>PLQ5</b>	<p>identified any risk in promoting safe and healthy labour and working conditions according to the host party regulatory requirements applicable to the proposed activity?</p> <p>If yes or potentially, please respond to the additional guiding questions</p>	<input type="checkbox"/> <b>Potentially</b> <input type="checkbox"/> <b>No</b> <input type="checkbox"/> <b>N/A</b>		
<b>Additional guiding question:</b>				
<b>AGQ 5.1</b>	<p>Does the proposed A6.4 activity have any risk that could compromise the promotion of education programmes for local communities to access labour opportunities created by the proposed activity?</p>	<input type="checkbox"/> <b>Yes</b> <input type="checkbox"/> <b>Potentially</b> <input type="checkbox"/> <b>No</b> <input type="checkbox"/> <b>N/A</b>		
<b>AGQ 5.2</b>	<p>Does the proposed A6.4 activity have any risk that could compromise the promotion of the fair treatment, non-discrimination and equal opportunity of activity workers?</p>	<input type="checkbox"/> <b>Yes</b> <input type="checkbox"/> <b>Potentially</b> <input type="checkbox"/> <b>No</b> <input type="checkbox"/> <b>N/A</b>		
<b>AGQ 5.3</b>	<p>Does the proposed A6.4 activity have any risk of protecting activity workers, including vulnerable workers such as women, persons with</p>	<input type="checkbox"/> <b>Yes</b> <input type="checkbox"/> <b>Potentially</b> <input type="checkbox"/> <b>No</b> <input type="checkbox"/> <b>N/A</b>		

<b>Principle 5 Labour</b>		<b>Host Party regulations assessment<sup>19</sup> Generic assessment<sup>20</sup></b>		
	disabilities and migrant workers, contracted workers, community workers, and primary supply workers, as appropriate?			
<b>AGQ 5.4</b>	Does the proposed A6.4 activity have a risk of using forms of forced labour and child labour?	<input type="checkbox"/> <b>Yes</b> <input type="checkbox"/> <b>Potentially</b> <input type="checkbox"/> <b>No</b> <input type="checkbox"/> <b>N/A</b>		
<b>AGQ 5.5</b>	Does the proposed A6.4 activity have any risk of supporting the principles of freedom of association and collective bargaining of activity workers in a manner consistent with national law?	<input type="checkbox"/> <b>Yes</b> <input type="checkbox"/> <b>Potentially</b> <input type="checkbox"/> <b>No</b> <input type="checkbox"/> <b>N/A</b>		
<b>AGQ 5.6</b>	Does the proposed A6.4 activity have any risk of providing activity workers with accessible means to raise workplace concerns.?	<input type="checkbox"/> <b>Yes</b> <input type="checkbox"/> <b>Potentially</b> <input type="checkbox"/> <b>No</b> <input type="checkbox"/> <b>N/A</b>		
<b>AGQ 5.7</b>	Does the proposed A6.4 activity pose risks inherent to the nature of their work/sector, including, but not limited to, physical, chemical, biological and radiological hazards, and	<input type="checkbox"/> <b>Yes</b> <input type="checkbox"/> <b>Potentially</b> <input type="checkbox"/> <b>No</b> <input type="checkbox"/> <b>N/A</b>		



<b>Principle 5 Labour</b>		<b>Host Party regulations assessment<sup>19</sup></b>	<b>Generic assessment<sup>20</sup></b>
	specific threats to women?		
<b>Conclusion of do-no-harm risk assessment on principle 5 (Labour):</b> If the answer to one of the additional guiding questions is either “Yes” or “Potentially” above, the conclusion of the do-no-harm risk assessment is either “Yes” or “Potentially” accordingly. Under these circumstances, the activity participants are required to prepare mitigation measures under a specific principle’s criteria in the A6.4 Environmental and Social Management plan.			<input type="checkbox"/> Yes <input type="checkbox"/> Potentially <input type="checkbox"/> No <input type="checkbox"/> N/A

### 3.3. Principle 6: Health and safety

7. This principle and any criteria are contained in Social and Environmental Safeguards, Section 6.3.3.

**Table 8. Guiding questions for the do-no-harm risk assessment on health and safety**

<b>Principle 6 Health and safety</b>		<b>Host Party regulations assessment<sup>21</sup></b>	<b>Generic assessment<sup>22</sup></b>
<b>Principle level question: PLQ6</b>	Has the activity participants identified any activity risks to and impacts on the health and safety of the affected communities, including those who, because of their circumstances, may be vulnerable, as per host party regulatory requirements applicable to the proposed activity? <sup>23</sup>	<input type="checkbox"/> Yes <input type="checkbox"/> Potentially <input type="checkbox"/> No <input type="checkbox"/> N/A	

<sup>21</sup> Assessment and conclusion provided by activity participants regarding the proposed activity alignment with host Party regulations.

<sup>22</sup> Conclusions provided by the activity participants in regard to the proposed activity alignment with host party relevant standards, industry best practices or their own voluntary policies [international obligation, standards] [international law] applicable to the proposed activity for transparency and compliance purposes.

<sup>23</sup> This shall include respiratory risks to local communities posed by A6.4 CO<sub>2</sub> removal activities that involve the application of materials to land (e.g. incidental airborne release of fine particulate matter).

<b>Principle 6 Health and safety</b>		<b>Host regulations assessment<sup>21</sup></b>	<b>Party assessment<sup>22</sup></b>	<b>Generic assessment<sup>22</sup></b>
	If yes or potentially, please respond to the additional guiding questions			
<b>Additional guiding question:</b>				
<b>AGQ 6.1-1</b>	Have the activity participants considered the risks and impacts of the activity on the health and safety of the affected communities during the activity crediting period, including those who, because of their circumstances, may be vulnerable, as per host party regulatory requirements applicable to the proposed activity?			
<b>AGQ 6.1-2</b>	Have the activity participants identified any health and/or safety risk related to the implementation and/or infrastructure development (e.g. roads, buildings, dams) of the proposed activity?	<input type="checkbox"/> <b>Yes</b> <input type="checkbox"/> <b>Potentially</b> <input type="checkbox"/> <b>No</b> <input type="checkbox"/> <b>N/A</b>		
<b>AGQ 6.1-3</b>	Have the activity participants identified any risk related to air pollution, noise, vibration, traffic, injuries, physical hazards, poor surface water quality due to runoff, erosion, or	<input type="checkbox"/> <b>Yes</b> <input type="checkbox"/> <b>Potentially</b> <input type="checkbox"/> <b>No</b> <input type="checkbox"/> <b>N/A</b>		

<b>Principle 6 Health and safety</b>		<b>Host regulations assessment<sup>21</sup></b>	<b>Party assessment<sup>21</sup></b>	<b>Generic assessment<sup>22</sup></b>
	sanitation exceeding the limits established by relevant host party regulation or industrial best practices?			
<b>AGQ 6.1-4</b>	Has the activity participants identified any risk related to harm or losses due to the failure of structural elements of the activity (e.g. collapse of buildings or infrastructure)? <sup>24</sup>	<input type="checkbox"/> <b>Yes</b> <input type="checkbox"/> <b>Potentially</b> <input type="checkbox"/> <b>No</b> <input type="checkbox"/> <b>N/A</b>		
<b>AGQ 6.1-5</b>	Has the activity participants identified any risk related to water-borne or other vector-borne diseases (e.g. temporary breeding habitats), communicable and noncommunicable diseases, nutritional disorders, mental health including gender-based violence?	<input type="checkbox"/> <b>Yes</b> <input type="checkbox"/> <b>Potentially</b> <input type="checkbox"/> <b>No</b> <input type="checkbox"/> <b>N/A</b>		
<b>AGQ 6.1-6</b>	Has the activity participants identified any risk related to transport, storage, and use and/or disposal of hazardous or dangerous materials (e.g. explosives, fuel and other chemicals during	<input type="checkbox"/> <b>Yes</b> <input type="checkbox"/> <b>Potentially</b> <input type="checkbox"/> <b>No</b> <input type="checkbox"/> <b>N/A</b>		

<sup>24</sup> For A6.4 activities involving the capture, transport and storage of CO<sub>2</sub>, this shall include CO<sub>2</sub> transport infrastructure and injection wellbores.

<b>Principle 6 Health and safety</b>		<b>Host regulations assessment<sup>21</sup></b>	<b>Party assessment<sup>22</sup></b>	<b>Generic assessment<sup>22</sup></b>
	construction implementation and operation)? <sup>25</sup>			
<b>AGQ 6.1-7</b>	Has the activity participants identified any risk related to adverse impacts on ecosystems and ecosystem services relevant to communities' health (e.g. food, surface water purification, natural buffers from flooding)?	<input type="checkbox"/> <b>Yes</b> <input type="checkbox"/> <b>Potentially</b> <input type="checkbox"/> <b>No</b> <input type="checkbox"/> <b>N/A</b>		
<b>AGQ 6.2</b>	Has the activity participants identified any health and/or safety risks to communities that can result into accidents or incidents that require mitigation measures in accordance with national legal requirements, including the emergency preparedness and response plans as appropriate?	<input type="checkbox"/> <b>Yes</b> <input type="checkbox"/> <b>Potentially</b> <input type="checkbox"/> <b>No</b> <input type="checkbox"/> <b>N/A</b>		
<b>AGQ 6.3</b>	Have the activity participants identified any health and/or safety risk exposure of women and men, as well as marginalized and disadvantaged groups, including children, older persons, persons	<input type="checkbox"/> <b>Yes</b> <input type="checkbox"/> <b>Potentially</b> <input type="checkbox"/> <b>No</b> <input type="checkbox"/> <b>N/A</b>		

<sup>25</sup> This shall include A6.4 activities involving the transport and storage of CO<sub>2</sub>.

<b>Principle 6 Health and safety</b>			<b>Host Party regulations assessment<sup>21</sup></b>	<b>Generic assessment<sup>22</sup></b>
	with disabilities, minorities, and Indigenous Peoples?			
<b>Conclusion on do-no-harm risk assessment on principle 6 (Health and safety):</b> If the answer to one of the additional guiding questions is either “Yes” or “Potentially” above, the conclusion of the do-no-harm risk assessment is either “Yes” or “Potentially” accordingly. Under these circumstances, the activity participants are required to prepare mitigation measures under a specific principle’s criteria in the A6.4 Environmental and Social Management plan.				<input type="checkbox"/> Yes <input type="checkbox"/> Potentially <input type="checkbox"/> No <input type="checkbox"/> N/A

### 3.4. Principle 7: Gender equality

8. This principle and any criteria are contained in Social and Environmental Safeguards, Section 6.3.4.

**Table 9. Guiding questions for the do-no-harm risk assessment on gender equality**

<b>Principle 7 Gender equality</b>			<b>Host Party regulations assessment<sup>26</sup></b>	<b>Generic assessment<sup>27</sup></b>
<b>Principle level question: PLQ7</b>	Have the activity participants identified potential gender-based risks and impacts that reinforce pre-existing inequalities and/or create new ones?  If yes or potentially, please respond to the additional guiding questions.	<input type="checkbox"/> Yes <input type="checkbox"/> Potentially <input type="checkbox"/> No <input type="checkbox"/> N/A		
<b>Additional guiding question:</b>				
<b>AGQ 7.1-1</b>	Does the proposed A6.4 activity have any adverse impacts on gender equality and/or the situation of women and girls?	<input type="checkbox"/> Yes <input type="checkbox"/> Potentially <input type="checkbox"/> No <input type="checkbox"/> N/A		

<sup>26</sup> Assessment and conclusion provided by activity participants regarding the proposed activity alignment with host Party regulations.

<sup>27</sup> Conclusions provided by the activity participants in regard to the proposed activity alignment with host party relevant standards, industry best practices or their own voluntary policies [international obligation, standards] [international law] applicable to the proposed activity for transparency and compliance purposes.

<b>Principle 7 Gender equality</b>			<b>Host Party regulations assessment<sup>26</sup></b>	<b>Generic assessment<sup>27</sup></b>
<b>AGQ 7.1-2</b>	Does the proposed A6.4 activity have any of exacerbating of risks of gender-based violence (for example, through the influx of workers to a community, changes in community and household power dynamics, increased exposure to unsafe public places and/or transport, etc.)?	<input type="checkbox"/> <b>Yes</b> <input type="checkbox"/> <b>Potentially</b> <input type="checkbox"/> <b>No</b> <input type="checkbox"/> <b>N/A</b>		
<b>AGQ 7.2-1</b>	Does the proposed A6.4 activity pose a risk to the principle of non-discrimination, equal treatment and, equal pay for equal work? (Including e.g. equal payment for women and men for the implementation work of the activity; fair conditions for women and men to participate in the implementation of the activity considering pregnancy/maternity/paternity leave/marital status; inform the community (women and men) about the implementation of the activity in an accessible manner to ensure full engagement, including access to leadership positions).	<input type="checkbox"/> <b>Yes</b> <input type="checkbox"/> <b>Potentially</b> <input type="checkbox"/> <b>No</b> <input type="checkbox"/> <b>N/A</b>		
<b>AGQ 7.2-2</b>	Does the proposed A6.4 activity have any risk of preventing men and women from having equal opportunities to participate in identified tasks and activities, whether through paid work, volunteer work, or community contributions, as appropriate?	<input type="checkbox"/> <b>Yes</b> <input type="checkbox"/> <b>Potentially</b> <input type="checkbox"/> <b>No</b> <input type="checkbox"/> <b>N/A</b>		
<b>AGQ 7.2-3</b>	Does the proposed A6.4 activity have any risk of limiting the participation of women or men in the	<input type="checkbox"/> <b>Yes</b> <input type="checkbox"/> <b>Potentially</b> <input type="checkbox"/> <b>No</b>		

<b>Principle 7 Gender equality</b>			<b>Host Party regulations assessment<sup>26</sup></b>	<b>Generic assessment<sup>27</sup></b>
	workplace based on pregnancy, maternity/paternity leave, or marital status?	<input type="checkbox"/> <b>N/A</b>		
<b>AGQ 7.2-4</b>	Does the proposed A6.4 activity have any risk of reproducing discriminations against persons based on gender, in particular participation in the design and implementation or access to opportunities and benefits.	<input type="checkbox"/> <b>Yes</b> <input type="checkbox"/> <b>Potentially</b> <input type="checkbox"/> <b>No</b> <input type="checkbox"/> <b>N/A</b>		
<b>AGQ 7.2-5</b>	Does the proposed A6.4 activity have a risk of limiting women's ability to use, develop and protect natural resources, considering the different roles and positions of women and men in accessing environmental goods and services? (for example, activities that could lead to natural resources degradation or depletion in communities who depend on these resources for their livelihoods and well-being).	<input type="checkbox"/> <b>Yes</b> <input type="checkbox"/> <b>Potentially</b> <input type="checkbox"/> <b>No</b> <input type="checkbox"/> <b>N/A</b>		
<b>Conclusion of do-no-harm risk assessment on principle 7 (Gender equality):</b> If the answer to one of the additional guiding questions is either "Yes" or "Potentially" above, the conclusion of the do-no-harm risk assessment is either "Yes" or "Potentially" accordingly. Under these circumstances, the activity participants are required to prepare mitigation measures under a specific principle's criteria in the A6.4 Environmental and Social Management plan.				<input type="checkbox"/> <b>Yes</b> <input type="checkbox"/> <b>Potentially</b> <input type="checkbox"/> <b>No</b> <input type="checkbox"/> <b>N/A</b>

### 3.5. **Principle 8: Land acquisition and involuntary resettlement<sup>28</sup>**

9. This principle and any criteria are contained in Social and Environmental Safeguards, Section 6.3.5.

<sup>28</sup> Involuntary resettlement refers to a scenario when affected persons or communities do not have the right to refuse land acquisition or restrictions on land use that result in displacement.

**Table 10. Guiding questions for the do-no-harm risk assessment on land acquisition and involuntary resettlement**

<b>Principle 8 Land acquisition and involuntary resettlement</b>			<b>Host Party regulations assessment<sup>29</sup></b>	<b>Generic risk assessment<sup>30</sup></b>
<b>Principle level question: PLQ8</b>	Does the proposed A6.4 activity involve or support involuntary land acquisition or restrictions on land use that may cause physical displacement economic displacement or both?  <i>If yes or potentially, please respond the additional guiding questions</i>	<input type="checkbox"/> <b>Yes</b> <input type="checkbox"/> <b>Potentially</b> <input type="checkbox"/> <b>No</b> <input type="checkbox"/> <b>N/A</b>		
<b>Additional guiding question:</b>				
<b>AGQ 8.1</b>	Does the proposed A6.4 activity have risks of forced evictions or involuntary relocation of people?	<input type="checkbox"/> <b>Yes</b> <input type="checkbox"/> <b>Potentially</b> <input type="checkbox"/> <b>No</b> <input type="checkbox"/> <b>N/A</b>		

<sup>29</sup> Assessment and conclusion provided by activity participants regarding the proposed activity alignment with host Party regulations.

<sup>30</sup> Conclusions provided by the activity participants in regard to the proposed activity alignment with host party relevant standards, industry best practices or their own voluntary policies [international obligation, standards] [international law] applicable to the proposed activity for transparency and compliance purposes.



Principle 8 Land acquisition and involuntary resettlement		Host regulations assessment <sup>29</sup>	Party assessment <sup>29</sup>	Generic risk assessment <sup>30</sup>
<b>AGQ 8.2-1</b>	<p>Have the proposed activity participants identified any risks to displaced persons and host communities when physical displacement (i.e. relocation or loss of shelter) cannot be avoided</p> <p>(If applicable), Has the proposed A6.4 activity developed a resettlement action plan and/or livelihood action plan in consultation and agreement with affected individuals, groups or communities, as per host party regulations?</p>	<input type="checkbox"/> Yes <input type="checkbox"/> Potentially <input type="checkbox"/> No <input type="checkbox"/> N/A		
<b>AGQ 8.2-2</b>	Does the proposed A6.4 activity have any risk of restoring livelihoods and/or living standards, to at least pre-project levels for displaced persons?	<input type="checkbox"/> Yes <input type="checkbox"/> Potentially <input type="checkbox"/> No <input type="checkbox"/> N/A		

Principle 8 Land acquisition and involuntary resettlement			Host Party regulations assessment <sup>29</sup>	Generic risk assessment <sup>30</sup>
<b>AGQ 8.3</b>	<p>Have the activity participants identified any risks of economic displacement (i.e. loss of land or assets, or loss of access to assets, leading to loss of income sources or other means of livelihood)?</p> <p>(If applicable) Have the activity participants considered the impacts and risks of economic displacement in the resettlement action plan and in consultation and agreement with affected individuals, groups or communities, as per host party regulations?</p>	<input type="checkbox"/> Yes <input type="checkbox"/> Potentially <input type="checkbox"/> No <input type="checkbox"/> N/A		
<b>AGQ 8.4</b>	<p>Have the activity participants identified any risk in conducting full consultation with the affected individual, group or community and consider good faith negotiations and reflecting resettlement understandings reached in written agreements?</p>	<input type="checkbox"/> Yes <input type="checkbox"/> Potentially <input type="checkbox"/> No <input type="checkbox"/> N/A		

<b>Principle 8 Land acquisition and involuntary resettlement</b>	<b>Host Party regulations assessment<sup>29</sup></b>	<b>Generic risk assessment<sup>30</sup></b>
<b>Conclusion of do-no-harm risk assessment on principle 8 (Land acquisition and involuntary resettlement):</b>  If the answer to one of the additional guiding questions is either “Yes” or “Potentially” above, the conclusion of the do-no-harm risk assessment is either “Yes” or “Potentially” accordingly. Under these circumstances, the activity participants are required to prepare mitigation measures under a specific principle’s criteria in the A6.4 Environmental and Social Management plan.		<input type="checkbox"/> Yes <input type="checkbox"/> Potentially <input type="checkbox"/> No <input type="checkbox"/> N/A

### 3.6. Principle 9: Indigenous Peoples

10. This principle and any criteria are contained in Social and Environmental Safeguards, Section 6.3.6.

**Table 11. Guiding questions for the do-no-harm risk assessment on Indigenous Peoples**

<b>P 9 Indigenous Peoples</b>		<b>Host Party regulations assessment<sup>31</sup></b>	<b>Generic assessment<sup>32</sup></b>
<b>Principle level question: PLQ9</b>	Does the proposed A6.4 activity involve Indigenous Peoples within the activity area of influence who may be affected directly or indirectly by the activity?  <i>If yes or potentially, please respond to the additional guiding questions</i>	<input type="checkbox"/> Yes <input type="checkbox"/> Potentially <input type="checkbox"/> No <input type="checkbox"/> N/A	
<b>Additional guiding question:</b>			
<b>AGQ 9.1</b>	Does the proposed A6.4 activity pose risks in areas where Indigenous Peoples are present (including	<input type="checkbox"/> Yes <input type="checkbox"/> Potentially <input type="checkbox"/> No <input type="checkbox"/> N/A	

<sup>31</sup> Assessment and conclusion provided by activity participants regarding the proposed activity alignment with host Party regulations.

<sup>32</sup> Conclusions provided by the activity participants in regard to the proposed activity alignment with host party relevant standards, industry best practices or their own voluntary policies [international obligation, standards] [international law] applicable to the proposed activity for transparency and compliance purposes.

<b>P 9 Indigenous Peoples</b>			<b>Host Party regulations assessment<sup>31</sup></b>	<b>Generic assessment<sup>32</sup></b>
	activity area of influence)?			
<b>AGQ 9.2-1</b>	Does the proposed A6.4 activity have risk to areas, land and territory claimed by Indigenous Peoples?	<input type="checkbox"/> <b>Yes</b> <input type="checkbox"/> <b>Potentially</b> <input type="checkbox"/> <b>No</b> <input type="checkbox"/> <b>N/A</b>		
<b>AGQ 9.2-2</b>	<p>Does the proposed A6.4 activity pose risks to the rights, lands, natural resources territories and traditional livelihoods of Indigenous Peoples?</p> <p>- (if applicable) Has an environmental and social analysis of the activities that may affect or involve Indigenous Peoples been elaborated with the effective and meaningful participation of Indigenous Peoples (by completing the A6.4 Environmental and Social Safeguards Risk Assessment Form) and was it included in the activity documentation?</p> <p>- (if applicable), Did the activity obtain free, prior and informed consent from the Indigenous Peoples before using their cultural, intellectual, religious, and/or spiritual property?</p>	<input type="checkbox"/> <b>Yes</b> <input type="checkbox"/> <b>No</b> <input type="checkbox"/> <b>Potentially</b> <input type="checkbox"/> <b>N/A</b>		

<b>P 9 Indigenous Peoples</b>			<b>Host Party regulations assessment<sup>31</sup></b>	<b>Generic assessment<sup>32</sup></b>
<b>AGQ 9.3</b>	Does the proposed A6.4 activity have a risk of forcibly removing Indigenous Peoples from their lands and territories?	<input type="checkbox"/> <b>Yes</b> <input type="checkbox"/> <b>Potentially</b> <input type="checkbox"/> <b>No</b> <input type="checkbox"/> <b>N/A</b>		
<b>AGQ 9.4</b>	Does the proposed A6.4 activity have any risks with regard to recognizing and respecting the Indigenous Peoples' collective rights to own, use, and develop and control the lands, resources and territories that they have traditionally owned, occupied or otherwise used or acquired, including lands and territories for which they do not yet possess title?	<input type="checkbox"/> <b>Yes</b> <input type="checkbox"/> <b>Potentially</b> <input type="checkbox"/> <b>No</b> <input type="checkbox"/> <b>N/A</b>		
<b>AGQ 9.5</b>	Does the proposed A6.4 activity pose any risk of utilizing cultural, intellectual, religious and/or spiritual property of Indigenous Peoples without FPIC??	<input type="checkbox"/> <b>Yes</b> <input type="checkbox"/> <b>Potentially</b> <input type="checkbox"/> <b>No</b> <input type="checkbox"/> <b>N/A</b>		
<b>AGQ 9.6-1</b>	<p>Does the proposed A6.4 activity pose risks of utilization and/or commercial development of natural resources on lands and territories claimed by Indigenous Peoples?</p> <p>(Consider and, where appropriate, ensure consistency with principle 8)</p>	<input type="checkbox"/> <b>Yes</b> <input type="checkbox"/> <b>Potentially</b> <input type="checkbox"/> <b>No</b> <input type="checkbox"/> <b>N/A</b>		

<b>P 9 Indigenous Peoples</b>		<b>Host regulations assessment<sup>31</sup></b>	<b>Party assessment<sup>32</sup></b>	<b>Generic assessment<sup>32</sup></b>
<b>AGQ 9.6-2</b>	<p>Does the proposed A6.4 activity have risks of the Indigenous Peoples receiving an equitable sharing of benefits resulting from the use of their traditional knowledge and practices?</p> <p>- Does the proposed A6.4 activity have risks of ensuring that the sharing of benefits resulting from a good-faith negotiated agreement regarding the appropriate use of Indigenous Peoples' traditional knowledge and practices is culturally appropriate and inclusive?</p> <p>- Does the proposed A6.4 activity have risks of ensuring that the agreement provisions regarding equitable sharing of benefits does not impede land rights or equal access to basic services, including health services, clean water, energy, education, safe and decent working conditions, and housing?</p>	<input type="checkbox"/> <b>Yes</b> <input type="checkbox"/> <b>No</b> <input type="checkbox"/> <b>Potentially</b> <input type="checkbox"/> <b>N/A</b>		

<b>P 9 Indigenous Peoples</b>	<b>Host Party regulations assessment<sup>31</sup></b>	<b>Generic assessment<sup>32</sup></b>
<b>Conclusion of do-no-harm risk assessment on principle 9 (Indigenous Peoples):</b>  If the answer to one of the additional guiding questions is either “Yes” or “Potentially” above, the conclusion of the do-no-harm risk assessment is either “Yes” or “Potentially” accordingly. Under these circumstances, the activity participants are required to prepare mitigation measures under a specific principle’s criteria in the A6.4 Environmental and Social Management plan.		<input type="checkbox"/> Yes <input type="checkbox"/> Potentially <input type="checkbox"/> No <input type="checkbox"/> N/A

### 3.7. Principle 10: Corruption

11. This principle and any criteria are contained in Social and Environmental Safeguards, Section 6.3.7.

**Table 12. Guiding questions for the do-no-harm risk assessment on corruption**

<b>P 10 Corruption</b>		<b>Host Party regulations assessment<sup>33</sup></b>	<b>Generic risk assessment<sup>34</sup></b>
<b>Principle level question: PLQ10</b>	Has the activity participants provided a declaration that the proposed A6.4 activity in its development, implementation and operation shall not involve any illegal activities, including money laundering, tax evasion, fraud, bribery and criminal activities	<input type="checkbox"/> Yes <input type="checkbox"/> No	
<b>Conclusion of the do-no-harm risk assessment on principle 10 (Corruption):</b>  If the answer to the principle level question is "No", it indicates potential risk and is not in accordance with the activity standard and the activity cycle procedure for projects, the DOE shall issue a negative validation opinion as per the the validation and verification standard for projects.			<input type="checkbox"/> Yes <input type="checkbox"/> No

<sup>33</sup> Assessment and conclusion provided by activity participants regarding the proposed activity alignment with host Party regulations.

<sup>34</sup> Conclusions provided by the activity participants in regard to the proposed activity alignment with host party relevant standards, industry best practices or their own voluntary policies [international obligation, standards] [international law] applicable to the proposed activity for transparency and compliance purposes.

### 3.8. Principle 11: Cultural heritage<sup>35</sup>

12. This principle and any criteria are contained in Social and Environmental Safeguards, Section 6.3.8.

**Table 13. Guiding questions for the do-no-harm risk assessment on cultural heritage**

<b>P 11 Cultural heritage</b>			<b>Host Party regulations assessment<sup>36</sup></b>	<b>Generic assessment<sup>37</sup></b>
<b>Principle level question: PLQ11a</b>	Does the proposed A6.4 activity involve altering, damaging or removing sites, objects, or structures of significant cultural heritage? (If yes or potentially, please respond to additional guiding questions AGO11.1, AGO11.2-1, AGO11.2-2 & AGO11.2-3)	<input type="checkbox"/> <b>Yes</b> <input type="checkbox"/> <b>Potentially</b> <input type="checkbox"/> <b>No</b> <input type="checkbox"/> <b>N/A</b>		
<b>Principle level question: PLQ11b</b>	Does the proposed A6.4 activity involve usage or partial usage of sites, objects or structures of significant cultural heritage? (If yes or potentially, please respond to additional guiding questions related to AGO11.3-1, AGO11.3-2, AGO11.3-3, AGO11.3-4 & AGO11.3-5)	<input type="checkbox"/> <b>Yes</b> <input type="checkbox"/> <b>Potentially</b> <input type="checkbox"/> <b>No</b> <input type="checkbox"/> <b>N/A</b>		

<sup>35</sup> Cultural heritage provides continuity in tangible and intangible forms between the past, present and future. People identify with cultural heritage as a reflection and expression of their constantly evolving values, beliefs, knowledge and traditions. Cultural heritage, in its many manifestations, is important as a source of valuable scientific and historical information, as an economic and social asset for development, and as an integral part of people's cultural identity and practice.

<sup>36</sup> Assessment and conclusion provided by activity participants regarding the proposed activity alignment with host Party regulations.

<sup>37</sup> Conclusions provided by the activity participants in regard to the proposed activity alignment with host party relevant standards, industry best practices or their own voluntary policies [international obligation, standards] [international law] applicable to the proposed activity for transparency and compliance purposes.



<b>P 11 Cultural heritage</b>		<b>Host regulations assessment<sup>36</sup></b>	<b>Party assessment<sup>36</sup></b>	<b>Generic assessment<sup>37</sup></b>
<b>Additional guiding question:</b>				
AGQ 11.1	Does the A6.4 activity have a risk of alteration, damage or removal of any sites, objects or structures of critical cultural heritage?	<input type="checkbox"/> <b>Yes</b> <input type="checkbox"/> <input type="checkbox"/> <b>Potentially</b> <input type="checkbox"/> <b>No</b> <input type="checkbox"/> <b>N/A</b>		
AGQ 11.2-1	Does the proposed A6.4 activity have a risk of significant excavations, demolitions, movement of earth, flooding or other environmental changes?	<input type="checkbox"/> <b>Yes</b> <input type="checkbox"/> <input type="checkbox"/> <b>Potentially</b> <input type="checkbox"/> <b>No</b> <input type="checkbox"/> <b>N/A</b>		
AGQ 11.2-2	Does the proposed A6.4 activity have a risk of alterations to landscapes and natural features with cultural significance?	<input type="checkbox"/> <b>Yes</b> <input type="checkbox"/> <input type="checkbox"/> <b>Potentially</b> <input type="checkbox"/> <b>No</b> <input type="checkbox"/> <b>N/A</b>		
AGQ 11.2-3	Does the proposed A6.4 activity have a risk of adverse impacts to sites, structures, or objects with historical, cultural, artistic, traditional or religious values or intangible forms of culture (e.g. knowledge, innovations, practices)? Note: Activities intended to protect and conserve cultural heritage may also have inadvertent adverse impacts.	<input type="checkbox"/> <b>Yes</b> <input type="checkbox"/> <input type="checkbox"/> <b>Potentially</b> <input type="checkbox"/> <b>No</b> <input type="checkbox"/> <b>N/A</b>		
AGQ 11.3-1	Does the proposed A6.4 activity have a risk of utilization of tangible and/or intangible forms (e.g. practices, traditional knowledge) of cultural heritage	<input type="checkbox"/> <b>Yes</b> <input type="checkbox"/> <input type="checkbox"/> <b>Potentially</b> <input type="checkbox"/> <b>No</b> <input type="checkbox"/> <b>N/A</b>		

<b>P 11 Cultural heritage</b>			<b>Host Party regulations assessment<sup>36</sup></b>	<b>Generic assessment<sup>37</sup></b>
	<p>for commercial or other purposes?</p> <p>If the answer to the question above is “YES” or “POTENTIALLY”, are the communities made aware of their rights under the law, the scope and nature of the proposed development, and its potential consequences?</p>			
AGQ 11.3-2	<p>Does the proposed A6.4 activity have a risk of providing equitable sharing of benefits from the commercialization of such knowledge, innovations, or practices in a way that is consistent with their customs and traditions?</p>	<input type="checkbox"/> <b>Yes</b> <input type="checkbox"/> <b>Potentially</b> <input type="checkbox"/> <b>No</b> <input type="checkbox"/> <b>N/A</b>		
AGQ 11.3-3	<p>Does the activity participants have not changed, modified and updated the activity design considering the opinions and recommendations of competent professionals recognized by the host party-government?</p>	<input type="checkbox"/> <b>Yes</b> <input type="checkbox"/> <b>Potentially</b> <input type="checkbox"/> <b>No</b> <input type="checkbox"/> <b>N/A</b>		
AGQ 11.3-4	<p>Does the proposed A6.4 activity involve any risks related to the involuntary relocation of people?  If yes, please complete the resettlement section under principle 5.</p>	<input type="checkbox"/> <b>Yes</b> <input type="checkbox"/> <b>Potentially</b> <input type="checkbox"/> <b>No</b> <input type="checkbox"/> <b>N/A</b>		

<b>P 11 Cultural heritage</b>			<b>Host Party regulations assessment<sup>36</sup></b>	<b>Generic assessment<sup>37</sup></b>
<b>AGQ 11.3-5</b>	Does the proposed A6.4 activity involve any risks related to identifying and managing legitimate tenure rights that may be affected by the activity?  If yes, please complete the land acquisition section under principle 5.	<input type="checkbox"/> <b>Yes</b> <input type="checkbox"/> <b>Potentially</b> <input type="checkbox"/> <b>No</b> <input type="checkbox"/> <b>N/A</b>		
<b>Conclusion of the do-no-harm risk assessment on principle 11 (Cultural heritage):</b> If the answer to one of the additional guiding questions is either “Yes” or “Potentially” above, the conclusion of the do-no-harm risk assessment is either “Yes” or “Potentially” accordingly. Under these circumstances, the activity participants are required to prepare mitigation measures under a specific principle’s criteria in the A6.4 Environmental and Social Management plan.				<input type="checkbox"/> <b>Yes</b> <input type="checkbox"/> <b>Potentially</b> <input type="checkbox"/> <b>No</b> <input type="checkbox"/> <b>N/A</b>

-----  
DRAFT  
Document information

Version	Date	Description
08.0	18 July 2024	SBM 013, Annex 5. This clean version includes guidance from Supervisory Body at SBM 013 meeting and will serve as a draft document for the SD Tool informal working group to continue developing until the SBM 014 meeting.
07.0	1 July 2024	Published as an annex to the annotated agenda of SBM 013. This version takes into account guidance provided by the Supervisory Body at SB 011 (SB 011 meeting report, para.20-22), input provided by stakeholders to a call for public (3 – 17 May 2024), as well as input from the SBM informal working group.
05.0	15 April 2024	Published as an annex to the annotated agenda of SB 011. This version takes into account guidance provided by the Supervisory Body at SB 010 (SB 010 meeting report, para. 29-30).
04.0	20 February 2024	Substantive changes made to Appendix 1: paragraph 20, Table 5 & 13 and sub-heading 8.1.7, in addition to several editorial improvements throughout the document.

---

<i>Version</i>	<i>Date</i>	<i>Description</i>
03.0	13 February 2024	Published as an annex to the annotated agenda of SB 010. Takes into account input <a href="#">provided by stakeholders to a call for public input (3 Nov. – 1 Dec. 2023)</a> .
02.0	2 November 2023	Published as an annex to the meeting report of SB 008. This version takes into account the guidance provided by the Supervisory Body at SB 008 (SB 008 meeting report, para 18) and will be published for a call for inputs.
01.0	16 October 2023	Published as an annex to the annotated agenda of SB 008.

---

Decision Class: Regulatory  
Document Type: Tool  
Business Function: A6.4 activity cycle, Methodology  
Keywords: A6.4 mechanism, benefits and incentives, SDG, sustainable development

---

DRAFT