



Multilateral Assessment Czech Republic



**SBI 49, Katowice
December 2018**



National Circumstances



Czech Republic since January 1, 1993
former Czech and Slovak
Federative Republic
(split of Czechoslovakia),

EU Member since May 1, 2004

Area: 78 870 km²

Population (2018): 10 625 449

GDP per capita (2017): 36 350 USD

Currency: Czech Crown (CZK)

cca 22 CZK per USD

cca 25 CZK per EUR

Unemployment rate: 3%



UNFCCC, Kyoto, and Paris Commitments

Ministry of the Environment
of the Czech Republic

Ministry of the Environment
Vrsovicke 65, 100 10 Prague 10
Czech Republic

www.mzp.cz



Joint fulfilment of Convention and CP2 commitments

- ❑ **Pledge under the Convention for EU and its Member States:**
 - Unconditional quantified economy-wide GHG emissions reduction target of 20% by 2020, compared to 1990 levels

- ❑ **Binding commitment under the Kyoto Protocol**
 - CP2: Joint commitment of the EU, its MS and Iceland to reduce average annual emissions during 2013-2020 by 20% compared to 1990.

- ❑ **(I)NDC communicated under the Paris Agreement**
 - The EU and its Member States are committed to a binding target of an at least 40% domestic reduction in greenhouse gas emissions by 2030 compared to 1990.

- ❑ **2020 commitments to be fulfilled jointly by the EU in line with the Climate and Energy Package**



EU Climate and Energy Package

		EU-wide target by 2020 (1990)		National target by 2020	EU-wide target by 2030 (1990)		National target by 2030	EU-wide target by 2050 (1990)
Binding emission reduction target	EU ETS (based on harmonized rules)	-20%	-21% (2005)	2016: -35.2%	-40%	-43% (2005)	-	-80-95%
	EU non-ETS sectors		Country-specific			+9%	-30% (2005)	
Binding share of renewable sources of energy in total final energy consumption target		20%		13% 2016: 14.9%	32%		20.86%	-
Non-binding energy efficiency target		↑20%		51,1 PJ (additional energy savings)	↑32.5%		84,1 PJ (new energy savings)	-



On Track to Meet Its Kyoto Protocol and EU Commitments

- **CZ target for CP1 (2008-2012): - 8%**

- **2016 GHG emissions**
 - excluding LULUCF: 34,69% (69 Mt) decrease against 1990
 - including LULUCF: 35,24% (68 Mt) decrease against 1990

- **2020 projected emissions (excluding LULUCF)**
 - with existing measures: 37.44% decrease against 1990
 - with additional measures: 37.64% decrease against 1990

- **2030 projected emissions (excluding LULUCF)**
 - with existing measures: 44.43% decrease against 1990
 - with additional measures: 44.94% decrease against 1990



Trends

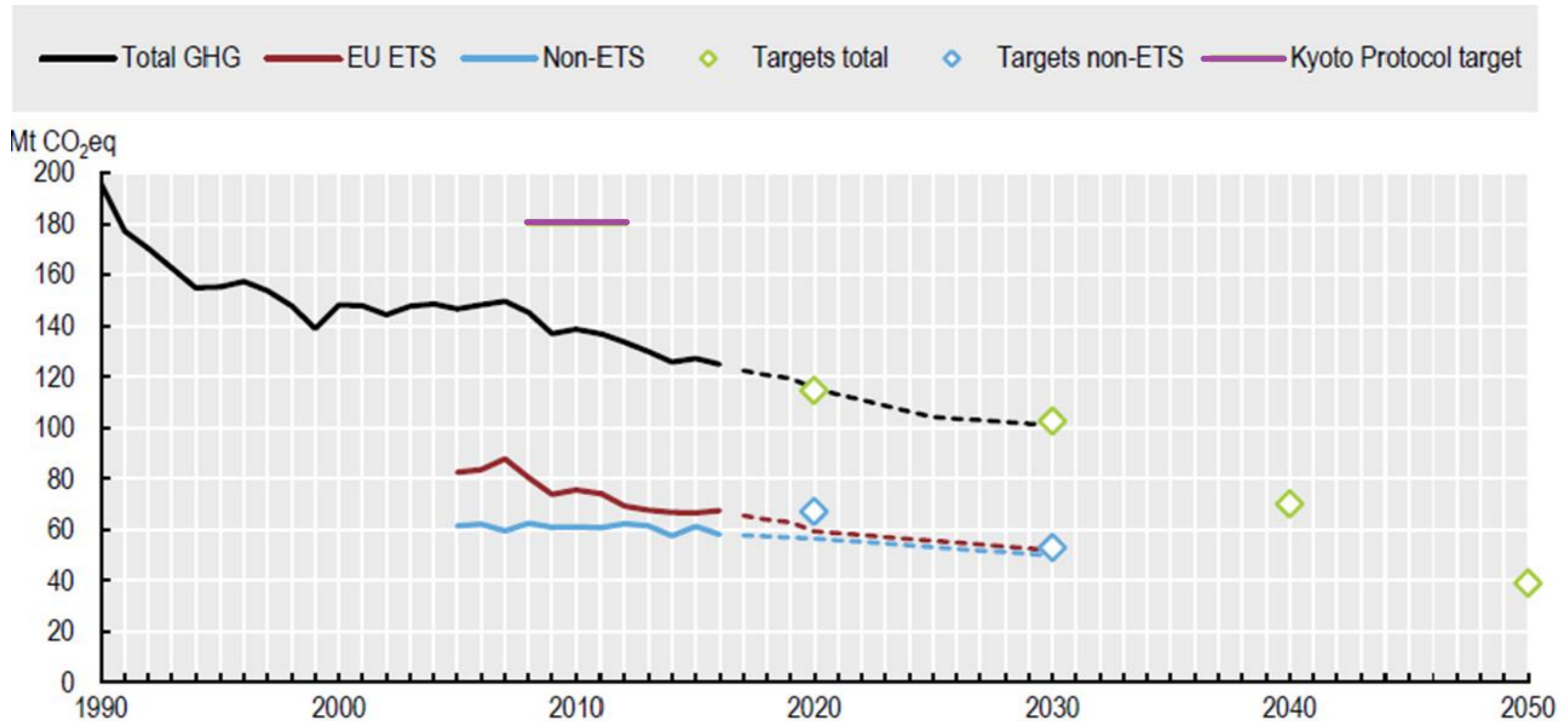
Ministry of the Environment
of the Czech Republic

Ministry of the Environment
Vrsovicke 65, 100 10 Prague 10
Czech Republic

www.mzp.cz



On Track to Meet Its Kyoto Protocol and EU Commitments



Source: OECD Performance Reviews Czech Republic 2018

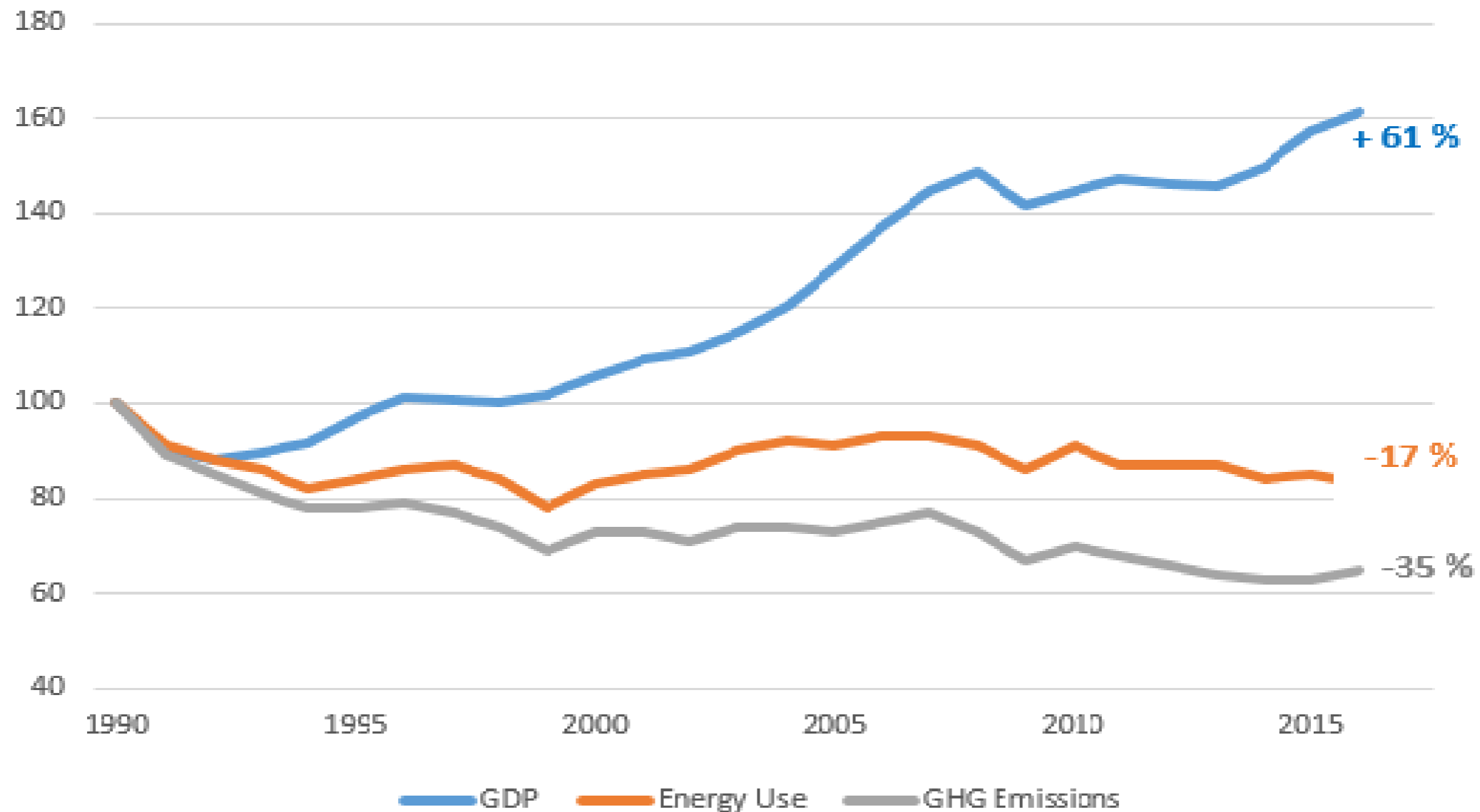
Ministry of the Environment
of the Czech Republic

Ministry of the Environment
Vrsovicke 65, 100 10 Prague 10
Czech Republic

www.mzp.cz



Decoupling from Economic Growth



Source: MoE (Data from Eurostat and CSO)

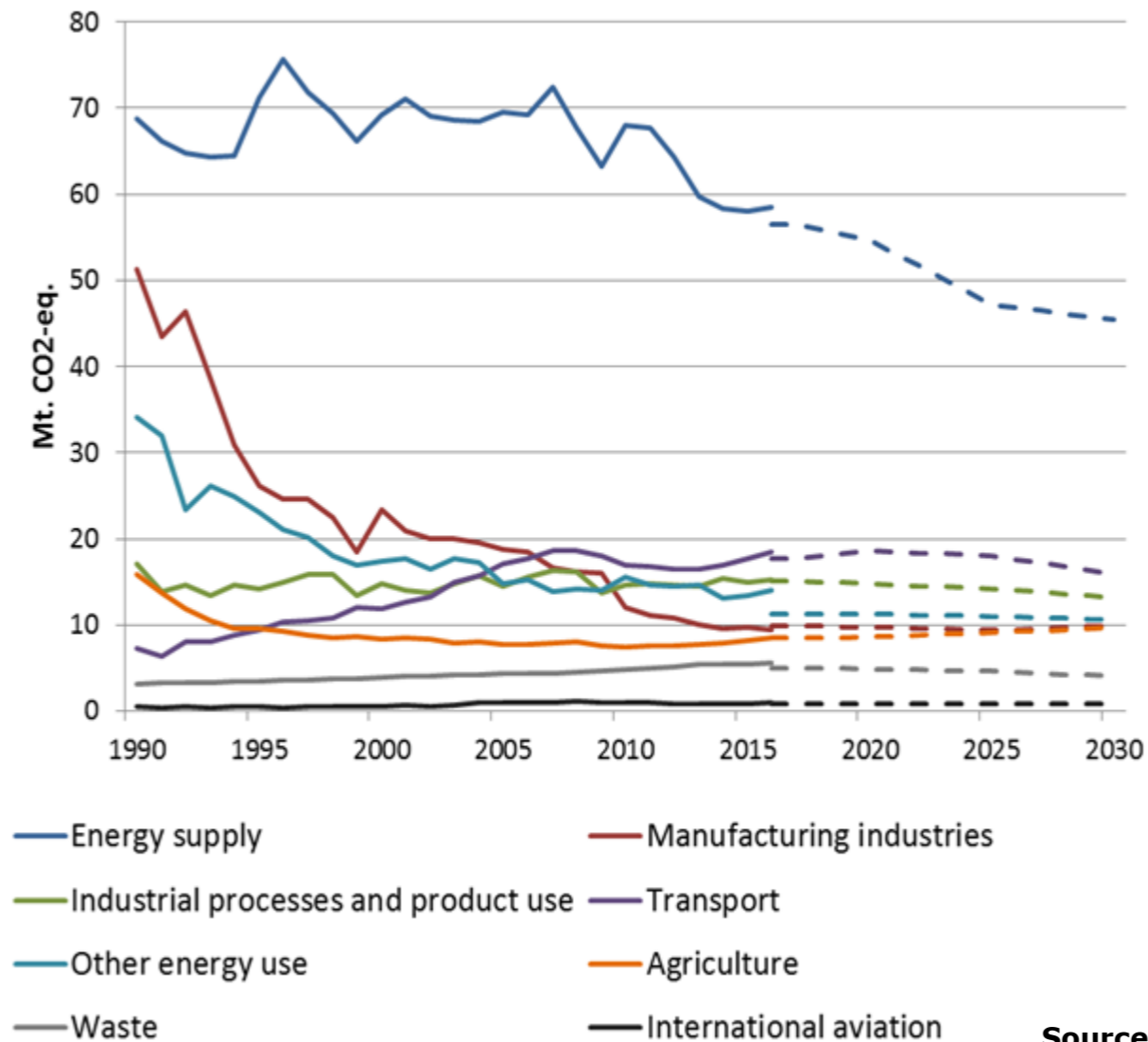
Ministry of the Environment
of the Czech Republic

Ministry of the Environment
Vrsovicke 65, 100 10 Prague 10
Czech Republic

www.mzp.cz



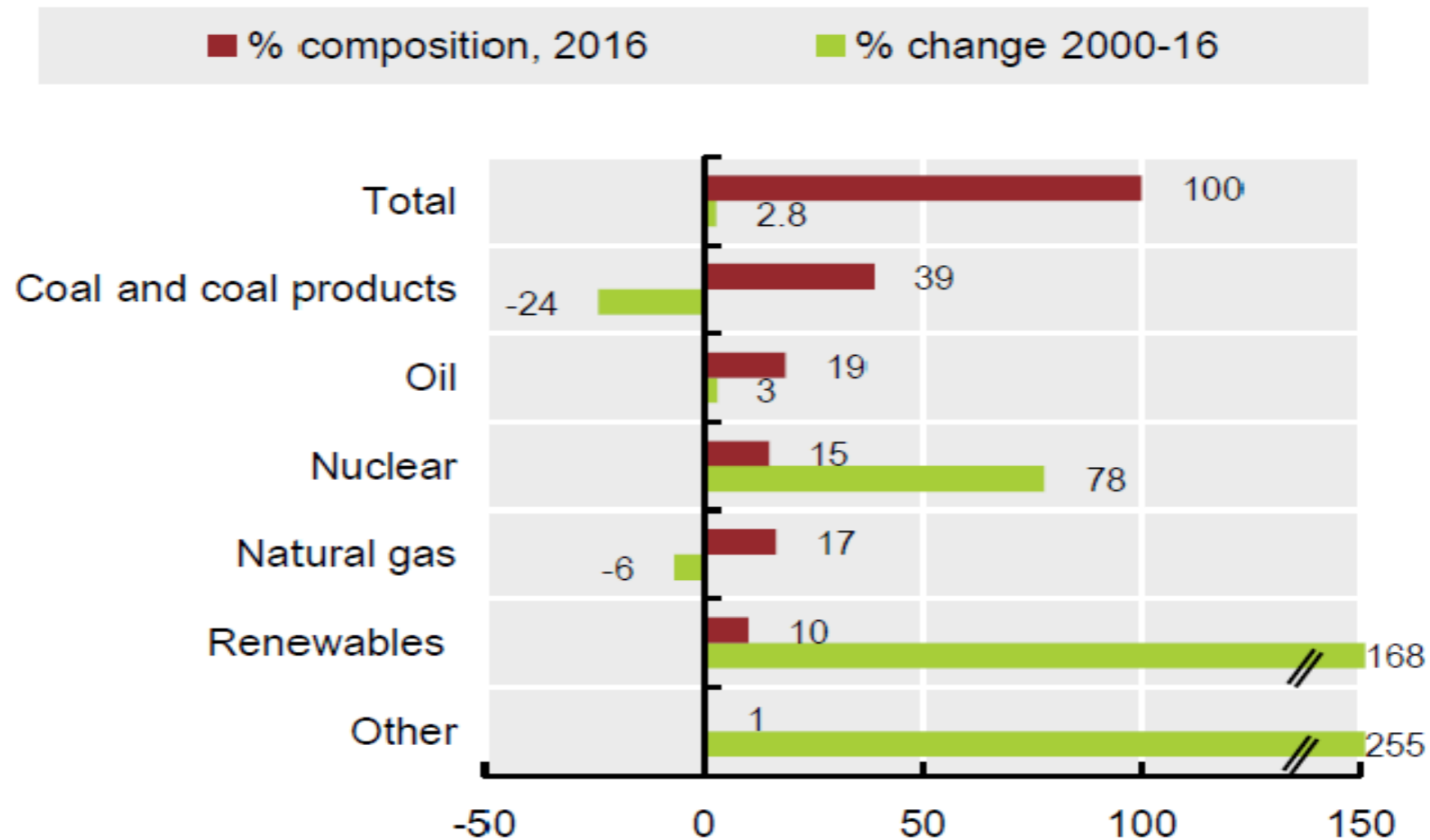
GHG trends and projections by sector



Source: Czech Hydrometeorological Institute



Gradual shift from coal to nuclear in the energy mix



Source: OECD Performance Reviews Czech Republic 2018

- ❑ **Gradual decarbonisation of energy sector**
- ❑ **New State Energy Policy expects further decrease of coal consumption by about 2/3 by 2040**



Czech Climate Policy

Ministry of the Environment
of the Czech Republic

Ministry of the Environment
Vrsovicke 65, 100 10 Prague 10
Czech Republic

www.mzp.cz



Climate and Energy Policy

- **Climate Protection Policy of the Czech Republic (2017)**
 - **National Low Emission Strategy with goals for 2030 and outlook for 2050**
 - **GHG reduction of 32 Mt CO_{2eq} compared to 2005 until 2020**
 - **GHG reduction of 44 Mt CO_{2eq} compared to 2005 until 2030**
 - **indicative level towards 70 Mt CO_{2eq} of emitted GHG in 2040**
 - **indicative level towards 39 Mt CO_{2eq} of emitted GHG in 2050**
 - **Targets are in line with the EU and international commitments**
 - **Policies and measures in key sectors: Energy, Industry, Energy consumption, Agriculture and Forestry, Transport, Waste, E(C)E&A, R&D**

- **2030 Climate and Energy Framework**
 - **Non EU ETS Sector**
 - **Effort Sharing legislation**
 - **Effort Sharing Decision 2013-2020 (2009)**
 - **Effort Sharing Regulation 2021-2030 (2018)**
 - **Land Use and Forestry Regulation for 2021-2030 (2018)**
 - **EU ETS Sector**
 - **Transposition of Revised EU ETS Directive for 2021-2030 (2018)**

- **National Energy and Climate Plans (draft by 12/2018, final 2019)**
 - **New framework within which EU MS have to plan, monitor and report, in an integrated manner, their climate and energy objectives, targets, policies and measures to the EC**



Key mitigation PAMs (I)

- ❑ **Interministerial working group on climate issues propose and discuss PAMs**
- ❑ **EU ETS, IPPC continue to be key measures for energy and industry**
- ❑ **Support for RES, energy efficiency, public transport and cycling, alternative vehicles, greening of agriculture and utilisation of biogas**
- ❑ **Utilisation of EU Funds – 20% climate related investment (energy efficiency of buildings, industry, greening of agriculture, RES development, etc.)**
- ❑ **New Green Savings Programme – supporting EE and RES in households, financing from EU ETS revenues**



Key mitigation PAMs (II)

- ❑ **Waste Management Plan - reducing bio-waste, ban on landfilling from 2024, increased recycling and energy utilisation of waste**
- ❑ **National Emission Reduction Program of the Czech Republic - 23 priority measures (15 for transport) for air and climate protection**
- ❑ **NAP Clean Mobility - support for alternative drives and fuels development and infrastructure, R&D**
- ❑ **THETA - funding programme for applied research, experimental development and innovation**



What's Next for the Czech Republic?

2021 **Climate Protection Policy
of the Czech Republic** Evaluation

2023 **Global Stocktake**
(Paris Agreement, Article 13)

Nationally Determined Contributions
Update

**Climate Protection Policy
of the Czech Republic** Update



Thank you for your attention



Ministry of the Environment
of the Czech Republic

Ministry of the Environment
Vrsovicke 65, 100 10 Prague 10
Czech Republic

www.mzp.cz

