



2nd OECD-PCCB Network Workshop on Capacity Development

Climate-related data and capacity development

28 de junio de 2022

Fernando de la Mora, Paraguay

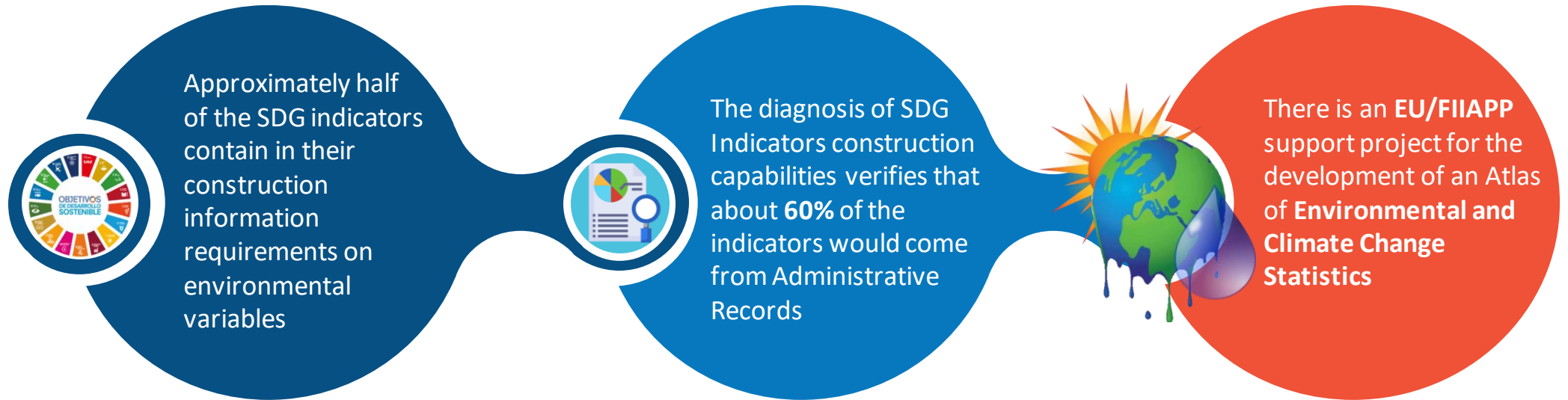


Instituto
NACIONAL de
ESTADÍSTICA

TETĀ REKUÁI
GOBIERNO NACIONAL

Paraguay
de la gente

Conditions for creating a climate change data ecosystem



Conditions for creating a climate change data ecosystem

This Atlas is a work to be carried out jointly with the governing body on environmental issues, MADES and the accompaniment of the National SDG Commission.



It is proposed to work in the conceptual framework through the review and systematization of national and international experiences:



Paraguay. Statistical atlases linked to SDG themes (e.g. gender atlas, disaster risk atlas, etc.), which could serve as a reference (at least three experiences).



Other countries. Environmental and climate atlases linked to the SDGs and/or the environmental issues covered by the SDGs, which could serve as a reference.

Needs to which the creation of the atlas of climate change statistics responds



It seeks to establish the basis for environmental information that ensures timely **monitoring and follow-up** of:

1

International Commitments

Sustainable Development Goals, 2030 Agenda, Montevideo Consensus, other regional initiatives.

2

National Commitments

National Development Plan 2030.

3

Sectoral Plans

Social Protection, Fight against Poverty, Health, Education, Housing, Gender, Water, etc.

4

Local Plans

Departmental and District.

Atlas Development Process: Initial Inputs



Law N° 6670/20
Promulgation of the Law on the Creation of the **Instituto Nacional de Estadística (INE)**



NSDS 2020-2030 (with PARIS21 supporting)
Through the development of the National Statistical Development Strategy 2020-2030, led by the INE during the year 2020, the need to **promote the development of sectoral/thematic subsystems is highlighted**, in order to promote activities framed in the strengthening of each area.



SDG Assesment

Application of the Survey for the Determination of Statistical Capacities for the Construction of indicators 2021 (**includes SDG indicators with an environmental component**)

Atlas Development Process: Initial Inputs

Statistical Yearbook

The National Institute of Statistics (INE), annually makes available the Statistical Yearbook, whose purpose is to give official status to the statistical information generated by the INE and other public institutions **(including data on territory, hydrology and climatology)**

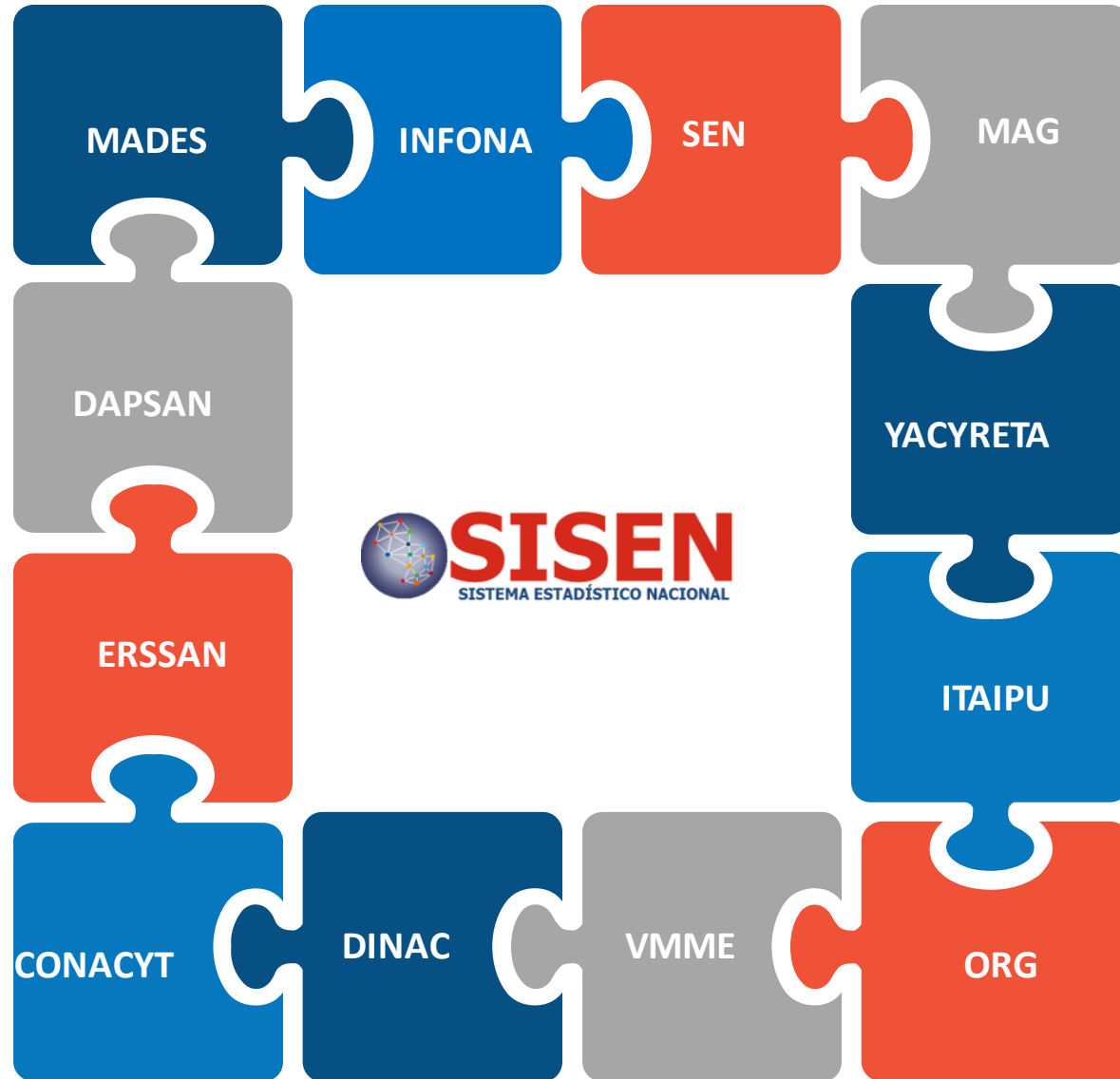


Water Information System

Since 2019, the INE has been developing activities within the framework of the development of a **data-based Water Information System**, with the support of the Global Partnership for Sustainable Development Data (GPSDD) in coordination with public institutions in the sector.



Atlas development process: stakeholders involved



ENVIRONMENTAL AND CLIMATE CHANGE ATLAS

conservación o manejo ambiental, generadas en el MAAIT:

BOSQUES A NIVEL NACIONAL (Continental)
Dashboard con información oficial al año 2018 de la cobertura boscosa (Bosque Nativo y Plantación Forestal) existente en el Ecuador continental bajo diferentes desagregaciones. El bosque es la vegetación arbórea caracterizada por la dominancia de árboles de diferentes especies, edades y partes variables, con uso o más estivo. (Índice Interoctivo Ambiental)

SISTEMA NACIONAL DE ÁREAS PROTEGIDAS - SNAP
Dashboard con información oficial a febrero 2022 de las áreas protegidas contenidas en el Sistema Nacional de Áreas Protegidas - SNAP bajo diferentes desagregaciones. El SNAP es el mecanismo por el cual se conserva múltiples ecosistemas, entre los que se encuentran los bosques.

BOSQUES Y VEGETACIÓN PROTECTORES - BVP
Dashboard con información oficial al año 2021 de los Bosques y Vegetación Protectores bajo diferentes desagregaciones. Los BVP son formaciones vegetales, naturales o cultivadas, arbóreas, arbustivas o herbáceas, de dominio público o privado, declaradas bajo ciertas condiciones para su conservación y manejo. (Código Orgánico del Ambiente - COA)

SOCIO BOSQUE
Dashboard con información oficial al año 2021 de los convenios individuales y colectivos de conservación y/o manejo sostenible bajo el mecanismo Socio Bosque, información bajo diferentes desagregaciones. Socio Bosque también es la entrega de incentivos económicos a campesinos, comunidades indígenas y personas en general que se comprometen voluntariamente a la conservación y protección de sus bosques nativos, plantados u otra vegetación nativa. (Proyecto Socio Bosque)

BOSQUES NATIVOS
Dashboard con información oficial al año 2021 de la cobertura boscosa nativa existente en el Ecuador continental bajo diferentes desagregaciones. El bosque nativo es la vegetación arbórea caracterizada por la dominancia de árboles de diferentes especies, edades y partes variables, con uso o más estivo. (Índice Interoctivo Ambiental)

DIRECCIÓN DE INFORMACIÓN AMBIENTAL Y DEL AGUA

Accuerdo de Esfuerzo de Esfuerzo

Ministerio del Ambiente, Agua y Transición Ecológica

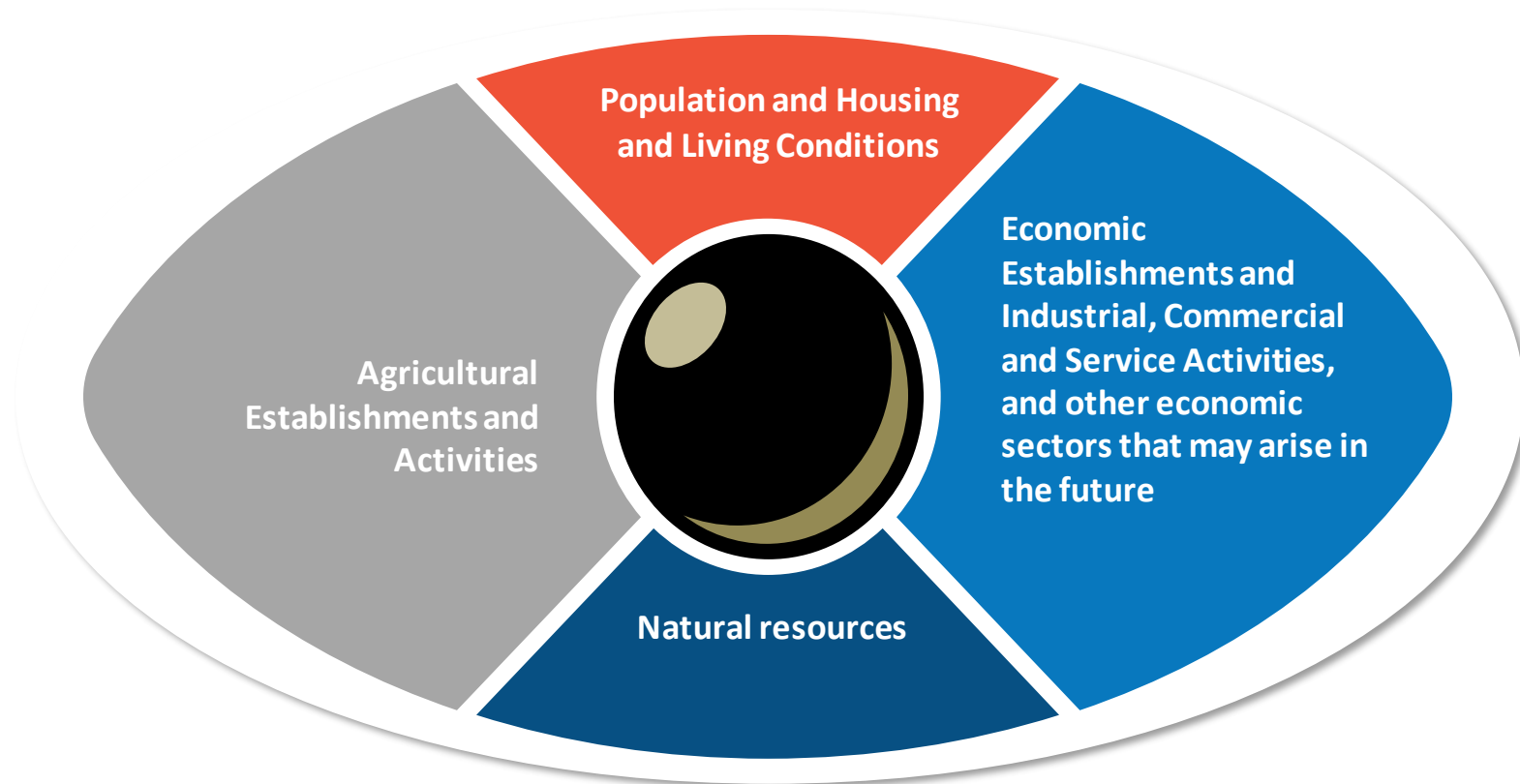
Gobierno del Ecuador

Gobierno del Ecuador

An innovation with a futuristic vision of statistics in Paraguay



The regulatory decree of the new statistical law of the INE, in the process of approval, in one of its articles on "CENSOS. PERIODICITY", **establishes the conduct of censuses of:**



Main challenges in the development of the atlas and the strategic areas where more support is needed

Promote the **strengthening of Strategic Areas**, in order to give continuity to the availability of information in a timely manner.



Enhance and strengthen the use of **Administrative Records as a source of statistical data**.



Achieve the **periodicity of statistical operations**.



Need to **strengthen the process of methodological development in environmental issues**.



Incorporate the application of new methodologies, such as the use of satellite images, in statistical production.



¡Aguyje!

¡Muchas gracias!

Thanks!



Naciones Unidas e/ Centeno
Fernando de la Mora - Zona Norte
Tel.: (595-21) 677 920/1
www.ine.gov.py



Instituto Nacional de Estadística – Paraguay



@INE_Paraguay



@ine_paraguay



Instituto Nacional de Estadística – INE Paraguay



Instituto
NACIONAL de
ESTADÍSTICA

 TETÃ REKUÁI
GOBIERNO NACIONAL

*Paraguay
de la gente*