



Progress towards achieving GHG targets

Lithuania's Multilateral Assessment at SBI 49
Katowice, Poland, 3rd December 2018





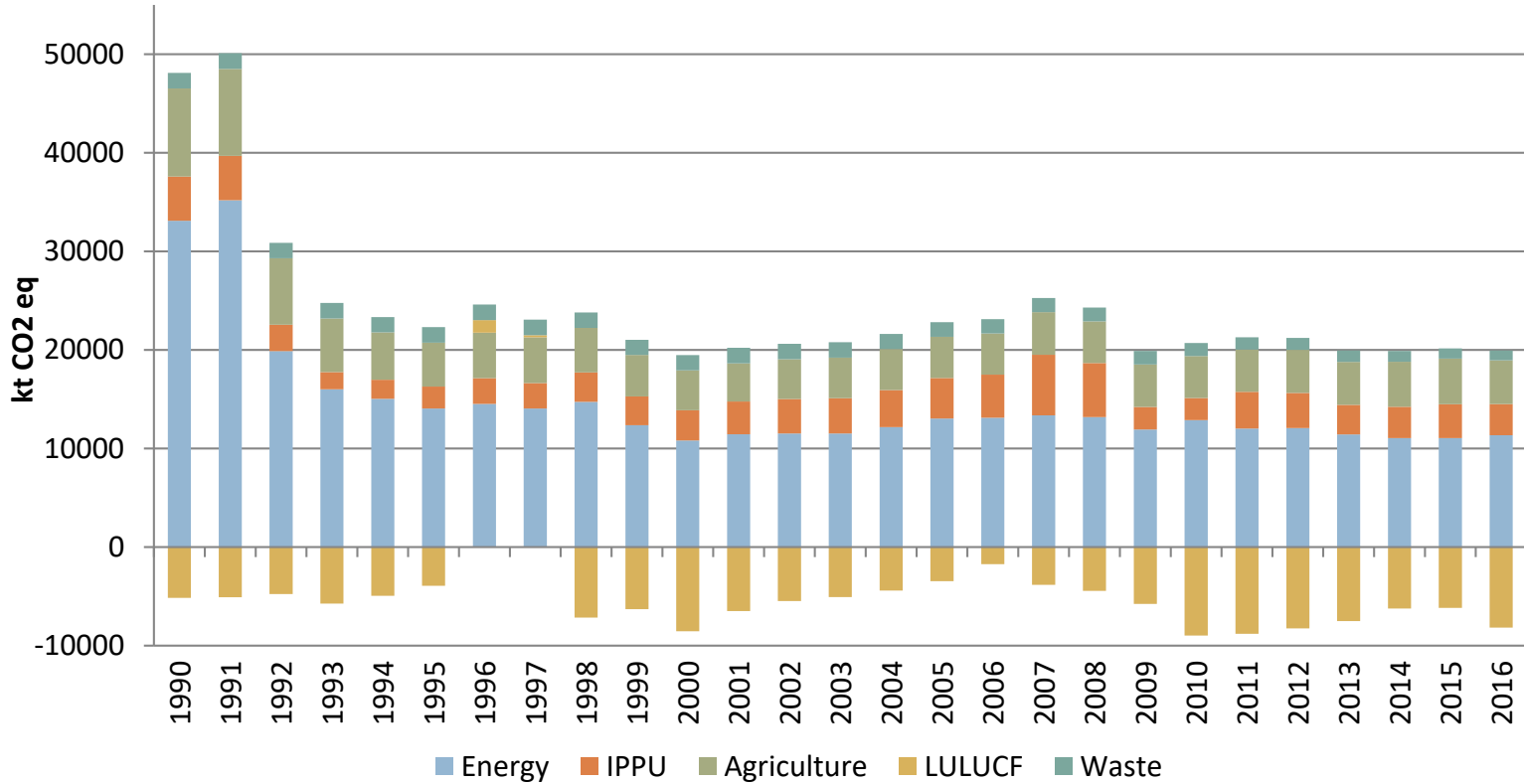
Lithuania's national circumstances



- **Geography**
Baltic States
Area: 65 302 km²
- **Population (2016)**
2.89 million inhabitants
- **GDP (2016)**
13 544 Euro/capita
- **GHG emissions (2016)**
20.1 m t CO₂ eq
6.9 t CO₂ eq GHG/capita

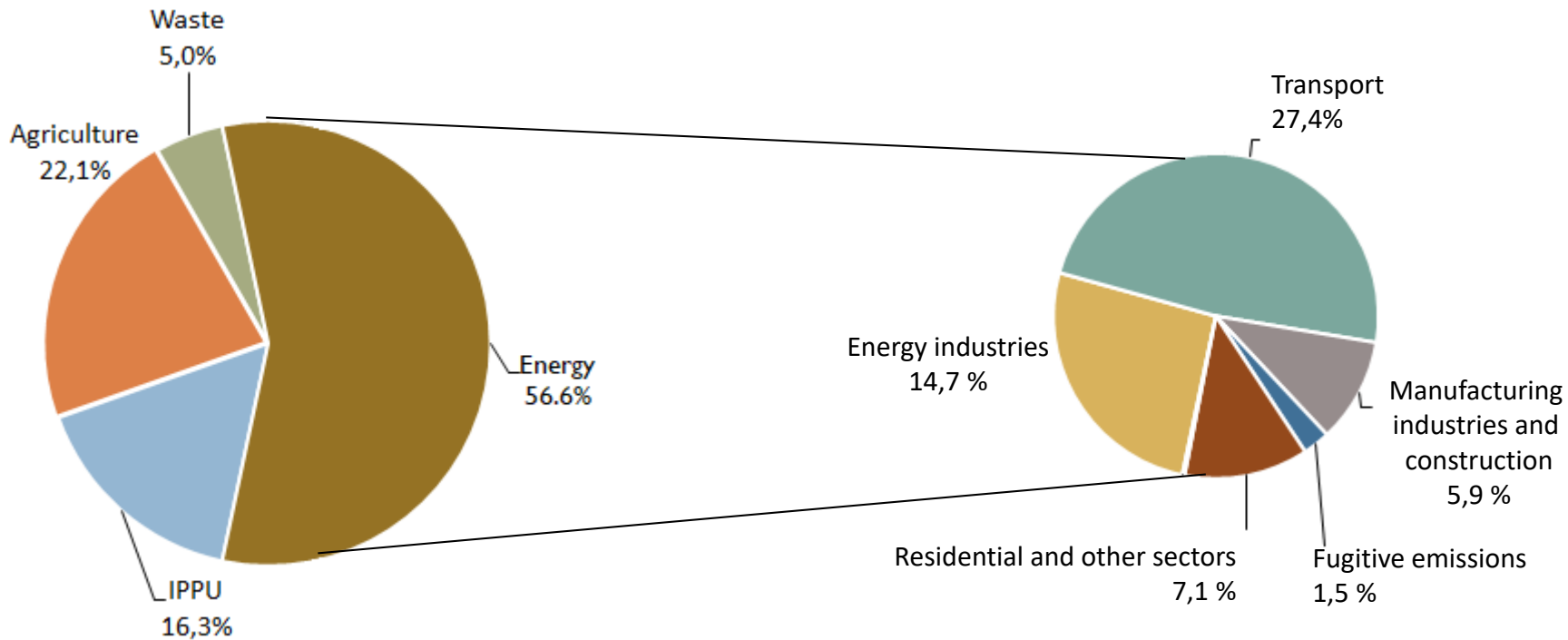


GHG emissions 1990-2016



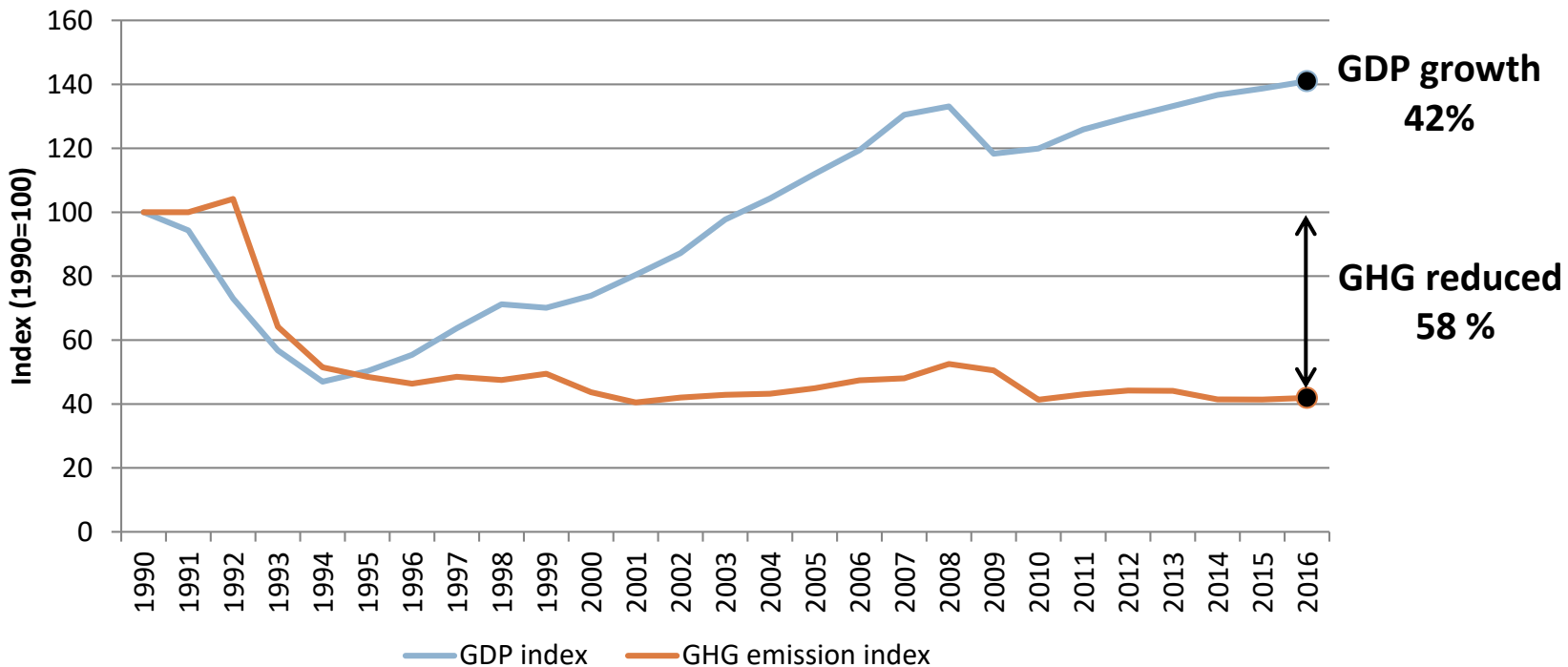


GHG emissions by sector in 2016





Changes of GDP and GHG emission index in Lithuania



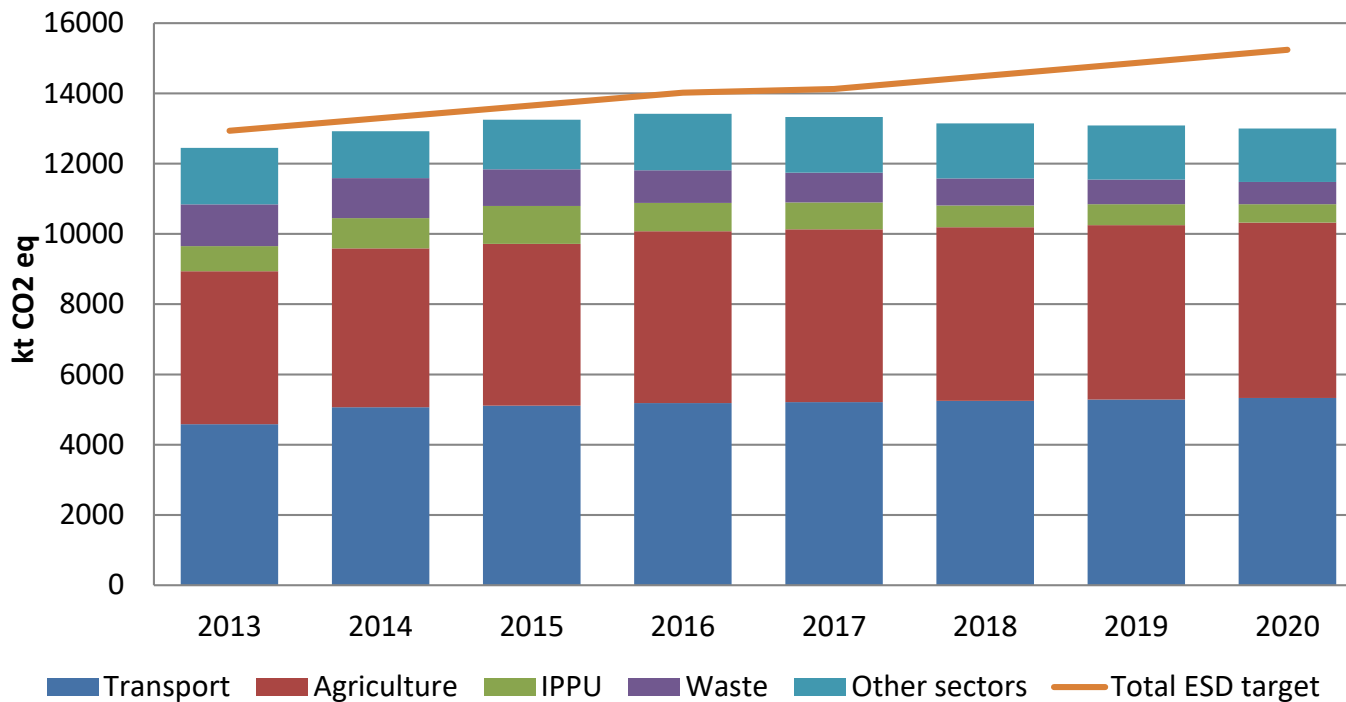


Lithuania's commitments under the EU law and the KP2 until 2020 and their implementation in 2016

| | EU | Lithuania | Implementation |
|---|------|-----------------|----------------|
| GHG emission reduction under KP CP2 (reference year 1990) | -20% | EU level target | -23% |
| EU ETS emission reduction (reference year 2005) | -21% | EU level target | -26% |
| Non-ETS emission reduction (reference year 2005) | -10% | +15% | -0,7% |
| Renewable energy in final consumption | 20% | 23% | 25.4% |
| RES in transport | 10% | 10% | 3.6% |
| Improvement of energy efficiency | 20% | 17% | 6.8% |



Lithuania's ESD annual targets and projected GHG emissions with additional measures





Key policies and measures

Climate change key policies and measures

Strategy for the National Climate Change Management Policy by 2050 (2012)
(currently under review)

Action Plan on the Implementation of the Goals and Objectives for 2013-2020 of the Strategy for the National Climate Change Management Policy (2013) (will be replaced beyond 2020)

Cross-cutting policies and measures

National Reform Programme (2011)

National Sustainable Development Strategy (2003, 2011)

Lithuania's Progress Strategy 2030 (2012)

Sectorial policies and measures in energy, buildings, transport, industry, agriculture, forestry, waste management



Key policies and measures

| Sectors affected | National sectorial measures |
|--------------------------|---|
| Renewable energy | <ul style="list-style-type: none">• Cogeneration using biomass and waste• Wind, solar, geothermal energy• Biofuels in transport |
| Energy efficiency | <ul style="list-style-type: none">• Agreements with energy producers• Modernization of multi-apartment and public buildings• Standards for energy performance in buildings |
| Transport | <ul style="list-style-type: none">• Investments in public transport and cycling infrastructure• Electrification of railway• Electric vehicles• Road signs |
| Industry | <ul style="list-style-type: none">• Promotion of innovation• Research and development |
| Agriculture | <ul style="list-style-type: none">• Biogas production from agriculture waste• Reduction of nitrates and chemical fertilizers• Innovative technologies for treatment of manure• Sustainable agriculture farming |



Key policies and measures

Performance and Energy Efficiency Standards

Environmental Tax -> Environmental Investment Program

Emissions Trading -> Special Program for Climate Change

Tariffs Subsidies

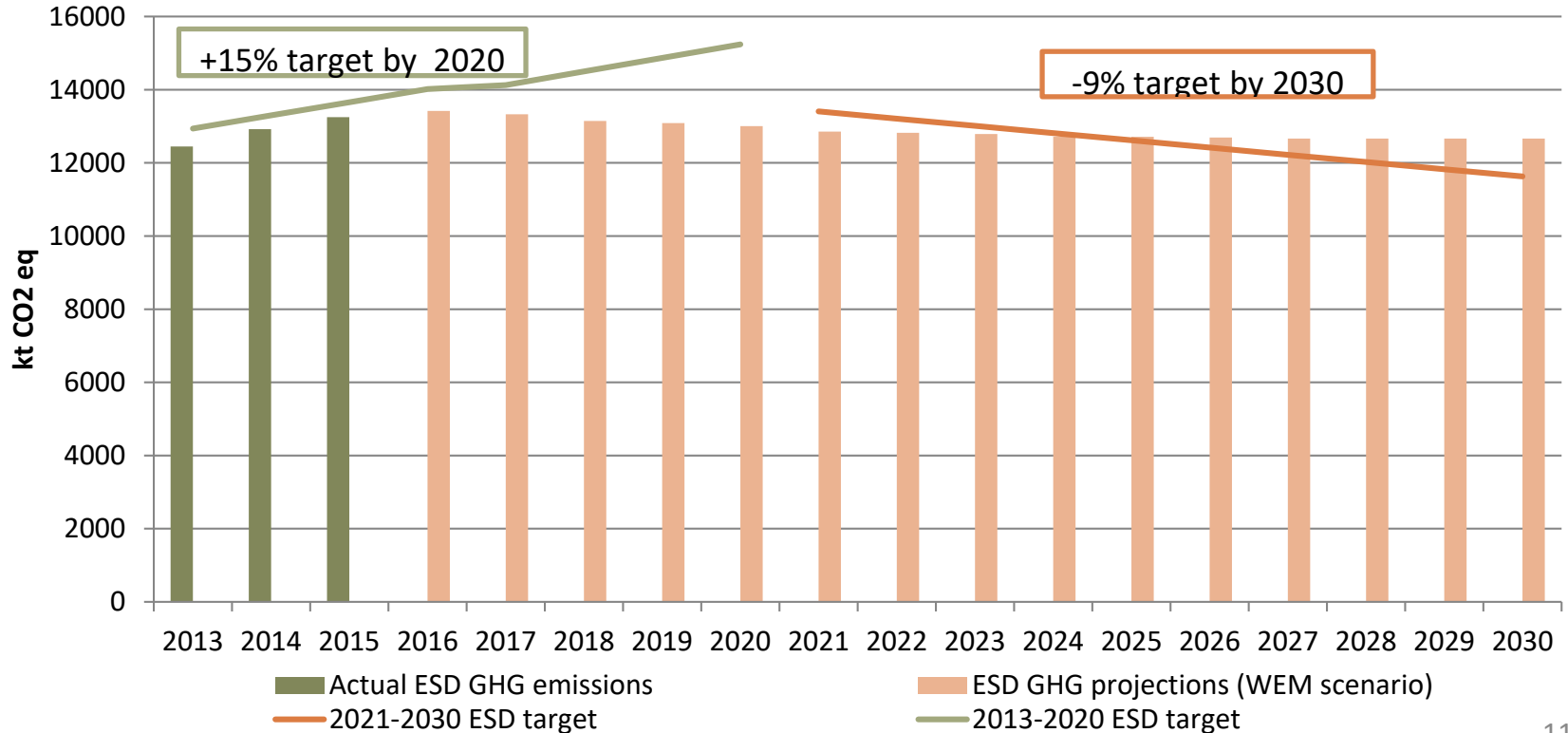
Tax Incentives

EU structural and investment funds 2014-2020

Combination of economic instruments

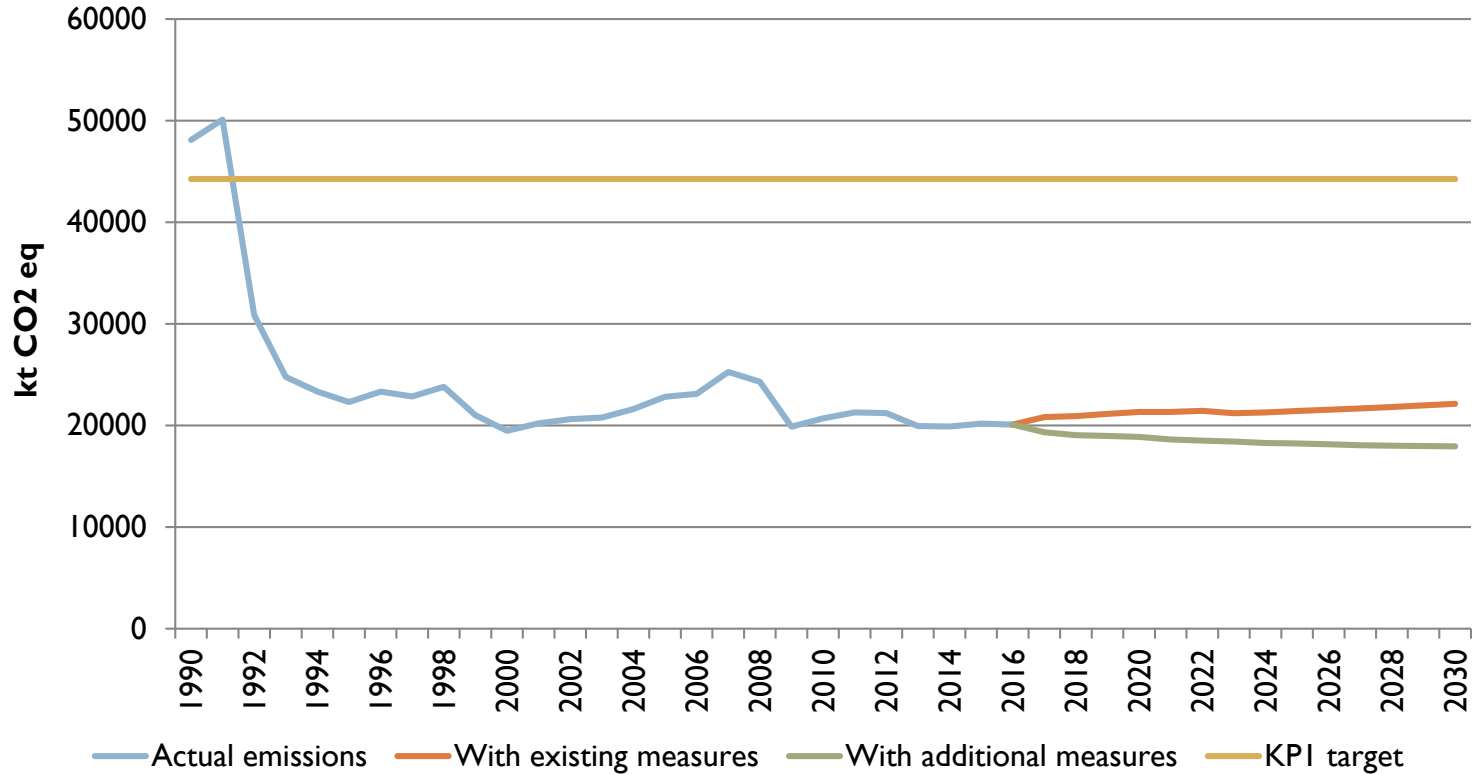


Non-EU ETS annual targets till 2020 and projected 2030 targets and GHG emissions with existing measures





GHG emissions and projections





Thank you

Lithuania
Celebrates 100

