



Multilateral Assessment Czech Republic



**SBI 42, Bonn
June 2016**

Ministry of the Environment
of the Czech Republic

Ministry of the Environment
Vrsovicka 65, 100 10 Prague 10
Czech Republic

www.mzp.cz



National Circumstances



Czech Republic since January 1, 1993, former Czech and Slovak Federative Republic (split of Czechoslovakia), since May 1 2004, Member of the EU

Area: 78 866 km²

Population (2013): 10 538 275 inhabitants (133,6 inh./km²)

GDP per capita: 26 740 USD

Currency: Czech Crown (CZK),
ca 25 CZK per USD, ca 28 CZK per EURO



Joint fulfilment of Convention and CP2 commitments

- ❑ **2020 commitments to be fulfilled jointly by the EU in line with the Climate and Energy Package**

- ❑ **Pledge under the Convention for EU and its Member States:**
 - Unconditional quantified economy wide emission reduction target of 20% by 2020, compared to 1990 levels
 - Conditional offer to move to 30% if other developed countries commit themselves to comparable emission reductions and if more advanced developing countries contribute adequately according to their responsibilities and respective capabilities

- ❑ **Binding commitment under the Kyoto Protocol**
 - CP2: joint commitment of the EU, its MS and Iceland to reduce average annual emissions during 2013-2020 by 20% compared to base year

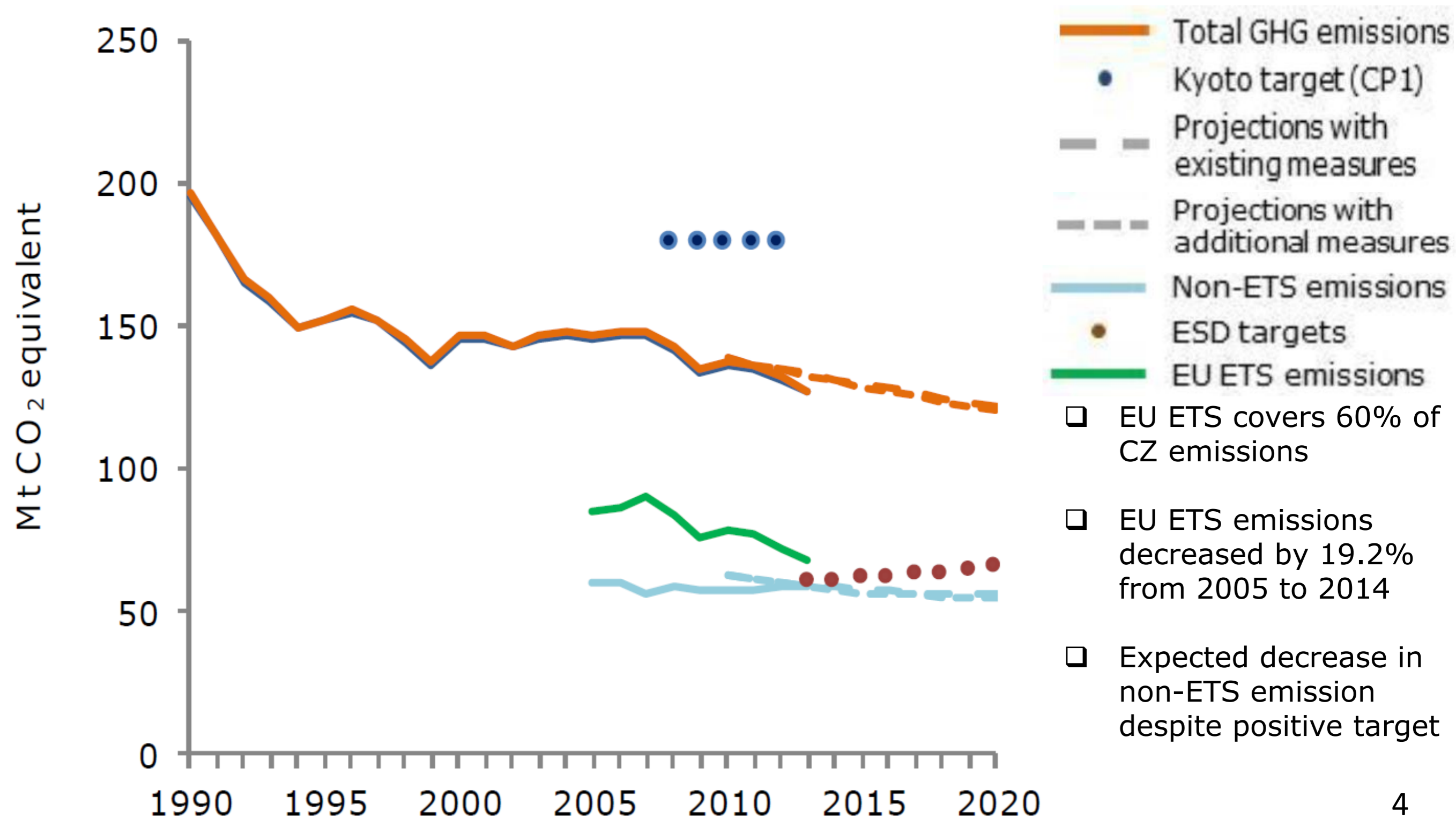


EU Climate and Energy Package

- Binding EU-wide 20% GHG emission reduction by 2020 compared to 1990:
 - EU Emission Trading System: EU wide cap based on harmonized rules – 21% reduction target 2005 - 2020
 - CZ target for non-ETS sectors: +9% against 2005
- Binding 13 % share of renewable energy in gross total final energy consumption
- Non-binding 20% EU-wide energy efficiency target: CZ indicative target 47,78 PJ (13,27 TWh) additional energy savings by 2020



CZ on track to meet its Kyoto Protocol and EU commitments



CZ on track to meet its Kyoto and EU commitments

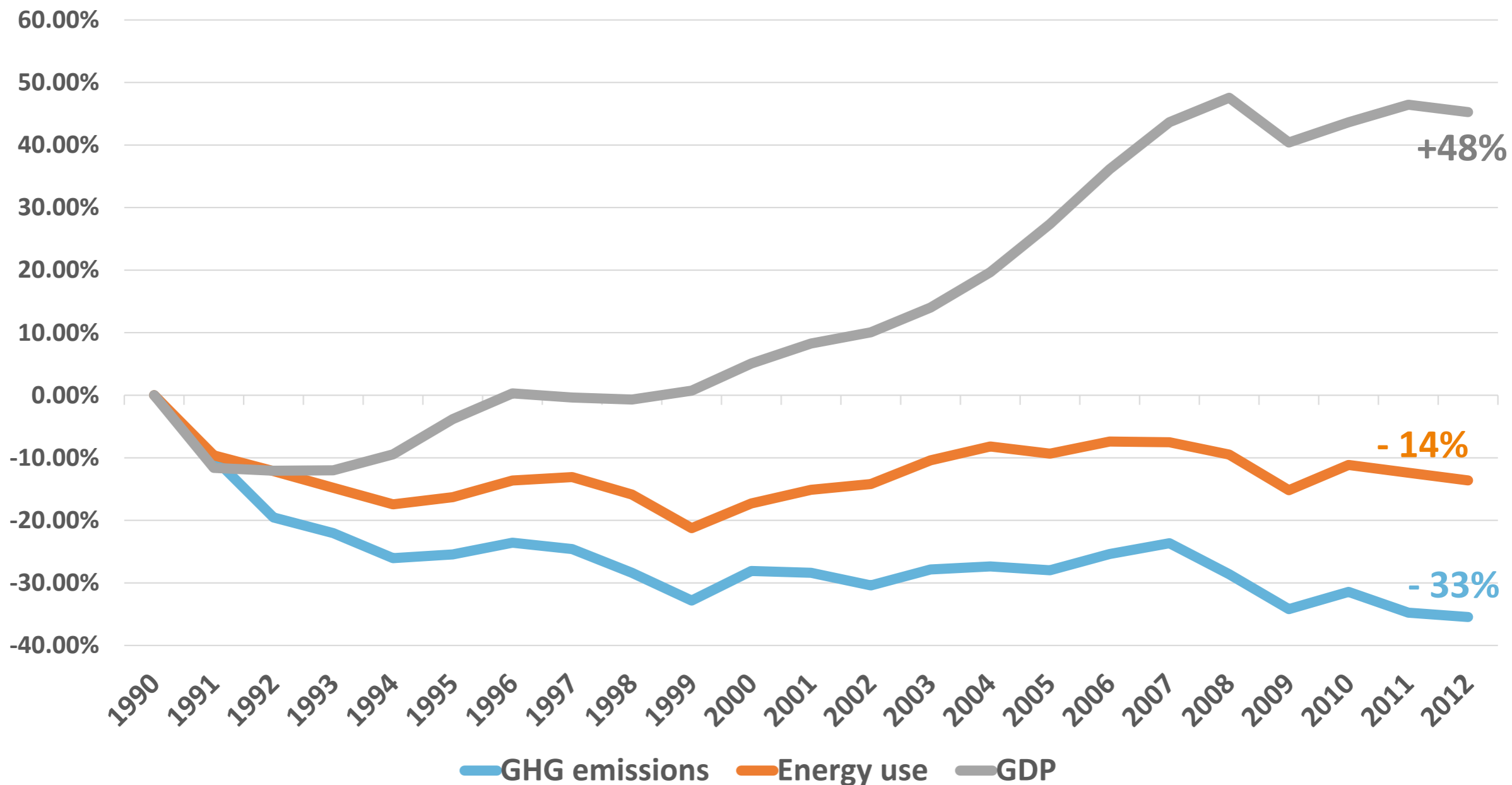
- **CZ target for CP1 (2008-2012): - 8%**

- **2012 GHG emissions**
 - excluding LULUCF: 33% (72,1 Mt) decrease against 1990
 - including LULUCF: 35.5% (68,6 Mt) decrease against 1990

- **2020 projected emissions (excluding LULUCF)**
 - with existing measures: 39% decrease against 1990
 - with additional measures: 42% decrease against 1990



Decoupling of economic growth and GHG emissions



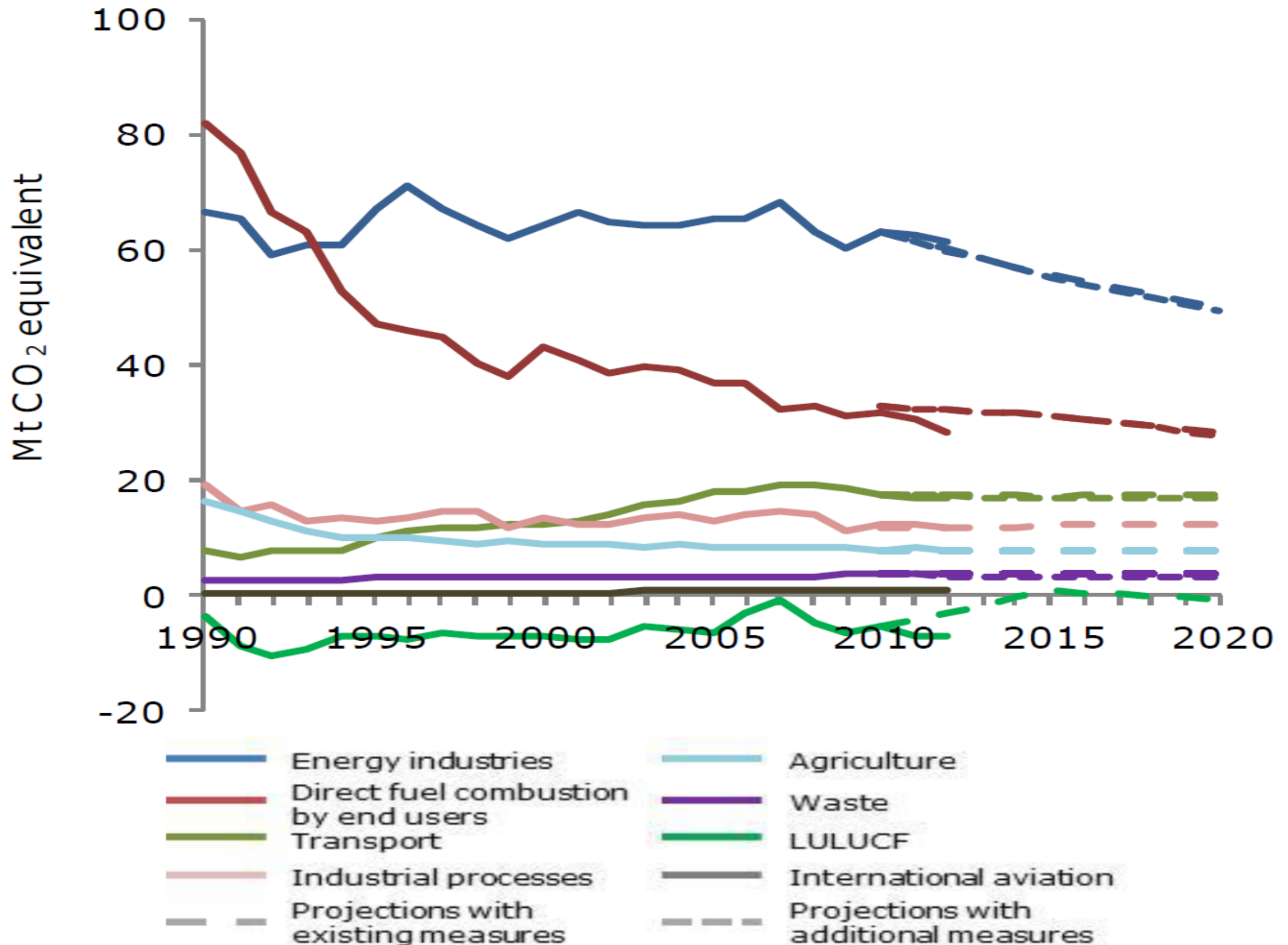
Ministry of the Environment
of the Czech Republic

Ministry of the Environment
Vrsovicka 65, 100 10 Prague 10
Czech Republic

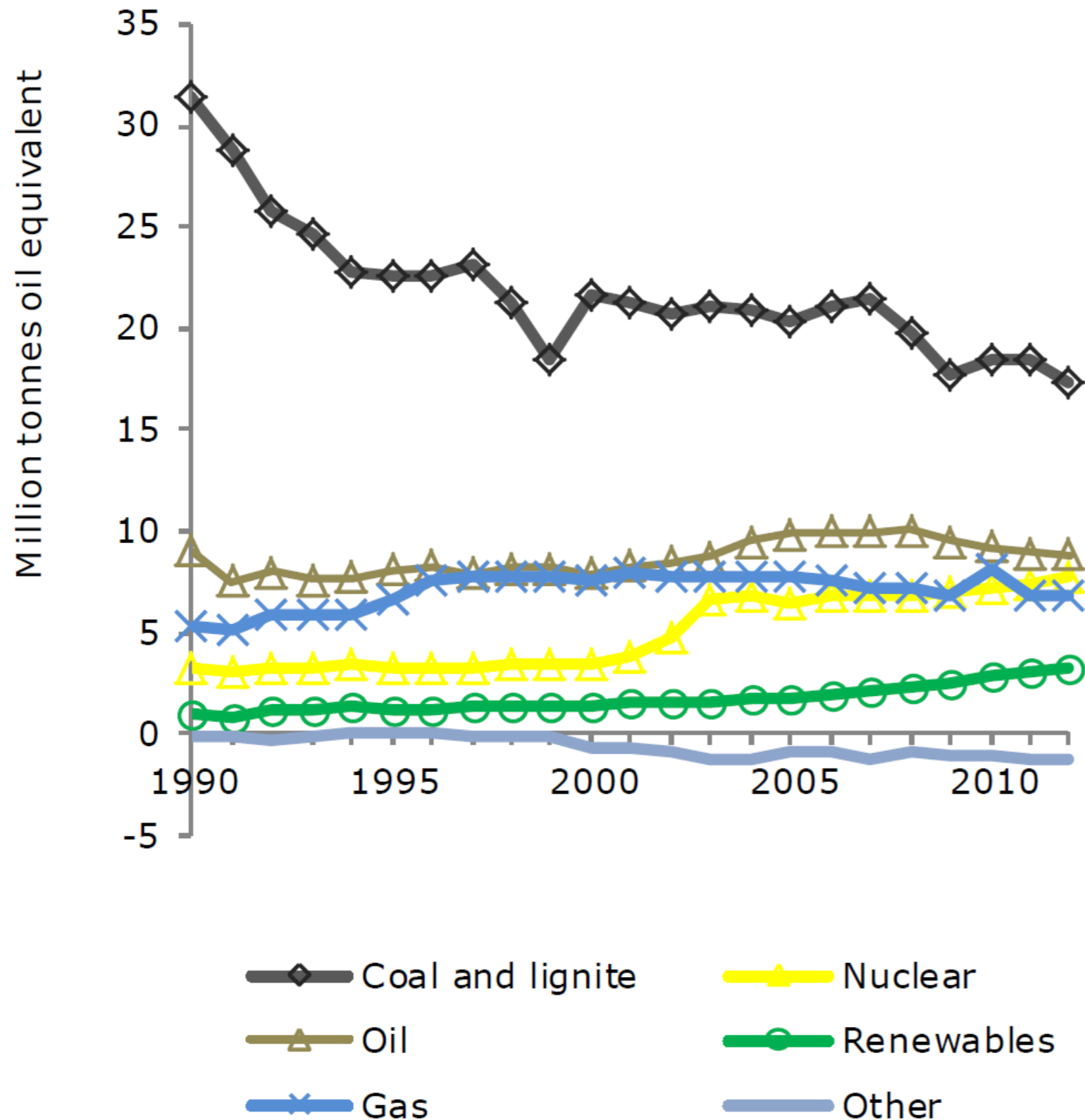
www.mzp.cz



GHG trends and projections by sector



Decreasing dependence on GHG intensive fossil fuels



- In 2012 11.2% share of RES in gross energy consumption
 - Close to 2020 goal
 - Main instrument: feed-in tariff and investment subsidies
- Gradual decarbonisation of energy sector
- New State Energy Policy expects further decrease of coal consumption by about 2/3 by 2040

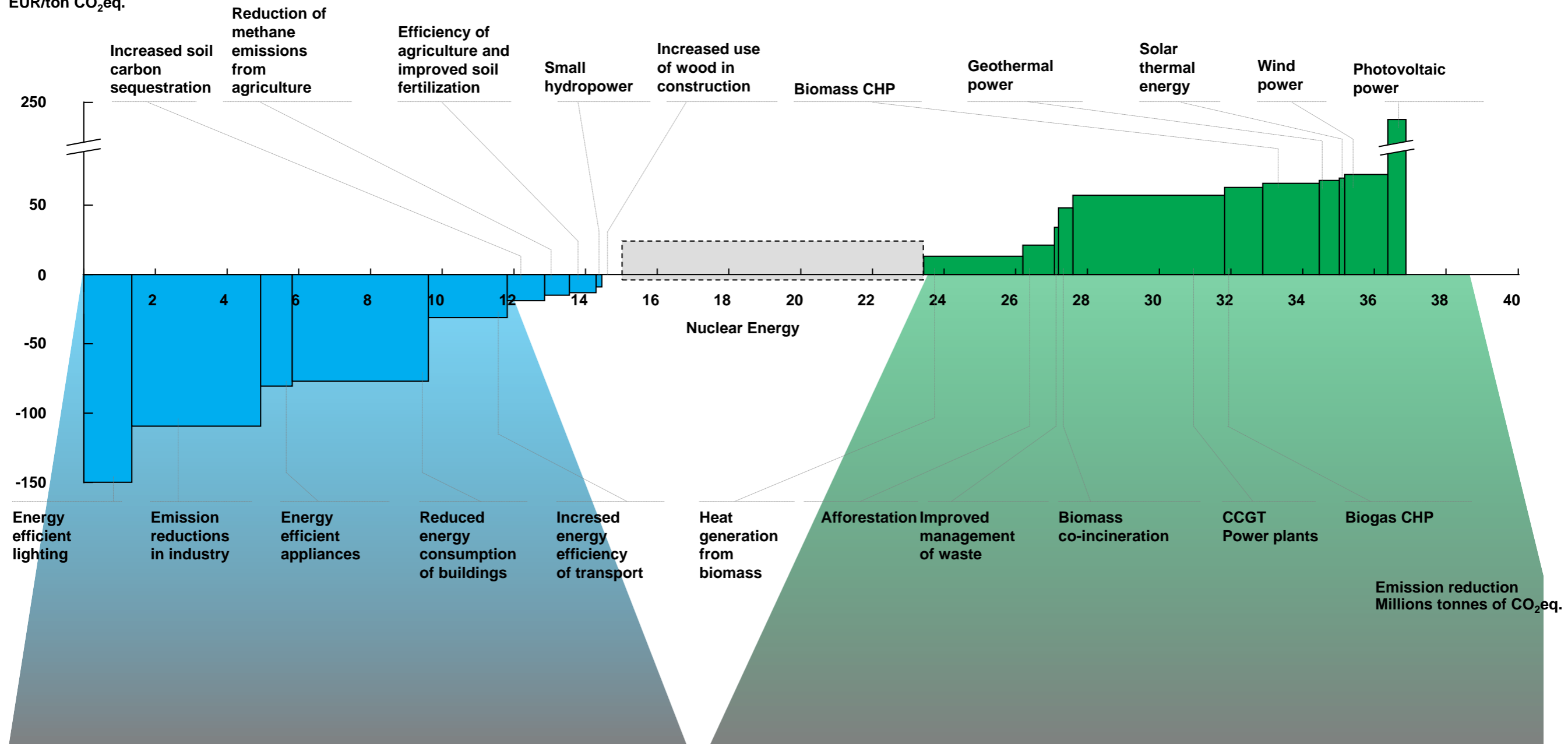
Climate and Energy Policy

- ❑ The National Program to Abate the Impacts of Climate Change in the Czech Republic (2004)
- ❑ Climate Protection Policy of the Czech Republic (draft)
 - Low Carbon Development Strategy with goals for 2030 and outlook for 2050
 - Targets to be in line with the EU and International commitments (40 % EU-wide reduction by 2030 compared to 1990)
 - Presentation of proposal to the Government planned for 1Q 2016
- ❑ State Energy Policy (2015)
 - Energy outlook to 2040 binding for the public administration
 - Envisages decrease in share of coal in electricity production from 57% to 17,5% and increase in share of nuclear energy from 33% to 48% and RES from 6,8 % to 22.8% by 2040



GHG abatement potential in the Czech Republic

Emission reduction costs, 2008 prices
EUR/ton CO₂eq.



Thank you for your attention



Ministry of the Environment
of the Czech Republic

Ministry of the Environment
Vrsovicke 65, 100 10 Prague 10
Czech Republic

www.mzp.cz

