



MINISTRY OF NATURAL RESOURCES AND ENVIRONMENTAL SUSTAINABILITY

# MALAYSIA

---

## FOURTH BIENNIAL UPDATE REPORT TO THE UNFCCC

5 June 2024

Sixteenth Workshop of the Facilitative Sharing of Views  
(FSV) at SBI 60, Bonn, Germany

# NATIONAL CIRCUMSTANCES: MALAYSIA

## Population

32.5 mil (2019)

## Economy

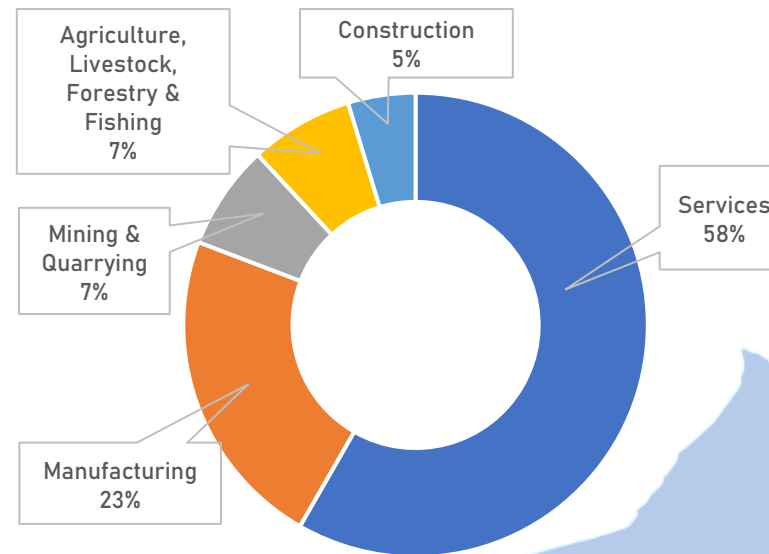
GDP growth from RM729.9 bil (2005) to RM1,424.3 bil (2019) based on constant prices of year 2015

## Climate

Equatorial with uniform daily variation of temperatures (26 – 28°C)

## Area

330,241 km<sup>2</sup> with 54.9 % estimated forest cover (2019)



## Geography

Ranges from coastal plains to mountainous terrains

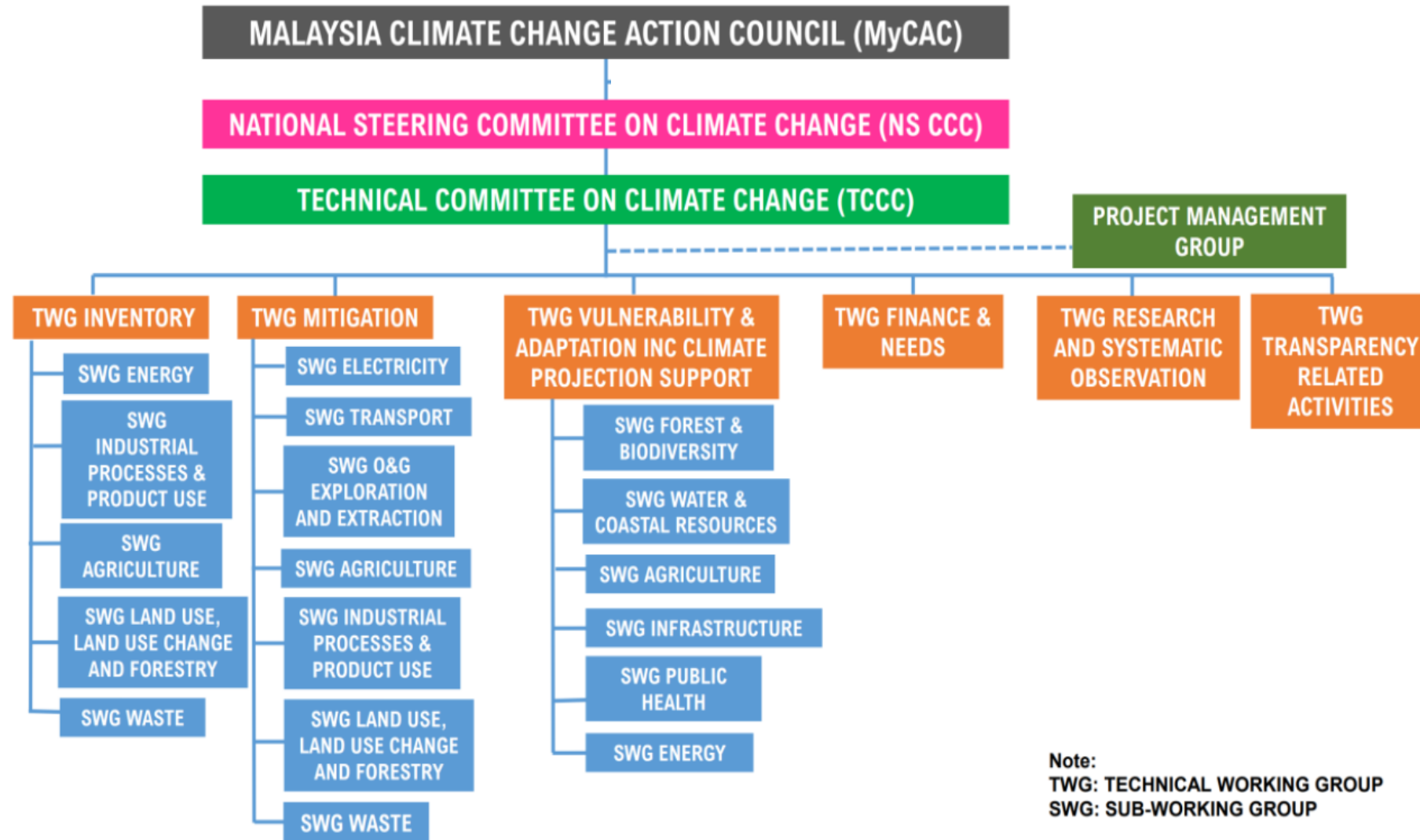
## Urbanization Rate

76.2% (2019)

## Region

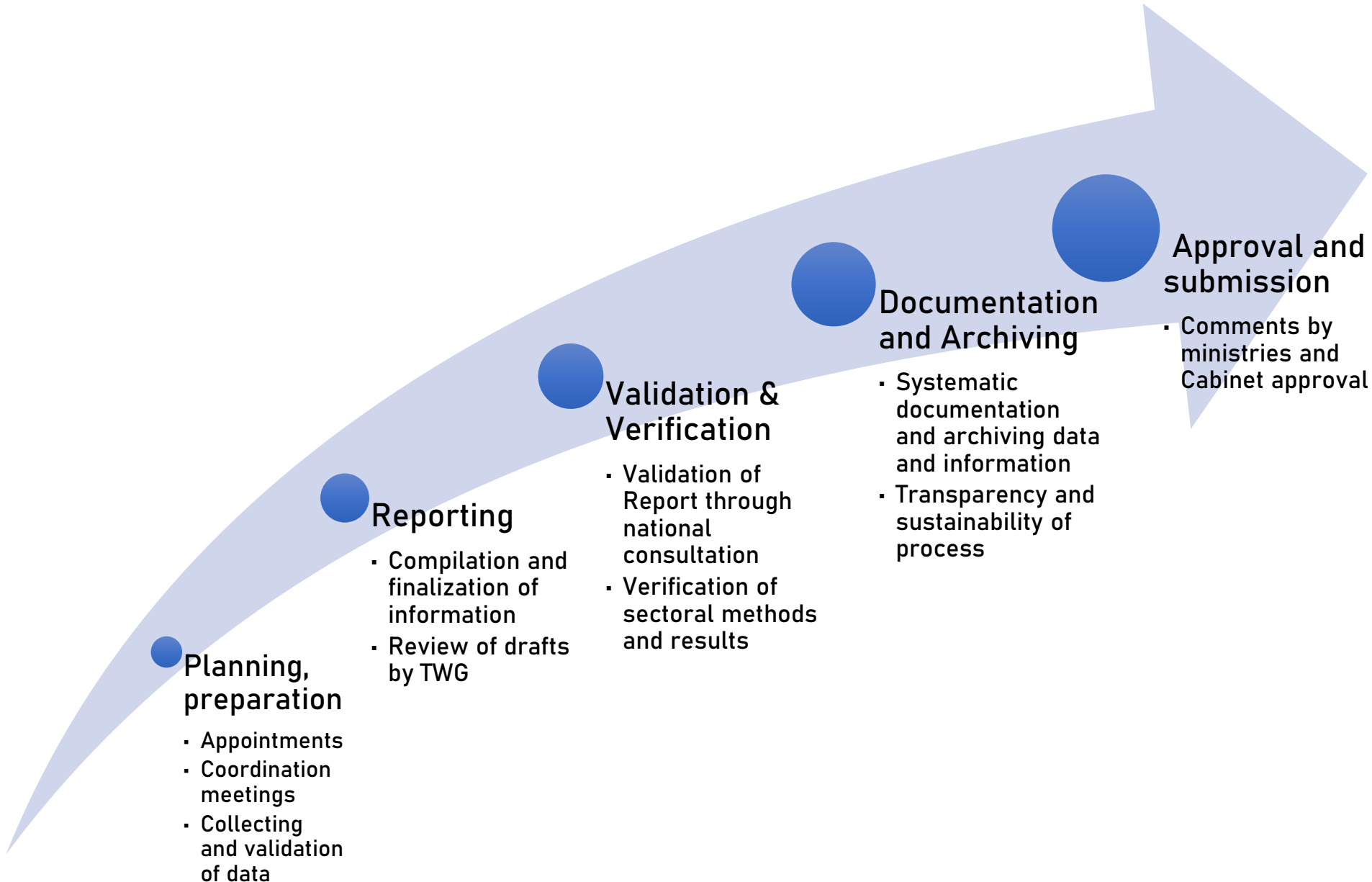
Southeast Asia

# NATIONAL CIRCUMSTANCES – INSTITUTIONAL ARRANGEMENT



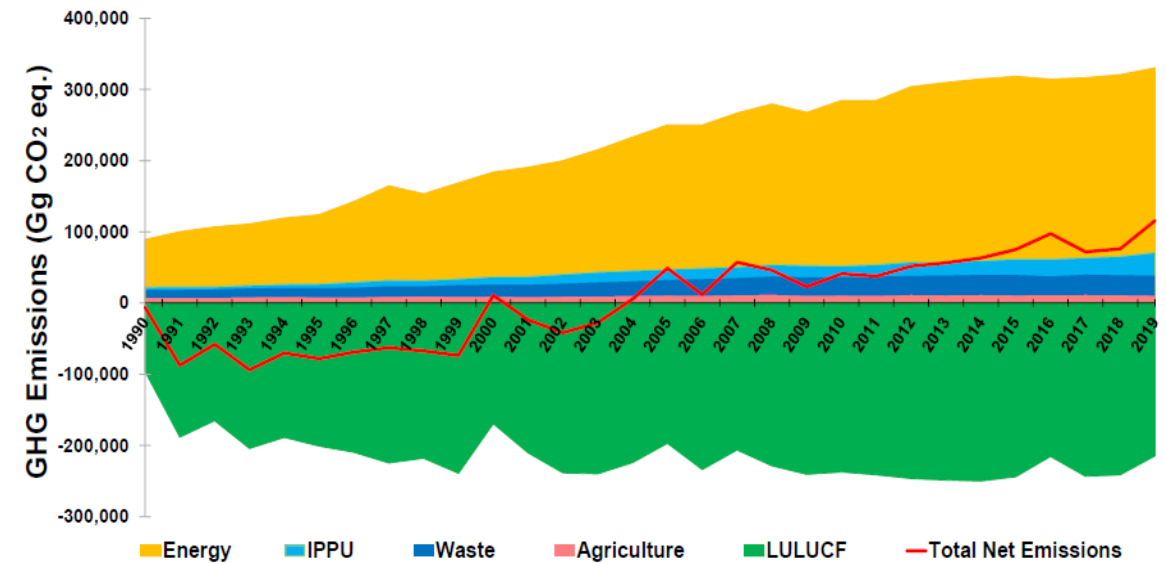
Note:  
TWG: TECHNICAL WORKING GROUP  
SWG: SUB-WORKING GROUP

# DOMESTIC MRV



# GHG INVENTORY

	2005 (Gg CO <sub>2</sub> eq)	2019 (Gg CO <sub>2</sub> eq)	% Increase
Energy	202,676.41	259,326.11	28%
IPPU	15,101.6	32,853.80	118%
AFOLU- Agriculture	10,265.04	9,921.71	-3%
AFOLU- LULUCF	-197,076.76	-214,714.54	9%
Waste	22,000.75	28,256.59	28%
Total (excluding LULUCF)	250,043.80	330,358.21	32%
Total (including LULUCF)	52,967.03	115,643.68	118%



## Main drivers of current emissions

- Increased metal industry plant

## Improvement:

- Reporting period: X-3
- Completeness of categories of emissions

# MITIGATION ACTIONS AND EFFECTS

- NDC: Greenhouse gas intensity (GHG emissions per GDP)
- Mitigation actions are primarily in the energy and LULUCF sectors
  - Increased share of Renewable Energy in the energy mix
  - Improved energy efficiency
  - Enhancing conservation efforts and implementation of Sustainable forest management
  - Increased recycling rates
- Improvement: Addition of mitigation actions from the IPPU and Agriculture sector
- CDM Projects:

TOTAL  
EMISSIONS  
REDUCTIONS  
ACHIEVED WITH  
LULUCF:  
48,040.54 Gg  
CO2 eq.)

No of Projects	Emissions Reduction (mil tonnes CO2 eq)	Total CER issues	Estimated Investments (mil USD)
149	55,214,626.91	13,777,247.00	453.26

# SUPPORT RECEIVED (FINANCE, TECHNOLOGY, CAPACITY-BUILDING) (2019)



- Note:
- CGE: Consultative Group of Experts
  - ASEAN: Association of Southeast Asian Nations
  - ADB: Asian Development Bank
  - JICA: Japan International Cooperation Agency
  - GIZ: Deutsche Gesellschaft für Internationale Zusammenarbeit
  - ECBI: European Capacity Building Initiative

## Global Environment Fund (GEF)

- Support received to develop institutional and technical capacity on reporting obligations to the UNFCCC as well as implementation of mitigation actions.
- Funding received to build-up technical and technological capacities of mitigation projects for the following sectors:
  - i. Transport
  - ii. Energy
  - iii. Forestry (peatland)
  - iv. Low Carbon Cities
  - v. Community Empowerment Projects

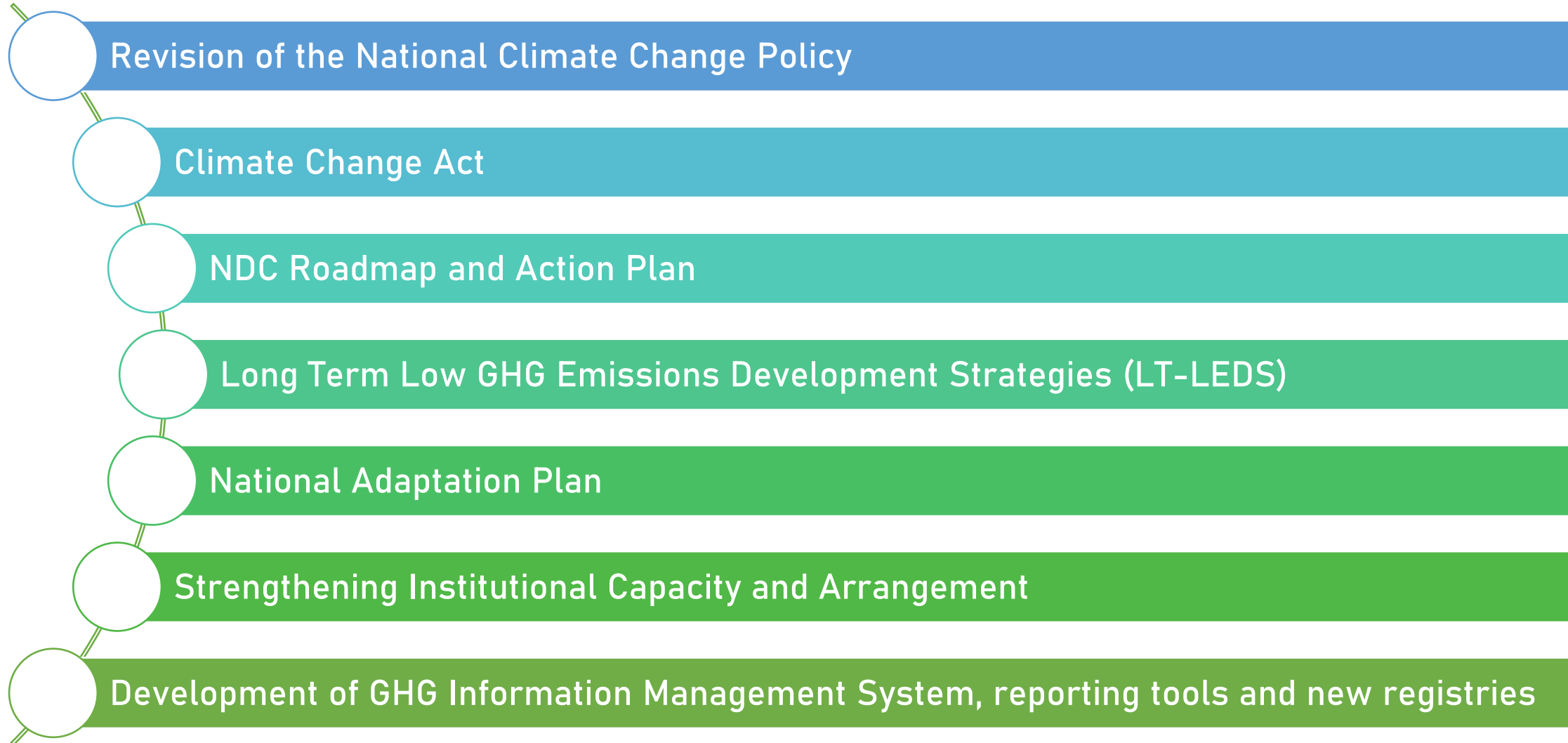
## Green Climate Fund (GCF)

- Malaysia has received readiness support to enhance its implementation framework to access results-based payment.
- Malaysia is also in the process of applying for funding to support the development of a comprehensive National Adaptation Plan (NAP).

## Multilateral & Bilateral Funding and Support from Various Sources

- UK : MIGHT, Innovate-UK; Germany; Japan: National Institute for Environmental Studies (Annual workshop on GHG inventories);
- Training Sessions : UNFCCC, CGE, IPCC ASEAN, ADB, GCF, JICA, GIZ, ECBI

# ENHANCED TRANSPARENCY FRAMEWORK (ETF)







Malaysia



THANK YOU  
[ughg.bpi@nres.gov.my](mailto:ughg.bpi@nres.gov.my)