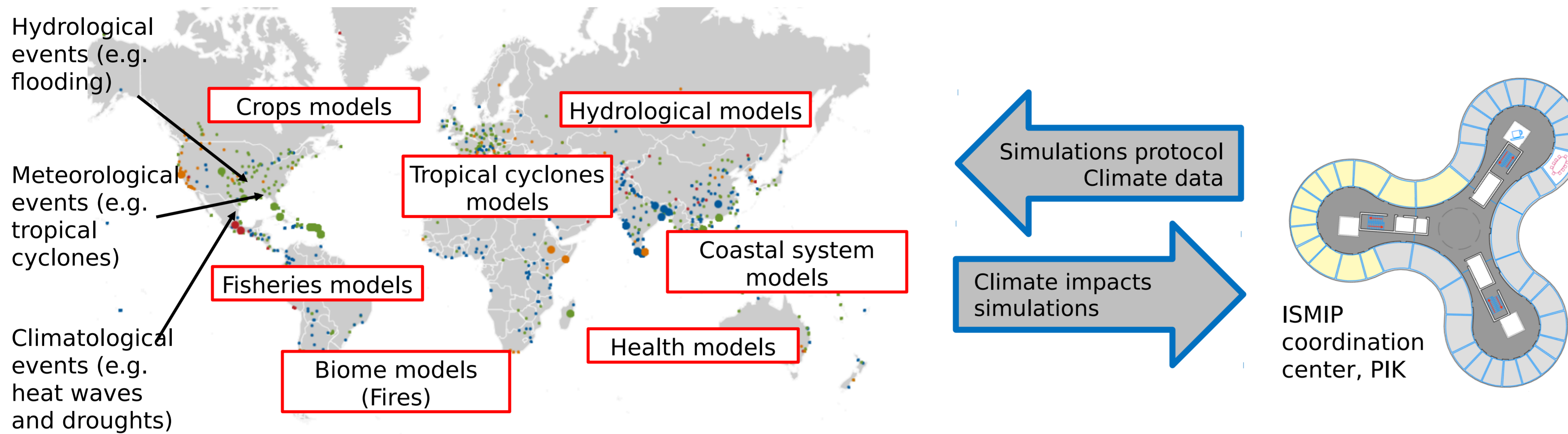


ISIMIP & ISIpedia - Inter-sectoral impact modeling and communication of national impact assessments

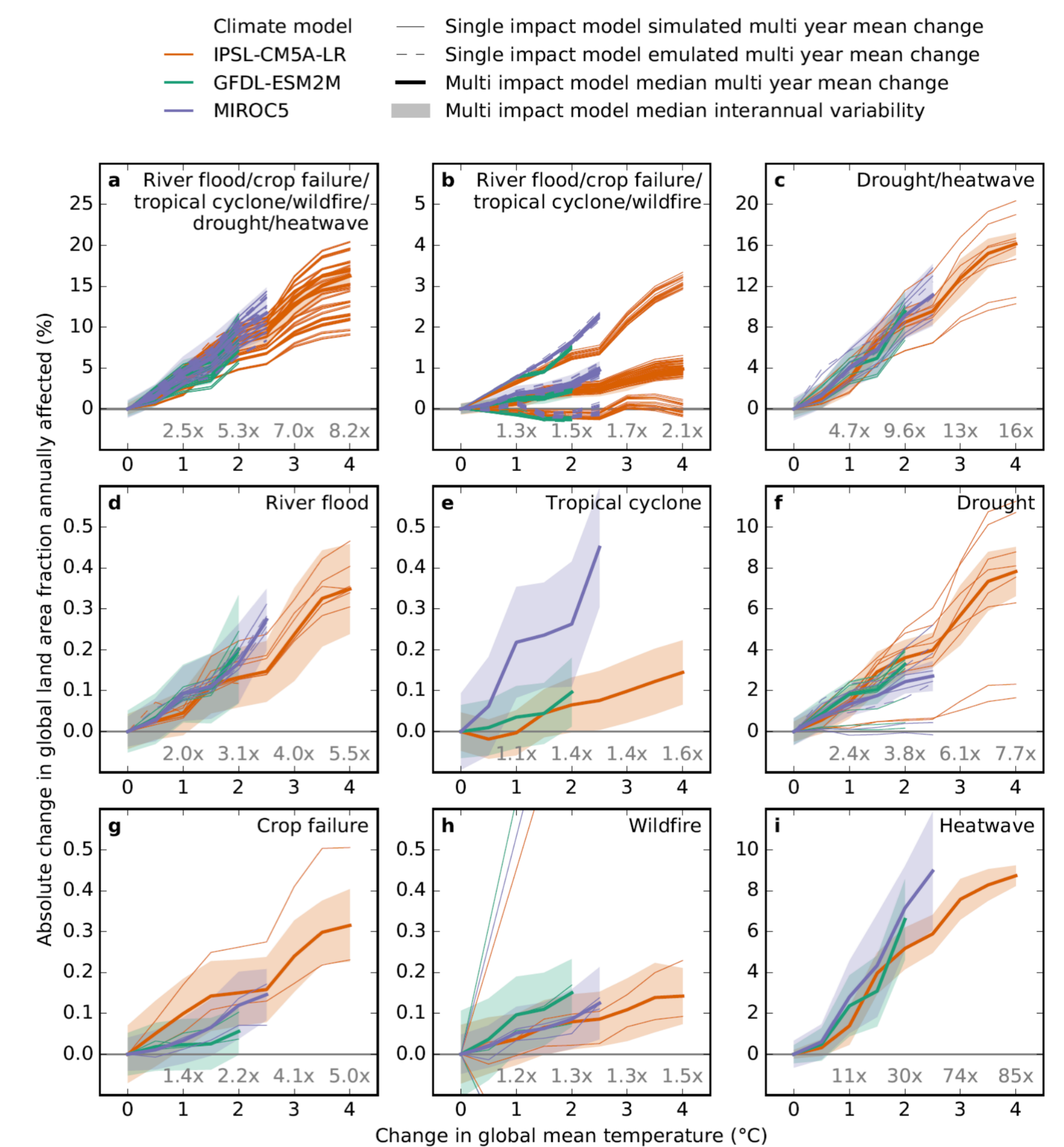
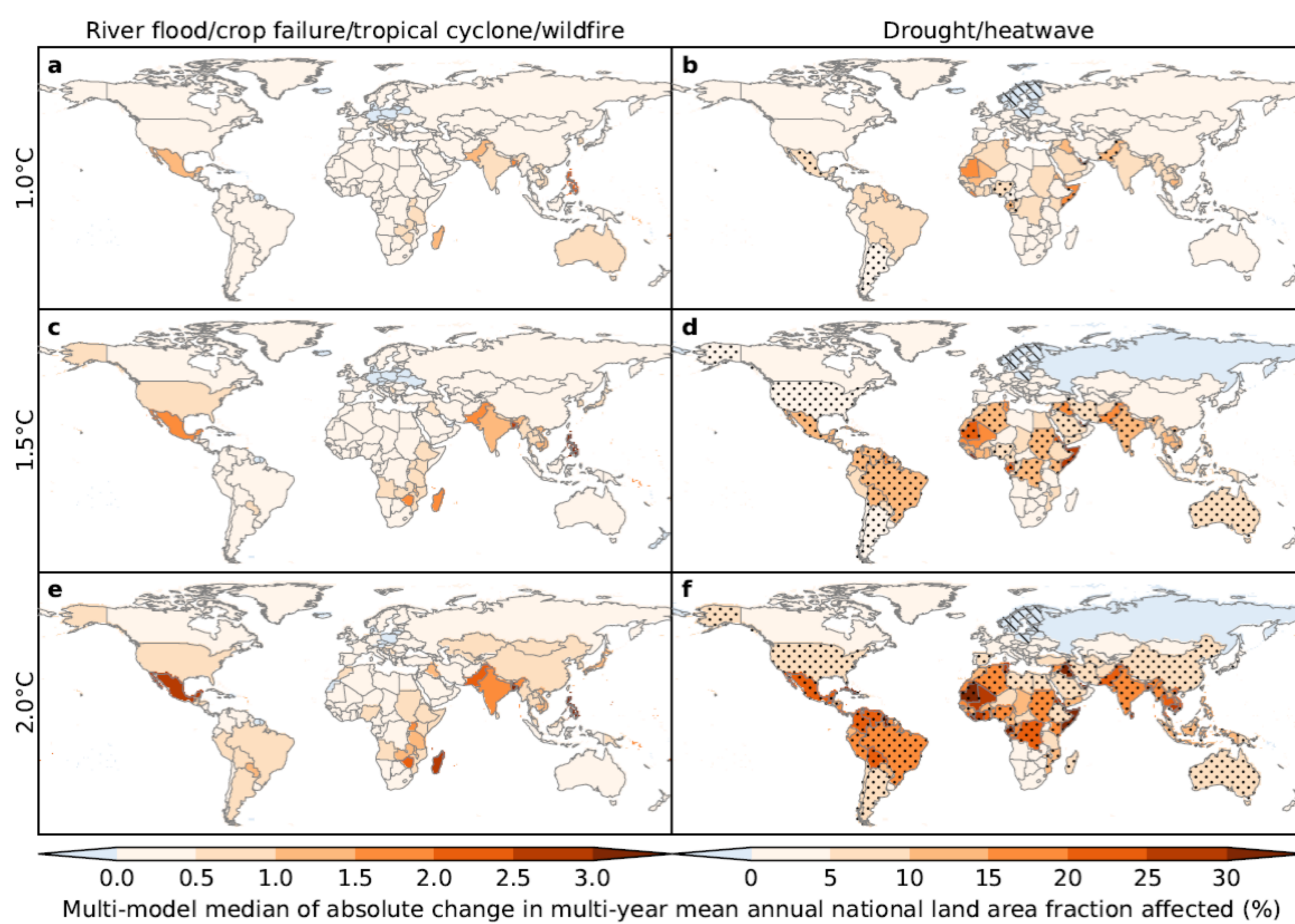
Katja Frieler, Iliusi Vega.
RD III - Transformation Pathways, Potsdam Institute for Climate Impact Research (PIK)

WORLDWIDE COORDINATED CLIMATE IMPACTS SIMULATIONS (www.isimip.org)



ISIMIP is an international initiative of climate-impact researchers who contribute with more than 130 harmonized global- and regional climate model simulations data sets, to quantify cross-sectoral climate impacts under different levels of global warming relative to pre-industrial conditions. Data is openly accessible.

DATA ANALYSIS BY INTERNATIONAL RESEARCH TEAMS



By comparing scenario simulations against no-climate-change baseline simulations, we provide a systematic quantification at the national and global level of the purely climate-induced changes in land area affected by and the number of people exposed to extreme events for 1°C (historical), 1.5°C and 2°C global warming. We quantify extreme events covering six well-defined categories: river floods, tropical cyclones, wildfires, crop failure, drought and heatwaves (Lange et al., under review).

PUBLISHING PUBLIC INFORMATION (www.isipedia.org)

These ISIMIP modeling results are prepared into country-specific assessments via relevant indicators within the framework of the ISIpedia project, in close cooperation with regional stakeholders and decision-makers. These reports are sorted according to the type of study into: future projections, attribution studies, model evaluation or country. These are made accessible on an interactive online platform.

