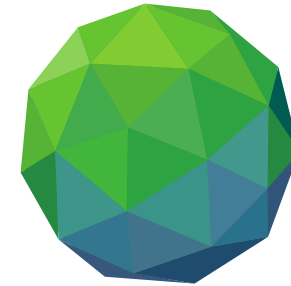


FINANCING SUSTAINABLE AND RESILIENT AGRICULTURE



GREEN
CLIMATE
FUND

Janie Rioux, Senior Agriculture and Food Security Specialist, Division of Mitigation and Adaptation

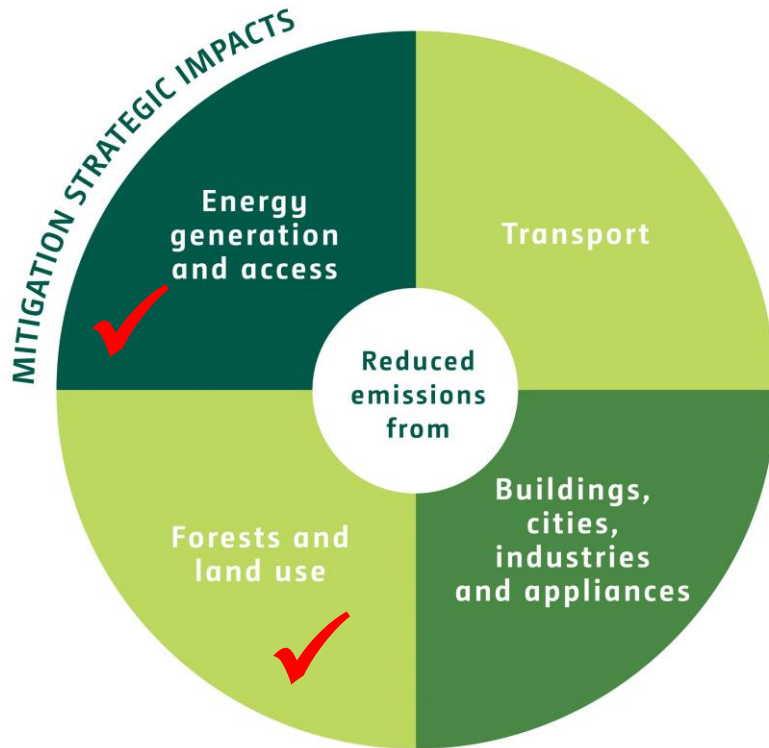
Koronivia workshop on "*Improved nutrient use and manure management towards sustainable and resilient agricultural systems*"

COP25, Madrid, 3 December 2019

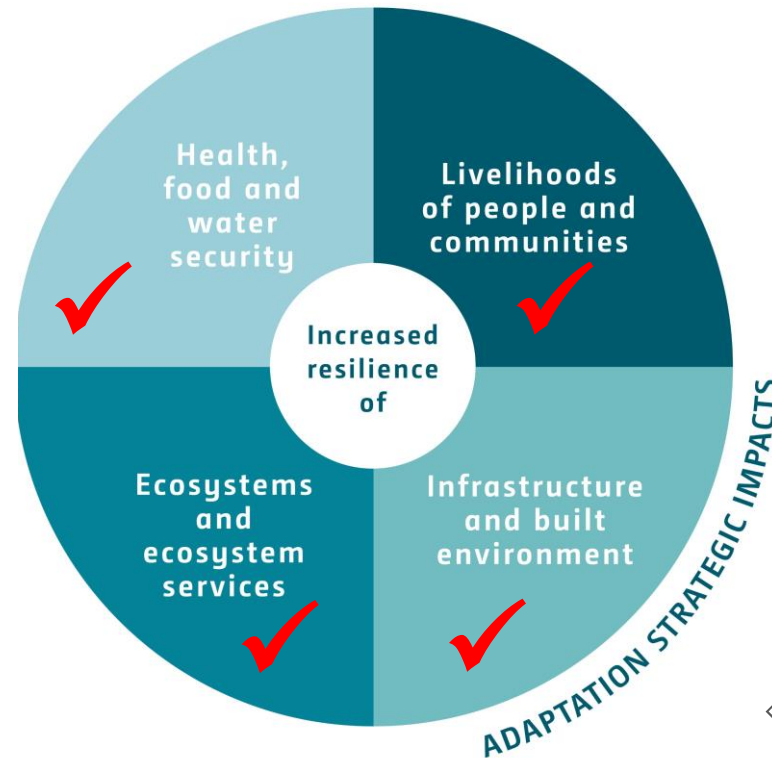
INVESTMENTS AREAS RELATED TO SUSTAINABLE & RESILIENT AGRICULTURAL SYSTEMS



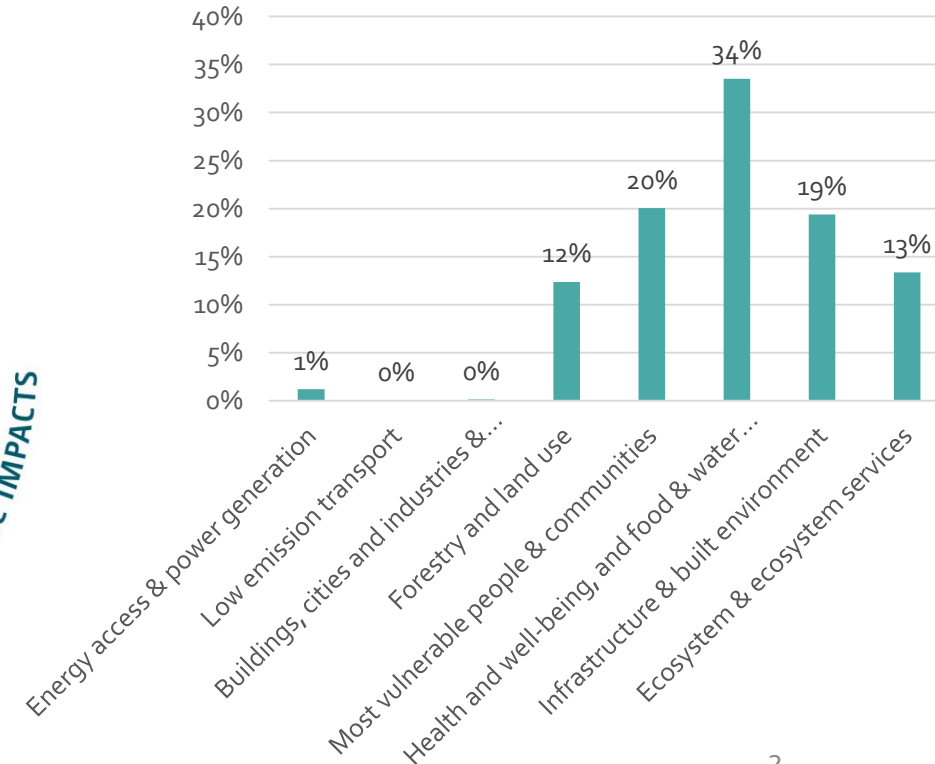
Mitigation



Adaptation



Per results area



CURRENT PORTFOLIO RELATED TO AGRICULTURE



1.1 Billion in GCF funding (20% of 5.6B)

Number of projects

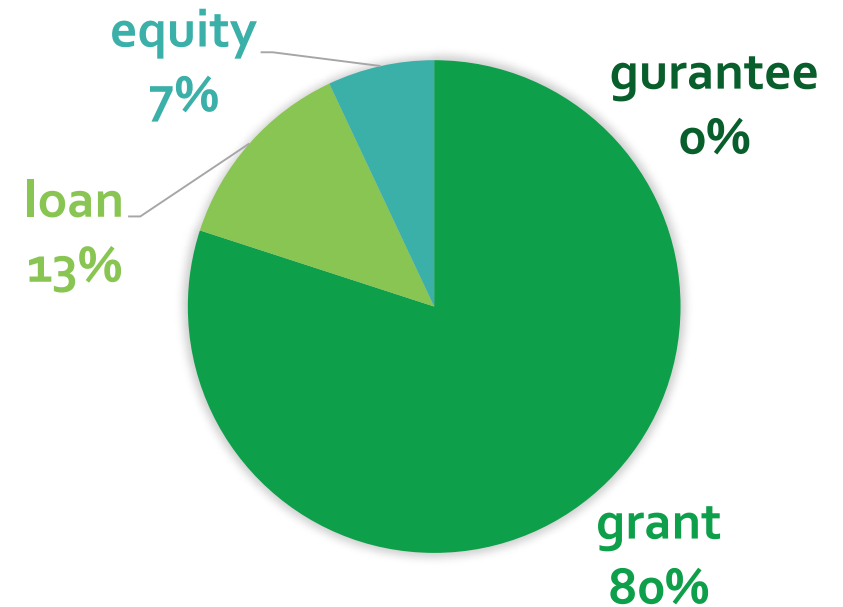


Expected impacts

75 M tCO₂ eq.

73 M beneficiaries

Financial instruments (%)



(B.24, 2019)



EXAMPLES OF PROJECT ACTIVITIES IMPROVING NUTRIENT USE

CROP LAND

Zambia (UNDP): Strengthening climate resilience of agricultural livelihoods

GCF 32M
Co-financing 105M

- Conservation agriculture (no tillage), leguminous cover cropping, intercropping and crop rotation increasing soils nutrient and water retention
- Trainings of farmers through FFS on resilient agricultural practices
- 1M people expected to become more resilient

PASTURE LAND

Kyrgyzstan (FAO): Carbon Sequestration through Climate Investment in Forests and Rangelands

GCF 30M
Co-financing 20M

- Pasture rehabilitation, and rotational grazing increasing productivity and carbon sequestration
- Tenure arrangements for rangeland management
- Monitoring of rangelands through remote sensing and field methods
- 14.9m tCO₂eq as mitigation benefit in 20 years

EXAMPLE OF PROJECT ACTIVITIES IMPROVING MANURE MANAGEMENT



CAMBODIA (ADB): Climate-Friendly Agribusiness Value Chains Sector

➤ Reducing greenhouse gas emissions and climate vulnerability of Cambodia's agricultural value chains.

- **Biogas produced** using agricultural wastes and manure, as part of National Biodigester Prog.
- **Health benefits** for 12,000 households
- **Improved nutrition** through vegetables production using bio-slurry as fertilizer
- **Reduced emissions** from i) replacement of wood with biogas for cooking, and ii) methane through improved manure management



GCF 40 M
Co-financing 100M

MEASURING PROGRESS AND CHALLENGES



- **Environmental and social safeguards** will be monitor through the ESMF/P during project implementation.
- Most projects will **measure the increase in yield and income** resulting from the sustainable and resilient agricultural practices, but fewer will measure change in soils health, water retention, and biomass change, or emissions reduction from manure mgt.
- Overall **projects are integrated** within landscapes and along value chains, include water management and climate information, and are focusing on the **impacts on people livelihoods and food systems.**
- Important to address barriers to adoption to ensure long term **sustainability and paradigm shift.**

OPPORTUNITIES FOR KORONIVIA



- **GCF is country driven and aims to turn country ambitions into climate actions, based on country NDCs.**
- **GCF Readiness Programme** can finance capacity building, studies, inter-sectoral and multi-stakeholders consultations.
- **GCF Project Preparation** can finance data collection and analysis.
- **Climate investments (projects and programmes)** can include:
 - Policies reform or implementation and incentive schemes
 - Innovative low emissions and resilient approaches and technologies
 - Monitoring and evaluation methods and MRV system

Thank you for your attention

Janie Rioux

jrioux@gcfund.org



**GREEN
CLIMATE
FUND**