



Ronald Musizvingoza
Adaptation Fund
Climate Action Week
22 April 2026



ADAPTATION FUND

LEADING ADAPTATION FINANCE,
DELIVERING TANGIBLE IMPACT

Medium-Term Strategy (2023-2027)

Theory of change

Finance concrete adaptation projects and programmes that are country driven and based on the needs, views and priorities of developing countries that particularly vulnerable to the adverse impacts of climate change.

Gender equality as cross-cutting theme

Accelerate **effective adaptation actions** and **efficient access** to finance for the most vulnerable communities in developing countries

GOAL

Protect **people, livelihoods** and **ecosystems** through climate-resilient development

VISION

Enhance **adaptative capacity**, strengthen **resilience** and **reduce vulnerability** to climate change

MISSION

STRATEGIC PILLARS

ACTION

INNOVATION

LEARNING & SHARING

All of the Fund's activities and processes are designed to:



Promote **locally led** adaptation



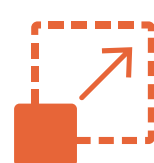
Enhance **access to climate finance** and long-term institutional **capacity**



Empower and benefit the most vulnerable people and communities as **agents of change**



Advance **gender equality**



Enable the **scaling** and **replication** of results



Strengthen **complementarity, coherence and synergies** with other adaptation funders

CROSSCUTTING THEMES





Enabling Gender-Responsive Climate Finance



COUNTRY-LED DELIVERY:

Countries lead and manage national adaptation projects through their own systems, tailored to local needs and context

DIRECT ACCESS

Pioneered the direct access approach, and 50% of portfolio reserved for direct access

INCLUSIVE DECISION-MAKING:

Direct access strengthens collaboration across government and amplifies stakeholder voices, supporting inclusive project formulation

LOCALLY-LED ADAPTATION

Strategic focus on adaptation action that devolves access and decision-making to national, subnational, and local levels

INNOVATION FOCUSED

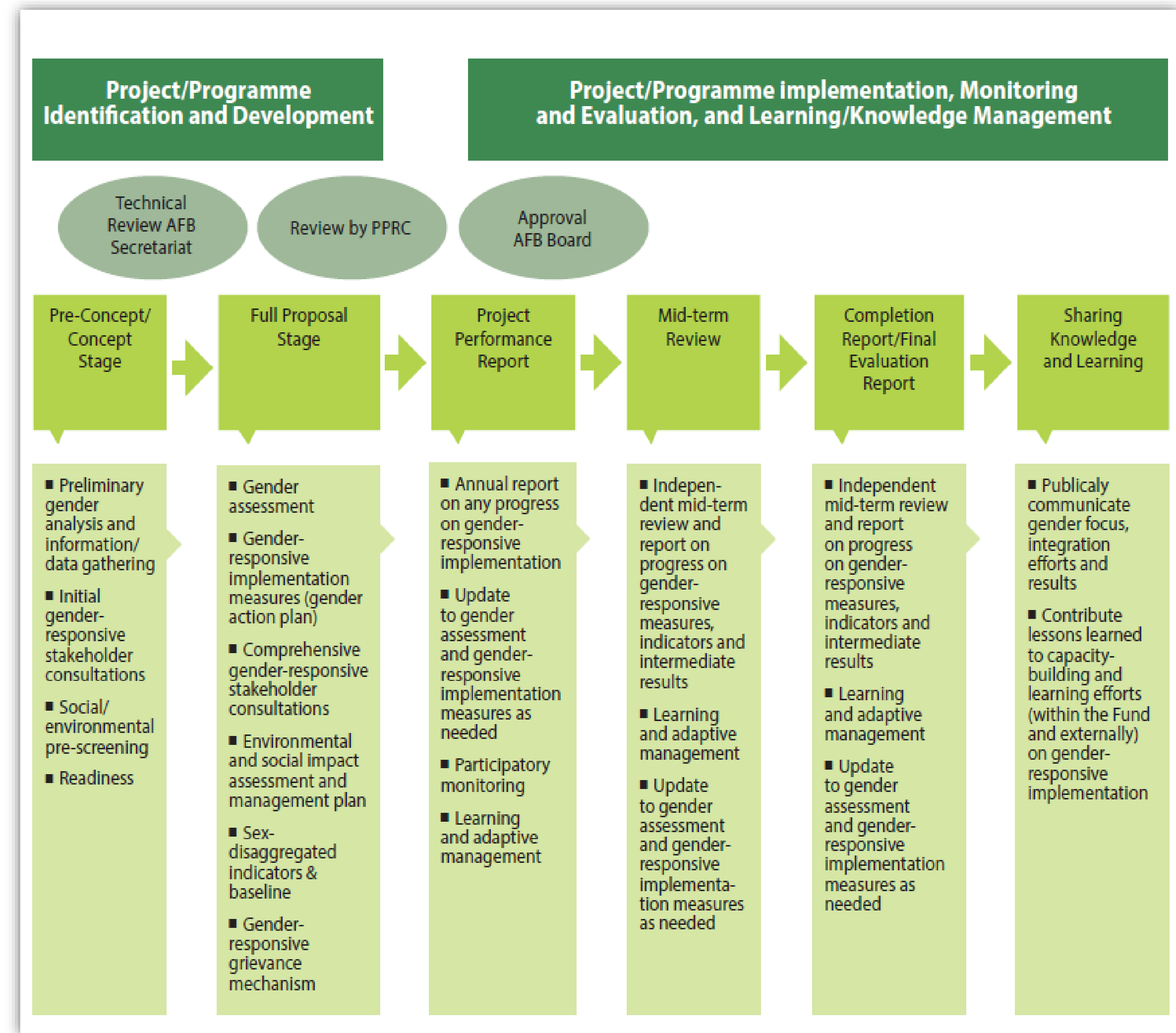
Proactively develops new, more effective ways to adapt, including pilot projects, proof-of-concept initiatives, and de-risking mechanisms

GENDER-RESPONSIVE SAFEGUARDS:

Strong environmental & social safeguards — including Gender Policy requirements — help ensure equitable access and benefits

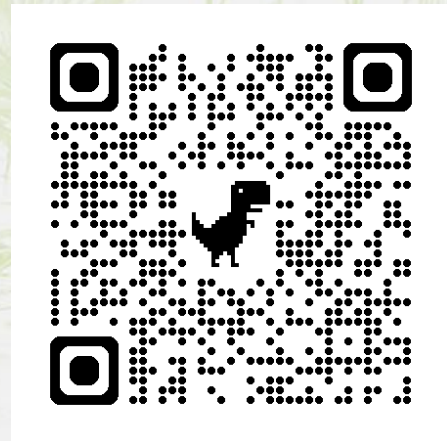
AF Gender Policy

- The Adaptation Fund applies its Gender Policy to all adaptation activities, regardless of size or entity type.
- Gender is embedded as an environmental and social safeguard ensuring equal participation and equitable benefit sharing
- Projects/programmes without articulated gender considerations shall not receive Fund resources.



Adaptation Fund

Funding Windows



PILLAR	FUNDING WINDOW	ACCREDITED ENTITY TYPE	MAXIMUM FUNDING AMOUNT
ACTION	Single Country	NIE, RIE, MIE	Up to USD 25 Million <i>per Project/Programme (within USD 40 million cap)</i>
	Regional/LLA Regional	RIE, MIE	Up to USD 30 Million <i>per Project/Programme</i>
	LLA Single Country	NIE, RIE, MIE	USD 5 Million <i>per Project/Programme</i>
	LLA Aggregator	Non-accredited	Up to USD 500,000 <i>per Grantee</i>
	Project Scale Up	NIE	USD 100,000 <i>per Grant</i>
INNOVATION	Small (single country)	NIE	USD 250,000 <i>per Project USD 750,000 with learning</i>
	Large (single country or regional)	NIE, MIE, RIE	USD 5 Million <i>per Project/Programme</i>
	Adaptation Fund Climate Innovation Accelerator	Non-accredited	Up to USD 250,000 <i>per Grantee/Innovator</i>
LEARNING & SHARING	Learning Grants	NIE	USD 500,000 <i>per Grant USD 750,000 with innovation</i>
READINESS	Readiness Support Package Grant	NIE	USD 150,000 <i>per NIE</i>
	Technical Assistance Grant for the ES & GP	NIE	USD 25,000 <i>per NIE</i>
	Technical Assistance Grant for the GP	NIE	USD 10,000 <i>per NIE</i>



Strategic Focus on Locally-Led Adaptation (LLA)

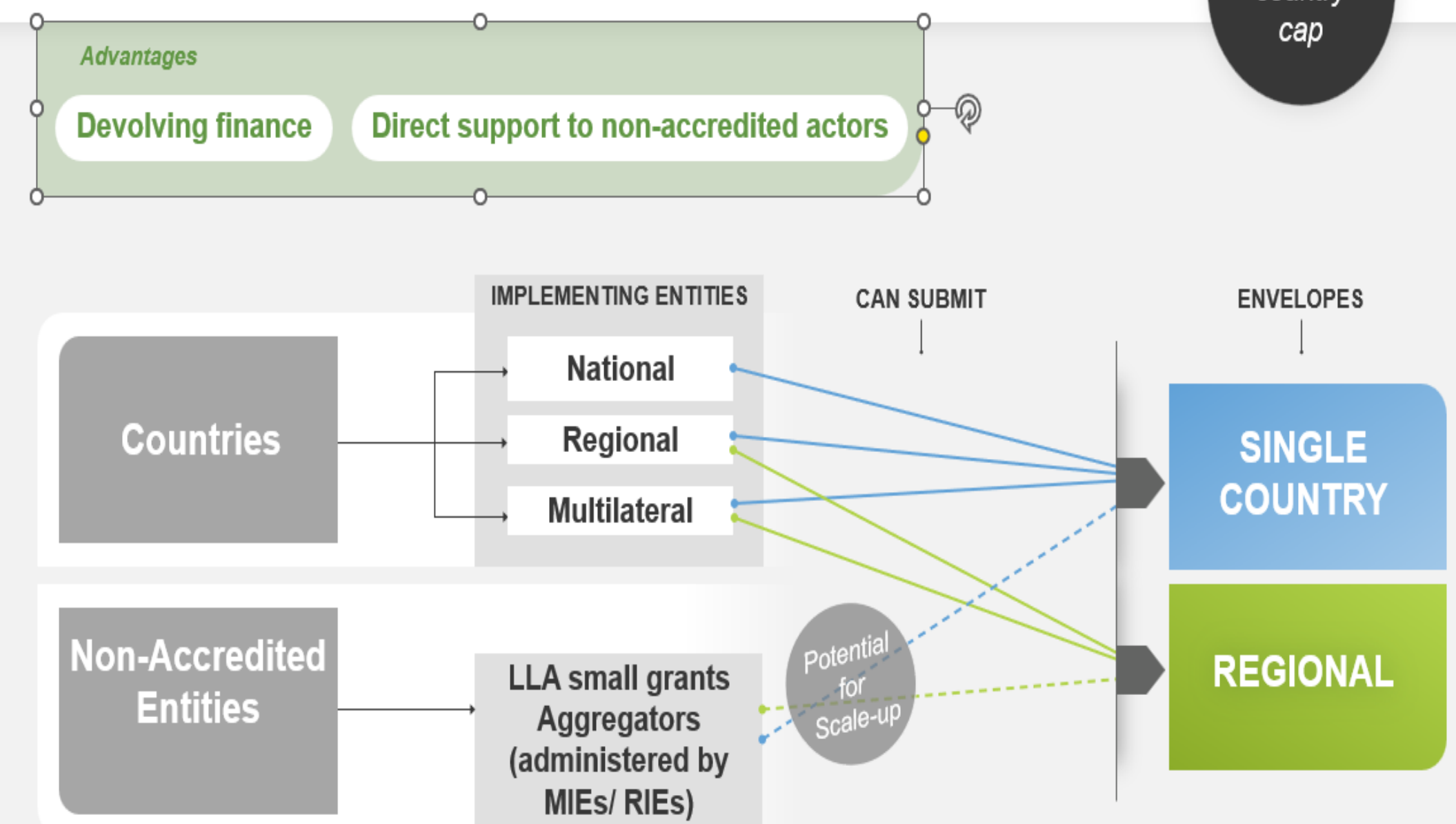
The AF MTS-II for 2023–2027 places a strong emphasis on promoting LLA, including a dedicated cross-cutting theme across all strategic objectives.

What LLA offers:

- Devolved decision-making to the *lowest appropriate level* — communities, not just governments
- LLA Aggregator window allows **non-accredited local entities** (including women's groups, CBOs, NGOs) to access funding
- New **Regional LLA Window** launched in 2025 for cross-border adaptation
- Guided by **8 LLA Principles**, including explicit attention to structural inequalities faced by women and marginalized groups

ACTION			
	Single Country	NIE, RIE, MIE	Up to USD 25 Million per Project/Programme (within USD 40 million cap)
	Regional/LLA Regional	RIE, MIE	Up to USD 30 Million per Project/Programme
	LLA Single Country	NIE, RIE, MIE	USD 5 Million per Project/Programme
	LLA Aggregator	Non-accredited	Up to USD 500,000 per Grantee

Who can submit to the Locally-Led Adaptation Funding Window



Innovation at the Adaptation Fund

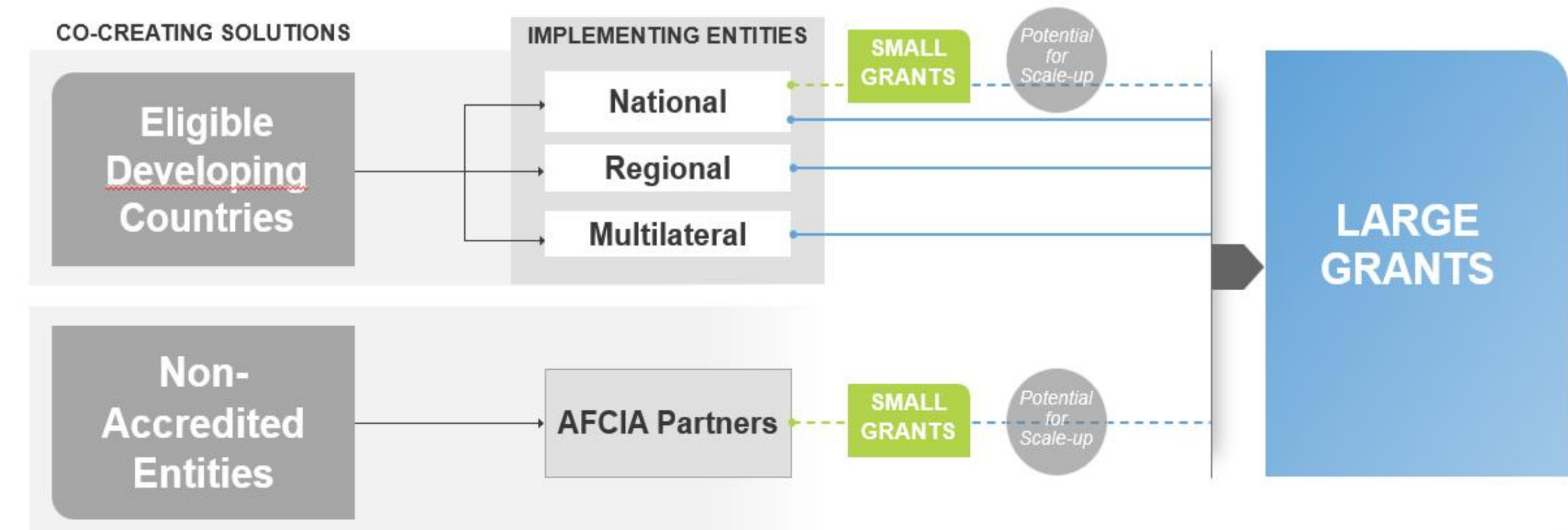
- Innovation is critical to delivering high-impact adaptation under constrained public finance.
- AF uses innovation to test, scale, and build evidence on effective adaptation solutions.
- Innovation projects carry higher risk but offer greater potential for transformative impact.
- AFCIA channels small grants to local and non-accredited actors, expanding who can access climate finance.
- This model enables gender-responsive climate financing by supporting locally designed solutions shaped by women and community stakeholders.

INNOVATION	Small (single country)	NIE	USD 250,000 <i>per Project USD 750,000 with learning</i>
	Large (single country or regional)	NIE, MIE, RIE	USD 5 Million <i>per Project/Programme</i>
	Adaptation Fund Climate Innovation Accelerator (AFCIA)	Non-accredited	Up to USD 250,000 <i>per Grantee/Innovator</i>

INNOVATION Funding Window

Types of Interventions

Pilot Demonstrate Improve New Adapted technology solutions or practices



Readiness support

Readiness: enabling gender-responsive climate finance at the institutional level

- AF Readiness supports IEs to meet ESP and Gender Policy requirements.
- Dedicated Technical Assistance grants finance capacity to assess, design, and manage gender-responsive adaptation finance.
- This ensures that gender considerations are embedded upstream, before funds are programmed and disbursed..

ESP & Gender Policy TA grants support IEs to:

- conduct gender assessments and risk screening,
- integrate gender into project design and results frameworks,
- strengthen gender-responsive safeguards and monitoring systems.

READINESS			
	Readiness Support Package Grant	NIE	USD 150,000 <i>per NIE</i>
	Technical Assistance Grant for the ES & GP	NIE	USD 25,000 <i>per NIE</i>
	Technical Assistance Grant for the GP	NIE	USD 10,000 <i>per NIE</i>





Case Study

Climate Adaptation Innovation Accelerator Programme (CAIAP)

Funding Window: Adaptation Fund Climate Innovation Accelerator (AFCIA)
Implementing Entity: World Food Programme (WFP)



Multi Regional: 10,000,000 USD

Financing Modality USPs

- Financing is delivered through Unidentified Sub-Projects (USPs)—innovation grants selected and financed during implementation.
- Only USPs with articulated gender considerations are eligible for funding.
- Gender requirements are embedded at selection, implementation, and monitoring stages.

USPs for Gender-Responsive

- Gender as a funding gate: innovations without gender considerations are not accepted.
- Targeted support: USPs are required to address differentiated needs of women, men, youth, and other vulnerable groups.
- Gender-responsive design: human-centred design and gender analysis are applied to USP innovation cycles.
- Accountability: funded USPs must include gender indicators and collect sex- and age-disaggregated data.

CAIAP (AFCIA) — Gender-Responsive Results

- 1/3 of applications were submitted by female-identifying team leads.
- Selected ventures (leadership): Early-stage 25% female leadership; Growth-stage 58% female leadership
- Bootcamp participation: 45% female / 55% male participants.
- Gender capacity building delivered: 3 gender sensitisation sessions included in bootcamp curriculum (plenary + working sessions).
- Gender-responsive MEL: 9 innovations have MEL plans that include gender mainstreaming metrics (with E&S performance metrics).

AF Gender Scorecard

What we learned: Funding windows → gender-responsive results

Evidence from FY25 Gender Scorecard (GSC): Full proposals (quality at entry) + projects (during implementation)

At entry (Full proposals): gender-responsive design

✓ **Gender analysis is robust**

95.5%

FPs identify gender risks, participation opportunities & gender relations context

≡ **Evidence is increasingly data-driven**

86.4%

FPs include general gender statistics (gender-specific: 54.5%)

∩ **Intersectionality is emerging**

59.1%

FPs explicitly consider intersectionality (room to deepen)

During implementation: gender-responsive delivery

⚙️ **Institutional arrangements in place**

94.6%

Projects report EE arrangements to comply with AF GP (IE arrangements: 91.1%)

➔ **Design translates into action**

67.9%

Projects completed gender-responsive interventions

🔄 **Learning is strong**

87.5%

Projects report lessons learned from gender-responsive interventions

Scan to download: AF Gender Scorecard





ADAPTATION FUND

THANK YOU



Website: www.adaptation-fund.org
Email: rmusizvingoza@adaptation-fund.org