



Date: 12 April 2019  
Reference: LA/Elections

## **INFORMATION TO PARTIES**

### **Nominations for the elections during the United Nations Climate Change Conferences to be held in 2019**

This is to inform Parties to the United Nations Framework Convention on Climate Change, the Kyoto Protocol and the Paris Agreement that during the United Nations Climate Change Conference to be held in Santiago, Chile, from 2 to 13 December 2019, Parties will be invited to elect the members and/or alternate members of the following bodies:

- The Bureau of the Conference of the Parties (COP), the Conference of the Parties serving as the meeting of the Parties to the Kyoto Protocol (CMP) and the Conference of the Parties serving as the meeting of the Parties to the Paris Agreement (CMA);
- The Bureau of the Subsidiary Body for Scientific and Technological Advice (SBSTA);
- The Bureau of the Subsidiary Body for Implementation (SBI);
- The Adaptation Committee (AC);
- The Adaptation Fund Board (AFB);
- The Advisory Board of the Climate Technology Centre and Network (CTCN Advisory Board);
- The Compliance Committee under the Kyoto Protocol;
- The Committee to facilitate implementation and promote compliance referred to in Article 15.2 of the Paris Agreement;
- The Consultative Group of Experts (CGE);
- The Executive Board of the Clean Development Mechanism (CDM EB);
- The Executive Committee of the Warsaw International Mechanism for Loss and Damage associated with Climate Change Impacts (WIM Excom);
- The Joint Implementation Supervisory Committee (JISC);
- The Paris Committee on Capacity-building (PCCB);
- The Technology Executive Committee (TEC).

**Distribution:** To Parties through National Focal Points for climate change, Permanent Representatives to the United Nations in New York and diplomatic missions accredited to the Federal Republic of Germany. The Notification is also available on the UNFCCC website at the following link:  
<https://unfccc.int/process/bodies/the-big-picture/election-and-membership>.



Page 2

Subject to the outcomes of the negotiations on Article 6 of the Paris Agreement, Parties may also be invited to elect the members of the supervisory body for the mechanism established by Article 6, paragraph 4, of the Paris Agreement.

Information on those positions open for election or appointment, as appropriate, in 2019 is contained in annex I of this information note.

Further to the communication to Parties dated 28 January 2019, the secretariat urges Parties to reach agreement on 43 nominations that are outstanding, including those from the elections held in 2018 and those that are due to recent resignations, for the following bodies:

- The Bureau of the COP, CMP and CMA;
- The AFB;
- The CGE;
- The Compliance Committee under the Kyoto Protocol;
- The CTCN Advisory Board;
- The JISC;
- The Katowice Committee of Experts on the Impacts of the Implementation of Response Measures (KCI);
- The Local Communities and Indigenous Peoples Platform Facilitative Working Group (FWG);
- The Standing Committee on Finance; and
- The WIM Excom.

Information on these outstanding nominations are available on the UNFCCC website at the following link: <https://unfccc.int/process-and-meetings/bodies/election-and-membership>.

Chairs and Coordinators of regional groups and constituencies are strongly urged to transmit these nominations, in particular for the FWG and KCI, as soon as possible and before the Climate Change Conference to be held in June 2019. The nominations to these two bodies require particular urgency as the first meetings of the FWG and the KCI are mandated to take place in conjunction with the sessions of the subsidiary bodies to be convened in June 2019.

Parties are also invited to recall decision 3/CP.23 and make additional efforts to improve the participation of women and achieve the goal of gender balance in bodies established under the Convention, the Kyoto Protocol and the Paris Agreement. To date, a gender balance of 29% has been achieved on the membership of all bodies. Information on the gender composition of all bodies is contained in annex II of this information note.

Further information on the UNFCCC Electoral Process (including an overview, a step-by-step guide on nominations, membership of bodies, and other general information) is available on the UNFCCC website at the following link: <https://unfccc.int/process-and-meetings/bodies/the-big-picture/election-and-membership>.



Page 3

Chairs and Coordinators of regional groups and constituencies are also invited to transmit the nominations for the elections to be held during the Climate Change Conference in December by the deadline of 8 p.m., Friday, 6 December 2019. Chairs and Coordinators are strongly urged to transmit those nominations that are agreed within their groups or constituencies well before the deadline.

For any questions or for further information on elections, please contact the secretariat at: [elections@unfccc.int](mailto:elections@unfccc.int).

Yours sincerely,

*(Signed by)*

Patricia Espinosa



Annex I

**INFORMATION ON THE POSITIONS OPEN FOR ELECTION  
FOR BODIES ESTABLISHED UNDER THE CONVENTION, THE KYOTO PROTOCOL  
AND THE PARIS AGREEMENT**

**A. The Bureau of the COP, CMP and CMA**

1. The draft rules of procedure of the COP, being applied, state that: “At the commencement of the first meeting of each ordinary session, a President, seven Vice-Presidents, the Chairmen of the subsidiary bodies established by Articles 9 and 10 of the Convention, and a Rapporteur shall be elected from among the representatives of the Parties present at the session. They will serve as the Bureau of the session. Each of the five regional groups shall be represented by two Bureau members and one Bureau member shall represent the small island developing states. The offices of President and Rapporteur shall normally be subject to rotation among the five regional groups.” No officer may serve on the Bureau for more than two consecutive terms of one year.<sup>1</sup>

2. The Kyoto Protocol provides that: “When the Conference of the Parties serves as the meeting of the Parties to the Kyoto Protocol, any member of the Bureau of the Conference of the Parties representing a Party to the Convention but, at that time, not a Party to this Protocol, shall be replaced by an additional member to be elected by and from amongst the Parties to this Protocol”.<sup>2</sup>

3. The Paris Agreement also provides that: “When the Conference of the Parties serves as the meeting of the Parties to the Paris Agreement, any member of the Bureau of the Conference of the Parties representing a Party to the Convention but at that time, not a Party to this Agreement, shall be replaced by an additional member to be elected by and from amongst the Parties to this Agreement”.<sup>3</sup>

4. At COP 25, eleven (11) members of the Bureau of the COP, CMP and CMA, nominated by the following groups and SIDS, will be elected to serve for a term of one year:

- Two members nominated by the Group of African States (Africa);
- Two members nominated by the Group of Asia-Pacific (Asia-Pacific);
- Two members nominated by the Group of Eastern European States (Eastern Europe);
- Two members nominated by the Group of Latin America and Caribbean States (GRULAC);
- Two members nominated by the Group of Western European and Others States (WEOG); and
- One member nominated by the Small Island Developing States (SIDS).

5. At the opening of COP 25, the COP will be invited to elect the President of COP 25, CMP 15 and CMA 2. In keeping with the principle of rotation among regional groups provided in rule 22, paragraph 1, of the draft rules of procedure, GRULAC will nominate the President of COP 25, CMP 15 and CMA 2.

---

<sup>1</sup> See rule 22, paragraphs 1 and 2, of the draft rules of procedure of the COP (document FCCC/CP/1996/2).

<sup>2</sup> See Article 13, paragraph 3, of the Kyoto Protocol.

<sup>3</sup> See Article 16, paragraph 3, of the Paris Agreement.



6. Further to the Rotation Mechanism for the office of the COP Rapporteur endorsed by the Bureau in September and October 2018, Africa will nominate a candidate for election as Rapporteur.<sup>4</sup>
7. At the closure of the session, the COP will be invited to elect the other members of the Bureau for a one-year term.
8. If any member of the Bureau represents a State that is not a Party to the Kyoto Protocol at CMP 15, the CMP will be invited to elect an additional member from amongst Parties to the Kyoto Protocol to replace such member. Further, if any member of the Bureau represents a State that is not a Party to the Paris Agreement at CMA 2, the CMA will be invited to elect an additional member from amongst Parties to the Paris Agreement to replace such member.

**B. The Bureaux of the Subsidiary Body for Scientific and Technological Advice (SBSTA) and the Subsidiary Body for Implementation (SBI)**

9. The draft rules of procedure of the COP provide that each subsidiary body shall elect its own Vice-Chair and Rapporteur.<sup>5</sup> The Kyoto Protocol further provides that: “When the subsidiary bodies established by Articles 9 and 10 of the Convention exercise their functions with regard to matters concerning this Protocol, any member of the Bureaux of those subsidiary bodies representing a Party to the Convention but, at that time, not a party to this Protocol, shall be replaced by an additional member to be elected by and from amongst the Parties to this Protocol”.<sup>6</sup> The Paris Agreement also provides that: “When the subsidiary bodies established by Articles 9 and 10 of the Convention exercise their functions with regard to matters concerning this Agreement, any member of the Bureaux of those subsidiary bodies representing a Party to the Convention but, at that time, not a party to this Agreement, shall be replaced by an additional member to be elected by and from amongst the Parties to this Agreement”.<sup>7</sup>
10. The SBI, at its 50<sup>th</sup> session (June 2019) (SBI 50), will be invited to elect its Vice-Chairs and Rapporteurs for a one-year term.
11. The SBSTA, at its 51<sup>th</sup> session (December 2019), will be invited to elect its Vice-Chair and Rapporteur for a one-year term.

---

<sup>4</sup> See the Rotation Mechanism for the office of the COP Rapporteur available at: <https://unfccc.int/process/bodies/the-big-picture/election-and-membership/warsaw-international-mechanism-for-loss-and-damage-executive-committee-associated-with-climate-change-impacts>.

<sup>5</sup> See rule 27, paragraphs 1 and 6, of the draft rules of procedure of the COP.

<sup>6</sup> See Article 15, paragraph 3, of the Kyoto Protocol.

<sup>7</sup> See Article 18, paragraph 3, of the Paris Agreement.



### **C. The Adaptation Committee (AC)**

12. The AC comprises 16 members, nominated by Parties through their respective Chairs and Coordinators of groups and constituencies and elected by the COP to serve for a term of two years in their personal capacity. Members are eligible to serve a maximum of two consecutive terms of office and remain in office until their successors have been elected.<sup>8</sup>

13. The COP will be invited to elect eight (8) members to the AC for a two-year term, as follows:

- Two members nominated by Africa;
- One member nominated by Asia-Pacific;
- Two members nominated by Eastern Europe;
- One member nominated by WEOG;
- One member nominated by Parties included in Annex I to the Convention (Annex I Parties); and
- One member nominated by Parties not included in Annex I to the Convention (Non-Annex I Parties).

14. Chairs and Coordinators of groups and constituencies are encouraged to nominate experts with a diversity of experience and knowledge relevant to adaptation to climate change, while also taking into account the need to achieve gender balance in accordance with decisions 3/CP.23.

### **D. The Adaptation Fund Board (AFB)**

15. The AFB comprises 16 members and their alternates, nominated by the relevant Chairs and Coordinators of groups and constituencies and elected by the CMP to serve for a term of two years as representatives of their respective groups or constituencies. Members and alternate members are eligible to serve a maximum of two consecutive terms.<sup>9</sup> Terms served as members do not count towards the terms served as alternate members, and terms served as alternate members do not count towards the terms served as members.<sup>10</sup>

16. At CMP 14, the CMP noted the CMA decision that the Adaptation Fund shall serve the Paris Agreement, and decided to ensure that developing country Parties and developed country Parties that are Parties to the Paris Agreement are eligible for membership on the Adaptation Fund Board.<sup>11</sup> The CMP requested SBI 50 to consider this matter and forward a recommendation to CMP 15.<sup>12</sup>

---

<sup>8</sup> See paragraph 106, decision 2/CP.17.

<sup>9</sup> See paragraph 8, decision 1/CMP.3.

<sup>10</sup> See paragraph 16, decision 1/CMP.4.

<sup>11</sup> See paragraphs 1 and 4 of decision 1/CMP.14.

<sup>12</sup> See paragraph 5 of decision 1/CMP.14.



17. Without prejudice to the SBI recommendation outlined above, the CMP will be invited to elect eight (8) members and their alternate members to the AFB for a two-year term, as follows:

- One member and one alternate member nominated by Africa;
- One member and one alternate member nominated by Asia-Pacific;
- One member and one alternate member nominated by Eastern Europe;
- One member and one alternate member nominated by GRULAC;
- One member and one alternate member nominated by WEOG;
- One member and one alternate member nominated by LDCs;
- One member and one alternate member nominated by Annex I Parties; and
- One member and one alternate member nominated by Non-Annex I Parties.

18. Chairs and Coordinators of groups and constituencies are invited to transmit nominations to the AFB bearing in mind that the members and alternate members of the Board shall have the appropriate technical, adaptation and/or policy expertise.<sup>13</sup>

#### **E. The Advisory Board of the Climate Technology Centre and Network (CTCN)**

19. The CTCN Advisory Board comprises 16 government representatives, nominated by their respective constituencies and elected by the COP to serve for a term of two years as representatives of their respective groups or constituencies. Government representatives are eligible to serve a maximum of two consecutive terms of office and remain in office until their successors are elected.<sup>14</sup> Further, on 7 December 2012, the Chairs and Coordinators of Non-Annex I Parties constituencies reached an agreement on the distribution and rotation of representatives of Non-Annex I Parties on the Board.<sup>15</sup>

20. The COP will be invited to elect eight (8) government representatives to the CTCN Advisory Board for a two-year term, as follows:

- Four government representatives nominated by Non-Annex I Parties as follows:
  - One member from Africa;
  - One member from Asia-Pacific;
  - One member from GRULAC; and
  - One member from Non-Annex I Parties.
- Four government representatives nominated by Annex I Parties.

21. Chairs and Coordinators of groups and constituencies are encouraged to nominate government representatives to the Advisory Board with a view to achieving an appropriate balance of expertise relevant to the development and transfer of technologies for adaptation and mitigation, taking into account the need to achieve gender balance in accordance with decision 3/CP.23.

---

<sup>13</sup> See paragraph 8, decision 1/CMP.3.

<sup>14</sup> See paragraph 5 of Annex II, decision 14/CP.18.

<sup>15</sup> See rotation agreement regarding the CTCN Advisory Board available at: <https://unfccc.int/process/bodies/the-big-picture/election-and-membership/warsaw-international-mechanism-for-loss-and-damage-executive-committee-associated-with-climate-change-impacts>.



**F. The Committee to facilitate implementation and promote compliance referred to in Article 15, paragraph 2, of the Paris Agreement**

22. The Paris Agreement provides that the mechanism referred to in Article 15, paragraph 1, of the Agreement shall consist of a committee that shall be expert-based and facilitative in nature and function in a matter that is transparent, non-adversarial and non-punitive.<sup>16</sup>

23. At CMA 2, the CMA decided that the committee referred to in Article 15, paragraph 2, of the Paris Agreement shall consist of 12 members and an alternate for each member, on the basis of equitable geographical representation while taking into account the goal of gender balance and taking into account the expert-based nature of the Committee and striving to reflect the diversity of expertise.<sup>17</sup> Members and alternate members shall be elected to the Committee to serve in their individual capacity for a period of three years and for a maximum of two consecutive terms.<sup>18</sup> Members and alternate members shall remain in office until their successors are elected.<sup>19</sup>

24. The CMA will be invited to elect six (6) members and their alternate members to the Committee for an initial two-year term, and six (6) members and their alternate members for an initial three-year term, respectively, as follows:

- Two members and two alternates from Africa;
- Two members and two alternates from Asia-Pacific;
- Two members and two alternates from Eastern Europe;
- Two members and two alternates from GRULAC;
- Two members and two alternates from WEOG;
- One member and one alternate from SIDS; and
- One member and one alternate from LDCs.<sup>20</sup>

**G. The Compliance Committee under the Kyoto Protocol**

25. The Compliance Committee under the Kyoto Protocol comprises 20 members and 20 alternate members, nominated by the relevant groups/constituencies and elected by the CMP to serve in their personal capacity. Ten members and their alternates are elected to serve on the facilitative branch, and 10 members and their alternates are elected to serve on the enforcement branch. Every two years the CMP elects, for each branch, 5 members and 5 alternate members for a term of four years. Members shall not serve for more than two consecutive terms. The length of term for each member of the Compliance Committee also applies to his or her alternate member and alternate members are not to serve for more than two consecutive terms as alternate members.

---

<sup>16</sup> See Article 15, paragraph 2, of the Paris Agreement.

<sup>17</sup> See paragraphs 5 and 6 of the annex of decision 20/CMA.1.

<sup>18</sup> See paragraphs 7 and 10 of the annex of decision 20/CMA.1.

<sup>19</sup> See paragraph 8 of the annex of decision 20/CMA.1.

<sup>20</sup> See paragraph 7 of the annex of decision 20/CMA.1.





26. The CMP will be invited to elect five (5) members and their alternate members on each branch of the Compliance Committee for a four-year term, as follows:

- One member and one alternate member nominated by Eastern Europe;
- One member and one alternate member nominated by WEOG;
- One member and one alternate member nominated by SIDS;
- One member and one alternate member nominated by Annex I Parties;
- One member and one alternate member nominated by Non-Annex I Parties.

27. The CMP will also be invited to elect an alternate member nominated by Annex I Parties to replace an alternate member who resigned in 2019.

28. Groups/constituencies are invited to submit nominations, including a brief curriculum vitae of each individual nominated, bearing in mind the agreed competencies of the members of the respective branches of the Compliance Committee, in particular:

- (a) That the members and alternate members of the facilitative branch shall have recognized competencies relating to climate change and in relevant fields such as the scientific, technical, socio-economic or legal fields;
- (b) That the members and alternate members of the enforcement branch shall have legal experience.

29. Parties are reminded that the nature of the Compliance Committee and the particular design and function of the procedures and mechanisms require, for their effective functioning and for the quorum to be met, the availability of members and alternate members for meetings at very short notice (one to two weeks).

#### **H. The Consultative Group of Experts (CGE)**

30. The CGE comprises twenty-one (21) members nominated by Parties to the Convention for a period of two years and shall serve a maximum of two consecutive terms as representatives of their respective groups or constituencies. In addition, three experts to the CGE are nominated by three international organizations with relevant experience in providing technical assistance to non-Annex I Parties in the preparation of national communications.

31. At COP 24, the COP decided to extend the term of the Consultative Group of Experts on National Communications from Parties not included in Annex I to the Convention for eight years, from 1 January 2019 to 31 December 2026, and to rename it the Consultative Group of Experts (CGE).<sup>21</sup>

---

<sup>21</sup> See paragraph 1 of decision 11/CP.24.



32. Chairs and Coordinators of groups and constituencies will be invited to nominate six (6) members for appointment to the CGE for a two-year term, as follows:

- 1 member from Africa;
- 3 members from Asia-Pacific;
- 2 members from Annex I Parties.

### **I. The Executive Board of the Clean Development Mechanism (CDM)**

33. The CDM Executive Board comprises 10 members and 10 alternate members, nominated by the relevant Chairs and Coordinators of groups and constituencies and elected by the CMP to serve for a term of two years in their personal capacity. Members and alternate members are eligible to serve a maximum of two consecutive terms and remain in office until their successors are elected. Terms served as members do not count towards the terms served as alternate members, and terms served as alternate members do not count towards the terms served as members.<sup>22</sup> Further, on 11 November 2001, the Chairs and Coordinators of the regional groups of Africa, Asia-Pacific and GRULAC reached an agreement on the distribution and rotation of representatives of Non-Annex I Parties on the Board.<sup>23</sup>

34. The CMP will be invited to elect five (5) members and their alternate members to the Executive Board for a two-year term, as follows:

- One member and one alternate member nominated by Eastern Europe;
- One member and one alternate member nominated by SIDs;
- One member and one alternate member nominated by Annex I Parties;
- Two members and two alternate members nominated by Non-Annex I Parties as follows:
  - Two alternate members from Africa;
  - One member from Asia-Pacific; and
  - One member from GRULAC.

35. Chairs and Coordinators of groups and constituencies are invited to transmit nominations, bearing in mind the skills and expertise required of members and alternates sitting on the CDM Executive Board, as decided by the CMP, in particular that all members and alternate members of the Board should:

- (a) Have experience and competence in developing policy and strategy frameworks within regulatory processes, preferably but not necessarily in an international environment;
- (b) Have an understanding of business perspectives regarding investment in the environmental field;
- (c) Have knowledge on and an understanding of the intergovernmental process in relation to climate change or other environmental agreements, and an appreciation of the nexus of actions to combat climate change and promote sustainable development;

---

<sup>22</sup> See rules 3 and 4 of the rules of procedure of the CDM Executive Board.

<sup>23</sup> See rotation agreement regarding the CDM Executive Board available at: <https://unfccc.int/process/bodies/the-big-picture/election-and-membership/warsaw-international-mechanism-for-loss-and-damage-executive-committee-associated-with-climate-change-impacts>.



- (d) Be prepared to obtain further knowledge on and understanding of decisions of the CMP relevant to the CDM and guidance previously established by the Board;
- (e) Exhibit the highest levels of professionalism and competence and a commitment to act in their individual capacities and in a manner consistent with the Board's code of conduct;
- (f) Show commitment to the effective management of the CDM and to working as a team with other members and alternate members, including in relation to reaching consensus;
- (g) Have competence in English (written and oral).<sup>24</sup>

#### **J. The Executive Committee of the Warsaw International Mechanism for Loss and Damage associated with Climate Change Impacts (WIM Excom)**

36. The WIM Excom comprises 20 members, nominated by the relevant Chairs and Coordinators of groups and constituencies. Each year, 10 members are elected to serve for a term of two years as representatives of their respective groups or constituencies. Members of the WIM Excom may be eligible to serve a maximum of two consecutive terms.<sup>25</sup> Further, on 15 February 2015, the Chairs and Coordinators of Non-Annex I Parties constituencies reached an agreement on the distribution and rotation of representatives of Non-Annex I Parties on the WIM Excom.<sup>26</sup>

37. Article 8, paragraph 2, of the Paris Agreement provides that the Warsaw International Mechanism (WIM) shall be subject to the authority and guidance of the CMA. At COP 24, while the COP was invited to consider the matter of its authority over and guidance to the WIM, including its Executive Committee, it noted the understanding among Parties that under the agenda item on the WIM at that session, the COP would consider only the report of the WIM Excom without prejudging outcomes of future consideration of the governance of the WIM. At that session, the COP elected the members of the WIM Excom.<sup>27</sup>

38. Unless otherwise specified by Parties and without prejudging the consideration of the WIM governance, the CMA will be invited to elect ten (10) members to the WIM Excom for a two-year term, as follows:

- Five members nominated by Non-Annex I Parties as follows:
  - One member from Africa;
  - One member from Asia-Pacific;
  - One member from GRULAC; and
  - Two members from Non-Annex I Parties.
- Five members nominated by Annex I Parties.

39. Chairs and Coordinators of groups and constituencies are encouraged to nominate members with the diversity of experience and knowledge relevant to loss and damage associated with climate change impacts, taking into account the goal of gender balance pursuant to decision 3/CP.23.<sup>28</sup>

---

<sup>24</sup> See annex I to decision 3/CMP.6.

<sup>25</sup> See paragraphs 5 and 7, decision 2/CP.20.

<sup>26</sup> See rotation agreement regarding the WIM Excom available at: <https://unfccc.int/process/bodies/the-big-picture/election-and-membership/warsaw-international-mechanism-for-loss-and-damage-executive-committee-associated-with-climate-change-impacts>.

<sup>27</sup> See COP 24 report, paragraphs 82 to 85 of document FCCC/CP/2018/10.

<sup>28</sup> See paragraphs 5 and 6, decision 2/CP.20.



### **K. The Joint Implementation Supervisory Committee (JISC)**

40. The JISC comprises 10 members and 10 alternate members, nominated by the relevant Chairs and Coordinators of groups and constituencies and elected by the CMP to serve for a term of office of two years in their personal capacity. Members and alternate members of the JISC are eligible to serve a maximum of two consecutive terms and remain in office until their successors are elected. Terms served as members do not count towards the terms served as alternate members, and terms served as alternate members do not count towards the terms served as members.<sup>29</sup>

41. The CMP will be invited to elect five (5) members and their alternate members to the JISC for a two-year term, as follows:

- One member and one alternate member nominated by Annex I Parties;
- One member and one alternate member nominated by Annex I Parties that are undergoing the process of transition to a market economy (Annex I EITs Parties);
- Two members and two alternate members nominated by Non-Annex I Parties; and
- One member and one alternate member nominated by SIDs.

42. Chairs and Coordinators of groups and constituencies are invited to transmit nominations, bearing in mind that members and alternate members of the JISC shall have recognized competence relating to climate change issues and in relevant technical and policy fields,<sup>30</sup> and the expected time commitments required of members and alternates sitting on the JISC.<sup>31</sup>

### **L. The Paris Committee on Capacity-Building (PCCB)**

43. The PCCB comprises 12 members, nominated by the relevant Chairs and Coordinators of groups and constituencies and elected by the COP. Members and alternate members of the PCCB are eligible to serve a maximum of two consecutive terms as representatives of their respective groups or constituencies.<sup>32</sup>

44. At COP 25, the COP will review the progress, need for extension, the effectiveness and enhancement of the PCCB and take any action it considers appropriate.<sup>33</sup>

---

<sup>29</sup> See rule 4 of the rules of procedure of the JISC.

<sup>30</sup> See paragraph 11(a) of the annex to decision 9/CMP.1.

<sup>31</sup> See section VII of the annual report of the JISC to CMP 4, document FCCC/KP/CMP/2008/3 (Part II).

<sup>32</sup> See paragraphs 4 and 5, of the annex of decision 2/CP.22.

<sup>33</sup> See paragraph 81 of decision 2/CP.21.



45. Without prejudice to the review of the PCCB, the COP will be invited to elect six (6) members to the PCCB for a two-year term, as follows:

- One member from Africa;
- One member from Asia-Pacific;
- One member from Eastern Europe;
- One member from GRULAC;
- One member from WEOG; and
- One member from SIDS.

46. Chairs and Coordinators of groups and constituencies are invited to transmit nominations.

#### **M. The Technology Executive Committee (TEC)**

47. The TEC comprises 20 members, nominated by the relevant Chairs and Coordinators of groups and constituencies and elected by the COP. Each year, the COP elects 10 members to serve for a term of two years in their personal capacity. Members of the TEC may be eligible to serve a maximum of two consecutive terms, and remain in office until their successors are elected.<sup>34</sup>

48. The COP will be invited to elect ten (10) members to the TEC for a two-year term, as follows:

- Six members nominated by Non-Annex I Parties, as follows:
  - One member from Africa;
  - One member from Asia-Pacific;
  - Three members from GRULAC; and
  - One member from LDCs;
- Four members nominated by Annex I Parties.

49. Chairs and Coordinators of groups and constituencies are encouraged to nominate senior experts with a view to achieving, within the membership, an appropriate balance of technical, legal, policy, social development and financial expertise relevant to the development and transfer of technology for adaptation and mitigation, taking into account the need to achieve gender balance in accordance with decision 3/CP.23.<sup>35</sup>

#### **N. The supervisory body for the mechanism established by Article 6, paragraph 4, of the Paris Agreement**

50. Article 6, paragraph 4, of the Paris Agreement states that a body shall be designated by the CMA to supervise the mechanism established to contribute to the mitigation of greenhouse gas emissions and support sustainable development.

---

<sup>34</sup> See Appendix IV, paragraphs 4 and 5, of decision 1/CP.16.

<sup>35</sup> See Appendix IV, paragraph 3, to decision 1/CP.16.



Page 14

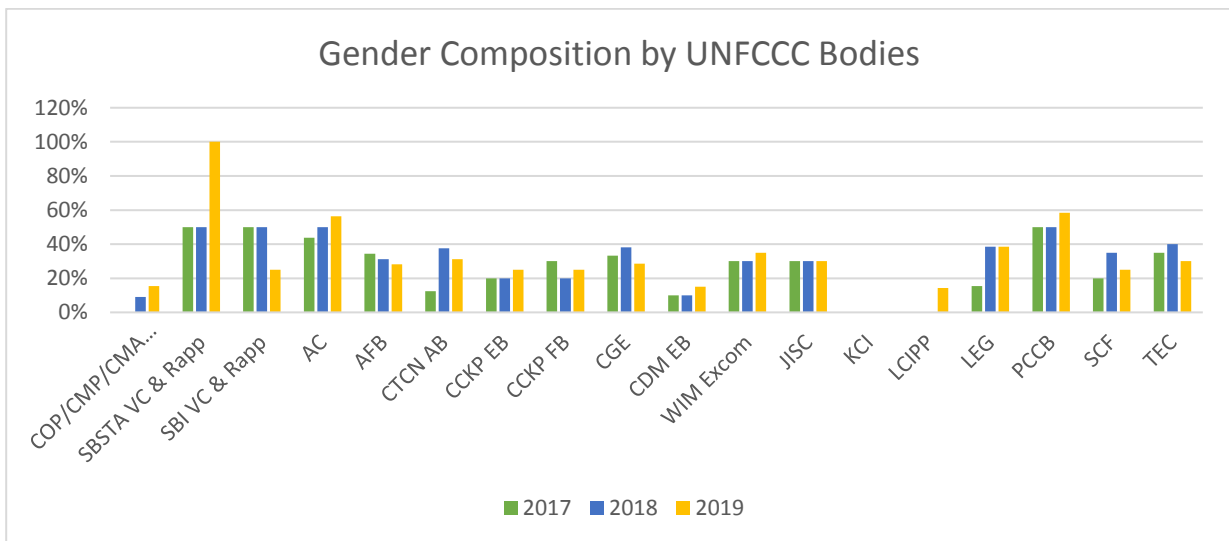
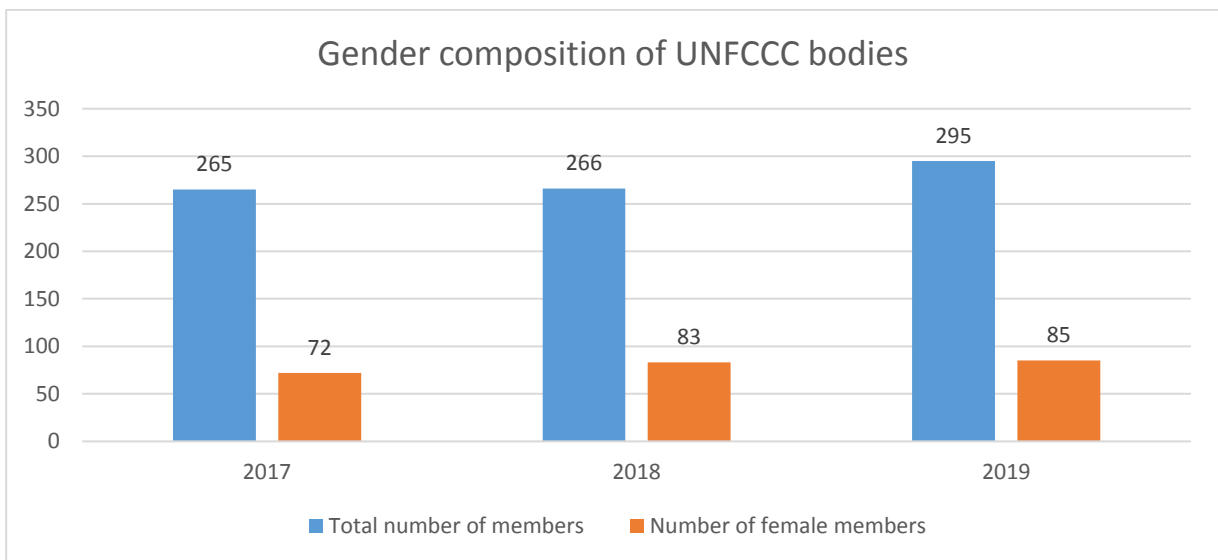
51. At CMA 2, should Parties reach agreement to designate the Supervisory body, Chairs and Coordinators of groups and constituencies, as appropriate, will be invited to transmit nominations to the Supervisory Body for election by the CMA at that session.



Annex II

**GENDER COMPOSITION OF BODIES ESTABLISHED UNDER THE CONVENTION, KYOTO PROTOCOL AND PARIS AGREEMENT**

Further to decision 3/CP.23, the table below contains information on the gender composition of bodies established under the Convention, Kyoto Protocol and Paris Agreement, including the comparison with data for 2017 to 2019 (as at 12 April 2019).





Body	Total number of members in 2017 <sup>a</sup>	Number of female members 2017	Percentage of women members in 2017 <sup>b</sup>	Total number of members in 2018 <sup>a</sup>	Number of female members 2018	Percentage of women members in 2018 <sup>b</sup>	Total number of members in 2019 <sup>a</sup>	Number of female members 2019	Percentage of women members in 2019 <sup>b</sup>	Change in the percentage of women compared with 2018
COP/CMP/CMA Bureau	11	0	0%	12 <sup>c</sup>	1	9%	13 <sup>c</sup>	2	15%	6%
SBSTA Bureau <sup>d</sup>	2	1	50%	2	1	50%	2	2	100%	50%
SBI Bureau <sup>d</sup>	2	1	50%	2	1	50%	4 <sup>c</sup>	1	25%	-25%
Adaptation Committee	16	7	44%	16	8	50%	16	9	56%	6%
Adaptation Fund Board	32	11	34%	32	10	31%	32	9	28%	-3%
Advisory Board of the Climate Technology Centre and Network	16	2	13%	16	6	38%	16	5	31%	-6%
Compliance Committee under the Kyoto Protocol - Enforcement Branch	20	4	20%	20	4	20%	20	5	25%	5%
Compliance Committee under the Kyoto Protocol - Facilitative Branch	20	6	30%	20	4	20%	20	5	25%	5%
Consultative Group of Experts	21	7	33%	21	8	38%	21	6	29%	-10%
Executive Board of the clean development mechanism	20	2	10%	20	2	10%	20	3	15%	5%
Executive Committee of the Warsaw International Mechanism for Loss and Damage associated with Climate Change Impacts	20	6	30%	20	6	30%	20	7	35%	5%
Joint Implementation Supervisory Committee	20	6	30%	20	6	30%	20	6	30%	0%





Body	Total number of members in 2017 <sup>a</sup>	Number of female members 2017	Percentage of women members in 2017 <sup>b</sup>	Total number of members in 2018 <sup>a</sup>	Number of female members 2018	Percentage of women members in 2018 <sup>b</sup>	Total number of members in 2019 <sup>a</sup>	Number of female members 2019	Percentage of women members in 2019 <sup>b</sup>	Change in the percentage of women compared with 2018
Katowice Committee of Experts on the Impacts of the Implementation of response measures	n/a	n/a	n/a	n/a	n/a	n/a	12	0	0%	0%
Local Communities and Indigenous Peoples Platform	n/a	n/a	n/a	n/a	n/a	n/a	14	2	14%	14%
Least Developed Countries Expert Group	13	2	15%	13	5	38%	13	5	38%	0%
Paris Committee on Capacity-building	12	6	50%	12	6	50%	12	7	58%	8%
Standing Committee on Finance	20	4	20%	20	7	35%	20	5	25%	-10%
Technology Executive Committee	20	7	35%	20	8	40%	20	6	30%	-10%
<b>Grand total</b>	<b>265</b>	<b>72</b>	<b>27%</b>	<b>266</b>	<b>83</b>	<b>31%</b>	<b>295</b>	<b>85</b>	<b>29%</b>	<b>-2%</b>

<sup>a</sup> The figures presented in this column reflect the total number of positions open for membership in each body, which may differ from the number of positions filled at the time of this notification.

<sup>b</sup> The percentage is calculated on the actual positions filled and not the total number of positions open for membership.

<sup>c</sup> Membership of these Bureaux includes additional members from amongst Parties to the Paris Agreement.

<sup>d</sup> The Chairs of SBSTA and SBI are members of the Bureau of the COP/CMP/CMA, and are therefore not counted in the bureaux of the SBSTA and SBI.

<sup>e</sup> The Consultative Group of Experts is composed of 24 members, including 21 government representatives. The data in the table relate to the government representatives only.