

The global IKI project

“Enhancing Climate Services for Infrastructure Investments (CSI)”

PCCB Network Workshop - Session 3: Lightning talks on capacity development solutions that enhance partner country climate services and data

giz Deutsche Gesellschaft
für Internationale
Zusammenarbeit (GIZ) GmbH

On behalf of:



Federal Ministry
for the Environment, Nature Conservation,
Nuclear Safety and Consumer Protection

of the Federal Republic of Germany

Infrastructure as backbone of modern society



(global) Value Chains



Communications

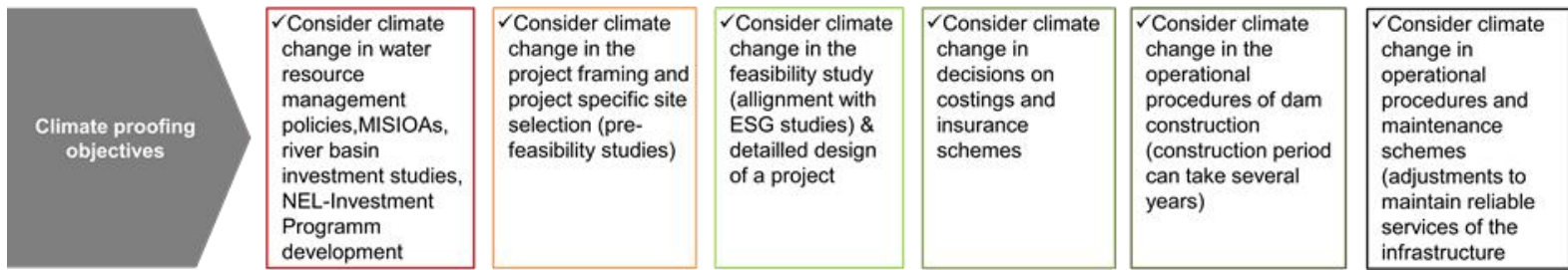


Emergency Services





CLIMATE PROOFING OF INFRASTRUCTURE INVESTMENTS



Climate Services for infrastructure decision-making

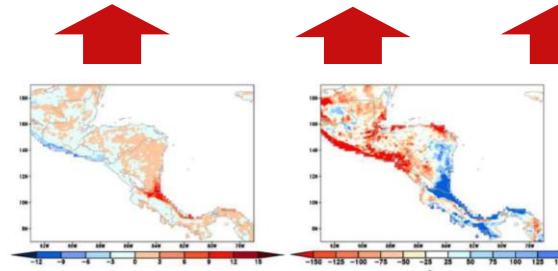


Figura 31. Tendencia de indicadores climáticos extremos -Derecha R50m (días) – izquierda R90p (mm). Fuente: Imbach, 2018

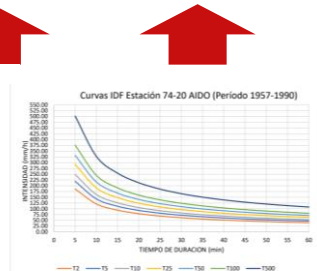


Figura 24. Curvas IDF, Estación 74-20 (AIDO) actualizadas a 1990. Fuente: Elaboración propia con datos de Imbach

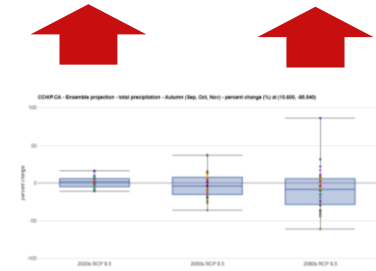
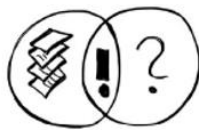


Figura 29. Proyección de precipitación según RCP 8.5 para ASO. Fuente: CCLIC/Imbach

CLIMATE SERVICES DWD

ASSIST IN
DECISION
MAKING

BRING
TOGETHER
ALL
STAKEHOLDERS



USER INTERFACE

CLIMATE INFORMATION & DATA PLATFORM

WE HAVE
LOTS OF
DATA...

SELECTION OF
THE RIGHT DATA

OBSERVATIONS, MONITORINGS

PROJECTIONS, CLIMATE IMPACT
MODELLING

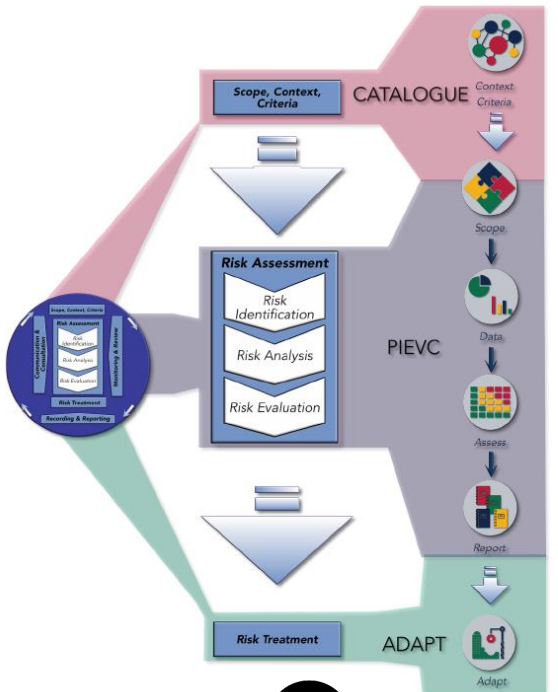
END USER

PROVIDER

INTERMEDIATES/
BROKER

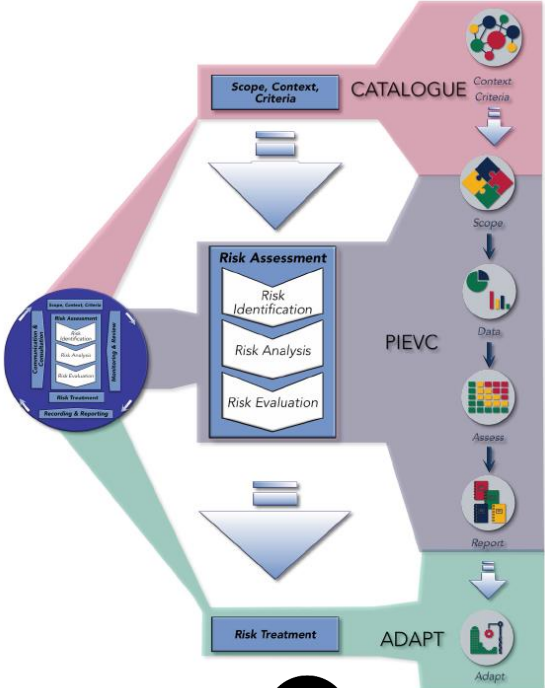


Strengthening what is there vs. „filling gaps“



Tools

Strengthening what is there vs. „filling gaps“



Tools



Pilot Case

Strengthening what is there vs. „filling gaps“



Meteorological Service

Ministry of Environment

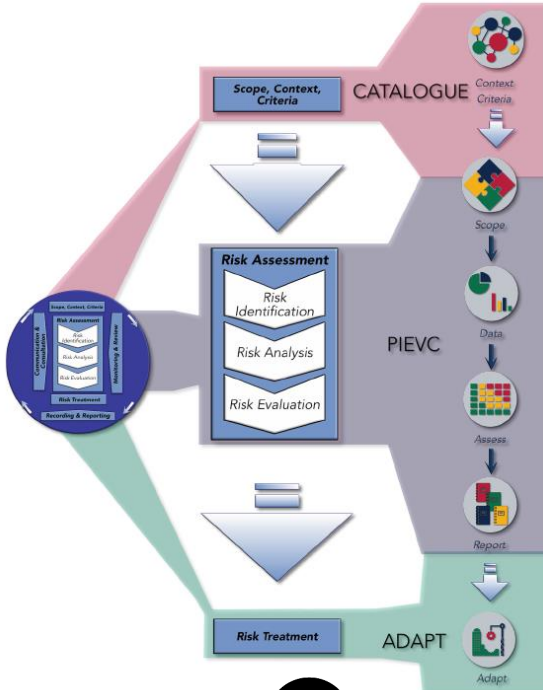
Universities & Researchers



Ministry of Public Works & Transport

Engineering Association

Emergency Agency



Tools



Pilot Case

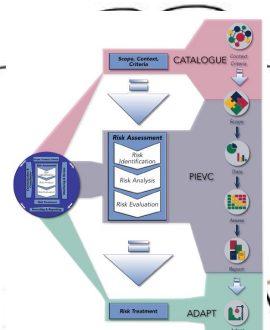


People

CLIMATE SERVICES DWD

ASSIST IN
DECISION
MAKING

BRING
TOGETHER
ALL
STAKEHOLDERS

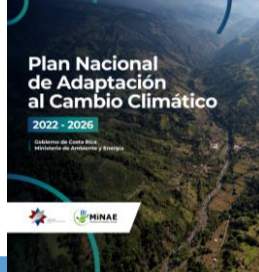


PROVIDER

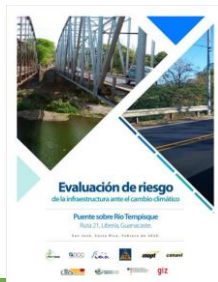
INTERMEDIATES/
BROKER

END USER

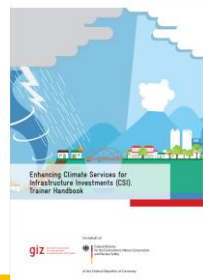




Regulatory Framework

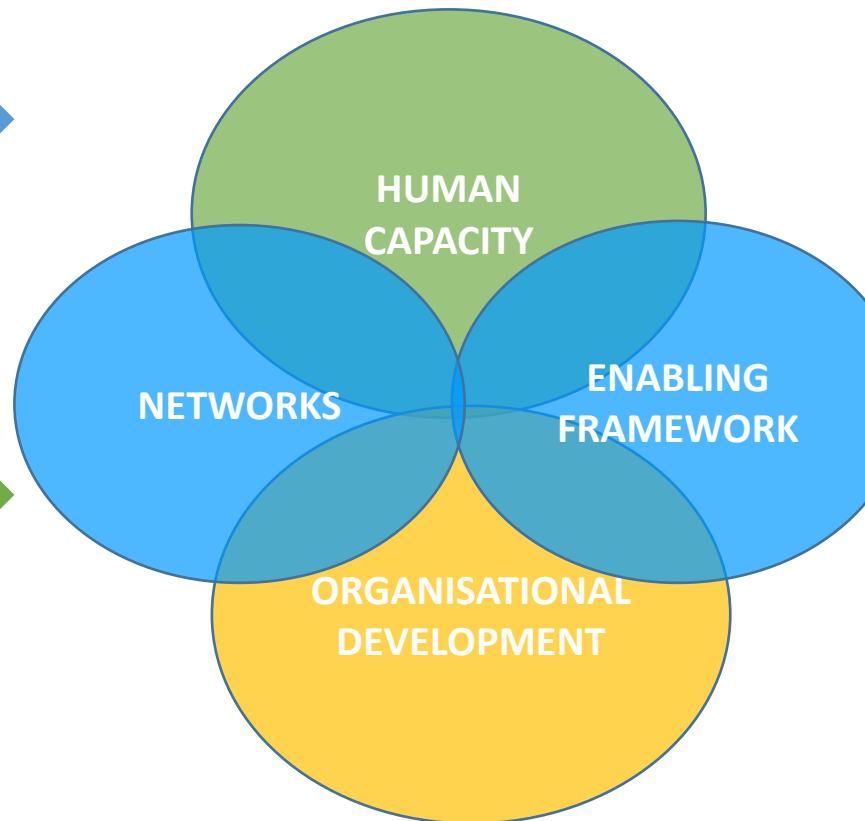


Tools & Processes



Human Capacities

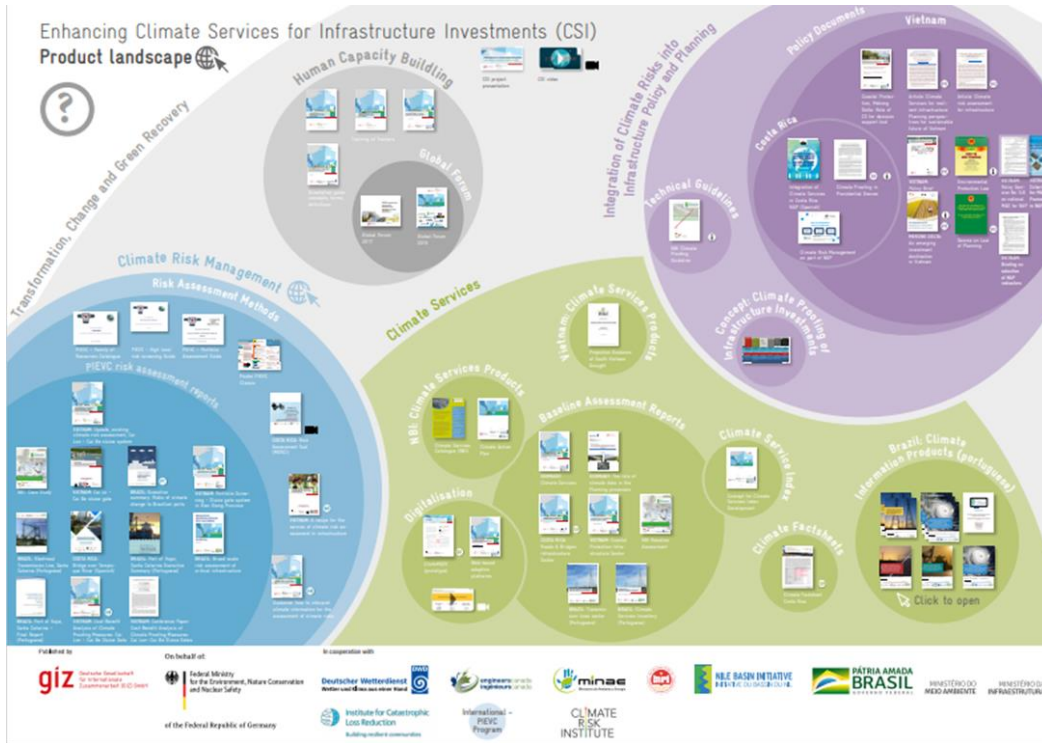
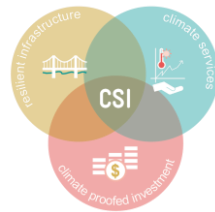
Case Study from Costa Rica



International Practitioners Network to allow for Peer-Learning



CSI Product Landscape



By navigating through the landscape, you will discover all products that have been developed in joint effort with our partners with the aim of increasing the resilience of infrastructure to the impact of climate change.

Access the product landscape here: [Enhancing Climate Service for Infrastructure Investments \(CSI\): Product landscape \(climate-resilient-infrastructure.com\)](https://climate-resilient-infrastructure.com)



Or through this QR code

Contact



Benjamin Hodick
Head of Project
benjamin.hodick@giz.de



Katharina Lotzen
Advisor
Katharina.lotzen@giz.de



Niklas Baumert
Advisor
niklas.baumert@giz.de



Katharina Schmidt
Junior Advisor
katharina.schmidt@giz.de



Katharina Zasada
Financial Management
katharina.zasada@giz.de



Eduarda Freitas
Advisor
eduarda.freitas@giz.de
Brazil



Pablo Borges
Advisor
pablo.borges@giz.de
Brazil



Federico Corrales
Advisor
federico.corrales@giz.de
Costa Rica



Juan Carlos Sanchez
Advisor
juan.sanchez@giz.de
NBI in Uganda



Ngoc Nguyen Thi Minh
Advisor
ngoc.nguyen1@giz.de Vietnam



www.giz.de



https://twitter.com/giz_gmbh



<https://www.facebook.com/gizprofile/>