

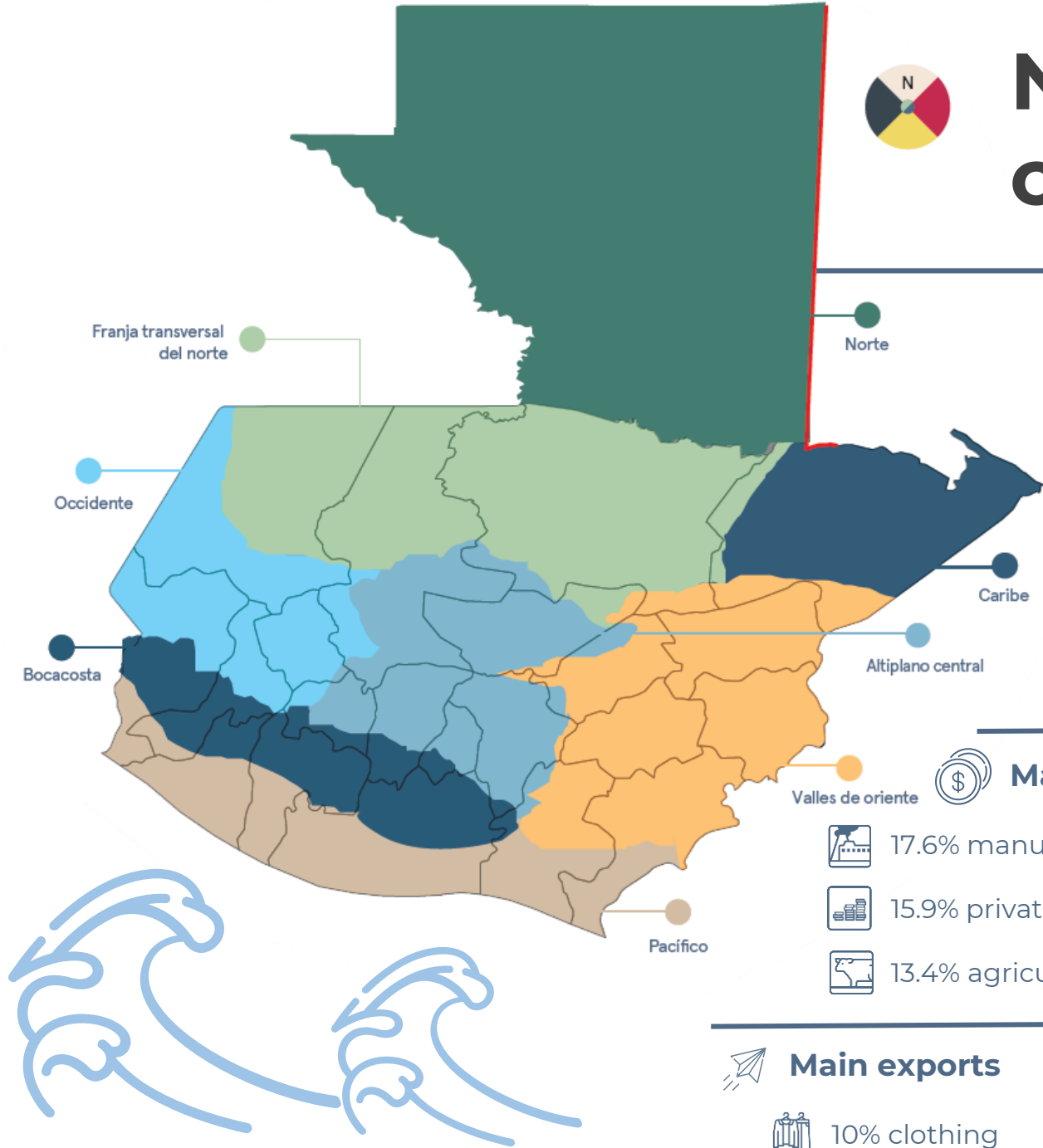


# 17th Facilitative Sharing of Views Workshop

1st BUR  
Guatemala



# National circumstances



## 8 Climate zones



## Territorial extension

108,889 km<sup>2</sup> land + 120,229 km<sup>2</sup> marine extension



## Population

16,346,950 (2021)

46.2% rural areas

53.8% urban areas



## Main economic activities



17.6% manufacturing industry



15.9% private services



13.4% agriculture, livestock, forestry and fishing.



## Main exports



10% clothing



15.9% coffee



13.4% cardamom and banana (ea.)



## Forest

3,574,244 ha

33% of land covered by forest

# National circumstances

## Institutional arrangements



**Climate Change Framework  
Law  
(Decreto 7-2013)**



**National Climate Change  
Action Plan (PANCC)**



**National Council of Climate  
Change (CNCC)**



**National Inventory System  
(SNIGT)**

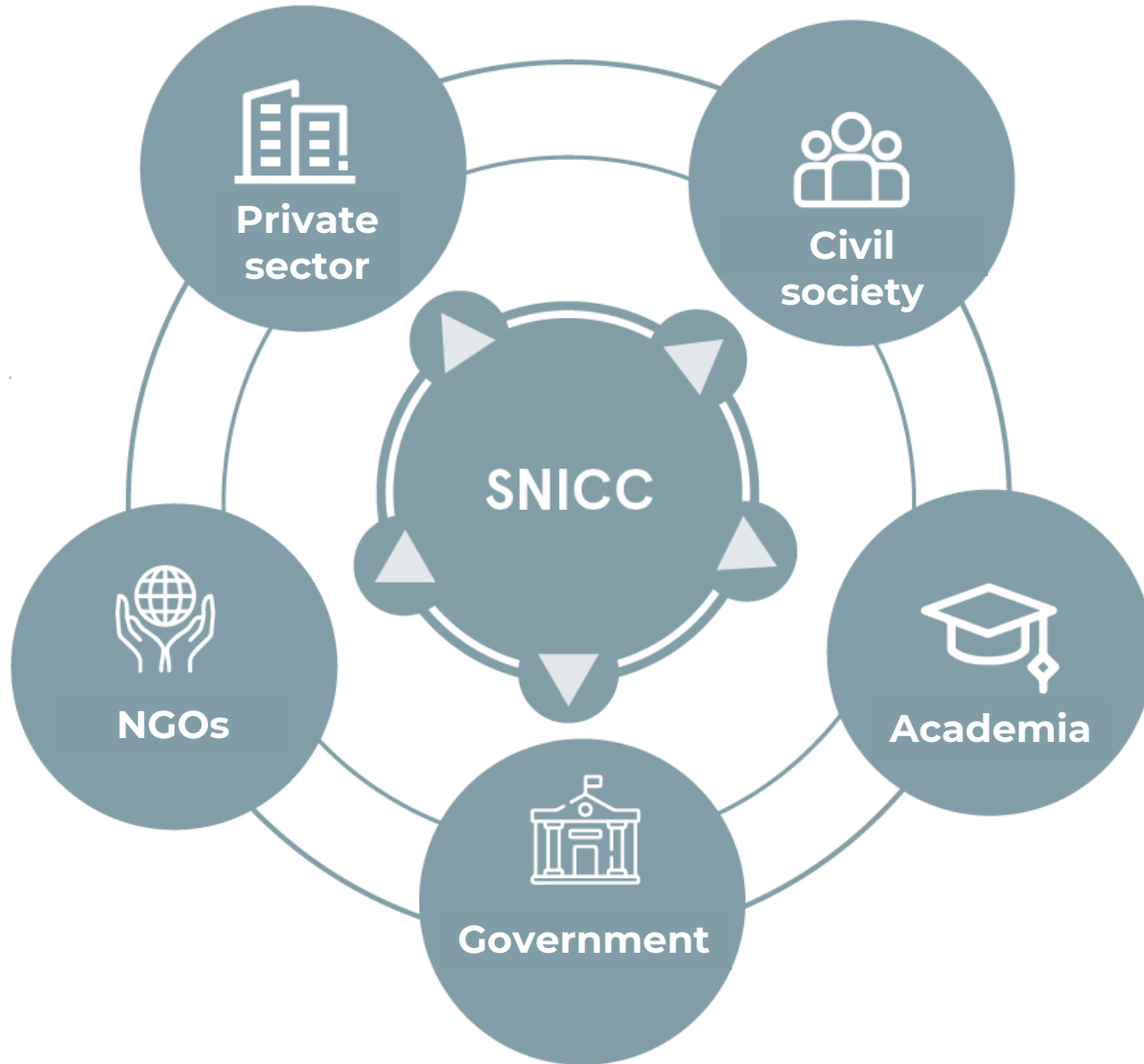


**National MRV system  
(SNICC)**

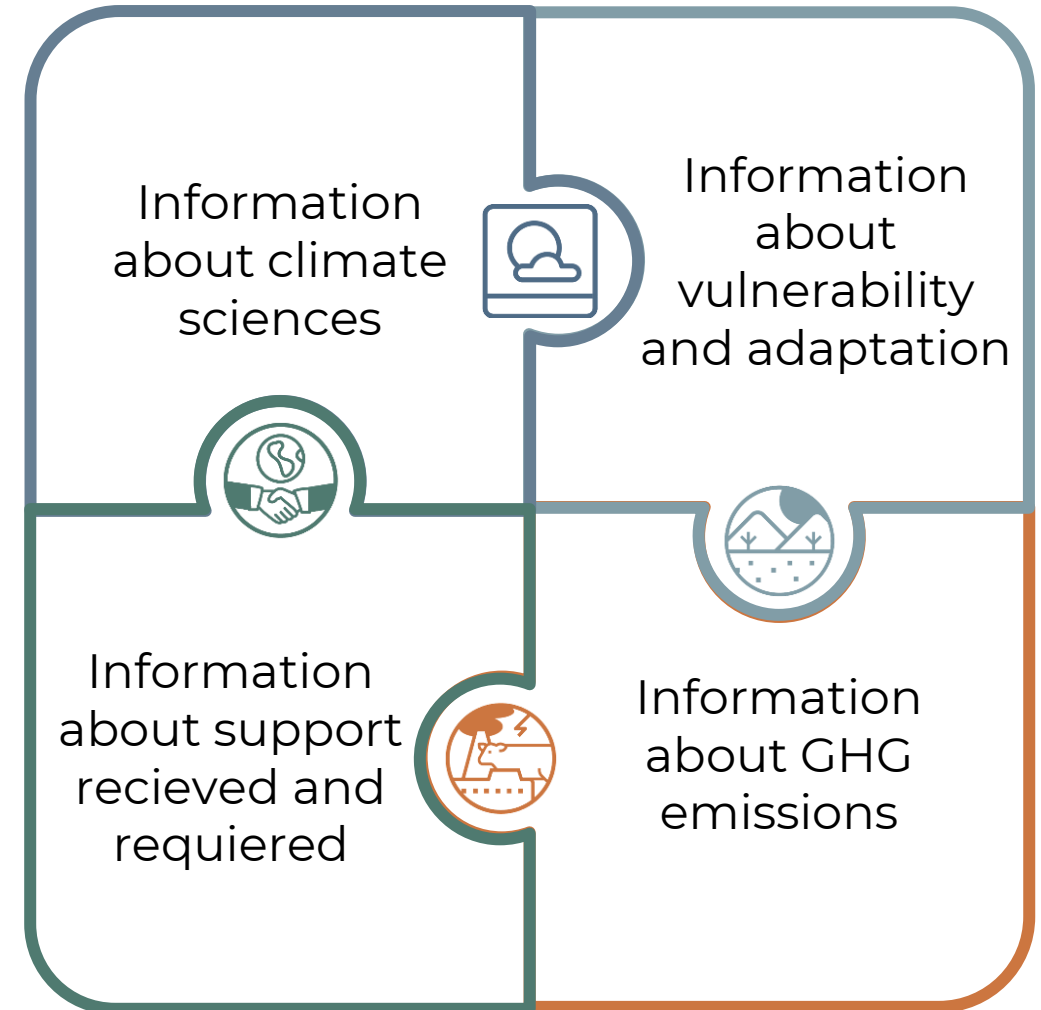


**Sectoral Work Tables**

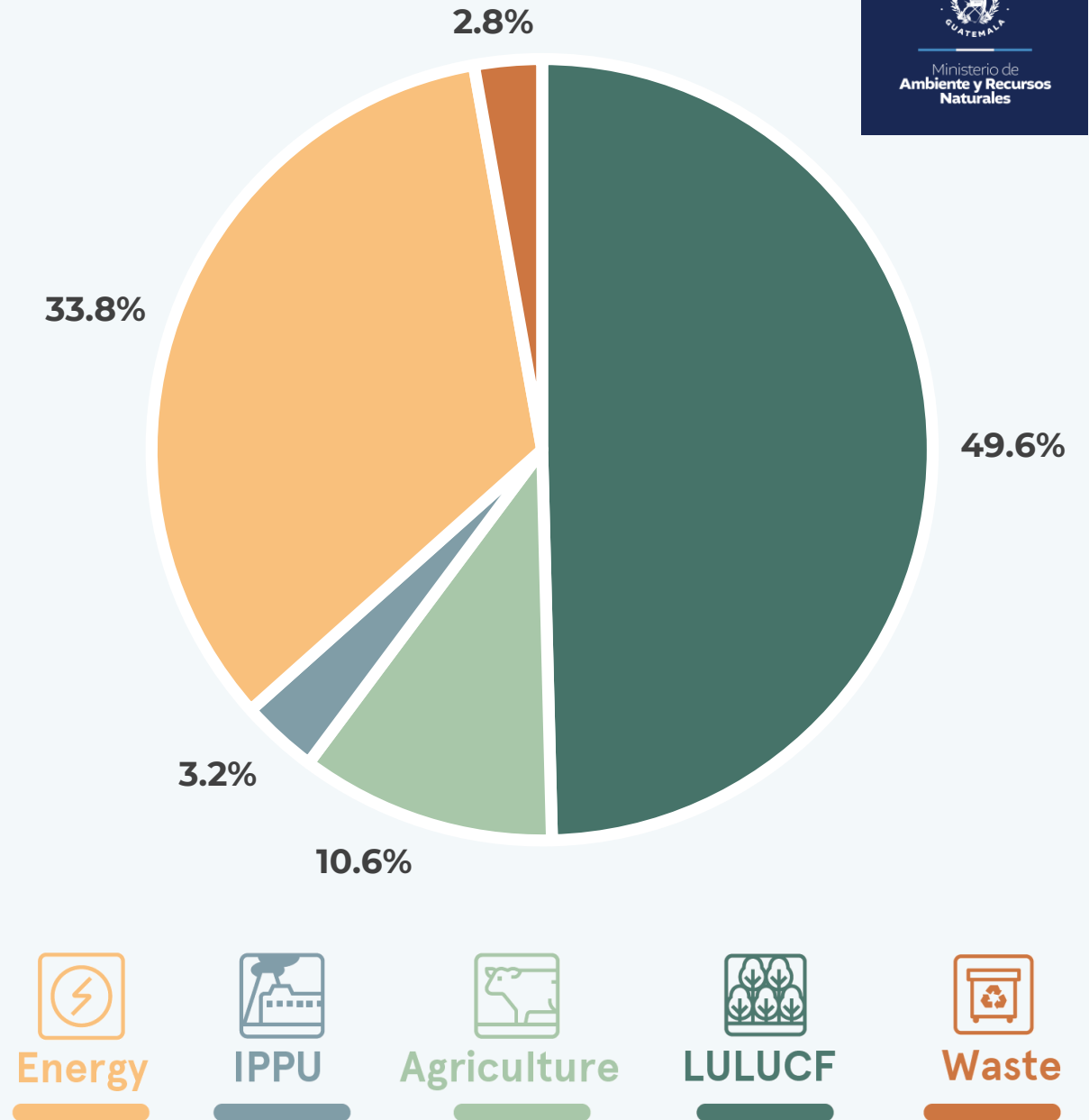
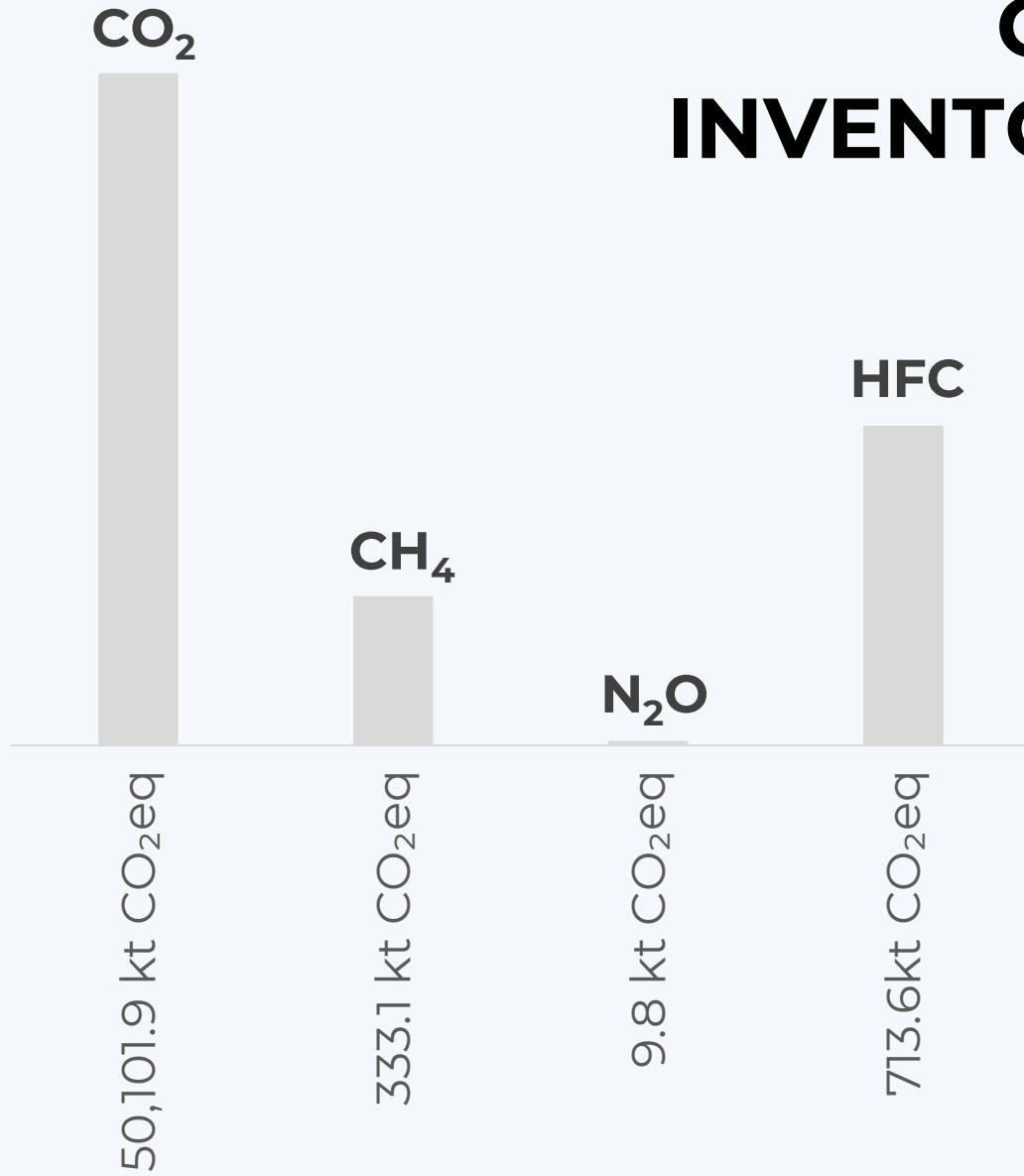
# National MRV System



## 4 sub-systems



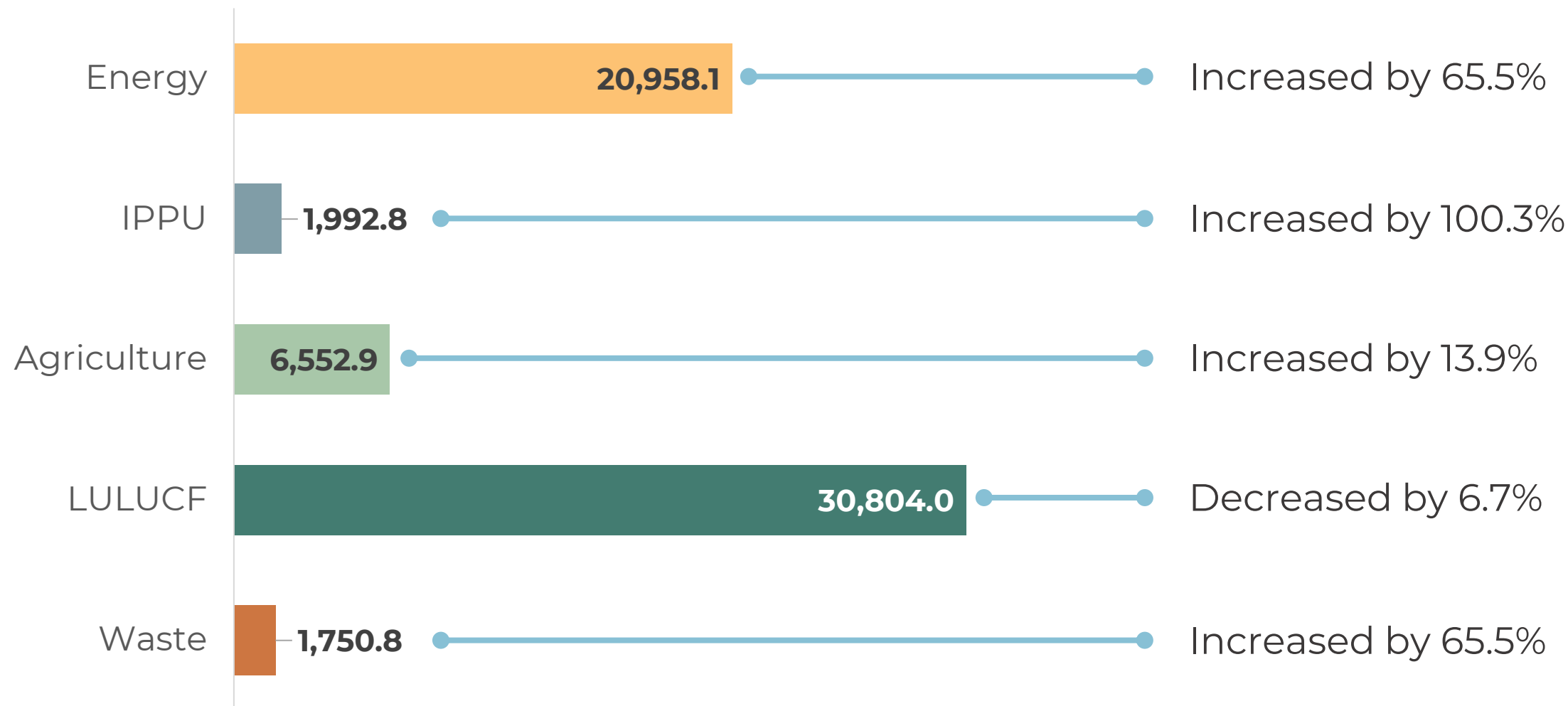
# 2018 GHG INVENTORY



# 2018 GHG INVENTORY

## Emissions in kt CO<sub>2</sub>eq by sector

## Comparison to 2005 emissions



# Mitigation actions



- Nationally Determined Contribution
- LEDS
- National Climate Change Action Plan



- National Energy Plan (2017-2032)
- Energy Efficiency Plan (2019-2032)



- National policy on cattle ranching
- National strategy for sustainable and low emisión cattle ranching

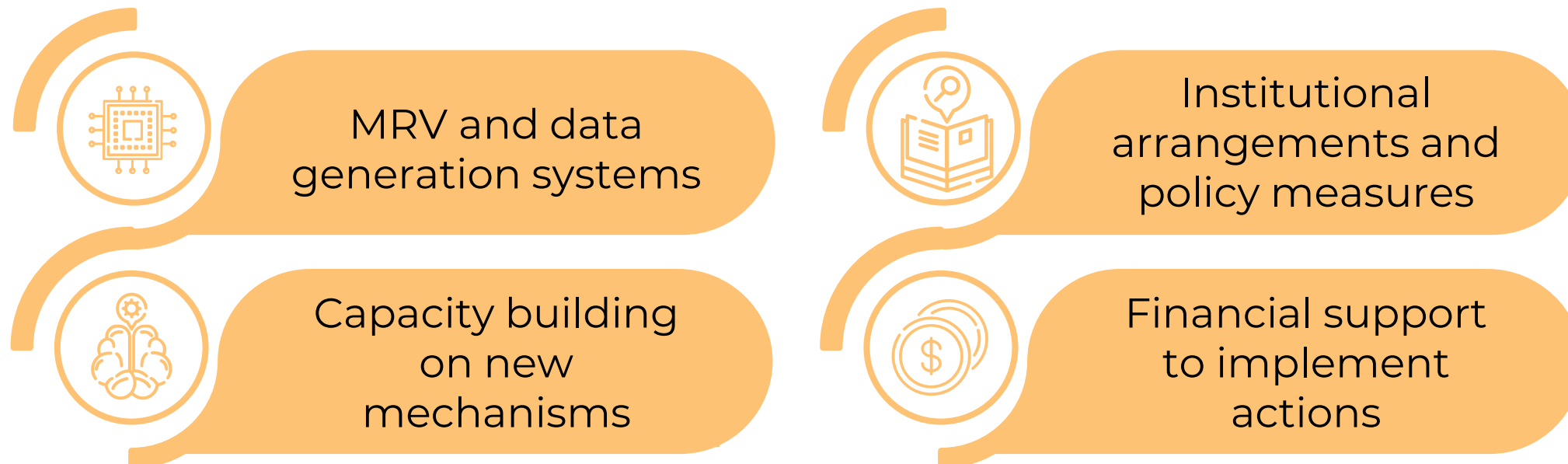


- REDD+ strategy

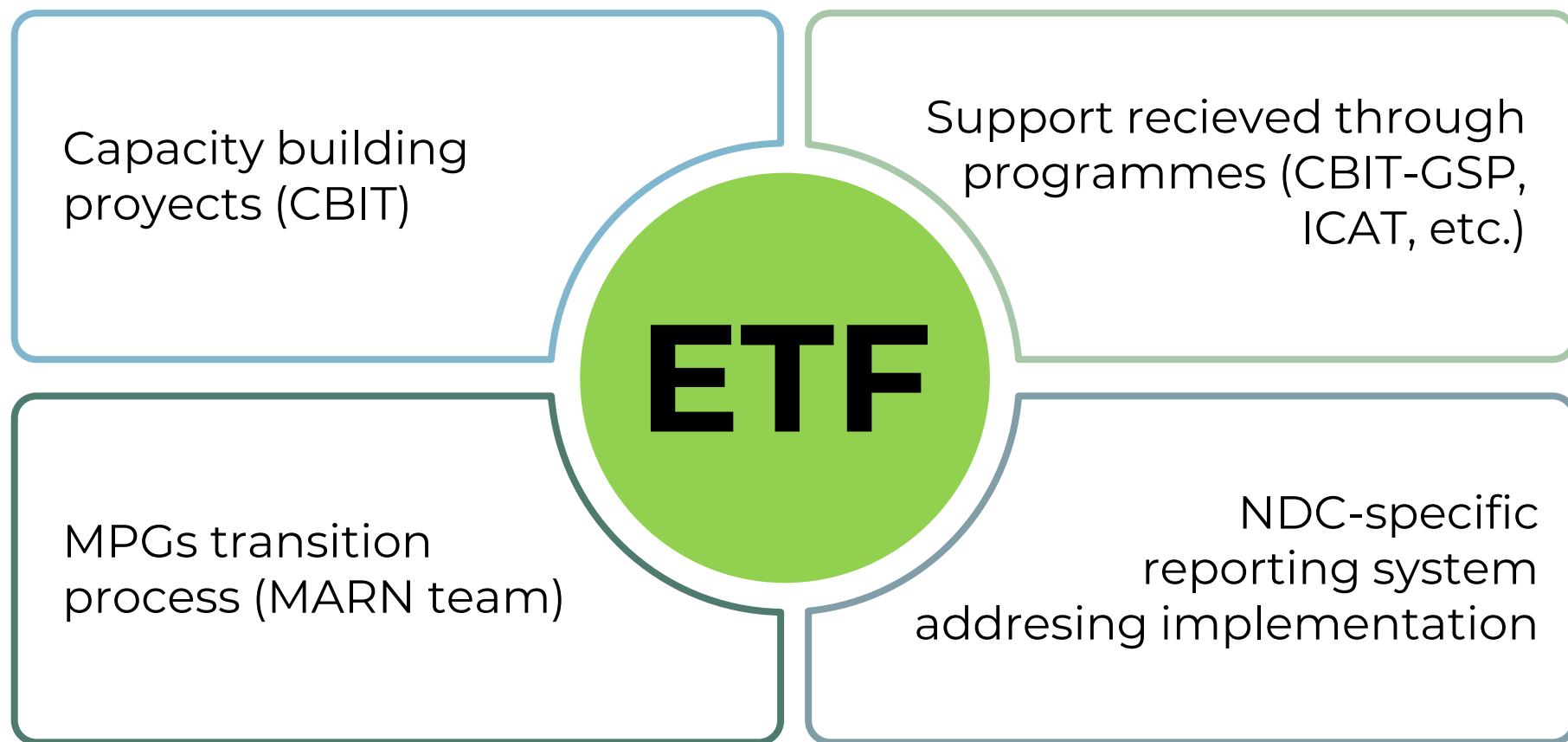
# Support received (2015-2020)



# Support needed



# ETF transition and implementation





**Thank you!**