

# Transformational Adaptation

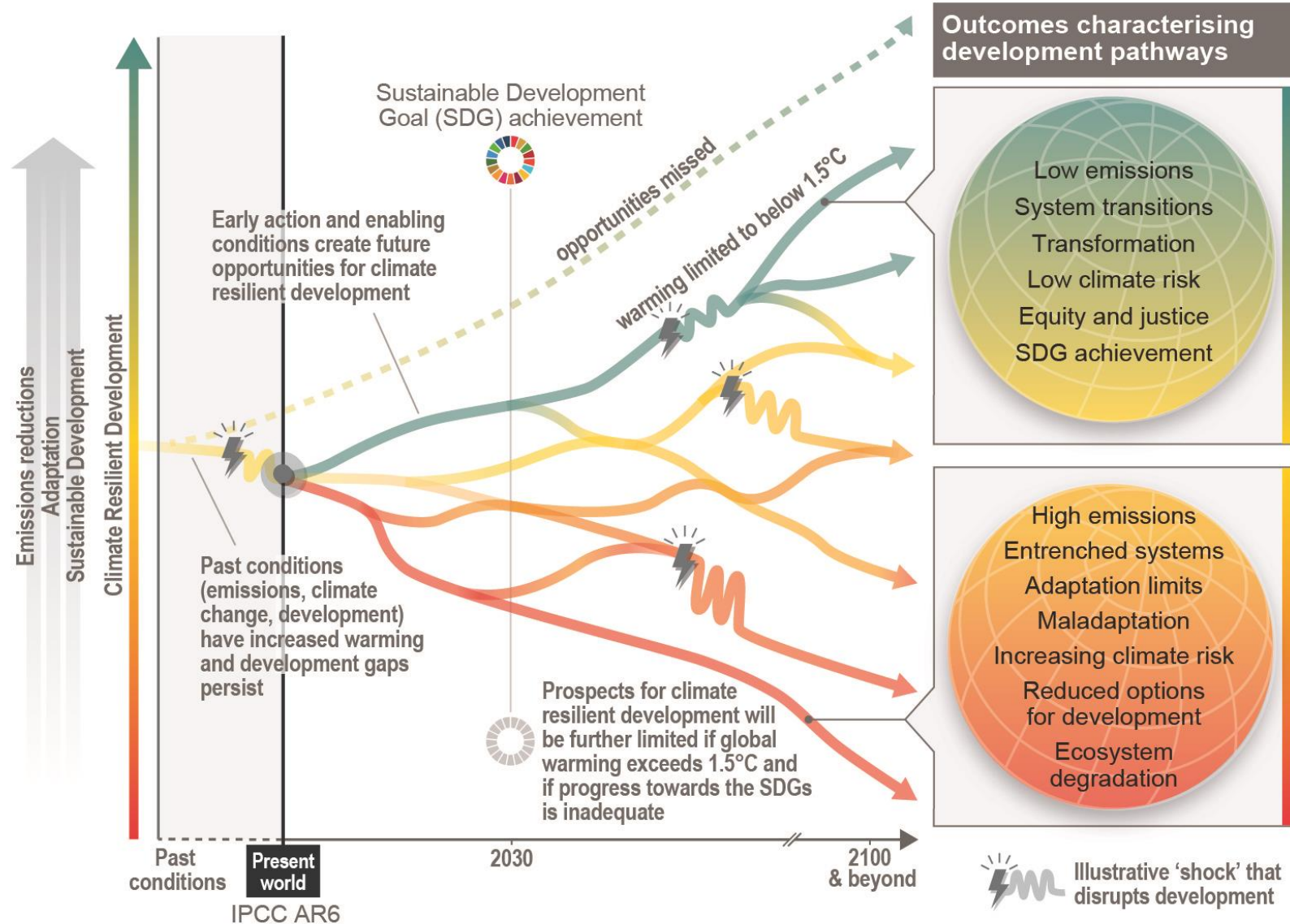
Including Operationalisation & Assessment

15th SBSTA Research Dialogue – SB58 – 8 June 2023

Lisa Schipper, Siri Eriksen, Debbie Ley, Henry Neufeldt, Christopher Trisos (IPCC AR6 WGII authors)

# There is a rapidly narrowing window of opportunity to enable climate resilient development

Multiple interacting choices and actions can shift development pathways towards sustainability



# Transformational Adaptation (IPCC, 2022)

Actions aiming at adapting to climate change resulting in **significant changes in structure or function that go beyond adjusting existing practices.**

Can be adopted at a *large scale*, can *lead to new strategies* in a region or resource system, *transform places* and *potentially shift locations*.

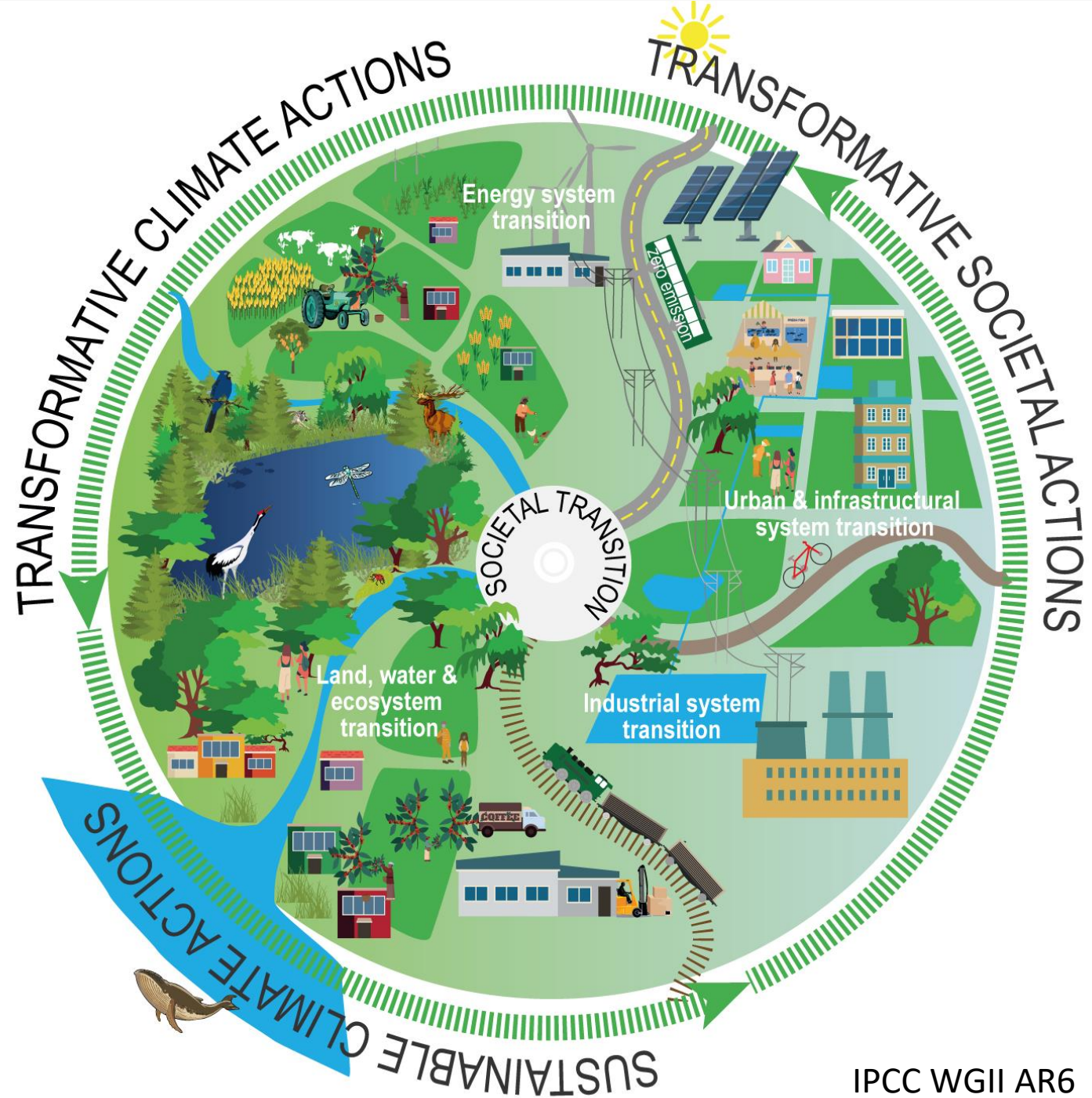
*Deep and long-term societal changes* that influence sustainable development (including values, worldviews).

# Key concepts

Incremental Adaptation

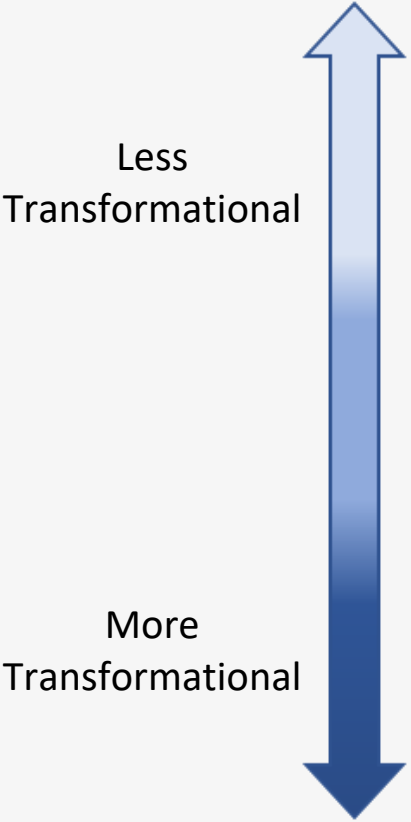
Transitions

IPCC AR6: 'Climate change is a threat to human well-being and planetary health. There is a rapidly closing window of opportunity to secure a liveable and sustainable future for all.'





# Transformational adaptation: Health example



| Adaptation  | Benefits to marginalized groups   | Dis-benefits or exclusion of marginalised groups  |
|---|---|---|
| Early-warning systems<br><i>(high confidence)</i>                   | Help with planning and preemptive identification of vulnerable groups   | People of higher socio-economic status tend to receive warnings, while marginalized groups may be excluded                          |
| Infrastructure for health<br><i>(high confidence)</i>               | Improvements to water infrastructure reduce displacement and improve health outcomes  | Development of sanitary water infrastructure in Germany offered less benefit in areas with higher income inequality                 |
| Climate-resilient health care systems<br><i>(medium confidence)</i> | Universal health coverage can be highly beneficial, especially to lower income people when needed for climate-related health outcomes | Facilities in poor communities are often poorly sited and can lack capacity to support people during climate-related extreme events |

# Elements of transformational adaptation



(Source: Taylor et al. 2022)

# Thank you

Lisa Schipper: [lschipper@uni-bonn.de](mailto:lschipper@uni-bonn.de)

Siri Eriksen: [siri.eriksen@nmbu.no](mailto:siri.eriksen@nmbu.no)

Debbie Ley: [debbieannley@yahoo.com](mailto:debbieannley@yahoo.com)

Henry Neufeldt: [henry.neufeldt@un.org](mailto:henry.neufeldt@un.org)

Christopher Trisos: [christopher.trisos@uct.ac.za](mailto:christopher.trisos@uct.ac.za)