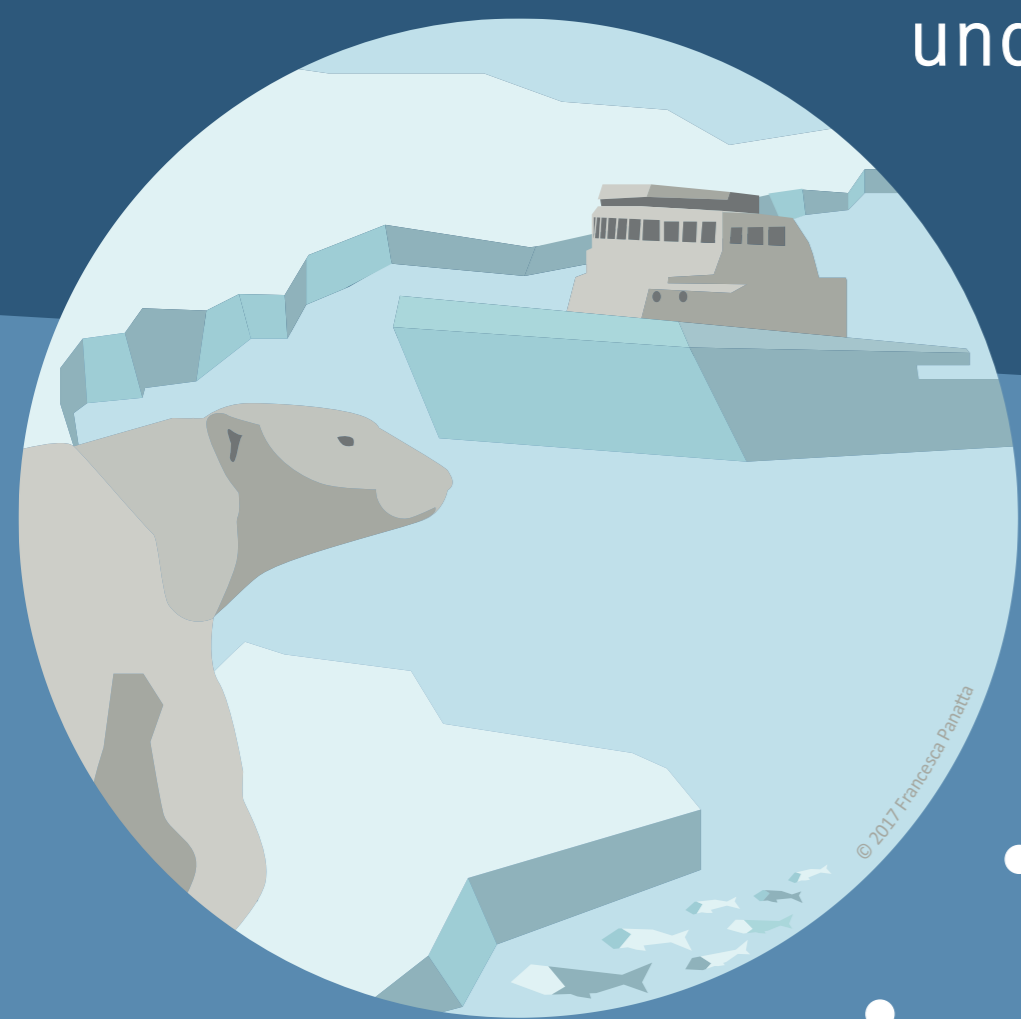


SPECIAL REPORT on the OCEAN AND CRYOSPHERE IN A CHANGING CLIMATE (SROCC)

Background

IPCC Special Reports are designed to address policy-relevant issues that require integrated input from more than one of the IPCC's three Working Groups (WG). They also provide an opportunity to address these issues in a more comprehensive way than is possible in the main assessment reports of the IPCC. The SROCC is developed under joint scientific leadership of WGI (The Physical Science Basis) and WGII (Impacts, Adaptation, and Vulnerability) and builds on scientific questions that emerged from seven government proposals.



Purpose

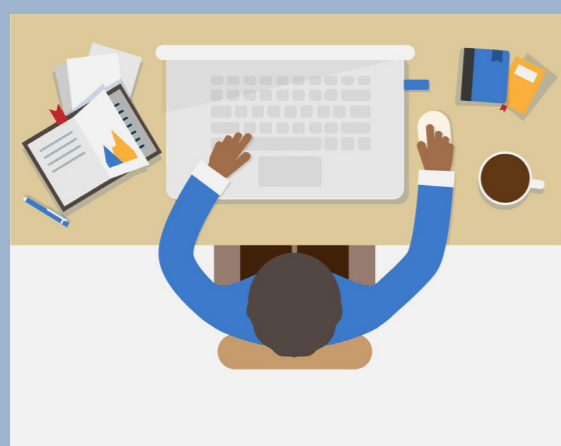
Provide a cross-cutting assessment including:

- The role of the ocean and cryosphere in the climate system – observed and projected changes
- Risks, vulnerability, and impacts on natural and human systems
- Responses to enhance resilience, adaptation options, limits and trade-offs

Present new and updated information for decision-makers to inform the design and implementation of appropriate policies and actions

Content

1. Framing and Context of the Report
2. High Mountain Areas
3. Polar Regions
4. Sea Level Rise and Implications for Low Lying Islands, Coasts and Communities
5. Changing Ocean, Marine Ecosystems, and Dependent Communities
6. Extremes, Abrupt Changes and Managing Risks
+ Cross-Chapter Box on Low Lying Islands and Coasts
+ Case studies



Get Involved !

- **Get your research** submitted by 15 October 2018 and accepted by 15 May 2019!
- **Register as Expert Reviewer** at www.ipcc.ch

Timeline



★ Registration opens for Expert Reviewers (April 2018 and October 2018)

Contact:

tsu@ipcc-wg2.awi.de

Working Group II Technical Support Unit
Intergovernmental Panel on Climate Change
c/o Alfred Wegener Institute

Further info:

<http://www.ipcc.ch/report/srocc/>

Instagram @IPCC
Twitter @IPCC_CH
Facebook @IPCC
LinkedIn @IPCC

ipcc
INTERGOVERNMENTAL PANEL ON
climate change

