



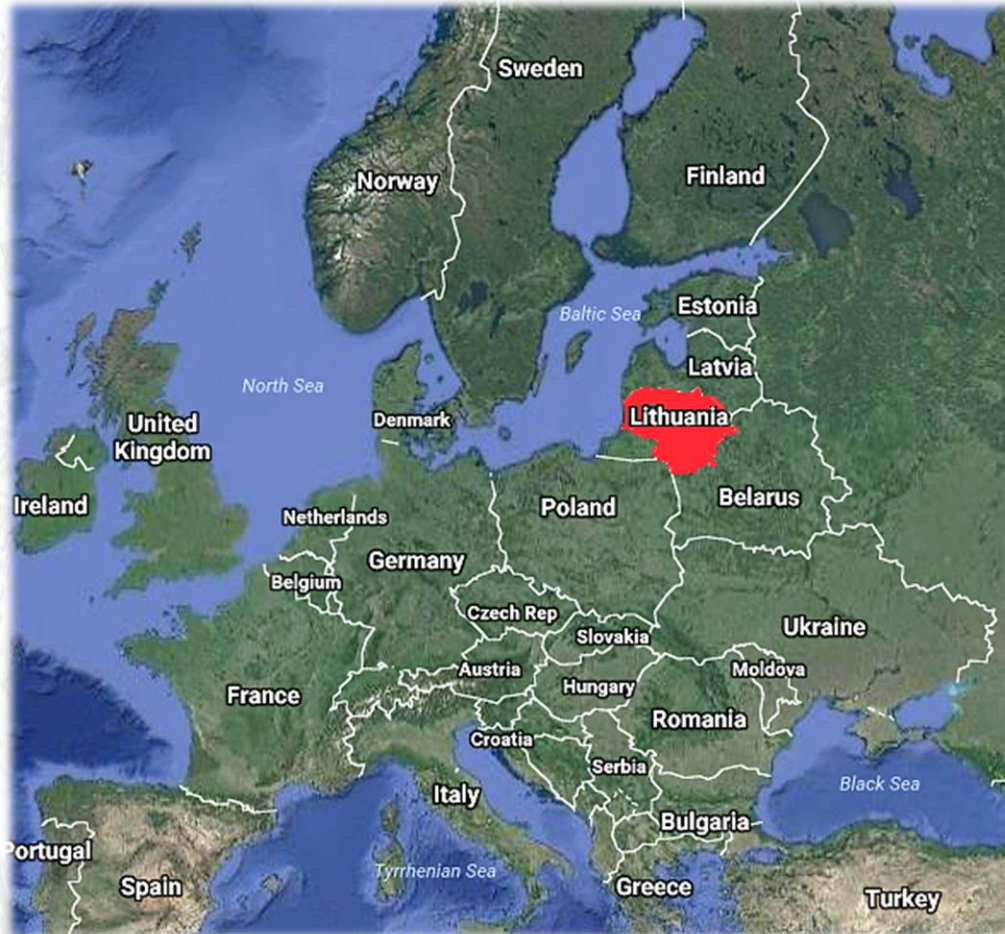
2nd Multilateral Assessment: Lithuania

Progress in achieving targets

SBI 45 – Marrakech – 14 November 2016



Lithuania's national circumstances



Geography

- Baltic State
- Area: 65.3 thous. km²

Population (2015)

- 2.89 m inhabitants

GDP (2015)

- 12 845 Euro/capita
- +1,9% /year

GHG emissions (2014)

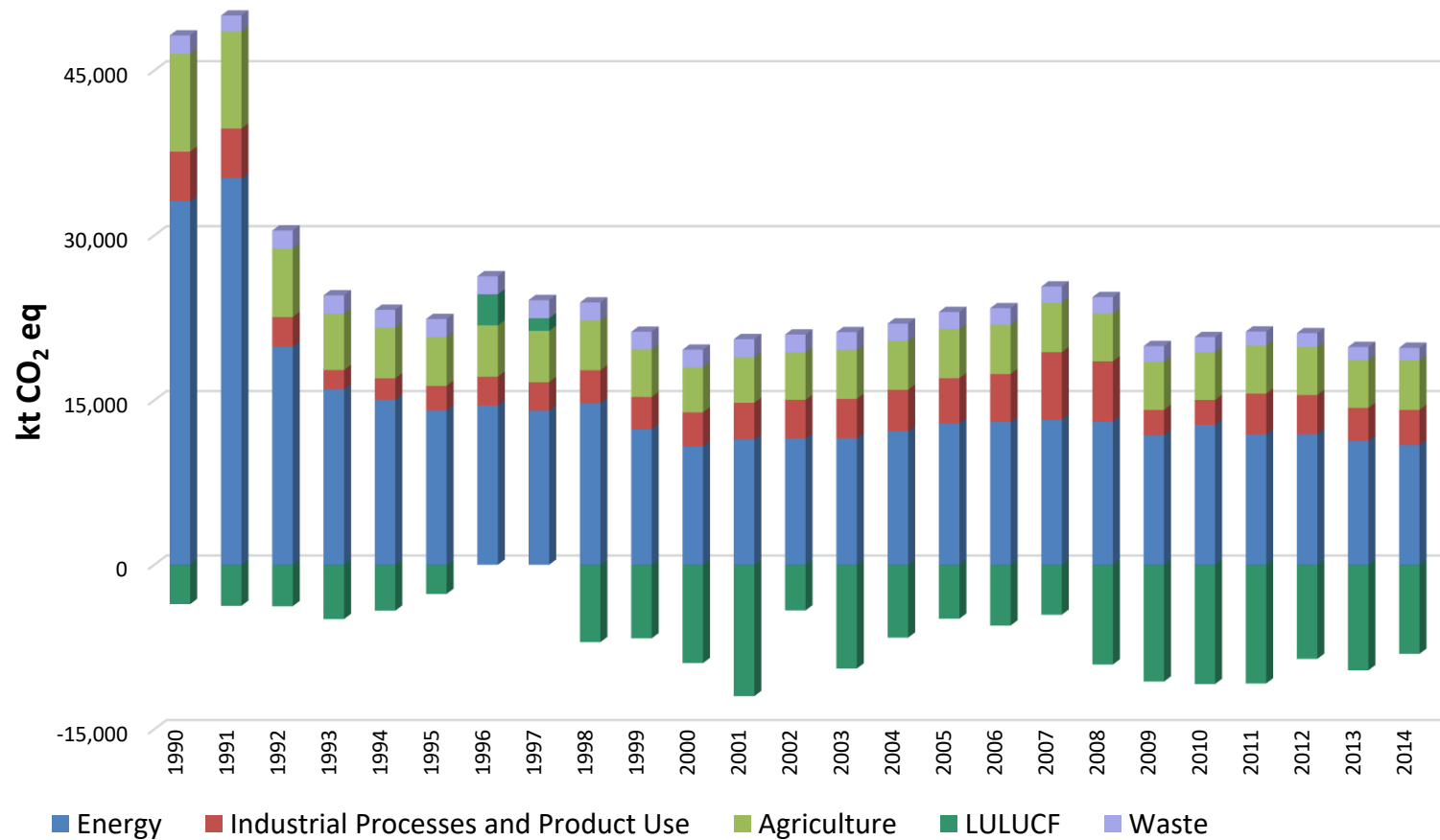
- 19.8 m t CO₂ eq
- 6.7 t CO₂ eq GHG/capita

0.46% from EU total GHG and

0.04% from global GHG emissions in 2014 (UNEP)

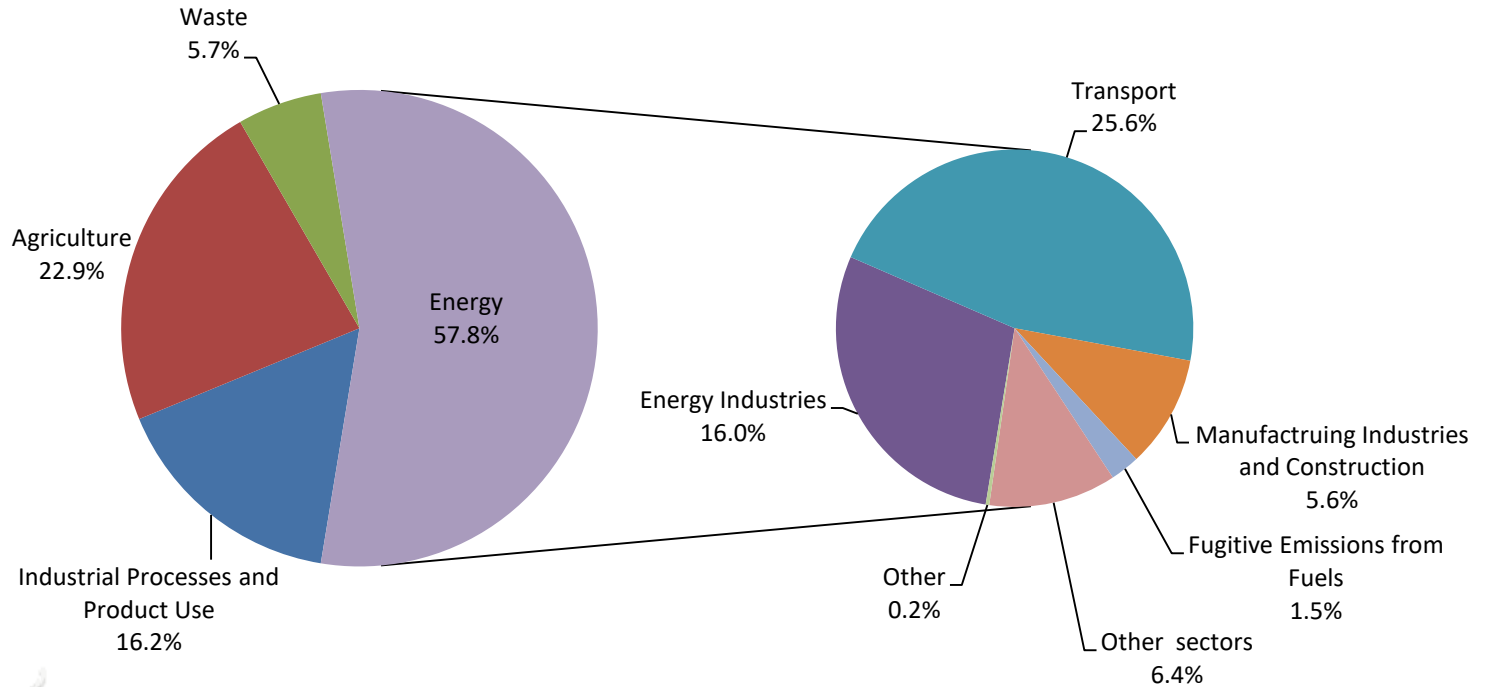


GHG emissions 1990-2014



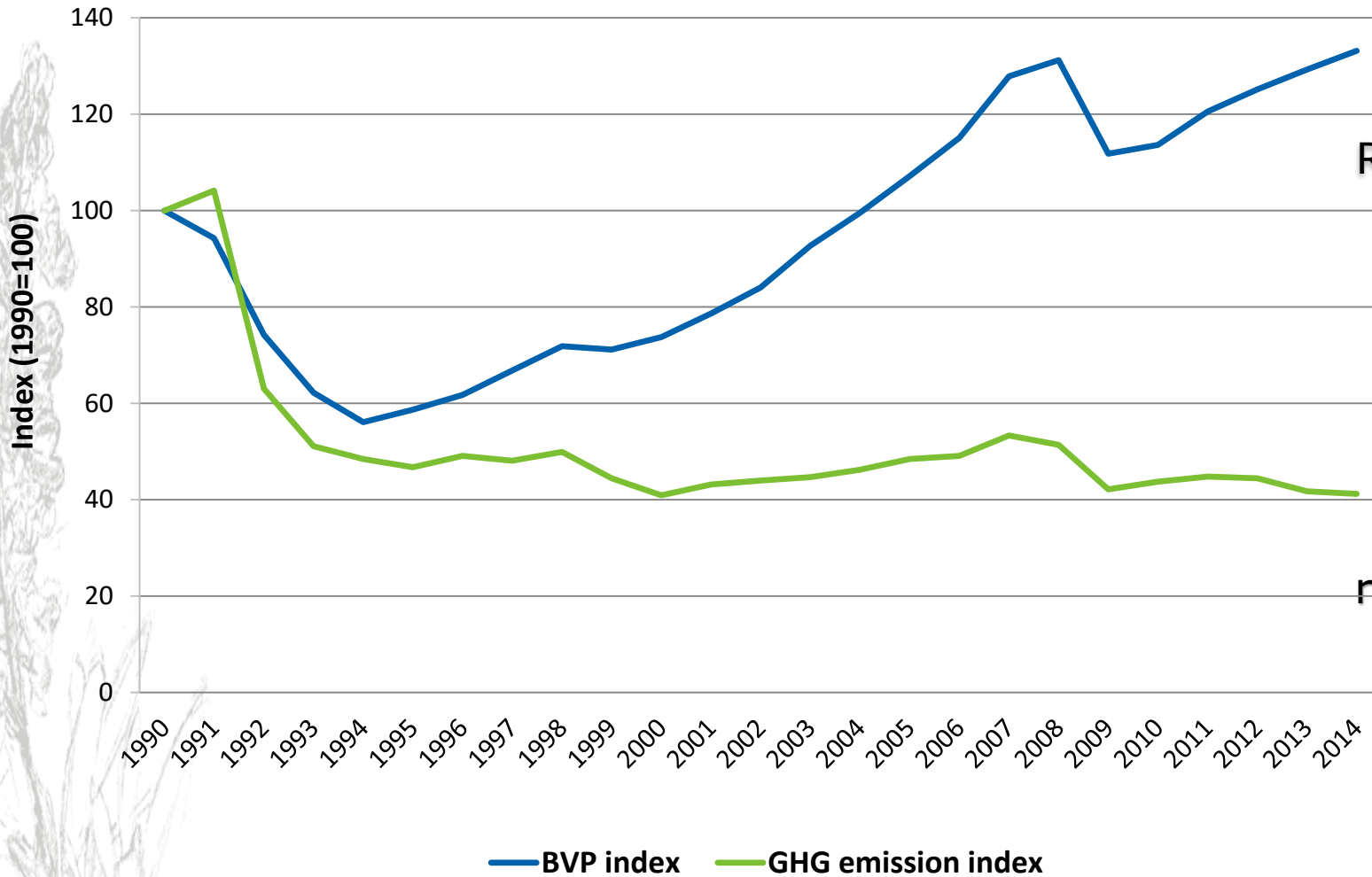


GHG emissions by sectors in 2014





Changes of GDP and GHG emission index in Lithuania



Real GDP growth
29%



GHG reduction
58%

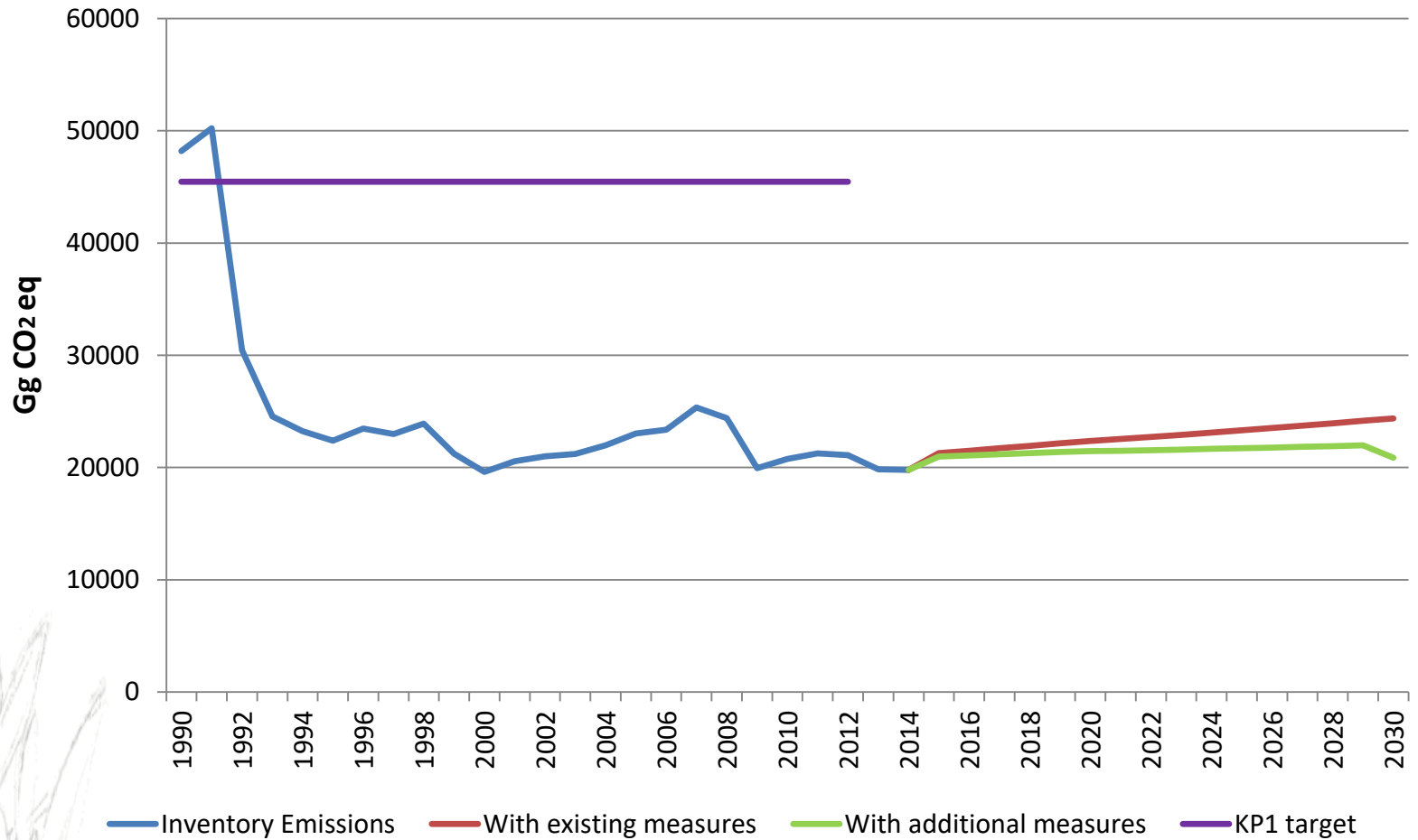


Lithuania's commitments under the EU law and the KP2 until 2020 and their implementation in 2014

	EU	Lithuania	Implementation
GHG emission reduction under KP CP2 (reference year 1990)	-20%	EU level target	-23% (EU)
EU ETS emission reduction (reference year 2005)	-21%	EU level target	-24% (EU)
Non-ETS emission reduction (reference year 2005)	-10%	+15%	-0.8% (LT)
Renewable energy in final consumption	20%	23%	23.6% (LT)
RES in transport	10%	10%	4.2% (LT)
Improvement of energy efficiency	20%	17%	5.37% (LT)

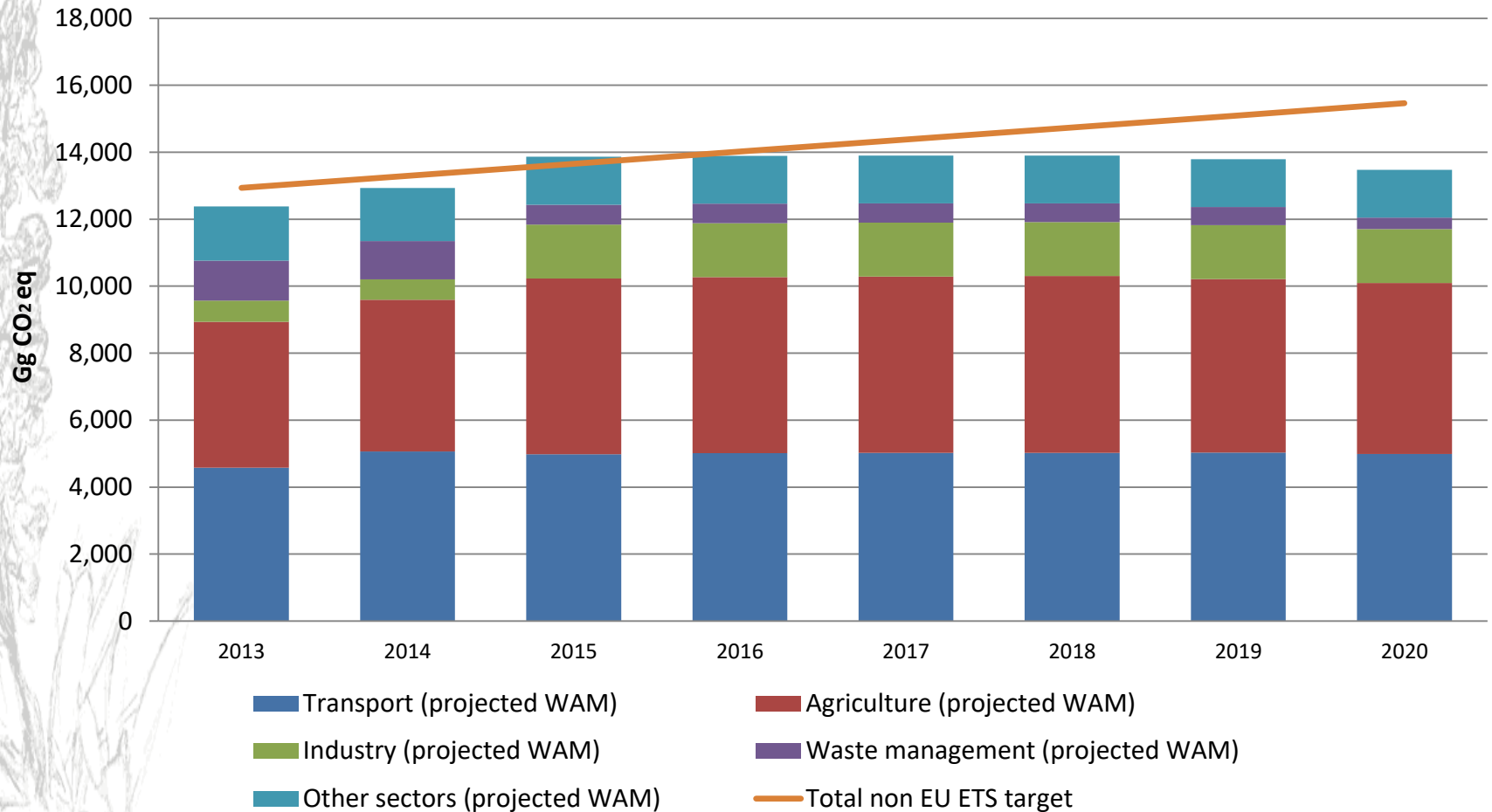


GHG emissions and projections





Non-EU ETS annual targets and projected GHG emissions with additional measures



2013, 2014 – GHG inventory data



Key policies and measures

Climate change key policies and measures

Strategy for the National Climate Change Management Policy by 2050 (2012)

Action Plan on the Implementation of the Goals and Objectives for 2013-2020 of the Strategy for the National Climate Change Management Policy (2013)

Cross-cutting policies and measures

National Reform Programme (2011)

National Sustainable Development Strategy (2003, 2011)

National Progress Programme (2012)

Sectorial policies and measures in energy, buildings, transport, industry, agriculture, forestry, waste management



Key sectorial measures

Sectors affected	National sectorial measures
Renewable energy	<ul style="list-style-type: none">• Cogeneration using biomass and waste• Wind, solar, geothermal energy• Biofuels in transport
Energy efficiency	<ul style="list-style-type: none">• Agreements with energy producers• Modernization of multi-apartment and public buildings• Standards for energy performance in buildings
Transport	<ul style="list-style-type: none">• Investments in public transport and cycling infrastructure• Electrification of railway• Electric vehicles• Road signs
Industry	<ul style="list-style-type: none">• Promotion of innovation• Research and development• F-gases regulation
Agriculture	<ul style="list-style-type: none">• Biogas production from agriculture waste• Reduction of nitrates and chemical fertilizers• Innovative technologies for treatment of manure• Sustainable agriculture farming



Economic instruments and financial support mechanisms

Performance and Energy Efficiency Standards

Environmental Tax -> Environmental Investment Program

Emissions Trading -> Special Program for Climate Change

Tariffs Subsidies

Tax Incentives

EU structural and investment funds 2014-2020
(22.6% climate related projects)

Combination of economic instruments

Ministry of Environment of the Republic of Lithuania
<http://www.am.lt>



Source: <http://www.efoto.lt/node/1119460>