

Adaptation Fund



Financial Support for ACE Implementation

October 20, 2021

Cristina Dengel, KM Officer

ADAPTATION FUND

AF financial support at different levels

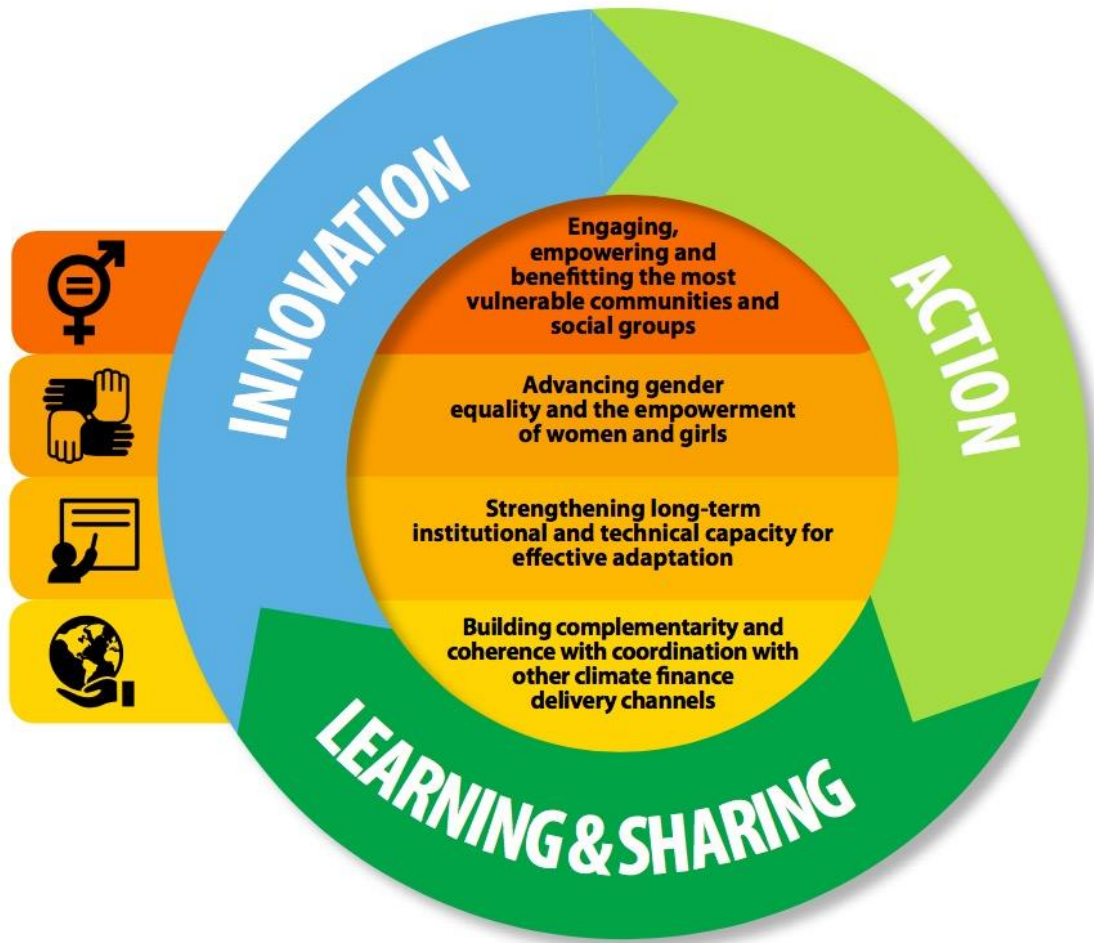
AF contributed to ACE Implementation at the Fund and project level:

Fund level:

- Medium-Term Strategy (MTS) 2018-2022 with its 3 pillars:
 - Action
 - Innovation
 - Learning & Sharing
- E-learning course on Direct Access

Project level:

- Mandatory KM components in all projects and programmes
- Learning grants
- Case studies on locally-led adaptation and gender



Medium-Term Strategy (2018-2022)

Fund level: Three pillars dedicated to

➤ Action

- ❑ Window for “enhanced direct access”: US\$20 M per year
- ❑ Scale-up microgrants: US\$200,000 per year.

➤ Innovation

- ❑ Large grants (<US\$5 M) for rolling out, scaling up innovation;
- ❑ NIE Micro-grants (<US\$250 k) for encouraging new innovation, creating evidence base.
- ❑ Small grants (<US\$250 k) available through UNDP & UNEP-CTCN to non-accredited entities;

➤ Learning & Sharing

- ❑ Support learning and sharing about adaptation finance and action through
 - lessons learned from Fund processes and projects/programs captured and effectively communicated to adaptation actors around the world
 - Practical knowledge gained and guidance provided around themes/sectors
 - Analytical capacity strengthened in developing country Parties

Fund level: E-learning on Direct Access

“Adaptation Fund: Unlocking Adaptation Funding”

- 2 modules:
 - Accreditation
 - Addressing Environmental, Social (ESP) and Gender Policies (GP) in project design and implementation
- Target audience: NIEs seeking accreditation and/or re-accreditation, accredited NIEs who intend to submit proposals for AF funding
- Interactive, self-paced and inclusive of case studies and quizzes
- Free of cost and available in English, Spanish and French



Project level: KM in projects

- Knowledge management and learning embedded in AF funded projects/programs since the inception of its operations
- Mandatory learning and knowledge management component grouped in a single standing component or part of a larger component
- Separate from the knowledge activities financed under learning grants
- KM component/learning are specific to the objectives of the projects
- KM component tailored towards the outcomes of the project components

Project level: Learning grants

Features

- USD150,000/project
- Available to national implementing entities (NIEs) with an AF-funded project that has reached midway into implementation
- Activities financed need to be above and beyond the
- mandatory KM component of projects

Objectives:

- Transferring knowledge from one NIE to another
- Transferring knowledge from NIEs to wider adaptation community
- Developing knowledge and guidelines through partnerships

Eligible activities: knowledge platforms, lessons learned, partnerships with institutions, adaptation workshops, country exchanges etc.



Project level: Case studies

- Public participation and public access to information through
- consultations at project level

- Reflected in case studies :
 - “Local leadership in adaptation finance” including case studies from AF portfolio

 - “Integrating Gender in AF Projects & Programs” w/ case studies from AF portfolio

 - ESP case studies




Thank You



ADAPTATION FUND

Contact Person 

Cristina Dengel, Knowledge Management 

[@adaptation-fund.org](mailto:c.dengel@adaptation-fund.org) 

