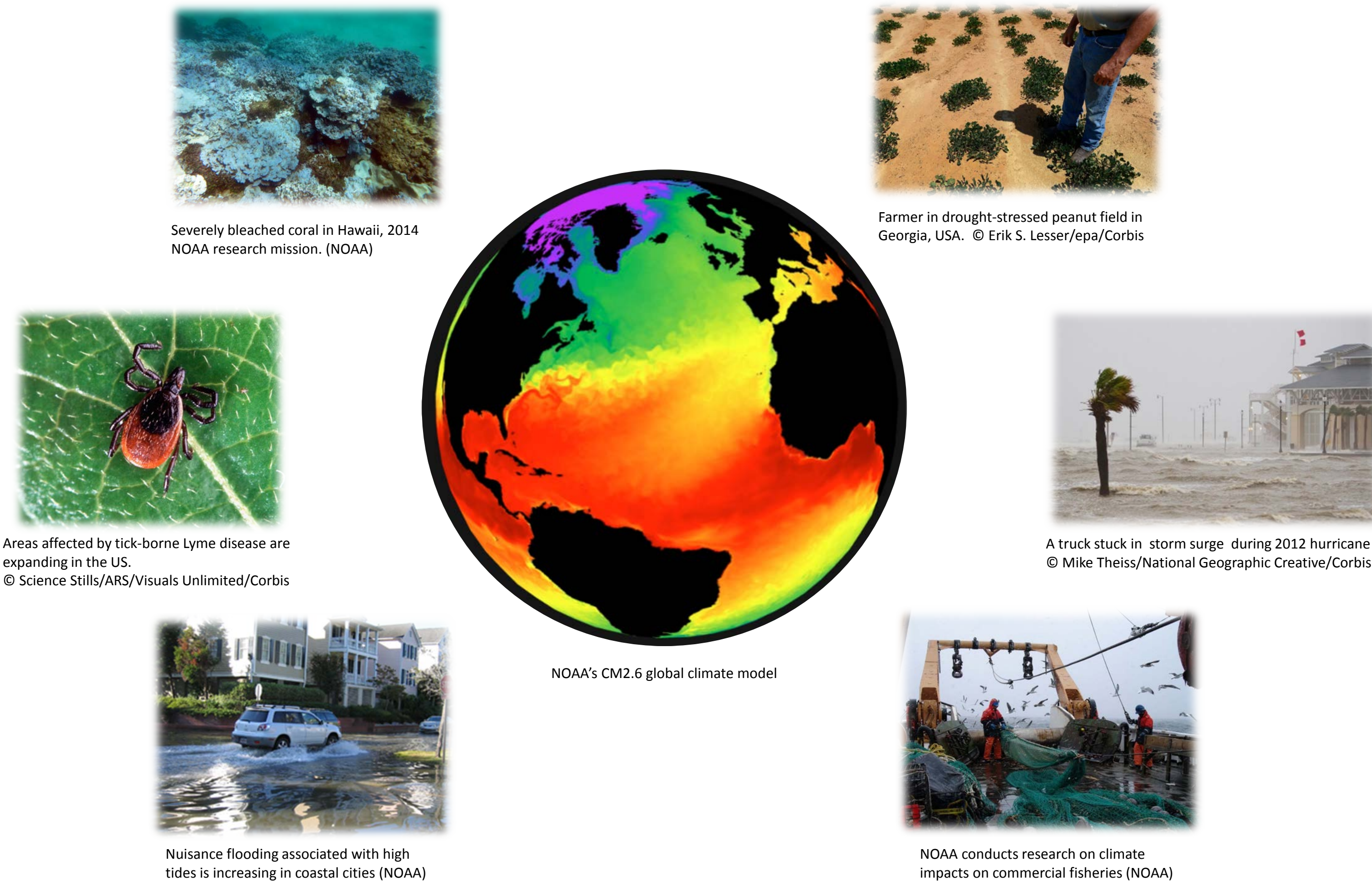


Translating climate research into useful products and services

Marian Westley, Ph.D.

Senior Advisor to the Chief Scientist of the United States National Oceanic and Atmospheric Administration

Understanding the challenge



Climate research often focuses on questions that are global and long term, but people, communities, and ecosystems are already experiencing climate impacts here and now. Early communication between scientists and decision makers and ongoing collaboration to coproduce tools and knowledge help bridge the gaps.

Helping communities prepare for sea level rise



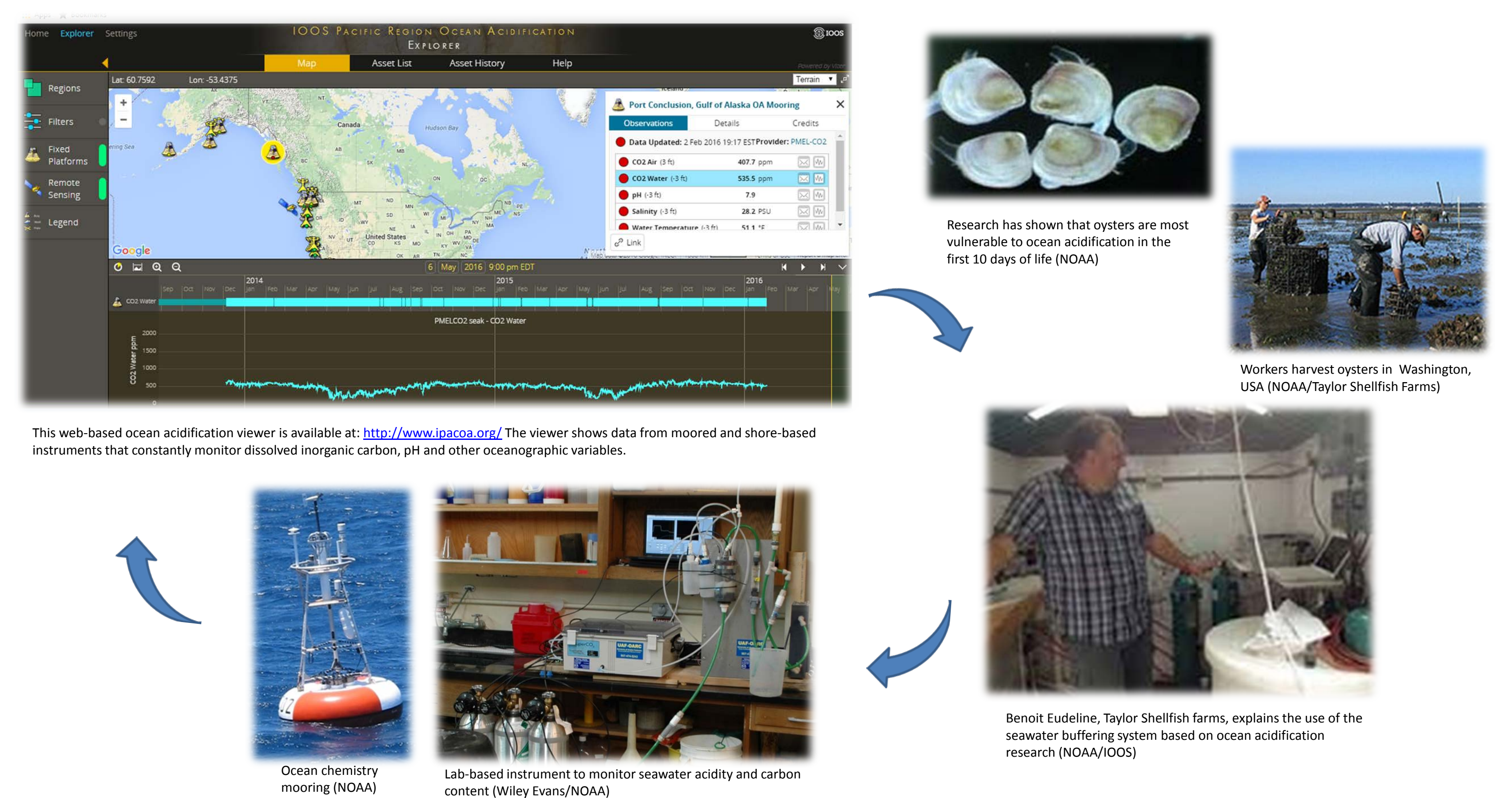
Decision makers need help understanding what impacts are possible. A sea level rise viewer can show impacts associated with a range of sea level projections. Engaging with communities that are adapting can guide further research and product development.

Engaging drought-vulnerable communities



Information needs to be timely and tailored. By monitoring conditions and working closely with drought-affected communities, we better understand critical water needs and provide information that supports preparedness and response.

Building resilience to ocean acidification



We are already adapting to natural climate variability and can use these approaches to adapt to climate change. An ocean acidification viewer shows both long-term trends and short-term variability so shellfish growers understand when shellfish are most vulnerable and can modify their environment

For more information, please contact marian.westley@noaa.gov

