

CATALYZING FURTHER ACTION

The **initial two-year workplan** of the Excom comprises nine Action Areas, one of which focuses on slow onset events, the expected results of which are outlined in the circular graphic below.

OPPORTUNITIES FOR COLLABORATION WITH THE EXCOM ON SLOW ONSET EVENTS

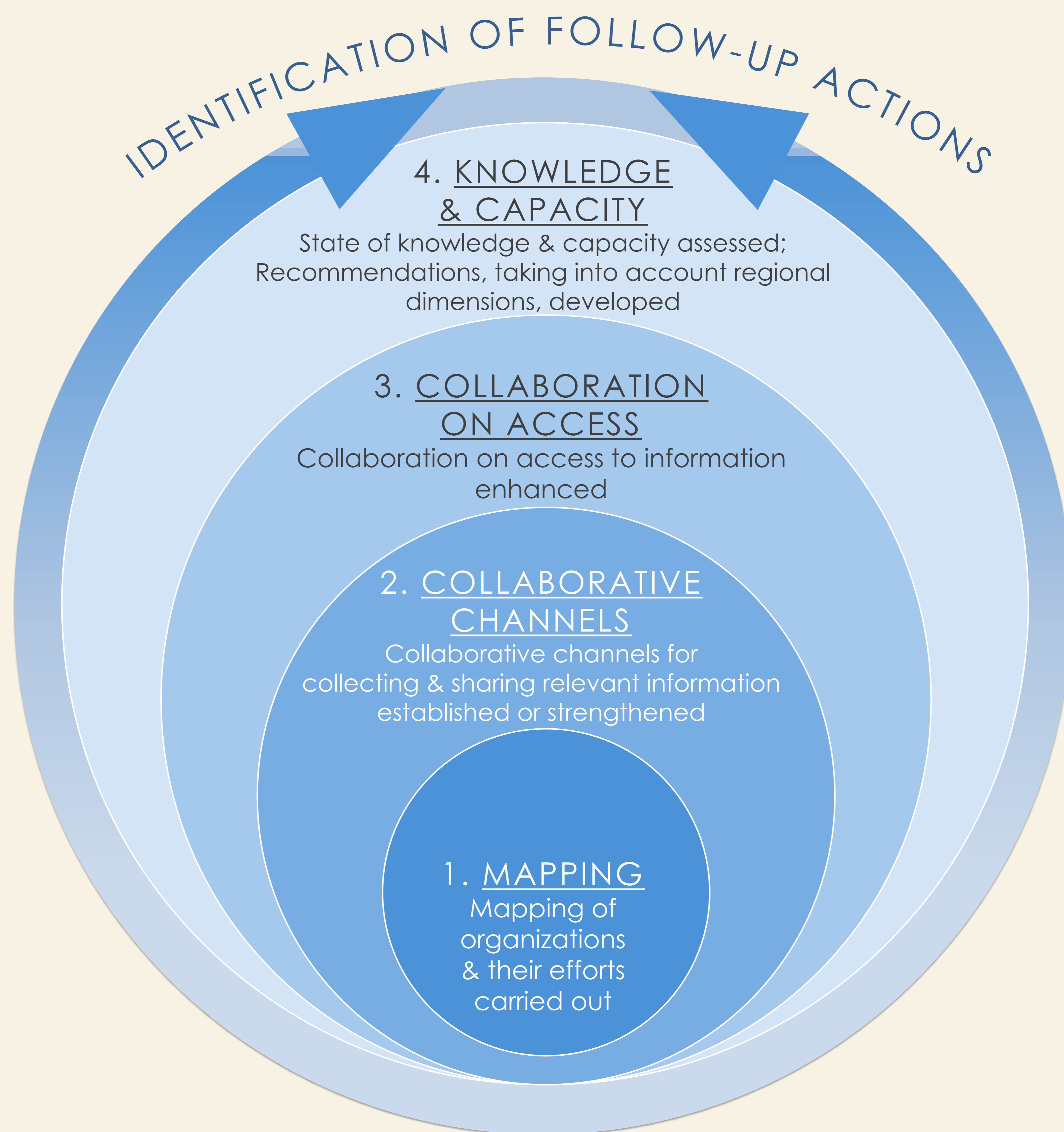
The Excom has developed a **database of organizations** working on slow onset events, which is updated on a rolling basis. The database is an ongoing initiative to **take stock of organizations that are working on slow onset events** and the scope of their current efforts.

Tell us about the work your organization is doing on slow onset events!

To submit information, please go to our website (unfccc.int/6056), or follow the link of the QR code on the right to tell us about the work your organization is doing on slow onset events. If your organization is interested in pursuing opportunities for working with the Excom please contact us via email: loss-damage@unfccc.int



bit.ly/1Nm1WcH



ACTION AREA 1	ACTION AREA 2	ACTION AREA 3	ACTION AREA 4	ACTION AREA 5	ACTION AREA 6	ACTION AREA 7	ACTION AREA 8	ACTION AREA 9
Particularly vulnerable developing countries, populations & ecosystems	Comprehensive risk management approaches	SLOW ONSET EVENTS	Non-economic losses	Resilience, recovery & rehabilitation	Migration, displacement & human mobility	Financial instruments & tools	Complement, draw upon the work of & involve existing bodies	Develop a five-year rolling workplan

PARIS MANDATE | Establish:

- a clearinghouse for risk transfer that serves as a repository for information on insurance and risk transfer, in order to facilitate the efforts of Parties to develop and implement comprehensive risk management strategies
- a task force to complement, draw upon the work of and involve, as appropriate, existing bodies and expert groups under the Convention including the Adaptation Committee and the Least Developed Countries Expert Group, as well as relevant organizations and expert bodies outside the Convention, to develop recommendations for integrated approaches to avert, minimize and address displacement related to the adverse impacts of climate change

