



UNFCCC Country Brief: Norway

A. Paris Agreement

Date NDC submitted	20-Jun-16
NDC type	Reduction vs. historical reference year
NDC adaptation component?	No
NDC mitigation highlight	At least 40% reduction of GHG emissions by 2030 compared to 1990
Ratification date	20-Jun-16

B. Key country indicators

	Global Rank	Global share	Value
CO2 emissions from fuel combustion ¹ (2014)	65	0.11%	35.31 Mt CO2 Eq.
Population ² (2016)	117	0.07%	5.23 Million
CO2 emissions (from fuel comb) per capita (2014)	34		
GDP Size ² , PPP (2014)	47	0.30%	307.97 billion int USD
GDP Size ² , exchange rates (2014)	26	0.63%	458.96 billion USD
UNDP human development index ³ (2015)	1		
GDP Structure ² , % (2013)	Agriculture: 2, Industry: 41, Services: 58		
Share of GDP ² , % (2013)	Imports: 28, Exports: 39		

C. CO2 emissions and related indicators

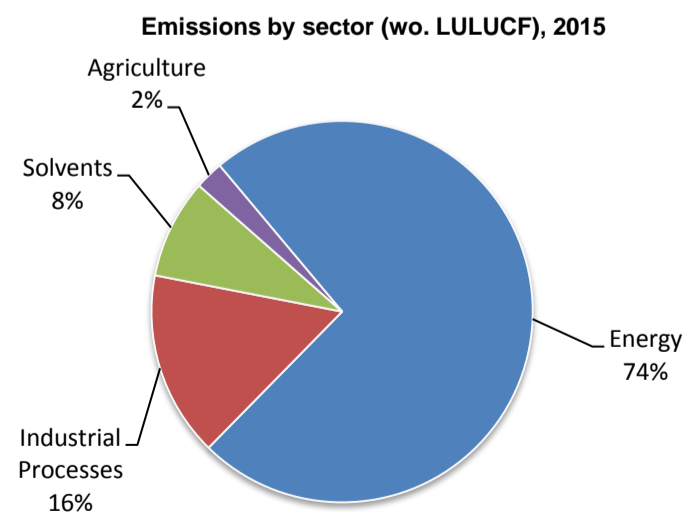
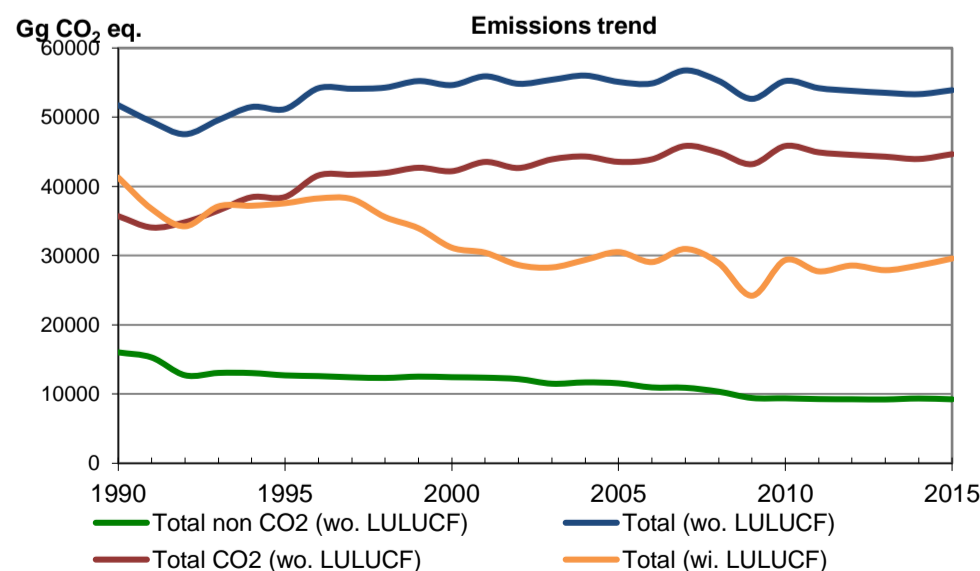
	Trend	1990	2000	2005	2010	2015	Change (%) 1990-2015	Growth rate (% per year) 1990-2015
Population, million ²		4.24	4.49	4.62	4.89	5.19	22.3	0.8
GDP (billions 2011 USD PPP) ²		181.66	260.78	290.75	304.44	330.36	81.9	2.4
TPES (Mtoe) ⁴		21.07	26.16	26.83	33.90	30.19	43.3	1.4
GHG emissions without LULUCF (kt CO2 eq)		51 728.79	54 639.17	55 106.17	55 233.41	53 908.19	4.2	0.2
GHG emissions with LULUCF (kt CO2 eq)		41 279.43	31 152.75	30 513.92	29 362.48	29 588.66	-28.3	-1.3
GDP per capita (thousand 2011 USD PPP)		42.83	58.07	62.89	62.27	63.67	48.7	1.6
GHG wo. LULUCF / capita (t CO2 eq)		12.20	12.17	11.92	11.30	10.39	-14.8	-0.6
GHG wo. LULUCF / GDP (kg CO2 eq per int USD)		0.28	0.21	0.19	0.18	0.16	-42.7	-2.2
TPES per capita (toe)		4.97	5.83	5.80	6.93	5.82	17.1	0.6

D. Energy profile⁴

	Trend 1990-2014	1990	2000	2005	2010	2014	Change (%) 1990-2014	Ratio of imports/exports to production (%) 1990	2014
Energy production		119.47	228.02	224.38	207.58	196.31	64.3	-	-
Energy imports		5.30	5.60	5.96	8.13	6.95	31.2	4.4	3.5
Energy exports		100.99	205.90	202.11	181.01	174.35	72.6	84.5	88.8

	Trend 1990-2014	1990	2000	2005	2010	2014	Change (%) 1990-2014	Share of TPES (%) 1990	2014
Oil		8.13	9.02	9.90	12.86	10.88	33.8	38.6	37.8
Coal		0.86	1.05	0.78	0.76	0.85	-1.48	4.1	3.0
Gas		1.98	4.14	4.07	7.75	4.94	149.96	9.4	17.2
Hydro energy		10.42	12.20	11.67	10.04	11.69	12.17	49.5	40.7
Nuclear energy		0.00	0.00	0.00	0.00	0.00	-	0.0	0.0
Combust. renewables & waste		1.03	1.36	1.37	1.70	1.44	40.06	4.9	5.0
Wind/Solar/Geothermal		0.00	0.00	0.04	0.08	0.19	-	0.0	0.7
Other (electricity trade)		-1.37	-1.64	-1.04	0.65	-1.34	-2.02	-6.5	-4.7
TPES		21.07	26.16	26.83	33.90	28.75	36.45	100.0	100.0

E. GHG emissions information reported to the UNFCCC⁵



Detailed emissions information reported by Parties can be accessed via the UNFCCC's

[Data Interface](#)

[1] Source : IEA, CO2 Emissions from Fuel Combustion 2016
 [2] Source : World Bank, World Development Indicators
 [3] Source : UNDP, Human Development Indicators

[4] Source : IEA, World Energy Balances 2016
 [5] Source : Information communicated by Parties to the Convention to the secretariat in their national communications, greenhouse gas inventory reports or biennial update reports