



FRAMEWORK CONVENTION ON CLIMATE CHANGE - Secretariat  
CONVENTION - CADRE SUR LES CHANGEMENTS CLIMATIQUES - Secretariat

**First technical workshop on the revision of the guidelines for the review of biennial reports and national communications, including national inventory reviews, for developed country Parties**

Bonn, Germany  
7 – 9 October 2013

**General Information Sheet**

**1. WORKSHOP VENUE**

United Nations Campus  
“Langer Eugen” (room 1916)  
Hermann-Ehlers-Str. 10  
53113 Bonn, Germany  
Tel.: (+49 228) 815 1368 or 1269  
Fax: (+49 228) 815 0350

**2. TRANSFER FROM THE AIRPORT TO BONN**

**From Bonn/Cologne Airport:**

The Airport Express SB 60 takes you from the departure terminal Cologne/Bonn Airport directly to Bonn Central Station and back.

The Airport Express SB 60 operates every 30 minutes on weekdays between Bonn and the airport and every 30 or 60 minutes on Saturdays and Sundays. The 25 km bus journey to the airport takes 27 minutes (the return trip to Bonn takes 32 minutes).

One-way tickets cost EUR 6.90. Some airlines offer a combined ticket that includes the bus ticket. The Airport Express provides 42 seats and is equipped with baggage storage areas.

The ticket can be purchased from the bus driver. You can use this ticket as a “City ticket” to travel by bus or tram to your final destination within Bonn (Please validate your ticket at the red validation machine in the bus or tram in Bonn).

There is only one bus stop at the airport for the bus to Bonn. The bus stop is located at Terminal 1. When travelling to the airport, the bus stops at Terminal 1.

For additional information and timetables, please see:

<http://en.swb-busundbahn.de/service/airport-express-sb60.html>

[http://www.bonn.de/tourismus\\_kultur\\_sport\\_freizeit/tourist\\_information\\_aktuell/tourismus\\_und\\_hotels/anreisen/index.html?lang=de](http://www.bonn.de/tourismus_kultur_sport_freizeit/tourist_information_aktuell/tourismus_und_hotels/anreisen/index.html?lang=de)

<http://www.koeln-bonn-airport.de/main.php?id=122&lang=2>

- **By taxi:**

Taxis are always available at designated stands, but are quite expensive, about EUR 40 from the Bonn/Cologne airport

- **By railway:**

One has the option to get off at Bonn Hauptbahnhof (less than 3 km to the workshop venue), at Siegburg (ICE 3 from Frankfurt Airport, please change to tram 66 to go to Bonn Central station, which takes about 25 minutes) or at Bad Godesberg train station (Please note that not all trains stop in Bad Godesberg! Less than 6 km to the workshop venue).

Please check the link below for more information schedules:

[<http://www.bahn.de/i/view/USA/en/index.shtml>](http://www.bahn.de/i/view/USA/en/index.shtml)

**From Frankfurt airport:**

There is a fast train (Intercity train) from Frankfurt airport to Siegburg/Bonn. From Siegburg you can take a taxi (+49 228 555 555) to the UN Campus.

Alternatively there is a slower train going directly to Bonn City centre departing every hour.

For more details, visit the Frankfurt airport website

[<http://www.frankfurt-airport.com/content/frankfurt\\_airport/en/directions\\_parking/arriving\\_by\\_bus\\_ortrain.html>](http://www.frankfurt-airport.com/content/frankfurt_airport/en/directions_parking/arriving_by_bus_ortrain.html)

**By car:**

**From Frankfurt/Hannover/Ruhrgebiet:**

- A3 motorway to Bonn/Siegburg intersection,
- A560 motorway towards Bonn until St. Augustin junction,
- A59 motorway towards Bonn-Bad Godesberg until Bonn-Ost (42) intersection,
- A562 motorway, keep right until exit (Anschlussstelle) Bonn-Rheinaue,
- Turn right onto Franz-Josef-Strauss-Allee towards Bonn-Rheinaue,
- First exit on the right into Charles-de-Gaulle-Str.,
- Follow the road and pass the Post Office area,
- When you reach the Rhine, the first exit on the left is the Hermann-Ehlers-Str.,
- Follow Hermann-Ehlers-Str. until you reach the UN Campus

**From the South-West of the Rhine:**

- A61 motorway until Meckenheim intersection,
- A565 motorway towards Bonn,
- Poppelsdorf exit, towards Bad Godesberg (B9),
- After “Reuterbruecke” bridge keep right and follow the road to the right into Adenauerallee,
- Second exit on the left towards the Heussallee,
- At the second traffic light turn right into Kurt-Schumacher-Str.,
- First exit on the left into Franz-Josef-Strauss-Str.,
- Then use the next possibility to exit on the left and turn into Charles-de-Gaulle Str.,
- Follow the road and pass the Post Office area,
- When you reach the Rhine, the first exit on the left is the Hermann-Ehlers-Str.,
- Follow Hermann-Ehlers-Str. until you reach the UN Campus.

**Note for visitors**

There is little space for car parking at the UN Campus. However, cars can be parked in one of the parking areas you pass along Charles-de-Gaulle-Str. Located on the back of the campus at the river side, there is a big parking space. The cost for parking the whole day is EUR 5.

### 3. ACCOMMODATION

For hotel accommodations, kindly check the following websites:

[<http://www.carisma-engine.de/Search/Hotel/searchBHotel.asp>](http://www.carisma-engine.de/Search/Hotel/searchBHotel.asp)

[<http://www.hrs.com/web3/>](http://www.hrs.com/web3/)

### 4. TRANSPORTATION TO U.N. CAMPUS

#### **By Taxi**

The fare for a taxi to “Langer Eugen” from most places in Bad Godesberg should not exceed EUR 10–15 depending on where you are coming from. The fare from Bonn City centre is approximately EUR 15.

#### **By Tram (U-Bahn)**

Number 16, 63 and 66

Tram stop: Heussallee

#### **By Bus**

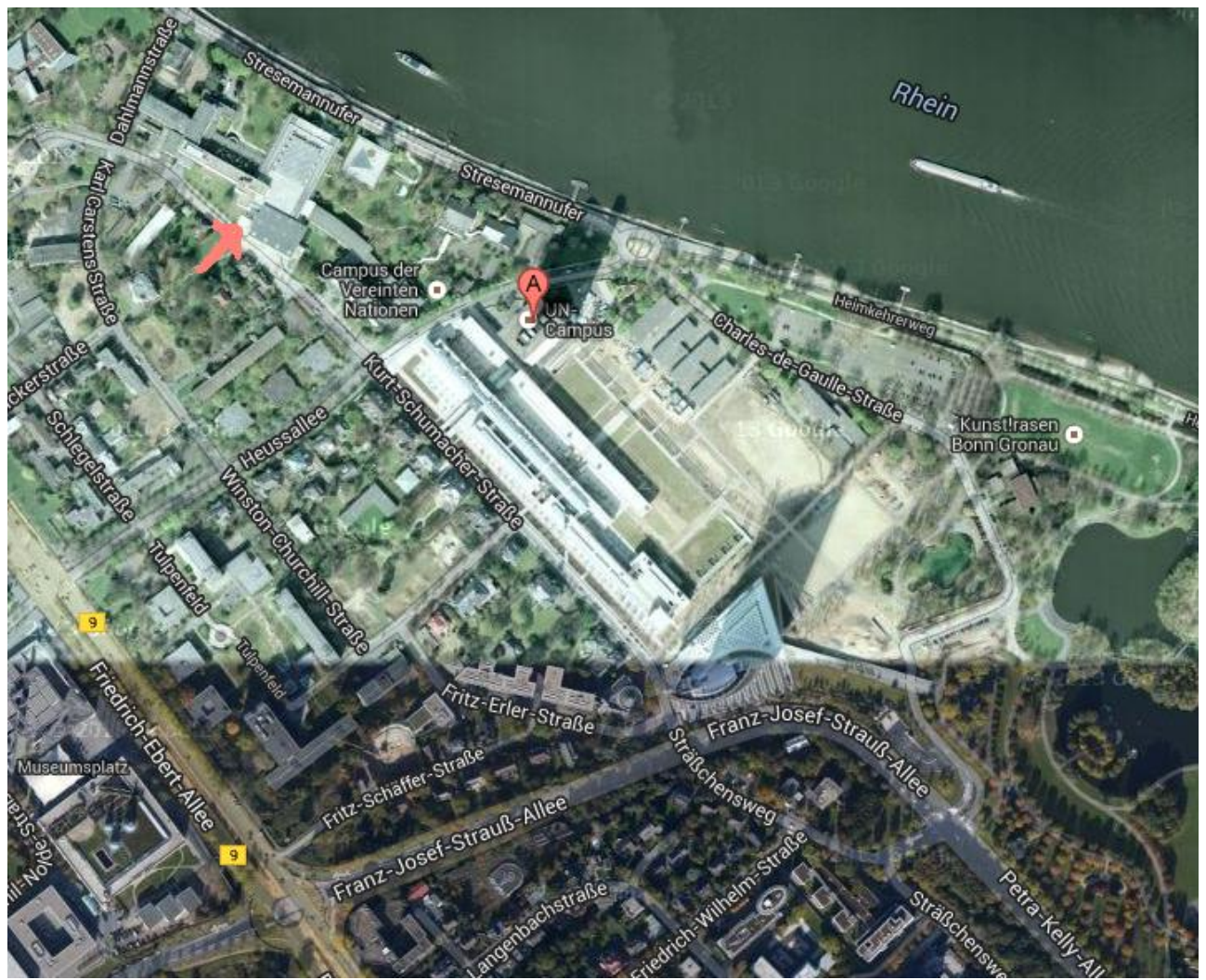
**Bus from Bonn City centre (Hauptbahnhof):** Number 610 (bus stop: “Deutsche Welle”)

Take bus number 610 (direction Heiderhof) from Bonn City centre. The bus stop is located across the street from the main train station (Hauptbahnhof). Get down at the stop “Deutsche Welle”, it will take approximately 10 minutes.

**Bus from Bad Godesberg:** Number 610 and 611 (bus stop: “Deutsche Welle”)

Take bus number 610 or 611 from “Rheinallee”. The bus stop is located just behind the main subway station in Bad Godesberg. Get down at the stop “Deutsche Welle”, it will take approximately 10 minutes.

The main security entrance is located on Platz der Vereinten Nationen. If you take the bus 610 or 611, the main security guard house is directly in the corner (it can be seen from the bus stop).



For additional information, please see:

<http://www.vrsinfo.de/englisch/the-vrs/vrs-about-us.html>

[http://www.bonn.de/tourismus\\_kultur\\_sport\\_freizeit/tourist\\_information\\_aktuell/tourismus\\_und\\_hotels/anreisen/index.html?lang=de](http://www.bonn.de/tourismus_kultur_sport_freizeit/tourist_information_aktuell/tourismus_und_hotels/anreisen/index.html?lang=de)

**Bike rental**

Radstation am Hauptbahnhof  
Quantiusstr. 26 (next to main train station Bonn)  
53115 Bonn  
Tel.: +49 228 981 4636

Opening hours:

Monday – Friday: 18:00 h – 22:30 h  
Saturday: 19:00 h – 22:30 h  
Sunday: 20:00 h – 22:30 h

Drahtesel  
Moltkestraße 10  
53173 Bonn, Godesberg  
Tel.: +49 228 361 545

Opening hours:

Monday – Friday: 10:00 h – 13:00 h  
14:00 h – 19:00 h  
Saturday: 10:00 h – 16:00 h  
Rental price: 7.50 € (daily)  
40.00 € (week)

**5. ELEVATORS IN “LANGER EUGEN”**

Please note that the two elevator groups service different floors!  
The elevators directly behind the security desk service floors ‘O’ to ‘17’.  
The elevators to the left of the security desk service from the ground floor straight to floors ‘17’ to ‘29’, however going down wards they service every floor.  
This is also indicated in front of the elevators.

**6. CONTACT PERSON IN BONN (IN CASE OF EMERGENCY):**

**Mr. Javier Hanna Figueroa**  
Team Lead, UNFCCC  
Tel.: (+49 228) 815 1368  
Fax: (+49 228) 815 0350  
E-mail: [jhanna@unfccc.int](mailto:jhanna@unfccc.int)

**Ms. Sarah Klinghammer**  
Team Assistant, UNFCCC  
Tel.: (+49 228) 815 1269  
Fax: (+49 228) 815 0350  
E-mail: [sklinghammer@unfccc.int](mailto:sklinghammer@unfccc.int)



## 7. VISA

Participants requiring entry or transit visas to Germany are strongly encouraged to contact the appropriate consular authorities as soon as possible. A copy of the letter of invitation should be presented to facilitate visa issuance. If further assistance is required, please contact the secretariat (sklinghammer@unfccc.int).

## 8. DAILY SUBSISTENCE ALLOWANCE (DSA)

DSA for funded participants is Euro 236/day, calculated for the duration of the workshop (7–9 October 2013), and will be distributed in cash at the on Monday, 7 October 2013.

## 9. CASH TELLER

Available in the foyer of the “Langer Eugen” UN building.

**Please have the following documents present when claiming DSA: passport, flight ticket and boarding passes.**

## 10. CATERING

Water bottles are available in the rooms.

Coffee breaks will be served at 10:45 and 16:00.

On Monday evenings we would like to invite you to a small “get together” at 18:30 on the 10th floor.

## 11. PARTICIPANTS’ CENTRE

The Participants’ Centre is located on the 19<sup>th</sup> floor. Computers and a printer is available for participants. These computers provide Internet access and are equipped with word processing and spreadsheet software.

## 12. GENERAL INFORMATION ON FEDERAL REPUBLIC OF GERMANY

Time zone:	GMT + 1
Currency:	Euro (€)
Current exchange rate:	1.00 US\$ = 0.75 Euro
Credit Cards:	Worldwide-recognized credit cards are mostly accepted.
Official language:	German
Electricity:	230V 50Hz
Electric Plug Details:	Two round pins



Telephone country code: +49

Health: No vaccinations required for travelling to Germany; but the World Health Organization, recommends that all travellers should be covered for diphtheria, tetanus, measles, mumps, rubella and polio, regardless of their destination.

Temperature/Weather: In October weather can be sunny and warm. Daytime temperatures usually vary between 7°C and 14°C, at night temperatures can already fall below 4°C, mix of cloudy and clear skies, rainy weather and quick showers possible.

Value added tax (VAT): Prices for goods and services include VAT of 19% for regular goods and 7% for food and books. If permanent residence is outside the European Union, a large portion of the VAT may be refunded provided shopping is done at stores displaying 'Tax-Free for Tourists' signs by completing tax-free form and presenting it to the custom officials at the airport before checking in. Said form, after being checked and stamped by the officials should be taken to specific counters for cash refund.

For additional information: Please visit <http://www.bonn.de/index.html?lang=en>.

### **Notices – anything else I should know?**

You can call the following emergency numbers for assistance:

Police – Tel: 110

Fire brigade – Tel: 112

Emergency doctor / ambulance – Tel: 112

Telephone information service:

Tel: 11833 (national)

Tel: 11834 (international)

### **Where to eat in Bonn**

For information on places to eat in Bonn, please visit the following link

[http://www.bonn.de/service/suche/index.html?first=false&lang=en&search\\_text=restaurant](http://www.bonn.de/service/suche/index.html?first=false&lang=en&search_text=restaurant)

### **Information about Bonn**

#### **Train services**

Bonn Main Railway Station

("Bonn Hauptbahnhof")

Tel: +49 1805 99 66 33

Bad Godesberg Railway Station

("Bad Godesberg Bahnhof")

Tel: +49 228 36 32 48

### **IMPORTANT NOTICE**

Please note that the UNFCCC secretariat **is not responsible** for medical, accident and travel insurance, for death or disability compensation, for loss or damage to personal property and for any other costs or losses that may incur during travel time or the period of participation. In this context, it is strongly recommended that international medical insurance be obtained prior to the period of participation.

We look forward to welcoming you in Bonn!

## Annex 1

United Nations Campus in Bonn, Langer Eugen, Hermann-Ehlers-Str. 10, D-53113 Bonn

