

INTENDED NATIONALLY DETERMINED CONTRIBUTION: PROCESS & CONTENT

DURBAN FORUM



*UNFCCC,
08/06/2015*

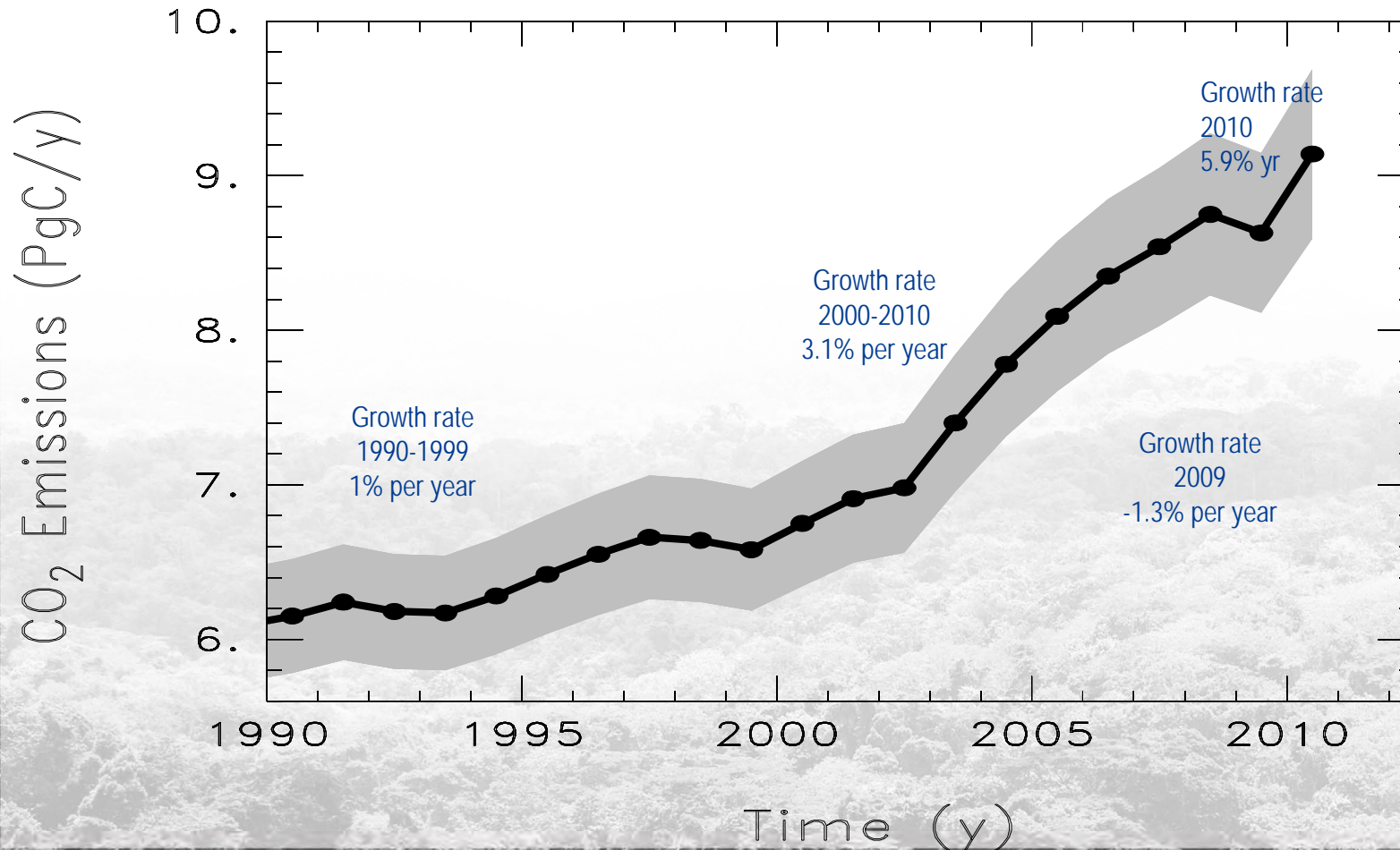


RÉPUBLIQUE GABONAISE
Conseil National Climat



The Context

Evolution of global CO2 emissions since 1990





Cocobeach



Cliff at Santa-Clara



Erosion at Sablière



Erosion at Sea front of Libreville

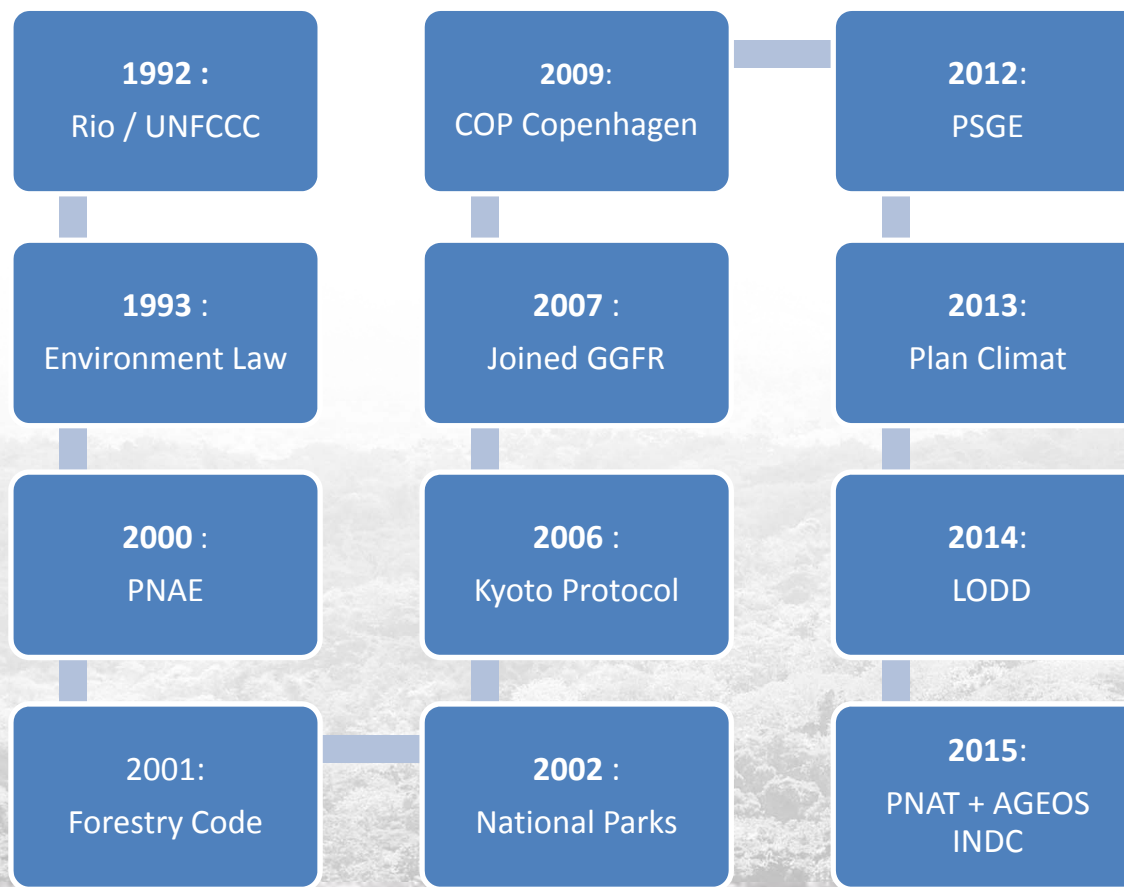


Erosion at Cap Lopez



The Context

Historic



The Context

... From environmental awareness

...to an economic strategy

**Transforming constraints into economic
and social sustainable opportunities**

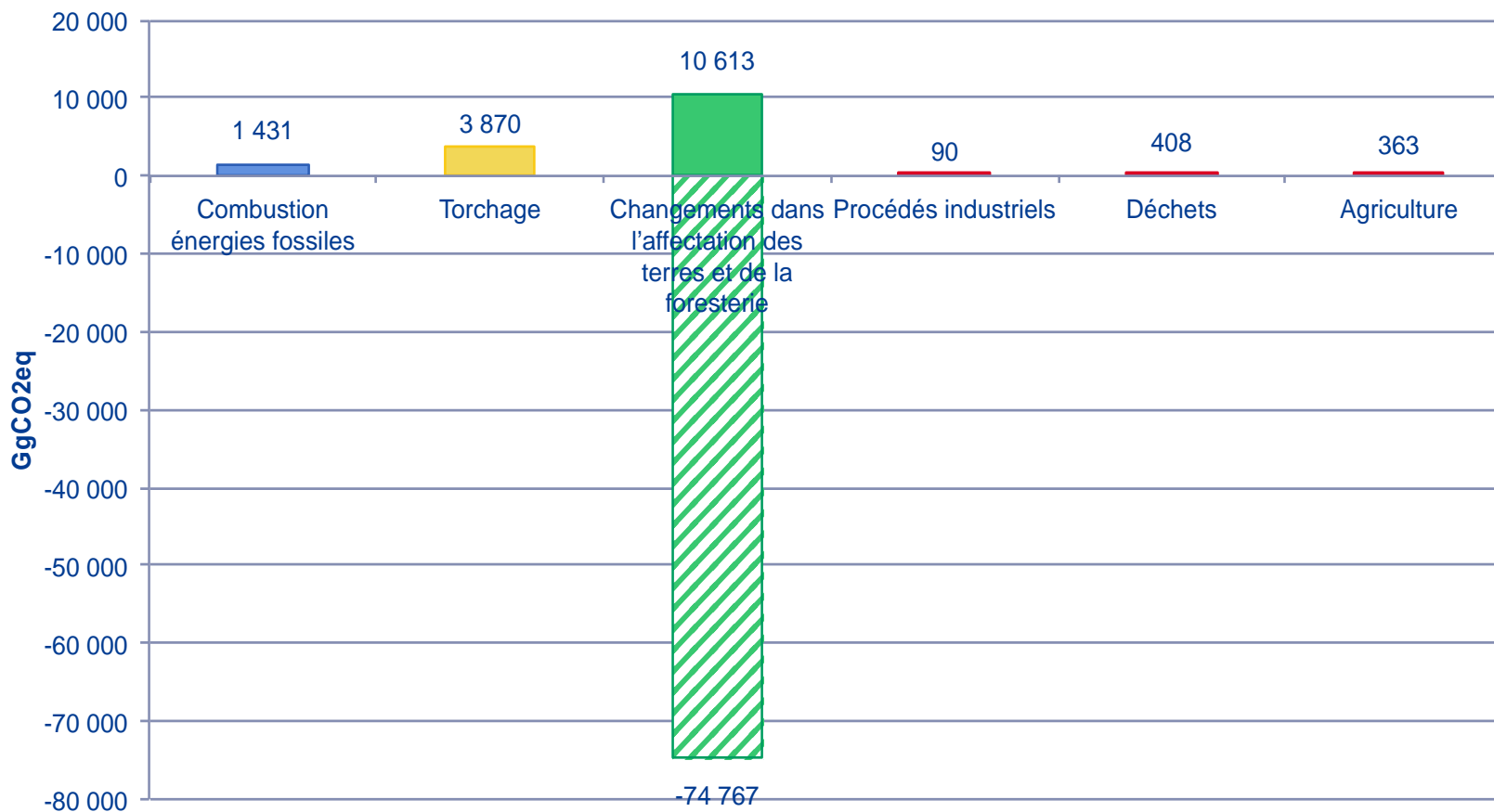
=

**Anticipate to better
control the future**



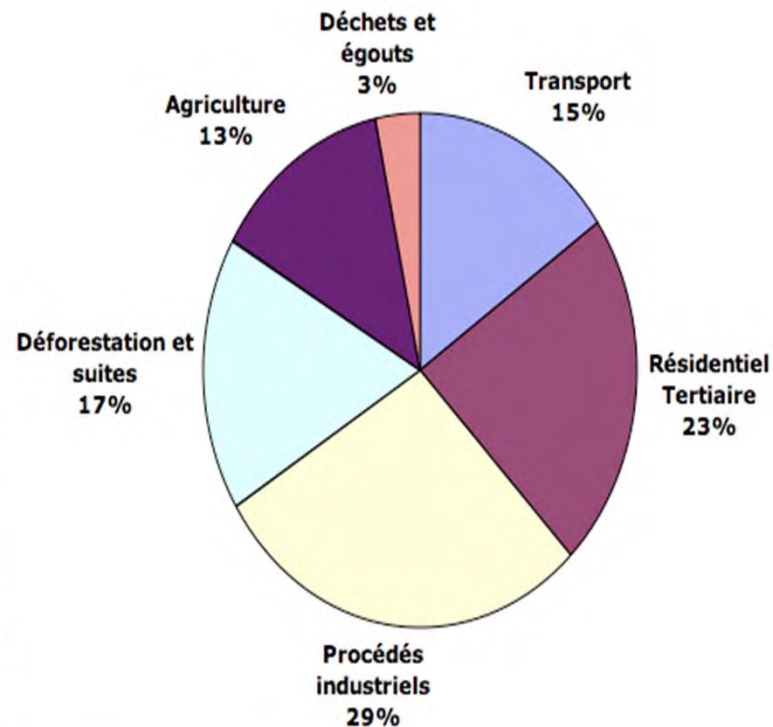
GHG emission profile

Inventaire des émissions de GES (2000)

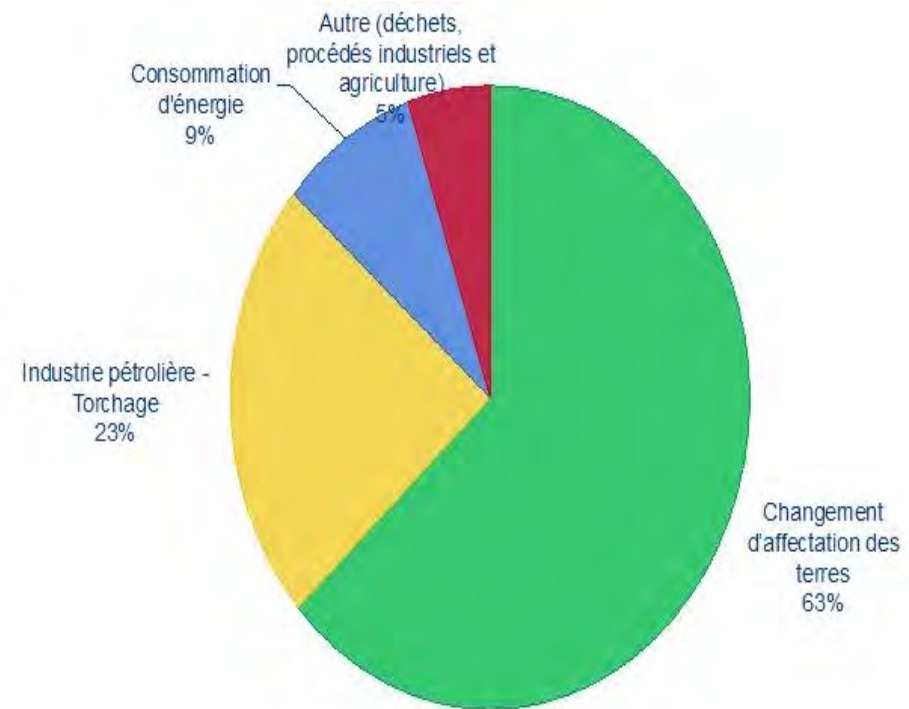


GHG emission profile

In the world



In Gabon



Public policies

Land Use and Land Use Change

- Land Use National Plan
- Creation of National Parks
- Setting up a forestry code
- Prohibiting exports of wood logs

Flaring

- Flaring Reduction Plan
- Development of gas-fired power plants

Energy

- Hydroelectric dams (Grand Poubara, Fe II, Empress)
- Prohibition of heavy fuel oil and replacement with gas
- Development of renewable energy (excluding hydro)

Others

- Development of a national carbon diagnostic tool
- Development of renewable energy
- Ban on import of vehicles over 3 years



The Methodology

Data collection:

Detailed review of important data on each sector with high climate impact

Technical meetings:

Formulating hypotheses and scenarios

Writing:

Agglomeration information and put into perspective



The Methodology

Stakeholders:

Public sectors

Foreign Affairs

Political leadership of climat negotiations

National Climate Council

Technical coordination of the drafting of the INDC

Ministry and Technical Agency

- Data sources and explanations necessary for structuring the INDC
- Ensures the implementation of public policies



The Methodology

Stakeholders: private sectors

Meetings with key players in the carbon-intensive sectors:

Secteur Agricole

- Programme Graine,
- OLAM,
- SIAT Gabon

Secteur Pétrolier

- TOTAL,
- SHELL,
- PERENCO,
- ADDAX,
- MAUREL ET PROM,
- CNRI



The Content

TYPE OF ENGAGEMENT	Reduction compared to uncontrolled development scenario
SCOPE	Total GHG emissions beyond carbon storage in forest biomass
GHG	CO ₂ , CH ₄ , N ₂ O
Reference year	2000
PÉRIODE	2010-2025 (framework time of the Strategic Plan Gabon Emergent)
LEVEL OF REDUCTION	At least 50% reduction in emissions compared to uncontrolled development scenario in 2025
CARBONE CREDITS	No discount for purchasing carbon credits from Gabon



PUBLIC POLICIES :

ENERGY:

1- Carbon Diagnostic

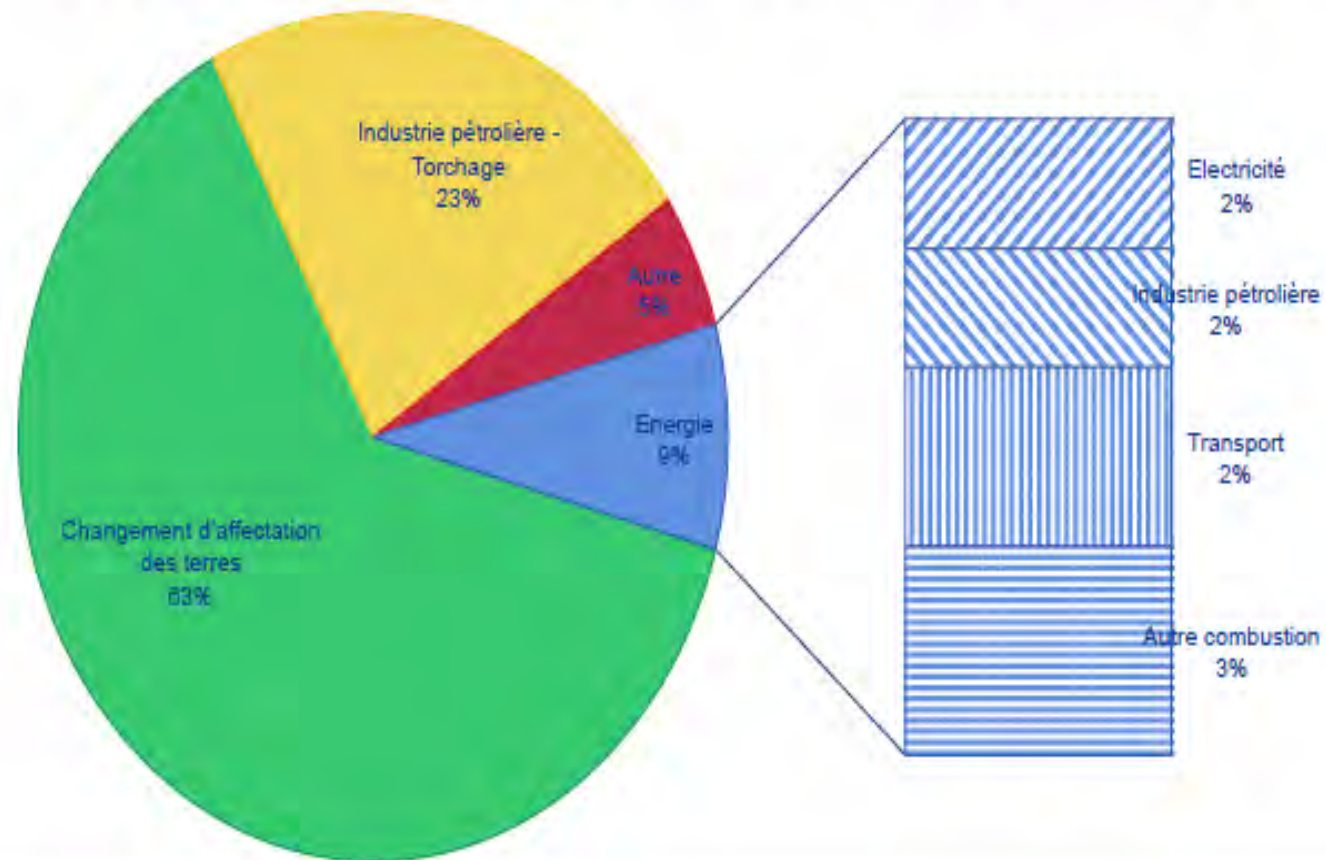


RÉPUBLIQUE GABONAISE
Conseil National Climat

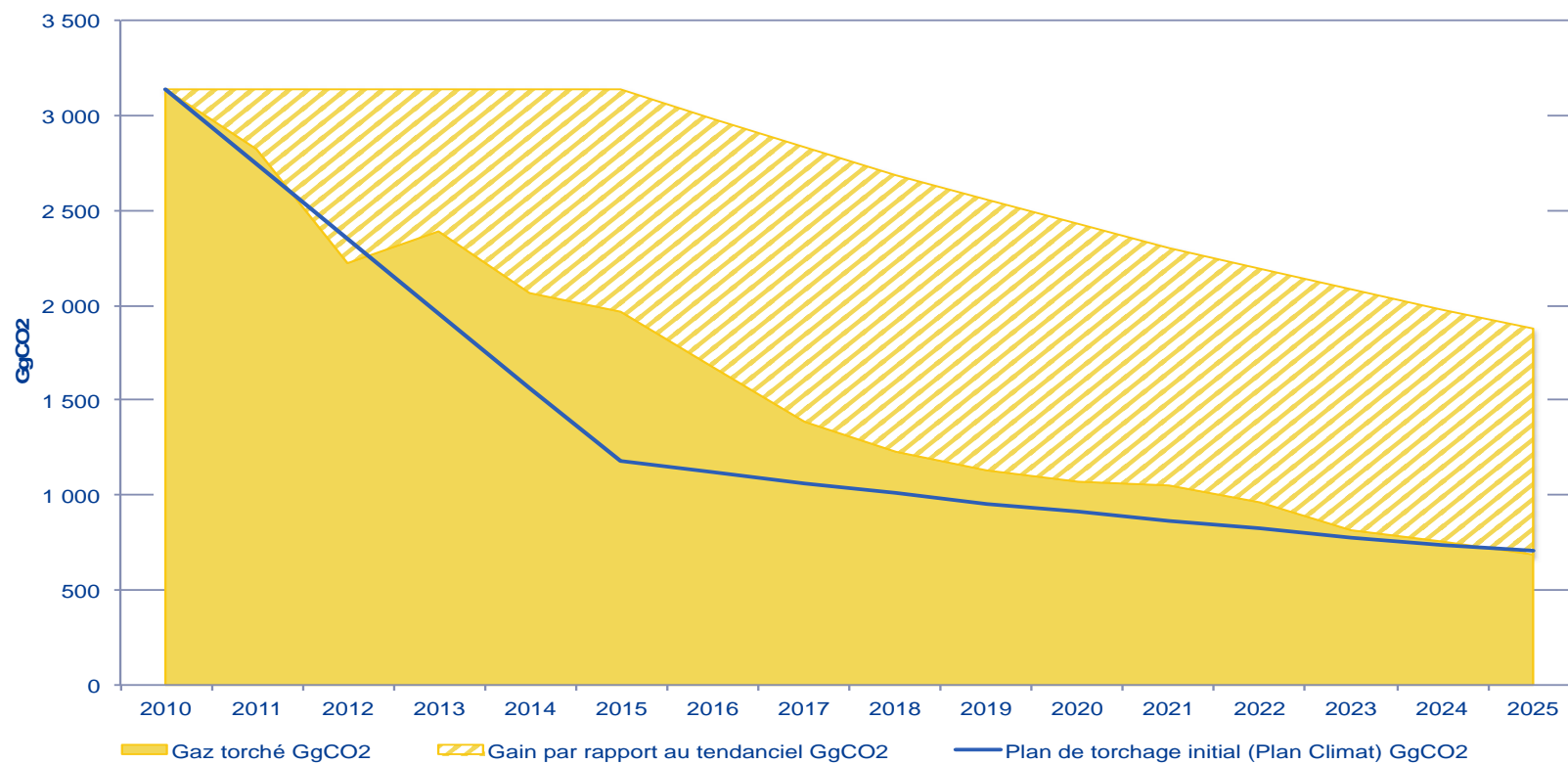


The Content : ENERGY

Les émissions liées à la combustion locale d'énergies fossiles représentent le 3ème poste d'émissions.



The Content : GAZ FLAIRING



The National Flaring Reduction Plan is built on the basis of:

- commitments of each oil operator
- the organization by the State of a gas market

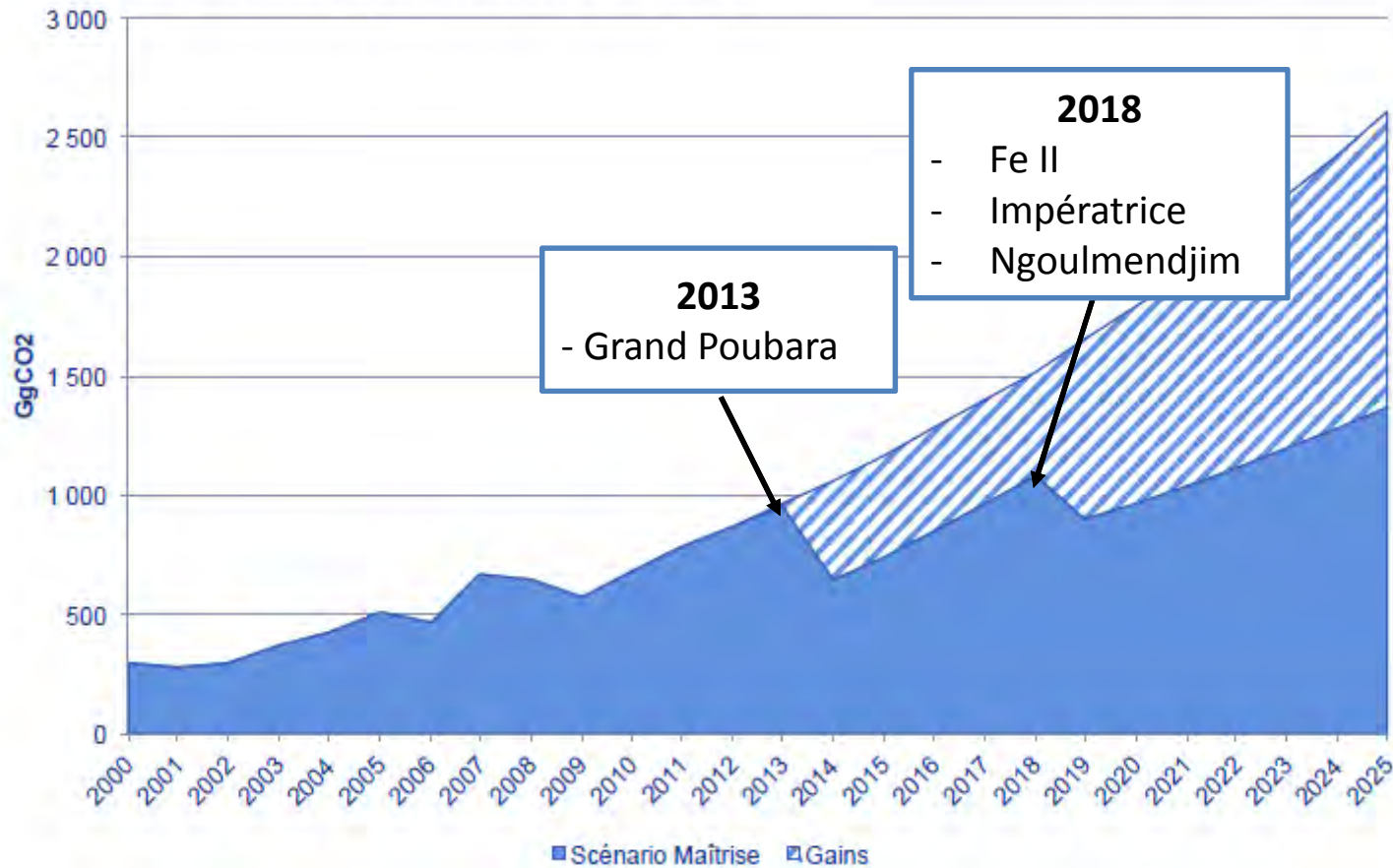


RÉPUBLIQUE GABONAISE
Conseil National Climat



The content : Electricity

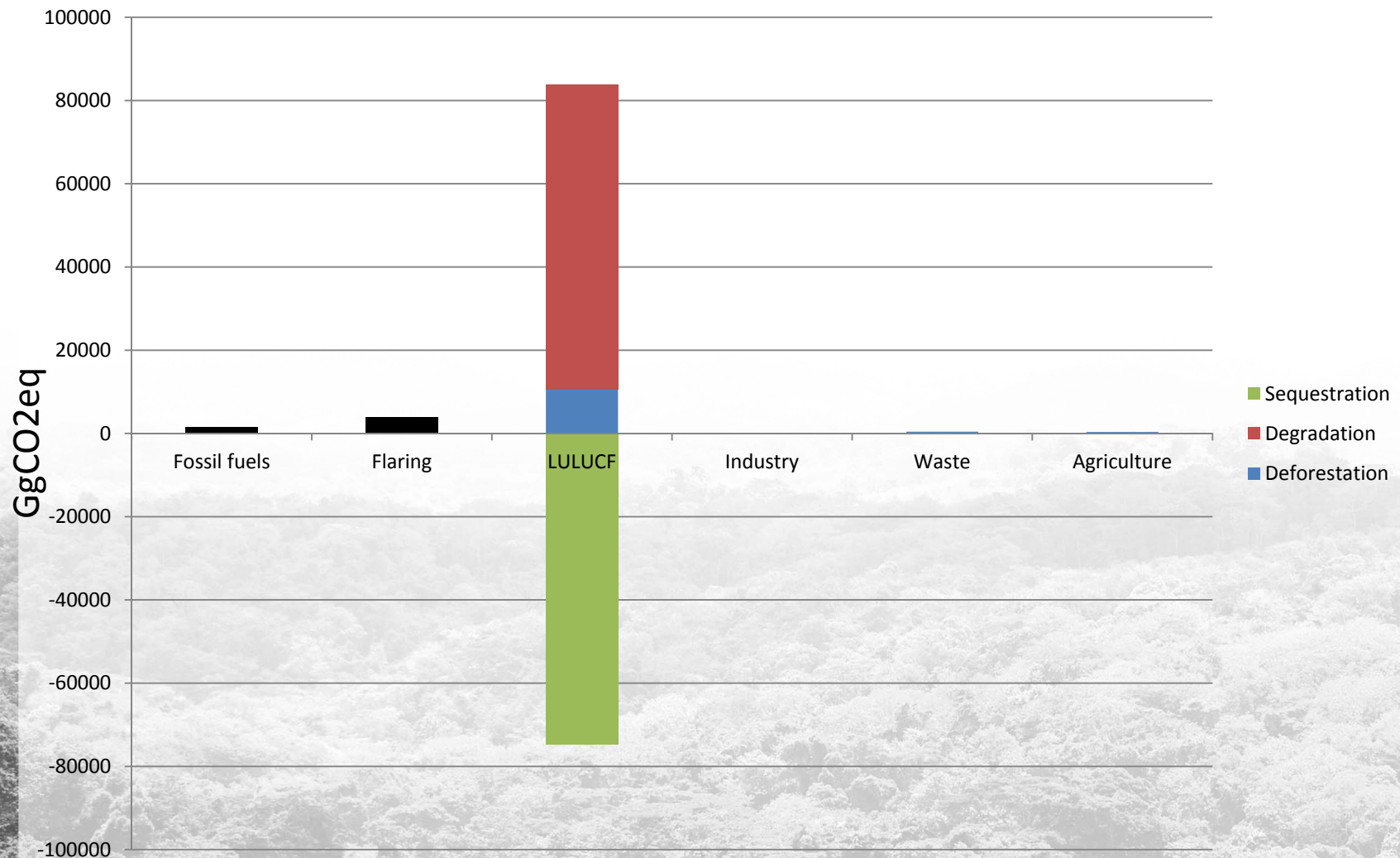
Sur cette base, ce plan permettra de réduire les émissions de GES de 9 000 GgCO₂ sur 2010-2025, soit 31% par rapport au scénario tendanciel (48% en 2025).



PUBLIC POLICIES :
LAND USE AND LAND USE CHANGE:
1- Land Use National Plan



GHG emission profile 2000



The philosophy of Gabon's commitments

- Population growth of 2.5% per year
- Economic growth (excluding oil sector) of 10% per year from 2010

Scénario 1: Business As Usual

- "Trend" scenario which corresponds to a classic economic development

Scénario 2: Mitigation

- "Mastered" scenario taking into account all the public policies implemented after 2000 such as:
 - the Forest Code,
 - National parks,
 - The National Land Use Plan
 - National Flare Reduction Plan and,
 - Strategic planning PSGE with its industrial development to low carbon.



Public policies: LULUCF

Land Use National Plan (PNAT)



« Action 9

Plan National d'Affectation des Terres

The MAP will guarantee the
balance between the different
uses of the land.

It will avoid conflicts born of
multiple assignments of the same
land for incompatible uses.»



Public policies: LULUCF

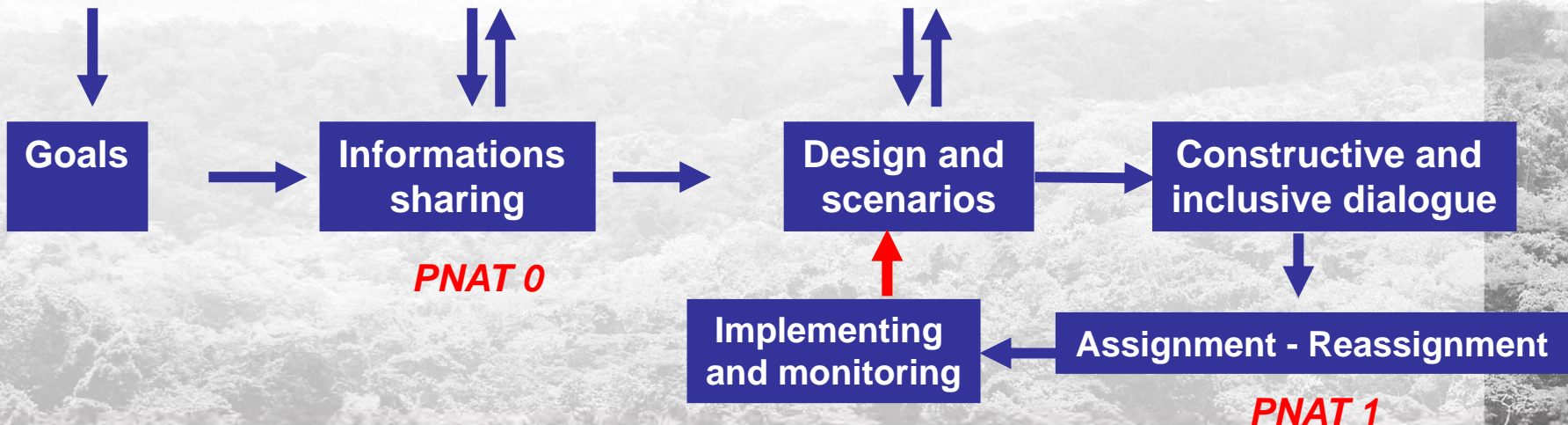
Methodological approach : PNAT

PSGE
↓

Main sectors using large area:



Legal and institutional framework



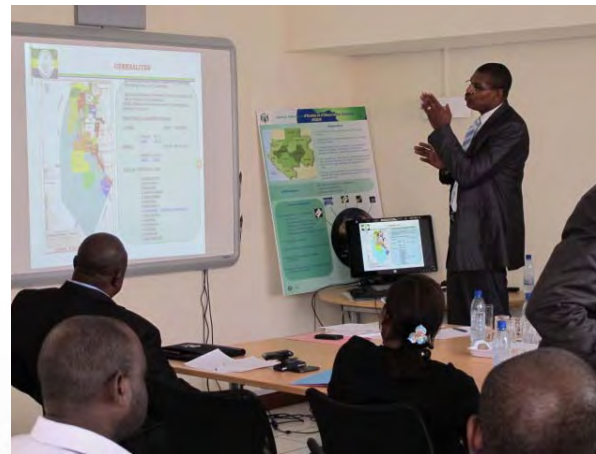
Land Use National Plan

PNAT 0: Meeting

Ministry of Mines



Ministry of oil



Infrastructure Agency



National Parcs Agency



Ministry of water and forest



Ministry of Agriculture



Land Use National Plan

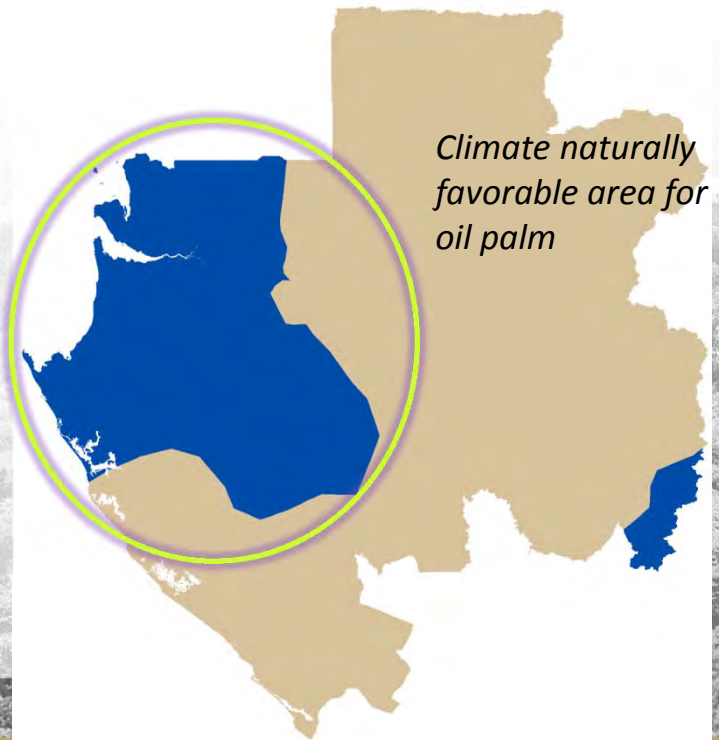
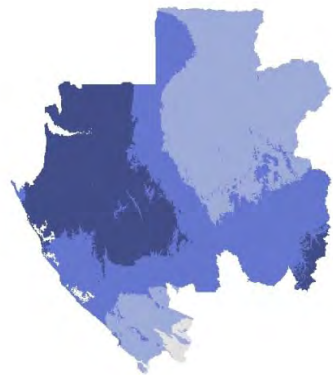
eg : Locate favorable land for agriculture

Oil Palm case study

Climat favorable

annual rainfall

Seasonality: large and small dry season



mm / an	
> 2000	Pas de limite
1700 – 2000	Mineur
1450 – 1700	Moyen
1250 – 1450	Limité

<100 mm / mois	
0	Pas de limite
1	Mineur
1-2	Moyen
2-3	Limité
>3	Très-limité

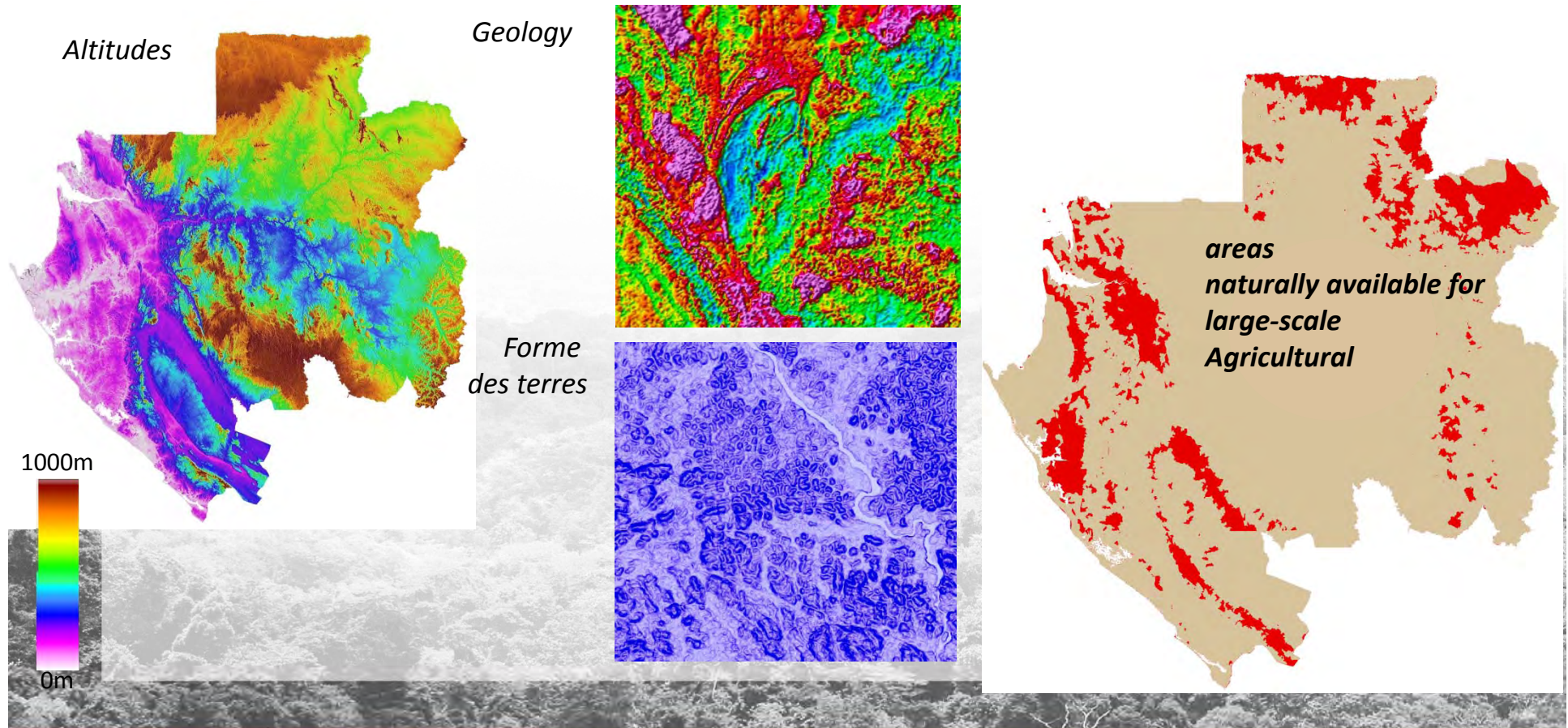


Land Use National Plan

eg : Locate favorable land for agriculture

Palm case study

Relief, géologie et accessibilité des terres favorables



Land Use National Plan

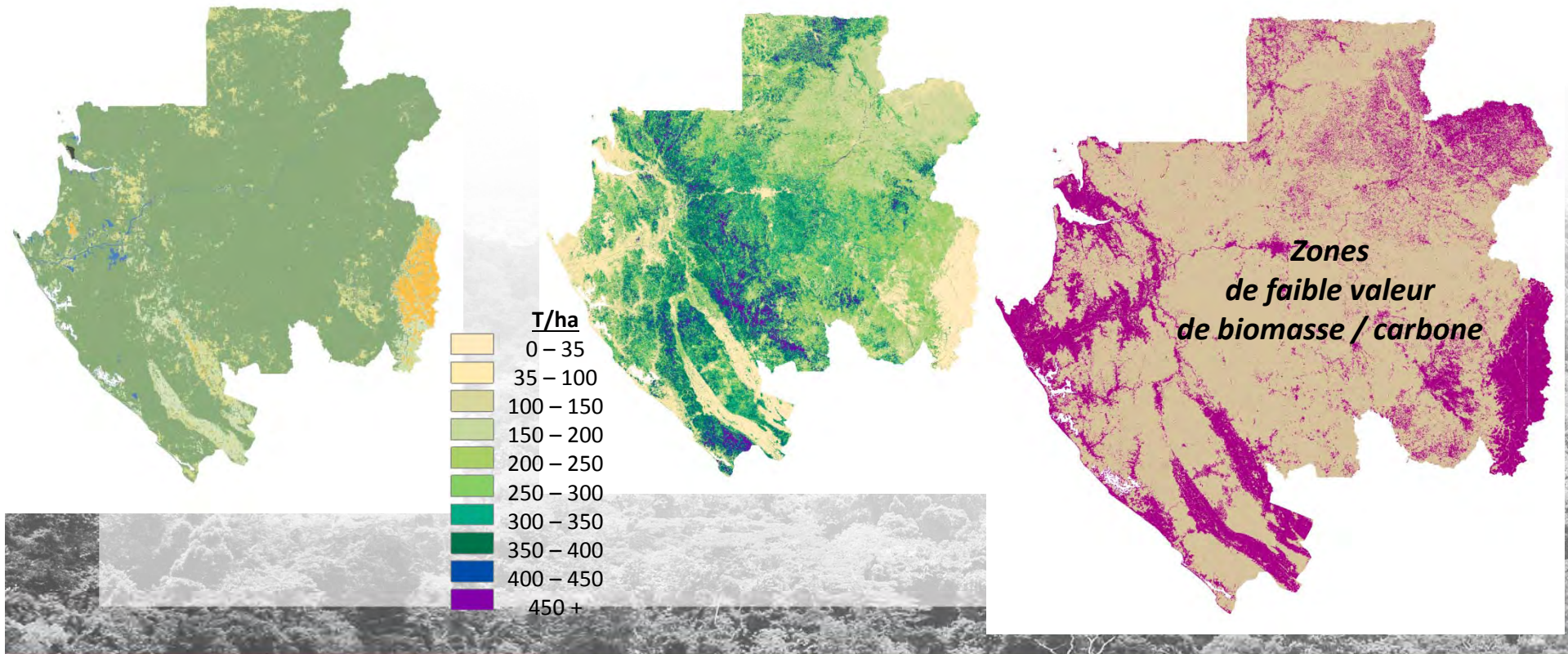
Exemple : Localisation des terres favorables à l'agriculture

Palm case study

Minimiser la perte des habitats et l'émission de carbone due à la déforestation

Habitats naturels

Carbone au-dessous du sol



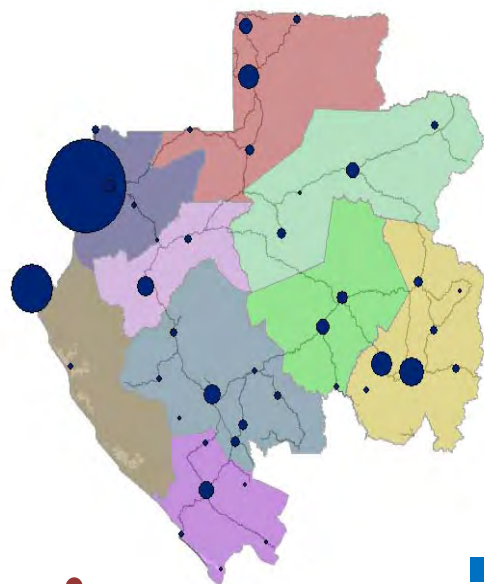
Land Use National Plan

Exemple : Localisation des terres favorables à l'agriculture

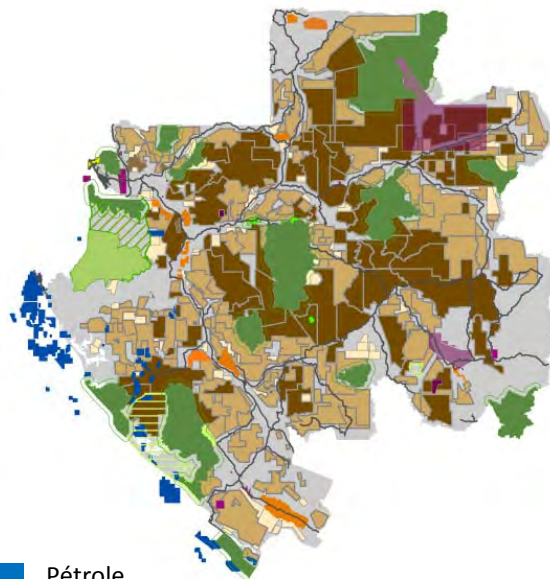
Palm case study

Accès aux infrastructures et travailleurs; Minimiser conflit avec d'autres usages de terre

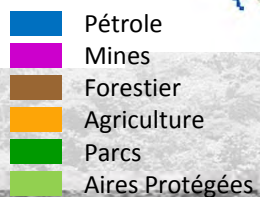
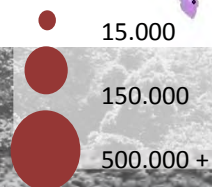
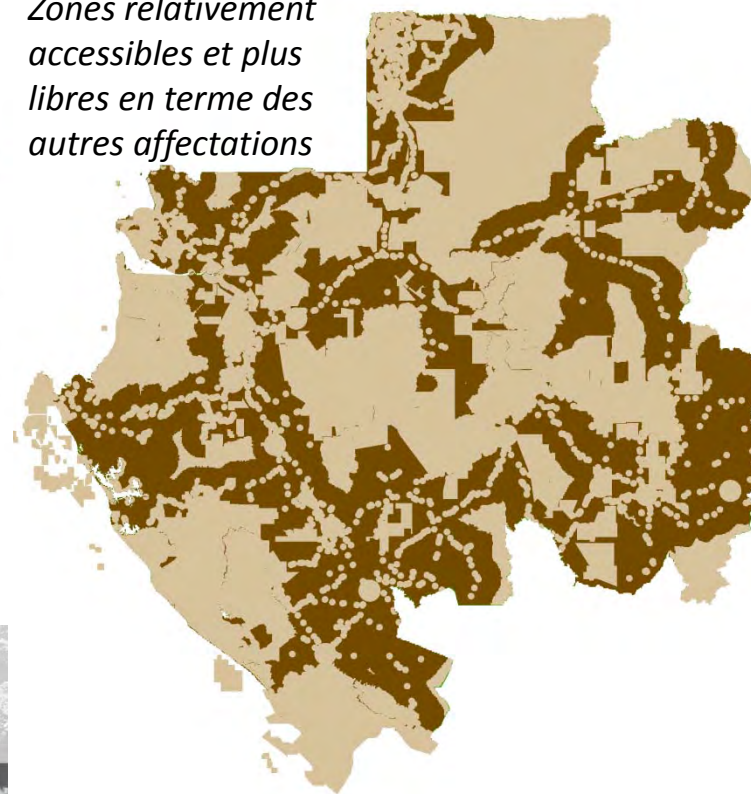
Population et infrastructures



Autres affectations des terres



Zones relativement accessibles et plus libres en terme des autres affectations

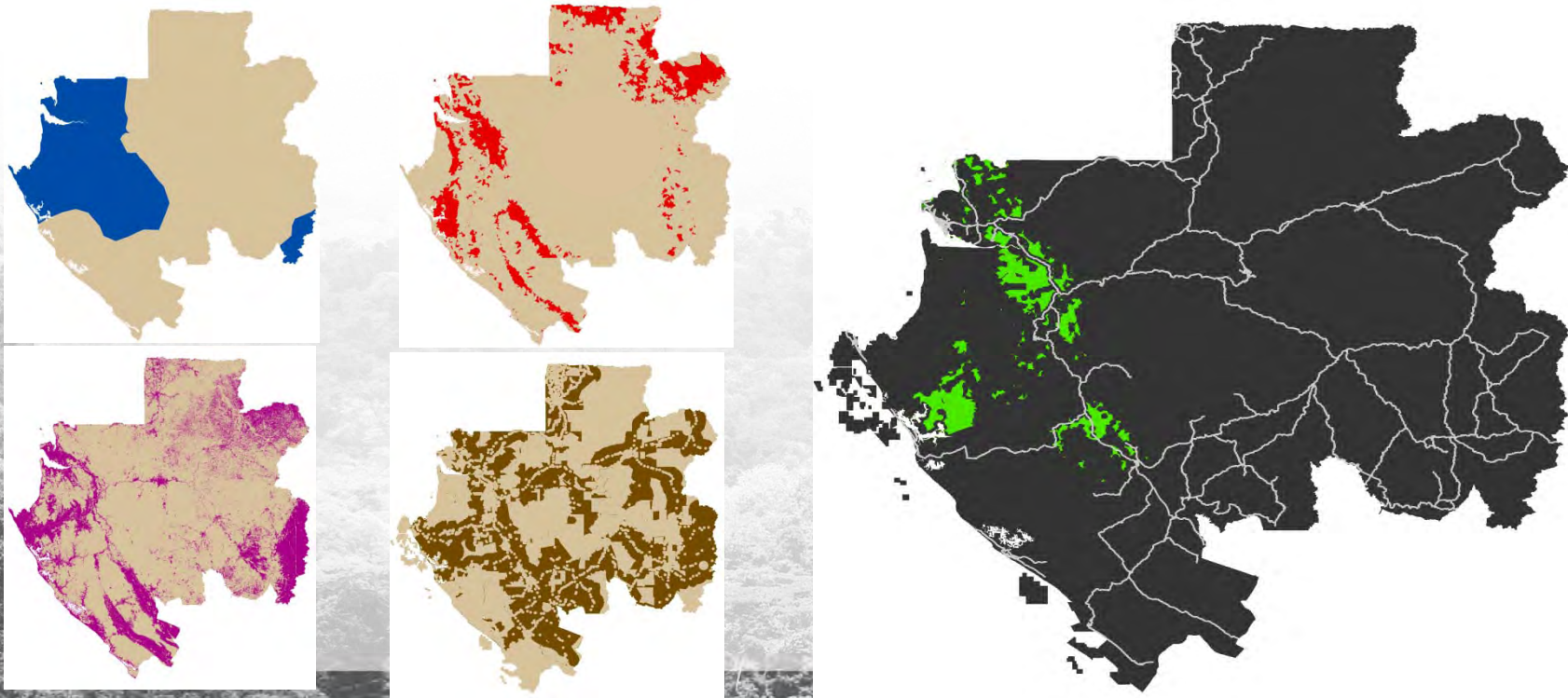


Land Use National Plan

Exemple : Localisation des terres favorables à l'agriculture

Cas d'étude du palmier

Synthèse des critères multiples



RÉPUBLIQUE GABONAISE
Conseil National Climat

Land Use National Plan

Exemple : Localisation des terres favorables à l'agriculture

Cas d'étude du palmier

Une planification cohérente Terre - Mer

Zone de pêche artisanale très importante

Zone importante pour la protection des eaux



RÉPUBLIQUE GABONAISE
Conseil National Climat



PUBLIC POLICIES :
LAND USE AND LAND USE CHANGE:
3- National Inventory of Natural Resources

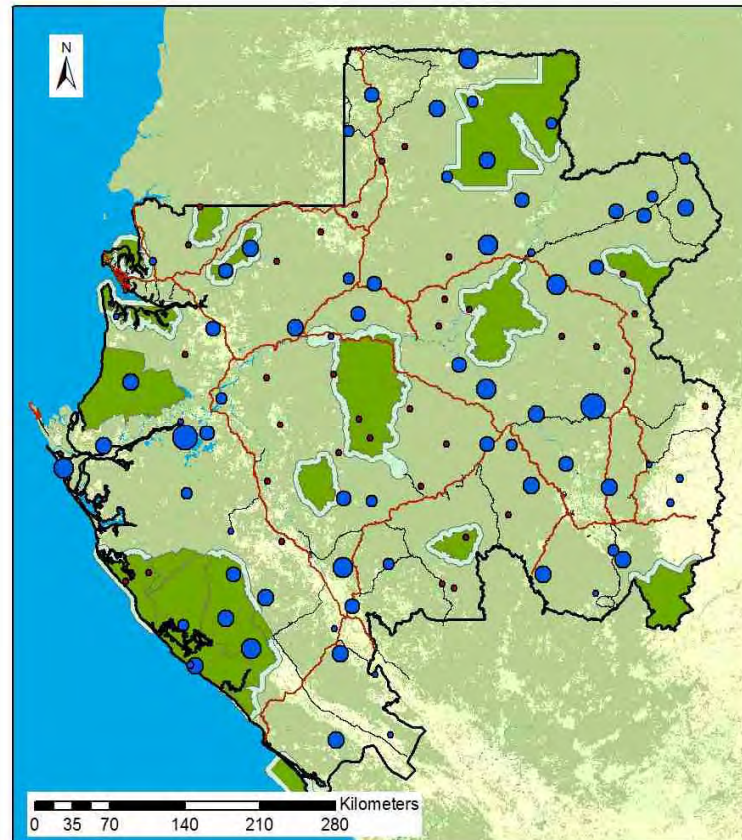
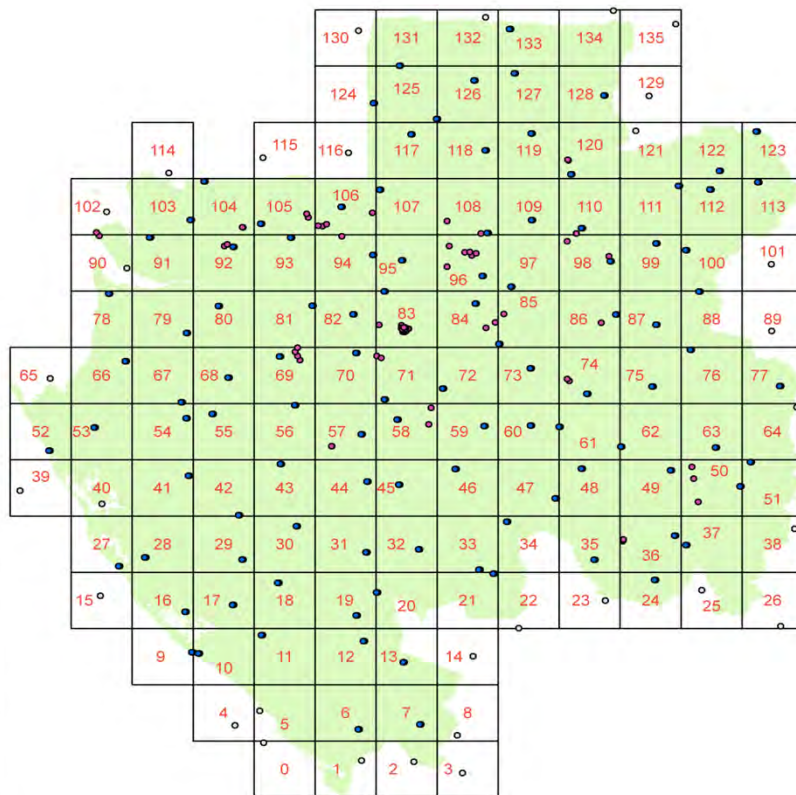


Public policies: LULUCF

NATIONAL INVENTORY OF NATURAL RESOURCES

Creating a national network of plots for forest monitoring in time

100 1-ha plots already established with a goal of 400 to 600 plots



Gabon National Carbon Assessment

Above Ground Biomass

Legend

Above Ground Biomass (Mg/ha)

- 26.54 - 99.92
- 99.92 - 173.30
- 173.30 - 246.68
- 246.68 - 320.06
- 320.06 - 393.44
- 393.44 - 466.82
- 466.82 - 540.20
- 540.20 - 613.58
- Plot in Progress

Routes

- R1
- R2
- Protected Areas
- Buffer Zones

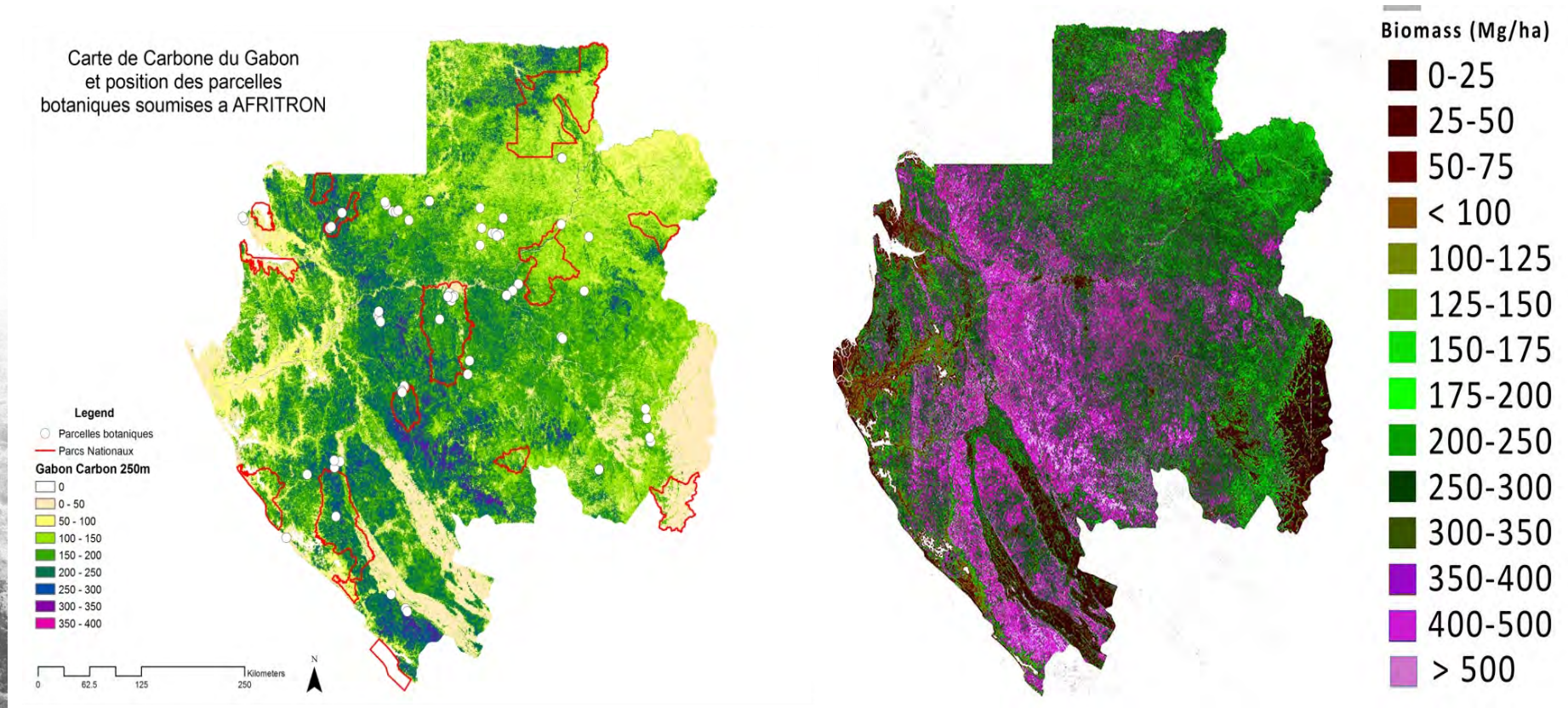


RÉPUBLIQUE GABONAISE
Conseil National Climat



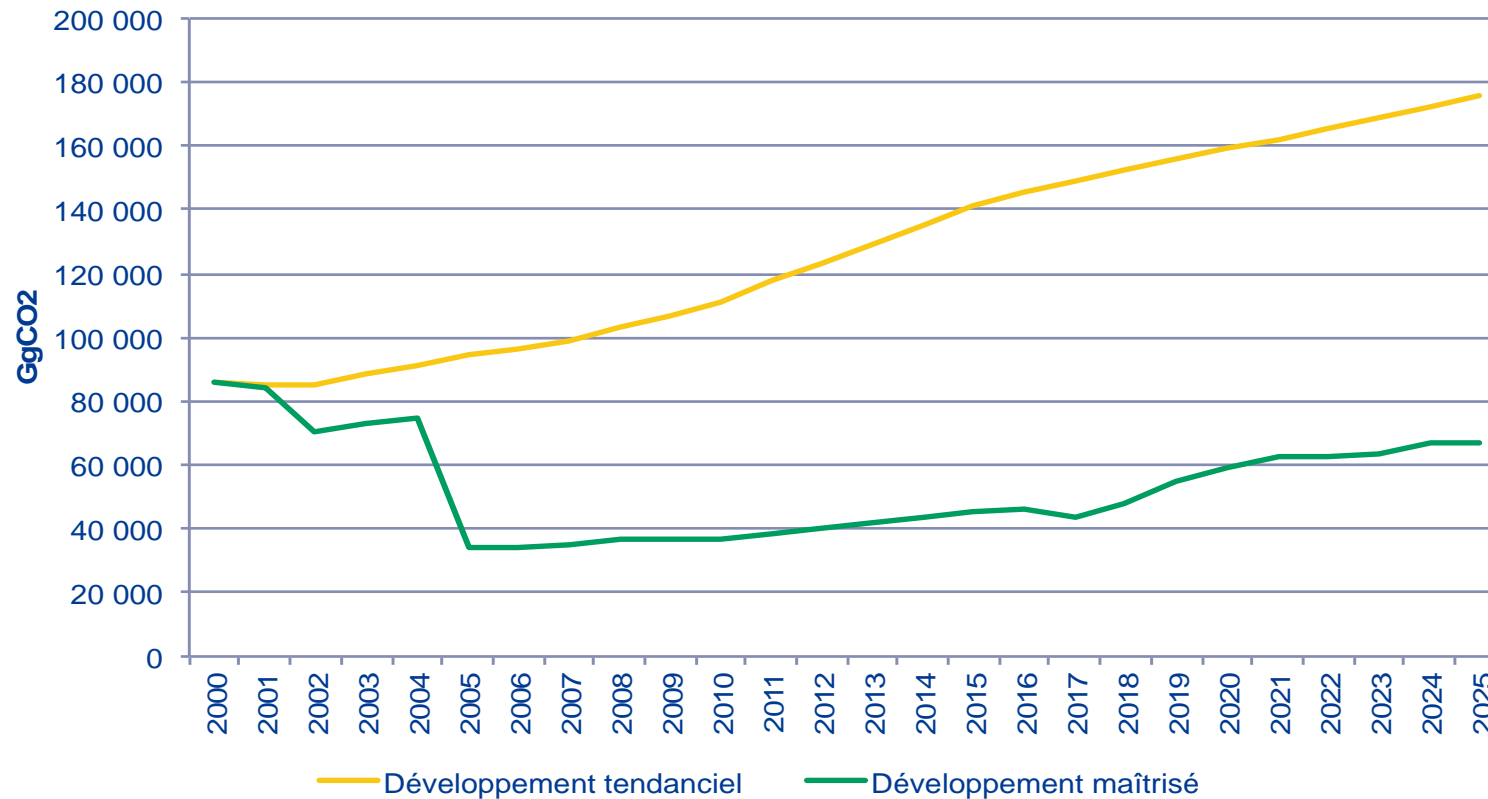
Public policies: LULUCF

NATIONAL INVENTORY OF NATURAL RESOURCES

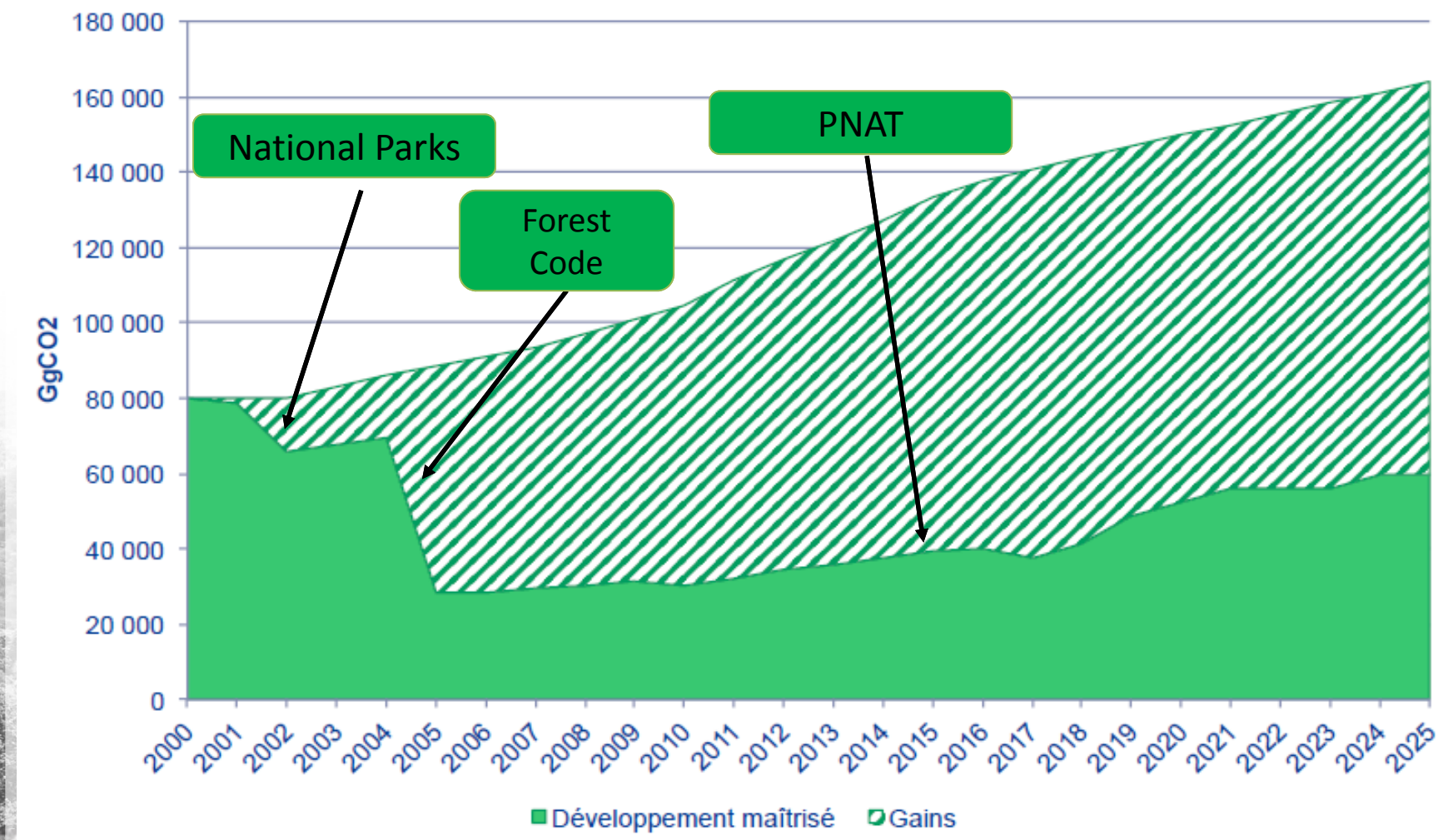


The philosophy of Gabon's commitments

Taken together, the commitments of Gabon should reduce GHG emissions by more than 330,000 GgCO₂ on 2010-2025, or 52% compared to the baseline scenario (58% in 2025)



The Content : LULUCF



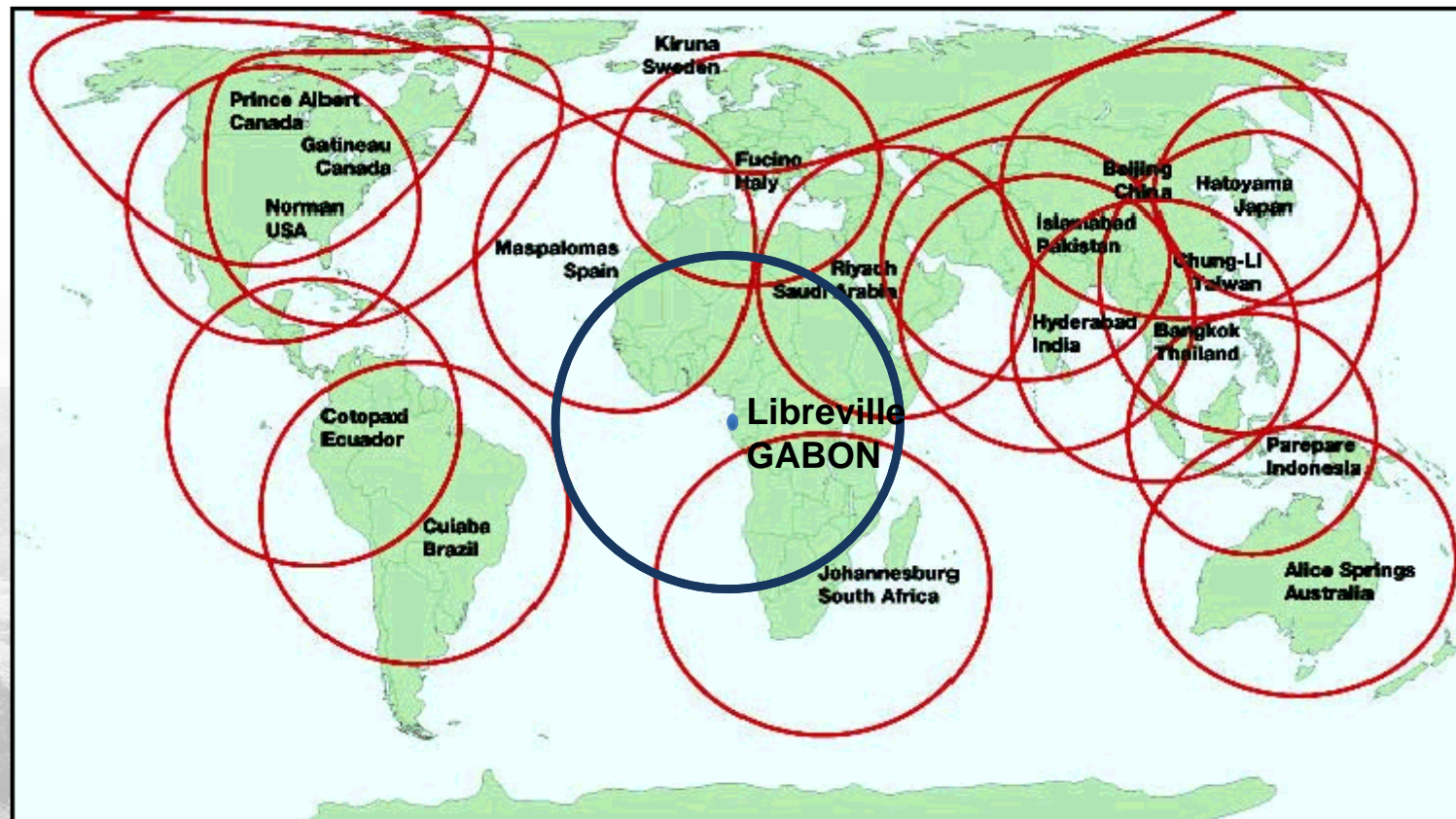
PUBLIC POLICIES :
LAND USE AND LAND USE CHANGE:
*2- Land Gabonese Agency for Space Studies
and Observations (AGEOS)*



Public policies: LULUCF

Gabonese Agency for Space Studies and Observations

Distribution of observation stations around the world



Public policies: LULUCF

Gabonese Agency for Space Studies and Observations

Direct Receiving Station

3 composantes principales

- Antenne de réception directe

- X band (8-8.4 GHz),
- Multi mission et multi capteurs : Optique & Radar,
- G/T=33,8; Diamètre de 7.30 m,
- 5° EL, Cercle de réception de 2800 km.

- Centre de Compétence

- Services administratifs,
- Services techniques (réception et traitement),
- Recherche & Formation.

- Infrastructure de distribution des données

- GEOportail (Outil Catalogue)
- www.ageos.ga (3037 images L7&8, 109 SPOT4 & 5)

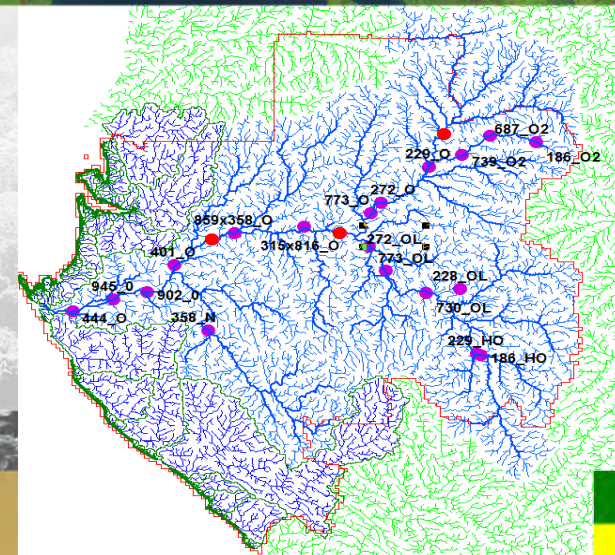


Public policies: LULUCF

Gabonese Agency for Space Studies and Observations

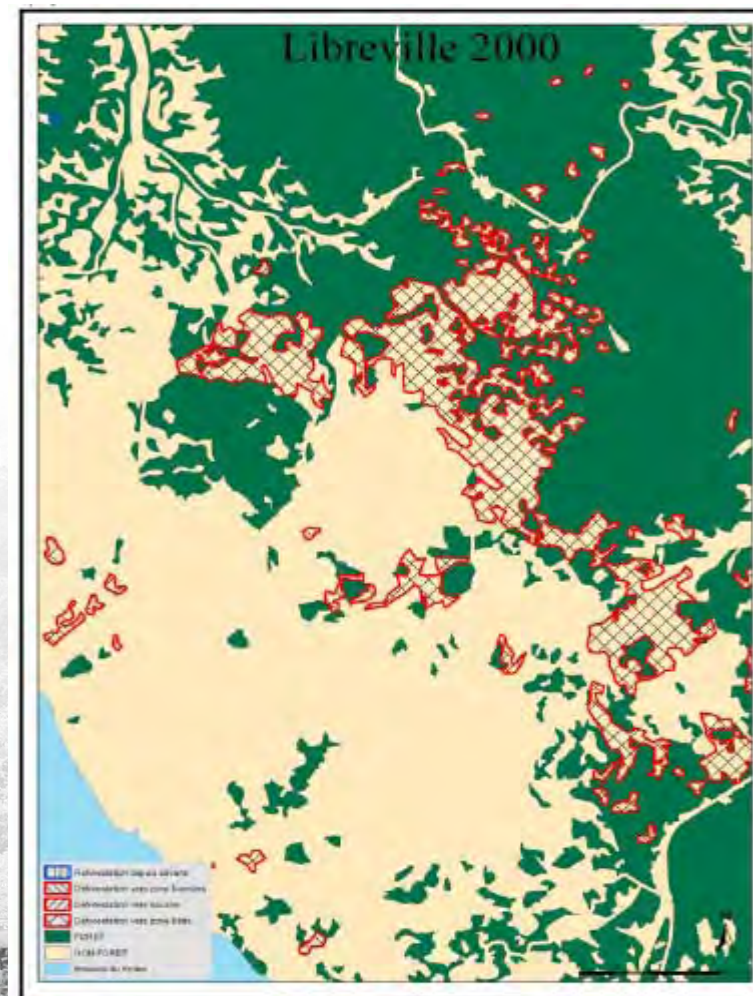
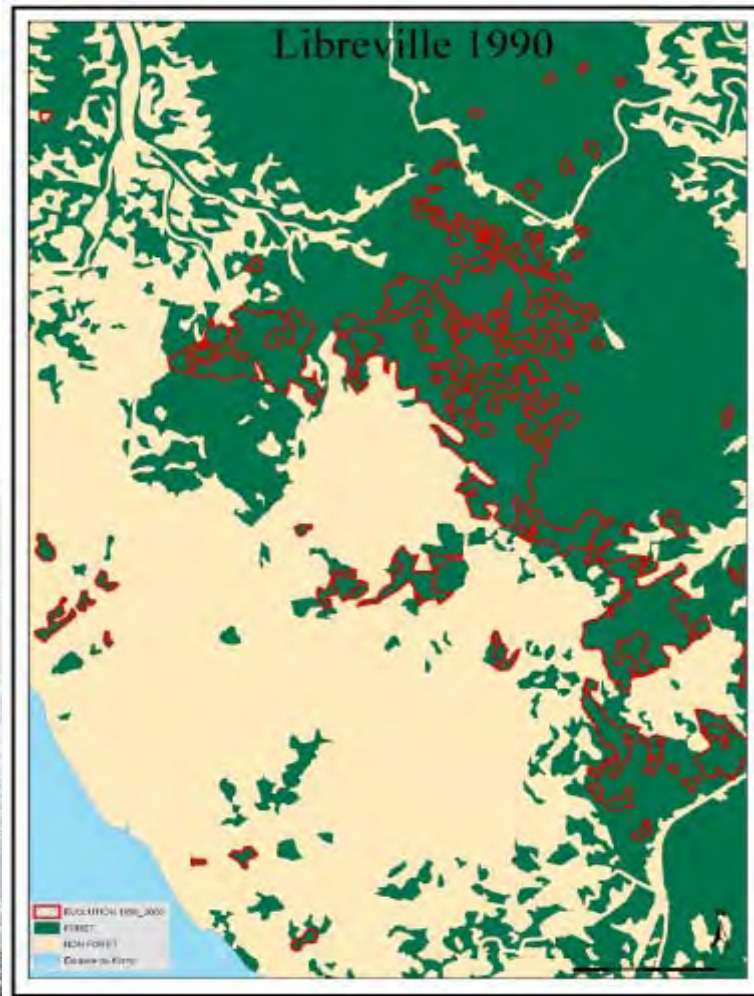
Main applications

- Forests
- Water resources
- Coastal environment
- Urban environment
- Update mapping
- Maritime surveillance



Public policies: LULUCF

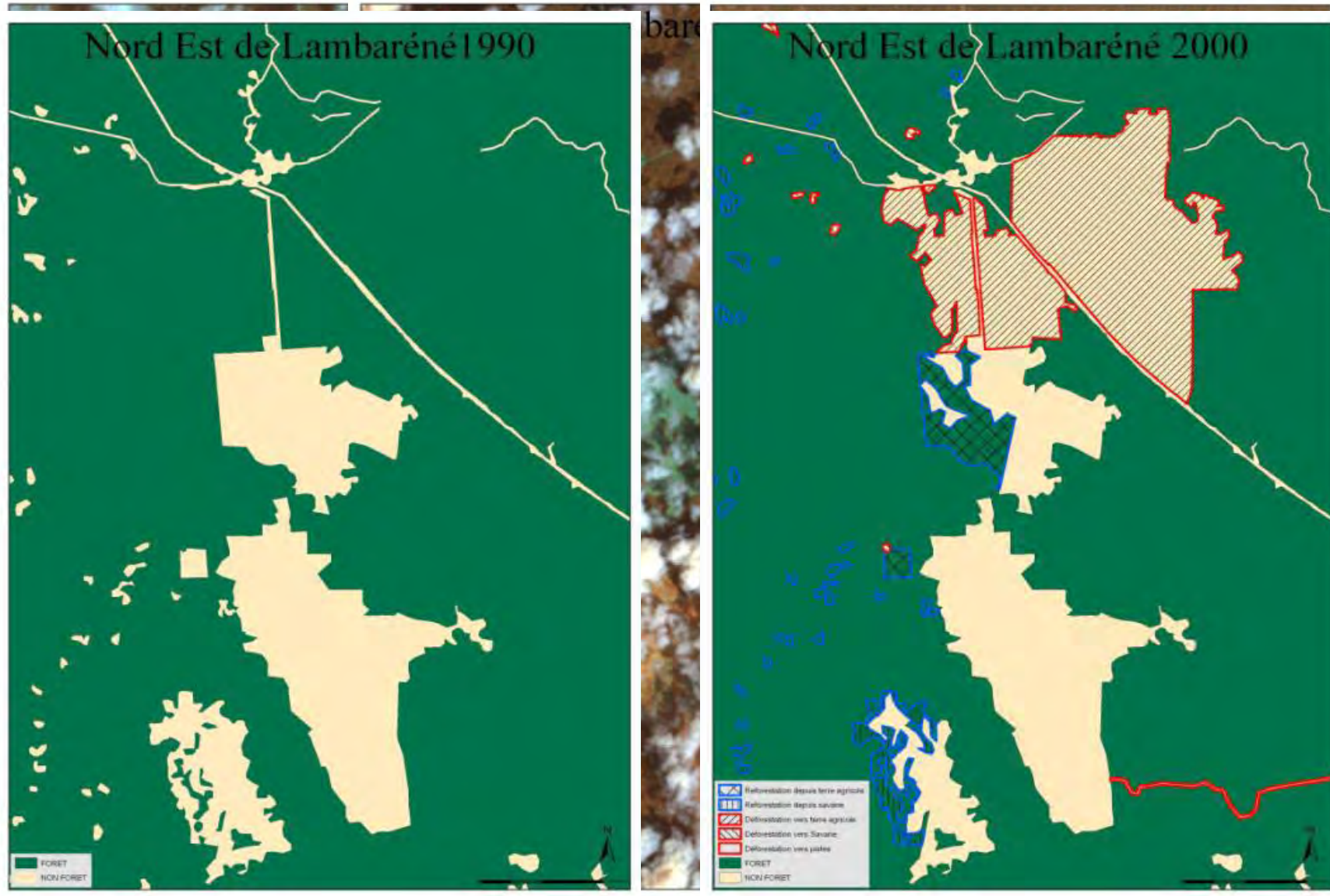
Gabonese Agency for Space Studies and Observations



Public policies: LULUCF

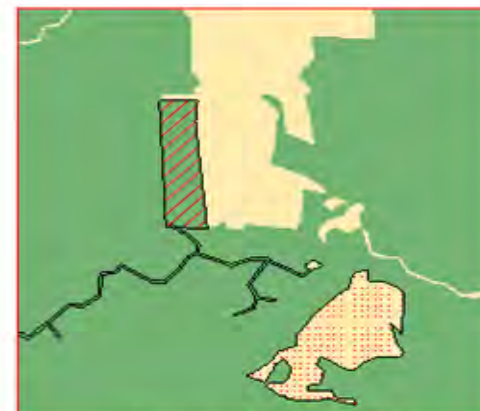
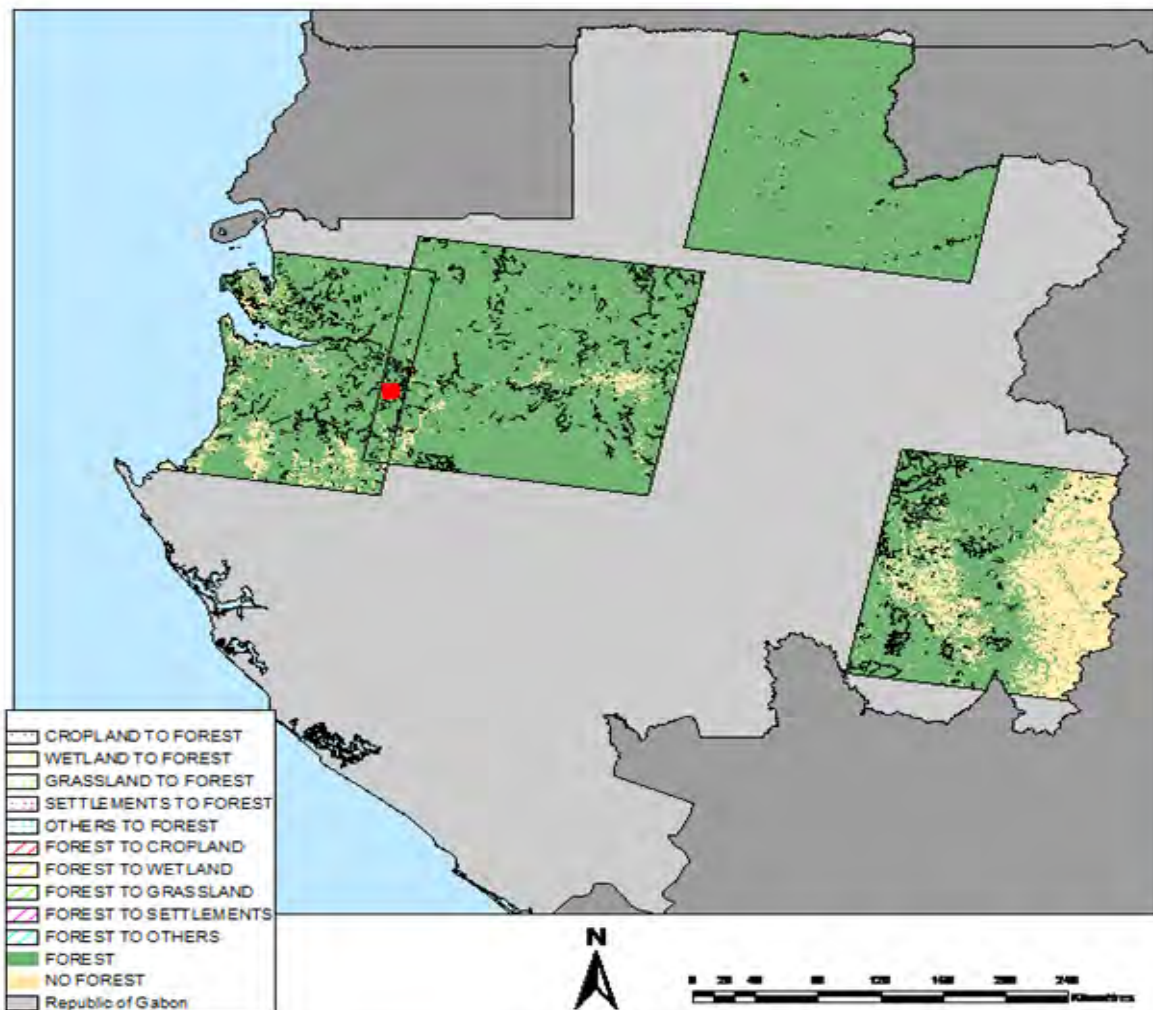
Gabonese Agency for Space Studies and Observations

eg. of results: North of Lambaréné

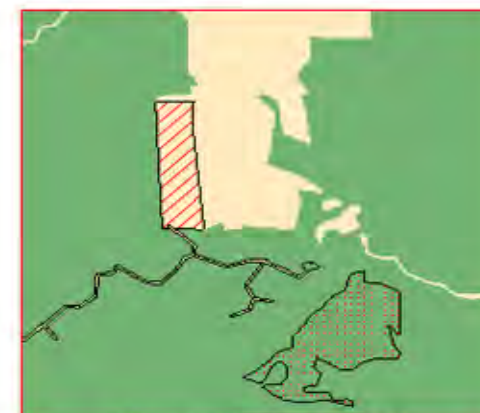


Evolution du Couvert Forestier 1990-2000

Phase 1 – République du Gabon



Couvert forestier 1990
Evolutions de 1990-2000

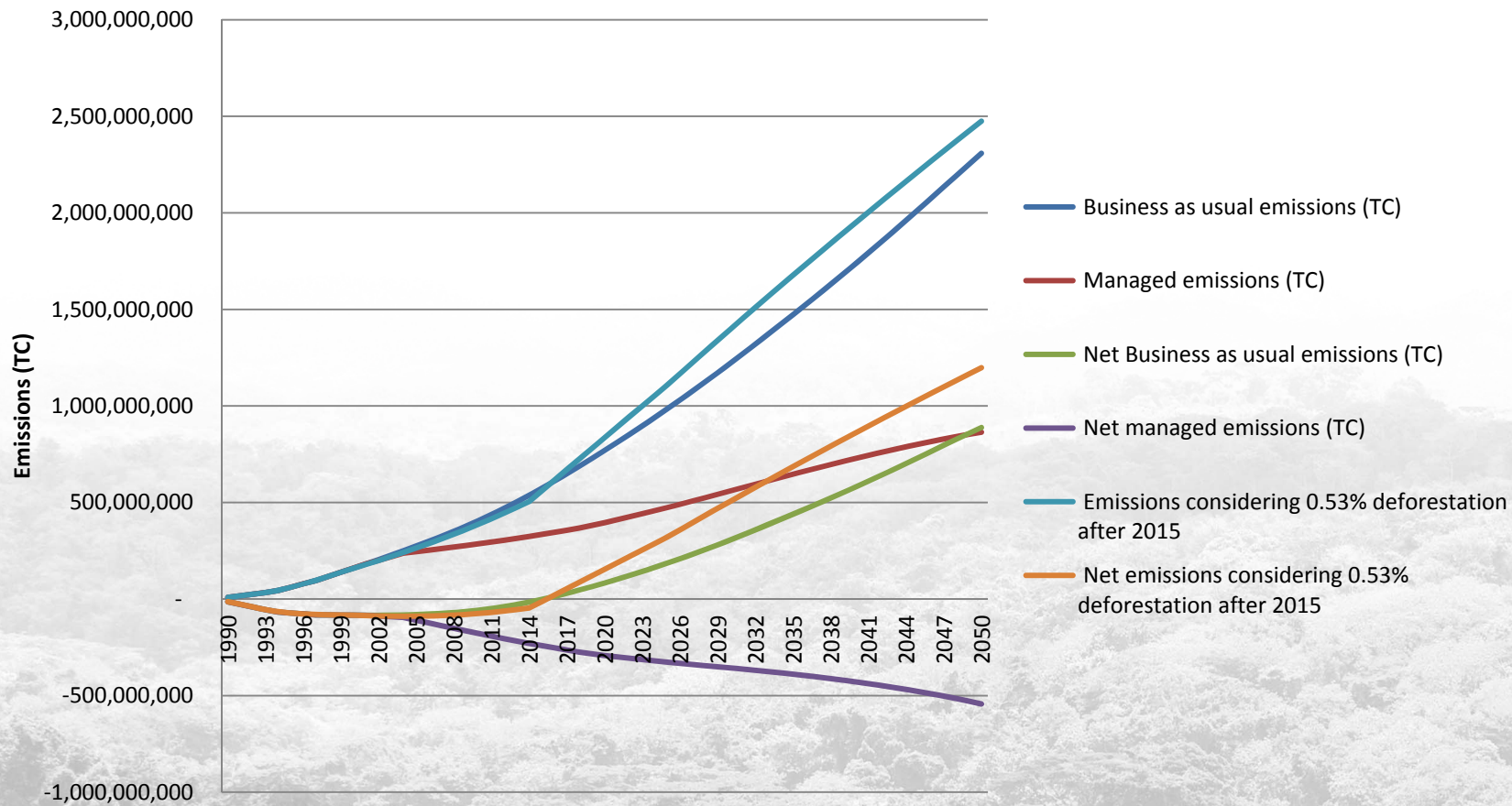


Couvert forestier 2000
Evolutions de 1990-2000



The Content : LULUCF

Comparing business as usual, global average deforestation rates and managed emissions to 2050



**THANK YOU TO USA/LEDS PROGRAM
AND FRANCE/AFD FOR SUPPORT**

THANK YOU FOR YOUR ATTENTION



RÉPUBLIQUE GABONAISE
Conseil National Climat

