

Annex I

Messaging Service Specifications

1. Introduction

This annex provides information on the required XML message structures. Messages are passed in the registry system using the SOAP 1.1 protocol defined by the W3C SOAP1.1, using the RPC/Encoded style.

2. SOAP Message Exchange

SOAP is a lightweight protocol for exchange of information in a decentralized, distributed environment. It is an XML-based protocol that consists of three parts:

- An envelope that defines a framework for describing what is in a message and how to process it;
- A set of encoding rules for validation of defined elements;
- A convention for representing remote procedure calls and responses.

Requests (and responses) in the registry system are SOAP messages. Every SOAP message referred to in these specifications has a mandatory envelope and body element. The body contains the actual message to be delivered and processed.

3. Standards and Requirements

Due to the fact that the exchanges in the registry system will connect heterogeneous systems, the exchange of data must follow a common representation. Annex K (WSDL) describes the message structure and format of every message exchanged in the registry system. Any deviation from these named conventions shall result in the message being rejected.

3.1 Versioning

All messages shall comply with and be backward compatible with SOAP 1.1. The version of a SOAP message can be determined by the namespace defined for the SOAP message in the envelope. All SOAP messages will be transported by the HTTP1.1 protocol.

3.2 Encoding Styles

An encoding style is a set of rules that define exactly how data types are to be encoded into a common XML syntax. The SOAP1.1 messages in the registry system are defined using the RPC/Encoded encoding style, in order to guarantee the largest compatibility possible with existing tools and SOAP processors.

3.3 SOAP Interoperability

Although any implementation of SOAP must be designed to be platform- and language-independent, there are known interoperability problems between the different SOAP implementations. The WSDLs and SOAP messages submitted by the registries shall comply as much as possible with the Web Services Interoperability Organization (WS-I), Basic Profile 1.0a. This profile clarifies the grey areas of SOAP that are the root cause of interoperability problems. The WSDLs defined in Annex K are known to be compliant with the Web Service Interoperability Organization for all aspects of their definition.

55 **3.4 SOAP-Specific Port**

56
57 It is recommended that SOAP messages in the registry system use TCP well-known port 80 for
58 HTTP and 443 for HTTPS. See RFC 1700. Because of its applicative nature, SOAP usage must
59 be restricted to known hosts in the registry system and network administrators should take all
60 necessary measures to allow incoming HTTP and HTTPS requests only from recognized hosts.
61 Additionally, only outgoing HTTP and HTTPS requests to recognized hosts should be authorized.
62

63 **4. SOAP Message Specifications**

64
65 **4.1 SOAP Envelope Element**

66
67 SOAP messages are well-formed XML documents, the envelope must start with an envelope
68 declaration which contains namespace declarations. The envelope element must be prefixed with
69 an indicator of the namespace that defines the SOAP version that is applicable. The version is
70 indicated by the namespace attribute, xmlns, included in the envelope element start tag. The
71 namespace prefix could be any valid XML namespace string, but the convention usually adopted
72 is as follows:

73
74 `<SOAP-ENV:Envelope xmlns:SOAP-ENV="http://schemas.xmlsoap.org/soap/envelope/">`

75
76 The namespace name SOAP-ENV is a symbol for <http://schema.xmlsoap.org/soap/envelope>.
77 Although it may be referred to by any name, the URL part must be exactly as specified.
78

79 **4.2 The Header Element**

80
81 The Header element offers a framework for specifying additional application-level requirements.
82 Due to various interpretations and incomplete support by SOAP processors and their WSDL
83 compiling tools of the header information in SOAP messages, the registry system will not make
84 use of the SOAP header functionality. Rather, information common to all messages will be
85 embedded in the body of the messages.
86

87 **4.3 The Body Element**

88
89 The Body element is mandatory for all SOAP messages and contains information regarding the
90 specific message being sent. Annex K defines the structure and layout of the messages.
91

92 **4.3.1 Namespaces**

93
94 The primary use of namespaces in XML documents is to enable identification of logical structures
95 in documents by software modules such as query processors, stylesheet-driven rendering engines
96 and schema-driven validators. Separate namespaces shall be used to distinguish elements that
97 are associated with all types from those associated with operations. The following namespaces
98 have been defined for the registry system:
99

- 100
- "urn:KyotoProtocol:RegistrySystem:ITL:1.0:0.0", the target namespace for all operations.
 - "urn:KyotoProtocol:RegistrySystem:ITL:Types:1.0:0.0", the type namespace for all ITL-recognized elements and attributes.
- 101
102

103
104 Registries will use operations defined in the ITL namespaces (i.e. ITL for operations and
105 ITL:Types for the data types).
106

107 **5. WSDL Requirements**

108
109 Web Services Description Language (WSDL) is a specification defining how a Web service is
110 described in a common XML grammar. It represents a contact between the service requestor and
111 service provider which is platform and language independent. The WSDLs defined in Annex K will
112 be made available from the ITL public website.

[This page intentionally left blank.]

1 **Annex K**
2 **Description Language (WSDL) Documentation**
3
4

5 **1. Introduction**
6

7 This annex contains the WSDL documents for data exchange for the Kyoto Protocol. The
8 documents listed below specify how registries can communicate with the ITL and vice versa.
9 These documents define the interfaces to the public web service methods on both the ITL and
10 registries. These web service methods are the portals through which data can be passed into an
11 application.
12

13 There are four WSDL documents listed below: Common, Registry, Transaction Log, and Account
14 Management. The Common WSDL describes the data types and messages used by the Registry
15 and Transaction Log WSDLs. The Registry WSDL describes the operations and the bindings that
16 registries must support. The Registry WSDL imports the types and messages in the Common
17 WSDL. The Transaction Log WSDL describes the operations and the bindings that the ITL will
18 support. The Transaction Log WSDL also imports the types and messages in the Common
19 WSDL. The Account Management WSDL describes the operations for managing account activity
20 and is specific to ~~STLCITL~~ transactions only.
21

22 In order to aid the understanding of non-technical persons, a summary of each operation is
23 provided prior to the WSDL documents. WSDL documents are designed to be “read” by
24 computers and not humans. The Web Service Method Summaries below reduce the numerous
25 cross-references and repetitive nature of the WSDL documents to a more understandable form.
26 The summaries are still detailed and reflect the complex nature of the data exchange system. The
27 Account Management Web Service Operations are found separately, in Section 6.
28

29 **2. Summaries of Web Service Operations**
30

31 **2.1 AcceptMessage**
32

33 **Figure K1: AcceptMessage**
34 **Role(s): Registry and ITL**
35

MessageRequest

from	string
to	string
majorVersion	int
minorVersion	int
messageContent	string
messageDateTime	dateTime

MessageResponse

resultIdentifier	int
responseCodes	ArrayOfInt Opt

36
37

38 **2.2 AcceptNotification**

39
40
41
42

**Figure K2: AcceptNotification
Role(s): Registry and ITL**

NotificationRequest

from	string		
to	string		
majorVersion	int		
minorVersion	int		
transactionIdentifier	string		
transactionStatus	int		
partyType	int		
evaluationResult	ArrayOfEvaluationResult		
	responseCode	int	
	unitBlockIdentifiers	ArrayOfUnitBlockIdentifier	Opt
		unitSerialBlockStart	long
		unitSerialBlockEnd	long
		originatingPartyCode originatingRegistryCode	string

NotificationResponse

resultIdentifier	int		
responseCodes	ArrayOfInt		Opt

43

44

45 **2.3 AcceptITLNotice**

46

47

48

49

**Figure K3: AcceptITLNotice
Role(s): Registry**

ITLNoticeRequest

from	string		
to	string		
majorVersion	int		
minorVersion	int		
messageContent	string		
messageDate	dateTime		
notificationType	int		
notificationIdentifier	long		
notificationStatus	int		
projectNumberIdentifier	string		Opt
unitType	int		Opt
targetValue	long		Opt
actionDueDate	date		Opt
unitBlockIdentifiers	ArrayOfReconciliationUnitBlockIdentifier		
		unitSerialBlockStart	long
		unitSerialBlockEnd	long
		originatingPartyCode originatingRegistryCode	string

ITLNoticeResponse

resultIdentifier	int		
responseCodes	ArrayOfInt		Opt

50

51 **2.4 AcceptProposal**

52

53

Figure K4: AcceptProposal

54

Role(s): Registry and ITL

55

ProposalRequest

from	string		
to	string		
majorVersion	int		
minorVersion	int		
proposedTransaction	ProposalTransaction		
	transactionIdentifier	string	
	transactionType	int	
	suppTransactionType	Int	Opt
	transferringRegistryCode	string	
	transferringRegistryAccountType	int	Opt
	transferringRegistryAccountIdentifier	long	Opt
	acquiringRegistryCode	string	
	acquiringRegistryAccountType	int	Opt
	acquiringRegistryAccountIdentifier	long	Opt
	notificationIdentifier	long	Opt
	proposalUnitBlocks	ArrayOfTransactionUnitBlock	
		unitSerialBlockStart	long
		unitSerialBlockEnd	long
		originatingPartyCode originatingRegistryCode	string
		unitType	int
		suppUnitType	int Opt
		originalCommitPeriod	int
		applicableCommitPeriod	int
		LULUCFActivity	int Opt
		projectIdIdentifier	int Opt
		track	int Opt
		blockRole	string Opt
		acquiringRegistryAccountType	int Opt
		acquiringRegistryAccountIdentifier	long Opt
		transferringRegistryAccountType	int Opt
		transferringRegistryAccountIdentifier	long Opt
		yearInCommitmentPeriod	int Opt
		installationIdentifier	long Opt
		expiryDate	date Opt

ProposalResponse

resultIdentifier	int		
responseCodes	ArrayOfint		Opt

56

57 **2.5 ProvideTime**

58
59
60
61

**Figure K5: ProvideTime
Role(s): Registry**

ProvideTimeRequest

from	string
to	string
majorVersion	int
minorVersion	int
ITLSystemTime	dateTime

ProvideTimeResponse

systemTime	dateTime
resultIdentifier	int
responseCodes	ArrayOfInt Opt

62
63
64
65
66
67
68

2.6 InitiateReconciliation

**Figure K6: InitiateReconciliation
Role(s): Registry**

InitiateReconciliationRequest

from	string
to	string
majorVersion	int
minorVersion	int
reconciliationIdentifier	string
snapshotDatetime	datetime

InitiateReconciliationResponse

resultIdentifier	int
responseCodes	ArrayOfInt Opt

69
70
71
72
73
74

2.6.7 ReceiveReconciliationResult

**Figure K6K7: ReceiveReconciliationResult
Role(s): Registry, ITL**

ReconciliationResultRequest

from	string
to	string
majorVersion	int
minorVersion	int
reconciliationIdentifier	string
reconciliationStatus	int
responseCodes	ArrayOfInt Opt

ReconciliationResultResponse

resultIdentifier	int
responseCodes	ArrayOfInt Opt

75

76 | **2.78** ProvideAuditTrail

77
78
79
80

Figure K87: ProvideAuditTrail
Role(s): Registry, ITL

ProvideAuditTrailRequest

from	string	
to	string	
majorVersion	int	
minorVersion	int	
reconciliationIdentifier	string	
auditTrailBeginDatetime	dateTime	
auditTrailEndDatetime	dateTime	
accountType	int	Opt
accountIdentifier	long	Opt
accountCommitPeriod	int	Opt
unitType	int	Opt
suppUnitType	int	Opt
unitBlockIdentifiers	ArrayOfReconciliationUnitBlockIdentifier	Opt
	unitSerialBlockStart	long
	unitSerialBlockEnd	long
	originatingPartyCode	string
	originatingRegistryCode	string
responseCodes	ArrayOfInt	Opt

ProvideAuditTrailResponse

resultIdentifier	int	
responseCodes	ArrayOfInt	Opt

81
82
83 | **2.89** ProvideTotals
84
85
86
87

Figure K8K9: ProvideTotals
Role(s): Registry, ITL

ProvideTotalsRequest

from	string	
to	string	
majorVersion	int	
minorVersion	int	
reconciliationIdentifier	string	
reconciliationSnapshotDatetime	dateTime	
reconciliationStatus	int	
unitType	int	Opt
suppUnitType	int	Opt
accountCommitPeriod	int	Opt
accountType	int	Opt
byAccountFlag	int	Opt
responseCodes	ArrayOfInt	Opt

ProvideTotalsResponse

resultIdentifier	int	
responseCodes	ArrayOfInt	Opt

88

89 | **2.910** ProvideUnitBlocks

90

91 |

92

93

Figure K9K10: ProvideUnitBlocks
Role(s): Registry

ProvideUnitBlocksRequest

from	string		
to	string		
majorVersion	int		
minorVersion	int		
reconciliationIdentifier	string		
reconciliationSnapshotDatetime	dateTime		
unitBlockRequests	ArrayOfUnitBlockRequest		
	unitType	int	Opt
	suppUnitType	int	Opt
	accountCommitPeriod	int	Opt
	accountType	int	Opt
	accountIdentifier	long	Opt
responseCodes	ArrayOfInt		Opt

ProvideUnitBlocksResponse

resultIdentifier	int		
responseCodes	ArrayOfInt		Opt

94

95

96 | **2.1011** GetTransactionStatus

97 |

98

99

100

Figure K110: GetTransactionStatus
Role(s): ITL

TransactionStatusRequest

from	string		
to	string		
majorVersion	int		
minorVersion	int		
transactionIdentifier	string		

TransactionStatusResponse

transactionIdentifier	string		
transactionStatus	int		
transactionStatusDate	dateTime		
resultIdentifier	int		
responseCodes	ArrayOfInt		Opt

101 | **2.4412** ReceiveTotals

102
103
104
105

Figure K44K12: ReceiveTotals
Role(s): ITL

ReceiveTotalsRequest

from	String		
to	string		
majorVersion	int		
minorVersion	int		
reconciliationIdentifier	string		
totals	ArrayOfTotal		
	accountType	int	
	accountIdentifier	long	Opt
	accountCommitPeriod	int	
	unitType	int	
	suppUnitType	int	Opt
	unitCount	long	

ReceiveTotalsResponse

resultIdentifier	int		
responseCodes	ArrayOfInt		Opt

106
107
108 | **2.4213** ReceiveUnitBlocks
109
110
111
112

Figure K42K13: ReceiveUnitBlocks
Role(s): ITL

ReceiveUnitBlocksRequest

from	string		
to	string		
majorVersion	int		
minorVersion	int		
reconciliationIdentifier	string		
unitBlocks	ArrayOfUnitBlock		
	unitSerialBlockStart	long	
	unitSerialBlockEnd	long	
	originatingPartyCode or originatingRegistryCode	string	
	unitType	int	
	suppUnitType	int	Opt
	accountType	int	
	accountIdentifier	long	Opt
	applicableCommitPeriod	int	

ReceiveUnitBlocksResponse

resultIdentifier	int		
responseCode	ArrayofInt		Opt

113
114

115 | **2.4314 ReceiveAuditTrail**

116
117
118
119

Figure K12K14: ReceiveAuditTrail
Role(s): ITL

ReceiveAuditTrailRequest

from	string		
to	string		
majorVersion	int		
minorVersion	int		
reconciliationIdentifier	string		
transactions	ArrayOfTransaction		
	transactionIdentifier	string	
	transactionType	int	
	suppTransactionType	int	Opt
	transactionStatusDateTime	dateTime	
	transferringRegistryCode	string	
	transferringRegistryAccountType	int	Opt
	transferringRegistryAccountIdentifier	long	Opt
	acquiringRegistryCode	string	
	acquiringRegistryAccountType	int	Opt
	acquiringRegistryAccountIdentifier	long	Opt
	notificationIdentifier	long	Opt
	transactionBlocks	ArrayOfReconciliationTransactionUnitBlock	
		unitSerialBlockStart	long
		unitSerialBlockEnd	long
		originatingPartyCode originatingRegistryCode	string
		unitType	int
		suppUnitType	int
		originalCommitPeriod	int
		applicableCommitPeriod	int
		LULUCFActivity	int
		projectIdentifier	int
		track	int
		blockRole	string
		transferringRegistryAccountType	int
		transferringRegistryAccountIdentifier	long
		acquiringRegistryAccountType	int
		acquiringRegistryAccountIdentifier	long
		yearinCommitmentPeriod	int
		installationIdentifier	long
		expiryDate	date

ReceiveAuditTrailResponse

resultIdentifier	int		
responseCodes	ArrayOfint		Opt

120

121 3. Registry WSDL

```
122
123 <?xml version="1.0" encoding="UTF-8"?>
124 <definitions name="RegistryService" targetNamespace="urn:KyotoProtocol:RegistrySystem:ITL:1.0:0.0"
125 xmlns:tns="urn:KyotoProtocol:RegistrySystem:ITL:1.0:0.0"
126 xmlns:typens="urn:KyotoProtocol:RegistrySystem:ITL:Types:1.0:0.0"
127 xmlns="http://schemas.xmlsoap.org/wsdl/" xmlns:soap="http://schemas.xmlsoap.org/wsdl/soap/">
128 <import namespace="urn:KyotoProtocol:RegistrySystem:ITL:Types:1.0:0.0"
129 location="common.wsdl"/>
130 <portType name="RegistryPort">
131 <operation name="provideTime">
132 <input message="typens:provideTimeRequest"/>
133 <output message="typens:provideTimeResponse"/>
134 </operation>
135 <operation name="acceptMessage">
136 <input message="typens:acceptMessageRequest"/>
137 <output message="typens:acceptMessageResponse"/>
138 </operation>
139 <operation name="acceptProposal">
140 <input message="typens:acceptProposalRequest"/>
141 <output message="typens:acceptProposalResponse"/>
142 </operation>
143 <operation name="acceptNotification">
144 <input message="typens:acceptNotificationRequest"/>
145 <output message="typens:acceptNotificationResponse"/>
146 </operation>
147 <operation name="acceptITLNotice">
148 <input message="typens:acceptITLNoticeRequest"/>
149 <output message="typens:acceptITLNoticeResponse"/>
150 </operation>
151 <operation name="initiateReconciliation">
152 <input message="typens:initiateReconciliationRequest"/>
153 <output message="typens:initiateReconciliationResponse"/>
154 </operation>
155 <operation name="receiveReconciliationResult">
156 <input message="typens:receiveReconciliationResultRequest"/>
157 <output message="typens:receiveReconciliationResultResponse"/>
158 </operation>
159 <operation name="provideAuditTrail">
160 <input message="typens:provideAuditTrailRequest"/>
161 <output message="typens:provideAuditTrailResponse"/>
162 </operation>
163 <operation name="provideTotals">
164 <input message="typens:provideTotalsRequest"/>
165 <output message="typens:provideTotalsResponse"/>
166 </operation>
167 <operation name="provideUnitBlocks">
168 <input message="typens:provideUnitBlocksRequest"/>
169 <output message="typens:provideUnitBlocksResponse"/>
170 </operation>
171 </portType>
172 <binding name="RegistryBinding" type="tns:RegistryPort">
173 <soap:binding transport="http://schemas.xmlsoap.org/soap/http" style="rpc"/>
174 <operation name="provideTime">
175 <soap:operation soapAction="provideTime" style="rpc"/>
176 <input>
177 <soap:body use="encoded"
178 encodingStyle="http://schemas.xmlsoap.org/soap/encoding/"
179 namespace="urn:KyotoProtocol:RegistrySystem:ITL:1.0:0.0"/>
180 </input>
181 <output>
182 <soap:body use="encoded"
183 encodingStyle="http://schemas.xmlsoap.org/soap/encoding/"
184 namespace="urn:KyotoProtocol:RegistrySystem:ITL:1.0:0.0"/>
185 </output>
186 </operation>
187 <operation name="acceptMessage">
188 <soap:operation soapAction="acceptMessage" style="rpc"/>
189 <input>
190 <soap:body use="encoded"
191 encodingStyle="http://schemas.xmlsoap.org/soap/encoding/"
192 namespace="urn:KyotoProtocol:RegistrySystem:ITL:1.0:0.0"/>
```

```

193         </input>
194     </output>
195         <soap:body use="encoded"
196             encodingStyle="http://schemas.xmlsoap.org/soap/encoding/"
197             namespace="urn:KyotoProtocol:RegistrySystem:ITL:1.0:0.0"/>
198     </output>
199 </operation>
200 <operation name="acceptProposal">
201     <soap:operation soapAction="acceptProposal" style="rpc"/>
202     <input>
203         <soap:body use="encoded"
204             encodingStyle="http://schemas.xmlsoap.org/soap/encoding/"
205             namespace="urn:KyotoProtocol:RegistrySystem:ITL:1.0:0.0"/>
206     </input>
207     <output>
208         <soap:body use="encoded"
209             encodingStyle="http://schemas.xmlsoap.org/soap/encoding/"
210             namespace="urn:KyotoProtocol:RegistrySystem:ITL:1.0:0.0"/>
211     </output>
212 </operation>
213 <operation name="acceptNotification">
214     <soap:operation soapAction="acceptNotification" style="rpc"/>
215     <input>
216         <soap:body use="encoded"
217             encodingStyle="http://schemas.xmlsoap.org/soap/encoding/"
218             namespace="urn:KyotoProtocol:RegistrySystem:ITL:1.0:0.0"/>
219     </input>
220     <output>
221         <soap:body use="encoded"
222             encodingStyle="http://schemas.xmlsoap.org/soap/encoding/"
223             namespace="urn:KyotoProtocol:RegistrySystem:ITL:1.0:0.0"/>
224     </output>
225 </operation>
226 <operation name="acceptITLNotice">
227     <soap:operation soapAction="acceptITLNotice" style="rpc"/>
228     <input>
229         <soap:body use="encoded"
230             encodingStyle="http://schemas.xmlsoap.org/soap/encoding/"
231             namespace="urn:KyotoProtocol:RegistrySystem:ITL:1.0:0.0"/>
232     </input>
233     <output>
234         <soap:body use="encoded"
235             encodingStyle="http://schemas.xmlsoap.org/soap/encoding/"
236             namespace="urn:KyotoProtocol:RegistrySystem:ITL:1.0:0.0"/>
237     </output>
238 </operation>
239 <operation name="initiateReconciliation">
240     <soap:operation soapAction="initiateReconciliation" style="rpc"/>
241     <input>
242         <soap:body use="encoded"
243             encodingStyle="http://schemas.xmlsoap.org/soap/encoding/"
244             namespace="urn:KyotoProtocol:RegistrySystem:ITL:1.0:0.0"/>
245     </input>
246     <output>
247         <soap:body use="encoded"
248             encodingStyle="http://schemas.xmlsoap.org/soap/encoding/"
249             namespace="urn:KyotoProtocol:RegistrySystem:ITL:1.0:0.0"/>
250     </output>
251 </operation>
252 <operation name="receiveReconciliationResult">
253     <soap:operation soapAction="receiveReconciliationResult" style="rpc"/>
254     <input>
255         <soap:body use="encoded"
256             encodingStyle="http://schemas.xmlsoap.org/soap/encoding/"
257             namespace="urn:KyotoProtocol:RegistrySystem:ITL:1.0:0.0"/>
258     </input>
259     <output>
260         <soap:body use="encoded"
261             encodingStyle="http://schemas.xmlsoap.org/soap/encoding/"
262             namespace="urn:KyotoProtocol:RegistrySystem:ITL:1.0:0.0"/>
263     </output>
264 </operation>
265 </operation>

```

```

266     <operation name="provideAuditTrail">
267         <soap:operation soapAction="provideAuditTrail" style="rpc"/>
268         <input>
269             <soap:body use="encoded"
270                 encodingStyle="http://schemas.xmlsoap.org/soap/encoding/"
271                 namespace="urn:KyotoProtocol:RegistrySystem:ITL:1.0:0.0"/>
272         </input>
273         <output>
274             <soap:body use="encoded"
275                 encodingStyle="http://schemas.xmlsoap.org/soap/encoding/"
276                 namespace="urn:KyotoProtocol:RegistrySystem:ITL:1.0:0.0"/>
277         </output>
278     </operation>
279     <operation name="provideTotals">
280         <soap:operation soapAction="provideTotals" style="rpc"/>
281         <input>
282             <soap:body use="encoded"
283                 encodingStyle="http://schemas.xmlsoap.org/soap/encoding/"
284                 namespace="urn:KyotoProtocol:RegistrySystem:ITL:1.0:0.0"/>
285         </input>
286         <output>
287             <soap:body use="encoded"
288                 encodingStyle="http://schemas.xmlsoap.org/soap/encoding/"
289                 namespace="urn:KyotoProtocol:RegistrySystem:ITL:1.0:0.0"/>
290         </output>
291     </operation>
292     <operation name="provideUnitBlocks">
293         <soap:operation soapAction="provideUnitBlocks" style="rpc"/>
294         <input>
295             <soap:body use="encoded"
296                 encodingStyle="http://schemas.xmlsoap.org/soap/encoding/"
297                 namespace="urn:KyotoProtocol:RegistrySystem:ITL:1.0:0.0"/>
298         </input>
299         <output>
300             <soap:body use="encoded"
301                 encodingStyle="http://schemas.xmlsoap.org/soap/encoding/"
302                 namespace="urn:KyotoProtocol:RegistrySystem:ITL:1.0:0.0"/>
303         </output>
304     </operation>
305 </binding>
306 <service name="RegistryService">
307     <port name="RegistryPort" binding="tns:RegistryBinding">
308         <soap:address location="http://REPLACE.WITH.ACTUAL.URL"/>
309     </port>
310 </service>
311 </definitions>
312

```

313 4. Transaction Log WSDL

```
314 <?xml version="1.0" encoding="UTF-8"?>
315 <definitions name="TransactionLogService"
316   targetNamespace="urn:KyotoProtocol:RegistrySystem:ITL:1.0:0.0"
317   xmlns:tns="urn:KyotoProtocol:RegistrySystem:ITL:1.0:0.0"
318   xmlns:typens="urn:KyotoProtocol:RegistrySystem:ITL:Types:1.0:0.0"
319   xmlns="http://schemas.xmlsoap.org/wsdl/"
320   xmlns:soap="http://schemas.xmlsoap.org/wsdl/soap/">
321   <import namespace="urn:KyotoProtocol:RegistrySystem:ITL:Types:1.0:0.0"
322     location="common.wsdl"/>
323   <portType name="TransactionLogPort">
324     <operation name="acceptMessage">
325       <input message="typens:acceptMessageRequest"/>
326       <output message="typens:acceptMessageResponse"/>
327     </operation>
328     <operation name="acceptProposal">
329       <input message="typens:acceptProposalRequest"/>
330       <output message="typens:acceptProposalResponse"/>
331     </operation>
332     <operation name="acceptNotification">
333       <input message="typens:acceptNotificationRequest"/>
334       <output message="typens:acceptNotificationResponse"/>
335     </operation>
336     <operation name="getTransactionStatus">
337       <input message="typens:getTransactionStatusRequest"/>
338       <output message="typens:getTransactionStatusResponse"/>
339     </operation>
340     <operation name="receiveReconciliationResult">
341       <input message="typens:receiveReconciliationResultRequest"/>
342       <output message="typens:receiveReconciliationResultResponse"/>
343     </operation>
344     <operation name="provideAuditTrail">
345       <input message="typens:provideAuditTrailRequest"/>
346       <output message="typens:provideAuditTrailResponse"/>
347     </operation>
348     <operation name="provideTotals">
349       <input message="typens:provideTotalsRequest"/>
350       <output message="typens:provideTotalsResponse"/>
351     </operation>
352     <operation name="provideUnitBlocks">
353       <input message="typens:provideUnitBlocksRequest"/>
354       <output message="typens:provideUnitBlocksResponse"/>
355     </operation>
356     <operation name="receiveAuditTrail">
357       <input message="typens:receiveAuditTrailRequest"/>
358       <output message="typens:receiveAuditTrailResponse"/>
359     </operation>
360     <operation name="receiveTotals">
361       <input message="typens:receiveTotalsRequest"/>
362       <output message="typens:receiveTotalsResponse"/>
363     </operation>
364     <operation name="receiveUnitBlocks">
365       <input message="typens:receiveUnitBlocksRequest"/>
366       <output message="typens:receiveUnitBlocksResponse"/>
367     </operation>
368   </portType>
369   <binding name="TransactionLogBinding" type="tns:TransactionLogPort">
370     <soap:binding transport="http://schemas.xmlsoap.org/soap/http" style="rpc"/>
371     <operation name="acceptMessage">
372       <soap:operation soapAction="acceptMessage" style="rpc"/>
373       <input>
374         <soap:body use="encoded"
375           encodingStyle="http://schemas.xmlsoap.org/soap/encoding/"
376           namespace="urn:KyotoProtocol:RegistrySystem:ITL:1.0:0.0"/>
377       </input>
378       <output>
379         <soap:body use="encoded"
380           encodingStyle="http://schemas.xmlsoap.org/soap/encoding/"
381           namespace="urn:KyotoProtocol:RegistrySystem:ITL:1.0:0.0"/>
382       </output>
383     </operation>
384   </binding>

```



```

385 <operation name="acceptProposal">
386   <soap:operation soapAction="acceptProposal" style="rpc"/>
387   <input>
388     <soap:body use="encoded"
389       encodingStyle="http://schemas.xmlsoap.org/soap/encoding/"
390       namespace="urn:KyotoProtocol:RegistrySystem:ITL:1.0:0.0"/>
391   </input>
392   <output>
393     <soap:body use="encoded"
394       encodingStyle="http://schemas.xmlsoap.org/soap/encoding/"
395       namespace="urn:KyotoProtocol:RegistrySystem:ITL:1.0:0.0"/>
396   </output>
397 </operation>
398 <operation name="acceptNotification">
399   <soap:operation soapAction="acceptNotification" style="rpc"/>
400   <input>
401     <soap:body use="encoded"
402       encodingStyle="http://schemas.xmlsoap.org/soap/encoding/"
403       namespace="urn:KyotoProtocol:RegistrySystem:ITL:1.0:0.0"/>
404   </input>
405   <output>
406     <soap:body use="encoded"
407       encodingStyle="http://schemas.xmlsoap.org/soap/encoding/"
408       namespace="urn:KyotoProtocol:RegistrySystem:ITL:1.0:0.0"/>
409   </output>
410 </operation>
411 <operation name="getTransactionStatus">
412   <soap:operation soapAction="getTransactionStatus" style="rpc"/>
413   <input>
414     <soap:body use="encoded"
415       encodingStyle="http://schemas.xmlsoap.org/soap/encoding/"
416       namespace="urn:KyotoProtocol:RegistrySystem:ITL:1.0:0.0"/>
417   </input>
418   <output>
419     <soap:body use="encoded"
420       encodingStyle="http://schemas.xmlsoap.org/soap/encoding/"
421       namespace="urn:KyotoProtocol:RegistrySystem:ITL:1.0:0.0"/>
422   </output>
423 </operation>
424 <operation name="receiveReconciliationResult">
425   <soap:operation soapAction="receiveReconciliationResult" style="rpc"/>
426   <input>
427     <soap:body use="encoded"
428       encodingStyle="http://schemas.xmlsoap.org/soap/encoding/"
429       namespace="urn:KyotoProtocol:RegistrySystem:ITL:1.0:0.0"/>
430   </input>
431   <output>
432     <soap:body use="encoded"
433       encodingStyle="http://schemas.xmlsoap.org/soap/encoding/"
434       namespace="urn:KyotoProtocol:RegistrySystem:ITL:1.0:0.0"/>
435   </output>
436 </operation>
437 <operation name="provideAuditTrail">
438   <soap:operation soapAction="provideAuditTrail" style="rpc"/>
439   <input>
440     <soap:body use="encoded"
441       encodingStyle="http://schemas.xmlsoap.org/soap/encoding/"
442       namespace="urn:KyotoProtocol:RegistrySystem:ITL:1.0:0.0"/>
443   </input>
444   <output>
445     <soap:body use="encoded"
446       encodingStyle="http://schemas.xmlsoap.org/soap/encoding/"
447       namespace="urn:KyotoProtocol:RegistrySystem:ITL:1.0:0.0"/>
448   </output>
449 </operation>
450 <operation name="provideTotals">
451   <soap:operation soapAction="provideTotals" style="rpc"/>
452   <input>
453     <soap:body use="encoded"
454       encodingStyle="http://schemas.xmlsoap.org/soap/encoding/"
455       namespace="urn:KyotoProtocol:RegistrySystem:ITL:1.0:0.0"/>
456   </input>
457   <output>

```

```

458         <soap:body use="encoded"
459           encodingStyle="http://schemas.xmlsoap.org/soap/encoding/"
460           namespace="urn:KyotoProtocol:RegistrySystem:ITL:1.0:0.0"/>
461       </output>
462   </operation>
463   <operation name="provideUnitBlocks">
464     <soap:operation soapAction="provideUnitBlocks" style="rpc"/>
465     <input>
466       <soap:body use="encoded"
467         encodingStyle="http://schemas.xmlsoap.org/soap/encoding/"
468         namespace="urn:KyotoProtocol:RegistrySystem:ITL:1.0:0.0"/>
469     </input>
470     <output>
471       <soap:body use="encoded"
472         encodingStyle="http://schemas.xmlsoap.org/soap/encoding/"
473         namespace="urn:KyotoProtocol:RegistrySystem:ITL:1.0:0.0"/>
474     </output>
475   </operation>
476   <operation name="receiveAuditTrail">
477     <soap:operation soapAction="receiveAuditTrail" style="rpc"/>
478     <input>
479       <soap:body use="encoded"
480         encodingStyle="http://schemas.xmlsoap.org/soap/encoding/"
481         namespace="urn:KyotoProtocol:RegistrySystem:ITL:1.0:0.0"/>
482     </input>
483     <output>
484       <soap:body use="encoded"
485         encodingStyle="http://schemas.xmlsoap.org/soap/encoding/"
486         namespace="urn:KyotoProtocol:RegistrySystem:ITL:1.0:0.0"/>
487     </output>
488   </operation>
489   <operation name="receiveTotals">
490     <soap:operation soapAction="receiveTotals" style="rpc"/>
491     <input>
492       <soap:body use="encoded"
493         encodingStyle="http://schemas.xmlsoap.org/soap/encoding/"
494         namespace="urn:KyotoProtocol:RegistrySystem:ITL:1.0:0.0"/>
495     </input>
496     <output>
497       <soap:body use="encoded"
498         encodingStyle="http://schemas.xmlsoap.org/soap/encoding/"
499         namespace="urn:KyotoProtocol:RegistrySystem:ITL:1.0:0.0"/>
500     </output>
501   </operation>
502   <operation name="receiveUnitBlocks">
503     <soap:operation soapAction="receiveUnitBlocks" style="rpc"/>
504     <input>
505       <soap:body use="encoded"
506         encodingStyle="http://schemas.xmlsoap.org/soap/encoding/"
507         namespace="urn:KyotoProtocol:RegistrySystem:ITL:1.0:0.0"/>
508     </input>
509     <output>
510       <soap:body use="encoded"
511         encodingStyle="http://schemas.xmlsoap.org/soap/encoding/"
512         namespace="urn:KyotoProtocol:RegistrySystem:ITL:1.0:0.0"/>
513     </output>
514   </operation>
515 </binding>
516 <service name="TransactionLogService">
517   <port name="TransactionLogPort" binding="tns:TransactionLogBinding">
518     <soap:address location="http://REPLACE.WITH.ACTUAL.URL"/>
519   </port>
520 </service>
521 </definitions>
522

```

5. Common WSDL

```

523 <?xml version="1.0" encoding="UTF-8"?>
524
525 <definitions name="RegistryService" xmlns:wSDL="http://schemas.xmlsoap.org/wSDL/"
526     xmlns:soapenc="http://schemas.xmlsoap.org/soap/encoding/"
527     xmlns:typens="urn:KyotoProtocol:RegistrySystem:ITL:Types:1.0:0.0"
528     targetNamespace="urn:KyotoProtocol:RegistrySystem:ITL:Types:1.0:0.0"
529     xmlns="http://schemas.xmlsoap.org/wSDL/">
530     <types>
531         <schema targetNamespace="urn:KyotoProtocol:RegistrySystem:ITL:Types:1.0:0.0"
532             xmlns="http://www.w3.org/2001/XMLSchema"
533             <import namespace="http://schemas.xmlsoap.org/soap/encoding/" />
534             <complexType name="ArrayOfInt">
535                 <complexContent>
536                     <restriction base="soapenc:Array">
537                         <attribute ref="soapenc:arrayType"
538                             wsdl:arrayType="int[]" />
539                     </restriction>
540                 </complexContent>
541             </complexType>
542             <complexType name="Transaction">
543                 <sequence>
544                     <element name="transactionIdentifier" type="string"/>
545                     <element name="transactionType" type="int"/>
546                     <element name="suppTransactionType" type="int"
547                         minOccurs="0"/>
548                     <element name="transactionStatusDateTime" type="dateTime"/>
549                     <element name="transferringRegistryCode" type="string"/>
550                     <element name="transferringRegistryAccountType" type="int"
551                         minOccurs="0"/>
552                     <element name="transferringRegistryAccountIdentifier"
553                         type="long" minOccurs="0"/>
554                     <element name="acquiringRegistryCode" type="string"/>
555                     <element name="acquiringRegistryAccountType" type="int"
556                         minOccurs="0"/>
557                     <element name="acquiringRegistryAccountIdentifier"
558                         type="long"
559                         minOccurs="0"/>
560                     <element name="notificationIdentifier" type="long"
561                         minOccurs="0"/>
562                     <element name="transactionBlocks"
563                         type="typens:ArrayOfReconciliationTransactionUnitBlock"/>
564                 </sequence>
565             </complexType>
566             <complexType name="ArrayOfTransaction">
567                 <complexContent>
568                     <restriction base="soapenc:Array">
569                         <attribute ref="soapenc:arrayType"
570                             wsdl:arrayType="typens:Transaction[]" />
571                     </restriction>
572                 </complexContent>
573             </complexType>
574             <complexType name="ProposalTransaction">
575                 <sequence>
576                     <element name="transactionIdentifier" type="string"/>
577                     <element name="transactionType" type="int"/>
578                     <element name="suppTransactionType" type="int"
579                         minOccurs="0"/>
580                     <element name="transferringRegistryCode" type="string"/>
581                     <element name="transferringRegistryAccountType" type="int"
582                         minOccurs="0"/>
583                     <element name="transferringRegistryAccountIdentifier"
584                         type="long" minOccurs="0"/>
585                     <element name="acquiringRegistryCode" type="string"/>
586                     <element name="acquiringRegistryAccountType" type="int"
587                         minOccurs="0"/>
588                     <element name="acquiringRegistryAccountIdentifier"
589                         type="long"
590                         minOccurs="0"/>
591                     <element name="notificationIdentifier" type="long"
592                         minOccurs="0"/>
593                     <element name="transactionBlocks"
594                         type="typens:ArrayOfReconciliationTransactionUnitBlock"/>

```

```

595         <element name="proposalUnitBlocks"
596             type="typens:ArrayOfTransactionUnitBlock"/>
597     </sequence>
598 </complexType>
599 <complexType name="ReconciliationUnitBlockIdentifier">
600     <sequence>
601         <element name="unitSerialBlockStart" type="long"/>
602         <element name="unitSerialBlockEnd" type="long"/>
603         <element name="originatingRegistryCode" type="string"/>
604     </sequence>
605 </complexType>
606 <complexType name="ArrayOfReconciliationUnitBlockIdentifier">
607     <complexContent>
608         <restriction base="soapenc:Array">
609             <attribute ref="soapenc:arrayType"
610                 wsdl:arrayType="typens:ReconciliationUnitBlockIdentifier[]"/>
611         </restriction>
612     </complexContent>
613 </complexType>
614 <complexType name="UnitBlockIdentifier">
615     <sequence>
616         <element name="unitSerialBlockStart" type="long"/>
617         <element name="unitSerialBlockEnd" type="long"/>
618         <element name="originatingPartyCode" type="string"/>
619         <element name="originatingRegistryCode"
620             type="string"/>
621     </sequence>
622 </complexType>
623 <complexType name="ArrayOfUnitBlockIdentifier">
624     <complexContent>
625         <restriction base="soapenc:Array">
626             <attribute ref="soapenc:arrayType"
627                 wsdl:arrayType="typens:UnitBlockIdentifier[]"
628                 />
629         </restriction>
630     </complexContent>
631 </complexType>
632 <complexType name="UnitBlock">
633     <sequence>
634         <element name="unitSerialBlockStart" type="long"/>
635         <element name="unitSerialBlockEnd" type="long"/>
636         <element name="originatingPartyCode" type="string"/>
637         <element name="originatingRegistryCode"
638             type="string"/>
639         <element name="unitType" type="int"/>
640         <element name="suppUnitType" type="int" minOccurs="0"/>
641         <element name="accountType" type="int"/>
642         <element name="accountIdentifier" type="long"
643             minOccurs="0"/>
644         <element name="applicableCommitPeriod" type="int"/>
645     </sequence>
646 </complexType>
647 <complexType name="ArrayOfUnitBlock">
648     <complexContent>
649         <restriction base="soapenc:Array">
650             <attribute ref="soapenc:arrayType"
651                 wsdl:arrayType="typens:UnitBlock[]"/>
652         </restriction>
653     </complexContent>
654 </complexType>
655 <complexType name="ReconciliationTransactionUnitBlock">
656     <sequence>
657         <element name="unitSerialBlockStart" type="long"/>
658         <element name="unitSerialBlockEnd" type="long"/>
659         <element name="originatingRegistryCode" type="string"/>
660         <element name="unitType" type="int"/>
661         <element name="suppUnitType" type="int" minOccurs="0"/>
662         <element name="originalCommitPeriod" type="int"/>
663         <element name="applicableCommitPeriod" type="int"/>
664         <element name="LULUCFActivity" type="int" minOccurs="0"/>
665         <element name="projectIdentifier" type="int" minOccurs="0"/>
666         <element name="track" type="int" minOccurs="0"/>
667         <element name="blockRole" type="string" minOccurs="0"/>
668         <element name="transferringRegistryAccountType" type="int"

```

```

668         minOccurs="0"/>
669     <element name="transferringRegistryAccountIdentifier"
670         type="long" minOccurs="0"/>
671     <element name="acquiringRegistryAccountType" type="int"
672         minOccurs="0"/>
673     <element name="acquiringRegistryAccountIdentifier"
674         type="long"
675         minOccurs="0"/>
676     <element name="yearInCommitmentPeriod" type="int"
677         minOccurs="0"/>
678     <element name="installationIdentifier" type="long"
679         minOccurs="0"/>
680     <element name="expiryDate" type="date" minOccurs="0"/>
681     </sequence>
682 </complexType>
683 <complexType name="ArrayOfReconciliationTransactionUnitBlock">
684     <complexContent>
685         <restriction base="soapenc:Array">
686             <attribute ref="soapenc:arrayType"
687                 wsdl:arrayType=
688                 "typens:ReconciliationTransactionUnitBlock[]"/>
689         </restriction>
690     </complexContent>
691 </complexType>
692 <complexType name="TransactionUnitBlock">
693     <sequence>
694         <element name="unitSerialBlockStart" type="long"/>
695         <element name="unitSerialBlockEnd" type="long"/>
696         <element name="originatingPartyCode" type="string"/>
697         <element name="originatingRegistryCode" type="string"/>
698         <element name="unitType" type="int"/>
699         <element name="suppUnitType" type="int" minOccurs="0"/>
700         <element name="originalCommitPeriod" type="int"/>
701         <element name="applicableCommitPeriod" type="int"/>
702         <element name="LULUCFActivity" type="int" minOccurs="0"/>
703         <element name="projectIdentifier" type="int" minOccurs="0"/>
704         <element name="track" type="int" minOccurs="0"/>
705         <element name="blockRole" type="string" minOccurs="0"/>
706         <element name="transferringRegistryAccountType" type="int"
707             minOccurs="0"/>
708         <element name="transferringRegistryAccountIdentifier"
709             type="long" minOccurs="0"/>
710         <element name="acquiringRegistryAccountType" type="int"
711             minOccurs="0"/>
712         <element name="acquiringRegistryAccountIdentifier"
713             type="long"
714             minOccurs="0"/>
715         <element name="yearInCommitmentPeriod" type="int"
716             minOccurs="0"/>
717         <element name="installationIdentifier" type="long"
718             minOccurs="0"/>
719         <element name="expiryDate" type="date" minOccurs="0"/>
720     </sequence>
721 </complexType>
722 <complexType name="ArrayOfTransactionUnitBlock">
723     <complexContent>
724         <restriction base="soapenc:Array">
725             <attribute ref="soapenc:arrayType"
726                 wsdl:arrayType="typens:TransactionUnitBlock[]"/>
727         </restriction>
728     </complexContent>
729 </complexType>
730 <complexType name="Total">
731     <sequence>
732         <element name="accountType" type="int"/>
733         <element name="accountIdentifier" type="long"
734             minOccurs="0"/>
735         <element name="accountCommitPeriod" type="int"/>
736         <element name="unitType" type="int"/>
737         <element name="suppUnitType" type="int" minOccurs="0"/>
738         <element name="unitCount" type="long"/>
739     </sequence>
740 </complexType>

```

```

741 <complexType name="ArrayOfTotal">
742 <complexContent>
743 <restriction base="soapenc:Array">
744 <attribute ref="soapenc:arrayType"
745 wsdl:arrayType="typens:Total[]" />
746 </restriction>
747 </complexContent>
748 </complexType>
749 <complexType name="UnitBlockRequest">
750 <sequence>
751 <element name="unitType" type="int" minOccurs="0"/>
752 <element name="suppUnitType" type="int" minOccurs="0"/>
753 <element name="accountCommitPeriod" type="int"
754 minOccurs="0"/>
755 <element name="accountType" type="int" minOccurs="0"/>
756 <element name="accountIdentifier" type="long"
757 minOccurs="0"/>
758 </sequence>
759 </complexType>
760 <complexType name="ArrayOfUnitBlockRequest">
761 <complexContent>
762 <restriction base="soapenc:Array">
763 <attribute ref="soapenc:arrayType"
764 wsdl:arrayType="typens:UnitBlockRequest[]" />
765 </restriction>
766 </complexContent>
767 </complexType>
768 <complexType name="EvaluationResult">
769 <sequence>
770 <element name="responseCode" type="int"/>
771 <element name="unitBlockIdentifiers"
772 type="typens:ArrayOfUnitBlockIdentifier"
773 minOccurs="0"/>
774 </sequence>
775 </complexType>
776 <complexType name="ArrayOfEvaluationResult">
777 <complexContent>
778 <restriction base="soapenc:Array">
779 <attribute ref="soapenc:arrayType"
780 wsdl:arrayType="typens:EvaluationResult[]" />
781 </restriction>
782 </complexContent>
783 </complexType>
784 <complexType name="ProvideTimeRequest">
785 <sequence>
786 <element name="from" type="string"/>
787 <element name="to" type="string"/>
788 <element name="majorVersion" type="int"/>
789 <element name="minorVersion" type="int"/>
790 <element name="ITLSystemTime" type="dateTime"/>
791 </sequence>
792 </complexType>
793 <complexType name="ProvideTimeResponse">
794 <sequence>
795 <element name="systemTime" type="dateTime"/>
796 <element name="resultIdentifier" type="int"/>
797 <element name="responseCodes" type="typens:ArrayOfInt"
798 minOccurs="0"/>
799 </sequence>
800 </complexType>
801 <complexType name="MessageRequest">
802 <sequence>
803 <element name="from" type="string"/>
804 <element name="to" type="string"/>
805 <element name="majorVersion" type="int"/>
806 <element name="minorVersion" type="int"/>
807 <element name="messageContent" type="string"/>
808 <element name="messageDateTime" type="dateTime"/>
809 </sequence>
810 </complexType>
811 <complexType name="MessageResponse">
812 <sequence>
813 <element name="resultIdentifier" type="int"/>

```

```

814         <element name="responseCodes" type="typens:ArrayOfInt"
815             minOccurs="0"/>
816     </sequence>
817 </complexType>
818 <complexType name="ProposalRequest">
819     <sequence>
820         <element name="from" type="string"/>
821         <element name="to" type="string"/>
822         <element name="majorVersion" type="int"/>
823         <element name="minorVersion" type="int"/>
824         <element name="proposedTransaction"
825             type="typens:ProposalTransaction"/>
826     </sequence>
827 </complexType>
828 <complexType name="ProposalResponse">
829     <sequence>
830         <element name="resultIdentifier" type="int"/>
831         <element name="responseCodes" type="typens:ArrayOfInt"
832             minOccurs="0"/>
833     </sequence>
834 </complexType>
835 <complexType name="NotificationRequest">
836     <sequence>
837         <element name="from" type="string"/>
838         <element name="to" type="string"/>
839         <element name="majorVersion" type="int"/>
840         <element name="minorVersion" type="int"/>
841         <element name="transactionIdentifier" type="string"/>
842         <element name="transactionStatus" type="int"/>
843         <element name="partyType" type="int"/>
844         <element name="evaluationResult"
845             type="typens:ArrayOfEvaluationResult"/>
846     </sequence>
847 </complexType>
848 <complexType name="NotificationResponse">
849     <sequence>
850         <element name="resultIdentifier" type="int"/>
851         <element name="responseCodes" type="typens:ArrayOfInt"
852             minOccurs="0"/>
853     </sequence>
854 </complexType>
855 <complexType name="ITLNoticeRequest">
856     <sequence>
857         <element name="from" type="string"/>
858         <element name="to" type="string"/>
859         <element name="majorVersion" type="int"/>
860         <element name="minorVersion" type="int"/>
861         <element name="messageContent" type="string"/>
862         <element name="messageDate" type="dateTime"/>
863         <element name="notificationType" type="int"/>
864         <element name="notificationIdentifier" type="long"/>
865         <element name="notificationStatus" type="int"/>
866         <element name="projectNumberIdentifier" type="intstring"
867             minOccurs="0"/>
868         <element name="unitType" type="int" minOccurs="0"/>
869         <element name="targetValue" type="long" minOccurs="0"/>
870         <element name="actionDueDate" type="date" minOccurs="0"/>
871         <element name="unitBlockIdentifiers"
872             type="typens:ArrayOf ReconciliationUnitBlockIdentifier"
873             minOccurs="0"/>
874     </sequence>
875 </complexType>
876 <complexType name="ITLNoticeResponse">
877     <sequence>
878         <element name="resultIdentifier" type="int"/>
879         <element name="responseCodes" type="typens:ArrayOfInt"
880             minOccurs="0"/>
881     </sequence>
882 </complexType>
883 <complexType name="ReconciliationResultRequest">
884     <sequence>
885         <element name="from" type="string"/>

```

```

887         <element name="to" type="string"/>
888         <element name="majorVersion" type="int"/>
889         <element name="minorVersion" type="int"/>
890         <element name="reconciliationIdentifier" type="string"/>
891         <element name="reconciliationStatus" type="int"/>
892         <element name="responseCodes" type="typens:ArrayOfInt"
893             minOccurs="0"/>
894     </sequence>
895 </complexType>
896 <complexType name="ReconciliationResultResponse">
897     <sequence>
898         <element name="resultIdentifier" type="int"/>
899         <element name="responseCodes" type="typens:ArrayOfInt"
900             minOccurs="0"/>
901     </sequence>
902 </complexType>
903 <complexType name="ProvideTotalsRequest">
904     <sequence>
905         <element name="from" type="string"/>
906         <element name="to" type="string"/>
907         <element name="majorVersion" type="int"/>
908         <element name="minorVersion" type="int"/>
909         <element name="reconciliationIdentifier" type="string"/>
910         <element name="reconciliationSnapshotDatetime"
911             type="dateTime"/>
912         <element name="reconciliationStatus" type="int"/>
913         <element name="unitType" type="int" minOccurs="0"/>
914         <element name="suppUnitType" type="int" minOccurs="0"/>
915         <element name="accountCommitPeriod" type="int"
916             minOccurs="0"/>
917         <element name="accountType" type="int" minOccurs="0"/>
918         <element name="byAccountFlag" type="int" minOccurs="0"/>
919         <element name="responseCodes" type="typens:ArrayOfInt"
920             minOccurs="0"/>
921     </sequence>
922 </complexType>
923 <complexType name="ProvideTotalsResponse">
924     <sequence>
925         <element name="resultIdentifier" type="int"/>
926         <element name="responseCodes" type="typens:ArrayOfInt"
927             minOccurs="0"/>
928     </sequence>
929 </complexType>
930 <complexType name="ProvideUnitBlocksRequest">
931     <sequence>
932         <element name="from" type="string"/>
933         <element name="to" type="string"/>
934         <element name="majorVersion" type="int"/>
935         <element name="minorVersion" type="int"/>
936         <element name="reconciliationIdentifier" type="string"/>
937         <element name="reconciliationSnapshotDatetime"
938             type="dateTime"/>
939         <element name="unitBlockRequests"
940             type="typens:ArrayOfUnitBlockRequest"/>
941         <element name="responseCodes" type="typens:ArrayOfInt"
942             minOccurs="0"/>
943     </sequence>
944 </complexType>
945 <complexType name="ProvideUnitBlocksResponse">
946     <sequence>
947         <element name="resultIdentifier" type="int"/>
948         <element name="responseCodes" type="typens:ArrayOfInt"
949             minOccurs="0"/>
950     </sequence>
951 </complexType>
952 <complexType name="ProvideAuditTrailRequest">
953     <sequence>
954         <element name="from" type="string"/>
955         <element name="to" type="string"/>
956         <element name="majorVersion" type="int"/>
957         <element name="minorVersion" type="int"/>
958         <element name="reconciliationIdentifier" type="string"/>
959         <element name="auditTrailBeginDatetime" type="dateTime"/>

```



```

960         <element name="auditTrailEndDatetime" type="dateTime"/>
961         <element name="accountType" type="int" minOccurs="0"/>
962         <element name="accountIdentifier" type="long"
963         minOccurs="0"/>
964         <element name="accountCommitPeriod" type="int"
965         minOccurs="0"/>
966         <element name="unitType" type="int" minOccurs="0"/>
967         <element name="suppUnitType" type="int" minOccurs="0"/>
968         <element name="unitBlockIdentifiers"
969         type="typens:ArrayOf ReconciliationUnitBlockIdentifier"
970         minOccurs="0"/>
971         <sequence>
972             <element name="responseCodes" type="typens:ArrayOfInt"
973             minOccurs="0"/>
974         </sequence>
975     </complexType>
976     <complexType name="ProvideAuditTrailResponse">
977         <sequence>
978             <element name="resultIdentifier" type="int"/>
979             <element name="responseCodes" type="typens:ArrayOfInt"
980             minOccurs="0"/>
981         </sequence>
982     </complexType>
983     <complexType name="ReceiveTotalsRequest">
984         <sequence>
985             <element name="from" type="string"/>
986             <element name="to" type="string"/>
987             <element name="majorVersion" type="int"/>
988             <element name="minorVersion" type="int"/>
989             <element name="reconciliationIdentifier" type="string"/>
990             <element name="totals" type="typens:ArrayOfTotal"/>
991         </sequence>
992     </complexType>
993     <complexType name="ReceiveTotalsResponse">
994         <sequence>
995             <element name="resultIdentifier" type="int"/>
996             <element name="responseCodes" type="typens:ArrayOfInt"
997             minOccurs="0"/>
998         </sequence>
999     </complexType>
1000     <complexType name="TransactionStatusRequest">
1001         <sequence>
1002             <element name="from" type="string"/>
1003             <element name="to" type="string"/>
1004             <element name="majorVersion" type="int"/>
1005             <element name="minorVersion" type="int"/>
1006             <element name="transactionIdentifier" type="string"/>
1007         </sequence>
1008     </complexType>
1009     <complexType name="TransactionStatusResponse">
1010         <sequence>
1011             <element name="transactionIdentifier" type="string"/>
1012             <element name="transactionStatus" type="int"/>
1013             <element name="transactionStatusDateTime" type="dateTime"/>
1014             <element name="resultIdentifier" type="int"/>
1015             <element name="responseCodes" type="typens:ArrayOfInt"
1016             minOccurs="0"/>
1017         </sequence>
1018     </complexType>
1019     <complexType name="ReceiveAuditTrailRequest">
1020         <sequence>
1021             <element name="from" type="string"/>
1022             <element name="to" type="string"/>
1023             <element name="majorVersion" type="int"/>
1024             <element name="minorVersion" type="int"/>
1025             <element name="reconciliationIdentifier" type="string"/>
1026             <element name="transactions"
1027             type="typens:ArrayOfTransaction"/>
1028         </sequence>
1029     </complexType>
1030     <complexType name="ReceiveAuditTrailResponse">
1031         <sequence>
1032             <element name="resultIdentifier" type="int"/>

```

```

1033         <element name="responseCodes" type="typens:ArrayOfInt"
1034             minOccurs="0"/>
1035     </sequence>
1036 </complexType>
1037 <complexType name="ReceiveUnitBlocksRequest">
1038     <sequence>
1039         <element name="from" type="string"/>
1040         <element name="to" type="string"/>
1041         <element name="majorVersion" type="int"/>
1042         <element name="minorVersion" type="int"/>
1043         <element name="reconciliationIdentifier" type="string"/>
1044         <element name="unitBlocks" type="typens:ArrayOfUnitBlock"/>
1045     </sequence>
1046 </complexType>
1047 <complexType name="ReceiveUnitBlocksResponse">
1048     <sequence>
1049         <element name="resultIdentifier" type="int"/>
1050         <element name="responseCodes" type="typens:ArrayOfInt"
1051             minOccurs="0"/>
1052     </sequence>
1053 </complexType>
1054 <complexType name="InitiateReconciliationRequest">
1055     <sequence>
1056         <element name="from" type="string"/>
1057         <element name="to" type="string"/>
1058         <element name="majorVersion" type="int"/>
1059         <element name="minorVersion" type="int"/>
1060         <element name="reconciliationIdentifier" type="string"/>
1061         <element name="snapshotDatetime" type="dateTime"/>
1062     </sequence>
1063 </complexType>
1064 <complexType name="InitiateReconciliationResponse">
1065     <sequence>
1066         <element name="resultIdentifier" type="int"/>
1067         <element name="responseCodes" type="typens:ArrayOfInt"
1068             minOccurs="0"/>
1069     </sequence>
1070 </complexType>
1071 </schema>
1072 </types>
1073 <message name="provideTimeRequest">
1074     <part name="provideTimeRequest" type="typens:ProvideTimeRequest"/>
1075 </message>
1076 <message name="provideTimeResponse">
1077     <part name="provideTimeResponse" type="typens:ProvideTimeResponse"/>
1078 </message>
1079 <message name="acceptMessageRequest">
1080     <part name="acceptMessageRequest" type="typens:MessageRequest"/>
1081 </message>
1082 <message name="acceptMessageResponse">
1083     <part name="acceptMessageResponse" type="typens:MessageResponse"/>
1084 </message>
1085 <message name="acceptProposalRequest">
1086     <part name="acceptProposalRequest" type="typens:ProposalRequest"/>
1087 </message>
1088 <message name="acceptProposalResponse">
1089     <part name="acceptProposalResponse" type="typens:ProposalResponse"/>
1090 </message>
1091 <message name="acceptNotificationRequest">
1092     <part name="acceptNotificationRequest" type="typens:NotificationRequest"/>
1093 </message>
1094 <message name="acceptNotificationResponse">
1095     <part name="acceptNotificationResponse" type="typens:NotificationResponse"/>
1096 </message>
1097 <message name="acceptITLNoticeRequest">
1098     <part name="acceptITLNoticeRequest" type="typens:ITLNoticeRequest"/>
1099 </message>
1100 <message name="acceptITLNoticeResponse">
1101     <part name="acceptITLNoticeResponse" type="typens:ITLNoticeResponse"/>
1102 </message>
1103 <message name="receiveReconciliationResultRequest">
1104     <part name="receiveReconciliationResultRequest"
1105         type="typens:ReconciliationResultRequest"/>

```

```

1106     </message>
1107     <message name="receiveReconciliationResultResponse">
1108         <part name="receiveReconciliationResultResponse"
1109             type="typens:ReconciliationResultResponse"/>
1110     </message>
1111     <message name="provideAuditTrailRequest">
1112         <part name="provideAuditTrailRequest" type="typens:ProvideAuditTrailRequest"/>
1113     </message>
1114     <message name="provideAuditTrailResponse">
1115         <part name="provideAuditTrailResponse" type="typens:ProvideAuditTrailResponse"/>
1116     </message>
1117     <message name="provideTotalsRequest">
1118         <part name="provideTotalsRequest" type="typens:ProvideTotalsRequest"/>
1119     </message>
1120     <message name="provideTotalsResponse">
1121         <part name="provideTotalsResponse" type="typens:ProvideTotalsResponse"/>
1122     </message>
1123     <message name="provideUnitBlocksRequest">
1124         <part name="provideUnitBlocksRequest" type="typens:ProvideUnitBlocksRequest"/>
1125     </message>
1126     <message name="provideUnitBlocksResponse">
1127         <part name="provideUnitBlocksResponse" type="typens:ProvideUnitBlocksResponse"/>
1128     </message>
1129     <message name="getTransactionStatusRequest">
1130         <part name="getTransactionStatusRequest" type="typens:TransactionStatusRequest"/>
1131     </message>
1132     <message name="getTransactionStatusResponse">
1133         <part name="getTransactionStatusResponse" type="typens:TransactionStatusResponse"/>
1134     </message>
1135     <message name="receiveAuditTrailRequest">
1136         <part name="receiveAuditTrailRequest" type="typens:ReceiveAuditTrailRequest"/>
1137     </message>
1138     <message name="receiveAuditTrailResponse">
1139         <part name="receiveAuditTrailResponse" type="typens:ReceiveAuditTrailResponse"/>
1140     </message>
1141     <message name="receiveTotalsRequest">
1142         <part name="receiveTotalsRequest" type="typens:ReceiveTotalsRequest"/>
1143     </message>
1144     <message name="receiveTotalsResponse">
1145         <part name="receiveTotalsResponse" type="typens:ReceiveTotalsResponse"/>
1146     </message>
1147     <message name="receiveUnitBlocksRequest">
1148         <part name="receiveUnitBlocksRequest" type="typens:ReceiveUnitBlocksRequest"/>
1149     </message>
1150     <message name="receiveUnitBlocksResponse">
1151         <part name="receiveUnitBlocksResponse" type="typens:ReceiveUnitBlocksResponse"/>
1152     </message>
1153     <message name="initiateReconciliationRequest">
1154         <part name="initiateReconciliationRequest"
1155             type="typens:InitiateReconciliationRequest"/>
1156     </message>
1157     <message name="initiateReconciliationResponse">
1158         <part name="initiateReconciliationResponse"
1159             type="typens:InitiateReconciliationResponse"/>
1160     </message>
1161 </definitions>

```

1162 **6. Summaries of Account Management Web Service Operations**

1163

1164 **6.1 CreateAccountRequest**

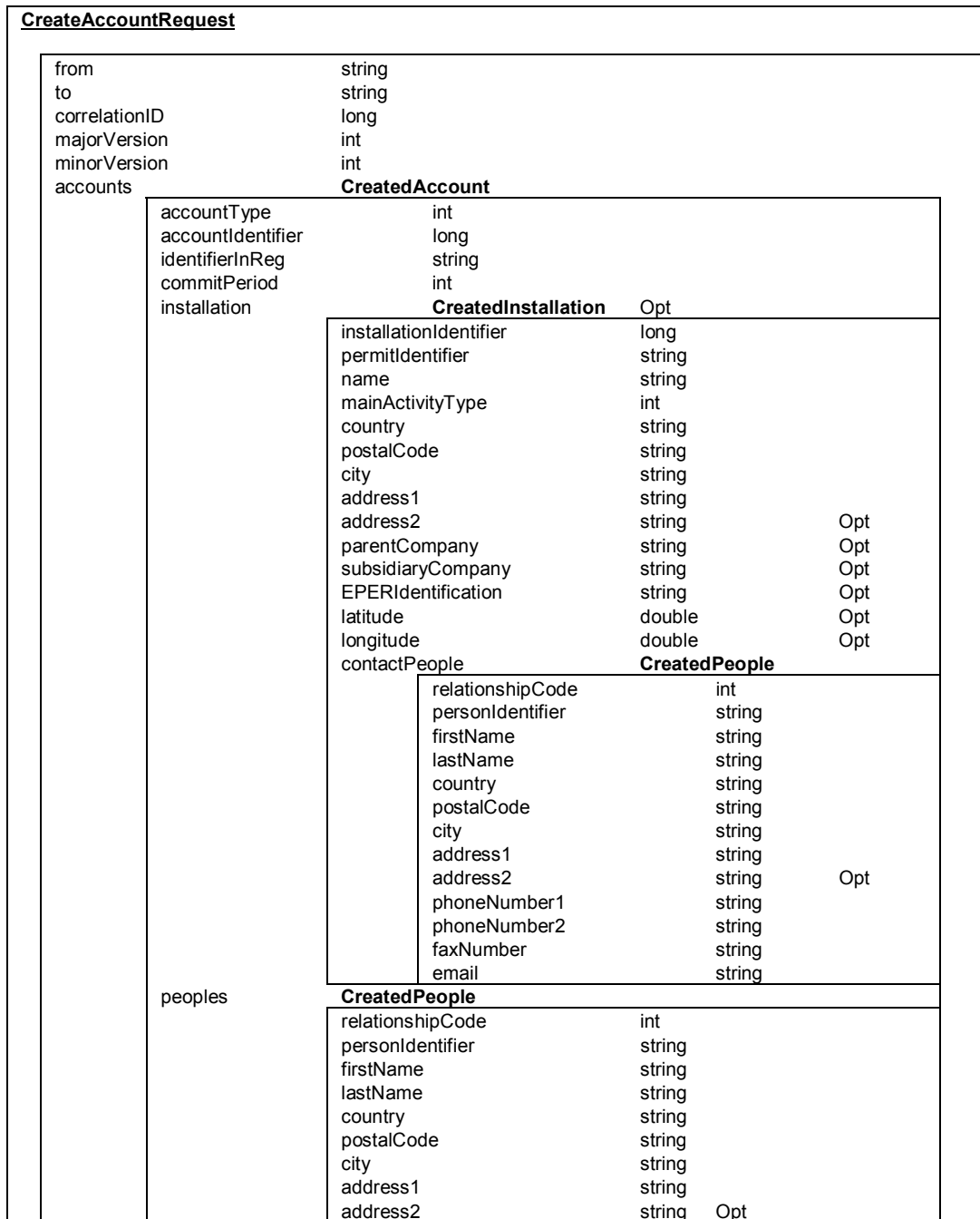
1165

1166 **Figure K13K15: CreateAccountRequest**

1167

Role(s): STLCITL

1168



(cont.)

1169

1170

1171
1172
1173

Figure K43K15: CreateAccount Request (cont.)
Role(s): STLCITL

phoneNumber1	string
phoneNumber2	string
faxNumber	string
email	string
CreateAccountResponse	
resultIdentifier	int
responseCode	int Opt

1174
1175

1176 **6.2 UpdateAccountRequest**

1177

1178

1179

1180

Figure K44K16: UpdateAccountRequest
Role(s): STLCITL

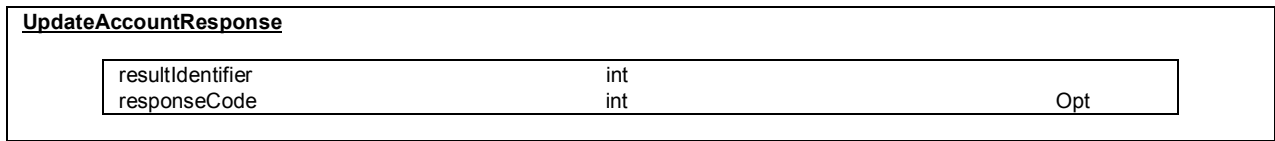
UpdateAccountRequest			
from	string		
to	string		
correlationID	long		
majorVersion	int		
minorVersion	int		
accounts	UpdatedAccount		
accountIdentifier	long		
identifierInReg	string	Opt	
installation	UpdatedInstallation		Opt
	permitIdentifier	string	Opt
	name	string	Opt
	mainActivityType	int	Opt
	country	string	Opt
	postalCode	string	Opt
	city	string	Opt
	address1	string	Opt
	address2	string	Opt
	parentCompany	string	Opt
	subsidiaryCompany	string	Opt
	EPERIdentification	string	Opt
	latitude	double	Opt
	longitude	double	Opt
	contactPeople	UpdatedPeople	
	action	int	
	relationshipCode	int	
	personIdentifier	string	
	firstName	string	Opt
	lastName	string	Opt
	country	string	Opt
	postalCode	string	Opt
	city	string	Opt
	address1	string	Opt
	address2	string	Opt
	phoneNumber1	string	Opt
	phoneNumber2	string	Opt
	faxNumber	string	Opt
	email	string	Opt
peoples	UpdatedPeople		Opt
	action	int	
	relationshipCode	int	
	personIdentifier	string	
	firstName	string	Opt
	lastName	string	Opt
	country	string	Opt
	postalCode	string	Opt
	city	string	Opt
	address1	string	Opt
	address2	string	Opt
	phoneNumber1	string	Opt
	phoneNumber2	string	Opt
	faxNumber	string	Opt
	email	string	Opt

(cont.)

1181

1182
1183
1184
1185

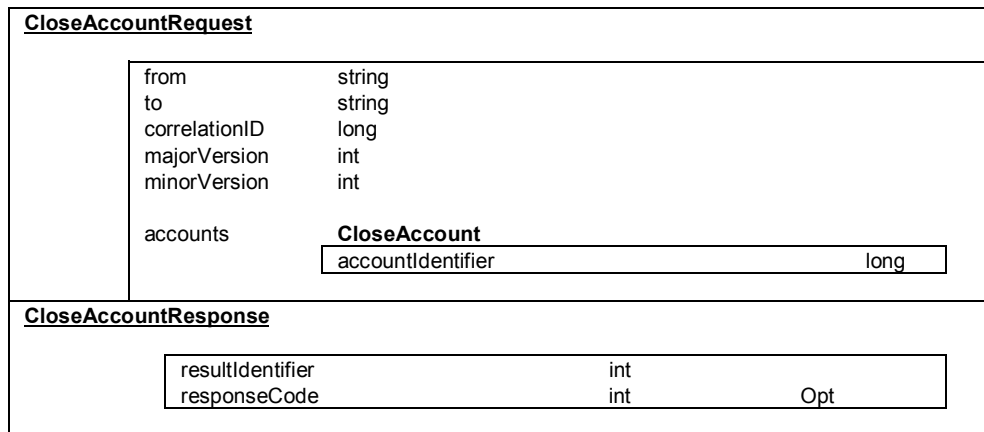
Figure K14K16: UpdateAccountRequest (cont.)
Role(s): **STLCITL**



1186
1187
1188
1189
1190
1191
1192

6.3 CloseAccountRequest

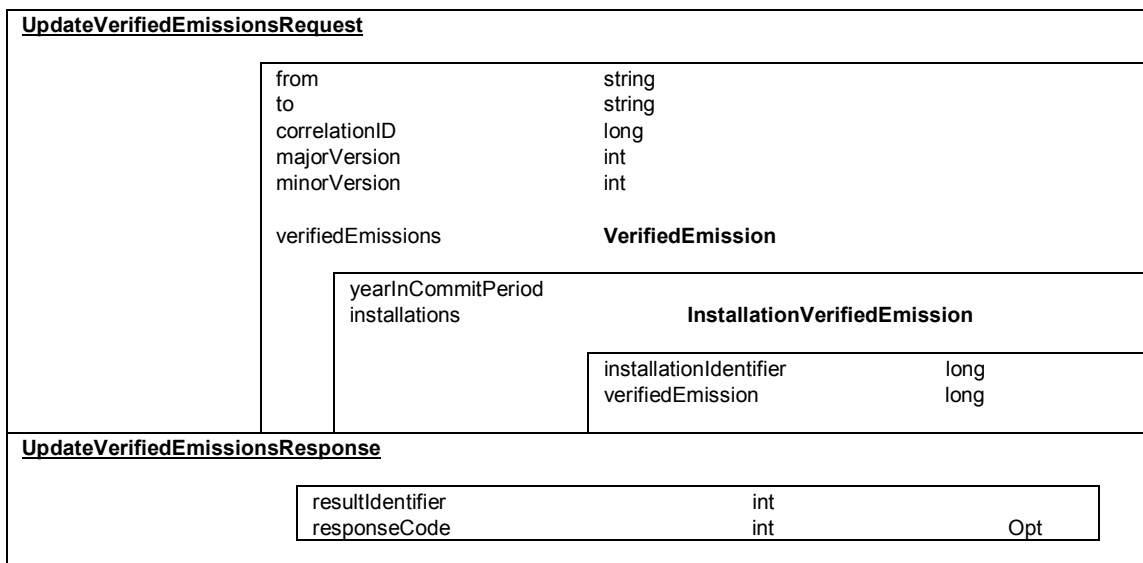
Figure K15K17: CloseAccountRequest
Role(s): **STLCITL**



1193
1194
1195
1196
1197
1198
1199

6.4 UpdateVerifiedEmissionsRequest

Figure K16K18: UpdateVerifiedEmissionsRequest
Role(s): **STLCITL**



1200
1201

1202 **6.5 ReceiveAccountOperationOutcomeRequest**

1203

1204

1205

1206

Figure K17K19: ReceiveAccountOperationOutcomeRequest
Role(s): Registry

<u>ReceiveAccountOperationOutcomeRequest</u>			
from	string		
to	string		
correlationID	long		
majorVersion	int		
minorVersion	int		
outcome	int		
outcomeDetails	OutcomeDetail		Opt
	responseCode	int	
	accountIdentifier	long	Opt
	installationIdentifier	long	Opt
<u>ReceiveAccountOperationOutcomeResponse</u>			
	resultIdentifier	int	
	responseCode	int	Opt

1207 7. Account Management WSDLs

1208

1209 7.1 Account Management Registry WSDL Description

1210

1211 <?xml version="1.0" encoding="UTF-8"?>

1212

1213 <definitions name="AccountManagement"

1214 targetNamespace="urn:KyotoProtocol:RegistrySystem: ~~STLCITL~~:1.0:0.0"

1215 xmlns:tns="urn:KyotoProtocol:RegistrySystem: ~~STLCITL~~:1.0:0.0"

1216 xmlns:typens="urn:KyotoProtocol:RegistrySystem: ~~STLCITL~~:Types:1.0:0.0"

1217 xmlns:soap="http://schemas.xmlsoap.org/wsdl/soap/"

1218 xmlns="http://schemas.xmlsoap.org/wsdl/">

1219

1220 <types>

1221

1222 <schema targetNamespace="urn:KyotoProtocol:RegistrySystem: ~~STLCITL~~:Types:1.0:0.0"

1223 xmlns:soapenc="http://schemas.xmlsoap.org/soap/encoding/"

1224 xmlns:wsdl="http://schemas.xmlsoap.org/wsdl/"

1225 xmlns="http://www.w3.org/2001/XMLSchema">

1226

1227 <import namespace="http://schemas.xmlsoap.org/soap/encoding/">

1228

1229 <complexType name="OutcomeDetail">

1230 <sequence>

1231 <!-- An outcome detail contains a response code
1232 per account/installation where a check failed -->

1233 <element name="responseCode" type="int"/>

1234 <element name="accountIdentifier" minOccurs="0" type="long"/>

1235 <element name="installationIdentifier" minOccurs="0" type="long"/>

1236 </sequence>

1237 </complexType>

1238

1239 <complexType name="ArrayOfOutcomeDetail">

1240 <complexContent>

1241 <restriction base="soapenc:Array">

1242 <attribute ref="soapenc:arrayType"

1243 wsdl:arrayType="typens:OutcomeDetail[]"/>

1244 </restriction>

1245 </complexContent>

1246 </complexType>

1247

1248 <complexType name="ReceiveAccountOperationOutcomeRequest">

1249 <sequence>

1250 <element name="from" type="string"/>

1251 <element name="to" type="string"/>

1252 <element name="correlationID" type="long"/>

1253 <element name="majorVersion" type="int"/>

1254 <element name="minorVersion" type="int"/>

1255 <element name="outcome" type="int"/>

1256 <element name="outcomeDetails" minOccurs="0"

1257 type="typens:ArrayOfOutcomeDetail"/>

1258 </sequence>

1259 </complexType>

1260

1261 <complexType name="ReceiveAccountOperationOutcomeResponse">

1262 <sequence>

1263 <element name="resultIdentifier" type="int"/>

1264 <element name="responseCode" minOccurs="0" type="int"/>

1265 </sequence>

1266 </complexType>

1267

1268 </schema>

1269

1270 </types>

1271

1272 <message name="receiveAccountOperationOutcomeRequest">

1273 <part name="ReceiveAccountOperationOutcomeRequest"

1274 type="typens:ReceiveAccountOperationOutcomeRequest"/>

1275 </message>

1276

1277 <message name="receiveAccountOperationOutcomeResponse">

1278

```

1279     <part name="return"
1280         type="typens:ReceiveAccountOperationOutcomeResponse"/>
1281 </message>
1282
1283 <portType name="AccountManagementPort">
1284
1285     <operation name="receiveAccountOperationOutcome">
1286         <input message="tns:receiveAccountOperationOutcomeRequest"/>
1287         <output message="tns:receiveAccountOperationOutcomeResponse"/>
1288     </operation>
1289
1290 </portType>
1291
1292 <binding name="AccountManagementBinding" type="tns:AccountManagementPort">
1293
1294     <soap:binding transport="http://schemas.xmlsoap.org/soap/http" style="rpc"/>
1295
1296     <operation name="receiveAccountOperationOutcome">
1297         <soap:operation soapAction="" />
1298         <input>
1299             <soap:body use="encoded"
1300                 encodingStyle="http://schemas.xmlsoap.org/soap/encoding/"
1301                 namespace="urn:KyotoProtocol:RegistrySystem:STLCITL:1.0:0.0"/>
1302         </input>
1303         <output>
1304             <soap:body use="encoded"
1305                 encodingStyle="http://schemas.xmlsoap.org/soap/encoding/"
1306                 namespace="urn:KyotoProtocol:RegistrySystem:STLCITL:1.0:0.0"/>
1307         </output>
1308     </operation>
1309
1310 </binding>
1311
1312 <service name="AccountManagementService">
1313     <port name="AccountManagementPort" binding="tns:AccountManagementBinding">
1314         <soap:address location="http://REPLACE.WITH.ACTUAL.URL"/>
1315     </port>
1316 </service>
1317
1318 </definitions>
1319

```

7.2 Account Management Transaction Log WSDL Description

```

1320 <?xml version="1.0" encoding="UTF-8"?>
1321
1322 <definitions name="AccountManagement"
1323     targetNamespace="urn:KyotoProtocol:RegistrySystem:STLCITL:1.0:0.0"
1324     xmlns:tns="urn:KyotoProtocol:RegistrySystem:STLCITL:1.0:0.0"
1325     xmlns:typens="urn:KyotoProtocol:RegistrySystem:STLCITL:Types:1.0:0.0"
1326     xmlns:soap="http://schemas.xmlsoap.org/wsdl/soap/"
1327     xmlns="http://schemas.xmlsoap.org/wsdl/">
1328
1329     <types>
1330
1331         <schema targetNamespace="urn:KyotoProtocol:RegistrySystem:STLCITL:Types:1.0:0.0"
1332             xmlns:soapenc="http://schemas.xmlsoap.org/soap/encoding/"
1333             xmlns:wsdl="http://schemas.xmlsoap.org/wsdl/"
1334             xmlns="http://www.w3.org/2001/XMLSchema">
1335
1336             <import namespace="http://schemas.xmlsoap.org/soap/encoding/" />
1337
1338             <complexType name="CreatedAccount">
1339                 <sequence>
1340                     <element name="accountType" type="int"/>
1341                     <element name="accountIdentifier" type="long"/>
1342                     <element name="identifierInReg" type="string"/>
1343                     <element name="commitPeriod" type="int"/>
1344                     <element name="installation" minOccurs="0"
1345                         type="typens:CreatedInstallation"/>
1346                     <element name="peoples" minOccurs="0"
1347                         type="typens:ArrayOfCreatedPeople"/>
1348                 </sequence>
1349
1350

```

```

1351 </complexType>
1352
1353 <complexType name="ArrayOfCreatedAccount">
1354   <complexContent>
1355     <restriction base="soapenc:Array">
1356       <attribute ref="soapenc:arrayType"
1357         wsdl:arrayType="typens:CreatedAccount[]" />
1358     </restriction>
1359   </complexContent>
1360 </complexType>
1361
1362 <complexType name="CreatedInstallation">
1363   <sequence>
1364     <element name="installationIdentifier" type="long"/>
1365     <element name="permitIdentifier" type="string"/>
1366     <element name="name" type="string"/>
1367     <element name="mainActivityType" type="int"/>
1368     <element name="country" type="string"/>
1369     <element name="postalCode" type="string"/>
1370     <element name="city" type="string"/>
1371     <element name="address1" type="string"/>
1372     <element name="address2" minOccurs="0" type="string"/>
1373     <element name="parentCompany" minOccurs="0" type="string"/>
1374     <element name="subsidiaryCompany" minOccurs="0" type="string"/>
1375     <element name="EPERIDidentification" minOccurs="0" type="string"/>
1376     <element name="latitude" minOccurs="0" type="double"/>
1377     <element name="longitude" minOccurs="0" type="double"/>
1378     <element name="contactPeople" type="typens:CreatedPeople"/>
1379   </sequence>
1380 </complexType>
1381
1382 <complexType name="CreatedPeople">
1383   <sequence>
1384     <element name="relationshipCode" type="int"/>
1385     <element name="personIdentifier" type="string"/>
1386     <element name="firstName" minOccurs="0" type="string"/>
1387     <!-- If the people is an organization (i.e. not a physical person)
1388          lastName should contain the organization's name -->
1389     <element name="lastName" type="string"/>
1390     <element name="country" type="string"/>
1391     <element name="postalCode" type="string"/>
1392     <element name="city" type="string"/>
1393     <element name="address1" type="string"/>
1394     <element name="address2" minOccurs="0" type="string"/>
1395     <element name="phoneNumber1" type="string"/>
1396     <element name="phoneNumber2" type="string"/>
1397     <element name="faxNumber" type="string"/>
1398     <element name="email" type="string"/>
1399   </sequence>
1400 </complexType>
1401
1402 <complexType name="ArrayOfCreatedPeople">
1403   <complexContent>
1404     <restriction base="soapenc:Array">
1405       <attribute ref="soapenc:arrayType"
1406         wsdl:arrayType="typens:CreatedPeople[]" />
1407     </restriction>
1408   </complexContent>
1409 </complexType>
1410
1411 <complexType name="UpdatedAccount">
1412   <sequence>
1413     <element name="accountIdentifier" type="long"/>
1414     <element name="identifierInReg" minOccurs="0" type="string"/>
1415     <element name="installation" minOccurs="0"
1416       type="typens:UpdatedInstallation"/>
1417     <element name="peoples" minOccurs="0"
1418       type="typens:ArrayOfUpdatedPeople"/>
1419   </sequence>
1420 </complexType>
1421
1422 <complexType name="ArrayOfUpdatedAccount">
1423   <complexContent>

```

```

1424         <restriction base="soapenc:Array">
1425             <attribute ref="soapenc:arrayType"
1426                 wsdl:arrayType="typens:UpdatedAccount[]" />
1427         </restriction>
1428     </complexContent>
1429 </complexType>
1430
1431 <complexType name="UpdatedInstallation">
1432     <sequence>
1433         <element name="permitIdentifier" minOccurs="0" type="string"/>
1434         <element name="name" minOccurs="0" type="string"/>
1435         <element name="mainActivityType" minOccurs="0" type="int"/>
1436         <element name="country" minOccurs="0" type="string"/>
1437         <element name="postalCode" minOccurs="0" type="string"/>
1438         <element name="city" minOccurs="0" type="string"/>
1439         <element name="address1" minOccurs="0" type="string"/>
1440         <element name="address2" minOccurs="0" type="string"/>
1441         <element name="parentCompany" minOccurs="0" type="string"/>
1442         <element name="subsidiaryCompany" minOccurs="0" type="string"/>
1443         <element name="EPERIdentification" minOccurs="0" type="string"/>
1444         <element name="latitude" minOccurs="0" type="double"/>
1445         <element name="longitude" minOccurs="0" type="double"/>
1446         <element name="contactPeople" minOccurs="0"
1447             type="typens:UpdatedPeople"/>
1448     </sequence>
1449 </complexType>
1450
1451 <complexType name="UpdatedPeople">
1452     <sequence>
1453         <!-- action : add==1, update==2, delete==3 -->
1454         <element name="action" type="int"/>
1455         <element name="relationshipCode" type="int"/>
1456         <element name="personIdentifier" type="string"/>
1457         <element name="firstName" minOccurs="0" type="string"/>
1458         <element name="lastName" minOccurs="0" type="string"/>
1459         <element name="country" minOccurs="0" type="string"/>
1460         <element name="postalCode" minOccurs="0" type="string"/>
1461         <element name="city" minOccurs="0" type="string"/>
1462         <element name="address1" minOccurs="0" type="string"/>
1463         <element name="address2" minOccurs="0" type="string"/>
1464         <element name="phoneNumber1" minOccurs="0" type="string"/>
1465         <element name="phoneNumber2" minOccurs="0" type="string"/>
1466         <element name="faxNumber" minOccurs="0" type="string"/>
1467         <element name="email" minOccurs="0" type="string"/>
1468     </sequence>
1469 </complexType>
1470
1471 <complexType name="ArrayOfUpdatedPeople">
1472     <complexContent>
1473         <restriction base="soapenc:Array">
1474             <attribute ref="soapenc:arrayType"
1475                 wsdl:arrayType="typens:UpdatedPeople[]" />
1476         </restriction>
1477     </complexContent>
1478 </complexType>
1479
1480 <complexType name="ClosedAccount">
1481     <sequence>
1482         <element name="accountIdentifier" type="long"/>
1483     </sequence>
1484 </complexType>
1485
1486 <complexType name="ArrayOfClosedAccount">
1487     <complexContent>
1488         <restriction base="soapenc:Array">
1489             <attribute ref="soapenc:arrayType"
1490                 wsdl:arrayType="typens:ClosedAccount[]" />
1491         </restriction>
1492     </complexContent>
1493 </complexType>
1494
1495 <complexType name="VerifiedEmission">
1496     <sequence>

```

```

1497         <element name="yearInCommitPeriod" type="int"/>
1498         <element name="installations"
1499             type="typens:ArrayOfInstallationVerifiedEmission"/>
1500     </sequence>
1501 </complexType>
1502
1503 <complexType name="ArrayOfVerifiedEmission">
1504     <complexContent>
1505         <restriction base="soapenc:Array">
1506             <attribute ref="soapenc:arrayType"
1507                 wsdl:arrayType="typens:VerifiedEmission[]"/>
1508         </restriction>
1509     </complexContent>
1510 </complexType>
1511
1512 <complexType name="InstallationVerifiedEmission">
1513     <sequence>
1514         <element name="installationIdentifier" type="long"/>
1515         <element name="verifiedEmission" type="long"/>
1516     </sequence>
1517 </complexType>
1518
1519 <complexType name="ArrayOfInstallationVerifiedEmission">
1520     <complexContent>
1521         <restriction base="soapenc:Array">
1522             <attribute ref="soapenc:arrayType"
1523                 wsdl:arrayType="typens:InstallationVerifiedEmission[]"/>
1524         </restriction>
1525     </complexContent>
1526 </complexType>
1527
1528 <complexType name="CreateAccountRequest">
1529     <sequence>
1530         <element name="from" type="string"/>
1531         <element name="to" type="string"/>
1532         <element name="correlationID" type="long"/>
1533         <element name="majorVersion" type="int"/>
1534         <element name="minorVersion" type="int"/>
1535
1536         <element name="accounts" type="typens:ArrayOfCreatedAccount"/>
1537     </sequence>
1538 </complexType>
1539
1540 <complexType name="CreateAccountResponse">
1541     <sequence>
1542         <element name="resultIdentifier" type="int"/>
1543         <element name="responseCode" minOccurs="0" type="int"/>
1544     </sequence>
1545 </complexType>
1546
1547 <complexType name="UpdateAccountRequest">
1548     <sequence>
1549         <element name="from" type="string"/>
1550         <element name="to" type="string"/>
1551         <element name="correlationID" type="long"/>
1552         <element name="majorVersion" type="int"/>
1553         <element name="minorVersion" type="int"/>
1554         <element name="accounts" type="typens:ArrayOfUpdatedAccount"/>
1555     </sequence>
1556 </complexType>
1557
1558 <complexType name="UpdateAccountResponse">
1559     <sequence>
1560         <element name="resultIdentifier" type="int"/>
1561         <element name="responseCode" minOccurs="0" type="int"/>
1562     </sequence>
1563 </complexType>
1564
1565 <complexType name="CloseAccountRequest">
1566     <sequence>
1567         <element name="from" type="string"/>
1568         <element name="to" type="string"/>
1569         <element name="correlationID" type="long"/>

```

```

1570         <element name="majorVersion" type="int"/>
1571         <element name="minorVersion" type="int"/>
1572         <element name="accounts" type="typens:ArrayOfClosedAccount"/>
1573     </sequence>
1574 </complexType>
1575
1576 <complexType name="CloseAccountResponse">
1577     <sequence>
1578         <element name="resultIdentifier" type="int"/>
1579         <element name="responseCode" minOccurs="0" type="int"/>
1580     </sequence>
1581 </complexType>
1582
1583 <complexType name="UpdateVerifiedEmissionsRequest">
1584     <sequence>
1585         <element name="from" type="string"/>
1586         <element name="to" type="string"/>
1587         <element name="correlationID" type="long"/>
1588         <element name="majorVersion" type="int"/>
1589         <element name="minorVersion" type="int"/>
1590         <element name="verifiedEmissions"
1591             type="typens:ArrayOfVerifiedEmission"/>
1592     </sequence>
1593 </complexType>
1594
1595 <complexType name="UpdateVerifiedEmissionsResponse">
1596     <sequence>
1597         <element name="resultIdentifier" type="int"/>
1598         <element name="responseCode" minOccurs="0" type="int"/>
1599     </sequence>
1600 </complexType>
1601
1602 </schema>
1603
1604 </types>
1605
1606 <message name="createAccountRequest">
1607     <part name="CreateAccountRequest" type="typens:CreateAccountRequest"/>
1608 </message>
1609
1610 <message name="createAccountResponse">
1611     <part name="return" type="typens:CreateAccountResponse"/>
1612 </message>
1613
1614 <message name="updateAccountRequest">
1615     <part name="UpdateAccountRequest" type="typens:UpdateAccountRequest"/>
1616 </message>
1617
1618 <message name="updateAccountResponse">
1619     <part name="return" type="typens:UpdateAccountResponse"/>
1620 </message>
1621
1622 <message name="closeAccountRequest">
1623     <part name="CloseAccountRequest" type="typens:CloseAccountRequest"/>
1624 </message>
1625
1626 <message name="closeAccountResponse">
1627     <part name="return" type="typens:CloseAccountResponse"/>
1628 </message>
1629
1630 <message name="updateVerifiedEmissionsRequest">
1631     <part name="UpdateVerifiedEmissionsRequest"
1632         type="typens:UpdateVerifiedEmissionsRequest"/>
1633 </message>
1634
1635 <message name="updateVerifiedEmissionsResponse">
1636     <part name="return"
1637         type="typens:UpdateVerifiedEmissionsResponse"/>
1638 </message>
1639
1640 <portType name="AccountManagementPort">
1641     <operation name="createAccount">
1642

```

```

1643     <input message="tns:createAccountRequest"/>
1644     <output message="tns:createAccountResponse"/>
1645 </operation>
1646
1647 <operation name="updateAccount">
1648     <input message="tns:updateAccountRequest"/>
1649     <output message="tns:updateAccountResponse"/>
1650 </operation>
1651
1652 <operation name="closeAccount">
1653     <input message="tns:closeAccountRequest"/>
1654     <output message="tns:closeAccountResponse"/>
1655 </operation>
1656
1657 <operation name="updateVerifiedEmissions">
1658     <input message="tns:updateVerifiedEmissionsRequest"/>
1659     <output message="tns:updateVerifiedEmissionsResponse"/>
1660 </operation>
1661
1662 </portType>
1663
1664 <binding name="AccountManagementBinding" type="tns:AccountManagementPort">
1665
1666     <soap:binding transport="http://schemas.xmlsoap.org/soap/http" style="rpc"/>
1667
1668     <operation name="createAccount">
1669         <soap:operation soapAction="" />
1670         <input>
1671             <soap:body use="encoded"
1672                 encodingStyle="http://schemas.xmlsoap.org/soap/encoding/"
1673                 namespace="urn:KyotoProtocol:RegistrySystem:STLCITL:1.0:0.0"/>
1674         </input>
1675         <output>
1676             <soap:body use="encoded"
1677                 encodingStyle="http://schemas.xmlsoap.org/soap/encoding/"
1678                 namespace="urn:KyotoProtocol:RegistrySystem:STLCITL:1.0:0.0"/>
1679         </output>
1680     </operation>
1681
1682     <operation name="updateAccount">
1683         <soap:operation soapAction="" />
1684         <input>
1685             <soap:body use="encoded"
1686                 encodingStyle="http://schemas.xmlsoap.org/soap/encoding/"
1687                 namespace="urn:KyotoProtocol:RegistrySystem:STLCITL:1.0:0.0"/>
1688         </input>
1689         <output>
1690             <soap:body use="encoded"
1691                 encodingStyle="http://schemas.xmlsoap.org/soap/encoding/"
1692                 namespace="urn:KyotoProtocol:RegistrySystem:STLCITL:1.0:0.0"/>
1693         </output>
1694     </operation>
1695
1696     <operation name="closeAccount">
1697         <soap:operation soapAction="" />
1698         <input>
1699             <soap:body use="encoded"
1700                 encodingStyle="http://schemas.xmlsoap.org/soap/encoding/"
1701                 namespace="urn:KyotoProtocol:RegistrySystem:STLCITL:1.0:0.0"/>
1702         </input>
1703         <output>
1704             <soap:body use="encoded"
1705                 encodingStyle="http://schemas.xmlsoap.org/soap/encoding/"
1706                 namespace="urn:KyotoProtocol:RegistrySystem:STLCITL:1.0:0.0"/>
1707         </output>
1708     </operation>
1709
1710     <operation name="updateVerifiedEmissions">
1711         <soap:operation soapAction="" />
1712         <input>
1713             <soap:body use="encoded"
1714                 encodingStyle="http://schemas.xmlsoap.org/soap/encoding/"
1715                 namespace="urn:KyotoProtocol:RegistrySystem:STLCITL:1.0:0.0"/>

```

```
1716     </input>
1717     <output>
1718         <soap:body use="encoded"
1719             encodingStyle="http://schemas.xmlsoap.org/soap/encoding/"
1720             namespace="urn:KyotoProtocol:RegistrySystem: SEPCITL:1.0:0.0"/>
1721     </output>
1722 </operation>
1723
1724 </binding>
1725
1726 <service name="AccountManagementService">
1727     <port name="AccountManagementPort" binding="tns:AccountManagementBinding">
1728         <soap:address location="http://REPLACE.WITH.ACTUAL.URL"/>
1729     </port>
1730 </service>
1731
1732 </definitions>
```


1733 **Annex L**
1734 **WSDL Examples and Instructions**
1735
1736

1737 **1. Using the Web Services and WSDLs for Specific Transactions**
1738

1739 This section provides additional information on how data ~~should~~**must** be provided for each
1740 transaction type. It defines the guiding principles, transaction-specific rules or guidelines and
1741 examples, both for the Kyoto Protocol and the ~~EU GHG programs~~ **European Union (EU)**
1742 **emissions trading scheme**.
1743

1744 **1.1 Principles**
1745

1746 The following principles have been agreed upon to guide the rules relating to submission of data
1747 via the Web services required in this document.
1748

- 1749 • Transaction messages will contain non duplicative data, wherever possible. Redundant
1750 data are discouraged because it creates the potential for conflicting data and the need for
1751 additional checks. Non-essential data are not expected, except where these data may
1752 improve the readability of the XML message or provide additional information to clarify a
1753 process.
1754
- 1755 • For transaction types which are designed to modify the characteristics of a unit block
1756 (such as conversion, expiry date change, or the removal or addition of a supplementary
1757 unit type code), the incoming data will contain the values proposed to be changed, not the
1758 existing values.
1759
- 1760 • Wherever possible, the content of both the Kyoto and Supplementary Program
1761 transactions will adhere to the same rules and adopt similar conventions for receipt,
1762 checking and handling potential conflicts.
1763

1764 **1.2 Transaction Rules**
1765

1766 The following "rules" have been applied to the examples below and should be used to guide the
1767 development of requirements for other Kyoto transactions or transactions needed for a
1768 supplementary transaction log. **Information about transactions for the EU Community**
1769 **Independent Transaction Log (CITL) is also provided since the CITL will be operating concurrently**
1770 **with the ITL**.
1771

- 1772 • If the same data are provided at both the transaction level and the unit block level, the
1773 data at the transaction level will be presumed to be correct and the unit block level data
1774 will be ignored.
1775
- 1776 • Transactions may contain multiple "transfers" between accounts or "updates" as long as
1777 the unit blocks involved are for the same Commitment Period (with the exception for EU
1778 transaction 04-03 which retires allowances for Commitment Period 0 and cancels CERs
1779 for Commitment Period 1, and **transaction** 10-41 which cancels unit blocks for one
1780 Commitment Period and replaces them with unit blocks for the next Commitment Period).
1781 Extremely complex or large transactions result in a higher risk that an error will be
1782 identified and the entire transaction rejected.
1783
- 1784 • In general, the Kyoto Protocol does not require Account Identifiers to be specified.
1785 However, when the account type is cancellation, replacement or retirement, the Account
1786 Identifier must be provided. For EU purposes, all transactions involving movement of an
1787 allowance from one account to another requires the Account Identifier.
1788

1789
1790
1791
1792
1793
1794
1795

- Figure L1 identifies by unit type the data for unit characteristics expected under the Kyoto Protocol. Figure L2 describes the circumstances for which data are provided for other parameters specific to transaction types. Figure L3 summarizes by transaction type how Registry, Account Identifiers and account types should be provided.

Figure L1: Unit Type Specific Parameters

Parameter	Unit Type						
	AAU (1)	RMU (2)	ERU from AAU (3)	ERU from RMU (4)	CER (5)	tCER (6)	ICER (7)
LULUCF Activity	Null	Provide value	Null	Provide value	Null	Provide value	Provide value
Project Identifier	Null	Null	Provide value	Provide value	Provide value	Provide value	Provide value
Track	Null	Null	Provide value	Provide value	Null	Null	Null
Expiry Date	Null	Null	Null	Null	Null	Provide value	Provide value

1796
1797
1798
1799

Figure L2: Transaction Type Specific Parameters

Parameter	Applicable Transaction Types
Notification Identifier	Only used in replacement transactions if the transaction is prompted by non-submission of certification, or by reversal of storage, or cancellation transactions for excess issuance, or impending tCER or ICER expiry.
Block Role	Only used during replacement (transaction type 6). Value is "REP" for the blocks that are being replaced.
Year in commitment period	Only used in EU transactions during Issue of Force Majeure Allowances (transaction type 01-54), Surrender of Allowances (transaction type 10-02) and Allocation of Allowances (transaction type 10-53).
Installation Identifier	Only used in EU transactions during Issue of Force Majeure Allowances (transaction type 01-54), Allocation of Allowances (transaction type 10-53).

1800
1801

1802
1803

Figure L3: Transaction and Block Information for Transferring and Acquiring Parties

Transaction Type	Transferring Party	Acquiring Party
Issuance	Registry Code	Registry Code Account Type Account ID (EU only)
Conversion	Registry Code Account Type	Registry Code
External Transfers	Registry Code Account Type Account ID	Registry Code Account Type Account ID
Cancellation, Replacement, and Retirement	Registry Code Account Type Account ID (EU only)	Registry Code Account Type Account ID
Carry-over	Registry Code Account Type	Registry Code
Expiry Date Change	Registry Code Account Type	Registry Code
Internal (EU only)	Registry Code Account Type Account ID	Registry Code Account Type Account ID (EU only)

1804
1805
1806
1807
1808
1809

For EU transactions for which the Account Type and Account ID are required, ~~these elements should~~ **Account Type and Account ID must** be included at either the transaction level or unit block level, but not both levels.

1.3 Transaction Element Descriptions

The following elements will be populated for all transactions and will conform to these standards:

1810
1811
1812
1813
1814
1815
1816
1817
1818
1819
1820
1821
1822
1823
1824
1825
1826
1827
1828
1829
1830
1831
1832
1833
1834

- From - the registry **or entity** sending the XML request. ~~This may not be the same registry as the transferring registry for the transaction.~~ For messages received by registries, this value will always be the ITL.
- To - The registry receiving an XML request. This may not be the same registry as the acquiring registry for the transaction. For messages sent by registries, this value will always be the ITL.
- Major Version Number - Major Version number of the DES. This must be the current version or the message will be rejected
- Minor Version Number - Minor Version number of the DES. If this number does not equal the latest version, a warning will be generated, but the XML message will be accepted.
- Transaction Identifier - Unique transaction identifier generated by the registry initiating the transaction (transferring registry).
- Transaction Type - integer represented the type of transaction as specified in the DES.
- Transferring Registry Code - required for all transactions.

1835
1836
1837
1838
1839
1840
1841
1842
1843
1844
1845
1846
1847
1848
1849
1850
1851
1852
1853
1854
1855
1856
1857
1858
1859
1860
1861
1862
1863
1864
1865
1866
1867
1868
1869
1870
1871
1872
1873
1874
1875
1876
1877
1878
1879
1880
1881
1882
1883
1884
1885
1886
1887
1888
1889
1890

- Acquiring Registry Code - required for all transactions.

The use of the following elements for Kyoto Protocol transactions depends on the transaction type.

- Transferring Account Type - required for all transactions except Issuance.
- Transferring Account Identifier - required for External Transfers.
- Acquiring Account Type - required for Issuance, External Transfers, Cancellation, Retirement, and Replacement to designate the account type receiving the units.
- Acquiring Account Identifier - required for External Transfers. Also required for other Kyoto transactions whenever the acquiring account type is provided and is either cancellation, replacement, or retirement and not required for conversion, carry-over and expiry date change transactions.
- Notification Identifier - required for Replacement transactions that are in response to a notification sent by the ITL as defined in Section 6. This includes transactions for reversal ~~in~~-of storage at a project site, ~~or~~ the lack of a certification report for a project, ~~and~~ cancellation required in response to excess issuance of tCERs and ICERs, **all carry-over transactions, and replacements initiated in response to impending tCER or ICER expiry.** This value must be the Notification ID sent by the ITL in the original notification to which this transaction is responding.

Note: The Supplemental Transaction Type is never provided in Kyoto-only transactions.

1.4 Transaction Unit Block Element Descriptions

There is no restriction on the number of units blocks which may be included in a transaction. However, all transaction proposals must contain at least one unit block. Multiple blocks may be issued in a single transaction by submitting an array of unit blocks. **Where multiple blocks are included they must be for the same Commitment Period.**

For Kyoto transactions the following fields are always required:

- Serial block start
- Serial block end
- Originating ~~party~~-registry code
- Unit type
- Original Commitment Period
- Applicable Commitment Period

The use of the following fields depends on the unit characteristics and transaction type:

- LULUCF Activity Code - required for RMUs, tCERs, and ICERs in all transaction types.
- Project Identifier - required for **ERUs**, CERs, tCERs, and ICERs in all transaction types.
- Track - required for ERUs.

1891 • Block Role - needed in Replacement transactions to distinguish between the replacing
1892 blocks and the block to be replaced. The block to be replaced will have a value of "REP"
1893 in this field. The replacing block value will be null.

1894
1895 • Expiry Date - required for tCERs and ICERs in all transaction types.
1896

1897 The following fields are never provided in the Transaction Unit Block for Kyoto-only transactions:
1898

- 1899 • Supplemental Unit Type
- 1900
- 1901 • Transferring Registry Account Type
- 1902
- 1903 • Transferring Registry Account Identifier
- 1904
- 1905 • Acquiring Registry Account Type
- 1906
- 1907 • Acquiring Registry Account Identifier
- 1908
- 1909 • Year in Commitment Period
- 1910
- 1911 • Installation Identifier
- 1912

1913 1.5 General Notes about each Kyoto Protocol Transaction Type

1914

1915 This section summarizes the rules articulated above for each transaction type:
1916

- 1917 • Issuance - Transaction Type 1. In a proposed Issuance transaction, the registry that is
1918 the proposing registry is identified in the transferring registry code data element. The
1919 registry and account type that receives the issuance of units ~~should~~**must** be listed in the
1920 acquiring registry and the acquiring account type fields. The acquiring Account Identifier
1921 must be left null for Kyoto-only transactions because for Kyoto transactions the account
1922 identifier is only used for cancellation, replacement and retirement accounts and **you**
1923 ~~cannot~~**it is not possible to** issue into those account types. The transferring account type,
1924 transferring Account Identifier and Notification ID must be null for all issuance
1925 transactions. The unit blocks will be completed as appropriate for their characteristics.
1926
- 1927 • Conversion - Transaction Type 2. The transferring registry code and transferring account
1928 type identify the holder of the units for conversion. The acquiring registry code will be the
1929 same value as the transferring registry code. The remaining acquiring registry fields and
1930 the Notification ID will be null. In the Transaction Unit Block fields, the unit type code will
1931 be the proposed ERU current unit type (code 3 or 4). The track and project identifier
1932 fields are required for ERUs and therefore for Conversion transactions. If the unit was
1933 previously an RMU, the LULUCF Activity Code is also required.
1934
- 1935 • External Transfer - Transaction Type 3. In External transactions the transferring registry,
1936 acquiring registry, transferring account type, acquiring account type, transferring account
1937 identifier and acquiring account identifier are required. The Notification ID will be null
1938 unless the transaction is to the CDM registry for **excess issuance** cancellation. ~~You~~
1939 ~~cannot~~**It is not possible to** "retire" units to another registry using an External transaction.
1940 The unit blocks will be completed as appropriate for their characteristics.
1941
- 1942 • Cancellation - Transaction Type 4. The transferring registry code and transferring
1943 account type describe the holder of the units prior to cancellation. The acquiring registry
1944 code, acquiring account type, and acquiring account identifier will describe the
1945 cancellation account. The Notification ID will be null ~~unless the for voluntary~~
1946 ~~cancellations. is in response to a specific-~~ **The Notification ID is required for cancellations**
1947 **resulting from the impending expiry of tCERs or ICERs, from non-compliance**

- 1948 | **cancellations, net source cancellations or cancellations related to the non-submission of a**
 1949 | **certification report.** The unit blocks will be completed as appropriate for their
 1950 | characteristics.
 1951 |
 1952 | • Retirement - Transaction Type 5. The transferring registry code and transferring account
 1953 | type describe the holder of the units prior to retirement. The acquiring registry code,
 1954 | acquiring account type, and acquiring account identifier will describe the retirement
 1955 | account. The Notification ID will be null. The unit blocks will be completed as appropriate
 1956 | for their characteristics.
 1957 |
 1958 | • Replacement - Transaction Type 6. The transferring registry code and transferring
 1959 | account type describe the holder of the replacing units prior to the transaction. The
 1960 | acquiring registry, acquiring account type and acquiring account Identifier describe the
 1961 | replacement account receiving the units. The Notification ID may be populated if this
 1962 | replacement is in response to a notification due to reversal of storage, **or lack non-**
 1963 | **submission** of a certification report, **or the impending expiry of a tCER or ICER.** If the
 1964 | replacement is not for these reasons, it will be null. The unit blocks listed first represent
 1965 | the units being transferred to the replacement account. After all these blocks are listed,
 1966 | the blocks that are being replaced are listed. The blocks being replaced are designated
 1967 | by a block role of "REP." (The block role of the replacing blocks will be null.) The
 1968 | remaining characteristics of the unit blocks (both replacing and replaced) will be
 1969 | completed as appropriate to their characteristics.
 1970 |
 1971 | • Carry-over - Transaction Type 7. The transferring registry code and transferring account
 1972 | type describe the holder of the units for carry-over. The acquiring registry code will be the
 1973 | same value as the transferring registry code. The remaining acquiring registry fields **and**
 1974 | **the Notification ID** will be null. **A Notification ID must be provided.** In the Unit Block fields,
 1975 | the Applicable Commitment Period will be the value of the new Applicable Commitment
 1976 | Period after the carry-over is completed. The remaining characteristics of the unit blocks
 1977 | will be completed as appropriate to their characteristics.
 1978 |
 1979 | • Expiry Date Change - Transaction Type 8. The transferring registry code and transferring
 1980 | account type describe the holder of the units in the transaction. The acquiring registry
 1981 | code will be the same value as the transferring registry code. The remaining acquiring
 1982 | registry fields and the Notification ID will be null. In the Unit Block fields, the Expiry Date
 1983 | must be the value of the new expiry date after the transaction is completed. The
 1984 | remaining fields of the unit blocks will be completed as appropriate to their characteristics.
 1985 |

1986 | 2. **Transaction Examples**

1987 |
 1988 | The following **transaction** examples provide guidance for which optional parameters are expected
 1989 | under which circumstances for each transaction type.

1990 |
 1991 | Note that if a parameter is specified as "not supplied," a value is not expected to be passed in the
 1992 | given scenario and the element may be omitted. If it is required in certain circumstances (for
 1993 | certain unit types, for example), it should be considered to be "not supplied" when the criteria is
 1994 | not met.
 1995 |

1996 | Although a transaction may involve as many unit blocks as desired, these examples only involve
 1997 | one or two for simplicity.
 1998 |

1999
2000
2001
2002
2003
2004
2005

2.1 AcceptProposal

Figure L4: Transaction Type 1-00 (Issuance of AAUs)

This example issues 1000 units to holding account(s) in Japan's registry. Note that there is only acquiring registry information.

ProposalRequest	Type	WSDL	KP Requirement	KP Sample Data	EU Requirement
from	string	required	required	JP	Not applicable
to	string	required	required	ITL	
major Version	int	required	required	1	
minor Version	int	required	required	1	
proposed Transaction	Proposal Transaction	required	required		
transaction Identifier	string	required	required	JP1	
transaction Type	int	required	required	1	
supp Transaction Type	int	optional	not supplied		
transferring Registry Code	string	required	required	JP	
transferring Registry Account Type	int	optional	not supplied		
transferring Registry Account Identifier	long	optional	not supplied		
acquiring Registry Code	string	required	required	JP	
acquiring Registry Account Type	int	optional	required	100	
acquiring Registry Account Identifier	long	optional	not supplied		
notification Identifier	long	optional	not supplied		
proposal Unit Blocks	Transaction Unit Block[]	required	required		
unit Serial Block Start	long	required	required	1001	
unit Serial Block End	long	required	required	2000	
originating Party-Registry Code	string	required	required	JP	
unit Type	int	required	required	1	
supp Unit Type	int	optional	not supplied		
original Commit Period	int	required	required	1	
applicable Commit Period	int	required	required	1	
LULUCF Activity	int	optional	required for RMUs and for ICERs/tCERs issued by CDM		
project Identifier	int	optional	required for CERs, ICERs, and tCERs issued by CDM		
track	int	optional	not supplied		
block Role	string	optional	not supplied		
transferring Registry Account Type	int	optional	not supplied		
transferring Registry Account Identifier	long	optional	not supplied		
acquiring Registry Account Type	int	optional	not supplied		
acquiring Registry Account Identifier	long	optional	not supplied		
year in Commitment Period	int	optional	not supplied		
installation Identifier	long	optional	not supplied		
expiry Date	date	optional	required for ICERs/tCERs issued by CDM		

2006
2007
2008
2009
2010
2011
2012

**Figure L5: Transaction Type 1
Supp Transaction Type 51
(Issue of Allowances 2005-2007)**

This example issues 1000 allowances to a national holding account in Belgium’s registry. Note that there is only acquiring registry information.

ProposalRequest	Type	WSDL	KP Requirement	EU Requirement	EU Sample Data
from	string	required	Not applicable	required	BE
to	string	required		required	CTL
major Version	int	required		required	1
minor Version	int	required		required	1
proposed Transaction	Proposal Transaction	required		required	
transaction Identifier	string	required		required	BE1
transaction Type	int	required		required	1
supp Transaction Type	int	optional		required	51
transferring Registry Code	string	required		required	BE
transferring Registry Account Type	int	optional		optional	100
transferring Registry Account Identifier	long	optional		optional	1
acquiring Registry Code	string	required		required	BE
acquiring Registry Account Type	int	optional		optional	100
acquiring Registry Account Identifier	long	optional		optional	1
notification Identifier	long	optional		not supplied	
proposal Unit Blocks	Transaction Unit Block[]	required		required	
unit Serial Block Start	long	required		required	1001
unit Serial Block End	long	required		required	2000
originating Party Code	string	required		required	BE
unit Type	int	required		required	0
supp Unit Type	int	optional		required	2
original Commit Period	int	required		required	0
applicable Commit Period	int	required		required	0
LULUCF Activity	int	optional		not supplied	
project Identifier	int	optional		not supplied	
track	int	optional		not supplied	
block Role	string	optional		not supplied	
transferring Registry Account Type	int	optional		optional	
transferring Registry Account Identifier	long	optional		optional	
acquiring Registry Account Type	int	optional		optional	
acquiring Registry Account Identifier	long	optional		optional	
year in Commitment Period	int	optional	not supplied		
installation Identifier	long	optional	not supplied		
expiry Date	date	optional	not supplied		

2013

2014
2015
2016
2017
2018
2019
2020

**Figure L6: Transaction Type 1
Supp Transaction Type 54
(Issue of Force Majeure Allowances)**

This example issues 1000 allowances to a national holding account in Belgium’s registry for installation 123 in 2005. Note that there is only acquiring registry information.

ProposalRequest	Type	WSDL	KP Requirement	EU Requirement	EU SampleData
from	string	required	Not applicable	required	BE
to	string	required		required	CTL
major Version	int	required		required	1
minor Version	int	required		required	1
proposed Transaction	Proposal Transaction	required		required	
transaction Identifier	string	required		required	BE1
transaction Type	int	required		required	1
supp Transaction Type	int	optional		required	54
transferring Registry Code	string	required		required	BE
transferring Registry Account Type	int	optional		optional	
transferring Registry Account Identifier	long	optional		optional	
acquiring Registry Code	string	required		required	BE
acquiring Registry Account Type	int	optional		optional	
acquiring Registry Account Identifier	long	optional		optional	
notification Identifier	long	optional		not supplied	
proposal Unit Blocks	Transaction Unit Block[]	required		required	
unit Serial Block Start	long	required		required	1001
unit Serial Block End	long	required		required	2000
originating Registry Party Code	string	required		required	BE
unit Type	int	required		required	0
supp Unit Type	int	optional		not supplied	3
original Commit Period	int	required		required	0
applicable Commit Period	int	required		required	0
LULUCF Activity	int	optional		not supplied	
project Identifier	int	optional		not supplied	
track	int	optional		not supplied	
block Role	string	optional		not supplied	
transferring Registry Account Type	int	optional		not supplied	
transferring Registry Account Identifier	long	optional		not supplied	
acquiring Registry Account Type	int	optional		optional	100
acquiring Registry Account Identifier	long	optional		optional	1
year in Commitment Period	int	optional	required	2005	
installation Identifier	long	optional	required	123	
expiry Date	date	optional	not supplied		

2021

2022
2023
2024
2025
2026
2027

**Figure L7: Transaction Type 2
(Conversion of AAUs and RMUs to ERUs)**

This example converts 100 RMUs into ERUs. Note that conversion requires a Project Identifier and track. Since RMUs are being converted, LULUCF activity code is also required.

ProposalRequest	Type	WSDL	KP Requirement	KP Sample Data	EU Requirement	EU Sample
from	string	required	required	CL		
to	string	required	required	ITL		
major Version	int	required	required	1		
minor Version	int	required	required	1		
proposed Transaction	Proposal Transaction	required	required			
transaction Identifier	string	required	required	CL101		
transaction Type	int	required	required	2		
supp Transaction Type	int	optional	not supplied			
transferring Registry Code	string	required	required	CL		
transferring Registry Account Type	int	optional	required	100		
transferring Registry Account Identifier	long	optional	not supplied			
acquiring Registry Code	string	required	required	CL		
acquiring Registry Account Type	int	optional	not supplied			
acquiring Registry Account Identifier	long	optional	not supplied			
notification Identifier	long	optional	not supplied			
proposal Unit Blocks	Transaction Unit Block[]	required	required			
unit Serial Block Start	long	required	required	301		
unit Serial Block End	long	required	required	400		
originating Registry Party Code	string	required	required	CL		
unit Type	int	required	required. Value will be unit type after conversion (3 or 4).	4		
supp Unit Type	int	optional	not supplied			
original Commit Period	int	required	required	1		
applicable Commit Period	int	required	required	1		
LULUCF Activity	int	optional	required if converting RMUs	1		
project Identifier	int	optional	required	5		
track	int	optional	required	2		
block Role	string	optional	not supplied			
transferring Registry Account Type	int	optional	not supplied			
transferring Registry Account Identifier	long	optional	not supplied			
acquiring Registry Account Type	int	optional	not supplied			
acquiring Registry Account Identifier	long	optional	not supplied			
year in Commitment Period	int	optional	not supplied			
installation Identifier	long	optional	not supplied			
expiry Date	date	optional	not supplied			

2028
2029
2030
2031
2032
2033

**Figure L8: Transaction Type 3
(External Transfer of AAUs)**

This example transfers 35 AAUs from a holding account in one registry to a holding account in another registry.

ProposalRequest	Type	WSDL	KP Requirement	KP Sample Data	EU Requirement	EU Sample Data
from	string	required	required	AR	required	BE
to	string	required	required	ITL	required	CTL
major Version	int	required	required	1	required	1
minor Version	int	required	required	1	required	1
proposed Transaction	Proposal Transaction	required	required		required	
transaction Identifier	string	required	required	AR29	required	BE29
transaction Type	int	required	required	3	required	3
supp Transaction Type	int	optional	not supplied		not supplied	
transferring Registry Code	string	required	required	AR	required	BE
transferring Registry Account Type	int	optional	required	100	optional	120
transferring Registry Account Identifier	long	optional	required	50	optional	12
acquiring Registry Code	string	optional	required	PY	required	FR
acquiring Registry Account Type	int	optional	required	100	optional	120
acquiring Registry Account Identifier	long	optional	not supplied		optional	45
notification Identifier	long	optional	not supplied		not supplied	
proposal Unit Blocks	Transaction Unit Block[]	required	required		required	
unit Serial Block Start	long	required	required	601	required	601
unit Serial Block End	long	required	required	635	required	635
originating Registry Party Code	string	required	required	AR	required	BE
unit Type	int	required	required	1	required	1
supp Unit Type	int	optional	not supplied		required	1
original Commit Period	int	required	required	1	required	1
applicable Commit Period	int	required	required	1	required	1
LULUCF Activity	int	optional	required for RMUs, ERUs converted from RMUs, ICERs and tCERs		required for RMUs, ERUs converted from RMUs, ICERs and tCERs	
project Identifier	int	optional	required for ERUs, CERs, ICERs and tCERs		required for ERUs, CERs, ICERs and tCERs	
track	int	optional	required for ERUs		required for ERUs	
block Role	string	optional	not supplied		not supplied	
transferring Registry Account Type	int	optional	not supplied		optional	
transferring Registry Account Identifier	long	optional	not supplied		optional	

(cont.)

**Figure L8: Transaction Type 3
(External Transfer of AAUs) (cont.)**

ProposalRequest	Type	WSDL	KP Requirement	KP Sample Data	EU Requirement	EU Sample Data
acquiring Registry Account Type	int	optional	not supplied		optional	
acquiring Registry Account Identifier	long	optional	not supplied		optional	
year in Commitment Period	int	optional	not supplied		not supplied	
installation Identifier	long	optional	not supplied		not supplied	
expiry Date	date	optional	required for ICERs, tCERs		required for ICERs, tCERs	

2034
2035
2036
2037
2038
2039
2040
2041
2042

**Figure L9: Transaction Type 3
Supp Transaction Type 21
(External Transfer 2005-2007)**

This example transfers 35 allowances from a holding account in one registry to a holding account in another registry.

ProposalRequest	Type	WSDL	KP Requirement	EU Requirement	EU Sample Data
from	String	required	Not applicable	required	BE
to	String	required		required	CTL
major Version	Int	required		required	1
minor Version	Int	required		required	1
proposed Transaction	Proposal Transaction	required		required	
transaction Identifier	String	required		required	BE29
transaction Type	Int	required		required	3
supp Transaction Type	Int	optional		required	21
transferring Registry Code	String	required		required	BE
transferring Registry Account Type	Int	optional		optional	120
transferring Registry Account Identifier	long	optional		optional	56
acquiring Registry Code	string	required		required	FR
acquiring Registry Account Type	Int	optional		optional	120
acquiring Registry Account Identifier	Long	optional		optional	135
notification Identifier	long	optional		not supplied	
proposal Unit Blocks	Transaction Unit Block[]	required		required	
unit Serial Block Start	long	required		required	601
unit Serial Block End	long	required		required	635
originating Registry Party Code	string	required		required	BE
unit Type	int	required		required	0
supp Unit Type	int	optional	required	2	
original Commit Period	int	required	required	0	
applicable Commit Period	int	required	required	0	

(cont.)

2043

**Figure L9: Transaction Type 3
 Supp Transaction Type 21
 (External Transfer 2005-2007) (cont.)**

<u>ProposalRequest</u>	Type	WSDL	KP Requirement	EU Requirement	EU Sample Data
LULUCF Activity	int	optional		required for RMUs, ERUs converted from RMUs, ICERs and tCERs	
project Identifier	int	optional		required for ERUs, CERs, ICERs and tCERs	
track	int	optional		required for ERUs	
block Role	string	optional		not supplied	
transferring Registry Account Type	int	optional		optional	
transferring Registry Account Identifier	long	optional		optional	
acquiring Registry Account Type	int	optional		optional	
acquiring Registry Account Identifier	long	optional		optional	
year in Commitment Period	int	optional		not supplied	
installation Identifier	long	optional		not supplied	
expiry Date	date	optional	required for ICERs, tCERs		

2044
 2045
 2046
 2047
 2048
 2049
 2050

**Figure L10: Transaction Type 4
 (Cancellation of AAUs)**

This example transfers 55 AAUs to a voluntary cancellation account. Note that since the acquiring account is a cancellation account, the Kyoto Protocol requires that the account identifier be specified.

ProposalRequest	Type	WSDL	KP Requirement	KP Sample Data	EU Requirement
from	string	required	required	CA	Not applicable
to	string	required	required	ITL	
major Version	int	required	required	1	
minor Version	int	required	required	1	
proposed Transaction	Proposal Transaction	required	required		
transaction Identifier	string	required	required	CA101	
transaction Type	int	required	required	4	
supp Transaction Type	int	optional	not supplied		
transferring Registry Code	string	required	required	CA	
transferring Registry Account Type	int	optional	required	100	
transferring Registry Account Identifier	long	optional	not supplied		
acquiring Registry Code	string	required	required	CA	
acquiring Registry Account Type	int	optional	required	230	
acquiring Registry Account Identifier	long	optional	required	43	
notification Identifier	long	optional	not supplied		
proposal Unit Blocks	Transaction Unit Block[]	required	required		
unit Serial Block Start	long	required	required	236	
unit Serial Block End	long	required	required	290	
originating Registry Party Code	string	required	required	CA	
unit Type	int	required	required	1	
supp Unit Type	int	optional	not supplied		
original Commit Period	int	required	required	1	
applicable Commit Period	int	required	required	1	
LULUCF Activity	int	optional	required for RMUs, ERUs converted from RMUs, ICERs and tCERs		
project Identifier	int	optional	required for ERUs, CERs, ICERs and tCERs		
track	int	optional	required for ERUs		
block Role	string	optional	not supplied		
transferring Registry Account Type	int	optional	not supplied		
transferring Registry Account Identifier	long	optional	not supplied		
acquiring Registry Account Type	int	optional	not supplied		
acquiring Registry Account Identifier	long	optional	not supplied		
year in Commitment Period	int	optional	not supplied		
installation Identifier	long	optional	not supplied		
expiry Date	date	optional	required for ICERs, tCERs		

2051
2052
2053
2054

**Figure L11: Transaction Type 4
Supp Transaction Type 3
(Retirement 2005-2007)**

ProposalRequest	Type	WSDL	KP Requirement	EU Requirement	EU Sample Data
from	string	required	Not applicable	required	BE
to	string	required		required	CTL
major Version	int	required		required	1
minor Version	int	required		required	1
proposed Transaction	Proposal Transaction	required		required	
transaction Identifier	string	required		required	BE29
transaction Type	int	required		required	4
supp Transaction Type	int	optional		required	3
transferring Registry Code	string	required		required	BE
transferring Registry Account Type	int	optional		optional	
transferring Registry Account Identifier	long	optional		optional	
acquiring Registry Code	string	required		required	BE
acquiring Registry Account Type	int	optional		optional	
acquiring Registry Account Identifier	long	optional		optional	
notification Identifier	long	optional		not supplied	
proposal Unit Blocks	Transaction Unit Block[]	required		required	
unit Serial Block Start	long	required		required	236
unit Serial Block End	long	required		required	290
originating Registry Party Code	string	required		required	BE
unit Type	int	required		required	0
supp Unit Type	int	optional		required	2
original Commit Period	int	required		required	0
applicable Commit Period	int	required		required	0
LULUCF Activity	int	optional		required for RMUs, ERUs converted from RMUs, ICERs and tCERs	
project Identifier	int	optional		required for ERUs, CERs, ICERs and tCERs	
track	int	optional		required for ERUs	
block Role	string	optional		not supplied	
transferring Registry Account Type	int	optional		optional	100
transferring Registry Account Identifier	long	optional		optional	34
acquiring Registry Account Type	int	optional		optional	230
acquiring Registry Account Identifier	long	optional	optional	43	
year in Commitment Period	int	optional	not supplied		
installation Identifier	long	optional	not supplied		
expiry Date	date	optional	required for ICERs, tCERs		

2055

2056
2057
2058
2059
2060
2061
2062

**Figure L12: Transaction Type 5
(Retirement 2008-2012)**

This Kyoto example retires 500 tCERs held by a holding account in the Bolivian registry. Note that since the acquiring account is a retirement account, the Kyoto Protocol requires the account identifier to be specified.

ProposalRequest	Type	WSDL	KP Requirement	KP Sample Data	EU Requirement	EU Sample Data
from	string	required	required	BO	required	BE
to	string	required	required	ITL	required	CTL
major Version	int	required	required	1	required	1
minor Version	int	required	required	1	required	1
proposed Transaction	Proposal Transaction	required	required		required	
transaction Identifier	string	required	required	BO243	required	BE101
transaction Type	int	required	required	5	required	5
supp Transaction Type	int	optional	not supplied		not supplied	
transferring Registry Code	string	required	required	BO	required	BE
transferring Registry Account Type	int	optional	required	100	optional	100
transferring Registry Account Identifier	long	optional	not supplied		optional	12
acquiring Registry Code	string	required	required	BO	required	BE
acquiring Registry Account Type	int	optional	required	300	optional	300
acquiring Registry Account Identifier	long	optional	required	41	optional	41
notification Identifier	long	optional	not supplied		not supplied	
proposal Unit Blocks	Transaction Unit Block[]	required	required		required	
unit Serial Block Start	long	required	required	1001	required	1001
unit Serial Block End	long	required	required	1500	required	1500
originating Registry Party Code	string	required	required	BO	required	BE
unit Type	int	required	required	6	required	1
supp Unit Type	int	optional	not supplied		not supplied	
original Commit Period	int	required	required	1	required	1
applicable Commit Period	int	required	required	1	required	1
LULUCF Activity	int	optional	required for RMUs, ERUs converted from RMUs, ICERs and tCERs	1		
project Identifier	int	optional	required for ERUs, CERs, ICERs and tCERs	5	optional	
track	int	optional	required for ERUs		optional	
block Role	string	optional	not supplied		not supplied	
transferring Registry Account Type	int	optional	not supplied		optional	
transferring Registry Account Identifier	long	optional	not supplied		optional	
acquiring Registry Account Type	int	optional	not supplied		optional	
acquiring Registry Account Identifier	long	optional	not supplied		optional	

(cont.)

**Figure L12: Transaction Type 5
(Retirement 2008-2012) (cont.)**

<u>ProposalRequest</u>	Type	WSDL	KP Requirement	KP Sample Data	EU Requirement	EU Sample Data
year in Commitment Period	int	optional	not supplied		not supplied	
installation Identifier	long	optional	not supplied		not supplied	
expiry Date	date	optional	required for ICERs, tCERs	2017-12-31	not supplied	

2063
2064
2065
2066
2067
2068
2069
2070
2071

**Figure L13: Transaction Type 6
(Replacement of ICERs)**

This example replaces 500 ICERs with 500 AAUs. Note that the replacement blocks (the AAUs) are listed first, and that the blocks being replaced (the ICERs) are listed last and indicated by a block role of 'REP.'

<u>ProposalRequest</u>	Type	WSDL	KP Requirement	KP Sample Data	EU Requirement
from	string	required	required	BO	Not applicable
to	string	required	required	ITL	
major Version	int	required	required	1	
minor Version	int	required	required	1	
proposed Transaction	Proposal Transaction	required	required		
transaction Identifier	string	required	required	BO244	
transaction Type	int	required	required	6	
supp Transaction Type	int	optional	not supplied		
transferring Registry Code	string	required	required	BO	
transferring Registry Account Type	int	optional	required	100	
transferring Registry Account Identifier	long	optional	not supplied		
acquiring Registry Code	string	required	required	BO	
acquiring Registry Account Type	int	optional	required	422	
acquiring Registry Account Identifier	long	optional	not supplied		
notification Identifier	long	optional	required if prompted by non-submission of certification, or -by reversal of storage, or by pending expiration	687	
proposal Unit Blocks	Transaction Unit Block[]	required	required		
First Block(s) – Replacing Units					
unit Serial Block Start	long	required	required	1	
unit Serial Block End	long	required	required	500	
originating Registry Party Code	string	required	required	BO	
unit Type	int	required	required	1	
supp Unit Type	int	optional	not supplied		
original Commit Period	int	required	required	1	
applicable Commit Period	int	required	required	1	

(cont.)

**Figure L13: Transaction Type 6
(Replacement of ICERs) (cont.)**

ProposalRequest	Type	WSDL	KP Requirement	KP Sample Data	EU Requirement
LULUCF Activity	int	optional	required for RMUs, ERUs converted from RMUs, ICERs and tCERs		Not applicable
project Identifier	int	optional	required for ERUs, CERs, ICERs and tCERs		
track	int	optional	required for ERUs		
block Role	string	optional	not supplied		
transferring Registry Account Type	int	optional	not supplied		
transferring Registry Account Identifier	long	optional	not supplied		
acquiring Registry Account Type	int	optional	not supplied		
acquiring Registry Account Identifier	long	optional	not supplied		
year in Commitment Period	int	optional	not supplied		
installation Identifier	long	optional	not supplied		
expiry Date	date	optional	required for ICERs and tCERs		
Last Block(s) – Units to be replaced					
unit Serial Block Start	long	required	required	1001	
unit Serial Block End	long	required	required	1500	
originating Registry Party Code	string	required	required	BO	
unit Type	int	required	required	7	
supp Unit Type	int	optional	not supplied		
original Commit Period	int	required	required	1	
applicable Commit Period	int	required	required	1	
LULUCF Activity	int	optional	required for RMUs, ERUs converted from RMUs, ICERs and tCERs	1	
project Identifier	int	optional	required for ERUs, CERs, ICERs and tCERs	5	
track	int	optional	required for ERUs		
block Role	string	optional	required	REP	
transferring Registry Account Type	int	optional	not supplied		
transferring Registry Account Identifier	long	optional	not supplied		
acquiring Registry Account Type	int	optional	not supplied		
acquiring Registry Account Identifier	long	optional	not supplied		
year in Commitment Period	int	optional	not supplied		
installation Identifier	long	optional	not supplied		
expiry Date	date	optional	required for ICERs and tCERs	2028-12-31	

2072

2073
2074
2075
2076
2077
2078
2079
2080
2081

**Figure L14: Transaction Type 7
(Carry-over)**

This example carries over 300 AAUs in a New Zealand holding account into the second commitment period. Note that since only one account is involved, no acquiring account information is specified. Also note that the value specified for the Applicable Commitment Period for the block(s) is the new commitment period; aside from this, the unit block information is unchanged.

ProposalRequest	Type	WSDL	KP Requirement	KP Sample Data	EU Requirement
from	string	required	required	NZ	Not applicable
to	string	required	required	ITL	
major Version	int	required	required	1	
minor Version	int	required	required	1	
proposed Transaction	Proposal Transaction	required	required		
transaction Identifier	string	required	required	NZ624	
transaction Type	int	required	required	7	
supp Transaction Type	int	optional	not supplied		
transferring Registry Code	string	required	required	NZ	
transferring Registry Account Type	int	optional	required	100	
transferring Registry Account Identifier	long	optional	not supplied		
acquiring Registry Code	string	required	required	NZ	
acquiring Registry Account Type	int	optional	not supplied		
acquiring Registry Account Identifier	long	optional	not supplied		
notification Identifier	int	optional	not supplied required	338	
proposal Unit Blocks	Transaction Unit Block[]	required	required		
unit Serial Block Start	long	required	required	1	
unit Serial Block End	long	required	required	300	
originating Registry Party Code	string	required	required	NZ	
unit Type	int	required	required	1	
supp Unit Type	int	optional	not supplied		
original Commit Period	int	required	required	1	
applicable Commit Period	int	required	required. Value is new commitment period	2	
LULUCF Activity	int	optional	not supplied (unit types associated with LULUCFs are not eligible for carryover)		
project Identifier	int	optional	required for ERUs and CERs (only ERUs converted from AAUs are eligible for carryover)		
track	int	optional	required for ERUs (only ERUs converted from AAUs are eligible for carryover)		
block Role	string	optional	not supplied		

(cont.)

**Figure L14: Transaction Type 7
(Carry-over) (cont.)**

ProposalRequest	Type	WSDL	KP Requirement	KP Sample Data	EU Requirement
transferring Registry Account Type	int	optional	not supplied		Not applicable
transferring Registry Account Identifier	long	optional	not supplied		
acquiring Registry Account Type	int	optional	not supplied		
acquiring Registry Account Identifier	long	optional	not supplied		
year in Commitment Period	int	optional	not supplied		
installation Identifier	long	optional	not supplied		
expiry Date	date	optional	not supplied (ICERs and tCERs are not eligible for carryover)		

2082

2083
 2084
 2085
 2086
 2087
 2088

**Figure L15: Transaction Type 8
 (Expiry Date Change)**

This example extends the Expiry Date on a block of tCERs by one year. Note that the Expiry Date specified is the new date; aside from this, the unit block information is unchanged.

ProposalRequest	Type	WSDL	KP Requirement	KP Sample Data	EU Requirement
from	string	required	required	BO	Not applicable
to	string	required	required	ITL	
major Version	int	required	required	1	
minor Version	int	required	required	1	
proposed Transaction	Proposal Transaction	required	required		
transaction Identifier	string	required	required	BO243	
transaction Type	int	required	required	8	
supp Transaction Type	int	optional	not supplied		
transferring Registry Code	string	required	required	BO	
transferring Registry Account Type	int	optional	required	100	
transferring Registry Account Identifier	long	optional	not supplied		
acquiring Registry Code	string	required	required	BO	
acquiring Registry Account Type	int	optional	not supplied		
acquiring Registry Account Identifier	long	optional	not supplied		
notification Identifier	long	optional	not supplied		
proposal Unit Blocks	Transaction Unit Block[]	required	required		
unit Serial Block Start	long	required	required	2001	
unit Serial Block End	long	required	required	2500	
originating Registry Party Code	string	required	required	BO	
unit Type	int	required	required	6	
supp Unit Type	int	optional	not supplied		
original Commit Period	int	required	required	1	
applicable Commit Period	int	required	required	1	
LULUCF Activity	int	optional	required (units are ICERs or tCERs)	1	
project Identifier	int	optional	required (units are ICERs or tCERs)	5	
track	int	optional	not supplied		
block Role	string	optional	not supplied		
transferring Registry Account Type	int	optional	not supplied		
transferring Registry Account Identifier	long	optional	not supplied		
acquiring Registry Account Type	int	optional	not supplied		
acquiring Registry Account Identifier	long	optional	not supplied		
year in Commitment Period	int	optional	not supplied		
installation Identifier	long	optional	not supplied		
expiry Date	date	optional	required. Value is new Expiry Date	2018-12-31	

2089
2090
2091
2092
2093
2094
2095

**Figure L16: Transaction Type 10
Supp Transaction Type 0
(Internal Transfer)**

This example transfers 1000 allowances from an operator holding account to another operator holding account in the Belgian registry.

ProposalRequest	Type	WSDL	KP Requirement	EU Requirement	EU Sample Data
from	string	required	Not applicable	required	BE
to	string	required		required	CTL
major Version	int	required		required	1
minor Version	int	required		required	1
proposed Transaction	Proposal Transaction	required		required	
transaction Identifier	string	required		required	BE1
transaction Type	int	required		required	10
supp Transaction Type	int	optional		required	0
transferring Registry Code	string	required		required	BE
transferring Registry Account Type	int	optional		optional	
transferring Registry Account Identifier	long	optional		optional	
acquiring Registry Code	string	required		required	BE
acquiring Registry Account Type	int	optional		optional	
acquiring Registry Account Identifier	long	optional		optional	
notification Identifier	long	optional		not supplied	
proposal Unit Blocks	Transaction Unit Block[]	required		required	
unit Serial Block Start	long	required		required	1001
unit Serial Block End	long	required		required	2000
originating Registry Party Code	string	required		required	BE
unit Type	int	required		required	0
supp Unit Type	int	optional		required	2
original Commit Period	int	required		required	0
applicable Commit Period	int	required		required	0
LULUCF Activity	int	optional		not supplied	
project Identifier	int	optional		not supplied	
track	int	optional		not supplied	
block Role	string	optional		not supplied	
transferring Registry Account Type	int	optional		optional	120
transferring Registry Account Identifier	long	optional		optional	56
acquiring Registry Account Type	int	optional		optional	120
acquiring Registry Account Identifier	long	optional		optional	57
year in Commitment Period	int	optional	not supplied		
installation Identifier	long	optional	not supplied		
expiry Date	date	optional	not supplied		

2096

2097
2098
2099
2100
2101
2102

**Figure L17: Transaction Type 10
Supp Transaction Type 52
(Issue of Allowances 2008-2012)**

This example issues (convert AAUs) 1000 allowances to a national holding account.

ProposalRequest	Type	WSDL	KP Requirement	EU Requirement	EU Sample Data
from	string	required	Not applicable	required	BE
to	string	required		required	CTL
major Version	int	required		required	1
minor Version	int	required		required	1
proposed Transaction	Proposal Transaction	required		required	
transaction Identifier	string	required		required	BE1
transaction Type	int	required		required	10
supp Transaction Type	int	optional		required	52
transferring Registry Code	string	required		required	BE
transferring Registry Account Type	int	optional		optional	
transferring Registry Account Identifier	long	optional		optional	
acquiring Registry Code	string	required		required	BE
acquiring Registry Account Type	int	optional		optional	
acquiring Registry Account Identifier	long	optional		optional	
notification Identifier	long	optional		not supplied	
proposal Unit Blocks	Transaction Unit Block[]	required		required	
unit Serial Block Start	long	required		required	1001
unit Serial Block End	long	required		required	2000
originating Registry Party Code	string	required		required	BE
unit Type	int	required		required	1
supp Unit Type	int	optional		required	1
original Commit Period	int	required		required	1
applicable Commit Period	int	required		required	1
LULUCF Activity	int	optional		not supplied	
project Identifier	int	optional		not supplied	
track	int	optional		not supplied	
block Role	string	optional		not supplied	
transferring Registry Account Type	int	optional		optional	100
transferring Registry Account Identifier	long	optional		optional	1
acquiring Registry Account Type	int	optional		optional	100
acquiring Registry Account Identifier	long	optional		optional	1
year in Commitment Period	int	optional		not supplied	
installation Identifier	long	optional	not supplied		
expiry Date	date	optional	not supplied		

2103

2104
2105
2106
2107
2108
2109

**Figure L18: Transaction Type 10
Supp Transaction Type 53
(Allocation of Allowances 2005-2007)**

This example allocates 1000 allowances to installation 123 for year 2005.

<u>ProposalRequest</u>	Type	WSDL	KP Requirement	EU Requirement	EU Sample Data
from	string	required	Not applicable	required	BE
to	string	required		required	CTL
major Version	int	required		required	1
minor Version	int	required		required	1
proposed Transaction	Proposal Transaction	required		required	
transaction Identifier	string	required		required	BE1
transaction Type	int	required		required	10
supp Transaction Type	int	optional		required	53
transferring Registry Code	string	required		required	BE
transferring Registry Account Type	int	optional		optional	
transferring Registry Account Identifier	long	optional		optional	
acquiring Registry Code	string	required		required	BE
acquiring Registry Account Type	int	optional		optional	
acquiring Registry Account Identifier	long	optional		optional	
notification Identifier	long	optional		not supplied	
proposal Unit Blocks	Transaction Unit Block[]	required		required	
unit Serial Block Start	long	required		required	1001
unit Serial Block End	long	required		required	2000
originating Registry Party Code	string	required		required	BE
unit Type	int	required		required	0
supp Unit Type	int	optional		not supplied	2
original Commit Period	int	required		required	0
applicable Commit Period	int	required		required	0
LULUCF Activity	int	optional		not supplied	
project Identifier	int	optional		not supplied	
track	int	optional		not supplied	
block Role	string	optional		not supplied	
transferring Registry Code	string	optional		not supplied	
transferring Registry Account Type	int	optional		optional	100
transferring Registry Account Identifier	long	optional		optional	1
acquiring Registry Account Type	int	optional		optional	120
acquiring Registry Account Identifier	long	optional		optional	22
year in Commitment Period	int	optional	required	2005	
installation Identifier	long	optional	required	123	
expiry Date	date	optional	not supplied		

2110
2111
2112
2113
2114
2115
2116

**Figure L19: Transaction Type 10
Supp Transaction Type 55
(Correction to allowance)**

This example cancels 1000 allowances for installation 123 following the correction of the NAP for that installation in 2009.

ProposalRequest	Type	WSDL	KP Requirement	EU Requirement	EU Sample Data
from	string	required	Not applicable	required	BE
to	string	required		required	CTL
major Version	int	required		required	1
minor Version	int	required		required	1
proposed Transaction	Proposal Transaction	required		required	
transaction Identifier	string	required		required	BE1
transaction Type	int	required		required	10
supp Transaction Type	int	optional		required	55
transferring Registry Code	string	required		required	BE
transferring Registry Account Type	int	optional		optional	
transferring Registry Account Identifier	long	optional		optional	
acquiring Registry Code	string	required		required	BE
acquiring Registry Account Type	int	optional		optional	
acquiring Registry Account Identifier	long	optional		optional	
notification Identifier	long	optional		not supplied	
proposal Unit Blocks	Transaction Unit Block[]	required		required	
unit Serial Block Start	long	required		required	1001
unit Serial Block End	long	required		required	2000
originating Registry Party Code	string	required		required	BE
unit Type	int	required		required	1
supp Unit Type	int	optional		required	0
original Commit Period	int	required		required	1
applicable Commit Period	int	required		required	1
LULUCF Activity	int	optional		not supplied	
project Identifier	int	optional		not supplied	
track	int	optional		not supplied	
block Role	string	optional		not supplied	
transferring Registry Account Type	int	optional		optional	120
transferring Registry Account Identifier	long	optional		optional	36
acquiring Registry Account Type	int	optional		optional	100
acquiring Registry Account Identifier	long	optional		optional	1
year in Commitment Period	int	optional		required	
installation Identifier	long	optional	required		
expiry Date	date	optional	not supplied		

2117
2118
2119
2120
2121
2122

**Figure L20: Transaction Type 10
Supp Transaction Type 1
(Cancellation of Allowances 2005-2007)**

This example cancels 1000 allowances from account 35 for 2005-2007.

<u>ProposalRequest</u>	Type	WSDL	KP Requirement	EU Requirement	EU Sample Data
from	string	required	Not applicable	required	BE
to	string	required		required	CTL
major Version	int	required		required	1
minor Version	int	required		required	1
proposed Transaction	Proposal Transaction	required		required	
transaction Identifier	string	required		required	BE1
transaction Type	int	required		required	10
supp Transaction Type	int	optional		required	1
transferring Registry Code	string	required		required	BE
transferring Registry Account Type	int	optional		optional	120
transferring Registry Account Identifier	long	optional		optional	35
acquiring Registry Code	string	required		required	BE
acquiring Registry Account Type	int	optional		optional	230
acquiring Registry Account Identifier	long	optional		optional	22
notification Identifier	long	optional		not supplied	
proposal Unit Blocks	Transaction Unit Block[]	required		required	
unit Serial Block Start	long	required		required	1001
unit Serial Block End	long	required		required	2000
originating Registry Party Code	string	required		required	BE
unit Type	int	required		required	0
supp Unit Type	int	optional		not supplied	2
original Commit Period	int	required		required	0
applicable Commit Period	int	required		required	0
LULUCF Activity	int	optional		not supplied	
project Identifier	int	optional		not supplied	
track	int	optional		not supplied	
block Role	string	optional		not supplied	
transferring Registry Account Type	int	optional		optional	
transferring Registry Account Identifier	long	optional		optional	
acquiring Registry Account Type	int	optional		optional	
acquiring Registry Account Identifier	long	optional		optional	
year in Commitment Period	int	optional	not supplied		
installation Identifier	long	optional	not supplied		
expiry Date	date	optional	not supplied		

2123
2124
2125
2126
2127
2128

**Figure L21: Transaction Type 10
Supp Transaction Type 2
(Surrender of Allowances)**

This example surrenders 1000 allowances for installation 123 and year 2005.

ProposalRequest	Type	WSDL	KP Requirement	EU Requirement	EU Sample Data
from	string	required	Not applicable	required	BE
to	string	required		required	CTL
major Version	int	required		required	1
minor Version	int	required		required	1
proposed Transaction	Proposal Transaction	required		required	
transaction Identifier	string	required		required	BE1
transaction Type	int	required		required	10
supp Transaction Type	int	optional		required	2
transferring Registry Code	string	required		required	BE
transferring Registry Account Type	int	optional		optional	
transferring Registry Account Identifier	long	optional		optional	
acquiring Registry Code	string	required		required	BE
acquiring Registry Account Type	int	optional		optional	
acquiring Registry Account Identifier	long	optional		optional	
notification Identifier	long	optional		not supplied	
proposal Unit Blocks	Transaction Unit Block[]	required		required	
unit Serial Block Start	long	required		required	1001
unit Serial Block End	long	required		required	2000
originating Registry Party Code	string	required		required	BE
unit Type	int	required		required	0
supp Unit Type	int	optional		required	2
original Commit Period	int	required		required	0
applicable Commit Period	int	required		required	0
LULUCF Activity	int	optional		not supplied	
project Identifier	int	optional		not supplied	
track	int	optional		not supplied	
block Role	string	optional		not supplied	
transferring Registry Account Type	int	optional		required	120
transferring Registry Account Identifier	long	optional		required	36
acquiring Registry Account Type	int	optional		required	100
acquiring Registry Account Identifier	long	optional		required	1
year in Commitment Period	int	optional		required	2005
installation Identifier	long	optional	required		
expiry Date	date	optional	not supplied		

2129
2130
2131
2132
2133
2134
2135

**Figure L22: Transaction Type 10
Supp Transaction Type 41
(Cancellation and Replacement)**

This example cancels 1000 allowances from an operator holding account and replaces them by 1000 AAUs.

ProposalRequest	Type	WSDL	KP Requirement	EU Requirement	EU Sample Data	
from	string	required	Not applicable	required	BE	
to	string	required		required	CTL	
major Version	int	required		required	1	
minor Version	int	required		required	1	
proposed Transaction	Proposal Transaction	required		required		
transaction Identifier	string	required		required	BE1	
transaction Type	int	required		required	10	
supp Transaction Type	int	optional		required	41	
transferring Registry Code	string	required		required	BE	
transferring Registry Account Type	int	optional		optional		
transferring Registry Account Identifier	long	optional		optional		
acquiring Registry Code	string	required		required	BE	
acquiring Registry Account Type	int	optional		optional		
acquiring Registry Account Identifier	long	optional		optional		
notification Identifier	long	optional		not supplied		
proposal Unit Blocks	Transaction Unit Block[]	required		required		
First Unit Block						
unit Serial Block Start	long	required		required	1001	
unit Serial Block End	long	required		required	2000	
originating Registry Party Code	string	required		required	BE	
unit Type	int	required	required	0		
supp Unit Type	int	optional	required	2		
original Commit Period	int	required	required	0		
applicable Commit Period	int	required	required	0		
LULUCF Activity	int	optional	not supplied			
project Identifier	int	optional	not supplied			
track	int	optional	not supplied			
block Role	string	optional	not supplied			
transferring Registry Account Type	int	optional	required	120		
transferring Registry Account Identifier	long	optional	required	244		
acquiring Registry Account Type	int	optional	required	230		
acquiring Registry Account Identifier	long	optional	required	22		
year in Commitment Period	int	optional	required			
installation Identifier	long	optional	required			
expiry Date	date	optional	not supplied			

(cont.)

**Figure L22: Transaction Type 10
 Supp Transaction Type 41
 (Cancellation and Replacement) (cont.)**

ProposalRequest	Type	WSDL	KP Requirement	EU Requirement	EU Sample Data
Second Unit Block					
unit Serial Block Start	long	required		required	2001
unit Serial Block End	long	required		required	3000
originating Registry Party Code	string	required		required	BE
unit Type	int	required		required	1
supp Unit Type	int	optional		required	1
original Commit Period	int	required		required	1
applicable Commit Period	int	required		required	1
LULUCF Activity	int	optional		not supplied	
project Identifier	int	optional		not supplied	
track	int	optional		not supplied	
block Role	string	optional		not supplied	
transferring Registry Account Type	int	optional		required	100
transferring Registry Account Identifier	long	optional		required	1
acquiring Registry Account Type	int	optional		required	120
acquiring Registry Account Identifier	long	optional		required	244
year in Commitment Period	int	optional		required	
installation Identifier	long	optional		required	
expiry Date	date	optional		not supplied	

2136 **2.2 AcceptNotification**

2137
2138
2139
2140
2141
2142

Figure L23: No Discrepancy Found

In this example, the ITL informs a registry that the transaction it proposed has been reviewed without discrepancy.

NotificationRequest	Type	WSDL	KP Requirement	KP Sample Data	EU Requirement	EU Sample Data
From	string	required	required	ITL	required	CTL
to	string	required	required	JP	required	BE
major Version	int	required	required	1	required	1
minor Version	int	required	required	1	required	1
transaction Identifier	string	required	required	JP243	required	BE1
transaction Status	int	required	required	2	required	2
party Type	int	required	required	1	required	1
evaluation Result	ArrayOf Evaluation Result	required	required		required	
response Code	int	required	required	4000	required	4000
unit Block Identifiers	ArrayOf UnitBlock Identifier	optional	specified when response code is specific to certain unit blocks		specified when response code is specific to certain unit blocks	
unit Serial Block Start	long	required	required when unit blocks are specified		required when unit blocks are specified	
unit Serial Block End	long	required	required when unit blocks are specified		required when unit blocks are specified	
originating RegistryPartyCode	string	required	required when unit blocks are specified		required when unit blocks are specified	

2143
2144

2145
 2146
 2147
 2148

Figure L24: Transaction Completed

In this example, a registry informs the ITL that it has completed the transaction.

NotificationRequest	Type	WSDL	KP Requirement	KP Sample Data	EU Requirement	EU Sample Data
from	string	required	required	JP	required	CTL
to	string	required	required	ITL	required	BE
major Version	int	required	required	1	required	1
minor Version	int	required	required	1	required	1
transaction Identifier	string	required	required	JP243	required	BE1
transaction Status	int	required	required	4	required	4
party Type	int	required	required	1	required	1
evaluation Result	ArrayOf Evaluation Result	required	required		required	
response Code	int	required	required	4000	required	4000
unit Block Identifiers	ArrayOf UnitBlock Identifier	optional	specified when response code is specific to certain unit blocks		specified when response code is specific to certain unit blocks	
unit Serial Block Start	long	required	required when unit blocks are specified		required when unit blocks are specified	
unit Serial Block End	long	required	required when unit blocks are specified		required when unit blocks are specified	
originating Party Registry Code	string	required	required when unit blocks are specified		required when unit blocks are specified	

2149
2150
2151
2152
2153
2154

Figure L25: Discrepancy Found

In this example, the ITL informs a registry that the transaction it proposed has been reviewed, and a discrepancy was found (some of the proposed units currently have a reconciliation inconsistency).

NotificationRequest	Type	WSDL	KP Requirement	KP Sample Data	EU Requirement	EU Sample Data
from	string	required	required	ITL	required	CTL
to	string	required	required	UY	required	BE
major Version	int	required	required	1	required	1
minor Version	int	required	required	1	required	1
transaction Identifier	string	required	required	UY56	required	BE1
transaction Status	int	required	required	3	required	3
party Type	int	required	required	1	required	1
evaluation Result	ArrayOf Evaluation Result	required	required Repeated for each response code returned.		required	
response Code	int	required	required	4004	required	7305
unit Block Identifiers	ArrayOf UnitBlock Identifier	optional	specified when response code is specific to certain unit blocks		specified when response code is specific to certain unit blocks	
unit Serial Block Start	long	required	required when unit blocks are specified	201	required when unit blocks are specified	201
unit Serial Block End	long	required	required when unit blocks are specified	230	required when unit blocks are specified	230
originating Registry Party-Code	string	required	required when unit blocks are specified	UY	required when unit blocks are specified	BE

2155
2156

2157
2158
2159
2160

Figure L26: Transaction Terminated

In this example, a registry informs the ITL that it has terminated the transaction.

NotificationRequest	Type	WSDL	KP Requirement	KP Sample Data	EU Requirement	EU Sample Data
from	string	required	required	UY	required	CTL
to	string	required	required	ITL	required	BE
major Version	int	required	required	1	required	1
minor Version	int	required	required	1	required	1
transaction Identifier	string	required	required	UY56	required	BE1
transaction Status	int	required	required	5	required	5
party Type	int	required	required	1	required	1
evaluation Result	ArrayOf Evaluation Result	required	required		required	
response Code	int	required	required	4000	required	4000
unit Block Identifiers	ArrayOf UnitBlock Identifier	optional	specified when response code is specific to certain unit blocks		specified when response code is specific to certain unit blocks	
unit Serial Block Start	long	required	required when unit blocks are specified		required when unit blocks are specified	
unit Serial Block End	long	required	required when unit blocks are specified		required when unit blocks are specified	
originating Party Registry Party-Code	string	required	required when unit blocks are specified		required when unit blocks are specified	

2161
2162
2163
2164
2165
2166

2.3 Account Management Processes

Figure L27: Create Account Request

CreateAccountRequest	Type	optional / required	EU Sample Data	Comment
from	string	required	BE	
to	string	required	CTL	
correlationID	long	required	7	
majorVersion	int	required	1	
minorVersion	int	required	1	
accounts	CreatedAccount[]	required		
accountType	int	required	120	
accountIdentifier	long	required	456	
identifierInReg	string	required	ACCOUNT1	
commitPeriod	int	required		
installation	CreatedInstallation	optional		
installationIdentifier	long	required	9999999999999999	
permitIdentifier	string	required	XCVXXCV-999	
name	string	required	Installation1	
mainActivityType	int	required	2	
country	string	required	BE	
postalCode	string	required	1200	
city	string	required	Brussels	

(cont.)

Figure L27: Create Account Request (cont.)

CreateAccountRequest	Type	optional / required	EU Sample Data	Comment
Address1	string	required	Avenue Ariane 7	
Address2	string	optional		
ParentCompany	string	optional		
SubsidiaryCompany	string	optional		
EPERIdentification	string	optional		
Latitude	double	optional		
longitude	double	optional		
ContactPeople	CreatedPeople	required		
RelationshipCode	int	required	6	
PersonIdentifier	string	required	ZERZER-123	
FirstName	string	required	Jack	
LastName	string	required	Black	
Country	string	required	BE	
PostalCode	string	required	1000	
City	string	required	Brxelles	
Address1	string	required	Rue Royale, 99	
Address2	string	optional		
PhoneNumber1	string	required	+32-2-9999999	
PhoneNumber2	string	required	+32-2-8888888	
FaxNumber	string	required	+32-2-7777777	
E-Mail	string	required	jb@mlk.be	
People	CreatedPeople	required		
RelationShipCode	int	required	1	
PersonallIdentifier	string	required	Gfds-g	
FirstName	string	required	John	
LastName	string	required	Watson	
Country	string	required	BE	
PostalCode	string	required	1000	
City	string	required	Bruxelles	
Address1	string	required	Rue Neuve, 88	
Address2	string	optional		
PhoneNumber1	string	required	+32-2-1234567	
PhoneNumber2	string	required	+32-2-9876543	
FaxNumber	string	required	+32-2-7539512	
E-Mail	string	required	jw@aaa.be	

2167
2168
2169
2170

Figure L28: Create Account Response

CreateAccountResponse	Type	optional / required	EU Sample Data	Comment
ResultIdentifier	int	required	1	1 if request accepted, 0 if request refused
ResponseCode	int	optional		

2171
2172

Figure L29: Update Account Request

<u>UpdateAccountRequest</u>	Type	optional / required	EU Sample Data	Comment
From	string	required	BE	
To	string	required	CIL	
CorrelationID	long	required	6	
MajorVersion	int	required	1	
MinorVersion	int	required	1	
Accounts	UpdatedAccount[]	required		
AccountIdentifier	long	required	345	
IdentifierInReg	string	optional	MYACCOUNT	
Installation	UpdatedInstallation	optional		
PermitIdentifier	string	optional	XCVXXCV-999	
Name	string	optional	Installation1	
MainActivityType	int	optional	2	
Country	string	optional	BE	
PostalCode	string	optional	1200	
City	string	optional	Brussels	
Address1	string	optional	Avenue Ariane 7	
Address2	string	optional		
ParentCompany	string	optional		
SubsidiaryCompany	string	optional		
EPERIdentification	string	optional		
Latitude	double	optional		
Longitude	double	optional		
ContactPeople	UpdatedPeople	optional		
action	int	required		This is about adding a new or updating an existing person
RelationshipCode	int	required	6	
PersonIdentifier	string	required	ZERZER-123	
FirstName	string	optional	Jack	
LastName	string	optional	Black	
Country	string	optional	BE	
PostalCode	string	optional	1000	
City	string	optional	Bruxelles	
Address1	string	optional	Rue Royale, 99	
Address2	string	optional		
PhoneNumber1	string	optional	+32-2-9999999	
PhoneNumber2	string	optional	+32-2-8888888	
FaxNumber	string	optional	+32-2-7777777	
EMail	string	optional	jb@mlk.be	
People	UpdatedPeople	required		
Action	int	required		This is about adding a new or updating an existing person
RelationShipCode	int	required	1	
PersonalIdentifier	string	required	Gfds-g	
FirstName	string	optional	John	
LastName	string	optional	Watson	
Country	string	optional	BE	
PostalCode	string	optional	1000	
City	string	optional	Bruxelles	
Address1	string	optional	Rue Neuve, 88	
Address2	string	optional		
PhoneNumber1	string	optional	+32-2-1234567	

(cont.)

Figure L29: Update Account Request (cont.)

<u>UpdateAccountRequest</u>	Type	optional / required	EU Sample Data	Comment
PhoneNumber2	string	optional	+32-2-9876543	
FaxNumber	string	optional	+32-2-7539512	
E-Mail	string	optional	jw@aaa.be	

2175
2176
2177
2178

Figure L30: Update Account Response

<u>ProposalRequest</u>	Type	optional / required	EU Sample Data	Comment
ResultIdentifier	int	required	1	1 if request accepted, 0 if request refused
ResponseCode	int	optional		

2179
2180
2181
2182

Figure L31: Close Account Request

<u>CloseAccountRequest</u>	Type	optional / required	EU Sample Data	Comment
From	string	required		
To	string	required		
CorrelationID	long	required	5	
MajorVersion	int	required	1	
MinorVersion	int	required	1	
Accounts	ClosedAccount[]	required		
AccountIdentifier	long	required	234	

2183
2184
2185
2186

Figure L32: Close Account Response

<u>ProposalRequest</u>	Type	optional / required	EU Sample Data	Comment
ResultIdentifier	int	required	1	1 if request accepted, 0 if request refused
ResponseCode	int	optional		

2187
2188
2189
2190

Figure L33: Update Verified Emissions Request

<u>UpdateVerifiedEmissions Request</u>	Type	optional / required	EU Sample Data	Comment
From	string	required		
To	string	required		
CorrelationID	long	required	55	
MajorVersion	int	required	1	
MinorVersion	int	required	1	
VerifiedEmissions	VerifiedEmissions[]	required		
YearInCommitPeriod	int	required	2005	
Installations	InstallationVerified Emission[]	required		
InstallationIdentifier	long	required	123	
VerifiedEmissions	long	required	55555	

2191
2192

2193
2194

Figure L34: Update Verified Emissions Response

<u>UpdateVerifiedEmissionsResponse</u>	Type	optional / required	EU Sample Data	Comment
ResultIdentifier	int	required	1	1 if request accepted, 0 if request refused
ResponseCode	int	optional		

2195
2196
2197
2198

Figure L35: Receive Account Operation Outcome Request

<u>ReceiveAccountOperationOutcomeRequest</u>	Type	optional / required	EU Sample Data	Comment
From	string	required		
To	string	required		
CorrelationID	long	required	OutcomeRequest	
MajorVersion	int	required	1	
MinorVersion	int	required	1	
Outcome	int	required	0	1 if request completed, 0 if request terminated
OutcomeDetails	OutcomeDetail[]	optional		
ResponseCode	int	required	7149	
AccountIdentifier	long	optional	1	
InstallationIdentifier	long	optional	123	

2199
2200
2201
2202

Figure L36: Receive Account Operation Outcome Response

<u>ReceiveAccountOperationOutcomeResponse</u>	Type	optional / required	EU Sample Data	Comment
ResultIdentifier	int	required	1	1 if request completed, 0 if request terminated
ResponseCode	int	optional		

2203
2204
2205
2206
2207
2208
2209
2210
2211
2212
2213
2214
2215
2216
2217
2218
2219
2220
2221
2222

3. Notification Examples

The following notification examples demonstrate the different notification types, and the types of transactions that registries might respond with in order to address the issue. There are also examples of Notification Update messages which might be sent upon fulfillment of a notification requirement or to remind the registry to complete the requirement.

3.1 Net Source Cancellation (Type 1)

This example shows a net source cancellation notification and the subsequent transaction to address the notification. A net source cancellation is the result of LULUCF activities of a Party that have resulted in a net source of emissions. The registry is required to initiate sufficient transfers within 30 days into a Net Source Cancellation Account (Account Type Code 210) and to reference the Notification ID in the transaction. There may be more than one cancellation transaction, but all must reference the Notification ID. Periodically, or once Upon the cancellation required has been fulfilled, the ITL will send a notification update.

2223
2224

Figure L37: Net Source Cancellation Notification

ITLNoticeRequest	Type	WSDL	KP Requirement	KP Sample Data
from	string	required	required	ITL
to	string	required	required	ZZ
major Version	int	required	required	1
minor Version	int	required	required	1
messageContent	string	required	required	The Compliance Committee has found that LULUCF activities have resulted in a net source of emissions. Units must be cancelled within 30 days to offset these emissions.
messageDate	dateTime	required	required	2005-10-30 11:05:34
notificationType	int	required	required	1
notificationIdentifier	long	required	required	331
notificationStatus	int	required	required	1
projectNumber	string	optional	not supplied	
unitType	int	optional	not supplied	
targetValue	long	optional	required for Notification Type 1	500
actionDueDate	date	optional	required	2005-11-30
unitBlockIdentifiers	ArrayOfUnit Block Identifier	optional	not supplied	
unitSerialBlockStart	long	required	not supplied	
unitSerialBlockEnd	long	required	not supplied	
originatingRegistryCode	string	required	not supplied	

2225
2226
2227
2228
2229
2230
2231
2232

The registry initiates a cancellation transaction that references the notification identifier and transfers the specified number of units into the net source cancellation account (Account Type Code 210).

Figure L38: Net Source Cancellation Transaction

ProposalRequest	Type	WSDL	KP Requirement	KP SampleData
from	string	required	required	ZZ
to	string	required	required	ITL
major Version	int	required	required	1
minor Version	int	required	required	1
proposed Transaction	Proposal Transaction	required	required	
transaction Identifier	string	required	required	ZZ101
transaction Type	int	required	required	4
supp Transaction Type	int	optional	not supplied	
transferring Registry Code	string	required	required	ZZ
transferring Registry Account Type	int	optional	required	120
transferring Registry Account Identifier	long	optional	not supplied	
acquiring Registry Code	string	required	required	ZZ

(cont.)

Figure L38: Net Source Cancellation Transaction (cont.)

ProposalRequest	Type	WSDL	KP Requirement	KP Sample Data
acquiring Registry Account Type	int	optional	required to be Account Type 210 for Cancellation in response to Notification Type 1	210
acquiring Registry Account Identifier	long	optional	required for Cancellation	41
notification Identifier	long	optional	required for Cancellation in response to Notification Type 1	331
proposal Unit Blocks	Transaction Unit Block[]	required	required	
unit Serial Block Start	long	required	required	1001
unit Serial Block End	long	required	required	1500
originating Registry Code	string	required	required	ZZ
unit Type	int	required	required	1
supp Unit Type	int	optional	not supplied	
original Commit Period	int	required	required	1
applicable Commit Period	int	required	required	1
LULUCF Activity	int	optional	required for RMUs, ERUs converted from RMUs, ICERs and tCERs	
project Identifier	int	optional	required for ERUs, CERs, ICERs and tCERs	
track	int	optional	required for ERUs	
block Role	string	optional	not supplied	
transferring Registry Account Type	int	optional	not supplied	
transferring Registry Account Identifier	long	optional	not supplied	
acquiring Registry Account Type	int	optional	not supplied	
acquiring Registry Account Identifier	long	optional	not supplied	
year in Commitment Period	int	optional	not supplied	
installation Identifier	long	optional	not supplied	
expiry Date	date	optional	required for ICERs, tCERs	

The ITL sends a notification update indicating the requirement has been fulfilled.

Figure L39: Notification Update (Requirement Fulfilled)

ITLNoticeRequest	Type	WSDL	KP Requirement	KP Sample Data
from	string	required	required	ITL
to	string	required	required	ZZ
major Version	int	required	required	1
minor Version	int	required	required	1
messageContent	string	required	required	The requirement to cancel units due to a Net Source of emissions has been fulfilled.
messageDate	dateTime	required	required	2005-11-14 12:05:34
notificationType	int	required	required	9
notificationIdentifier	long	required	required	331
notificationStatus	int	required	required	3
projectNumber	string	optional	not supplied	

(cont.)

2233
2234
2235
2236
2237
2238

Figure L39: Notification Update (Requirement Fulfilled) (cont.)

ITLNoticeRequest	Type	WSDL	KP Requirement	KP Sample Data
unitType	int	optional	not supplied	
targetValue	long	optional	required for Notification Type 9 with status of 3 "Complete"	0
actionDueDate	date	optional	not supplied	
unitBlockIdentifiers	arrayOfUnitBlockIdentifier	optional	not supplied	
unitSerialBlockStart	long	required	not supplied	
unitSerialBlockEnd	long	required	not supplied	
originatingRegistryCode	string	required	not supplied	

2239
2240
2241
2242
2243
2244
2245
2246
2247
2248
2249
2250
2251
2252
2253

3.2 Non-compliance Cancellation (Type 2)

A Non-compliance Cancellation Notification is sent to a registry when its Party has been found by the Compliance Committee to be in non-compliance with its emissions targets in the previous Commitment Period. The registry is required to cancel within 30 days the number of units specified by the target value in the notification. The units must be valid for the current Commitment Period and must be transferred to a Non-compliance Cancellation Account (Account Type Code 220). The cancellation transaction(s) must reference the original Notification ID. Periodically, or once the cancellation requirement has been fulfilled, the ITL will send a Notification Update.

Figure L40: Non-compliance Cancellation Notification

ITLNoticeRequest	Type	WSDL	KP Requirement	KP Sample Data
from	string	required	required	ITL
to	string	required	required	ZZ
majorVersion	int	required	required	1
minorVersion	int	required	required	1
messageContent	string	required	required	The Compliance Committee has determined that the party in is non-compliance with its emissions target under Articles 3.7 and 3.8 of the Kyoto Protocol. Units must be cancelled in order to bring the party into compliance.
messageDate	dateTime	required	required	2005-10-30 11:05:34
notificationType	int	required	required	2
notificationIdentifier	long	required	required	332
notificationStatus	int	required	required	1
projectNumber	string	optional	not supplied	
unitType	int	optional	not supplied	
targetValue	long	optional	required for Notification Type 2	100
actionDueDate	date	optional	required for Notification Type 2	2005-11-30

(cont.)

Figure L40: Non-compliance Cancellation Notification (cont.)

ITLNoticeRequest	Type	WSDL	KP Requirement	KP Sample Data
unitBlockIdentifiers	ArrayOfUnit Block Identifier	optional	not supplied	
unitSerialBlockStart	long	required	not supplied	
unitSerialBlockEnd	long	required	not supplied	
originatingRegistryCode	String	required	not supplied	

2254
2255
2256
2257
2258
2259
2260

The registry initiates a cancellation transaction to cancel some of the required number of units. The units are transferred to a Non-compliance Cancellation account (Account Type Code 220).

Figure L41: Non-compliance Cancellation Transaction

ProposalRequest	Type	WSDL	KP Requirement	KP Sample Data
from	string	required	required	ZZ
to	string	required	required	ITL
major Version	int	required	required	1
minor Version	int	required	required	1
proposed Transaction	Proposal Transaction	required	required	
transaction Identifier	string	required	required	ZZ1021
transaction Type	int	required	required	4
supp Transaction Type	int	optional	not supplied	
transferring Registry Code	string	required	required	ZZ
transferring Registry Account Type	int	optional	required	120
transferring Registry Account Identifier	long	optional	not supplied	
acquiring Registry Code	string	required	required	ZZ
acquiring Registry Account Type	int	optional	required for Cancellation	220
acquiring Registry Account Identifier	long	optional	required to be Account Type 220 for Cancellation in response to Notification Type 2	42
notification Identifier	long	optional	required for Cancellation in response to Notification Type 2	332
proposal Unit Blocks	Transaction Unit Block[]	required	required	
unit Serial Block Start	long	required	required	1501
unit Serial Block End	long	required	required	1550
originating Registry Code	string	required	required	ZZ
unit Type	int	required	required	1
supp Unit Type	int	optional	not supplied	
original Commit Period	int	required	required	1
applicable Commit Period	int	required	required	1
LULUCF Activity	int	optional	required for RMUs, ERUs converted from RMUs, ICERs and tCERs	
project Identifier	int	optional	required for ERUs, CERs, ICERs and tCERs	
track	int	optional	required for ERUs	
block Role	string	optional	not supplied	
transferring Registry Account Type	int	optional	not supplied	

(cont.)

Figure L41: Non-compliance Cancellation Transaction (cont.)

ProposalRequest	Type	WSDL	KP Requirement	KP Sample Data
transferring Registry Account Identifier	long	optional	not supplied	
acquiring Registry Account Type	int	optional	not supplied	
acquiring Registry Account Identifier	long	optional	not supplied	
year in Commitment Period	int	optional	not supplied	
installation Identifier	long	optional	not supplied	
expiry Date	date	optional	required for ICERs, tCERs	

2261
2262
2263
2264
2265
2266

The ITL sends a notification indicating the progress toward the requirement.

Figure L42: Notification Update (Progress Update)

ITLNoticeRequest	Type	WSDL	KP Requirement	KP Sample Data
from	string	required	required	ITL
to	string	required	required	ZZ
major Version	int	required	required	1
minor Version	int	required	required	1
messageContent	string	required	required	The Compliance Committee has determined that the party in is non-compliance with its emissions target under Articles 3.7 and 3.8 of the Kyoto Protocol. Units must be cancelled in order to bring the party into compliance.
messageDate	dateTime	required	required	2005-11-08 12:05:34
notificationType	int	required	required	9
notificationIdentifier	long	required	required	332
notificationStatus	int	required	required	2
projectNumber	string	optional	not supplied	
unitType	int	optional	not supplied	
targetValue	long	optional	required for Notification Type 9 in response to Notification Type 2	50
actionDueDate	date	optional	required for Notification Type 9 with status of 2 "In Progress"	2005-11-30
unitBlockIdentifiers	ArrayOfUnit Block Identifier	optional	not supplied	
unitSerialBlockStart	long	required	not supplied	
unitSerialBlockEnd	long	required	not supplied	
originatingRegistryCode	string	required	not supplied	

2267
2268
2269
2270

The registry initiates another cancellation transaction to complete the requirement.

2271
2272

Figure L43: Non-compliance Cancellation Transaction

ProposalRequest	Type	WSDL	KP Requirement	KP Sample Data
from	string	required	required	ZZ
to	string	required	required	ITL
major Version	int	required	required	1
minor Version	int	required	required	1
proposed Transaction	Proposal Transaction	required	required	
transaction Identifier	string	required	required	ZZ1022
transaction Type	int	required	required	4
supp Transaction Type	int	optional	not supplied	
transferring Registry Code	string	required	required	ZZ
transferring Registry Account Type	int	optional	required	120
transferring Registry Account Identifier	long	optional	not supplied	
acquiring Registry Code	string	required	required to be Account Type 220 for Cancellation in response to Notification Type 2	ZZ
acquiring Registry Account Type	int	optional	required for Cancellation	220
acquiring Registry Account Identifier	long	optional	required for Cancellation in response to Notification Type 2	42
notification Identifier	long	required	required for Cancellation in response to Notification Type 2	332
proposal Unit Blocks	Transaction Unit Block[]	required	required	
unit Serial Block Start	long	required	required	1551
unit Serial Block End	long	required	required	1600
originating Registry Code	string	required	required	ZZ
unit Type	int	required	required	1
supp Unit Type	int	optional	not supplied	
original Commit Period	int	required	required	1
applicable Commit Period	int	required	required	1
LULUCF Activity	int	optional	required for RMUs, ERUs converted from RMUs, ICERs and tCERs	
project Identifier	int	optional	required for ERUs, CERs, ICERs and tCERs	
track	int	optional	required for ERUs	
block Role	string	optional	not supplied	
transferring Registry Account Type	int	optional	not supplied	
transferring Registry Account Identifier	long	optional	not supplied	
acquiring Registry Account Type	int	optional	not supplied	
acquiring Registry Account Identifier	long	optional	not supplied	
year in Commitment Period	int	optional	not supplied	
installation Identifier	long	optional	not supplied	
expiry Date	date	optional	required for ICERs, tCERs	

2273
2274
2275

The ITL sends a notification update to indicate the requirement has been fulfilled.

2276
2277
2278

Figure L44: Notification Update (Requirement Fulfilled)

ITLNoticeRequest	Type	WSDL	KP Requirement	KP Sample Data
from	string	required	required	ITL
to	string	required	required	ZZ
major Version	int	required	required	1
minor Version	int	required	required	1
messageContent	string	required	required	The requirement to cancel units due to non-compliance has been fulfilled.
messageDate	dateTime	required	required	2005-11-14 12:05:34
notificationType	int	required	required	9
notificationIdentifier	long	required	required	332
notificationStatus	int	required	required	3
projectNumber	string	optional	not supplied	
unitType	int	optional	not supplied	
targetValue	long	optional	required for Notification Type 9 with status of 3 "Complete"	0
actionDueDate	date	optional	not supplied	
unitBlockIdentifiers	ArrayOfUnit Block Identifier	optional	not supplied	
unitSerialBlockStart	long	required	not supplied	
unitSerialBlockEnd	long	required	not supplied	
originatingRegistryCode	string	required	not supplied	

2279
2280
2281
2282
2283
2284
2285
2286
2287
2288
2289
2290
2291
2292
2293

3.3 Impending tCER or ICER Expiry (Type 3)

If a registry holds tCERs or ICERs that will expire within 30 days, the ITL will send this notification type, indicating the unit blocks which are to be replaced. The registry is required to initiate transfers of allowable units to a tCER or ICER Replacement Account (Account Type Code 411 or 421) or a Mandatory Cancellation Account (Account Type Code 250) or change the units before the tCERs or ICERs expire. The replacement or cancellation or replacement transactions submitted by the registry should must reference the notification identifier sent by the ITL. Periodically, or once the replacement requirement has been fulfilled, the ITL will send a Notification Update.

Figure L45: Impending Expiry Notification

ITLNoticeRequest	Type	WSDL	KP Requirement	KP Sample Data
from	string	required	required	ITL
to	string	required	required	ZZ
major Version	int	required	required	1
minor Version	int	required	required	1

(cont.)

Figure L45: Impending Expiry Notification (cont.)

ITLNoticeRequest	Type	WSDL	KP Requirement	KP Sample Data
messageContent	string	required	required	tCERs and/or ICERs held by this registry will expire within 30 days. The tCERs and ICERs specified in this message must be replaced or cancelled before they expire.
MessageDate	dateTime	required	required	2015-10-30 11:05:34
notificationType	int	required	required	3
notificationIdentifier	long	required	required	333
notificationStatus	int	required	required	1
projectNumber	string	optional	not supplied	
UnitType	int	optional	not supplied	
TargetValue	long	optional	not supplied	
ActionDueDate	date	optional	required	2015-11-30
unitBlockIdentifiers	ArrayOfUnit Block Identifier	optional	required for Notification Type 3	
unitSerialBlockStart	long	required	required	8101
unitSerialBlockEnd	long	required	required	8200
originatingRegistryCode	string	required	required	ZZ

The registry initiates a replacement transaction. Note that the replacement blocks (the AAUs) are listed first and that the blocks being replaced (the ICERs) are listed last and indicated by a block role of 'REP.'

Figure L46: Replacement Transaction

ProposalRequest	Type	WSDL	KP Requirement	KP Sample Data
from	string	required	required	ZZ
to	string	required	required	ITL
major Version	int	required	required	1
minor Version	int	required	required	1
proposed Transaction	Proposal Transaction	required	required	
transaction Identifier	string	required	required	ZZ103
transaction Type	int	required	required	6
supp Transaction Type	int	optional	not supplied	
transferring Registry Code	string	required	required	ZZ
transferring Registry Account Type	int	optional	required	100
transferring Registry Account Identifier	long	optional	not supplied	
acquiring Registry Code	string	required	required	ZZ
acquiring Registry Account Type	int	optional	required	421
acquiring Registry Account Identifier	long	optional	not supplied	
notification Identifier	long	optional	required for Replacement in response to Notification Type 3	333

(cont.)

2294
2295
2296
2297
2298
2299
2300
2301

Figure L46: Replacement Transaction (cont.)

ProposalRequest	Type	WSDL	KP Requirement	KP Sample Data
proposal Unit Blocks	Transaction Unit Block[]	required	required	
First Block(s) – Replacing Units				
unit Serial Block Start	long	required	required	1
unit Serial Block End	long	required	required	500
originating Party Code	string	required	required	ZZ
unit Type	int	required	required	1
supp Unit Type	int	optional	not supplied	
original Commit Period	int	required	required	1
applicable Commit Period	int	required	required	1
LULUCF Activity	int	optional	required for RMUs, ERUs converted from RMUs, ICERs and tCERs	
project Identifier	int	optional	required for ERUs, CERs, ICERs and tCERs	
track	int	optional	required for ERUs	
block Role	string	optional	not supplied	
transferring Registry Account Type	int	optional	not supplied	
transferring Registry Account Identifier	long	optional	not supplied	
acquiring Registry Account Type	int	optional	not supplied	
acquiring Registry Account Identifier	long	optional	not supplied	
year in Commitment Period	int	optional	not supplied	
installation Identifier	long	optional	not supplied	
expiry Date	date	optional	required for ICERs and tCERs	
Last Block(s) – Units to be replaced				
unit Serial Block Start	long	required	required	8101
unit Serial Block End	long	required	required	8200
originating Party Code	string	required	required	ZZ
unit Type	int	required	required	7
supp Unit Type	int	optional	not supplied	
original Commit Period	int	required	required	1
applicable Commit Period	int	required	required	1
LULUCF Activity	int	optional	required for RMUs, ERUs converted from RMUs, ICERs and tCERs	1
project Identifier	int	optional	required for ERUs, CERs, ICERs and tCERs	5
track	int	optional	required for ERUs	
block Role	string	optional	required	REP
transferring Registry Account Type	int	optional	not supplied	
transferring Registry Account Identifier	long	optional	not supplied	
acquiring Registry Account Type	int	optional	not supplied	
acquiring Registry Account Identifier	long	optional	not supplied	
year in Commitment Period	int	optional	not supplied	
installation Identifier	long	optional	not supplied	
expiry Date	date	Optional	required for ICERs and tCERs	2015-11-30

2302
2303
2304
2305

The ITL sends a notification indicating the requirement has been fulfilled.

2306
2307

Figure L47: Notification Update (Requirement Fulfilled)

ITLNoticeRequest	Type	WSDL	KP Requirement	KP Sample Data
from	string	required	required	ITL
to	string	required	required	ZZ
major Version	int	required	required	1
minor Version	int	required	required	1
messageContent	string	required	required	The requirement to replace or cancel tCERS or ICERS about to expire has been fulfilled.
messageDate	dateTime	required	required	2015-11-14 12:05:34
notificationType	int	required	required	9
notificationIdentifier	long	required	required	333
notificationStatus	int	required	required	3
projectNumber	string	optional	not supplied	
unitType	int	optional	not supplied	
targetValue	long	optional	required for Notification Type 9 with status of 3 "Complete"	0
actionDueDate	date	optional	not supplied	
unitBlockIdentifiers	ArrayOfUnitBlockIdentifier	optional	not supplied	
unitSerialBlockStart	long	required	not supplied	
unitSerialBlockEnd	long	required	not supplied	
originatingRegistryCode	string	required	not supplied	

2308
2309
2310
2311
2312
2313
2314
2315
2316
2317
2318
2319
2320
2321
2322
2323

3.4 Reversal of Storage for CDM Project (Type 4)

In the event that a reversal of storage of greenhouse gases occurs within the boundaries of a CDM project for which ICERs have been issued, the ITL will send this notification type to all registries with holdings of ICERs from this project. This notification shall indicate that all ICERs associated with the project will be prevented from being transferred, other than to a Mandatory Cancellation Account (Account Type Code 250), until the appropriate number of ICERs has been replaced (or cancelled). Each registry is required to initiate transfers into a ICER Replacement Account for Reversal of Storage (Account Type Code 422), or a Mandatory Cancellation Account, and must reference the Notification ID within the transaction. Periodically, or once the replacement requirement has been fulfilled, the ITL will send a Notification Update.

Figure L48: Reversal of Storage for CDM Project Notification

ITLNoticeRequest	Type	WSDL	KP Requirement	KP Sample Data
from	string	required	required	ITL
to	string	required	required	ZZ
major Version	int	required	required	1
minor Version	int	required	required	1

(cont.)

Figure L48: Reversal of Storage for CDM Project Notification (cont.)

ITLNoticeRequest	Type	WSDL	KP Requirement	KP Sample Data
messageContent	string	required	required	A reversal of storage of greenhouse gasses has occurred at a CDM project and all transactions involving units associated with that project are suspended until the specified number of units are replaced or cancelled.
messageDate	dateTime	required	required	2005-10-30 11:05:34
notificationType	int	required	required	4
notificationIdentifier	long	required	required	334
notificationStatus	int	required	required	1
projectNumber	string	optional	required for Notification Type 4	225
unitType	int	optional	not supplied	
targetValue	long	optional	required for Notification Type 4	250
actionDueDate	date	optional	required	2005-11-30
unitBlockIdentifiers	ArrayOfUnit Block Identifier	optional	not supplied	
unitSerialBlockStart	long	required	not supplied	
unitSerialBlockEnd	long	required	not supplied	
originatingRegistryCode	string	required	not supplied	

2324
2325
2326
2327
2328
2329

Registry submits a cancellation transaction for 100 affected units.

Figure L49: Reversal of Storage Cancellation Transaction

ProposalRequest	Type	WSDL	KP Requirement	KP Sample Data
from	string	required	required	ZZ
to	string	required	required	ITL
major Version	int	required	required	1
minor Version	int	required	required	1
proposed Transaction	Proposal Transaction	required	required	
transaction Identifier	string	required	required	ZZ1041
transaction Type	int	required	required	4
supp Transaction Type	int	optional	not supplied	
transferring Registry Code	string	required	required	ZZ
transferring Registry Account Type	int	optional	required	120
transferring Registry Account Identifier	long	optional	not supplied	
acquiring Registry Code	string	required	required	ZZ
acquiring Registry Account Type	int	optional	required for Cancellation	230
acquiring Registry Account Identifier	long	optional	required for Cancellation	40
notification Identifier	long	optional	required for Cancellation in response to Notification Type 4	334

(cont.)

Figure L49: Reversal of Storage Cancellation Transaction (cont.)

ProposalRequest	Type	WSDL	KP Requirement	KP Sample Data
proposal Unit Blocks	Transaction Unit Block[]	required	required	
unit Serial Block Start	long	required	required	1501
unit Serial Block End	long	required	required	1600
originating Registry Code	string	required	required	ZZ
unit Type	int	required	required	7
supp Unit Type	int	optional	not supplied	
original Commit Period	int	required	required	1
applicable Commit Period	int	required	required	1
LULUCF Activity	int	optional	required for RMUs, ERUs converted from RMUs, ICERs and tCERs	1
project Identifier	int	optional	required for ERUs, CERs, ICERs and tCERs	5
track	int	optional	required for ERUs	
block Role	string	optional	not supplied	
transferring Registry Account Type	int	optional	not supplied	
transferring Registry Account Identifier	long	optional	not supplied	
acquiring Registry Account Type	int	optional	not supplied	
acquiring Registry Account Identifier	long	optional	not supplied	
year in Commitment Period	int	optional	not supplied	
installation Identifier	long	optional	not supplied	
expiry Date	date	optional	required for ICERs, tCERs	2015-11-01

The ITL sends a Notification Update indicating that 150 units still must be cancelled or replaced.

Figure L50: Notification Update (Progress Update)

ITLNoticeRequest	Type	WSDL	KP Requirement	KP Sample Data
from	string	required	required	ITL
to	string	required	required	ZZ
major Version	int	required	required	1
minor Version	int	required	required	1
messageContent	string	required	required	A reversal of storage of greenhouse gasses has occurred at a CDM project and all transactions involving units associated with that project are suspended until the specified number of units are replaced or cancelled.
messageDate	dateTime	required	required	2005-11-14 12:05:34
notificationType	int	required	required	9
notificationIdentifier	long	required	required	334
notificationStatus	int	required	required	2
projectNumber	string	optional	required for Notification Type 9 in response to Notification Type 4	225

(cont.)

2330
2331
2332
2333
2334
2335

Figure L50: Notification Update (Progress Update) (cont.)

ITLNoticeRequest	Type	WSDL	KP Requirement	KP Sample Data
unitType	int	optional	not supplied	
targetValue	long	optional	required for Notification Type 9 in response to Notification Type 4	150
actionDueDate	date	optional	required for Notification Type 9 with status of 2 "In Progress"	2005-11-30
unitBlockIdentifiers	ArrayOfUnit Block Identifier	optional	not supplied	
unitSerialBlockStart	Long	required	not supplied	
unitSerialBlockEnd	Long	required	not supplied	
originatingRegistryCode	String	required	not supplied	

Registry submits a replacement transaction for 150 units. Replacing Units transferred to Replacement Account for Reversal of Storage (Account Type Code 422).

Figure L51: Replacement Transaction

ProposalRequest	Type	WSDL	KP Requirement	KP Sample Data
from	string	required	required	ZZ
to	string	required	required	ITL
major Version	int	required	required	1
minor Version	int	required	required	1
proposed Transaction	Proposal Transaction	required	required	
transaction Identifier	string	required	required	ZZ1042
transaction Type	int	required	required	6
supp Transaction Type	int	optional	not supplied	
transferring Registry Code	string	required	required	ZZ
transferring Registry Account Type	int	optional	required	100
transferring Registry Account Identifier	long	optional	not supplied	
acquiring Registry Code	string	required	required	ZZ
acquiring Registry Account Type	int	optional	required	422
acquiring Registry Account Identifier	long	optional	not supplied	
notification Identifier	long	optional	required for Replacement in response to Notification Type 4	334
proposal Unit Blocks	Transaction Unit Block[]	required	required	
First Block(s) – Replacing Units				
unit Serial Block Start	long	required	required	501
unit Serial Block End	long	required	required	650
originating Party Code	string	required	required	ZZ
unit Type	int	required	required	1
supp Unit Type	int	optional	not supplied	
original Commit Period	int	required	required	1
applicable Commit Period	int	required	required	1

(cont.)

2336
2337
2338
2339
2340
2341

Figure L51: Replacement Transaction (cont.)

ProposalRequest	Type	WSDL	KP Requirement	KP Sample Data
LULUCF Activity	int	optional	required for RMUs, ERUs converted from RMUs, ICERs and tCERs	
project Identifier	int	optional	required for ERUs, CERs, ICERs and tCERs	
track	int	optional	required for ERUs	
block Role	string	optional	not supplied	
transferring Registry Account Type	int	optional	not supplied	
transferring Registry Account Identifier	long	optional	not supplied	
acquiring Registry Account Type	int	optional	not supplied	
acquiring Registry Account Identifier	long	optional	not supplied	
year in Commitment Period	int	optional	not supplied	
installation Identifier	long	optional	not supplied	
expiry Date	date	optional	required for ICERs and tCERs	
Last Block(s) – Units to be replaced				
unit Serial Block Start	long	required	Required	8201
unit Serial Block End	long	required	Required	8350
originating Party Code	string	required	Required	ZZ
unit Type	int	required	Required	7
supp Unit Type	int	optional	not supplied	
original Commit Period	int	required	Required	1
applicable Commit Period	int	required	Required	1
LULUCF Activity	int	optional	required for RMUs, ERUs converted from RMUs, ICERs and tCERs	1
project Identifier	int	optional	required for ERUs, CERs, ICERs and tCERs	5
track	int	optional	required for ERUs	
block Role	string	optional	required	REP
transferring Registry Account Type	int	optional	not supplied	
transferring Registry Account Identifier	long	optional	not supplied	
acquiring Registry Account Type	int	optional	not supplied	
acquiring Registry Account Identifier	long	optional	not supplied	
year in Commitment Period	int	optional	not supplied	
installation Identifier	long	optional	not supplied	
expiry Date	date	optional	required for ICERs and tCERs	2015-11-01

2342
2343
2344
2345

The ITL sends a Notification Update indicating that the requirement has been fulfilled.

2346
2347

Figure L52: Notification Update (Requirement Fulfilled)

ITLNoticeRequest	Type	WSDL	KP Requirement	KP Sample Data
from	string	required	required	ITL
to	string	required	required	ZZ
major Version	int	required	required	1
minor Version	int	required	required	1
messageContent	string	required	required	The requirement to cancel or replace units due to a reversal of storage has been fulfilled.
messageDate	dateTime	required	required	2005-11-14 12:05:34
notificationType	int	required	required	9
notificationIdentifier	long	required	required	334
notificationStatus	int	required	required	3
projectNumber	string	optional	required for Notification Type 9 in response to Notification Type 4	225
unitType	Int	optional	not supplied	
targetValue	long	optional	required for Notification Type 9 with status of 3 "Complete"	0
actionDueDate	date	optional	not supplied	
unitBlockIdentifiers	ArrayOfUnit Block Identifier	optional	not supplied	
unitSerialBlockStart	long	required	not supplied	
unitSerialBlockEnd	long	required	not supplied	
originatingRegistryCode	string	required	not supplied	

2348
2349
2350
2351
2352
2353
2354
2355
2356
2357
2358
2359
2360
2361
2362

3.5 Non-submission of Certification Report for CDM Project (Type 5)

If the participants in a CDM Project, for which ICERs have been issued, have not submitted a certification report by the appointed time, the ITL will send this notification type to all registries with holdings of ICERs from this project. This notification shall indicated that all ICERs associated with the project will be prevented from being transferred, other than to a Mandatory Cancellation Account (Account Type Code 250). Each registry is required to initiate transfers into a ICER Replacement Account for Non-submission of Certification Report (Account Type Code 423), or a Mandatory Cancellation Account, and must reference the Notification ID. Periodically, or once the replacement requirement has been fulfilled, the ITL will send a Notification Update.

Figure L53: Non-submission of Certification Report for CDM Project Notification

ITLNoticeRequest	Type	WSDL	KP Requirement	KP Sample Data
from	string	required	required	ITL
to	string	required	required	ZZ
major Version	int	required	required	1
minor Version	int	required	required	1

(cont.)

Figure L53: Non-submission of Certification Report for CDM Project Notification (cont.)

ITLNoticeRequest	Type	WSDL	KP Requirement	KP Sample Data
messageContent	string	required	required	The CDM Executive Board has not received a Certification Report, and it has requested that all ICERs generated by the specified CDM project be prevented from being transferred (except to cancellation or replacement accounts).
messageDate	dateTime	required	required	2005-10-30 11:05:34
notificationType	int	required	required	5
notificationIdentifier	long	required	required	335
notificationStatus	int	required	required	1
projectNumber	string	optional	required for Notification Type 5	226
unitType	int	optional	not supplied	
targetValue	long	optional	not supplied	
actionDueDate	date	optional	not supplied	
unitBlockIdentifiers	ArrayOfUnitBlockIdentifier	optional	required for Notification Type 5	
unitSerialBlockStart	long	required	required	401
unitSerialBlockEnd	long	required	required	450
originatingRegistryCode	string	required	required	ZZ
unitSerialBlockStart	long	required	required	501
unitSerialBlockEnd	Long	required	required	550
originatingRegistryCode	String	required	required	ZZ
unitSerialBlockStart	Long	required	required	551
unitSerialBlockEnd	Long	required	required	650
originatingRegistryCode	String	required	required	ZZ

2363
2364
2365
2366
2367
2368

Registry submits a cancellation transaction for the affected units.

Figure L54: Non-submission of Certification Report Cancellation Transaction

ProposalRequest	Type	WSDL	KP Requirement	KP Sample Data
from	string	required	required	ZZ
to	string	required	required	ITL
major Version	int	required	required	1
minor Version	int	required	required	1
proposed Transaction	Proposal Transaction	required	required	
transaction Identifier	string	required	required	ZZ105
transaction Type	int	required	required	4
supp Transaction Type	int	optional	not supplied	
transferring Registry Code	string	required	required	ZZ
transferring Registry Account Type	int	optional	required	100
transferring Registry Account Identifier	long	optional	not supplied	
acquiring Registry Code	string	required	required	ZZ

(cont.)

Figure L54: Non-submission of Certification Report Cancellation Transaction (cont.)

ProposalRequest	Type	WSDL	KP Requirement	KP Sample Data
acquiring Registry Account Type	int	optional	required for Cancellation	230
acquiring Registry Account Identifier	long	optional	required for Cancellation	40
notification Identifier	long	optional	required for Cancellation in response to Notification Type 5	335
proposal Unit Blocks	Transaction Unit Block[]	required	required	
unit Serial Block Start	long	required	required	401
unit Serial Block End	long	required	required	450
originating Registry Code	string	required	required	ZZ
unit Type	int	required	required	7
supp Unit Type	int	optional	not supplied	
original Commit Period	int	required	required	1
applicable Commit Period	int	required	required	1
LULUCF Activity	int	optional	required for RMUs, ERUs converted from RMUs, ICERs and tCERs	1
project Identifier	int	optional	required for ERUs, CERs, ICERs and tCERs	226
track	int	optional	not supplied	
block Role	string	optional	not supplied	
transferring Registry Account Type	int	optional	not supplied	
transferring Registry Account Identifier	long	optional	not supplied	
acquiring Registry Account Type	int	optional	not supplied	
acquiring Registry Account Identifier	long	optional	not supplied	
year in Commitment Period	int	optional	not supplied	
installation Identifier	long	optional	not supplied	
expiry Date	date	optional	required for ICERs and tCERs	2015-11-01
unit Serial Block Start	long	required	required	501
unit Serial Block End	long	required	required	550
originating Registry Code	string	required	required	ZZ
unit Type	int	required	required	7
supp Unit Type	int	optional	not supplied	
original Commit Period	int	required	required	1
applicable Commit Period	int	required	required	1
LULUCF Activity	int	optional	required for RMUs, ERUs converted from RMUs, ICERs and tCERs	1
project Identifier	int	optional	required for ERUs, CERs, ICERs and tCERs	226
track	int	optional	not supplied	
block Role	string	optional	not supplied	
transferring Registry Account Type	int	optional	not supplied	
transferring Registry Account Identifier	long	optional	not supplied	
acquiring Registry Account Type	int	optional	not supplied	
acquiring Registry Account Identifier	long	optional	not supplied	
year in Commitment Period	int	optional	not supplied	
installation Identifier	long	optional	not supplied	
expiry Date	date	optional	required for ICERs and tCERs	2015-11-01
unit Serial Block Start	long	required	required	551
unit Serial Block End	long	required	required	650
originating Registry Code	string	required	required	ZZ

(cont.)

Figure L54: Lack of Certification Report Cancellation Transaction (cont.)

ProposalRequest	Type	WSDL	KP Requirement	KP Sample Data
unit Type	int	required	required	7
supp Unit Type	int	optional	not supplied	
original Commit Period	int	required	not supplied	1
applicable Commit Period	int	required	required	1
LULUCF Activity	int	optional	required for RMUs, ERUs converted from RMUs, ICERs and tCERs	1
project Identifier	int	optional	required for ERUs, CERs, ICERs and tCERs	226
track	int	optional	not supplied	
block Role	string	optional	not supplied	
transferring Registry Account Type	int	optional	not supplied	
transferring Registry Account Identifier	long	optional	not supplied	
acquiring Registry Account Type	int	optional	not supplied	
acquiring Registry Account Identifier	long	optional	not supplied	
year in Commitment Period	int	optional	not supplied	
installation Identifier	long	optional	not supplied	
expiry Date	date	optional	required for ICERs and tCERs	2015-11-01

2369
2370
2371
2372
2373
2374

The ITL sends a Notification Update indicating that the requirement has been fulfilled.

Figure L55: Notification Update (Requirement Fulfilled)

ITLNoticeRequest	Type	WSDL	KP Requirement	KP Sample Data
from	string	required	required	ITL
to	string	required	required	ZZ
major Version	int	required	required	1
minor Version	int	required	required	1
messageContent	string	required	required	The requirement to cancel or replace units due to the non-submission of a certification report has been fulfilled.
messageDate	dateTime	required	required	2005-11-14 12:05:34
notificationType	int	required	required	9
notificationIdentifier	long	required	required	335
notificationStatus	int	required	required	3
projectNumber	string	optional	required for Notification Type 9 in response to Notification Type 5	ZZ226
unitType	int	optional	not supplied	
targetValue	long	optional	required for Notification Type 9 with status of 3 "Complete"	0
actionDueDate	date	optional	not supplied	
unitBlockIdentifiers	ArrayOfUnit Block Identifier	optional	not supplied	

(cont.)

Figure L55: Notification Update (Requirement Fulfilled) (cont.)

ITLNoticeRequest	Type	WSDL	KP Requirement	KP Sample Data
unitSerialBlockStart	long	required	not supplied	
unitSerialBlockEnd	long	required	not supplied	
originatingRegistryCode	string	required	not supplied	

2375
2376
2377
2378
2379
2380
2381
2382
2383
2384
2385
2386
2387
2388
2389

3.6 Excess Issuance for CDM Project (Type 6)

If excess CERs (tCERs or ICERs) are issued for a CDM project, the CDM Executive Board may require the designated operational entity responsible for verifying the project to transfer, within 30 days, a specified number of units to the Excess Issuance Cancellation Account in the CDM registry. This notification and Notification ID is not delivered via a web service because it is directed to a business, not a specific registry. However, the cancellation transactions initiated by the designated operational entity must still reference the Notification ID that was sent in the email so that the ITL may track compliance with the notification. No notification updates are sent via the web service.

Figure L56: Excess Issuance for CDM Project Cancellation Transaction

ProposalRequest	Type	WSDL	KP Requirement	KP Sample Data
from	string	required	required	ZZ
to	string	required	required	ITL
major Version	int	required	required	1
minor Version	int	required	required	1
proposed Transaction	Proposal Transaction	required	required	
transaction Identifier	string	required	required	ZZ106
transaction Type	int	required	required	4
supp Transaction Type	int	optional	not supplied	
transferring Registry Code	string	required	required	ZZ
transferring Registry Account Type	int	optional	required	120
transferring Registry Account Identifier	long	optional	not supplied	
acquiring Registry Code	string	required	required	ZZ
acquiring Registry Account Type	int	optional	required for Cancellation	240
acquiring Registry Account Identifier	long	optional	required for Cancellation	44
notification Identifier	long	optional	required for Cancellation in response to Notification Type 6	336
proposal Unit Blocks	Transaction Unit Block[]	required	required	
unit Serial Block Start	long	required	required	7001
unit Serial Block End	long	required	required	7200
originating Registry Code	string	required	required	ZZ
unit Type	int	required	required	5
supp Unit Type	int	optional	not supplied	
original Commit Period	int	required	required	1
applicable Commit Period	int	required	required	1
LULUCF Activity	int	optional	required for RMUs, ERUs converted from RMUs, ICERs and tCERs	1
project Identifier	int	optional	required for ERUs, CERs, ICERs and tCERs	6
track	int	optional	required for ERUs	

(cont.)

Figure L56: Excess Issuance for CDM Project Cancellation Transaction (cont.)

ProposalRequest	Type	WSDL	KP Requirement	KP Sample Data
block Role	string	optional	not supplied	
transferring Registry Account Type	int	optional	not supplied	
transferring Registry Account Identifier	long	optional	not supplied	
acquiring Registry Account Type	int	optional	not supplied	
acquiring Registry Account Identifier	long	optional	not supplied	
year in Commitment Period	int	optional	not supplied	
installation Identifier	long	optional	not supplied	
expiry Date	date	optional	required for ICERs and tCERs	

2390
2391
2392
2393
2394
2395
2396
2397
2398
2399
2400
2401
2402

3.7 Commitment Period Reserve Change (Type 7)

In the event that a registry’s CPR limit is revised upward and the eligible holdings of the registry are insufficient to meet that new limit, the ITL will send a notification to the registry indicating the number of units by which it must raise its holdings. The registry is therefore required to acquire sufficient units from other registries. Since transactions are submitted by the transferring, not the acquiring Party, these transactions will not reference any Notification ID. Periodically, or once the acquisitions requirement has been fulfilled, the ITL will send a Notification Update.

Figure L57: Commitment Period Reserve Change

ITLNoticeRequest	Type	WSDL	KP Requirement	KP Sample Data
from	string	required	required	ITL
to	string	required	required	ZZ
major Version	int	required	required	1
minor Version	int	required	required	1
messageContent	string	required	required	The CPR level for this registry has been raised and it is necessary for the registry to acquire the number of units specified in this message within 30 days.
messageDate	dateTime	required	required	2005-10-30 11:05:34
notificationType	int	required	required	7
notificationIdentifier	long	required	required	337
notificationStatus	int	required	required	1
projectNumber	string	optional	not supplied	
unitType	Int	optional	not supplied	
targetValue	Long	optional	required for Notification Type 7	120
actionDueDate	Date	optional	required	2005-11-30
unitBlockIdentifiers	ArrayOfUnit Block Identifier	optional	not supplied	
unitSerialBlockStart	Long	required	not supplied	
unitSerialBlockEnd	Long	required	not supplied	
originatingRegistryCode	String	required	not supplied	

2403
2404

2405
2406
2407
2408
2409

This is an External Transaction proposal from a third party in which the registry in question acquires enough units to exceed the CPR.

Figure L58: External Transfer Transaction

ProposalRequest	Type	WSDL	KP Requirement	KP Sample Data
from	string	required	required	CL
to	string	required	required	ITL
major Version	int	required	required	1
minor Version	int	required	required	1
proposed Transaction	Proposal Transaction	required	required	
transaction Identifier	string	required	required	CL107
transaction Type	int	required	required	3
supp Transaction Type	int	optional	not supplied	
transferring Registry Code	string	required	required	CL
transferring Registry Account Type	int	optional	required	100
transferring Registry Account Identifier	long	optional	required	50
acquiring Registry Code	string	required	required	ZZ
acquiring Registry Account Type	int	optional	required	100
acquiring Registry Account Identifier	long	optional	required	658
notification Identifier	long	optional	not supplied	
proposal Unit Blocks	Transaction Unit Block[]	required	required	
unit Serial Block Start	long	required	required	9001
unit Serial Block End	long	required	required	9120
originating Registry Code	string	required	required	CL
unit Type	int	required	required	1
supp Unit Type	int	optional	not supplied	
original Commit Period	int	required	required	1
applicable Commit Period	int	required	required	1
LULUCF Activity	int	optional	required for RMUs, ERUs converted from RMUs, ICERs and tCERs	
project Identifier	int	optional	required for ERUs, CERs, ICERs and tCERs	
track	int	optional	required for ERUs	
block Role	string	optional	not supplied	
transferring Registry Account Type	int	optional	not supplied	
transferring Registry Account Identifier	long	optional	not supplied	
acquiring Registry Account Type	int	optional	not supplied	
acquiring Registry Account Identifier	long	optional	not supplied	
year in Commitment Period	int	optional	not supplied	
installation Identifier	long	optional	not supplied	
expiry Date	date	optional	not supplied	

2410
2411
2412
2413

The ITL sends a Notification Update indicating that the requirement has been fulfilled.

2414
2415

Figure L59: Notification Update (Requirement Fulfilled)

ITLNoticeRequest	Type	WSDL	KP Requirement	KP Sample Data
from	string	required	required	ITL
to	string	required	required	ZZ
major Version	int	required	required	1
minor Version	int	required	required	1
messageContent	string	required	required	The requirement to meet the CPR limit has been fulfilled.
messageDate	dateTime	required	required	2005-11-14 12:05:34
notificationType	int	required	required	9
notificationIdentifier	long	required	required	337
notificationStatus	int	required	required	3
projectNumber	string	optional	not supplied	
unitType	int	optional	not supplied	
targetValue	long	optional	required for Notification Type 9 with status of 3 "Complete"	0
actionDueDate	date	optional	not supplied	
unitBlockIdentifiers	ArrayOfUnit Block Identifier	optional	not supplied	
unitSerialBlockStart	long	required	not supplied	
unitSerialBlockEnd	long	required	not supplied	
originatingRegistryCode	string	required	not supplied	

2416
2417
2418
2419
2420
2421
2422
2423
2424
2425
2426
2427
2428
2429
2430
2431

3.8 Unit Carry-over (Type 8)

After the end of a True-up Period it is necessary for all units remaining in holding accounts to be carried over to the next Commitment Period or transferred to a Mandatory Cancellation Account (Account Type Code 250). The ITL will send this notification type to inform the registries of the number of each unit type which may be carried over, as determined by the Compliance Committee, and their holdings that must be carried over or transferred within 30 days. A separate notification will be sent for each unit type. Each carry-over transaction must contain a single unit type and must reference the Notification ID sent by the ITL. The units remaining after the carry-over must be transferred to the Mandatory Cancellation Account. Such cancellation transactions in response to a carry-over notification do not need to reference the Notification ID. Periodically, or once the carry-over and/or cancellation requirement has been fulfilled, the ITL will send a Notification Update.

2432
2433

Figure L60: Unit Carry-over Notification

ITLNoticeRequest	Type	WSDL	KP Requirement	KP Sample Data
from	string	required	required	ITL
to	string	required	required	ZZ
major Version	int	required	required	1
minor Version	int	required	required	1
messageContent	string	required	required	Due to the end of the Commitment Period, the units specified within this message must be carried-over or cancelled within 30 days.
messageDate	dateTime	required	required	2005-10-30 11:05:34
notificationType	int	required	required	8
notificationIdentifier	long	required	required	338
notificationStatus	int	required	required	1
projectNumber	string	optional	not supplied	
unitType	int	optional	required for Notification Type 8	1
targetValue	long	optional	required for Notification Type 8	1000
actionDueDate	date	optional	required for Notification Type 8	2005-11-30
unitBlockIdentifiers	ArrayOfUnitBlockIdentifier	optional	required for Notification Type 8	
unitSerialBlockStart	long	required	required	5001
unitSerialBlockEnd	long	required	required	5006
originatingRegistryCode	string	required	required	ZZ
unitSerialBlockStart	long	required	required	10001
unitSerialBlockEnd	long	required	required	11000
originatingRegistryCode	string	required	required	CL
unitSerialBlockStart	long	required	required	13001
unitSerialBlockEnd	long	required	required	14000
originatingRegistryCode	string	required	required	CL

2434
2435
2436
2437
2438
2439

The registry initiates a transaction to carry-over some of the outstanding units.

Figure L61: Unit Carry-over Transaction

ProposalRequest	Type	WSDL	KP Requirement	KP Sample Data
from	string	required	required	ZZ
to	string	required	required	ITL
major Version	int	required	required	1
minor Version	int	required	required	1
proposed Transaction	Proposal Transaction	required	required	
transaction Identifier	string	required	required	ZZ1081
transaction Type	int	required	required	7
supp Transaction Type	int	optional	not supplied	
transferring Registry Code	string	required	required	ZZ

(cont.)

Figure L61: Unit Carry-over Transaction (cont.)

ProposalRequest	Type	WSDL	KP Requirement	KP Sample Data
transferring Registry Account Type	int	required	required	100
transferring Registry Account Identifier	long	optional	not supplied	
acquiring Registry Code	string	required	required	ZZ
acquiring Registry Account Type	int	optional	not supplied	100
acquiring Registry Account Identifier	long	optional	not supplied	
notification Identifier	long	optional	required for Unit Carry-over transaction	338
proposal Unit Blocks	Transaction Unit Block[]	required	required	
unit Serial Block Start	long	required	required	10001
unit Serial Block End	long	required	required	11000
originating Registry Code	string	required	required	CL
unit Type	int	required	required	1
supp Unit Type	int	optional	not supplied	
original Commit Period	int	required	required	1
applicable Commit Period	int	required	required. Value is new commitment period	2
LULUCF Activity	int	optional	not supplied (unit types associated with LULUCFs are not eligible for carryover)	
project Identifier	int	optional	required for ERUs and CERs (only ERUs converted from AAUs are eligible for carryover)	
track	int	optional	required for ERUs (only ERUs converted from AAUs are eligible for carryover)	
block Role	string	optional	not supplied	
transferring Registry Account Type	int	optional	not supplied	
transferring Registry Account Identifier	long	optional	not supplied	
acquiring Registry Account Type	int	optional	not supplied	
acquiring Registry Account Identifier	long	optional	not supplied	
year in Commitment Period	int	optional	not supplied	
installation Identifier	long	optional	not supplied	
expiry Date	date	optional	not supplied (ICERs and tCERs are not eligible for carryover)	
unit Serial Block Start	long	required	required	13001
unit Serial Block End	long	required	required	14000
originating Registry Code	string	required	required	CL
unit Type	int	required	required	1
supp Unit Type	int	optional	not supplied	
original Commit Period	int	required	required	1
applicable Commit Period	int	required	required. Value is new commitment period	2
LULUCF Activity	int	optional	not supplied (unit types associated with LULUCFs are not eligible for carryover)	
project Identifier	int	optional	required for ERUs and CERs (only ERUs converted from AAUs are eligible for carryover)	

(cont.)

Figure L61: Unit Carry-over Transaction (cont.)

ProposalRequest	Type	WSDL	KP Requirement	KP Sample Data
track	int	optional	required for ERUs (only ERUs converted from AAUs are eligible for carryover)	
block Role	string	optional	not supplied	
transferring Registry Account Type	int	optional	not supplied	
transferring Registry Account Identifier	long	optional	not supplied	
acquiring Registry Account Type	int	optional	not supplied	
acquiring Registry Account Identifier	long	optional	not supplied	
year in Commitment Period	int	optional	not supplied	
installation Identifier	long	optional	not supplied	
expiry Date	date	optional	not supplied (ICERs and tCERs are not eligible for carryover)	

2440
2441
2442
2443
2444
2445

The registry cancels the remaining units.

Figure L62: Unit Carry-over Cancellation Transaction

ProposalRequest	Type	WSDL	KP Requirement	KP Sample Data
from	string	required	required	ZZ
to	string	required	required	ITL
major Version	int	required	required	1
minor Version	int	required	required	1
proposed Transaction	Proposal Transaction	required	required	
transaction Identifier	string	required	required	ZZ1082
transaction Type	int	required	required	3
supp Transaction Type	int	optional	not supplied	
transferring Registry Code	string	required	required	ZZ
transferring Registry Account Type	int	optional	required	100
transferring Registry Account Identifier	long	optional	not supplied	
acquiring Registry Code	string	required	not supplied	ZZ
acquiring Registry Account Type	int	optional	required for Cancellation	230
acquiring Registry Account Identifier	long	optional	required for Cancellation	43
notification Identifier	long	optional	not supplied	
proposal Unit Blocks	Transaction Unit Block[]	required	required	
unit Serial Block Start	long	required	required	5001
unit Serial Block End	long	required	required	5006
originating Registry Code	string	required	required	ZZ
unit Type	int	required	required	1
supp Unit Type	int	optional	not supplied	
original Commit Period	int	required	required	1
applicable Commit Period	int	required	required	1
LULUCF Activity	int	optional	required for RMUs, ERUs converted from RMUs, ICERs and tCERs	
project Identifier	int	optional	required for ERUs, CERs, ICERs and tCERs	
track	int	optional	required for ERUs	
block Role	string	optional	not supplied	

(cont.)

Figure L62: Unit Carry-over Cancellation Transaction (cont.)

ProposalRequest	Type	WSDL	KP Requirement	KP Sample Data
transferring Registry Account Type	int	optional	not supplied	
transferring Registry Account Identifier	long	optional	not supplied	
acquiring Registry Account Type	int	optional	not supplied	
acquiring Registry Account Identifier	long	optional	not supplied	
year in Commitment Period	int	optional	not supplied	
installation Identifier	long	optional	not supplied	
expiry Date	date	optional	required for ICERs, tCERs	

2446
2447
2448
2449
2450
2451

The ITL sends a Notification Update indicating the requirement has been fulfilled.

Figure L63: Notification Update (Requirement Fulfilled)

ITLNoticeRequest	Type	WSDL	KP Requirement	KP Sample Data
from	string	required	required	ITL
to	string	required	required	ZZ
major Version	int	required	required	1
minor Version	int	required	required	1
messageContent	string	required	required	The requirement to carry-over or cancel units has been fulfilled.
messageDate	dateTime	required	required	2005-11-14 12:05:34
notificationType	int	required	required	9
notificationIdentifier	long	required	required	338
notificationStatus	int	required	required	3
projectNumber	string	optional	not supplied	
unitType	int	optional	required for Notification Type 9 in response to Notification Type 8	1
targetValue	long	optional	required for Notification Type 9 with status of 3 "Complete"	0
actionDueDate	date	optional	not supplied	
unitBlockIdentifiers	ArrayOfUnit Block Identifier	optional	not supplied	
unitSerialBlockStart	long	required	not supplied	
unitSerialBlockEnd	long	required	not supplied	
originatingRegistryCode	string	required	not supplied	

2452
2453
2454
2455
2456