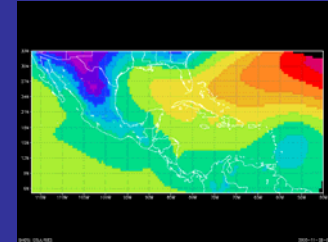
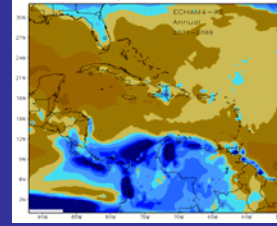
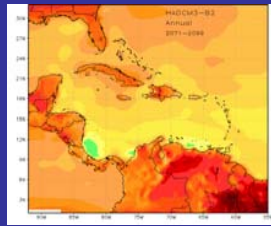
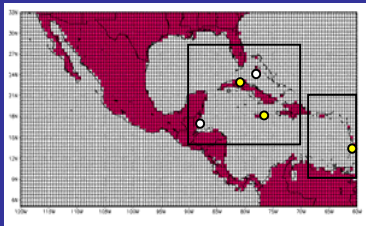


The PRECIS-Caribbean initiative.

Abel Centella, INSMET, Cuba



- Was borne in 2003. Is a regional collaborative effort to share: human and financial resources, experiences and results;
- Centers within the Caribbean are well committed and motivated. CCCCC and INSMET provide an strong support;
- 25 and 50 km resolution climate projections are available for all the countries within the region as input for SNCs;
- An online access was developed by INSMET (<http://precis.insmet.cu/Precis-Caribe.htm>)

Some lessons

- For the Caribbean, PRECIS is more than a tool. It is an opportunity for capacity building and technology transfer;
- Regional center will realize the importance of being part of a process. They will share the task of producing relevant regional climate scenarios among them;
- Shared more than results –experiences, frustrations, region specific solutions (especially storage), problem solving and analysis techniques;
- More work is required to address the issue of uncertainties in a wider perspective.