

Agriculture Production and Food and Nutrition Security in Malawi

FAO

27 February, 2017

- Agricultural production – largely rain-fed, smallholder agriculture: source of livelihood for >80% of the population residing in rural areas
- Key issue impeding ag prodn – extreme effects of CC – frequent and prolonged dry spells, floods
- National Agriculture Policy (NAP) – recently launched soon after the launch of the National Climate Change Management Policy
- Contemporary definition of food security = maize security
- Growing case load of food insecurity (less than 2m in 2015/2m in 2016/6.7m in 2017)

Moving forward

- Negative impacts of climate change on ag prdn, food security acknowledged as a key issue for the Ag sector
- Adaptation of the Ag sector to climate change
- Breaking the cycle and the National Resilience Plan
- Strengthening multisector collaboration and coordination in scaling up adoption of CSA (Ag, ENRM, Energy, Trade, Local Govt)
- Formulation of NAIP with resilience as a key pillar
- Catchment-focused approaches

Identification of FAW larva



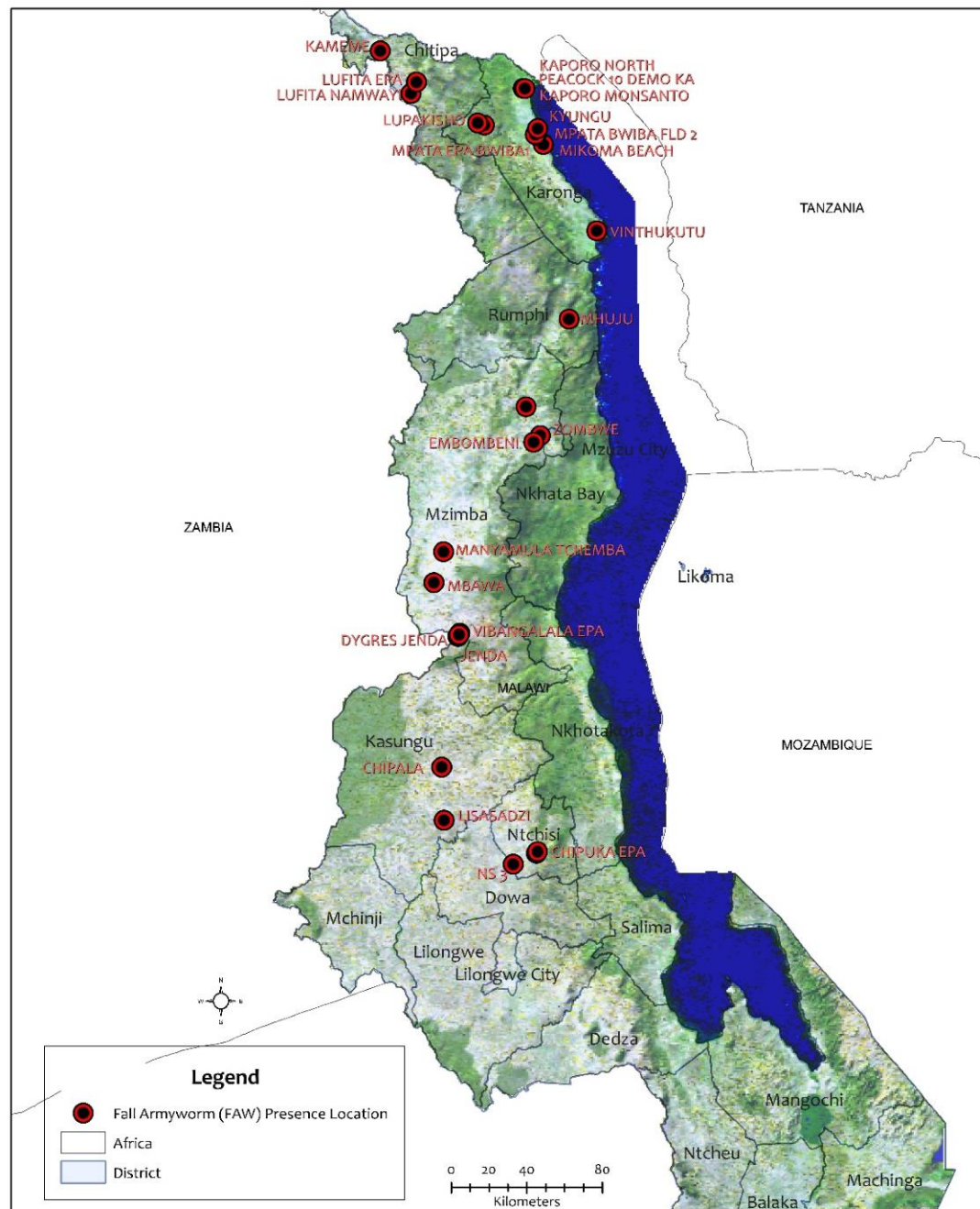
Case of mistaken identity (FAW, *B. fusca*, False Armyworm)



African Armyworm *Spodoptera exempta*



LOCATIONS OF FALL ARMYWORM PRESENCE IN KASUNGU, MZUZU AND KARONGA ADDS



Proportions of planting stations with FAW damage signs - scoping survey of Kasungu, Mzuzu and Karonga ADDs

ADD	District	EPA	Age of the crop (Weeks after planting)	Percent planting stations with FAW damage	Sample size (n)
Kasungu	Kasungu	Lisasadzi	9	34	60
		Lisasadzi	5	61	60
		Chipala	Not sampled due to heavy rains (FAW present)		
Mzuzu	Mzimba	Champhira	7	53	60
Mzuzu	Mzimba	Champhira	4	81	60
Mzuzu	Mzimba	Vibangarara	Light FAW infestation		Purposive sampling
Mzuzu	Mzimba	Mbawa	7	88	60
Mzuzu	Mzimba	Manyamula	4	59	60
Mzuzu	Mzimba	Manyamula	6	67	60
Mzuzu	Mzimba	Zombwe	5	45	60
Mzuzu	Mzimba		Embombeni (Patchy damage affecting the entire field, FAW seen)		Purposive sampling
Mzuzu	Rumphi	Mhuju	6	67	60
Karonga	Karonga	Mpata	6	97	60
Karonga	Karonga	Vinthukutu	6	100	60
Karonga	Karonga	Kaporo North	6	100	
Karonga	Karonga	Mpata	6	60	
Karonga	Chitipa	Kameme	Mixture of <i>Busseola fusca</i> and FAW		Purposive sampling
Karonga	Chitipa	Lufita	6	70	60

Severe maize crop damage due to FAW



Comparison between a sprayed crop (right) and unsprayed crop (left) planted on the same date and with similar fertilizer regime -
Vinthukutu, Karonga



Comparison between a sprayed crop (right) and unsprayed crop (left) planted on the same date and with similar fertilizer regime -
Vinthukutu, Karonga



Thank you for listening