

## Module 7: The NAP process

### 7.6 Potential support for the NAP process

**LEG training workshops for 2012-2013**

Anglophone African LDCs workshop  
29 July – 2 August 2013, Kigali, Rwanda



## In this module

### Where are we?

**Module 1:** Setting the stage

**Module 2:** Implementation strategies for the NAPA

**Module 3:** Accessing financial resources for implementation of NAPA

**Module 4:** Tracking progress, monitoring and evaluation

**Module 5:** Best practices and lessons learned

**Module 6:** Mainstreaming adaptation into development

**Module 7:** The NAP process

7.1. Introducing the NAP process

7.2. Establishing long-term NAP process

7.3. Stocktaking and synthesis

7.4. Analysis of capacity needs & gaps and possible strategies to address them

7.5. Data analysis, management and visualization

**7.6. Potential support for the NAP process**

### CASE STUDIES



### Learning points:

- LEG support to the NAP process
- Financial support channels available for the NAP process

### Guiding questions:

- What support is available for the NAP process?
- How to access available support?

## LEG support to the NAP process – progress so far

1

The LEG has produced the **technical guidelines** for the NAP process; they are being disseminated in English, French and Portuguese

2

The LEG identified **ways it could further support the LDCs over the next 2 years to undertake the NAP process** based on input and feedback from LDC Parties

3

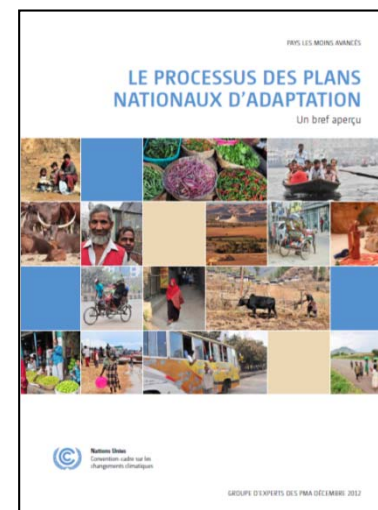
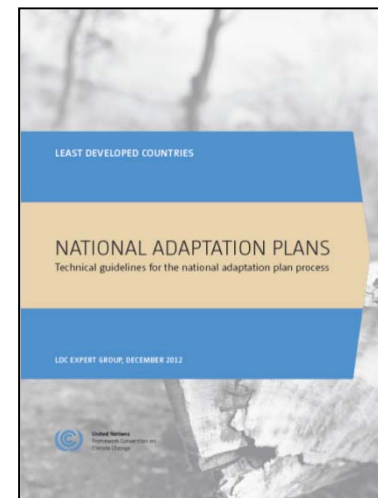
The LEG found out that **LDCs are ready to embark on the NAP process**, and that addressing the support needs identified will be part of the national activities of the NAP process

4

As part of its ongoing work in providing technical support to LDCs, the LEG has started to **incorporate training on NAPs in the ongoing training workshops**

5

The LEG organized the event **NAP Expo: Launching of the NAP process in LDCs**, 9 June 2013 in Bonn, Germany more at <<http://unfccc.int/7453>>



## Support programmes and other channels

---

**UN organizations, specialized agencies and other relevant organizations, as well as bilateral and multilateral agencies** have been **invited** to support the NAP process in LDCs

- And to consider establishing **support programmes** for the NAP process...which could facilitate financial and technical support to LDCs (Decision 5/CP.17)

**National and regional centres and networks invited** to strengthen their programmes and engage in support of the NAP process in LDCs at the regional, national and subnational levels.

- In a country-driven manner
- That encourages cooperation and coordination between regional stakeholders;
- Parties invited to strengthen their engagement with regional centres and networks

Developed country Parties urged to mobilize financial support for the NAP process for LDCs through **bilateral and multilateral channels**



## Financial support under the Convention (LDCF)

---

**Decision 12/CP.18** → guidance to the GEF to enable activities for the preparation of the NAP process by the LDC Parties through the LDCF

In concrete terms, the GEF has been requested:

- (a) [...] To meet the agreed full cost, as appropriate, of activities to **enable the preparation of the [NAP] process as [per] paragraphs 2–6 of the initial guidelines** [...] in the annex to decision 5/CP.17;
- (b) To provide support for the [NAP] process, **while maintaining support for the LDC work programme**, including NAPAs;
- (c) To encourage **a flexible approach** that enables the [LDC] Parties to access funding for components of the [NAP] process as identified by the [LDC] Parties in response to national needs and circumstances



## Financial support under the Convention (GCF)

---

The Green Climate Fund (GCF) is the designated operating entity of the financial mechanism of the UNFCCC, to provide financing for the implementation of the Convention

The Fund will strive to maximize the impact of its funding for adaptation and mitigation, and seek a balance between the two, while promoting environmental, social, economic and development co-benefits and taking a gender-sensitive approach.



## Support examples (UN organizations/agencies)

---

UNDP

UNEP

UNEP & UNDP

FAO

AfDB

WB/PPCR



## Support examples (bilateral agencies/programmes)

---

- European Union
- United States
- Poland
- Japan
- Canada
- China
- UK
- Ireland
- France
- Germany

