

**Ghana's experiences in mobilizing
resources and mainstreaming adaptation
in budget processes**

ANTWI-BOASIAKO AMOAH

ENVIRONMENTAL PROTECTION AGENCY (EPA), GHANA

Context

- **Ghana recognises the impacts of climate change both at home and globally**
- **Climate change and climate variability pose a challenge to national development**
- **Adaptation is cost effective**
- **Sectoral approach to mainstream adaptation is strategic to reduce climate vulnerabilities in the long-term**

Rationale for Mainstreaming

- **The process is driven by a proactive and long-term approach to addressing the impacts of climate change on Ghana's economy.**
- **The goal is to enhance Ghana's current and future development.**
- **To position Ghana to be able to draw from her own and other sources of funds, related to climate change, for development.**
- **Ensure sectoral collaboration.**

How to get this done?

- 1. By developing a national climate change adaptation strategy with wider consultations**
- 2. Training and capacity building programmes for planning and budgeting officers of the MMDAs**

Adaptation Programmes

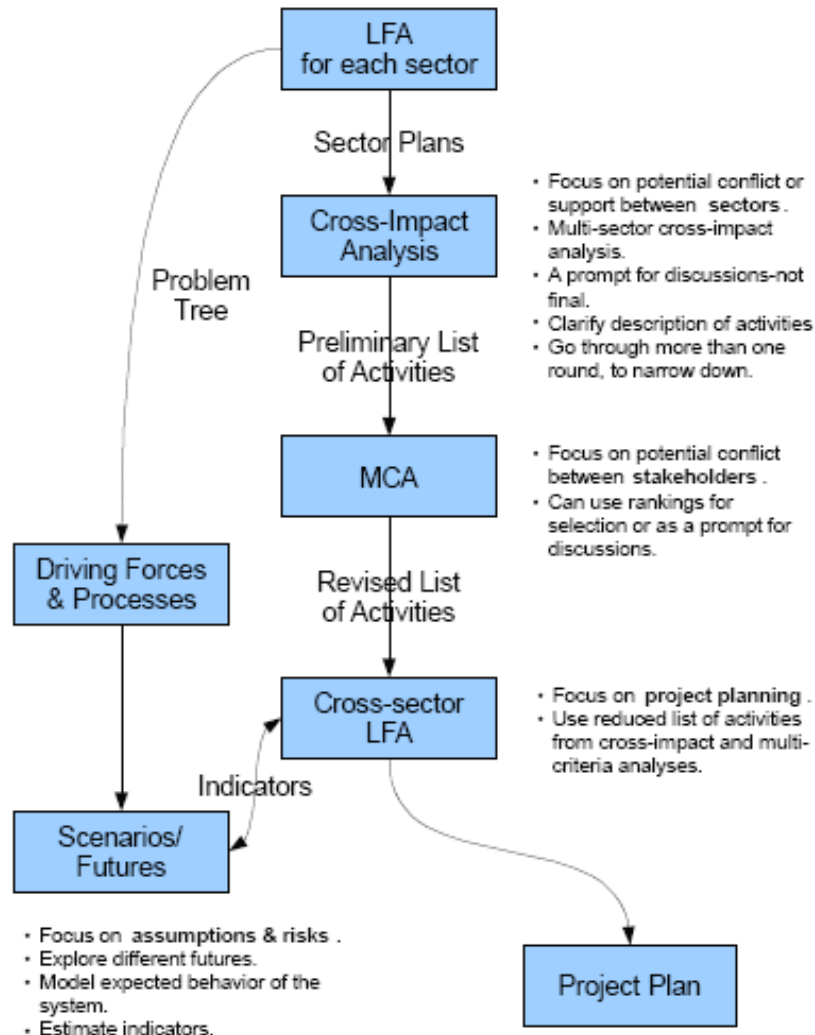


Illustration 1: Components of the Akropong Approach

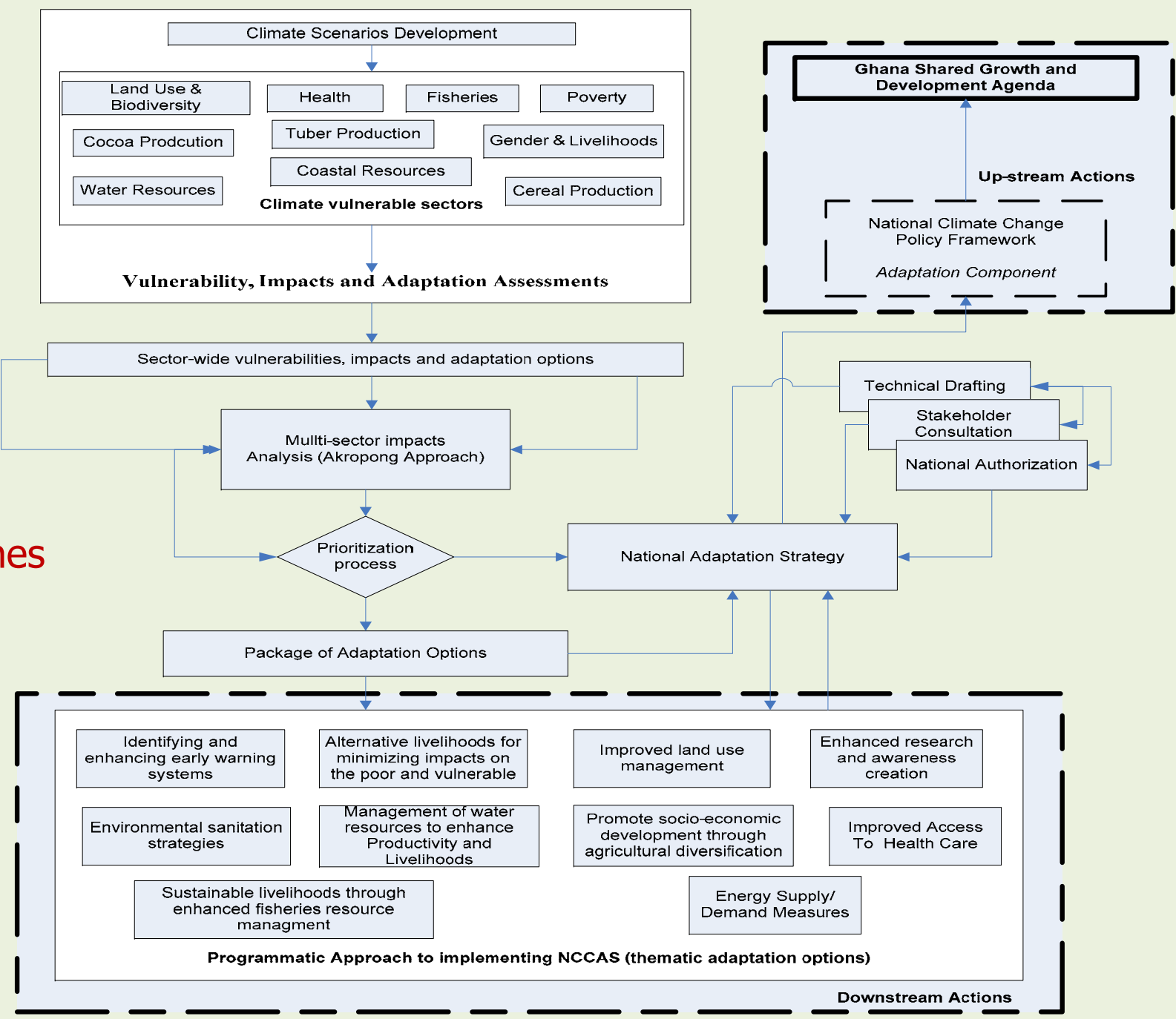
The Akropong Approach was designed to help the sectoral experts assess the inter-relationships between the sectoral proposed options,... using multi-criteria analysis (MCA) to evaluate and rank the options.

This helped in identifying 10 Priority programmes out of 75 possible options.

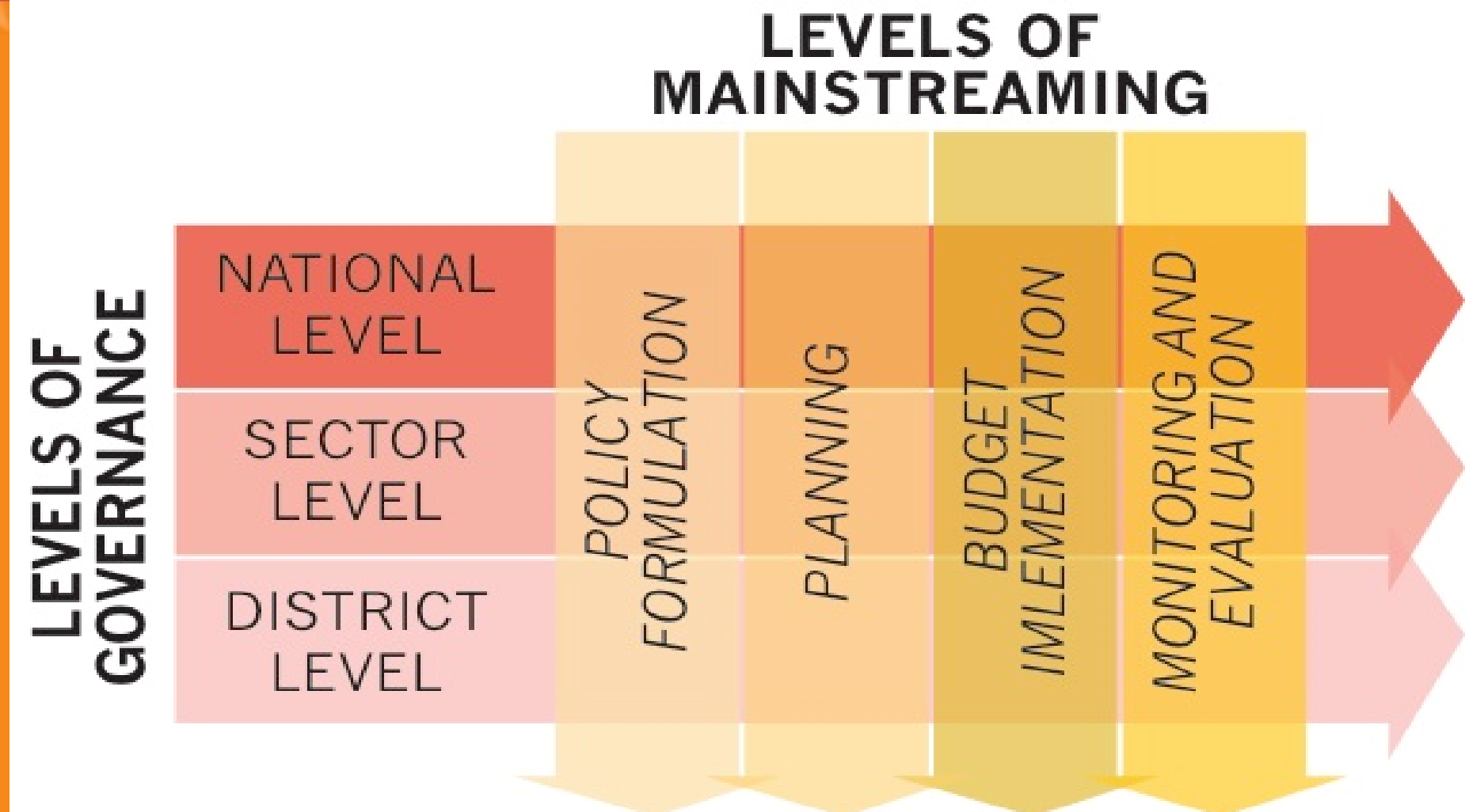
Multi-criteria Analysis(MCA)

1. the resilience of the adaptation intervention
2. The sustainability of the intervention
3. The potential to have multiplier effects (co-benefits) as a result of the implementation of the intervention
4. The extent of replicability of the intervention
5. The feasibility of the whole intervention

Approaches



The climate change mainstreaming process



Thank You!!!