

# Needs for data and climate observations emerging in support of the NAPs and the work by the LEG

**UNFCCC side event:**

**Dialogue with the systematic observation community on activities relevant to the  
Convention**

Wednesday 13 November 2013, Warsaw, Poland



***Batu Uprety***

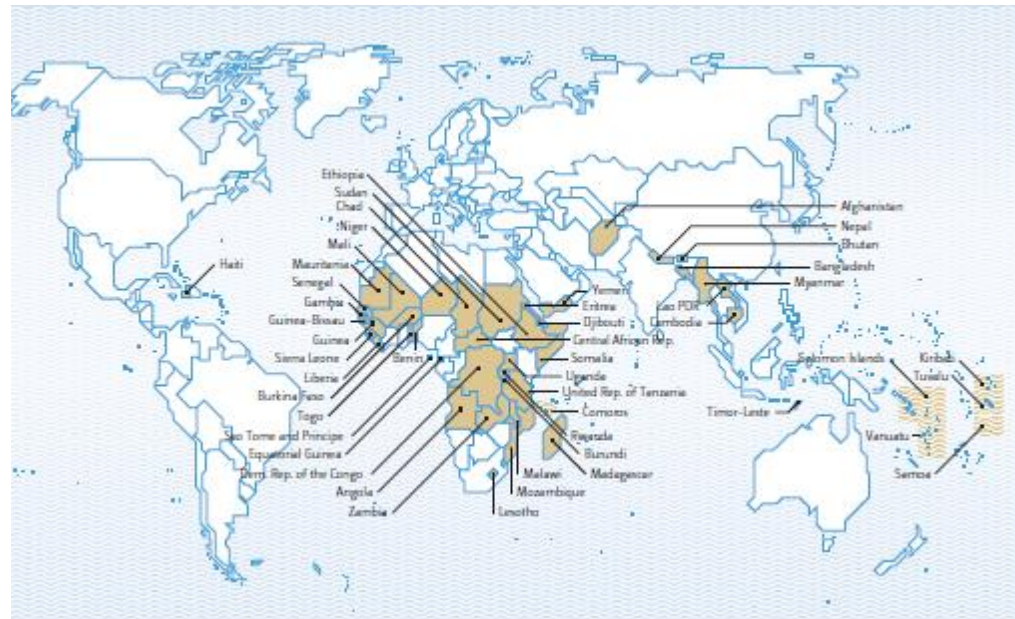
Vice-Chair, Least Developed Countries Expert Group (LEG)

## The Least Developed Countries Expert Group (LEG)

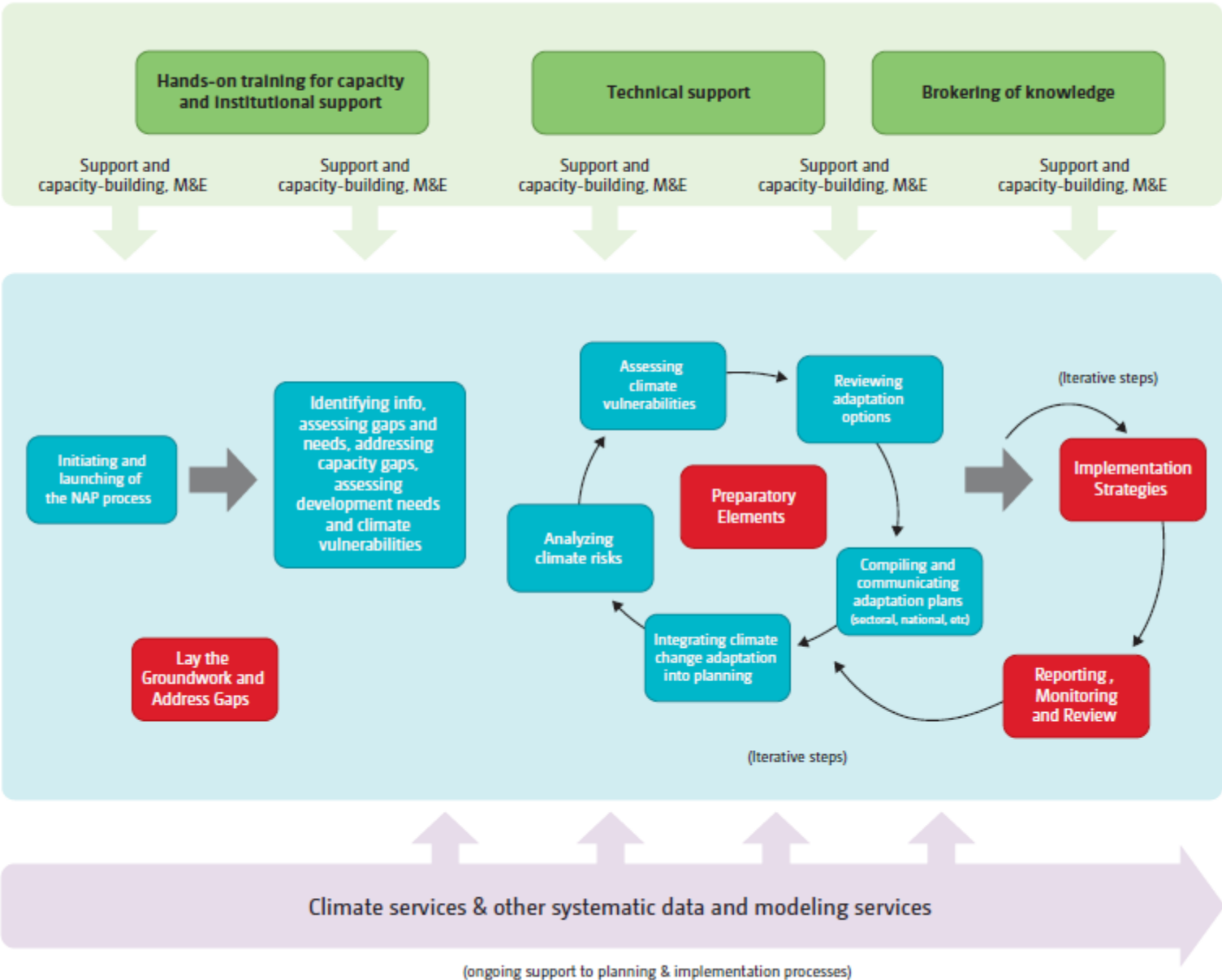
---

Under its current term (2011–2015) the LEG is mandated to provide:

- Technical support and advice to the LDCs on **national adaptation programmes of action (NAPAs)**, and the **LDC work programme**
- Technical guidance and support to the **national adaptation plan (NAP) process**



# The NAP process



## Key aspects of data and systematic observation (SO) under NAPs

---

- Stating the obvious: Data and SO are **crucial to support medium and long-term** planning, implementation, monitoring and review of progress
- Data would be assembled, collected, and processed to support **assessment** of impacts, climate change risks and vulnerabilities
- The NAP process would build on data and information from a **variety of sources**, including the NAPA, assessments under the national communication, and relevant activities
- Data structures will vary by country, and should **build on existing systems** such as those used by different ministries and national centers (e.g. meteorological services, national statistical offices, etc)



## Examples of relevant data for climate change adaptation

---

Quantitative and qualitative temporal (time series) and spatial (geographical) data on:

### Biophysical

- Meteorological and hydro-meteorological data
- Land cover (forest, water, grassland, agriculture)
- Topography (elevation)

### Socioeconomics

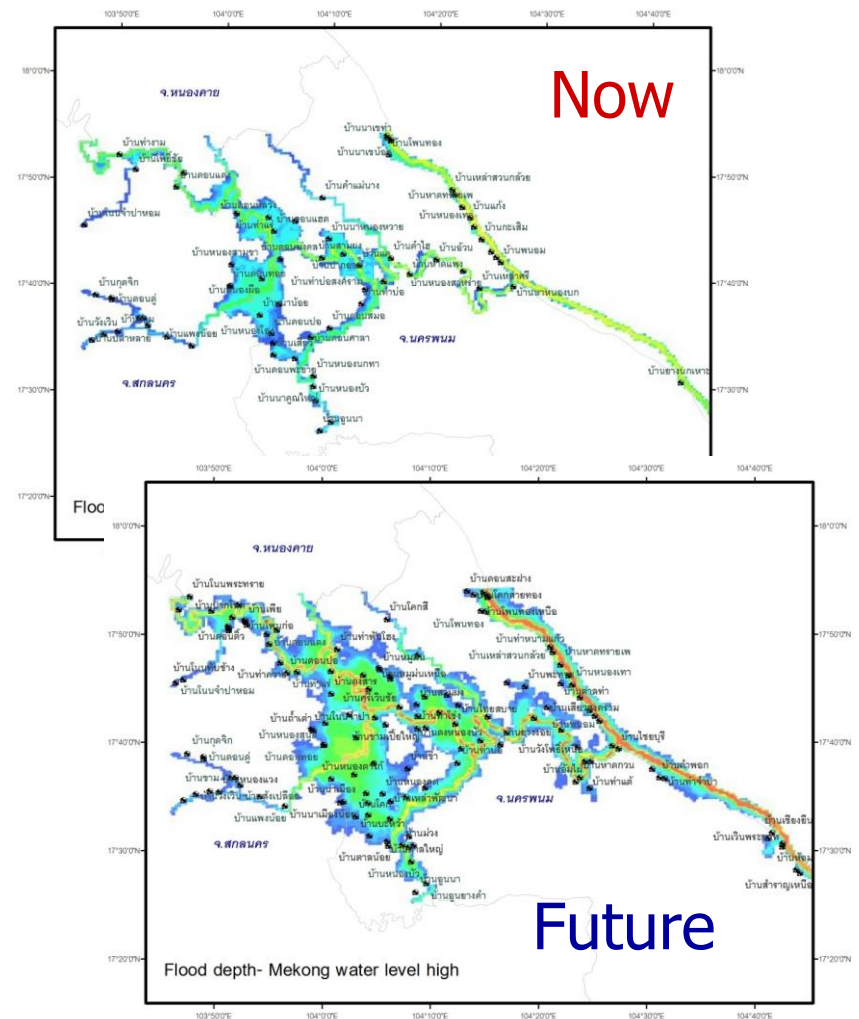
- Administrative boundaries
- Demography (population, gender, health etc.)
- Land use (type of agriculture, infrastructure, urban center etc.)
- Economics (services, industry, agriculture, forest, fish, income)

**Projected changes** in any of the above temperature, precipitation, demography etc.



# Capacity and resource requirements of LDCs for NAPs and other adaptation work

- Data on a **scale** relevant for LDCs
- Access to **latest techniques** for data collection (e.g. satellite-based)
- **Capacity-building** for data needs identification, data collection, management and rescue
- Support to develop physical and technical **infrastructure** for data collection and management
- Support for the **maintenance** of climate observational networks and climate information services



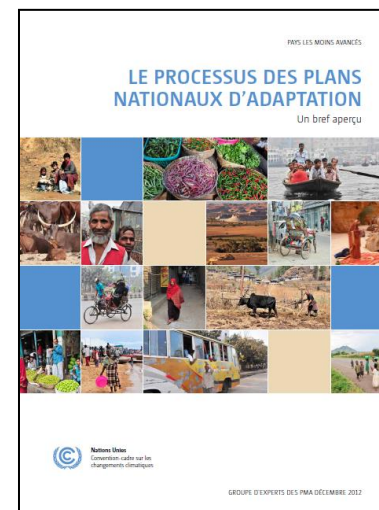
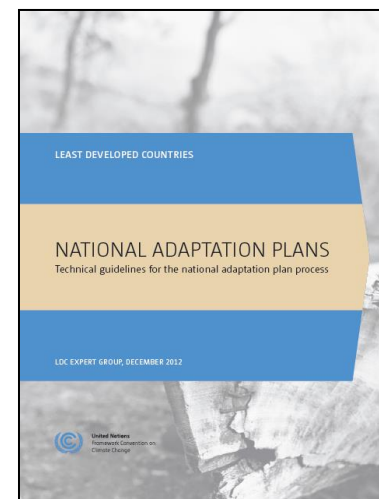
Change in flood boundary in lower Songkram River basin, Thailand



Source: WUP-Fin Group, MRCS, adopted from SEA START RC 2011

## LEG support to the NAP process

- 1 The LEG has produced the **technical guidelines** for the NAP process; data needs are explained under element B: Preparatory elements
- 2 The LEG continuously identifies ways it could further **provide and facilitate support** to the LDCs to undertake the NAP process based on inputs and feedback from LDC Parties
- 3 As part of its ongoing work in providing technical support to LDCs, the LEG is conducting **training workshops** which will focus on NAPs in the future
- 4 The LEG has organized the event **NAP Expo** to catalyse the launching of NAPs; future Expos will involve range of stakeholders



---

**Thank you**

