

# National Mitigation Policy of the Czech Republic

Pavel Zámyslický

Ministry of the Environment  
of the Czech Republic

Ministry of the Environment  
Vrsovicka 65, 100 10 Prague 10  
Czech Republic

[www.mzp.cz](http://www.mzp.cz)



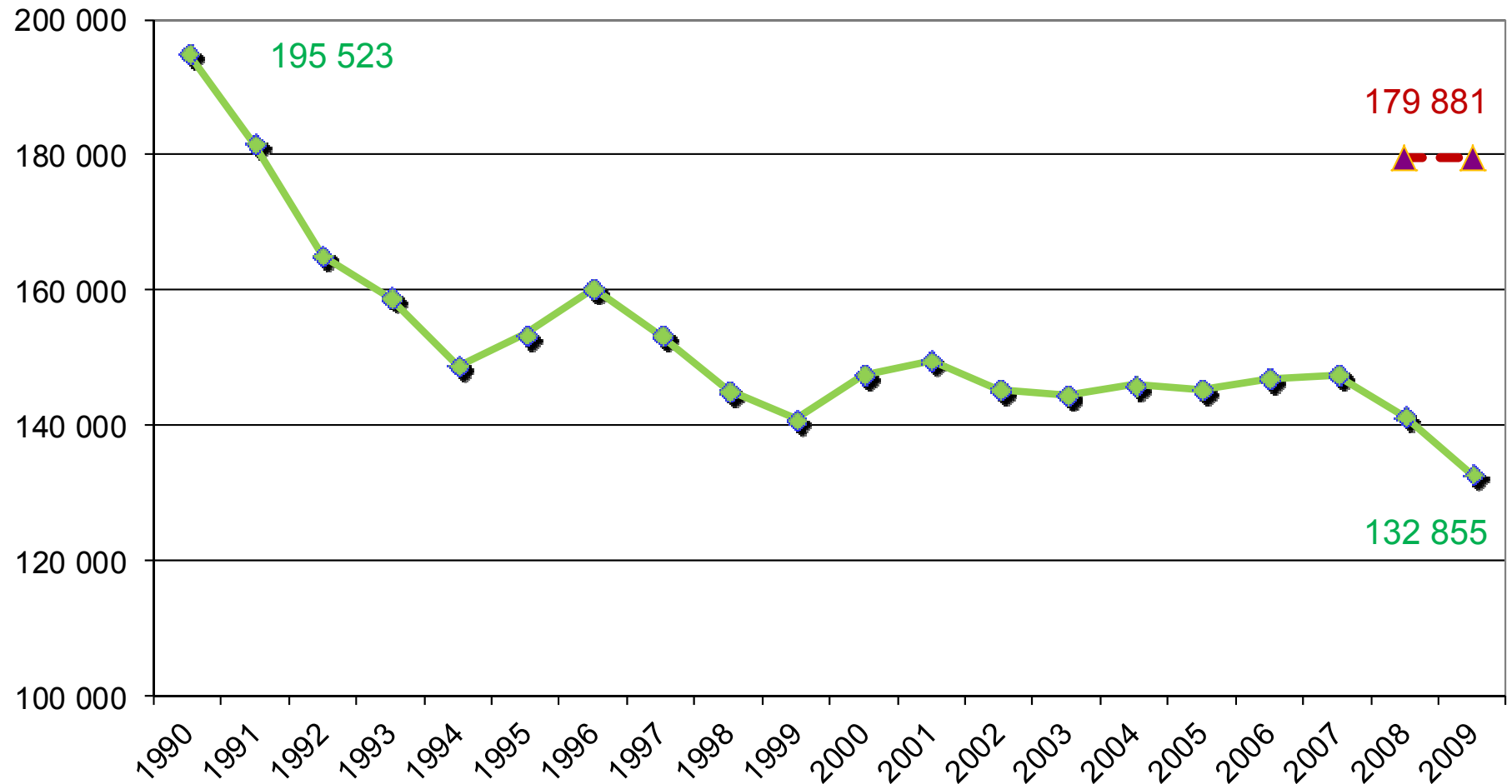
# Main Geographical Facts



- ❖ Population 10,47 mil.
- ❖ Area 78,867 km<sup>2</sup>
- ❖ Population density of 132 inhabitants/km<sup>2</sup>
- ❖ The average annual temperature varies from 1.0 to 9.4° C depending on geographic factors
- ❖ GDP (82% of EU AVG GDP)
- ❖ CO<sub>2eq</sub> per capita 12,68 t



# CZ GHG emission trajectory (excl. LULUCF)



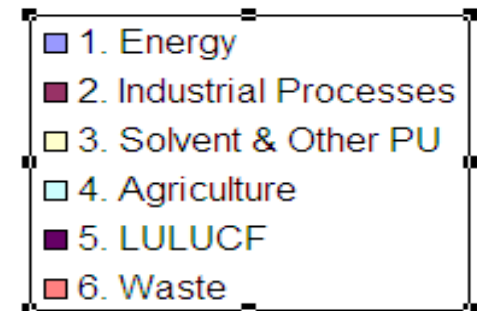
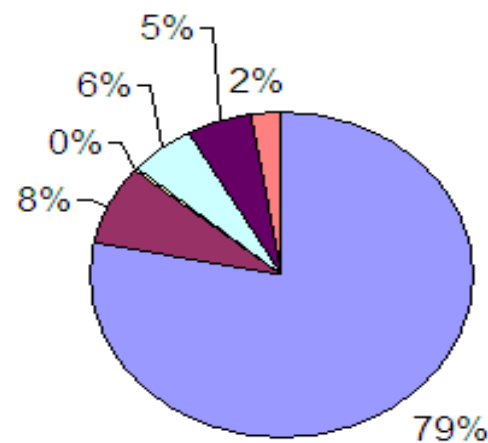
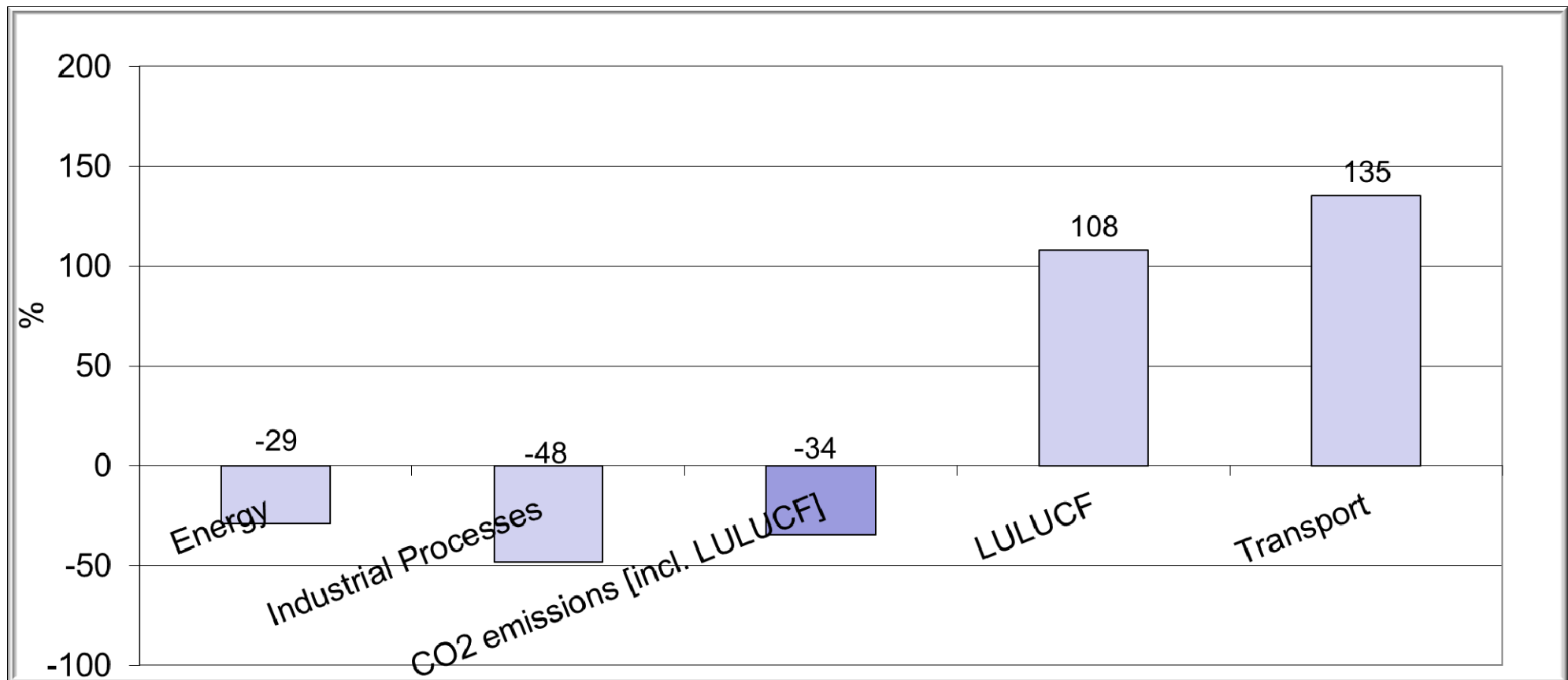
Ministry of the Environment  
of the Czech Republic

Ministry of the Environment  
Vrsovicke 65, 100 10 Prague 10  
Czech Republic

[www.mzp.cz](http://www.mzp.cz)



# Change from (base year) 1990 to 2009



# Main Climate Policy Features

- 2004 – National Programme to Abate the Climate Change Impacts in the Czech Republic
- 2011 – New Climate Change Policy will be completed and submitted to the government for approval
- 2020 targets respect the EU climate and energy objectives
- Target year 2020/2030, outlook for 2050
- Synergies and interlinkages with relevant sectoral (energy/raw material) policies
- Political decision about future energy mix and overall targets currently considered
- Summary of legal proposals and set of indicators should be included
- Regular tracking, review and amendments

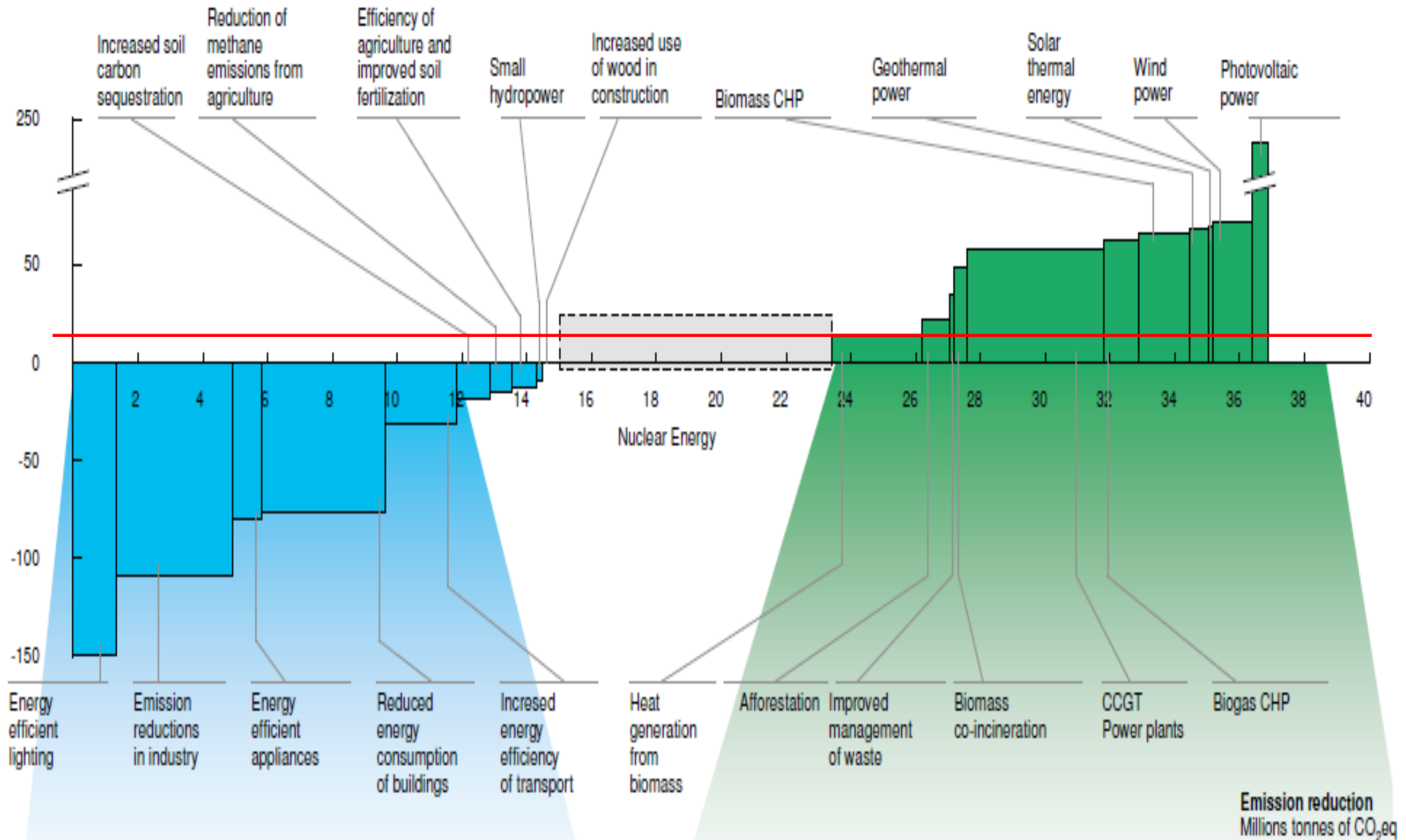


# Main Mitigation Tools

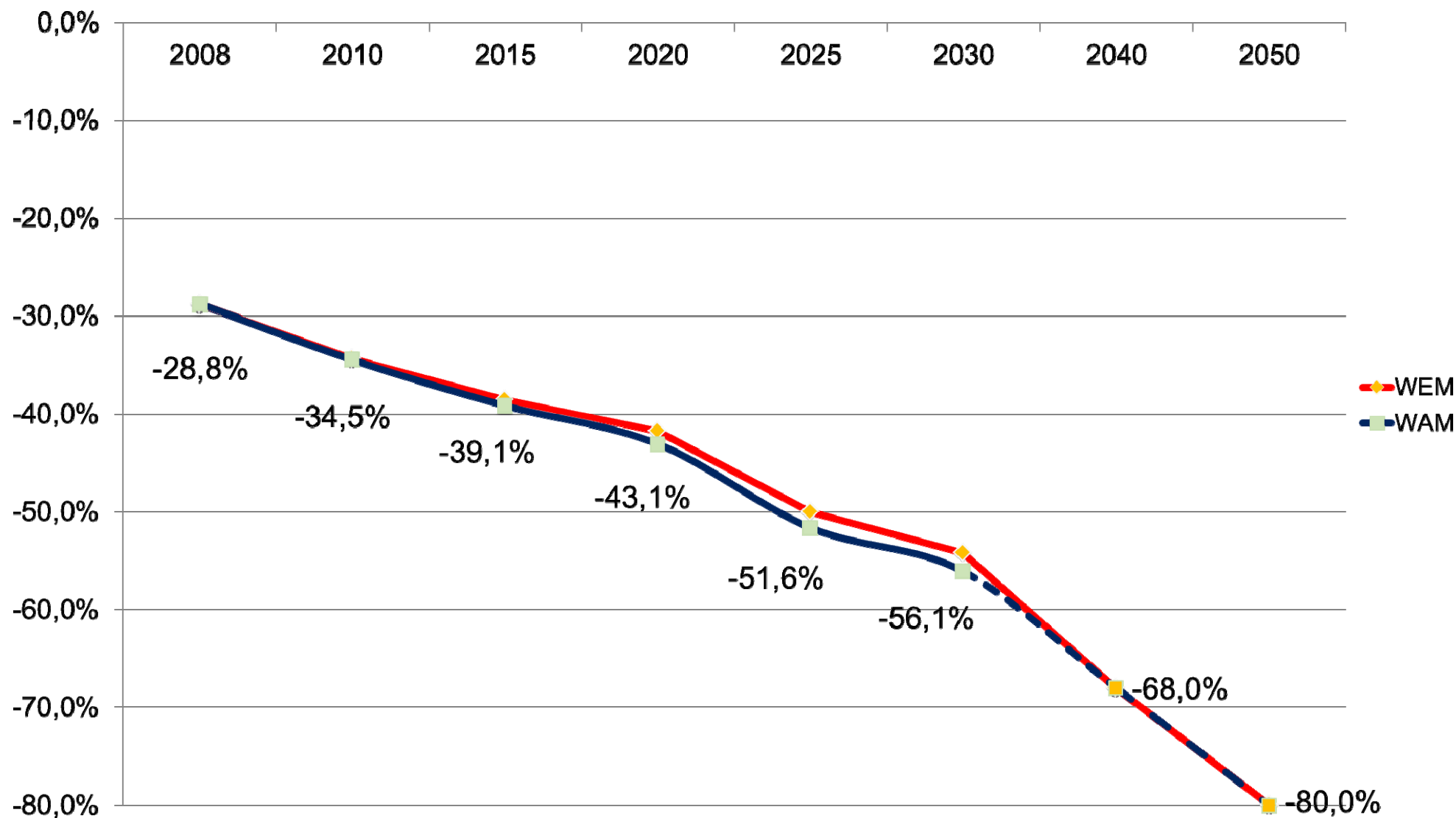
- EU ETS (60% GHG coverage + aviation)
- Power generation capacity modernization (New Nuclear Capacity, 3 new CCGT blocks, RES)
- Feed in tariffs (+ green certificates) system (electricity RES subsidy) – 13% RES target by 2020
- Green for savings programme (GIS)
- Joint Implementation (JI) < 100 projects
- EU Funds (energy, environmental and agricultural related)
- Energy (CO<sub>2</sub>) taxation
- EPBD (building standards and certification)
- Other legislation (IPPC, Air quality limits,..)
- Public Awareness and Education



# Abatement Measures Included in McKinsey Cost Curve



# GHG Emission Reduction Projections



Ministry of the Environment  
of the Czech Republic

Ministry of the Environment  
Vrsovicka 65, 100 10 Prague 10  
Czech Republic

[www.mzp.cz](http://www.mzp.cz)





# Thank you!



Ministry of the Environment  
of the Czech Republic

Ministry of the Environment  
Vrsovicke 65, 100 10 Prague 10  
Czech Republic

[www.mzp.cz](http://www.mzp.cz)



