

Estimates of investment and financial flows for mitigation in 2030

Erik Haites
Margaree Consultants

Presented to:
Dialogue on Long-Term Cooperative Action
Vienna – August 28, 2007



Project Goal

- To estimate **additional** investment and financial flows needed in selected sectors to return global greenhouse gas emissions to **current levels in 2030**

Challenges

- Estimate investment and financial flows in as much detail as possible – including regional disaggregation.

Approaches

- Additional investment and financial flows estimated in a particular year as the difference between the flows in mitigation and reference scenarios in that year.
- Future flows are compared with sources of funds for current flows.
- Period of 2005 – 2030: the level of detail declines sharply as the time horizon is extended beyond 2030
- Scenarios: IEA World Energy Outlook 2006 Reference and Beyond Alternative Policy Scenarios for energy-related CO₂ emissions, US EPA scenarios for non CO₂ emissions, and cost-effective mitigation potential for agriculture and forestry.

Limitations

- Limited availability of data for **regional disaggregation**.
- Current data cover investment flows for aggregated sectors. Identifying **role of different sources of funding for specific sectors** is not easy.
- The mitigation scenario does not consider the the **need for increased electricity access in developing countries**.
- No reference **scenario available for forestry**.
- Difficult to project investment needs for **non-commercialized mitigation technologies** like CCS
- The analysis does not provide **total cost of climate change mitigation**.
- The **estimates are preliminary, should be treated as indicative**.

Findings

Additional investment and financial flows in 2030

Sectors	Global, billion USD	Share of NAIP (percentage)
Energy Supply Infrastructure	(-) 67	55%
Industry	36	55%
Building	51	27%
Waste	0.9	67%
Transport	88	40%
Agriculture	35	67%
Forestry	21	99.5%
Energy RD&D	35 - 45	-

Global: 200 – 210 billion USD (0.92% of projected global investment and 0.26% of global GDP in 2030)

Non Annex I Parties: 76 - 77 billion USD (0.86% of Investment and 0.29% of GDP in 2030)

Amounts large in absolute terms, but small relative to GDP and investment

Energy Supply | Power Supply

- 35% of USD 432 billion annual investment shifted to renewables, CCS, nuclear and hydropower; over 55% in Non Annex I Parties.
- Investment made by government-owned or private, usually regulated, utilities and is domestically funded in most regions
- Renewables concentrated in few countries; private investment and CDM
- T&D investment needs further analysis



Energy Supply | Fossil Fuel Supply



- Annual investment in 2030 reduced by about 10% to USD 263 billion; about 55% in non-Annex I Parties

Investment continues to grow, but at a reduced rate

Investment mainly by large corporations, either government owned or private

Industry

- Additional investment of USD 36 billion for energy efficiency, CCS, and reduction of process emissions (CO₂ and non-CO₂); about 55% in Non Annex I Parties
- Energy efficiency and process emission reductions financed internally
- Increased investment in energy efficiency and process emission reductions is best achieved through appropriate policies or regulations



Building



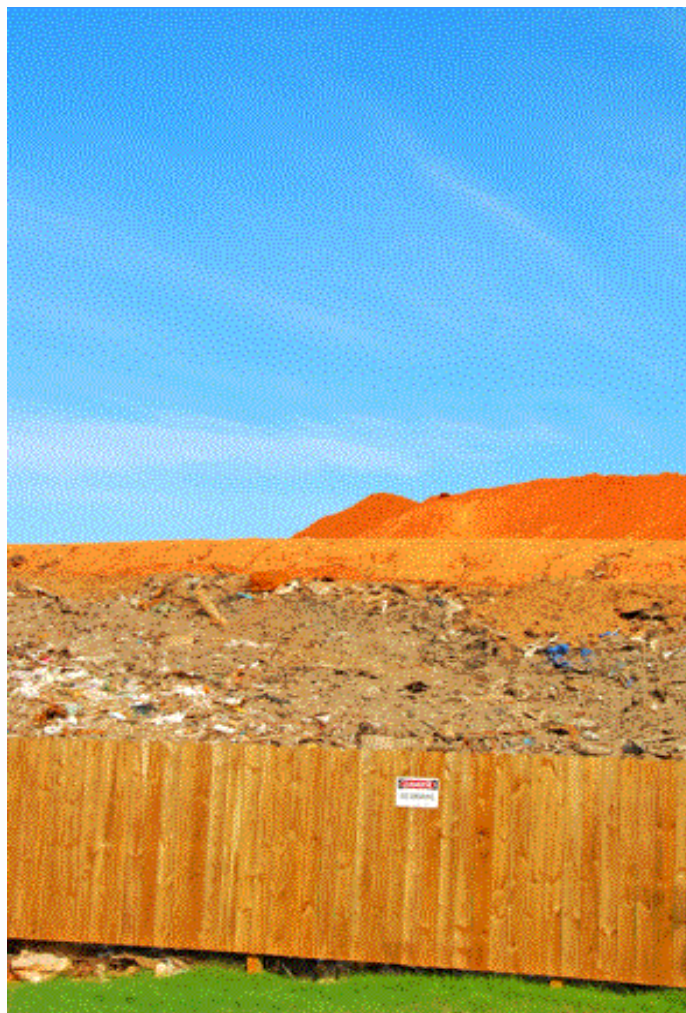
- Additional investment of USD 51 billion for energy (electricity and fossil fuel) efficiency; about 27% in non-Annex I Parties
- Energy efficiency financed internally
- Increased investment in energy efficiency is best achieved through appropriate policies or regulations (investments are incremental, and have short payback periods, but adoption is hampered by recognized barriers)

Transportation

- Additional investment of USD 88 billion for improved efficiency (90%) and biofuels (10%); about 40% in non-Annex I Parties
- Vehicle owners will bear the higher initial cost of more efficient vehicles
- Private sector will invest in biofuel production
- Increased investment needs appropriate policies or regulations for vehicle fuel efficiency and biofuel use



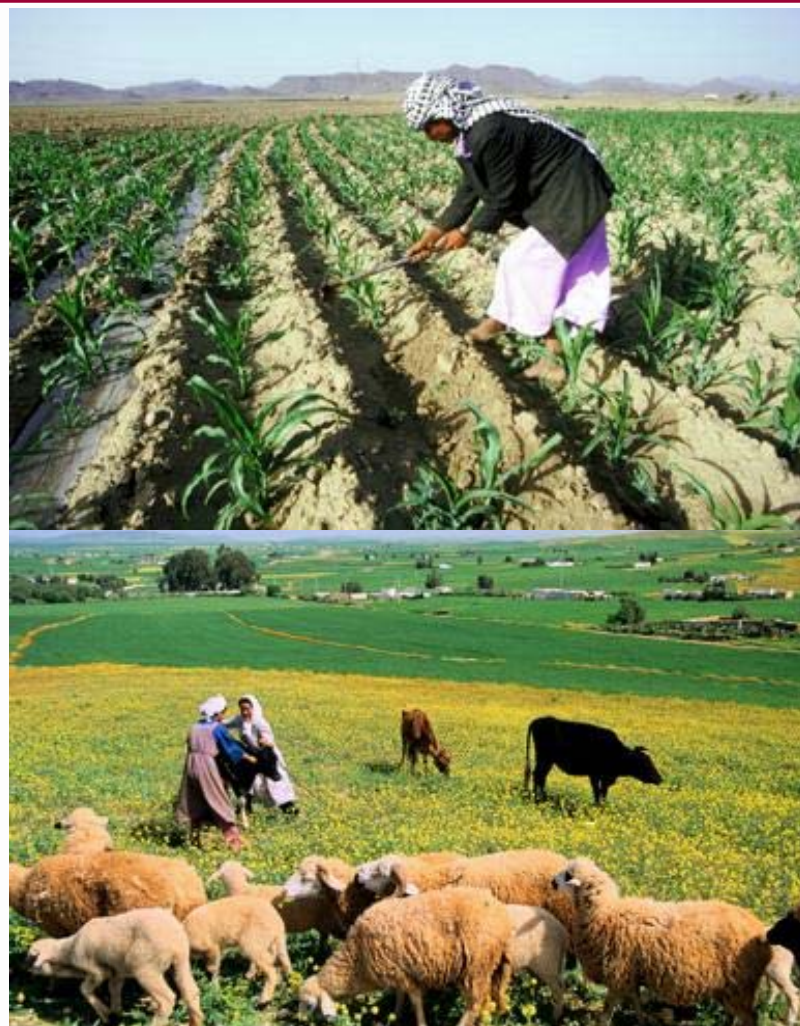
Waste Management



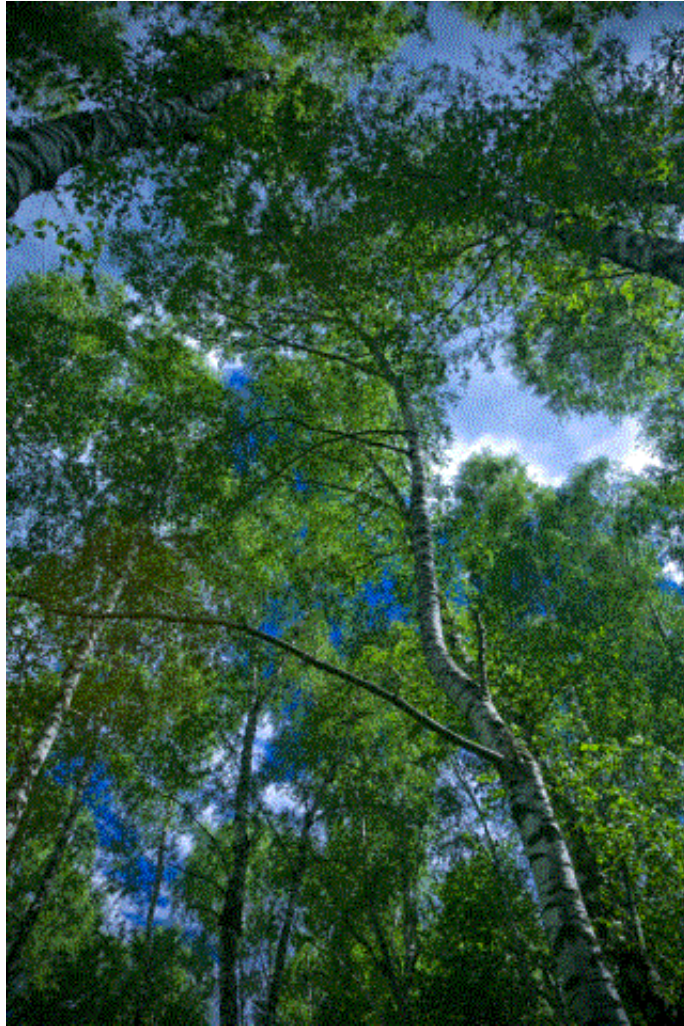
- Additional investment of USD 0.9 billion to capture CH₄ from landfills and wastewater treatment for energy use; about 67% in non-Annex I Parties
- Most landfills, wastewater treatment facilities are government owned or regulated
- Investment depends on government action
- CDM improves economics appreciably; can increase investment in non-Annex I Parties

Agriculture

- Investment of USD 15 billion in agroforestry to enhance sinks and financial flow of USD 20 billion to reduce non-CO₂ emissions; about 67% of latter in non-Annex I Parties
- Agroforestry more profitable, but has negative cash flow for a few years
- Actions to reduce non-CO₂ emissions probably need financial incentives
- CDM projects reduce CH₄ emissions from manure



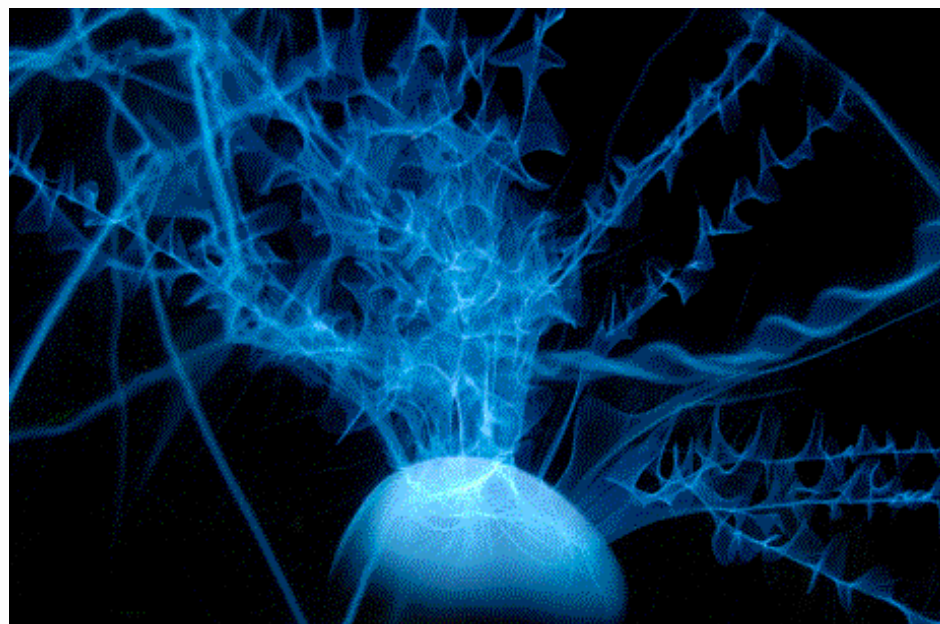
Forestry



- Financial flow of USD 21 billion to reduce emissions and investment of USD 12 billion for reducing deforestation, USD 8 billion for forest management and USD 1 billion for forestation; almost all in non-Annex I Parties
- Reduced deforestation, forest management need financial incentives; great uncertainty and many operational issues to be resolved
- Several options for supporting reduced deforestation proposed by Parties and NGOs; little funding for forest management

Energy R&D and Deployment

- Government spending on energy R&D has stagnated at about USD 10 billion, while private sector spending has fallen; most research in Japan and USA
- Stern Review suggested government energy R&D budgets need to be doubled to USD 20 billion
- Support for deployment of low GHG emitting technologies needs to double from USD 30 billion to about USD 60 billion



Additional investment and financial flows in 2030

Sectors	Global, billion USD	Share of NAIP (percentage)
Energy Supply Infrastructure	(-) 67	55%
Industry	36	55%
Building	51	27%
Waste	0.9	67%
Transport	88	40%
Agriculture	35	67%
Forestry	21	99.5%
Energy RD&D	35 - 45	-

Global: 200 – 210 billion USD (0.92% of projected global investment and 0.26% of global GDP in 2030)

Non Annex I Parties: 76 - 77 billion USD (0.86% of Investment and 0.29% of GDP in 2030)

Amounts large in absolute terms, but small relative to GDP and investment

Potential For Enhanced Investment and Financial Flows

Sources of investment and financial flows

- Most of the investment in mitigation measures is domestic
- Important to focus on the role of private-sector investments as they constitute the largest share of investment flows
- ODA is important in Africa and the LDCs
- Potential of the financial mechanism of the Convention is limited if it continues to rely on current levels and voluntary contributions = USD 990 million for the period 2006-2010
- Carbon market is already playing an important role in shifting investment flows.

Summary of changes needed

- Need **substantial shifts** in investment **as well as increase** in investment and especially **financial flows**
- **National policies** can play key role in driving many of the needed shifts and increases
- **Currently available sources** could cover a substantial part of the additional investment and financial flows needed
- However, **optimal combination of mechanisms**, such as the carbon markets, the financial mechanism of the Convention, ODA, national policies **and new sources** of finance is needed
- **Substantial share in non Annex I Parties**; lowest investment per tCO₂e reduction there
- **The entities that make the investment decisions are different** in each sector, and the policy and/or financial incentives needed will vary accordingly

Carbon Markets

- **CDM already shows a significant potential to leverage domestic and international investments**
- The **supply of Kyoto units will be abundant** compared with to the level of compliance demand for the **period 2008–2012**
- **Under a low estimate** of compliance demand by Annex I Parties in 2030 (market of USD 5–25 billion per year), the current flow of CDM projects would provide sufficient supply
- **Under a high estimate** of compliance demand (market of USD 100 billion per year), a large fraction of the potential emission reductions, from all existing and new categories of projects/mechanisms would be needed to for the supply
- **Policy certainty is important for investors.** A longer-term international agreement on climate change broadens the range of mitigation measures that are attractive investments

Policies

- Appropriate national policies can achieve many of the changes in all countries:
 - Types of new generation capacity
 - Energy efficiency regulations, biofuels
 - Planning regulations and design standards for infrastructure
- Policies should differ by sector
- Policies to attract foreign investment can increase the funds available
- International co-ordination of policies is desirable in technology R&D and deployment, and energy efficiency standards for internationally traded appliances and equipment

Options for new sources of funding

- Several possible new sources of funds, e.g.:
 - Int’nl air travel levy USD 10 to USD 15 billion/year
 - Access to renewables programmes in developed countries - USD 500 million
 - Donated special drawing rights - USD 18 billion
- Could generate funds commensurate with needs predictably
- Sources and uses of funds need to be negotiated as part of new agreement