



GLOBAL ENVIRONMENT FACILITY
INVESTING IN OUR PLANET

www.theGEF.org

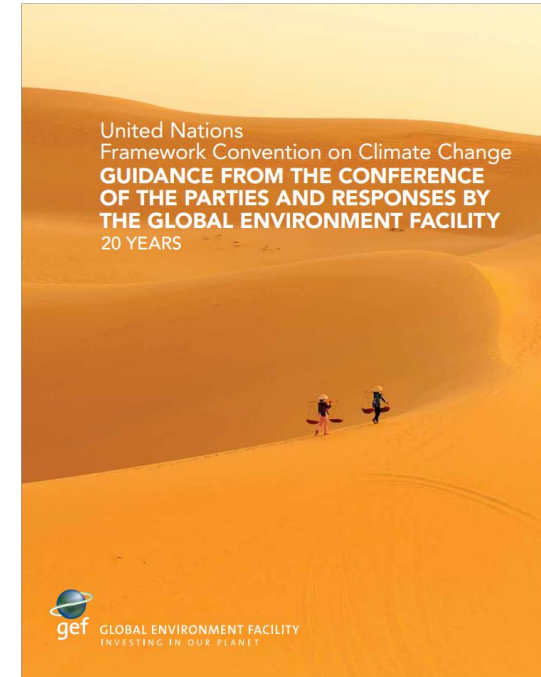
GEF support for Intended Nationally Determined Contributions (INDCs)

UNFCCC-Briefing on support for domestic preparations for
intended nationally determined contributions

Rawleston Moore
Senior Climate Change Specialist
Global Environment Facility
9th February 2015

GEF Support for INDCs

- COP 19 guidance requests operating entities of financial mechanism to provide support for INDCs
- COP 20 guidance reiterated the request for support for the preparation and communication of INDCs
- GEF is responding to guidance through:
 - i. Support for individual INDC preparations
 - ii. Global Support Program



GLOBAL ENVIRONMENT FACILITY
INVESTING IN OUR PLANET

Support for INDC Preparation

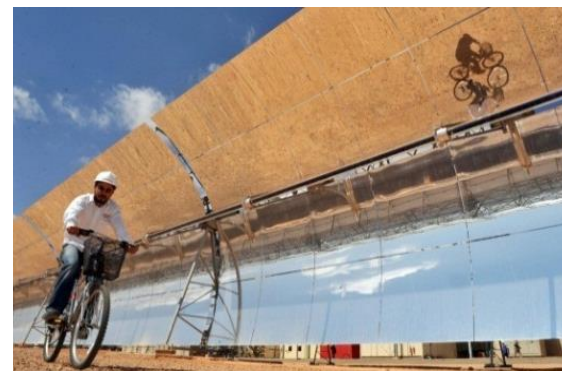
- Support options:
 - As stand-alone projects
 - With GEF national allocation
 - Combining INDC preparations with National Communications (NCs) and/or Biennial Update Reports (BURs)
 - With set-aside and GEF national allocation
 - Expedited approval if under \$1 million
 - No co-financing requirement
 - Submitted through GEF Agency



GLOBAL ENVIRONMENT FACILITY
INVESTING IN OUR PLANET

Support for INDC Preparation

- 16 countries have programmed GEF resources for INDCs so far:
 - Stand-alone: Thailand
 - Combined with NC/BUR: Timor L'este, Tunisia
 - UNDP Umbrella Programme: Azerbaijan, Cote d'Ivoire, Iraq, Yemen
 - UNEP Umbrella Programme:
 - **First round:** Congo DR, Dominica, Eritrea, Kyrgyz Republic, Moldova, Mongolia, South Africa, Swaziland, Zimbabwe
 - **Second round (under review):** Antigua and Barbuda, Fiji, Lesotho, Mauritania, Mozambique, Myanmar, Seychelles, Turkmenistan, Zambia
 - **Third round:** (under preparation by UNEP) Benin, Gabon, Guinea Bissau, Papua New Guinea, Rwanda, Sao Tome & Principe, Uzbekistan and Cambodia



GLOBAL ENVIRONMENT FACILITY
INVESTING IN OUR PLANET

Global Support Program

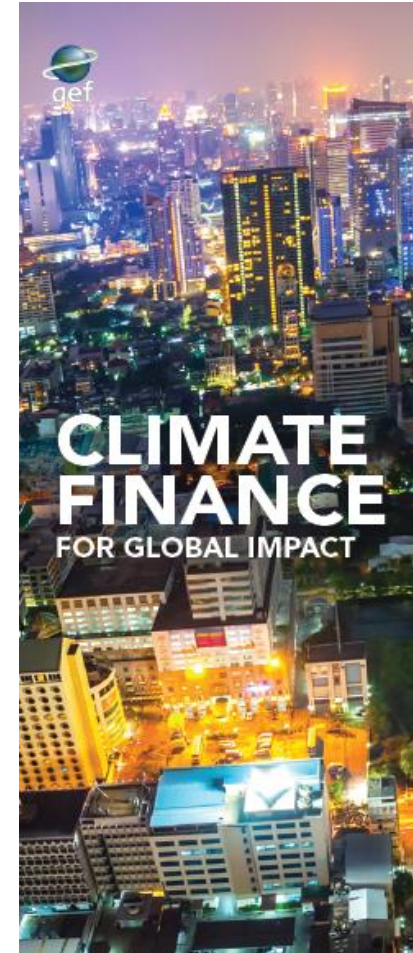
- INDC support element was added to Global Support Program for National Communications (NCs) and Biennial Update Reports (BURs)
- Supported activities:
 - Technical backstopping to national teams for INDC preparations, including guidance materials, methodologies, and tools
 - Capacity building, information sharing, and knowledge management
- Under implementation by UNDP and UNEP



GLOBAL ENVIRONMENT FACILITY
INVESTING IN OUR PLANET

Other Relevant GEF Support

- Mitigation and adaptation project support, including implementation of national priorities:
 - Relevant policy development and implementation
 - Data analysis
 - Capacity building
 - Project/program implementation
- Support for Nationally Appropriate Mitigation Actions (NAMAs), Technology Needs Assessment (TNA), National Adaptation Plan of Action (NAPA) implementation



GLOBAL ENVIRONMENT FACILITY
INVESTING IN OUR PLANET

Thank you for your attention

Please contact us at :

Milena Gonzalez: mgonzalezvasquez@thegef.org

Chizuru Aoki: caoki@thegef.org

Rawleston Moore: rmoore1@thegef.org

1818 H Street, NW, Mail Stop P4-400
Washington, DC 20433 USA



GLOBAL ENVIRONMENT FACILITY
INVESTING IN OUR PLANET



GEF2020 Strategy

- A new strategy of the GEF to support transformational change and achieve impacts at scale
- Outline of GEF2020 Strategy
 - Focus on drivers of environmental degradation
 - Deliver integrated solutions, given that many global challenges are interlinked
 - Forge close relationships with a variety of stakeholders
 - Finance resilience and adaptation
 - Ensure complementarity and synergies in climate finance



GLOBAL ENVIRONMENT FACILITY
INVESTING IN OUR PLANET

GEF-6 Programming

Systemic solutions for system problems



GLOBAL ENVIRONMENT FACILITY
INVESTING IN OUR PLANET

GEF Climate Change Mitigation Strategy

Goal: To support developing countries to make transformational shifts towards low emission, resilient development path

Objective 1: Promote innovation & technology transfer

Objective 2: Demonstrate systemic impacts of mitigation options

Objective 3: Foster enabling conditions to mainstream mitigation concerns into SD strategies



1. Low carbon technologies and mitigation options

3. Integrated low-carbon, urban systems

5. Convention obligations for planning and mitigation contributions

2. Innovative policy packages and market initiatives

4. Forests and other land use, and climate smart agriculture



GLOBAL ENVIRONMENT FACILITY
INVESTING IN OUR PLANET

GEF Adaptation Strategy

Goal: Increase resilience to the adverse impacts of climate change in vulnerable developing countries, through both near- and long-term adaptation measures

Objective 1: Reduce vulnerability of people, livelihoods, physical assets and natural systems

Objective 2: Strengthen institutional and technical capacities

Objective 3: Integrate adaptation into relevant policies, plans and associated processes



1.1 Vulnerability of physical assets and natural systems reduced

2.1 Increased awareness of climate change impacts, vulnerability and adaptation

3.1 Institutional arrangements to lead, coordinate and support the integration of adaptation established and strengthened

1.2 Livelihoods and sources of income of vulnerable populations diversified

2.2 Improved scientific and technical knowledge base

3.2 Policies, plans and associated processes developed and strengthened

1.3 Climate-resilient technologies and practices adopted and scaled up

2.3 Access to improved climate information and early-warning systems enhanced

3.3 Systems and frameworks for the continuous monitoring, reporting and review of adaptation established and strengthened

2.4 Institutional and technical capacities and human skills strengthened



GLOBAL ENVIRONMENT FACILITY
INVESTING IN OUR PLANET