

# Data and information needs for assessments under NAPs

**Earth Information Day**

**“Linking Earth observation with the global response to climate change”**

Marrakech Climate Change Conference, November 2016, Marrakech, Morocco



*Adrian Fitzgerald, LEG Member*

## Outline

---

- 1) Context for NAPs
- 2) Sample NAP process
- 3) Assessments for NAPs
- 4) Data and information needs for NAPs
- 5) Challenges in data and information management in the LDCs
- 6) Technical guidance and support by the LEG



## 1) The context for the process to formulate and implement NAPs

---

### Global

- Paris Agreement
- 2030 Agenda for Sustainable Development
- Sendai Framework for DRR
- Istanbul Programme of Action for the LDCs for 2011-2020
- SIDS Accelerated Modalities of Action Pathway
- Etc.

### Regional

- e.g. Africa Agenda 2063

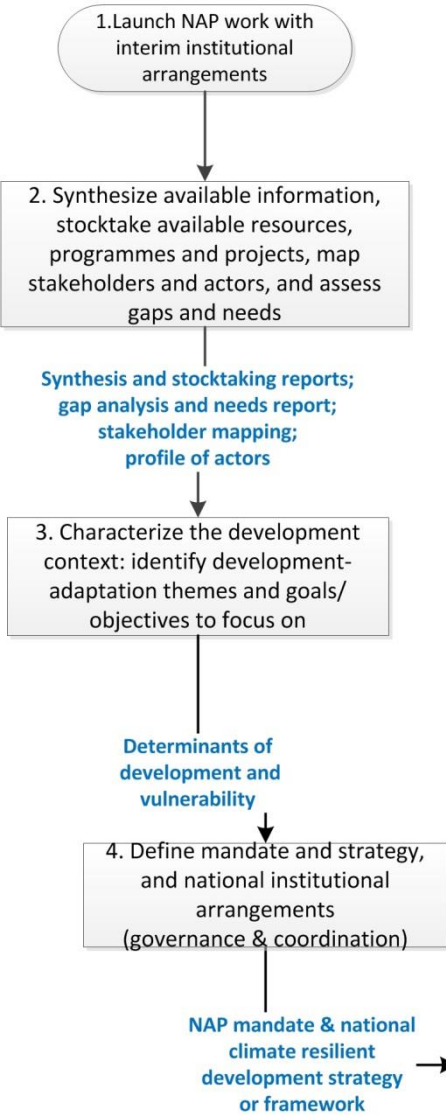
### National

- Policies, programmes and strategies

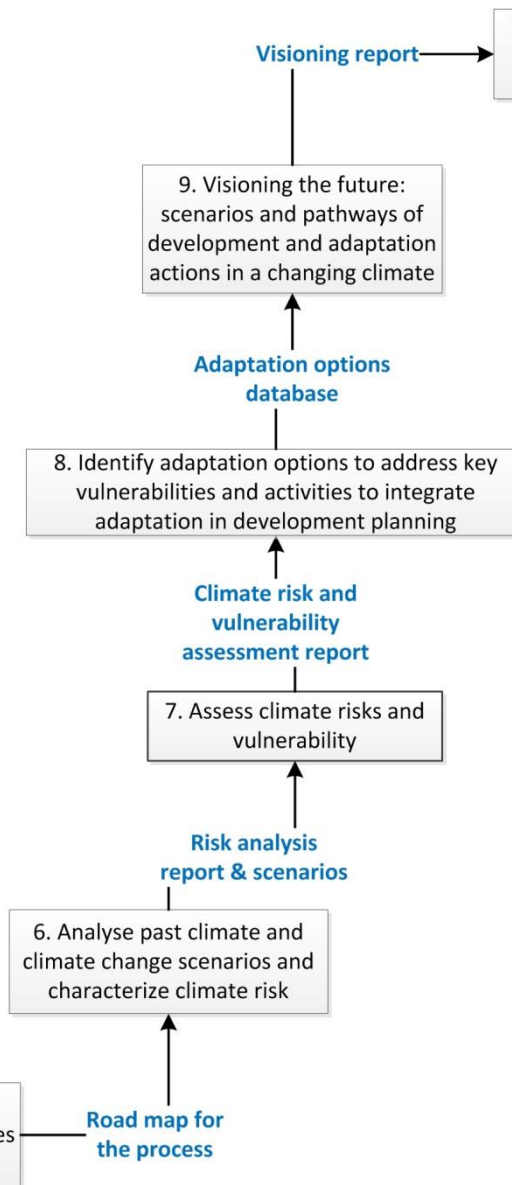


# Sample process to formulate and implement NAPs

## Element A: Lay the groundwork and address gaps

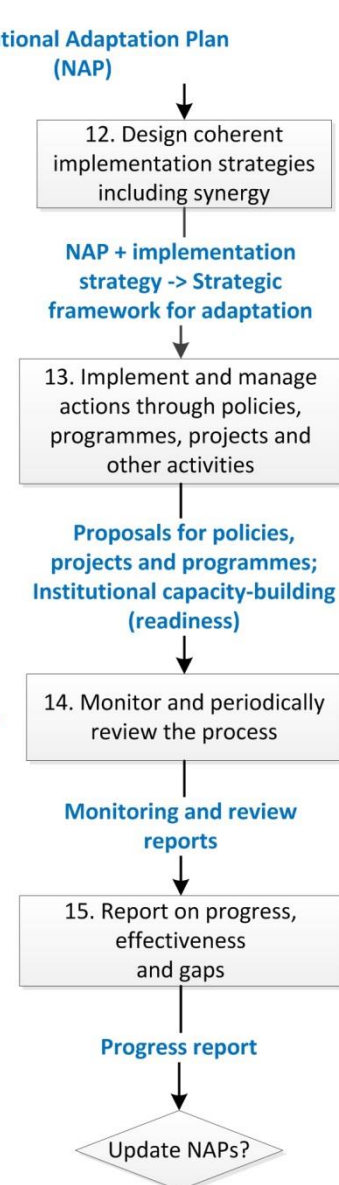


## Element B: Preparatory elements



## Element C: Implementation strategies

## Element D: Reporting, monitoring and review



## Examples of assessments under NAPs that would require detailed climate data/information

---

•Generating climate scenarios

Risk analysis

Risk and vulnerability assessment

Economic appraisal

Implementation of adaptation solutions requiring detailed climate information e.g. dam/water flow management

Implementation of insurance solutions



## Challenges faced by the LDCs in data and information management

---

- Setting up and/or maintaining long-term data collection systems;
- Setting up information systems or databases to manage the data and information related to the process to formulate and implement NAPs;
- Approaches, processes and options for data analysis, management and visualization in support of the formulation and implementation of NAPs;
- Access to appropriate geospatial data management and analysis tools in managing data and information over space and time, to underpin assessments in an iterative and ongoing manner;
- Dissemination of data and information to various stakeholders to support decision-making.



## Training on NAPs

- Regional workshops planned for 2017
- To include modules addressing data and information for NAPs

## NAP Expo

- Next event planned to take place in April 2017 in Bonn
- Brings together diversity of partners to exchange on ways to advance NAPs

## NAP Central

- Universal repository of all information pertinent to NAPs including available climate data and information

## Engaging other organizations

- To coordinate efforts in providing support to the LDCs
- Through various channels: NAP technical working group, advisory groups, etc.



## **LEG Chair**

Abias Huongo  
huongoabias@gmail.com

## **Secretariat**

leghelp@unfccc.int

## **LEG webpage**

<http://unfccc.int/4727>

*Presented by: Adrian Fitzgerald, [Adrian.Fitzgerald@dfa.ie](mailto:Adrian.Fitzgerald@dfa.ie)*

