



<http://gcos.wmo.int>



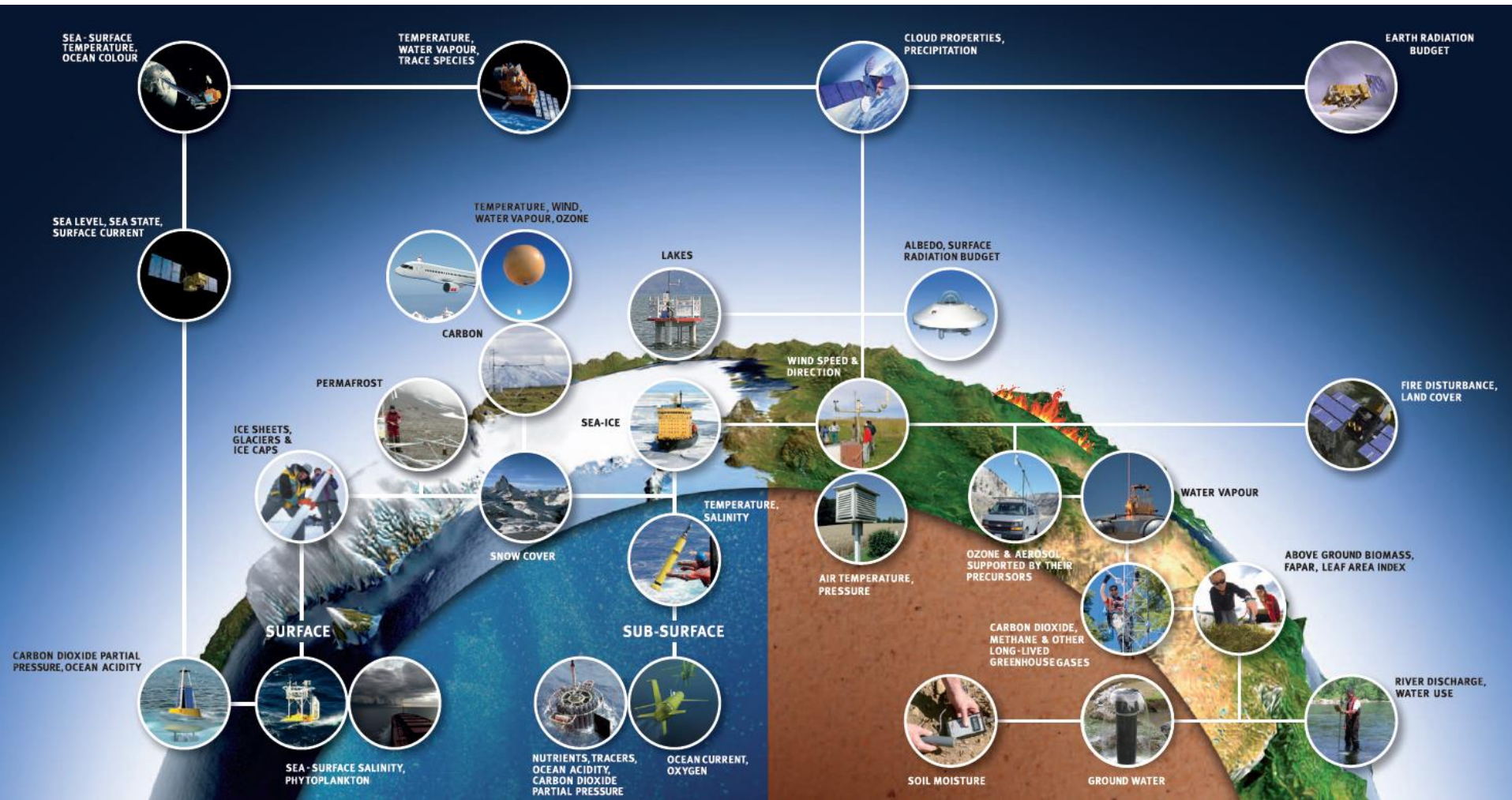
ICSU  
International Council for Science



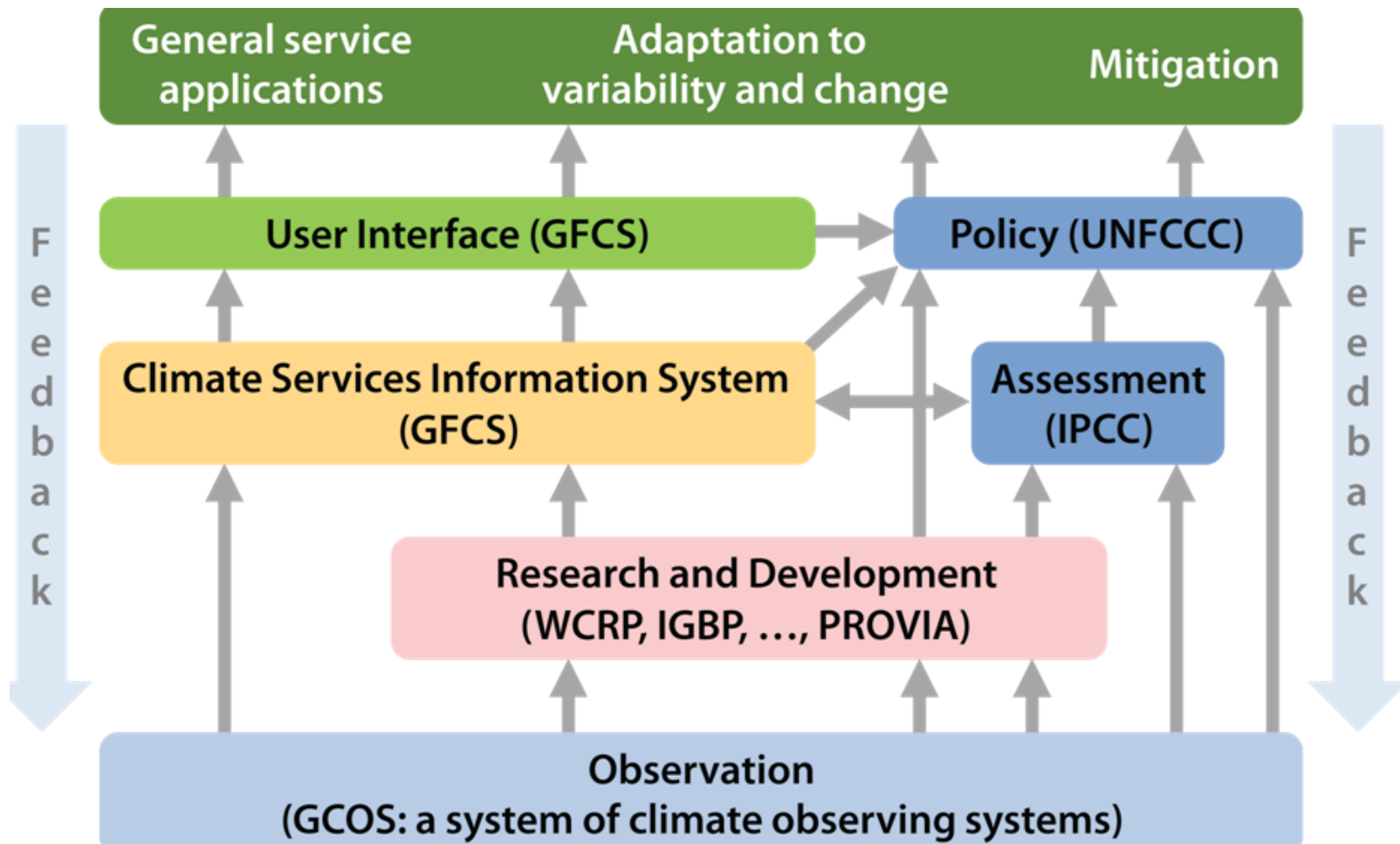
# Report from the joint GCOS/GOFC-GOLD Workshop on 'Observations for Climate Change Mitigation'

Carolyn Richter, Director, GCOS Secretariat  
SBSTA40 – Research Dialogue  
7 June 2014, Bonn, Germany

# Global Observing Systems for Climate



# Global Framework for Climate Services



# Observation requirements

---

**Common themes regarding observation requirements for both adaptation and mitigation to climate change identified by the GCOS community:**

- ✦ Need for higher spatial and temporal resolution;
- ✦ Need to focus on regions where climate change will have significant sector effects and where there are vulnerable populations;
- ✦ Need to develop infrastructure and governance to support sustained data rescue;
- ✦ Need to support research initiatives such as PROVIA and Future Earth.

# Observation requirements for mitigation



<http://gcos.wmo.int>



GCOS, in collaboration with the Land Cover Project Office from the Global Observation for Forest Cover and Land Dynamics (GOFC-GOLD), has organized an international workshop to consider ***the climate observation requirements to support mitigation to climate change mitigation.***

✦ ***Focus on Land Use (Agriculture) and Forest***

✦ ***Representatives from UNFCCC, FAO, ICRAF, ESA, IPCC, etc.***

## GCOS Workshop on Observations for Climate Change Mitigation

Geneva, Switzerland  
5–7 May 2014

Co-sponsored by the Land Cover Project Office of the Global Observation for Forest Cover and Land Dynamics (GOFC-GOLD) Programme



GCOS-185

Workshop website:

<http://www.wmo.int/pages/prog/gcos/index.php?name=ObservationsforMitigation>





# Observations for climate change mitigation

- ✦ What **kinds of data** are required to improve mitigation design, implementation and impact assessment?
- ✦ How do **existing networks** need to be improved in order to derive information to design and implement mitigation measures?
- ✦ Which are the **regions in particular need**?
- ✦ On **which scale** should mitigation measures be assessed, and which sort of observational scale should be requested?
- ✦ With regard to the list of ECVs and available products in the CEOS-CGMS ECV inventory, what **gaps** do currently exist in data provision?



*Even when it's raining data,  
there is an information drought.*

# Next Steps – Strategy on evolving data needs for mitigation

---

- ✦ Identification of evolving data needs for different sectors: forest related (REDD+), NAMA related, cross-cutting, etc.
- ✦ Current ECV activities are not targeted for land-based mitigation → Need for revision of ECV actions, and potential amendment.
- ✦ Generating a full global land use map that tracks the change over time, using the six IPCC land use categories (forest land, cropland, grazing land, wetlands, settlements, other land).
- ✦ Development of a consistency among mitigation-relevant (terrestrial) ECVs for IPCC-GPG-based estimation and UNFCCC reporting.

**We need to foster the dialogue between stakeholders:**

**- UNFCCC and Parties, GCOS, IPCC**

**We need to map stakeholder' s requirements.**



**“The 5th Assessment Report of IPCC – Response from GCOS and UNFCCC on Uncertainties in Observations and Needs for Research – Focus on impacts, adaptation and vulnerability”**

# Take-away Messages

---

- **Coordinated, comprehensive observations are the nervous system of any Earth information system.**
- **Observations are needed by global and regional models to support and verify climate models to reliably assess present extremes and projections needed to make the right adaptation decisions.**
- **Data driven analysis and synthesis using an agreed framework such as the IPCC GPG, is an evolving requirement for ECV monitoring in the context of mitigation.**