


The SUSTAINABLE City

*In-session workshop on mitigation SBSTA 26
Bonn, Germany
2007-05-11*

*Henrik Berg von Linde,
Senior Chief Architect of SWECO*



A SWEDISH Partnership Initiative

A photograph of a modern urban street scene. In the foreground, a man in a dark t-shirt and a woman in a red sweater are walking away from the camera, holding hands. The street is paved with light-colored cobblestones. To the left, there is a modern building with a red brick facade and large glass windows. Several people are walking on the sidewalk. In the background, there are more buildings, trees, and a body of water under a clear blue sky.

Structure of my speech:

The Purpose and the main Features of the Concept

"Ecological Planning" in practice

The Eco-cycle Model

Conclusions

The purpose of the concept (1)

To gather, analyze, convey and apply the Swedish knowledge base and experiences from research, business sector and public sector within the environmental technology field in an urban and international context



Hammarby Sjöstad, Stockholm



R&D projects



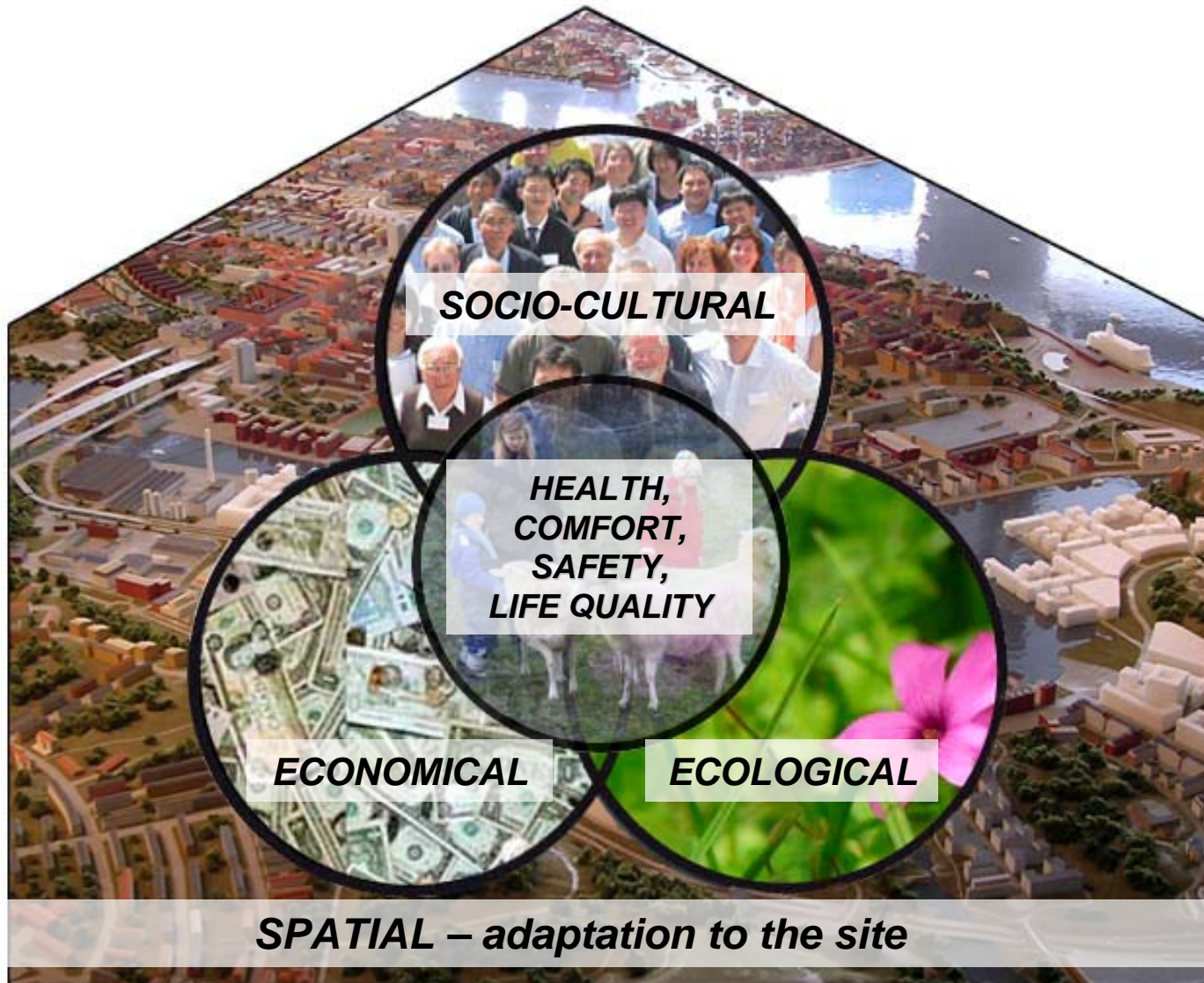
Bo 01 Malmö



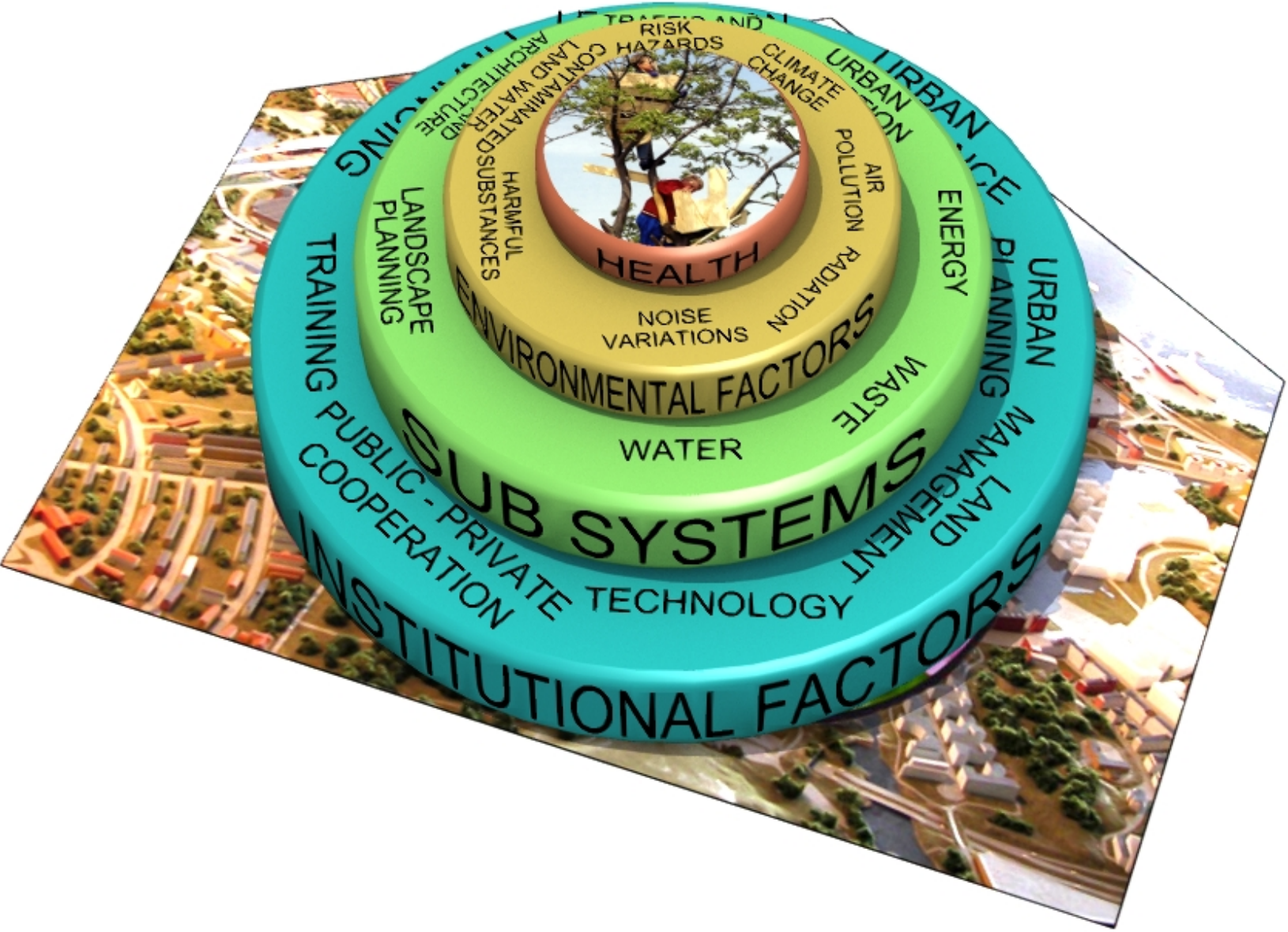
Gårdsten, Gothenburg

The purpose of the concept (2)

To develop a HOLISTIC CONCEPT for sustainable urban development

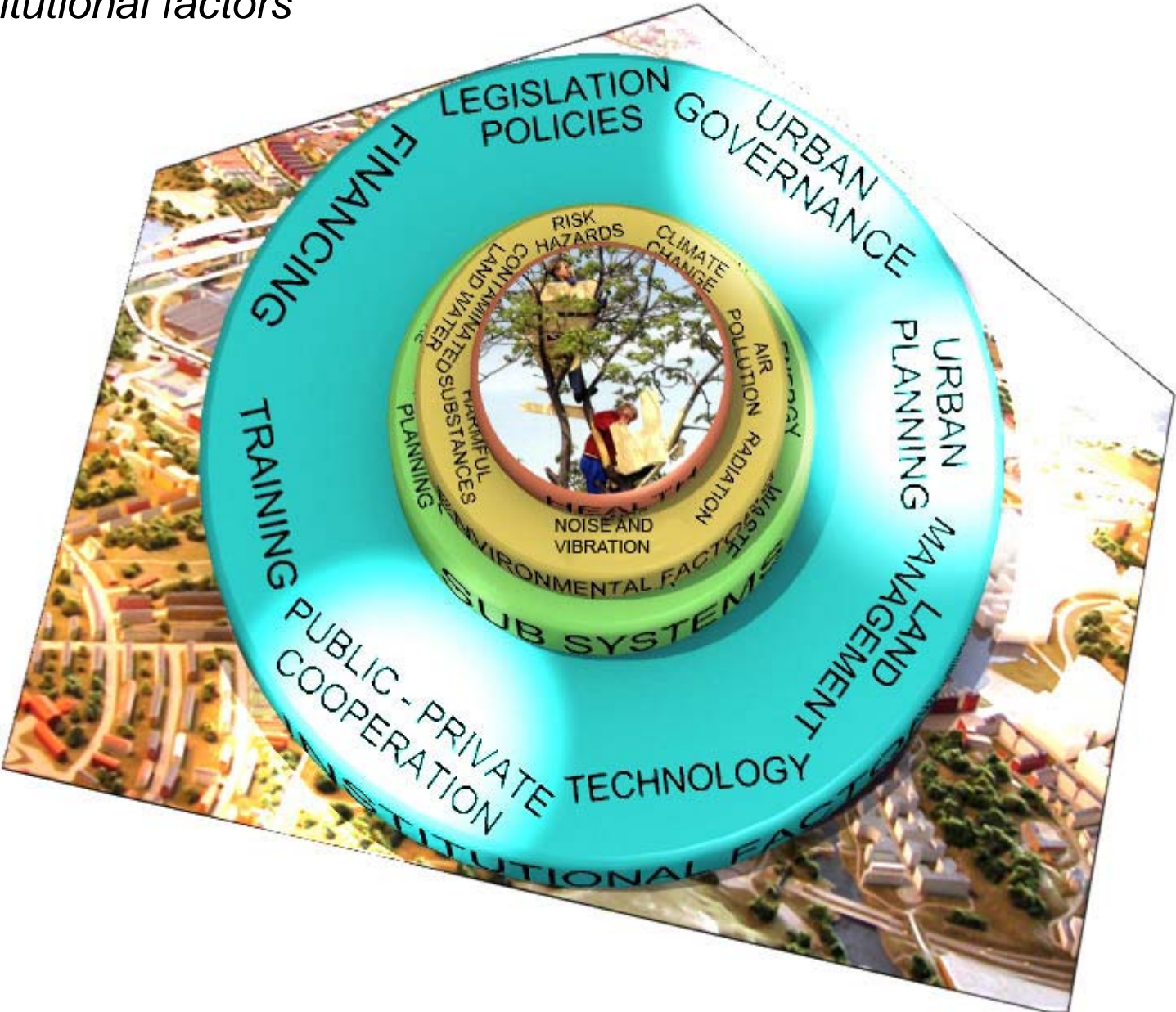


The Conceptual Model *An integrated and multidisciplinary approach with focus on environmental factors in an urban context*



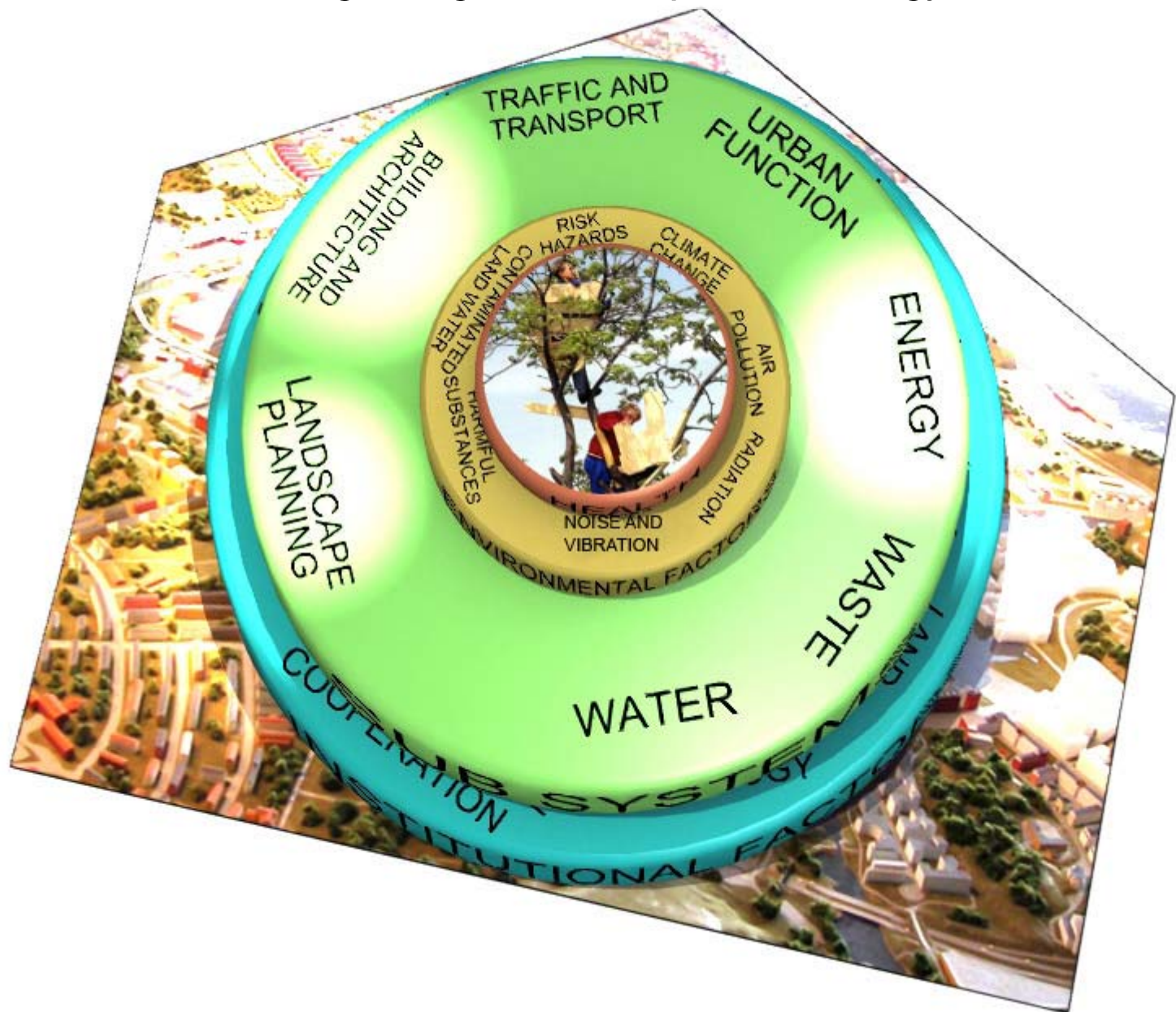
Institutional factors

Highlighting urban planning, urban governance, public-private partnership and other institutional factors

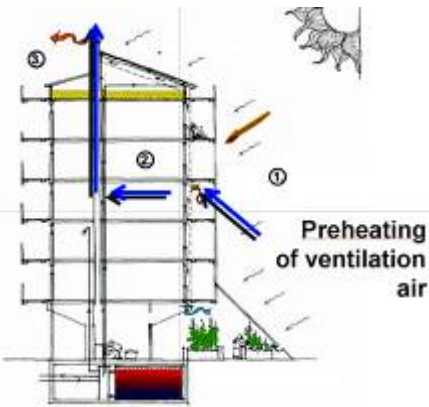


Infrastructure systems (1)

Synergies between building design, landscape and energy



Planning of the city and its buildings with regard to sun and wind



Energy conscious design



Utilization of appropriate technology for obtaining low energy use

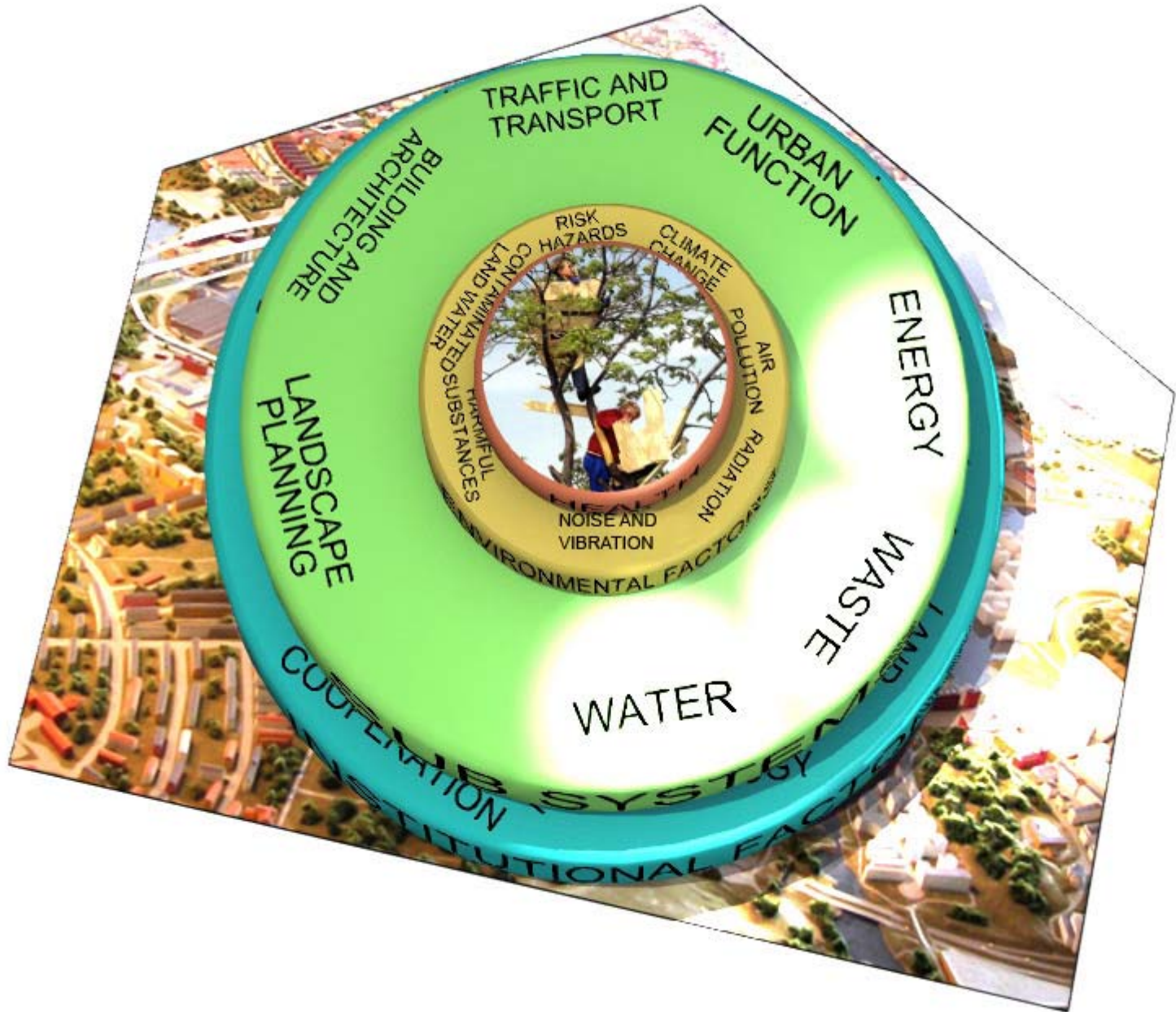


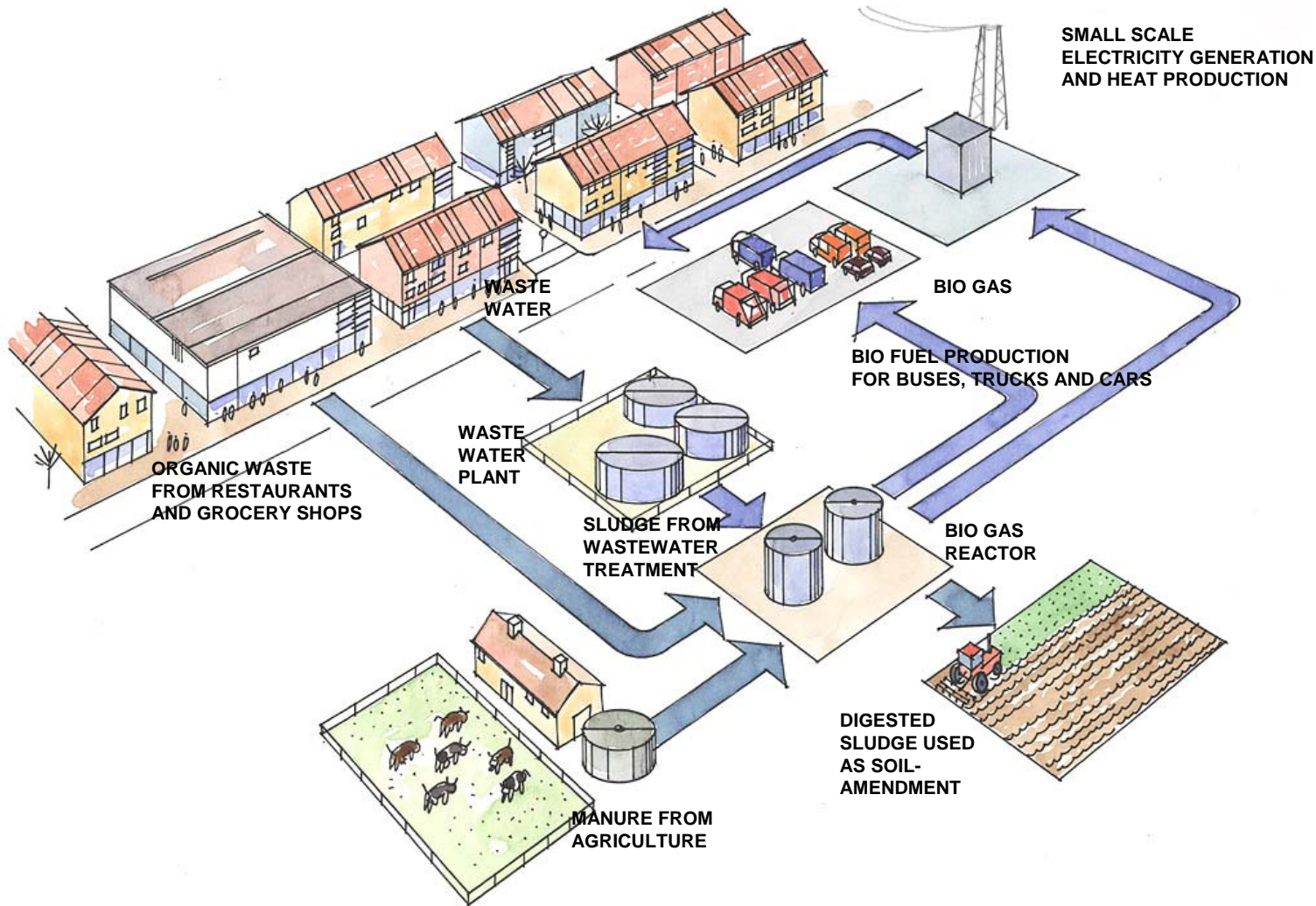
Minimization of energy demand through architectural design – "passive" buildings

Utilization of renewable energy sources – passive and active solar systems, wind power, geothermal

Infrastructure systems (2)

Synergies between energy, waste and water

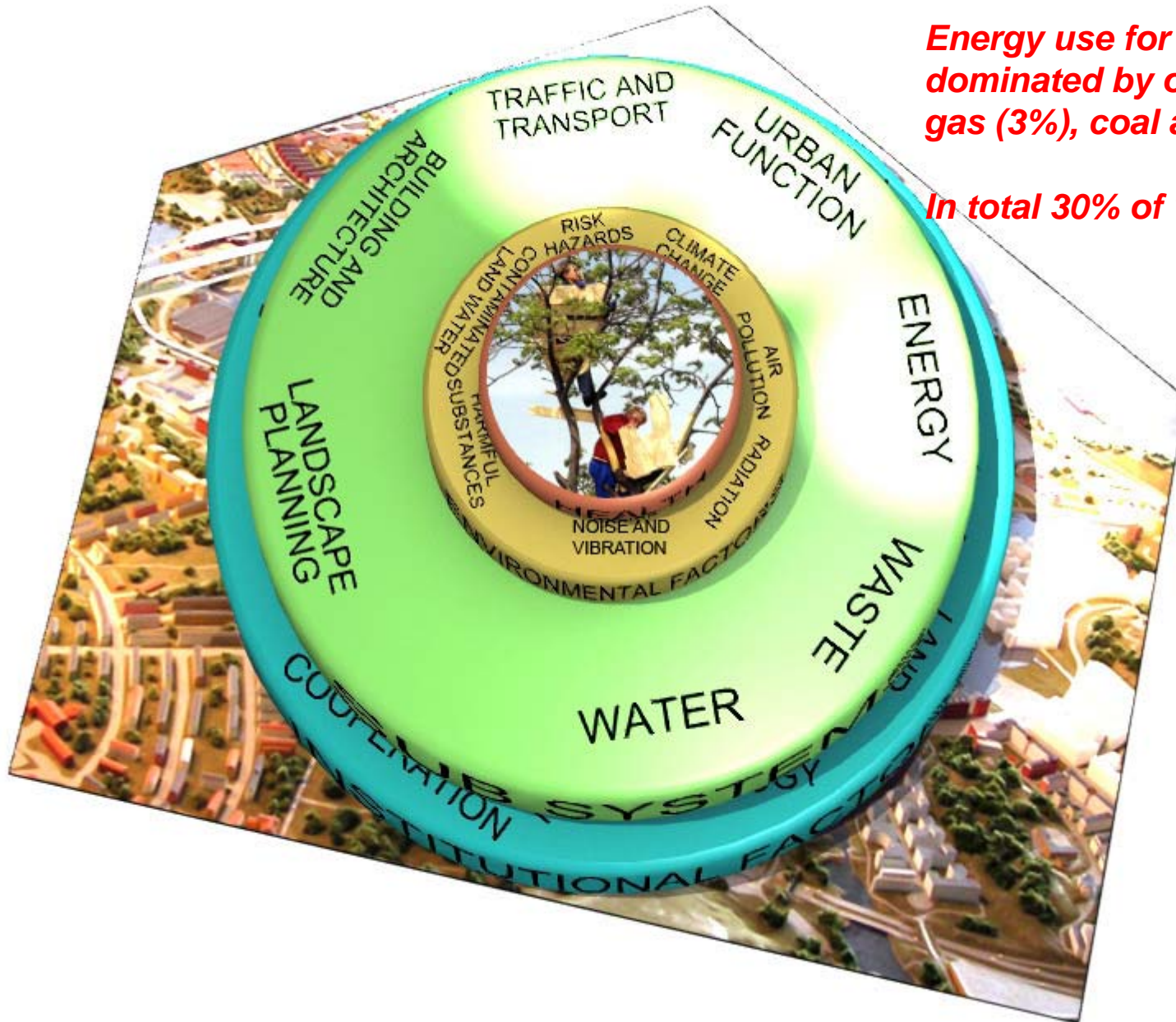




**INTEGRATED RESOURCES MANAGEMENT PRODUCTION OF BIOGAS
FROM DIGESTED WASTE AND WASTE WATER SLUDGE
SYNERGIES BETWEEN WATER & SEWAGE, WASTE AND ENERGY**

Structure systems (3)

energies between transportation, urban functions/land-use and energy



Energy use for transportation is dominated by oil (95%), natural gas (3%), coal and electricity (2%).

In total 30% of world energy use.

Sustainable transportation features – Hammarby sjöstad, Stockholm

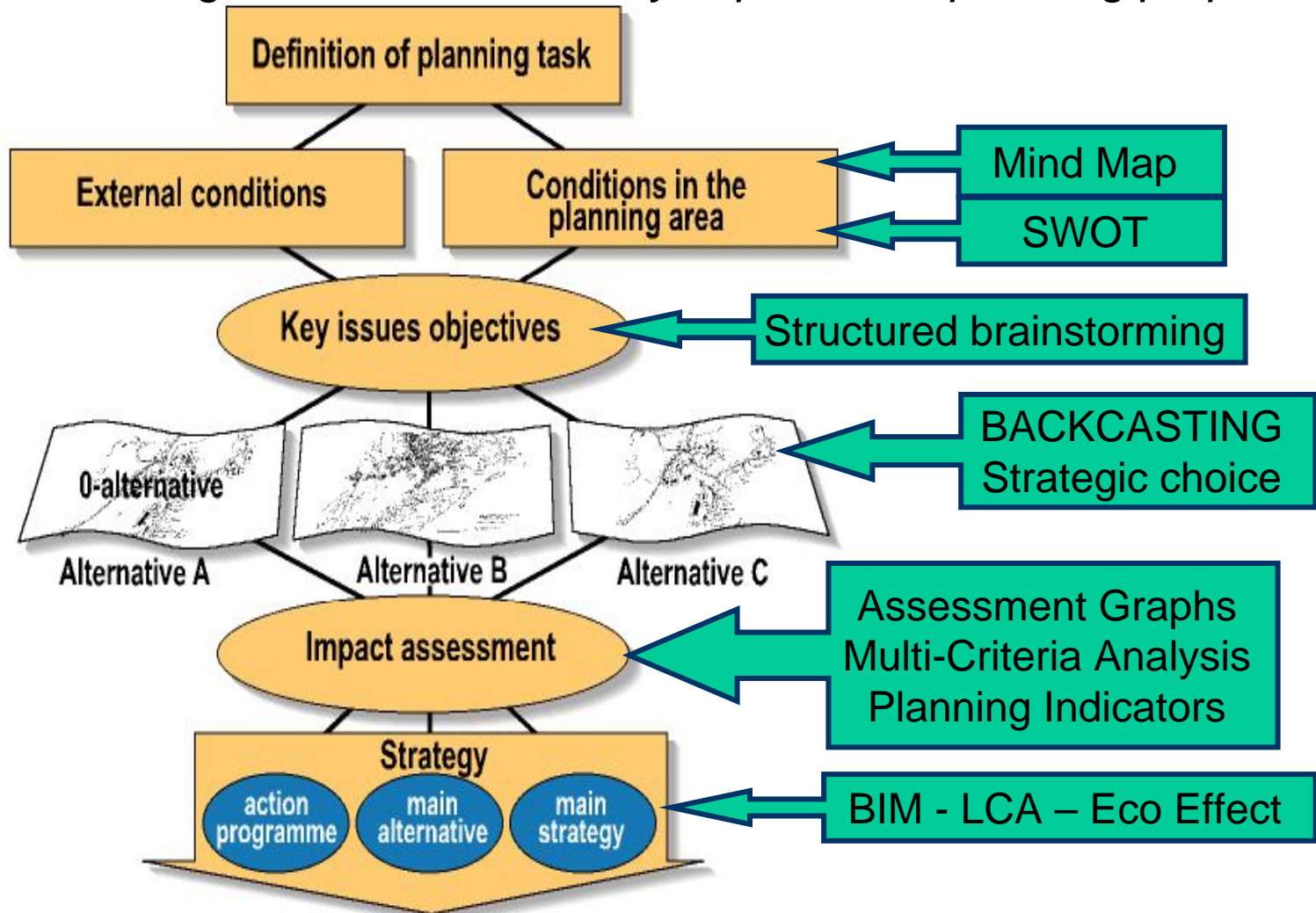


Car pool with 45 environmental cars (350 households are associated)

Public transportation based on *light-rail* and *biogas buses* as well as a *biogas fuelled ferry*

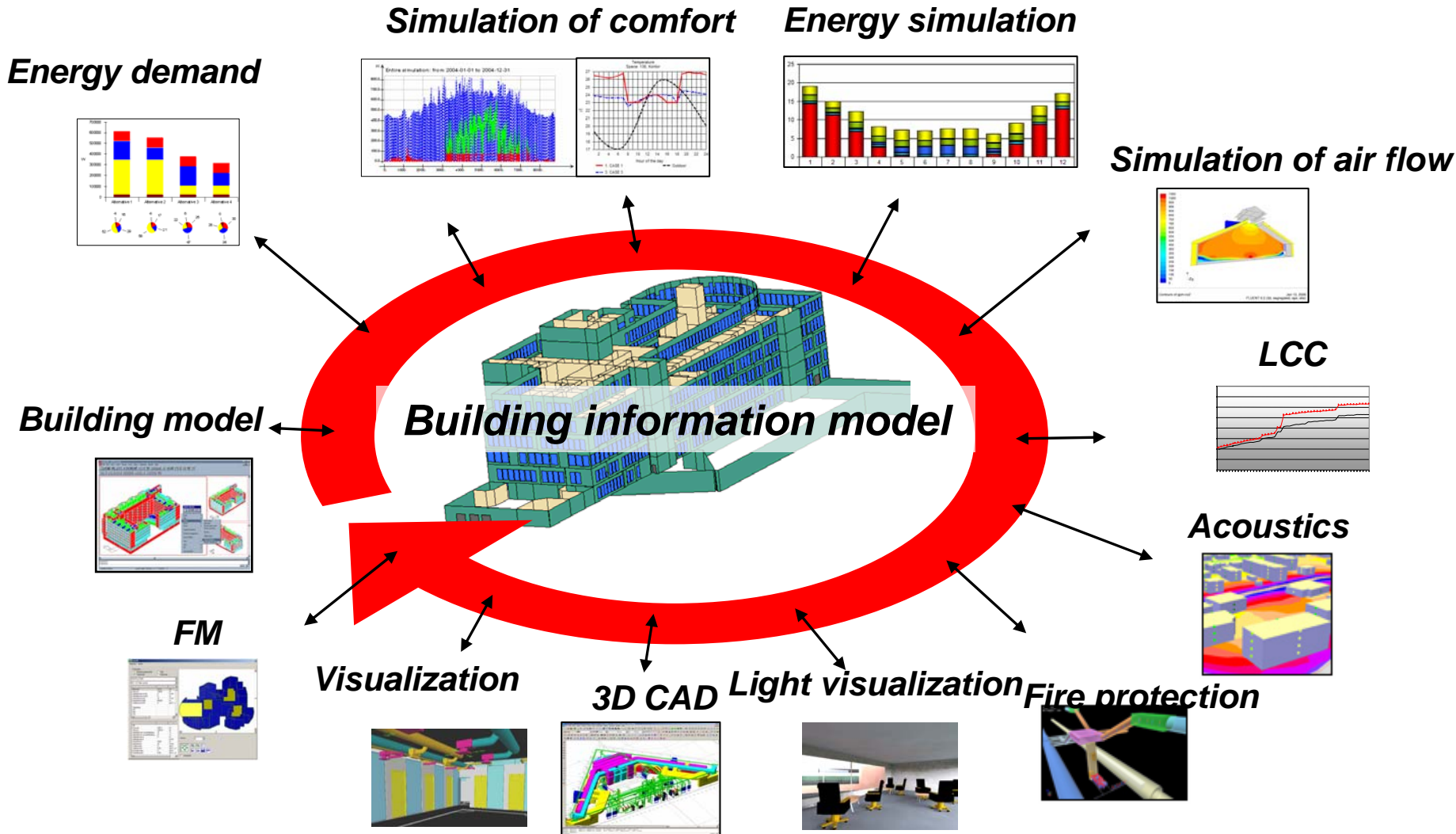


A systematic working procedure supported by planning tools in order to promote the integration of sustainability aspects into planning proposals



*Source: Sustainable community, R&D project phase 1, Swedish Energy Agency
Swedish Environmental Protection Agency the SAMS-project*

Integrated tools for sustainable building design



Source: Gustav Jansson, SWECO Theorells

Vision & goals:

HOLISTIC APPROACH

• **Spatial** sustainability

• **Ecological** sustainability

• **Economical** sustainability

• **Social** sustainability

Urban typology & design: "ECOLOGICAL" PLANNING

• Cultural heritage & local context

• Adoption to & respect for the site

• Resource effective layout

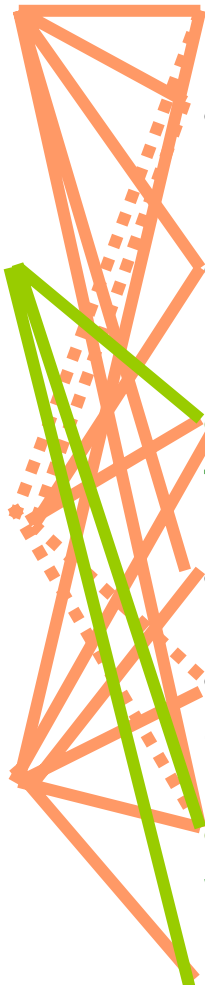
• **Economized transportation**

• Streetscape

• Functional integrated development

• **Greenscape & waterscape**

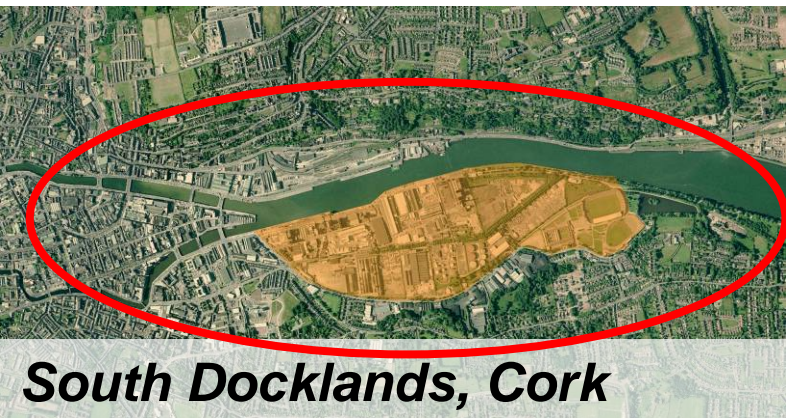
• **ECO-CYCLE MODEL**



Examples of integrated planning of "Model Cities" & Sustainability Reviews according to the Sustainable City concept



Toronto waterfront



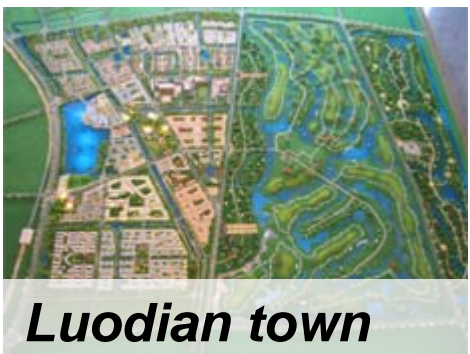
South Docklands, Cork



Baltic Pearl



Buffalo City



Luodian town



Dongli Lake

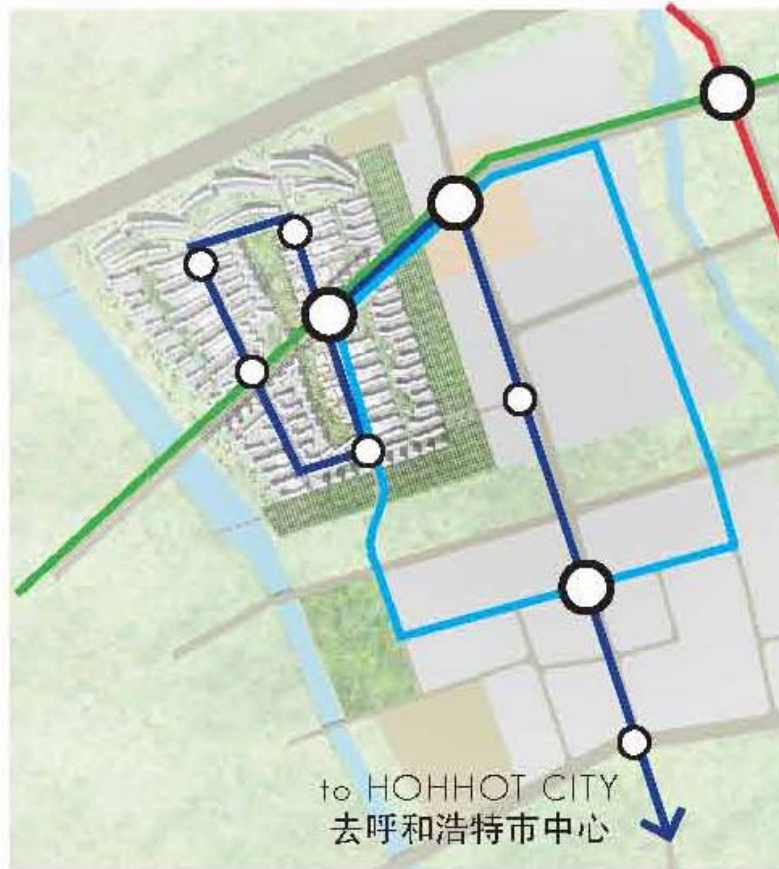


Hohhot Wuhai





4.4 Landscape and water

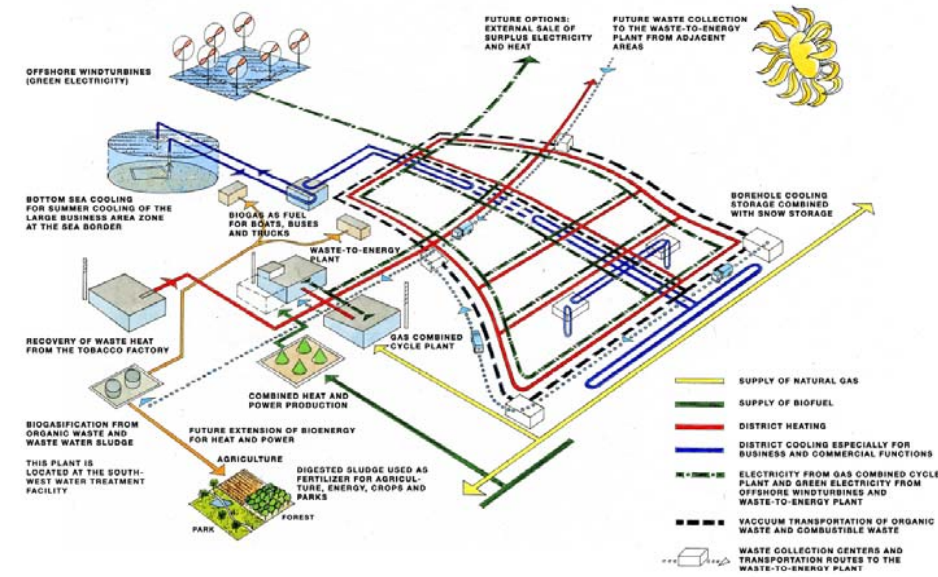
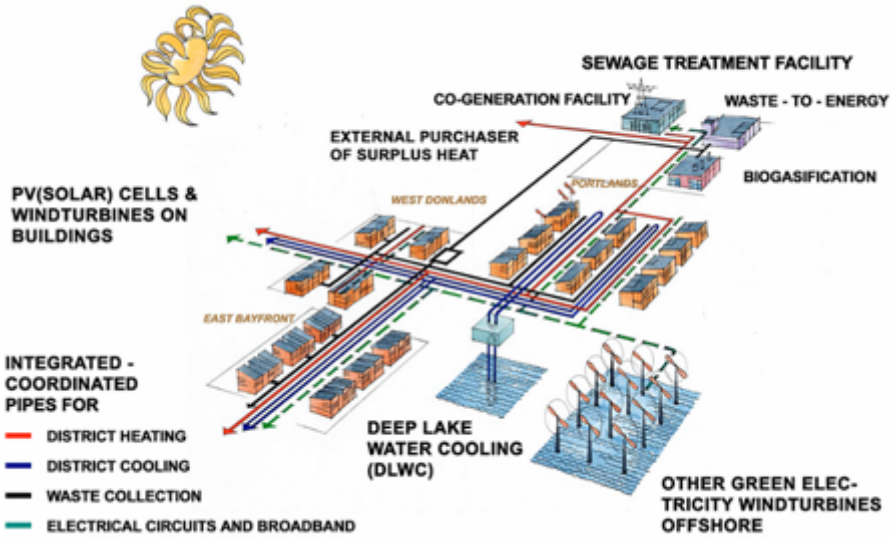
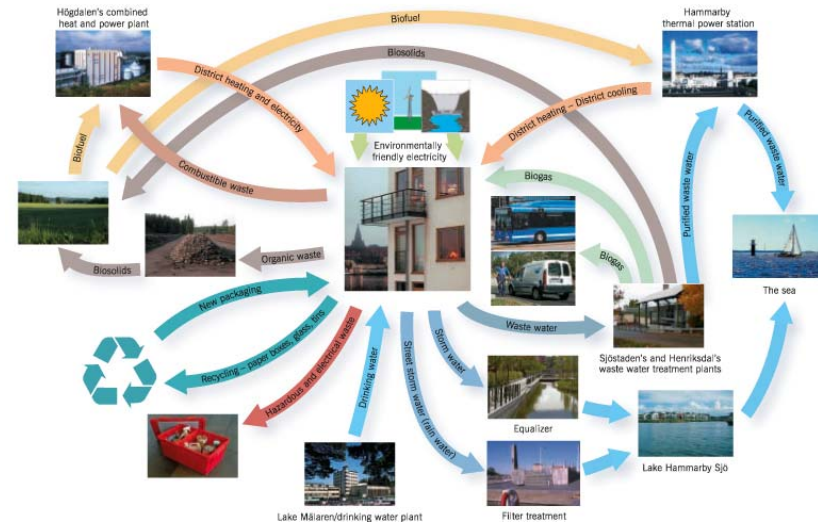


Legend

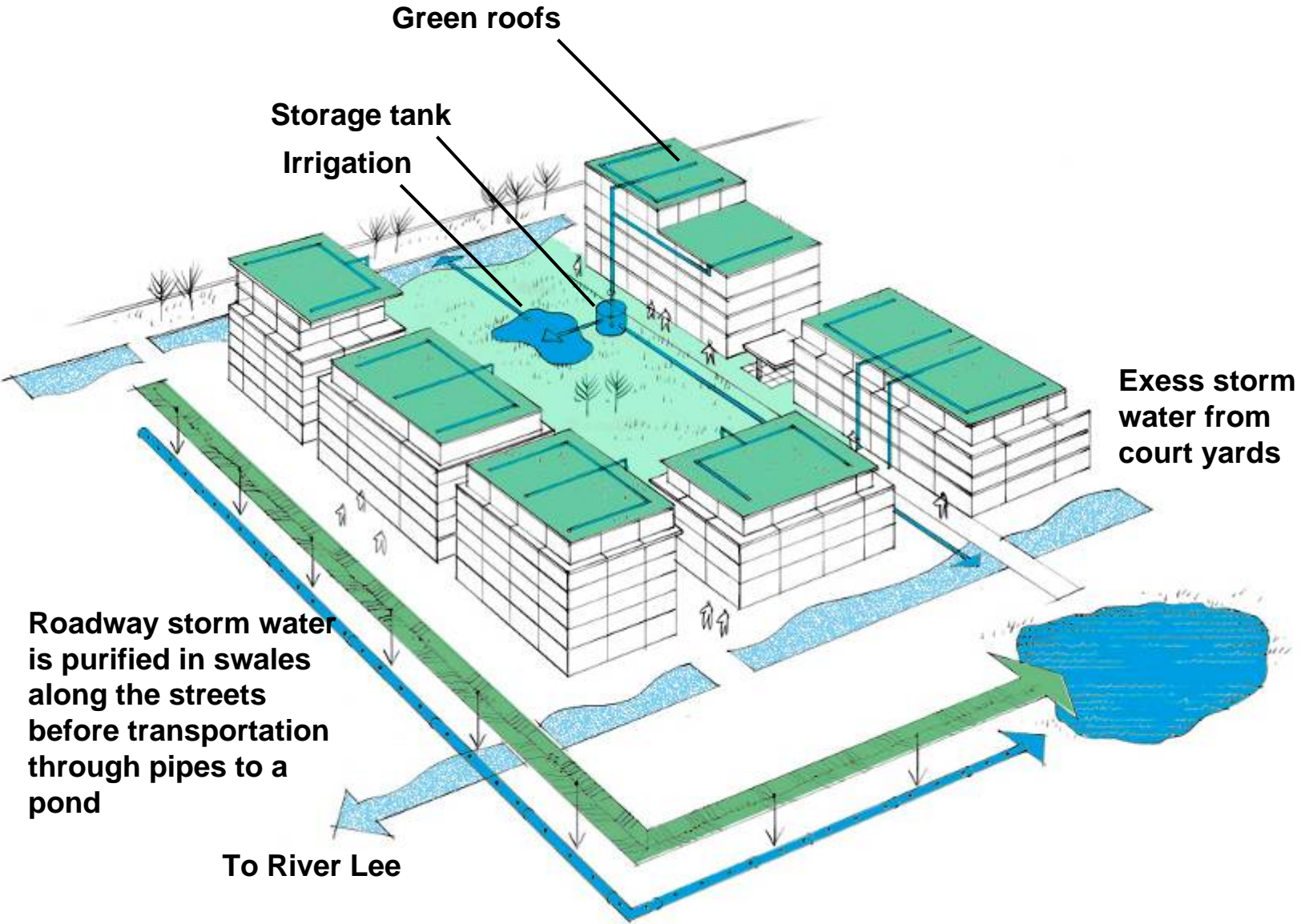
- 郊区公交线
Suburban line
- “成吉思汗大街环城”公交线
Genghis Khan Road arde line
- “绿城”公交线
“Green City” local arde line
- 去市中心快速公交线
Direct bus line to city center
- 主公交站
Major bus stop
- 次公交站
Bus stop

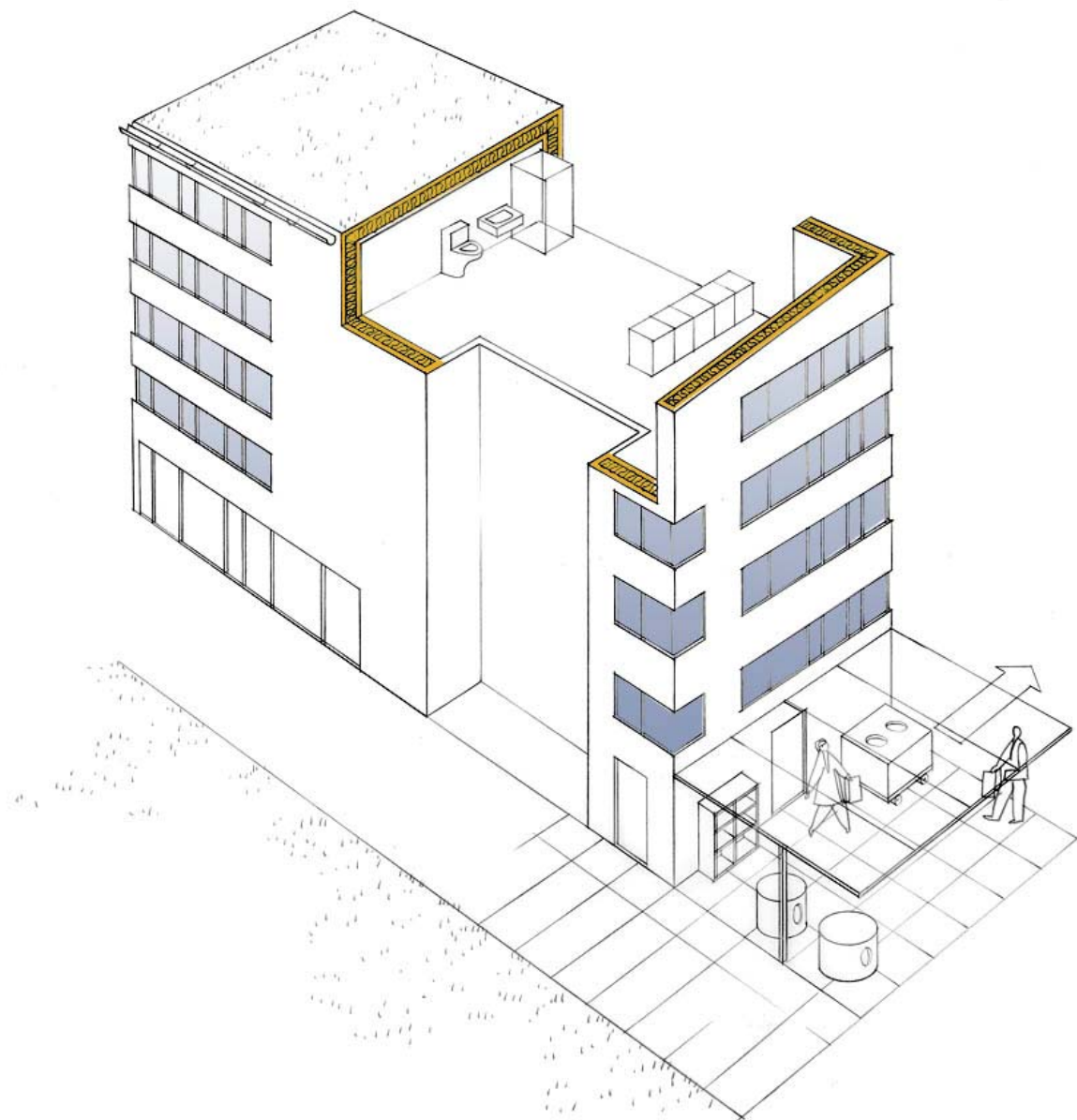


The Eco-cycle Model
 is an instrument
 to understand, develop and communicate
 sustainable urban development
 and sustainable building design









LOW ENERGY DEMAND

- High insulation of walls, windows and roofs, reduced cold bridges, airtight building envelope, controlled ventilation and heat exchange

ENERGY SUPPLY

- Geothermal cooling and Low temperature heating
- Comfort cooling (non-residential)
- Heat pump: Hot tap water
- Pre-heated ventilation air
- Heat pump utilizing exhaust air for tap warm water and/or supply air (optional)

WATER SUPPLY

- from city net

BLACK WATER

- from wc and slurry from waste-disposer

GREY WATER

- from bath and kitchen

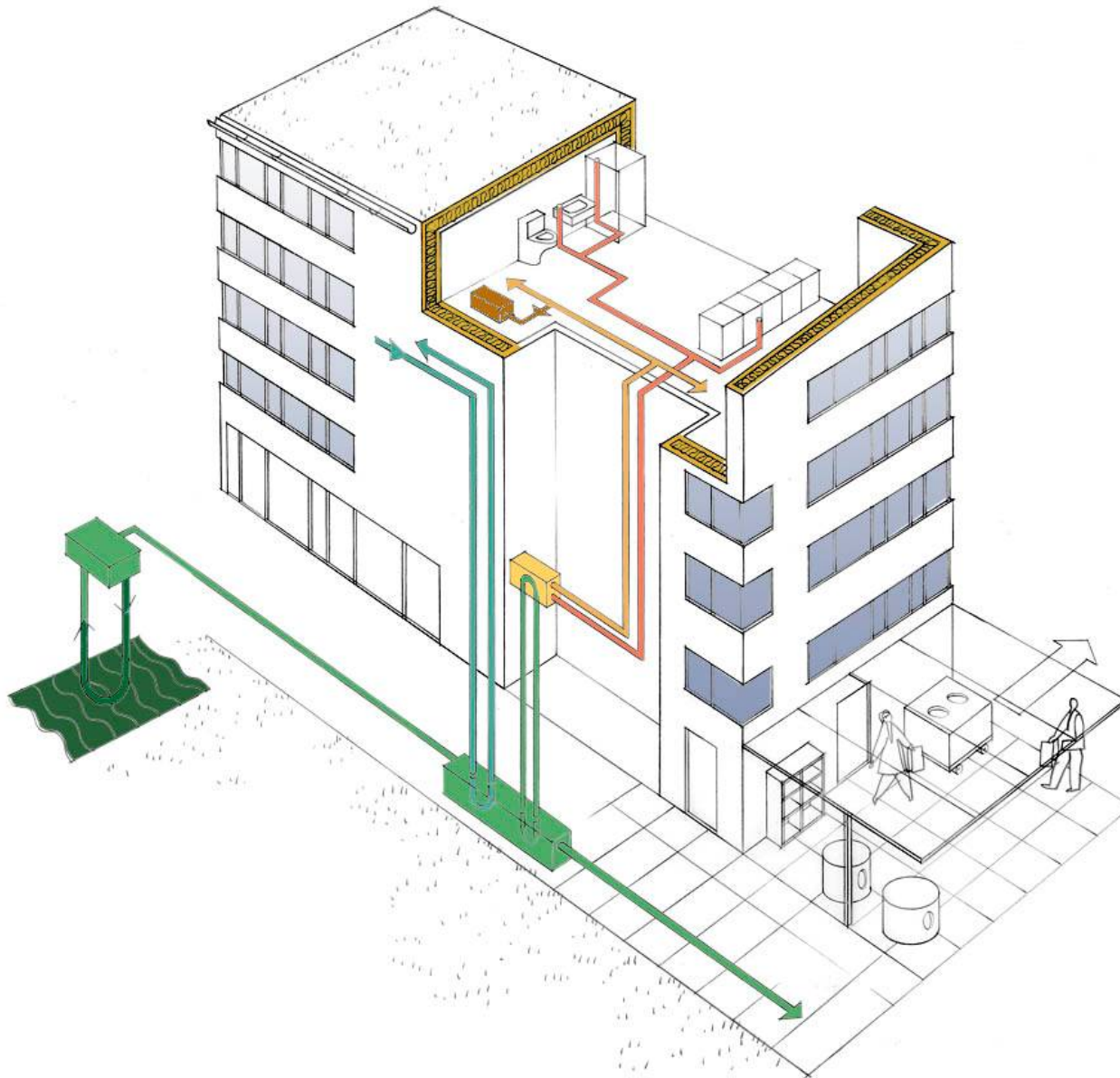
STORM WATER

- Reuse for wc and dishwashers

WASTE

- Vacuum transportation

ALL SYSTEMS



LOW ENERGY DEMAND

- High insulation of walls, windows and roofs, reduced cold bridges, airtight building envelope, controlled ventilation and heat exchange

ENERGY SUPPLY

- Geothermal cooling and Low temperature heating
- Comfort cooling (non-residential)
- Heat pump: Hot tap water
- Pre-heated ventilation air
- Heat pump utilizing exhaust air for tap warm water and/or supply air (optional)

WATER SUPPLY

- from city net

BLACK WATER

- from wc and slurry from waste-disposer

GREY WATER

- from bath and kitchen

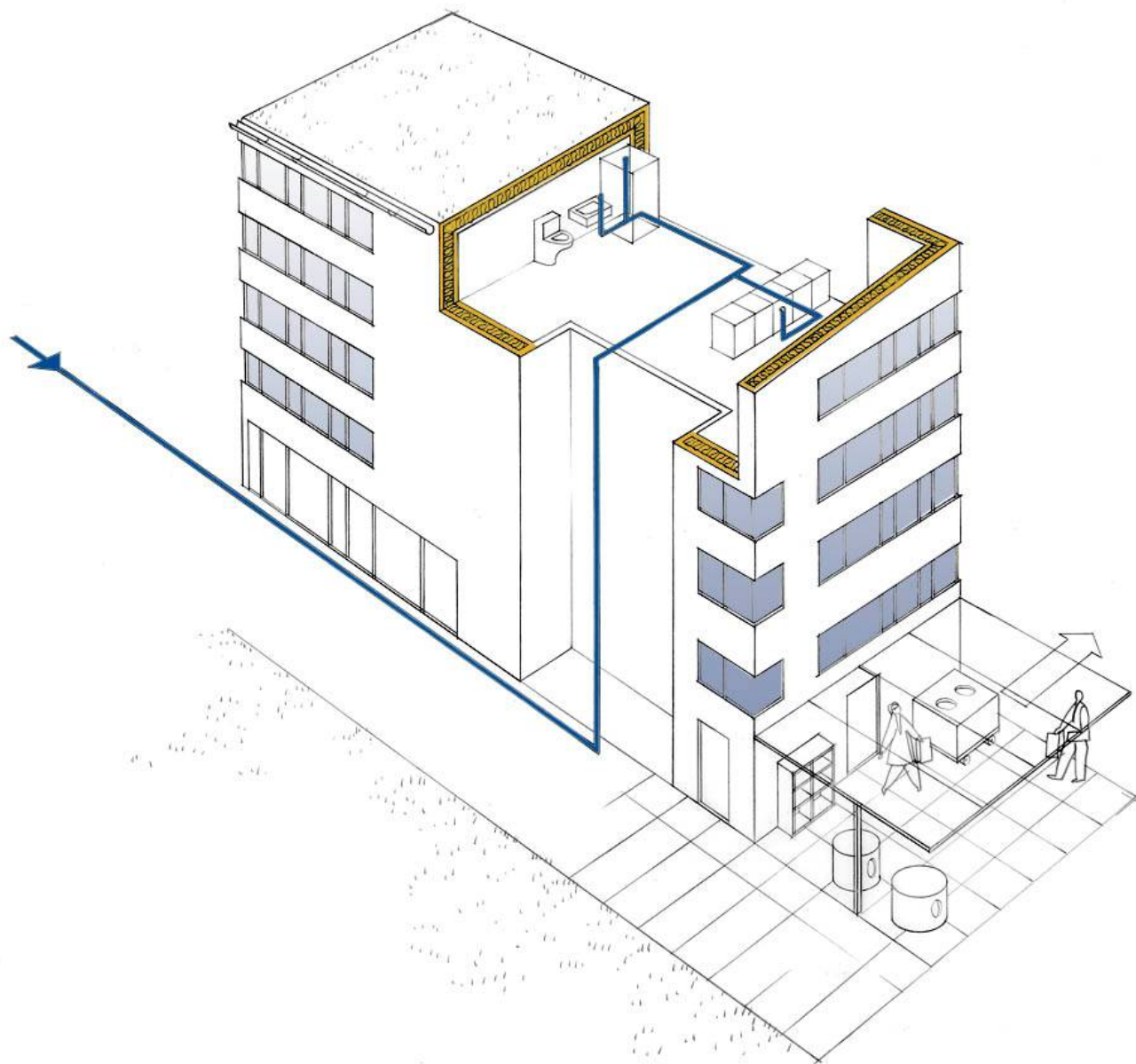
STORM WATER

- Reuse for wc and dishwashers

WASTE

- Vacuum transportation

ALL SYSTEMS



LOW ENERGY DEMAND

- High insulation of walls, windows and roofs, reduced cold bridges, airtight building envelope, controlled ventilation and heat exchange

ENERGY SUPPLY

- Geothermal cooling and Low temperature heating
- Comfort cooling (non-residential)
- Heat pump: Hot tap water
- Pre-heated ventilation air
- Heat pump utilizing exhaust air for tap warm water and/or supply air (optional)

WATER SUPPLY

- from city net

BLACK WATER

- from wc and slurry from waste-disposer

GREY WATER

- from bath and kitchen

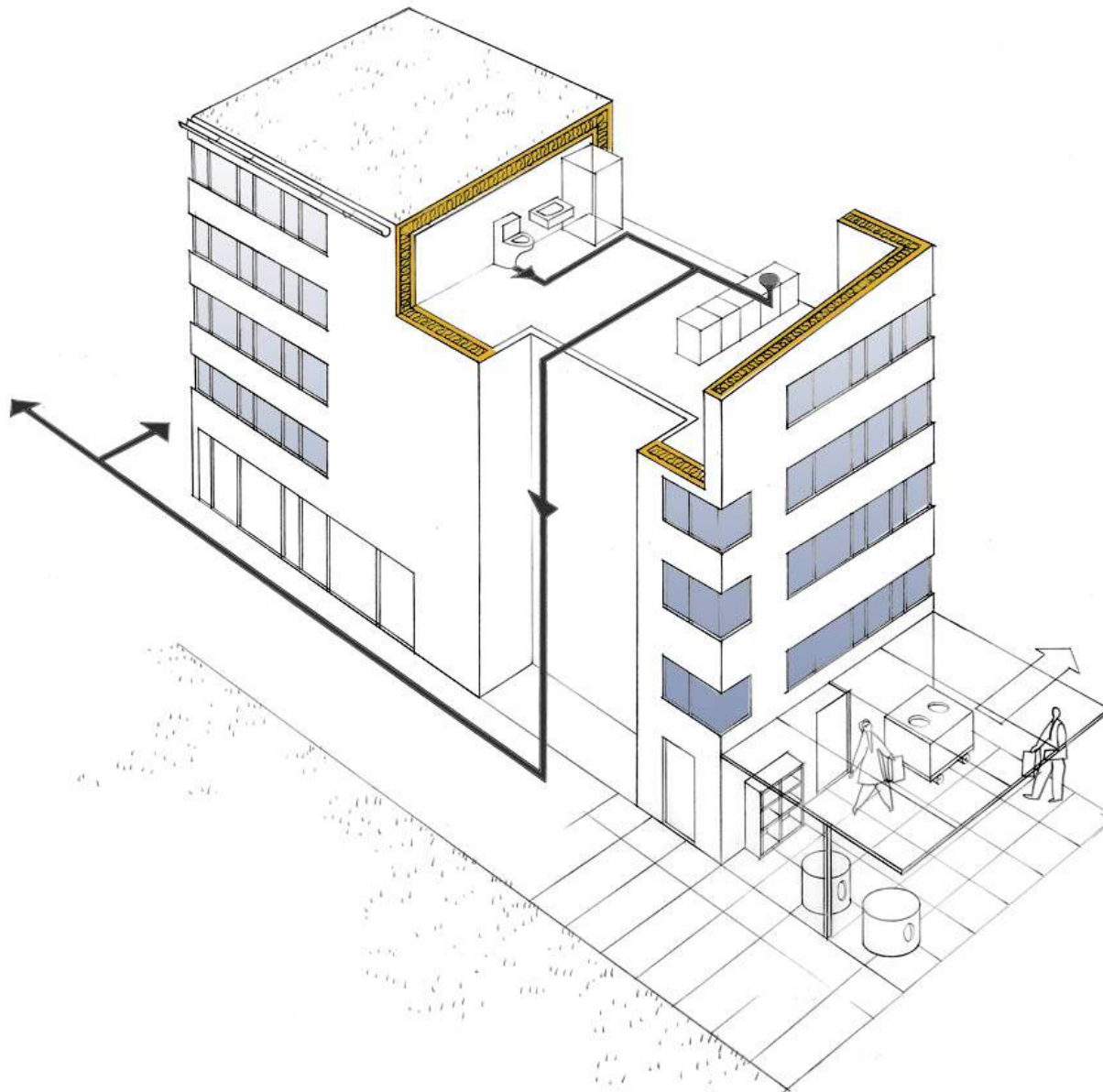
STORM WATER

- Reuse for wc and dishwashers

WASTE

- Vacuum transportation

ALL SYSTEMS



LOW ENERGY DEMAND

- High insulation of walls, windows and roofs, reduced cold bridges, airtight building envelope, controlled ventilation and heat exchange

ENERGY SUPPLY

- Geothermal cooling and Low temperature heating
- Comfort cooling (non-residential)
- Heat pump: Hot tap water
- Pre-heated ventilation air
- Heat pump utilizing exhaust air for tap warm water and/or supply air (optional)

WATER SUPPLY

- from city net

BLACK WATER

- from wc and slurry from waste-disposer

GREY WATER

- from bath and kitchen

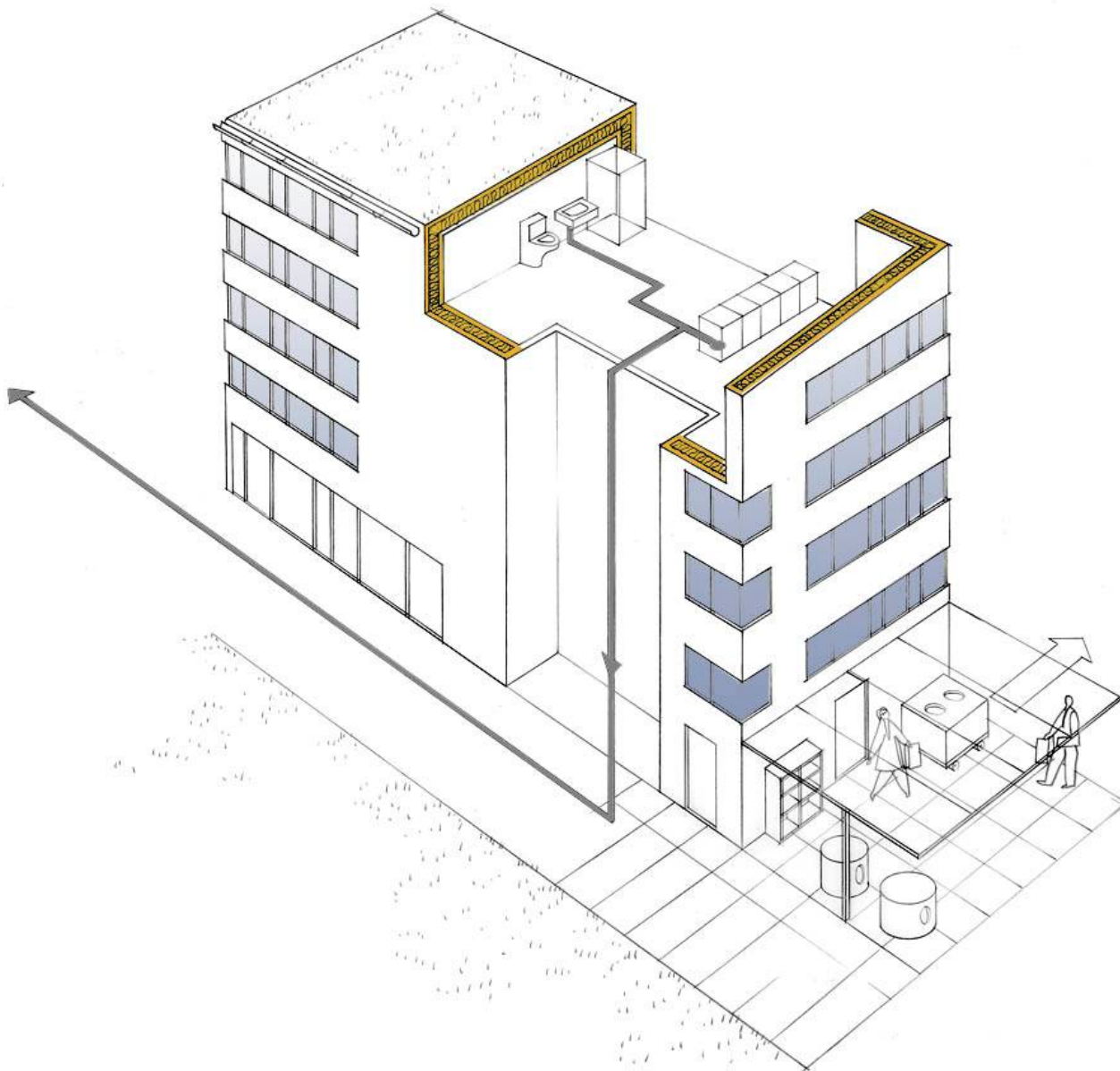
STORM WATER

- Reuse for wc and dishwashers

WASTE

- Vacuum transportation

ALL SYSTEMS



LOW ENERGY DEMAND

- High insulation of walls, windows and roofs, reduced cold bridges, airtight building envelope, controlled ventilation and heat exchange

ENERGY SUPPLY

- Geothermal cooling and Low temperature heating
- Comfort cooling (non-residential)
- Heat pump: Hot tap water
- Pre-heated ventilation air
- Heat pump utilizing exhaust air for tap warm water and/or supply air (optional)

WATER SUPPLY

- from city net

BLACK WATER

- from wc and slurry from waste-disposer

GREY WATER

- from bath and kitchen

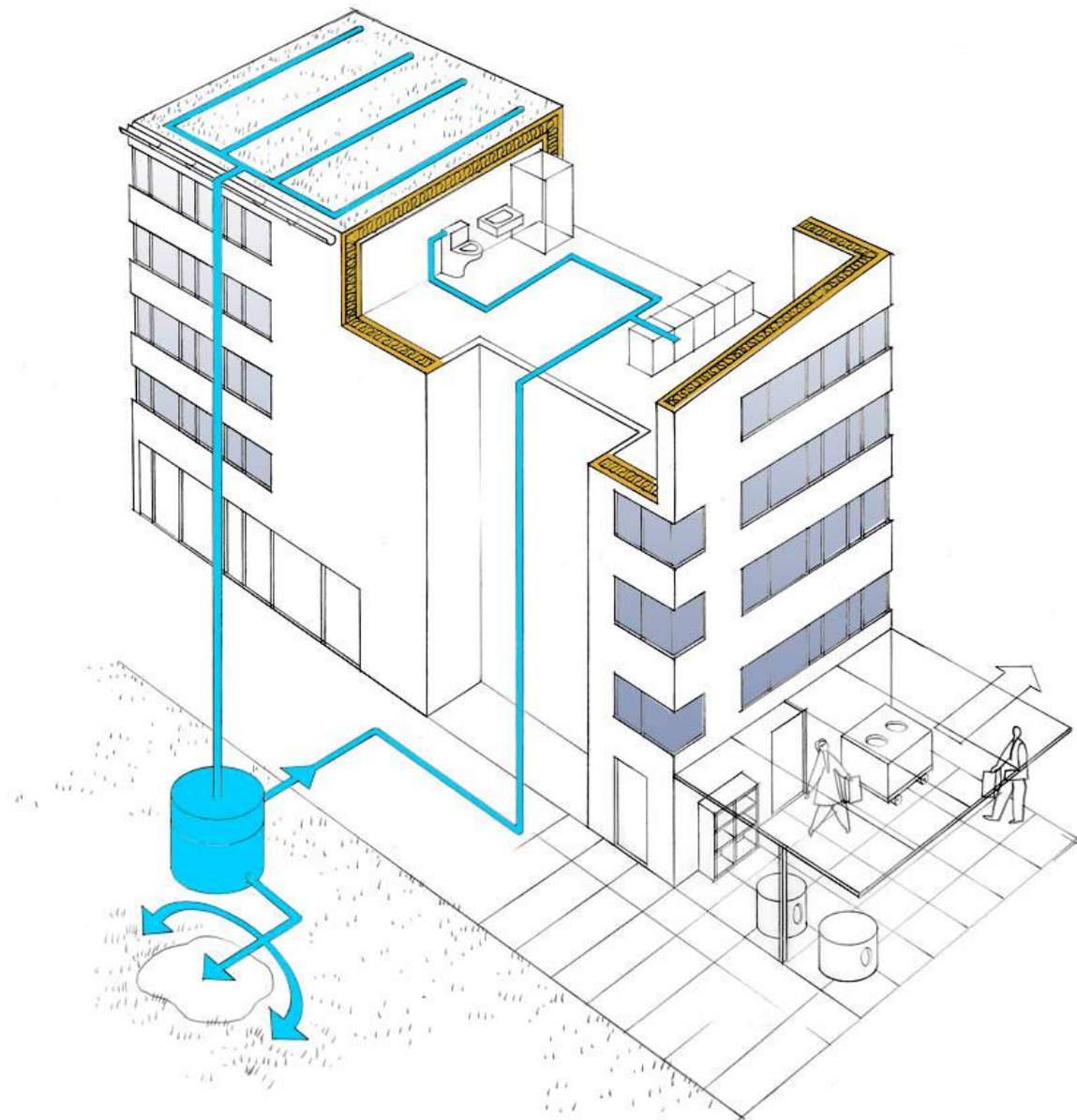
STORM WATER

- Reuse for wc and dishwashers

WASTE

- Vaccuum transportation

ALL SYSTEMS



LOW ENERGY DEMAND

- High insulation of walls, windows and roofs, reduced cold bridges, airtight building envelope, controlled ventilation and heat exchange

ENERGY SUPPLY

- Geothermal cooling and Low temperature heating
- Comfort cooling (non-residential)
- Heat pump: Hot tap water
- Pre-heated ventilation air
- Heat pump utilizing exhaust air for tap warm water and/or supply air (optional)

WATER SUPPLY

- from city net

BLACK WATER

- from wc and slurry from waste-disposer

GREY WATER

- from bath and kitchen

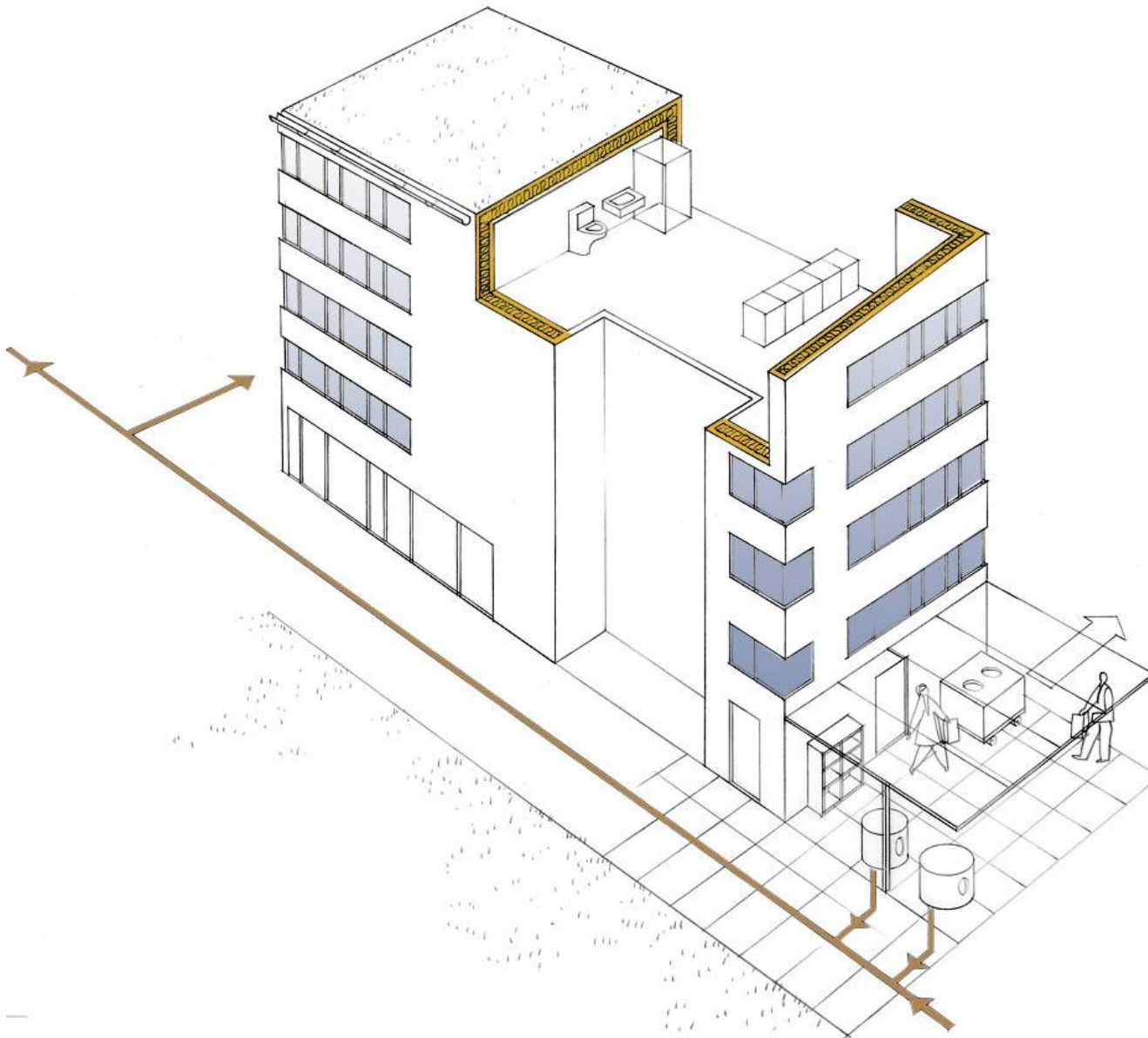
STORM WATER

- Reuse for wc and dishwashers

WASTE

- Vacuum transportation

ALL SYSTEMS



LOW ENERGY DEMAND

- High insulation of walls, windows and roofs, reduced cold bridges, airtight building envelope, controlled ventilation and heat exchange

ENERGY SUPPLY

- Geothermal cooling and Low temperature heating
- Comfort cooling (non-residential)
- Heat pump: Hot tap water
- Pre-heated ventilation air
- Heat pump utilizing exhaust air for tap warm water and/or supply air (optional)

WATER SUPPLY

- from city net

BLACK WATER

- from wc and slurry from waste-disposer

GREY WATER

- from bath and kitchen

STORM WATER

- Reuse for wc and dishwashers

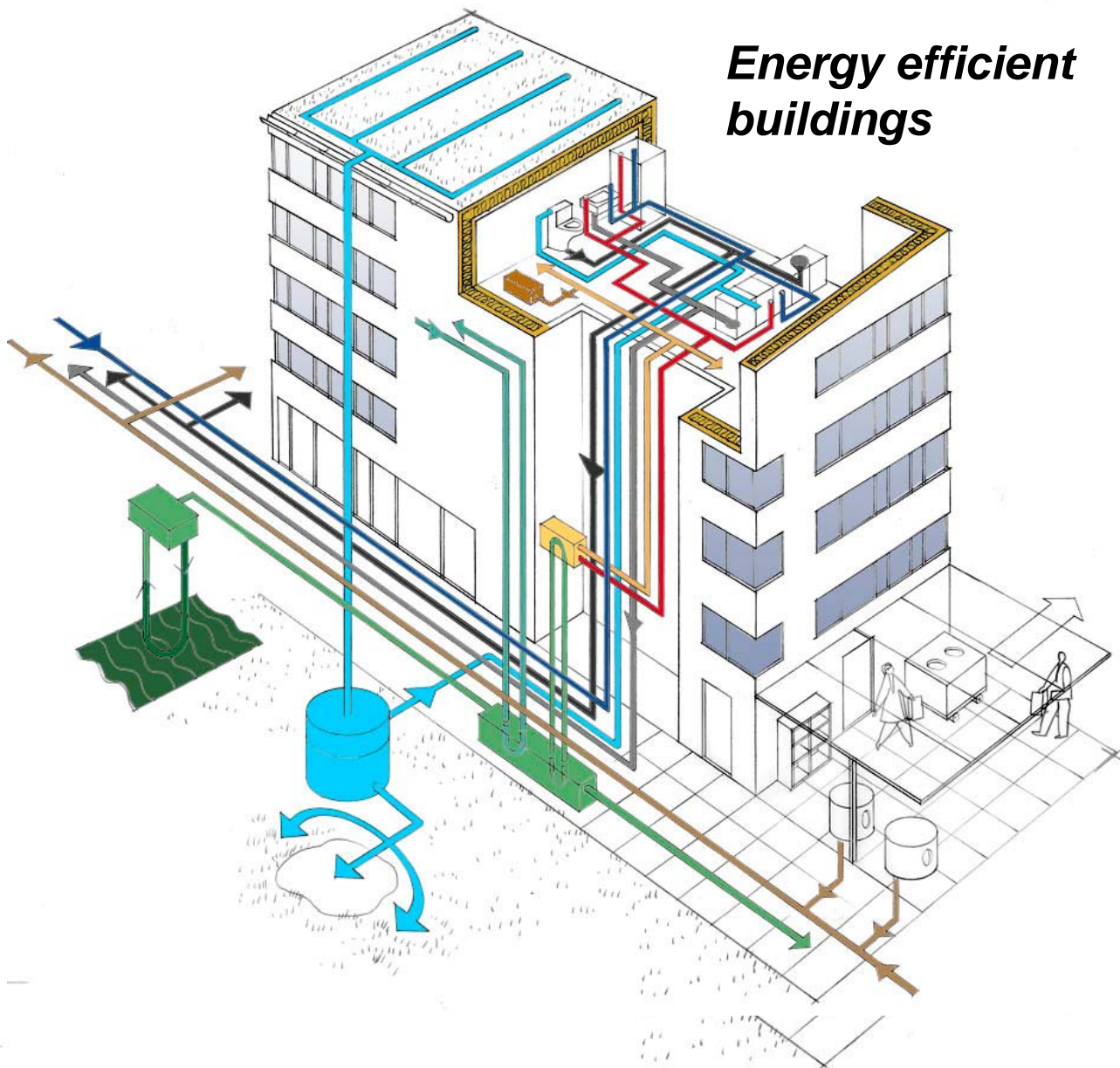
WASTE

- Vacuum transportation

ALL SYSTEMS

South Docklands, Cork – Eco-Cycle Model on building level

Energy efficient buildings



- BUILDING**
- High insulation of walls, windows and roofs, reduced cold bridges, airtight building envelope, controlled ventilation and heat exchange

- ENERGY**
- Geothermal cooling and Low temperature heating
- Comfort cooling (non-residential)
- Heat pump: Hot tap water
- Pre-heated ventilation air
- Heat pump utilizing exhaust air for tap warm water and/or supply air (optional)

- WATER SUPPLY**
- from city net

- BLACK WATER**
- from wc and slurry from waste-disposer

- GREY WATER**
- from bath and kitchen

- STORM WATER**
- Reuse for wc and dishwashers

- WASTE**
- Vaccuum transportation

- ALL SYSTEMS**

Total external energy demand 30/50 kWh/sqm, year exclusive of individual electricity use

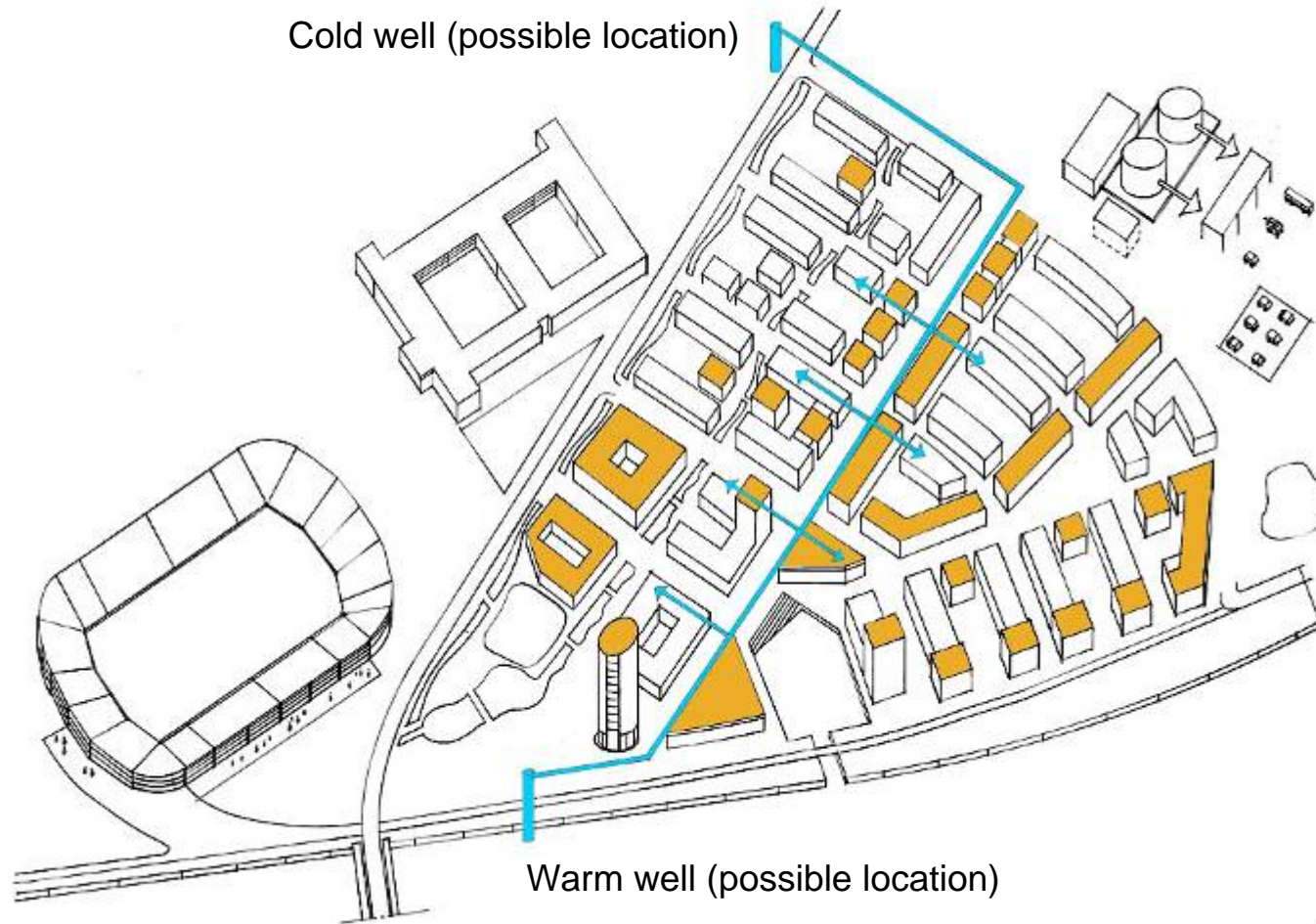
ENERGY SUPPLY

Distribution system for Geothermal cooling and low temperature heating.

Local electricity and heat production; PV-cells solar panel as an option

Cold well (possible location)

Warm well (possible location)



Cold well (possible location)

Warm well (possible location)

ENERGY SUPPLY

Distribution system for Geothermal cooling and low temperature heating.

Local electricity and heat production; PV-cells solar panel as an option

WATER and WASTEWATER

Green roofs – storm water attenuation

Pipe duct: Pipes for WC black water, food slurry and grey water

Reuse of water for flushing of WCs

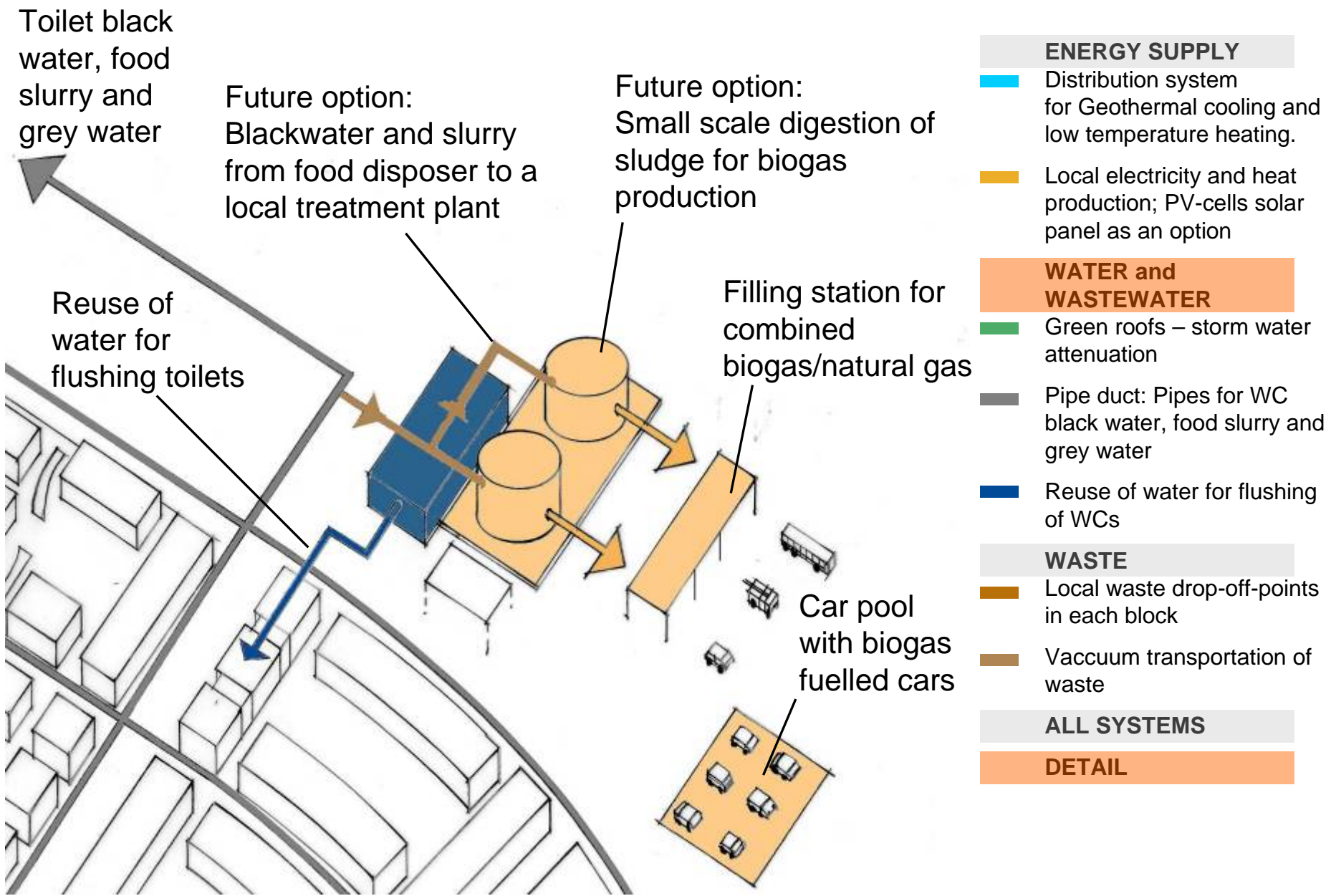
WASTE

Local waste drop-off-points in each block

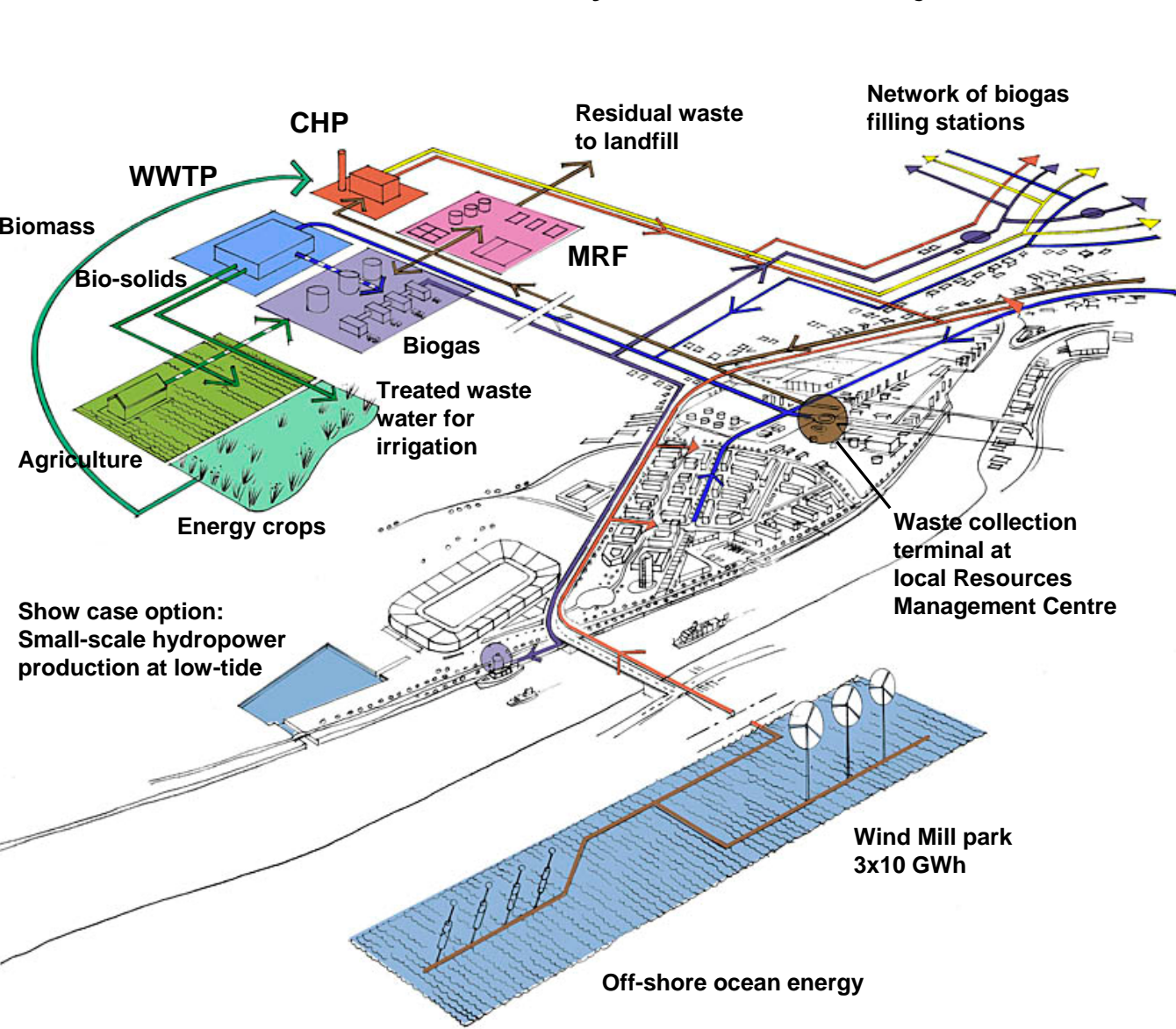
Vacuum transportation of waste

ALL SYSTEMS

DETAIL



South Docklands, Cork – Eco-Cycle Model on city level



- Waste collection terminal at local Resources Management Centre to MRF (Materials Recycling Facility) and to CHP (Combined Heat and Power). Residual waste to landfill
 - Pipe ducts for toilet black water, food slurry and grey water to WWTP (Waste Water Treatment Plant)
 - ▤ Waste water sludge as source for biogas production
 - Bio-solids to agriculture fertilization
 - ▤ Manure from agriculture to biogas plant
 - Biogas for heating and fuel
 - Treated waste water for irrigation of energy crops
 - Biomass to CHP for energy production
 - District heating to existing Cork city building stock
 - Electricity from CHP, from wind mill parks and from ocean energy
- ALL SYSTEMS**

Expected benefits of the Sustainable City Concept



Avoid suboptimization – economic benefits



75% reduction of external energy demand excl. individual electricity use and 100% renewable energy supply



Facilitate cooperation – sharing of knowledge



”Marry”our Swedish experiences with your experiences



Possible Applications of the Sustainable City Concept



Sustainability reviews



Eco-cycle models and energy strategies



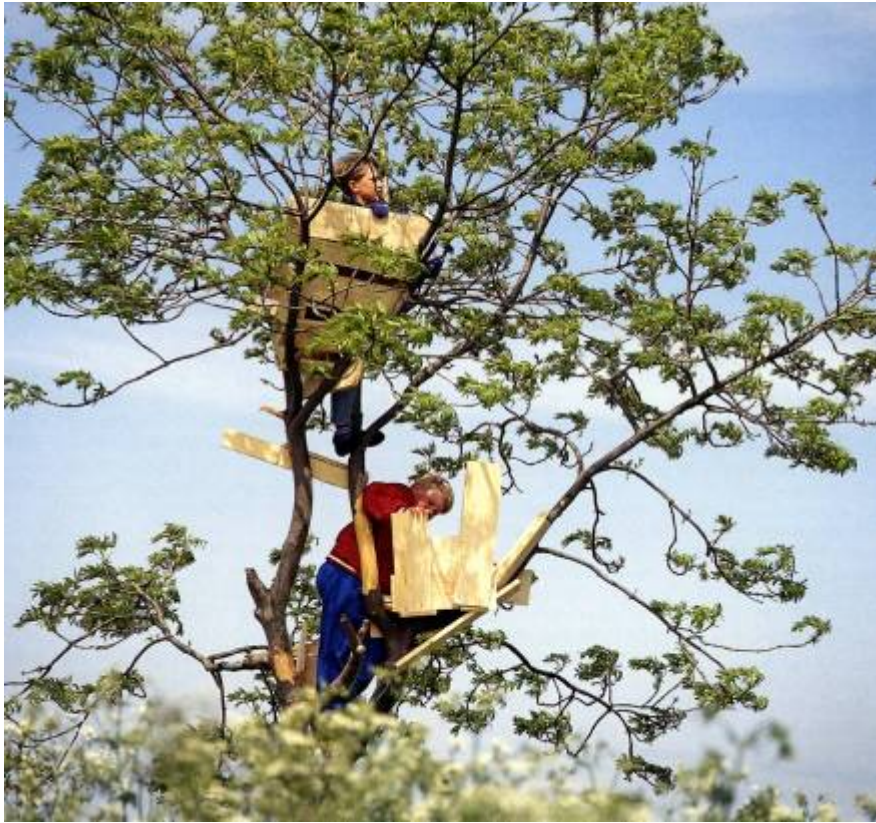
Integrated systems solutions on all urban scales



A Network of Model Sustainable Cities



Thank You for Your Attention!



*Vision without action is a daydream but
action without vision is a nightmare.....*

*The Sustainable City Concept forms a bridge between vision and action
in the challenging task of transforming our cities !*

Contact details:

Henrik Berg von Linde henrik.berg.von.linde@sweco.se
Webpage: www.swedentech.se

Swedish Trade Council swedentech@swedishtrade.se
Webpage: www.swedentech.se

Power-point presentations and other Sustainable City presentations are available in pdf-format on webpage: www.sweco.se/suci

Sustainability Review for the Toronto Waterfront Revitalization Corporation is available as pdf-file on webpage www.towaterfront.com **look into section “Sustainability”**

Hammarby sjöstad: www.hammarbysjostad.se