



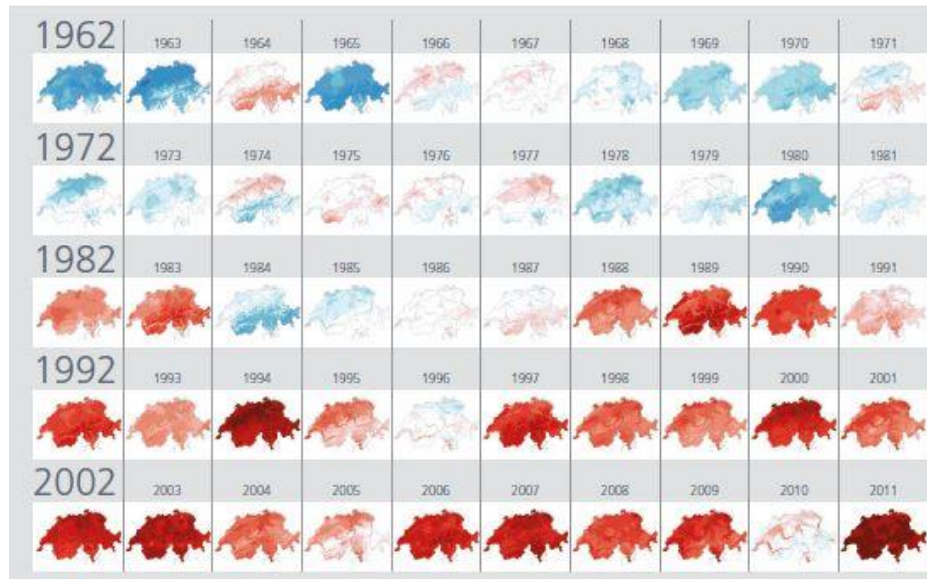
How is Swiss agriculture affected by climate change?



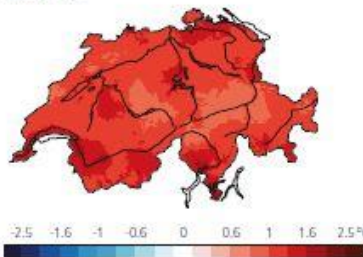
12 November 2013



Temperature



2012



Deviation of the mean annual temperature from the 30-year average (1961-1990) in degrees Celsius.

Positive deviations (warmer) are coloured red, negative deviations (cooler) blue.

- Temperature increase in Switzerland higher than on northern hemisphere or global mean
- Cumulation of warm years since 1990, with 2011 being the hottest of the last 50 years

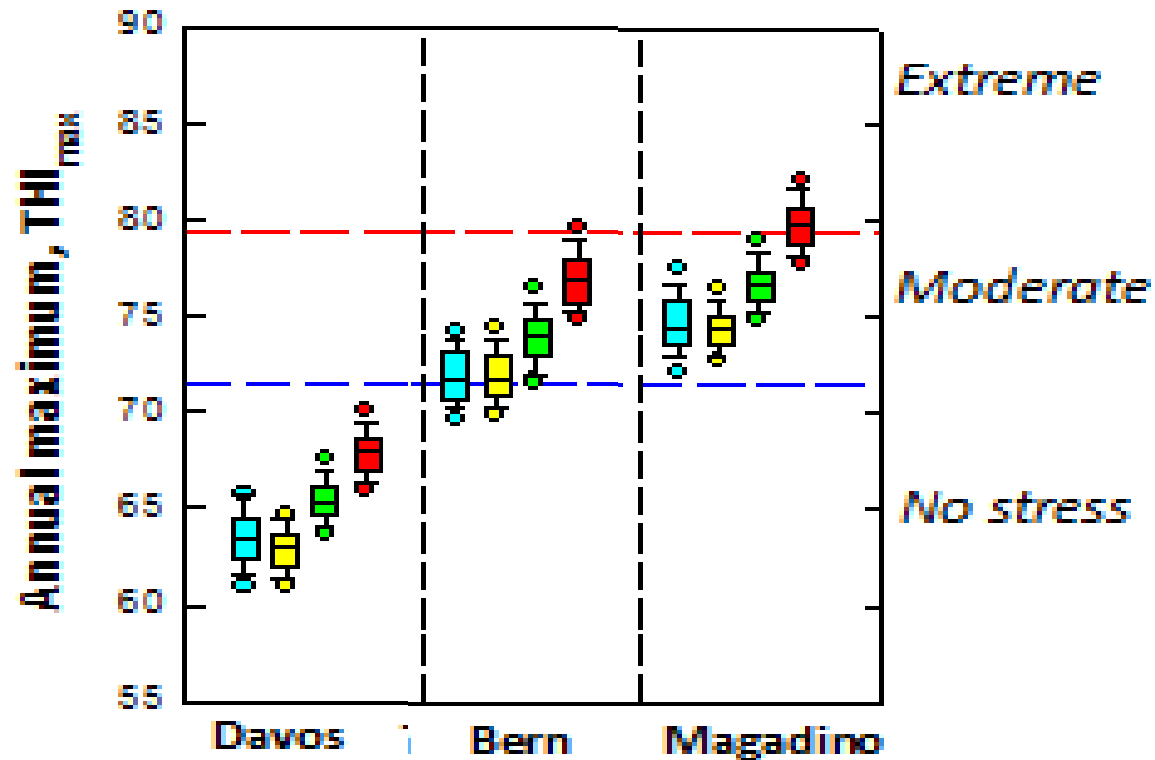
Source: meteoschweiz



Livestock: risk of heat stress



Increased temperature-humidity index (THI) means increases stress risk

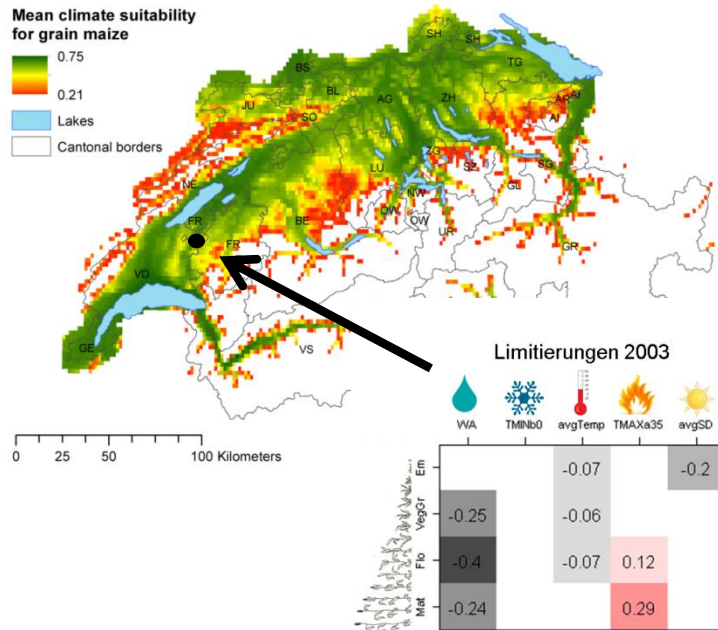


Source: Fuhrer J., Calanca P., AGFO 2012

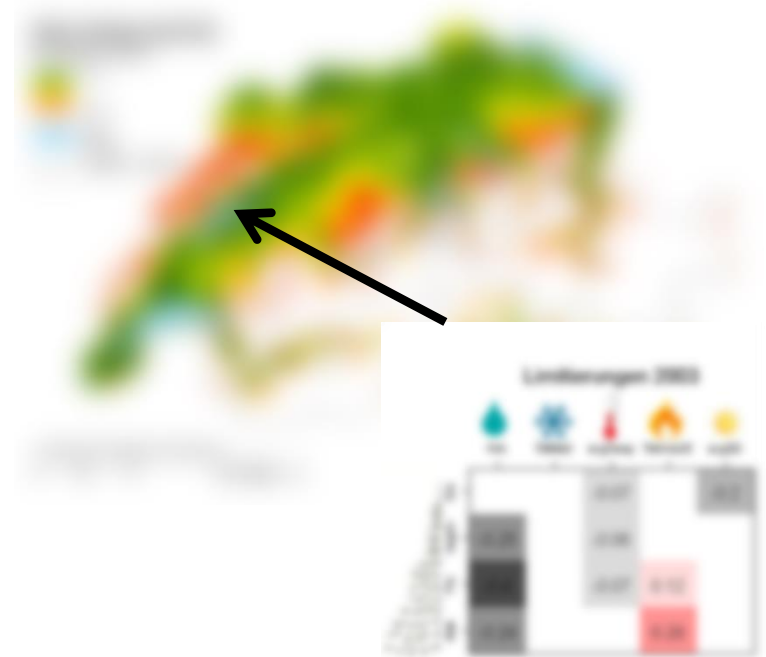


Climate suitability for different crops

Mean 1983-2010



Future?



Source: Agroscope ART



Climate related objectives

