



World Population 6,056,528,577 +



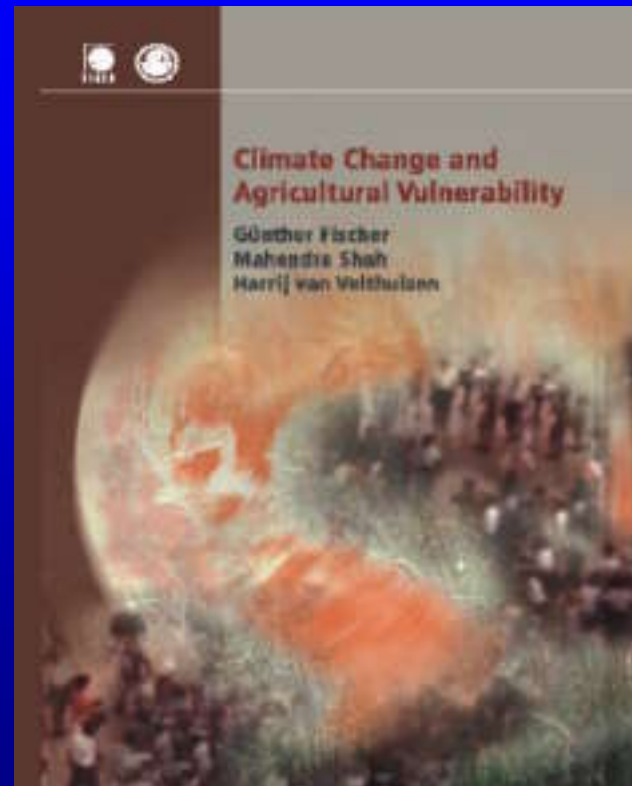
**Günther Fischer, Mahendra Shah, Harrij Van Velthuisen
IIASA, Land Use Change**

Impact of Climate Change on Agriculture

Towards an integrated global assessment of potential environmental, economic & social costs

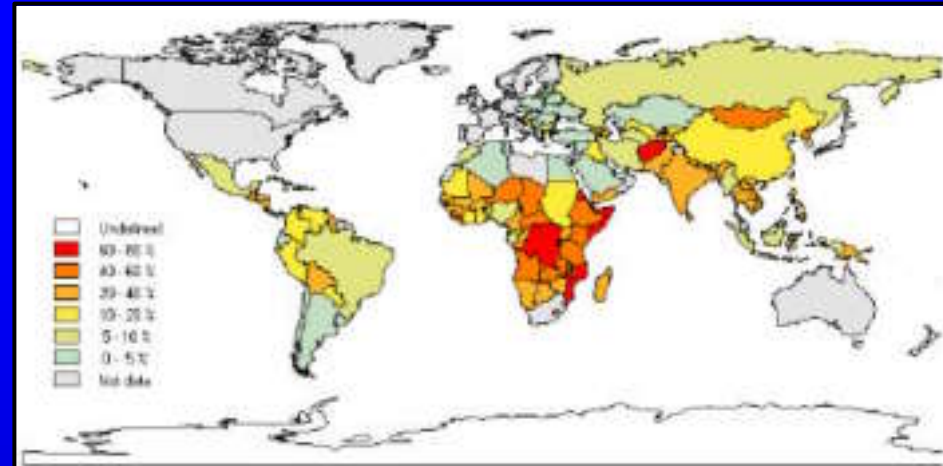
SBSTA, UNFCCC, Bonn, 18th June 2004





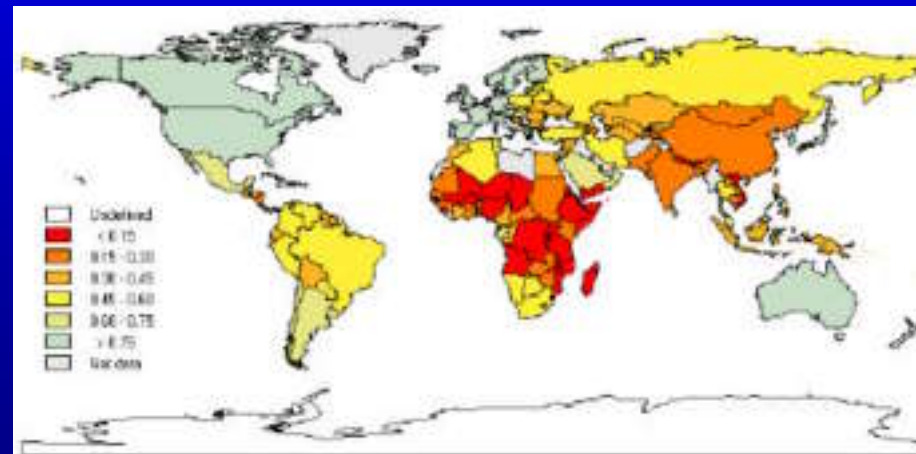
MDG Hunger

% Hungry	Ctrys	Millions
5 to 20%	28	223
20 to 35%	27	339
+ 35%	23	220



MDG Poverty

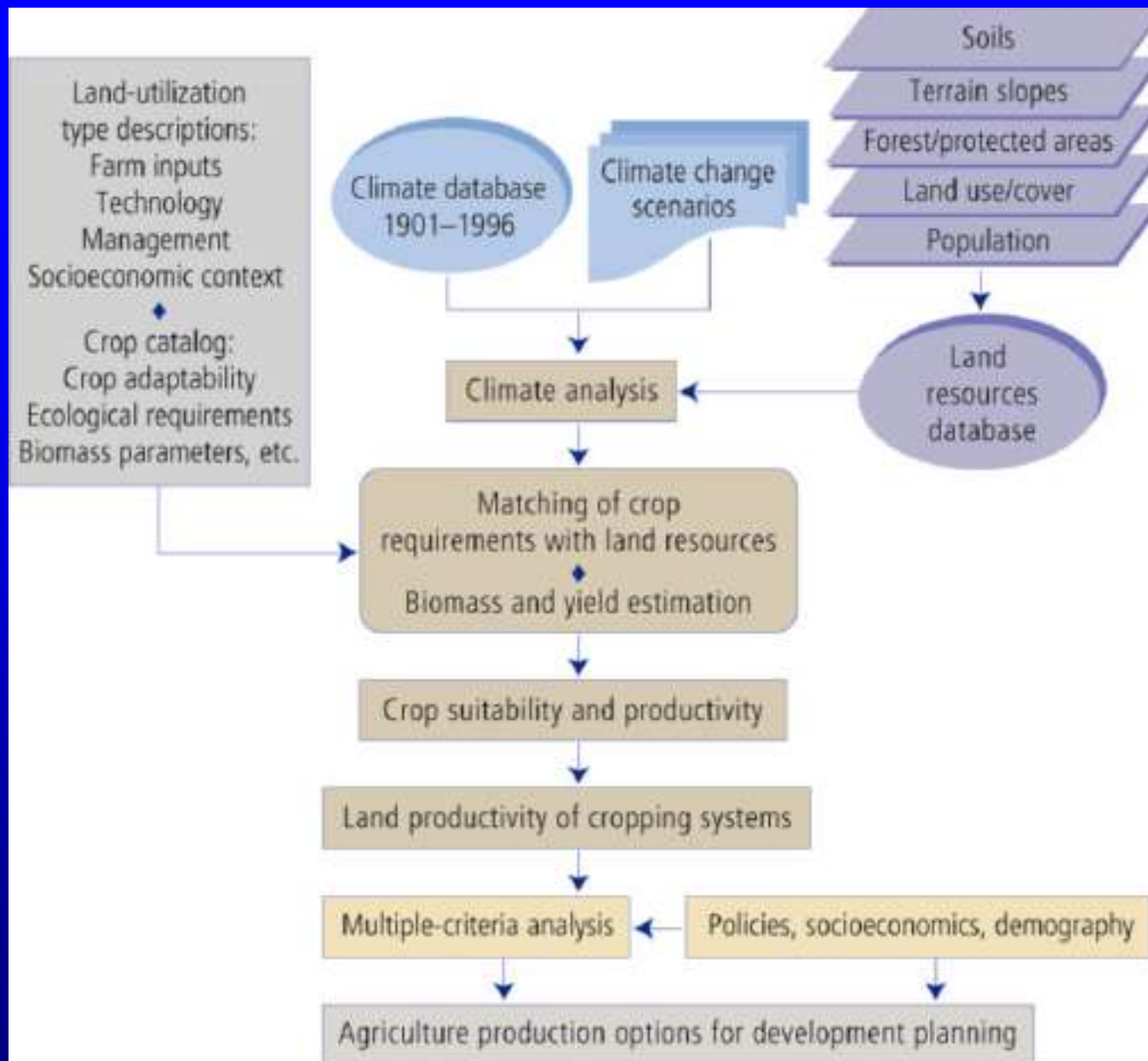
% Poor Pop.	<\$2 Ctrys
< 25%	22
25 to 50%	25
50 to 75%	1
> 75%	16

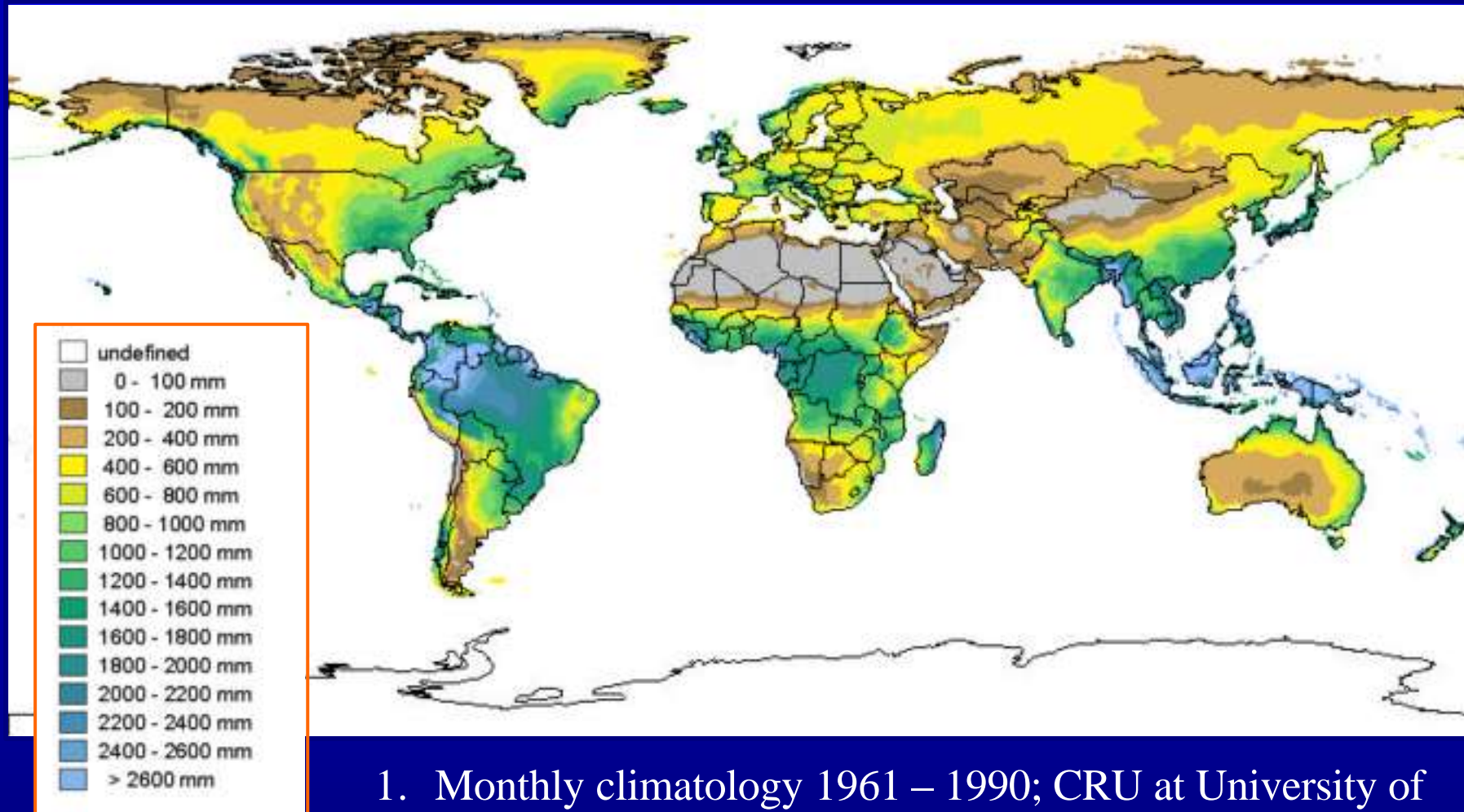


MDG : Environmental Sustainability

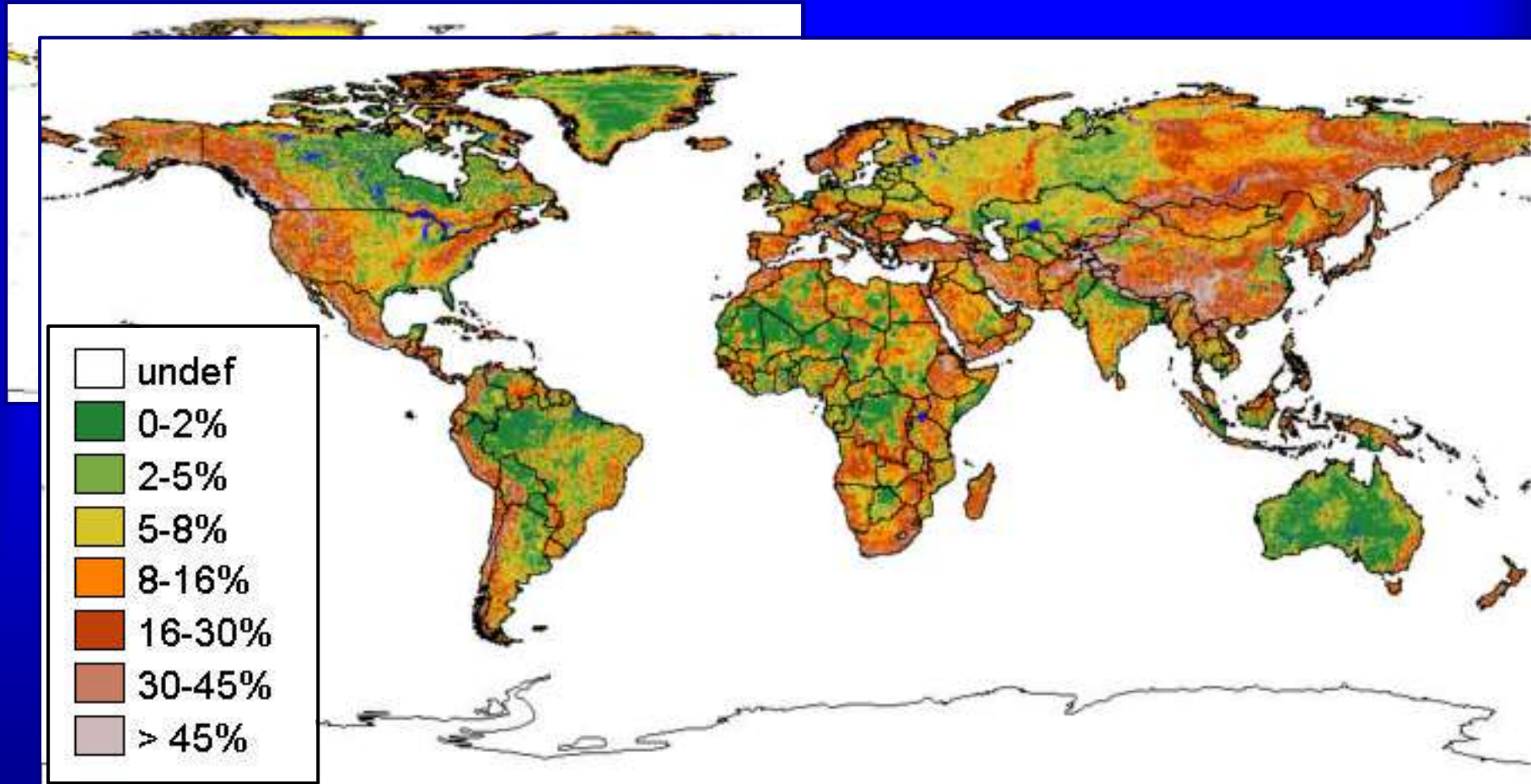
UNDP 2001



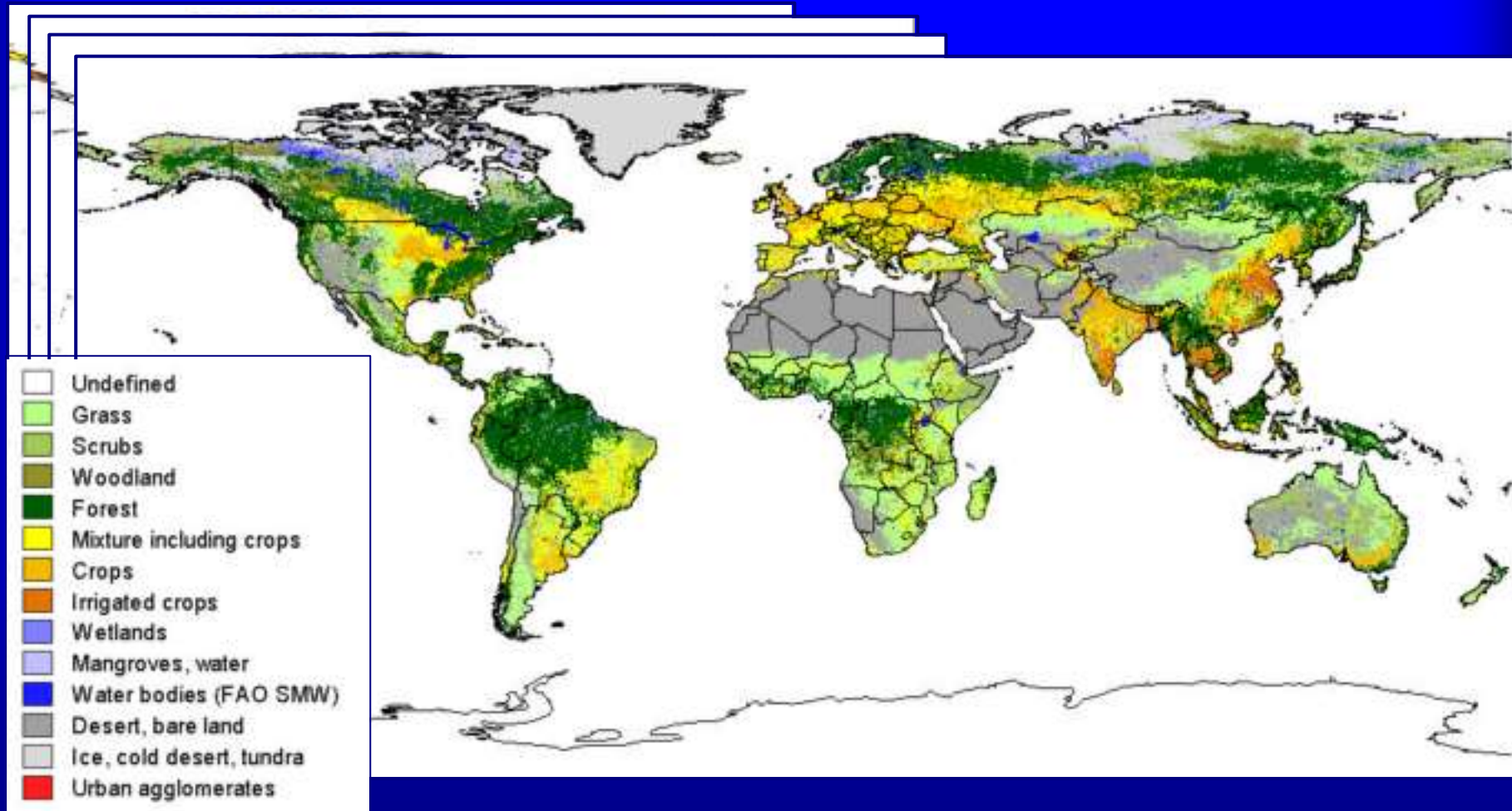




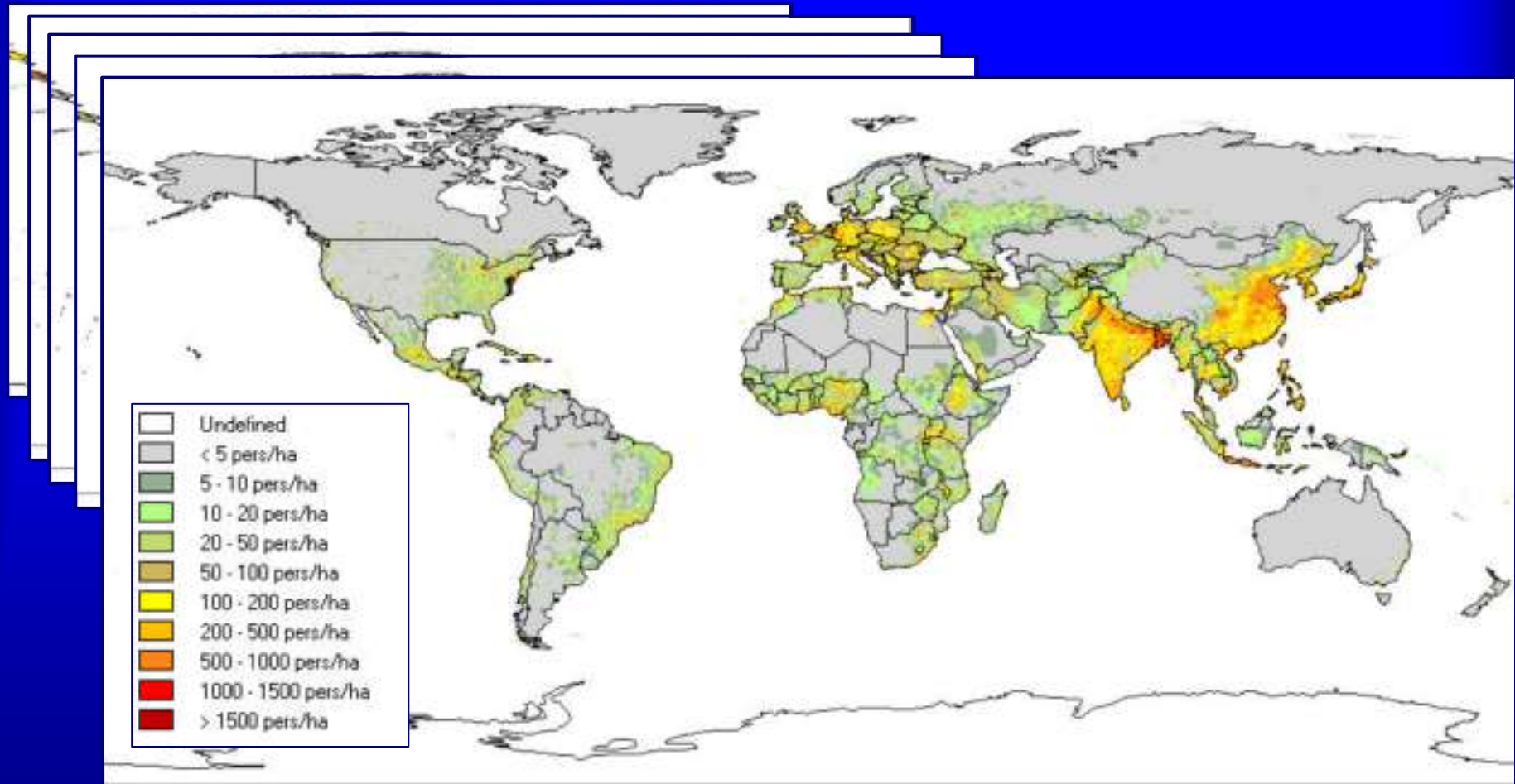
1. Monthly climatology 1961 – 1990; CRU at University of East Anglia; at 0.5 deg. latitude/longitude



2. Terrain slope database; USGS Eros Data Center; digital elevation at 30 arc-seconds latitude/longitude

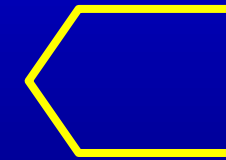
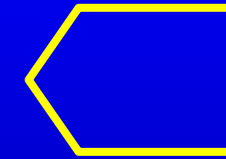
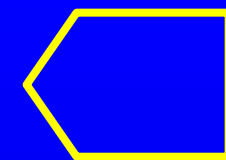
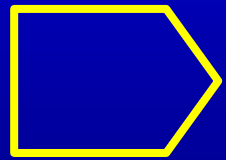
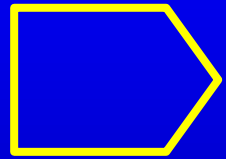
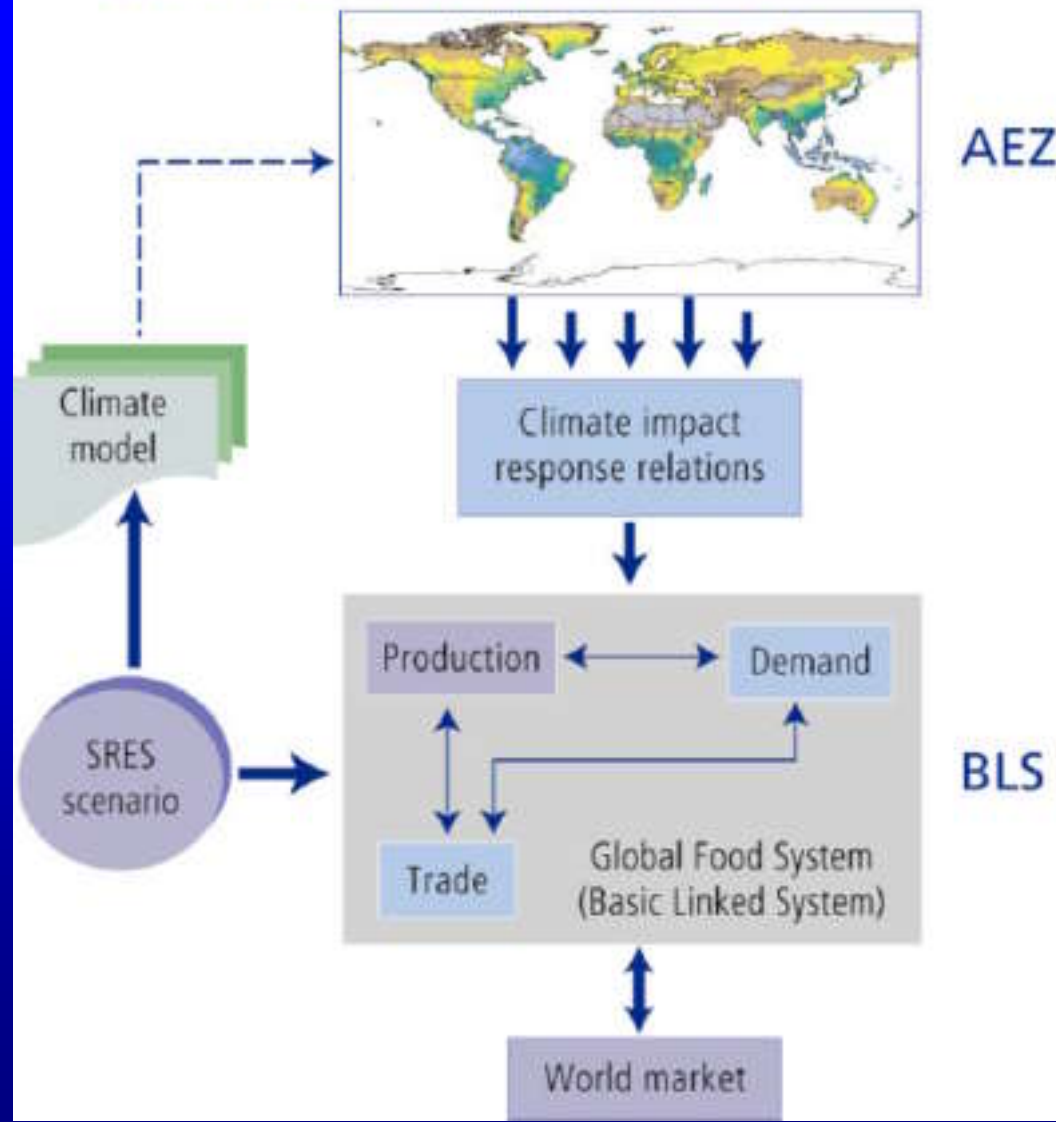


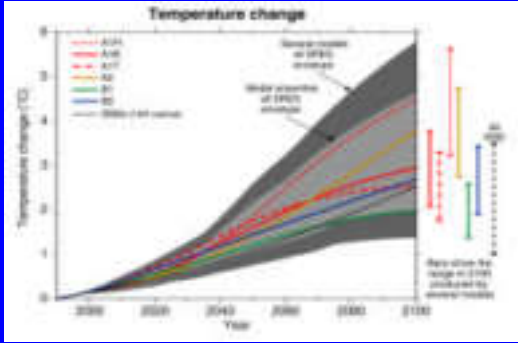
4. Global land cover characteristics database; USGS Eros Data Center; at 1 km resolution.

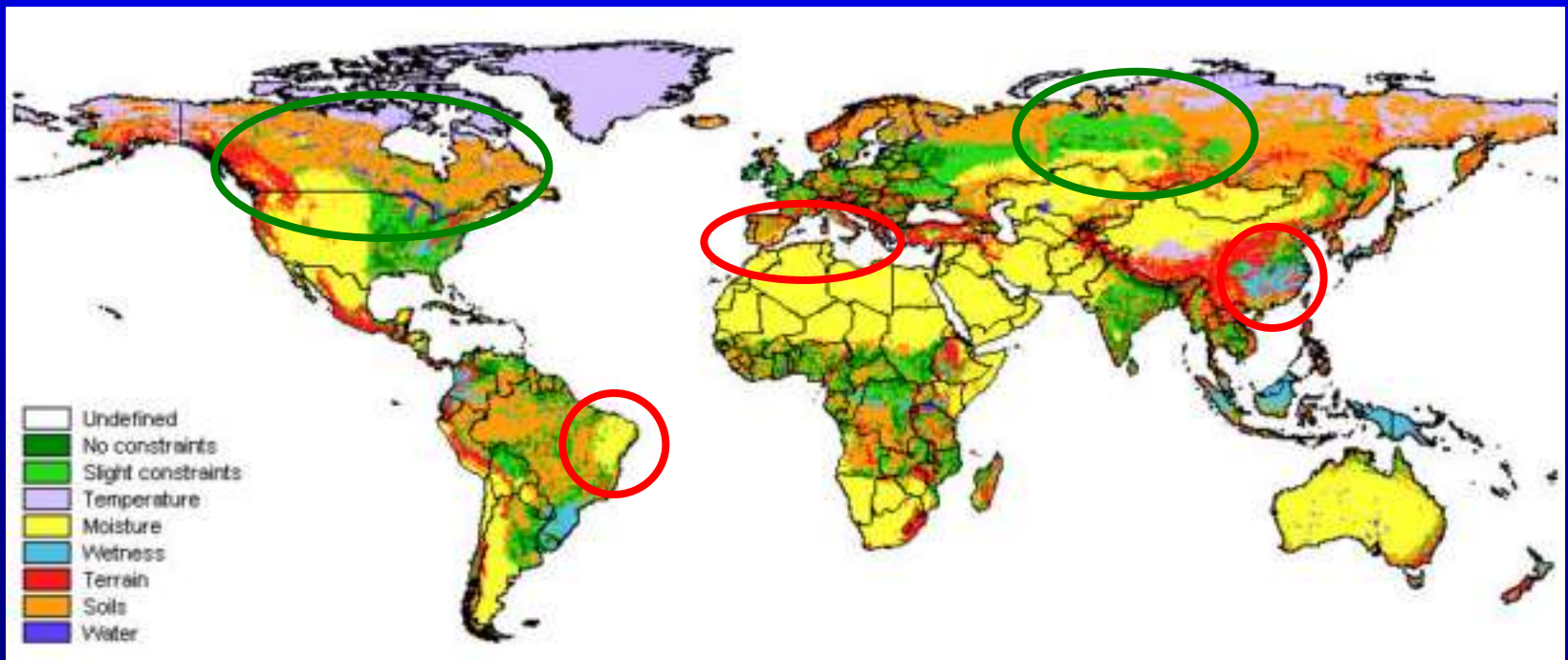
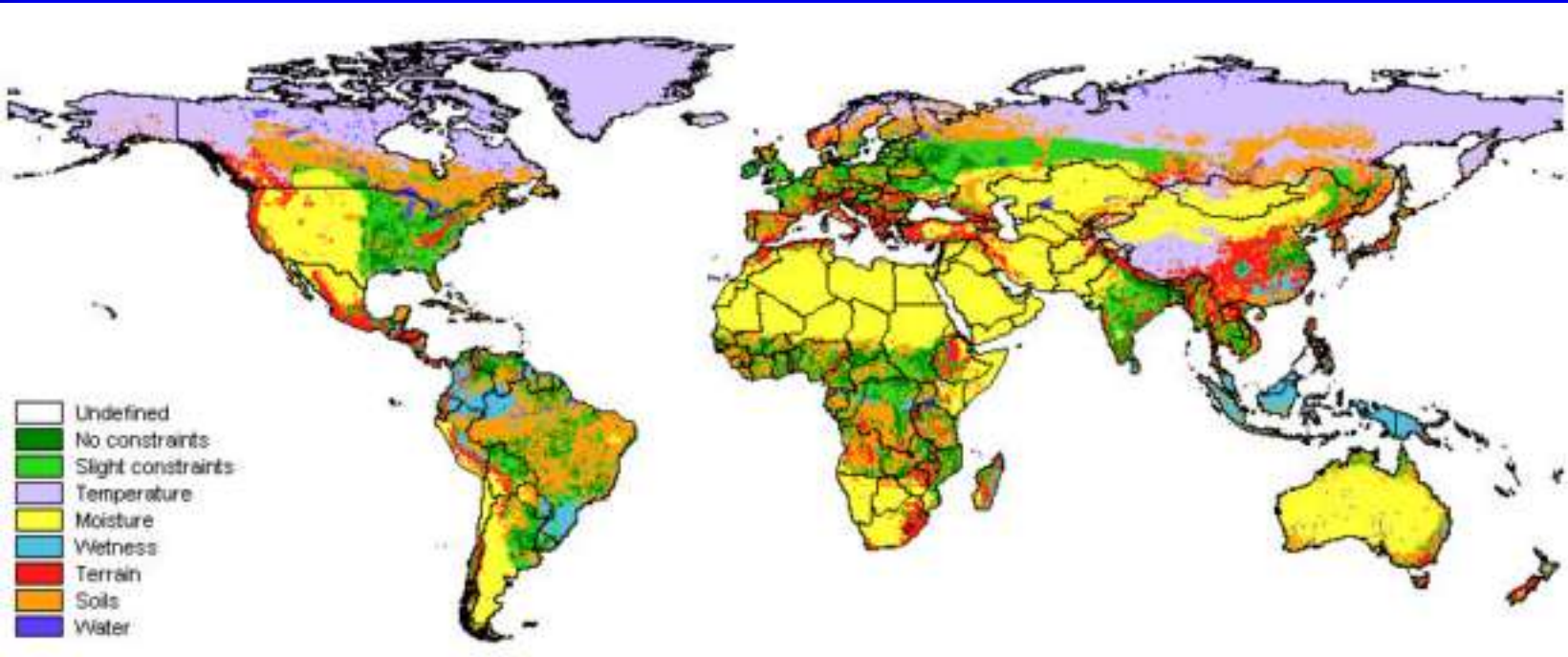


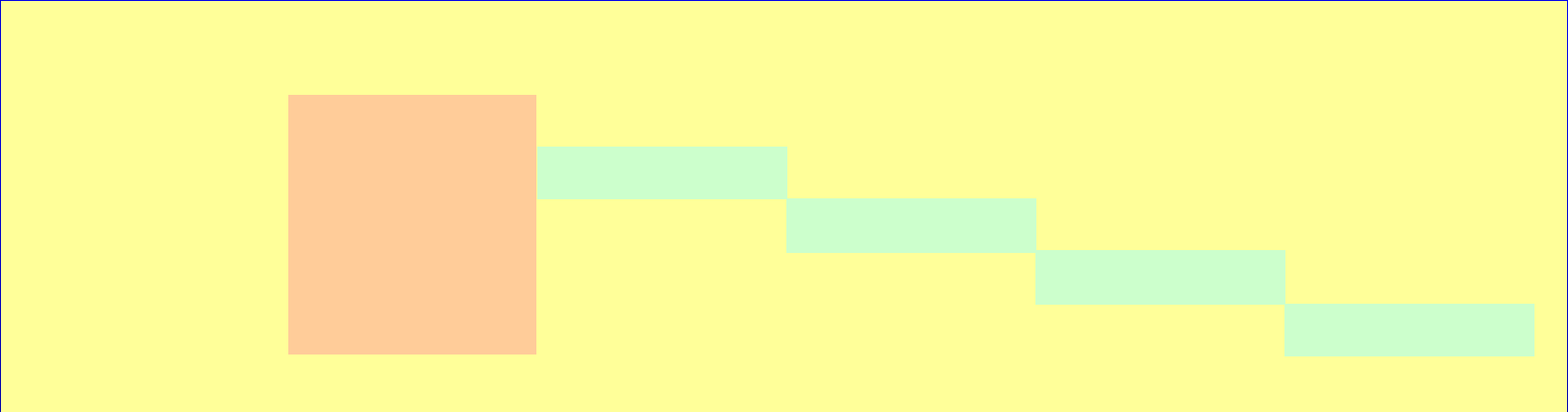
5. Global gridded population distribution data of 1995; CIESIN; at 2.5 arc-min. latitude/longitude resolution.

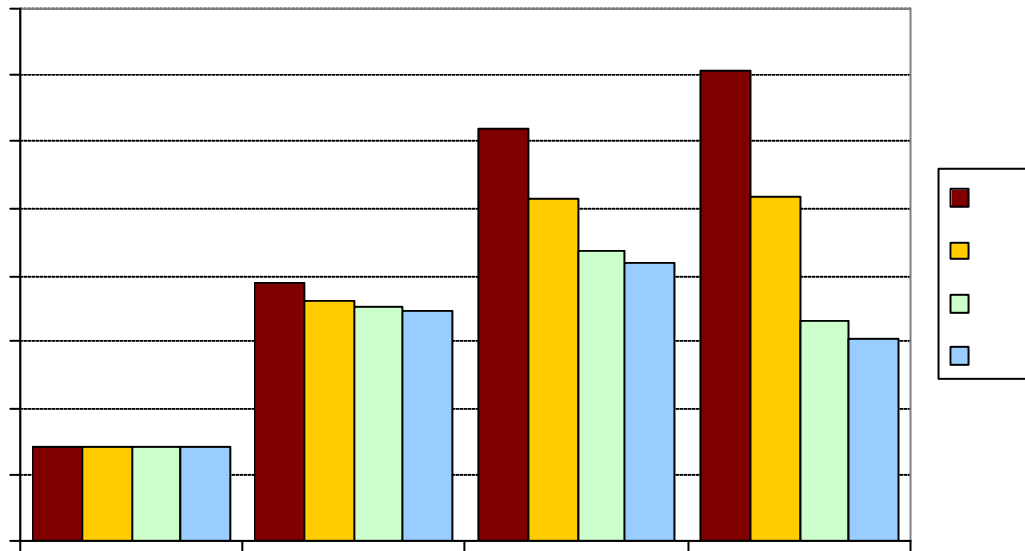
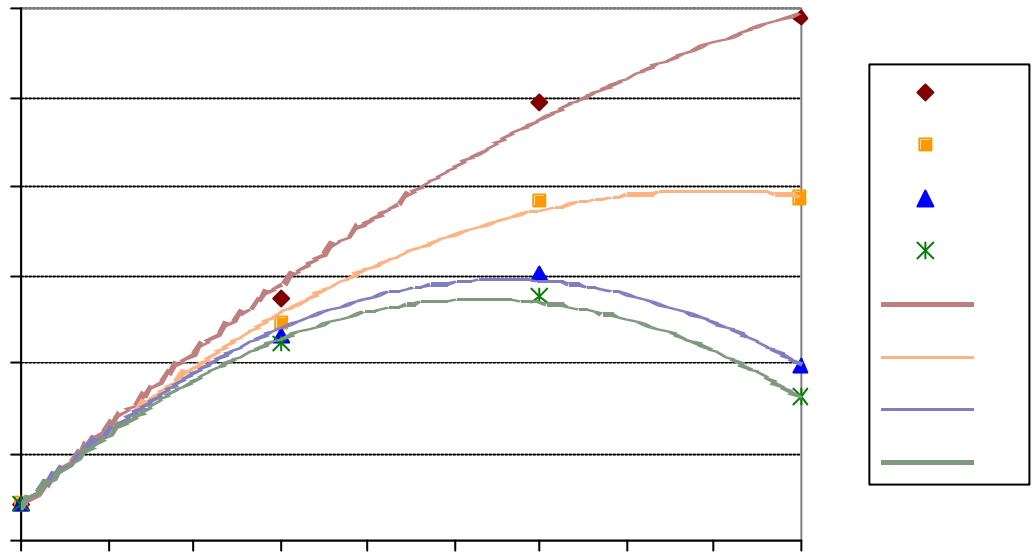
Ecological-Economic Analysis

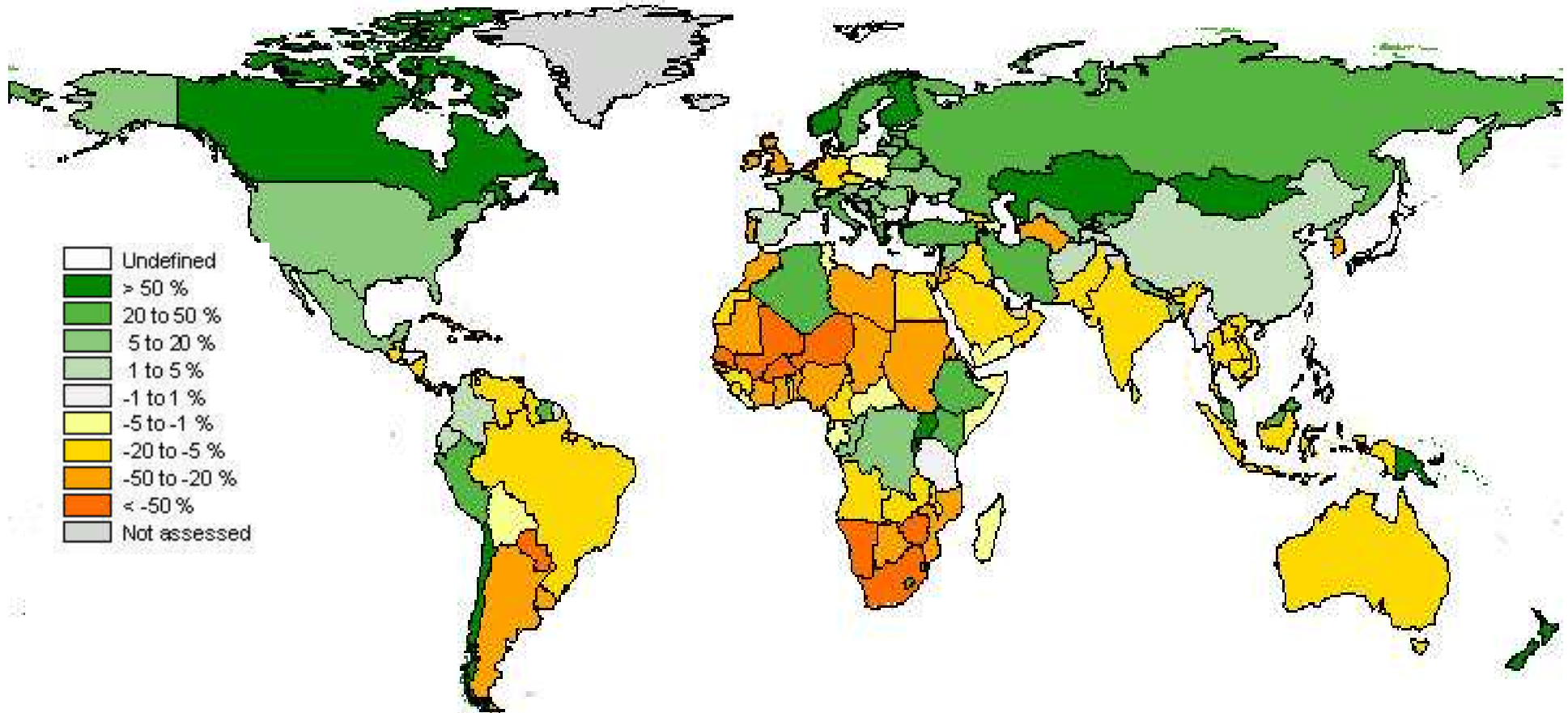
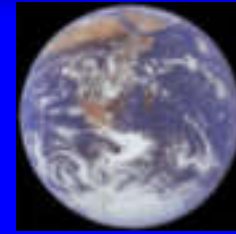


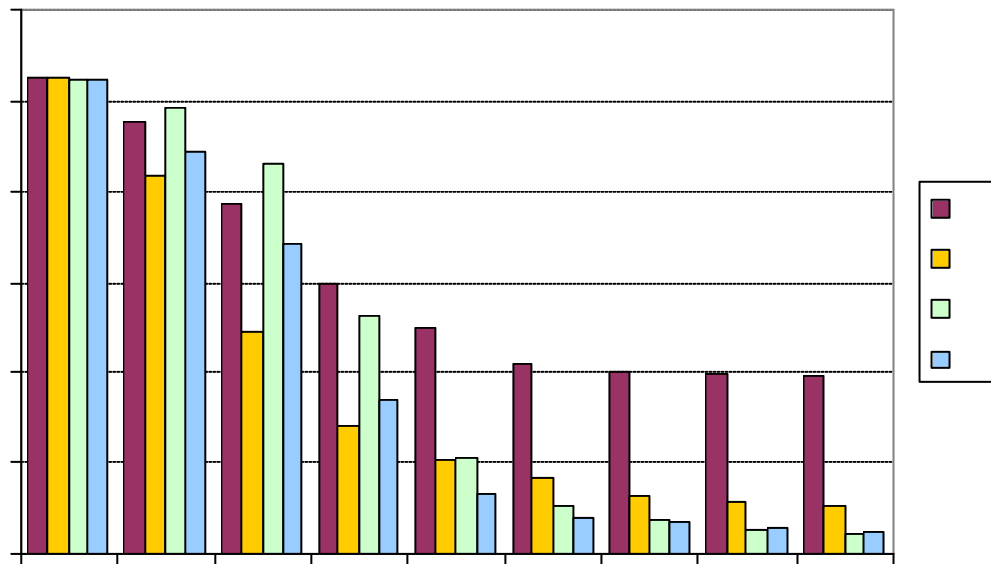
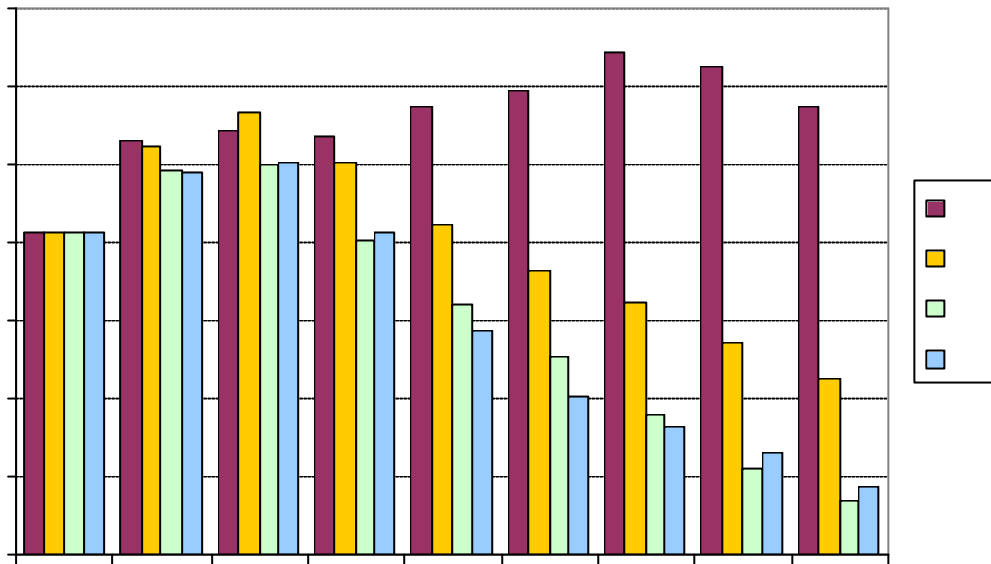


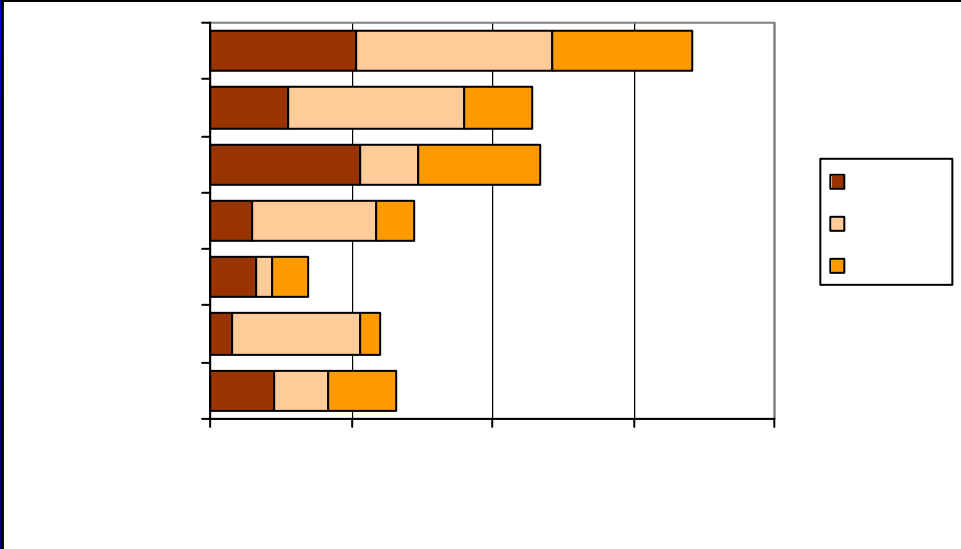
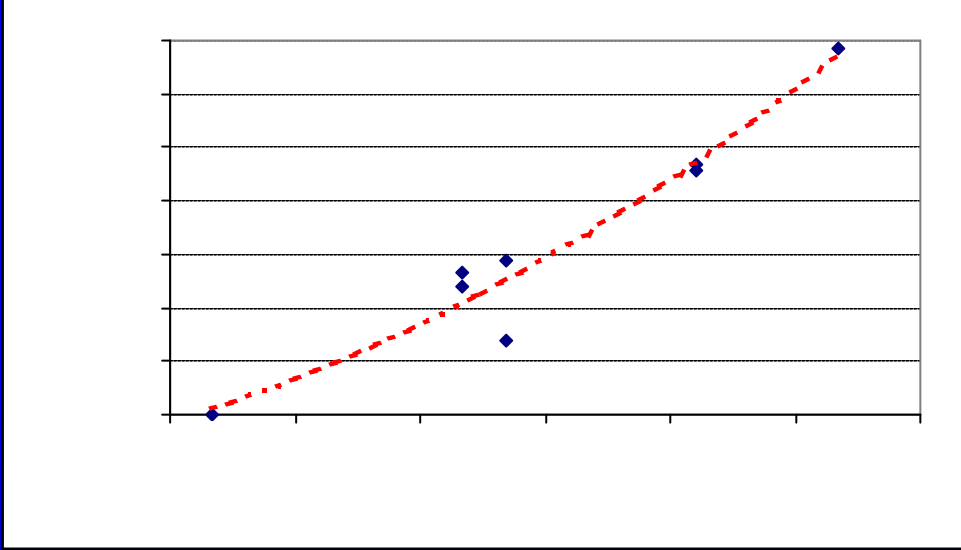












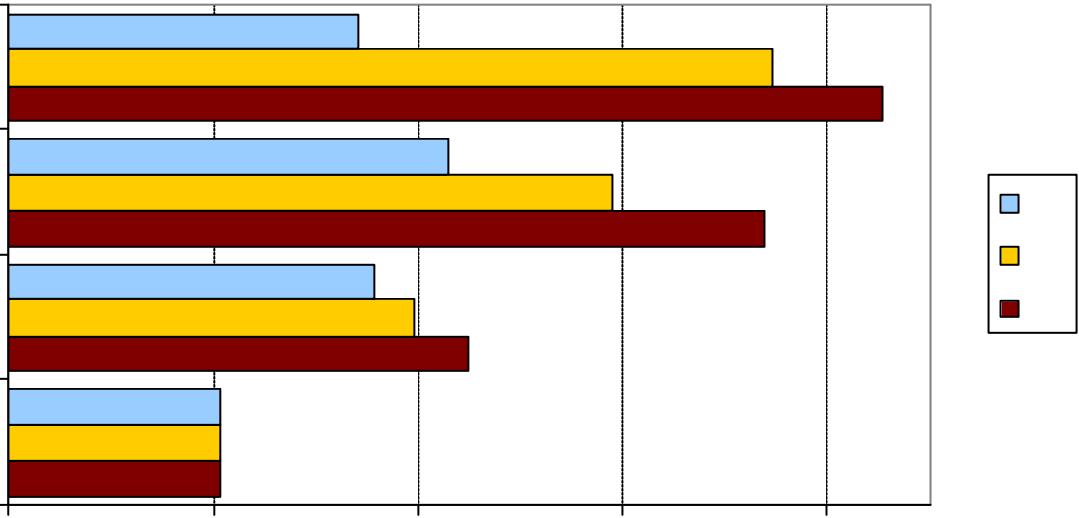
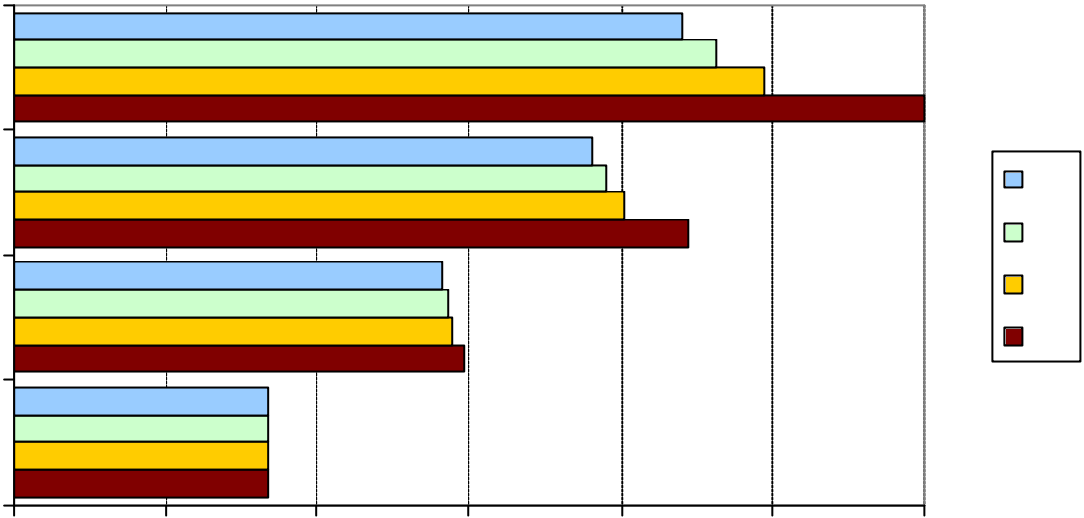
	% AgGDP	% Cereal Prdn
World	-1.5	-1.4
Developed	-0.5	2.8
North America	7.5	1.3
Europe	-14.7	-3.4
Developing	-1.9	-3.9
Africa	-4.9	-0.6
Latin america	3.7	15.9
Asia	-4.3	-8.6

World Market prices(% change from Ref Scenario)

Cereals 19.5%

All crops 10.5%









Note: percent change relative to respective reference projection without climate change.

