

In search of shelter



Mapping the effects of climate change on human migration and displacement



A clear signal

- Climate change is already contributing to displacement and migration.
- While economic and political factors are the dominant drivers of displacement and migration today, climate change is already having a detectable effect.



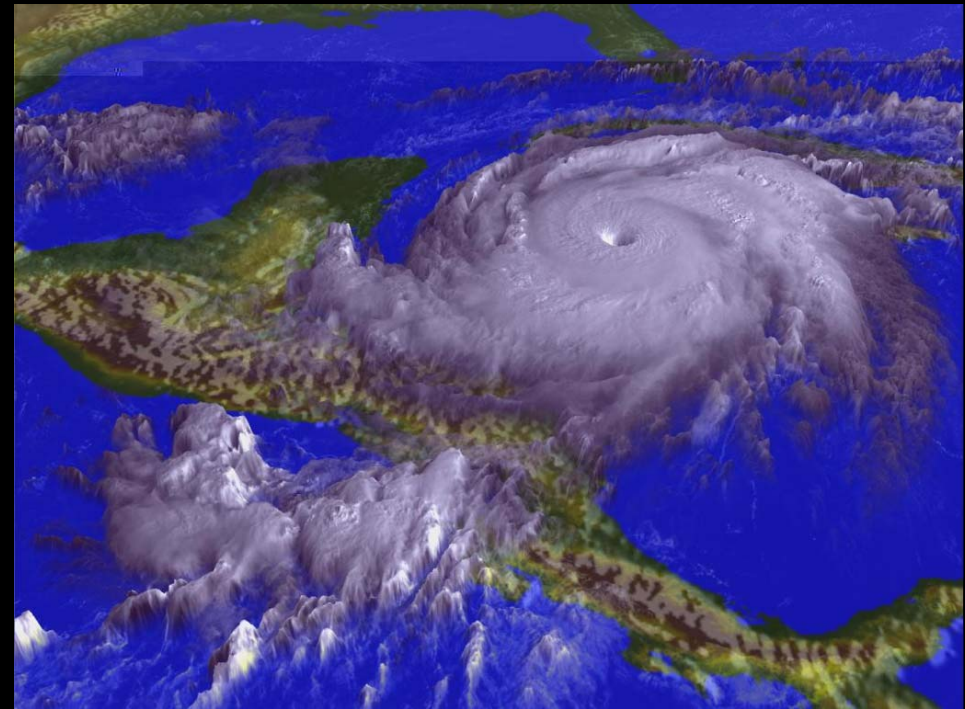
Loss of livelihoods and long-term migration

- The breakdown of ecosystem-dependent livelihoods is likely to remain the premier driver of long-term migration during the next two to three decades.
- Climate change will exacerbate this situation unless vulnerable populations, especially the poorest, are assisted in building climate-resilient livelihoods.

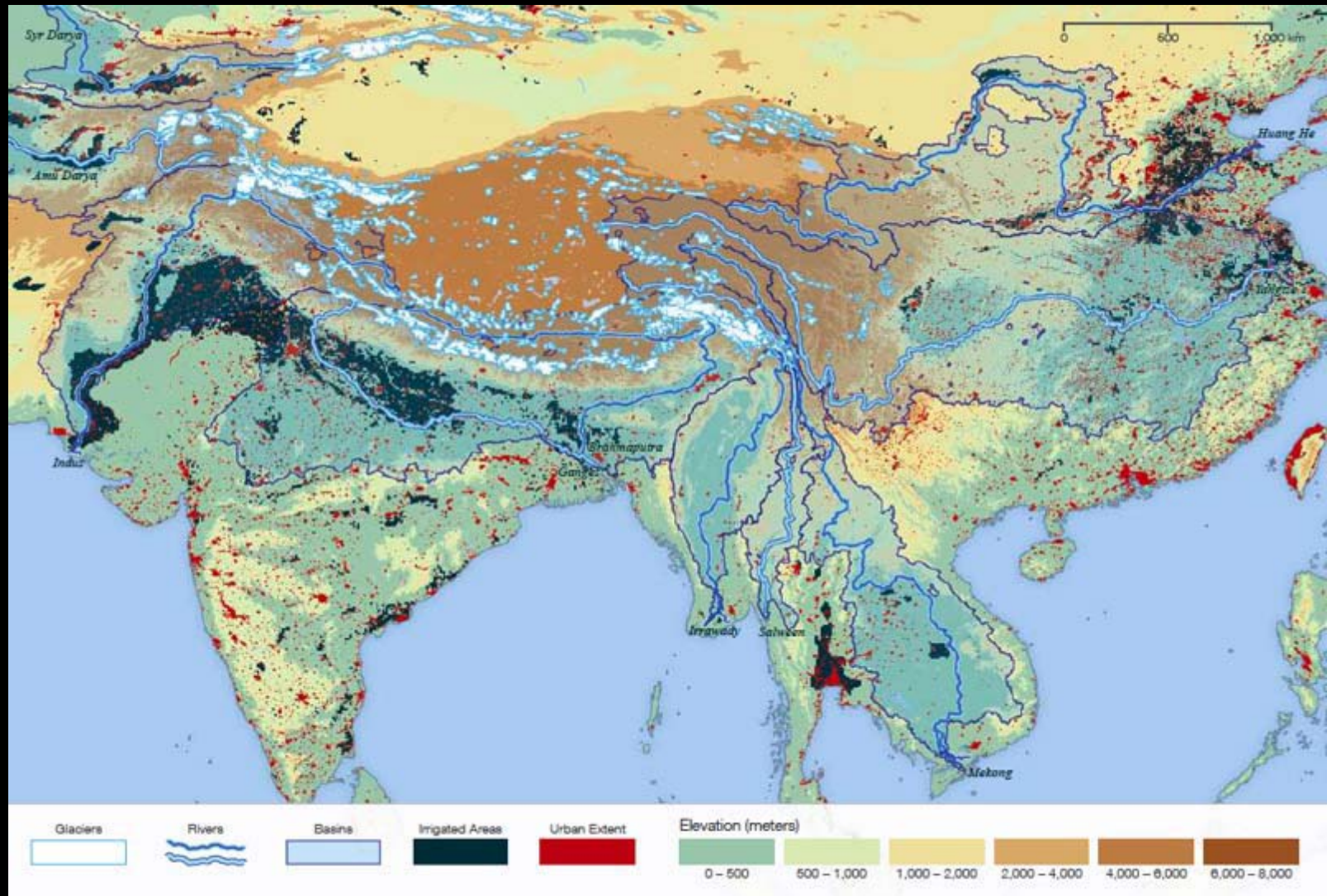


Disasters and short-term migration

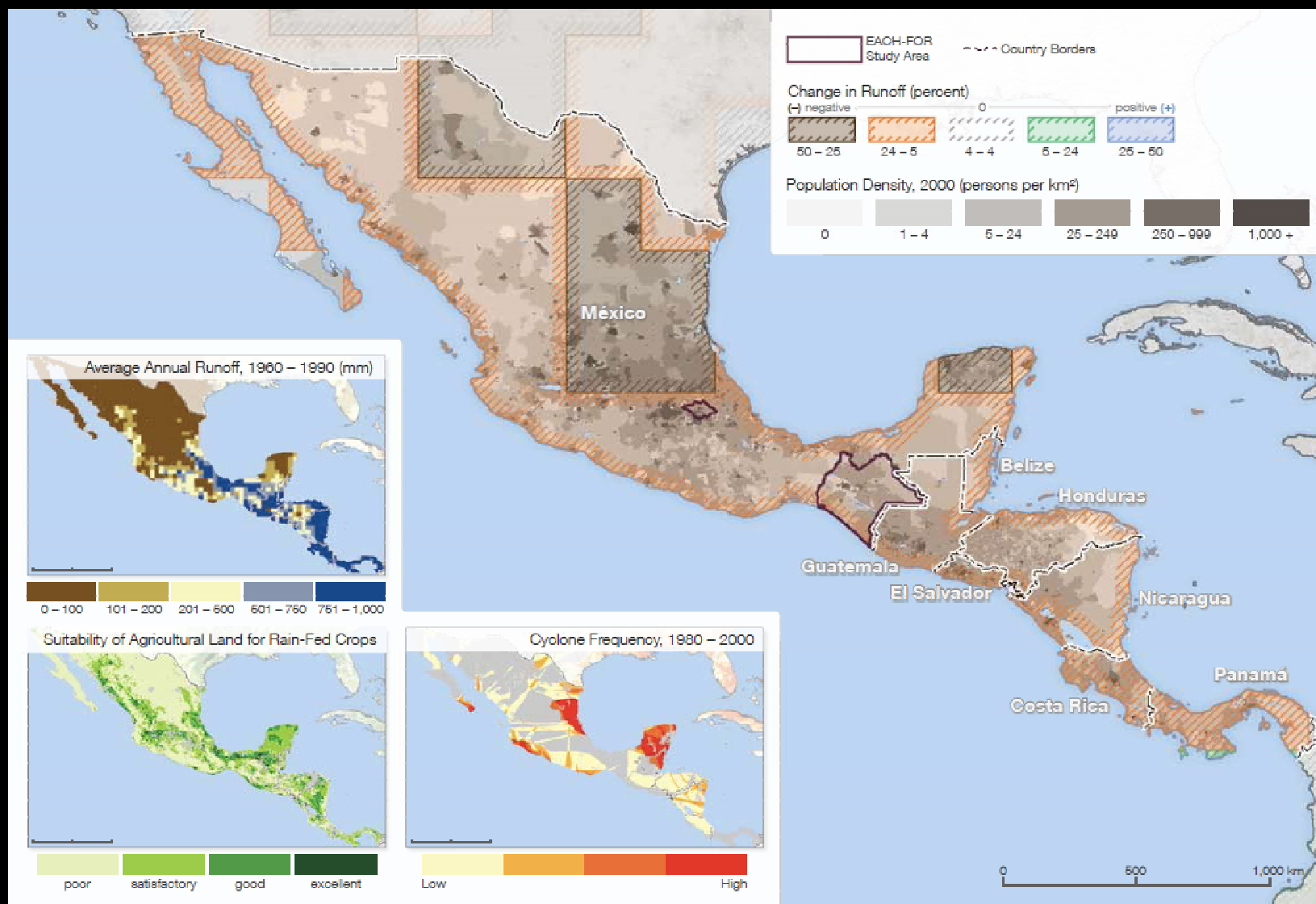
- Disasters continue to be a major driver of shorter-term displacement and migration.
- The number of temporarily displaced people is likely to rise unless countries invest now in disaster risk reduction.



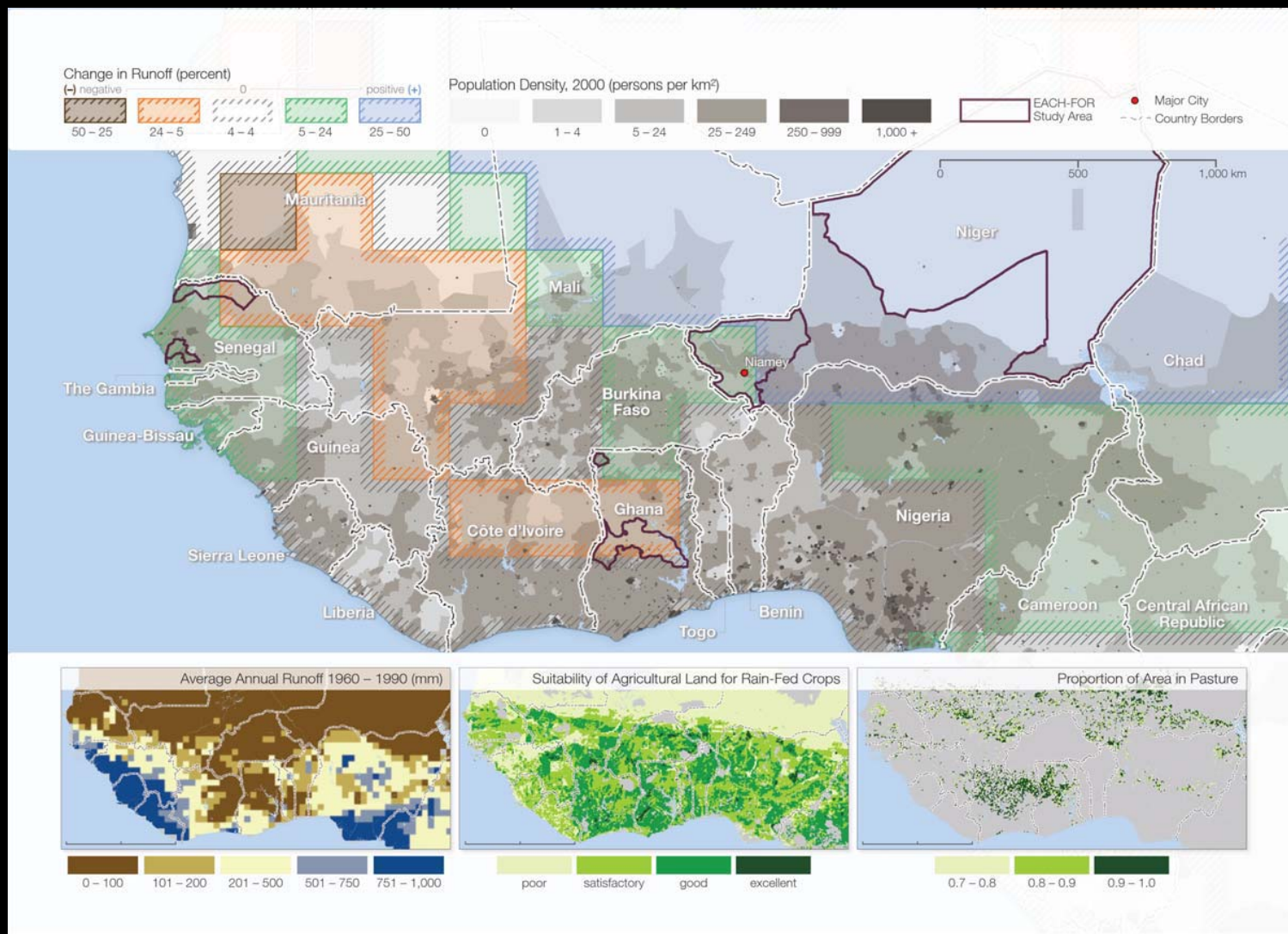
Glacier melt – One third of the world's population



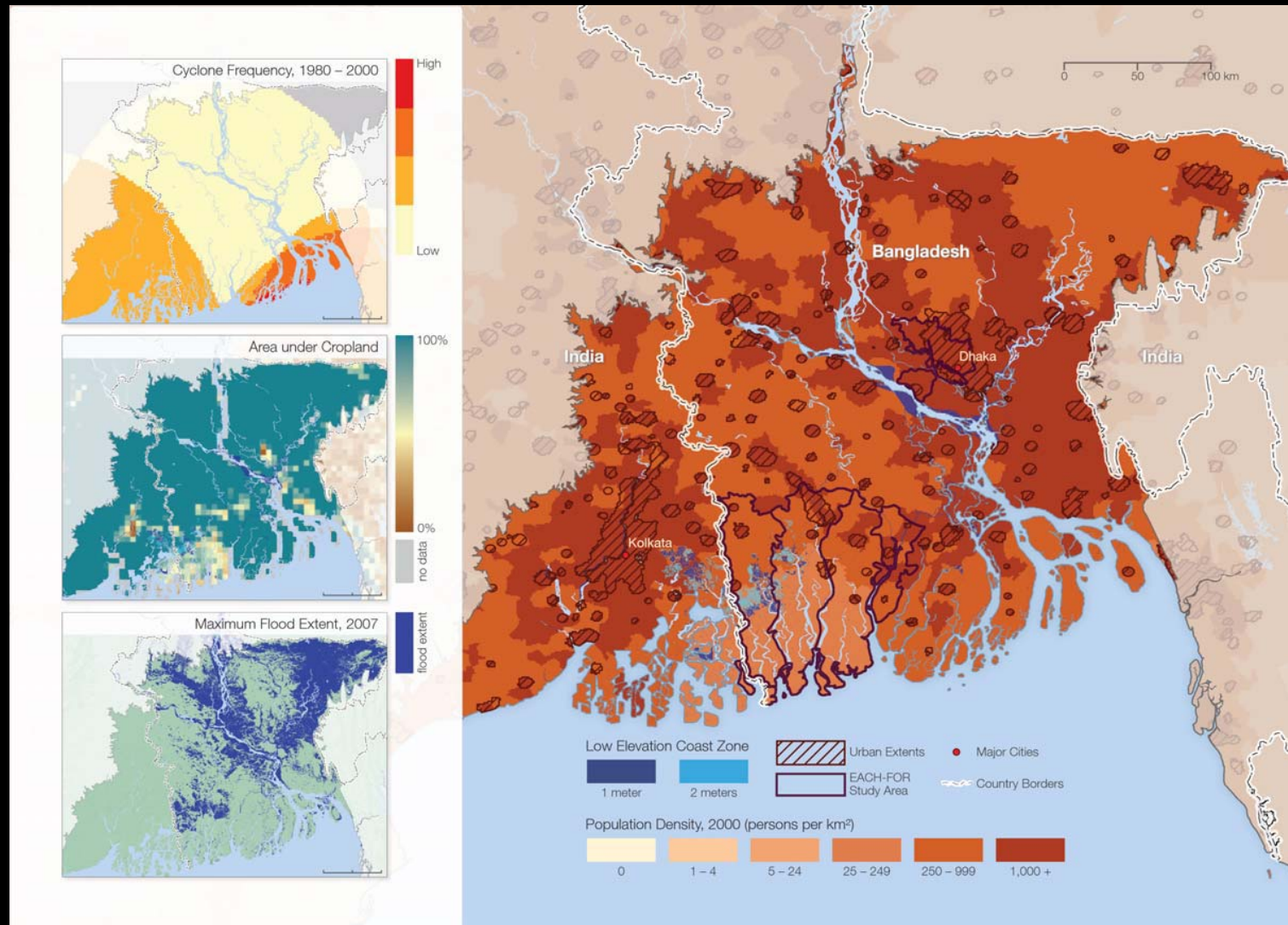
Drying up and moving out - Central America



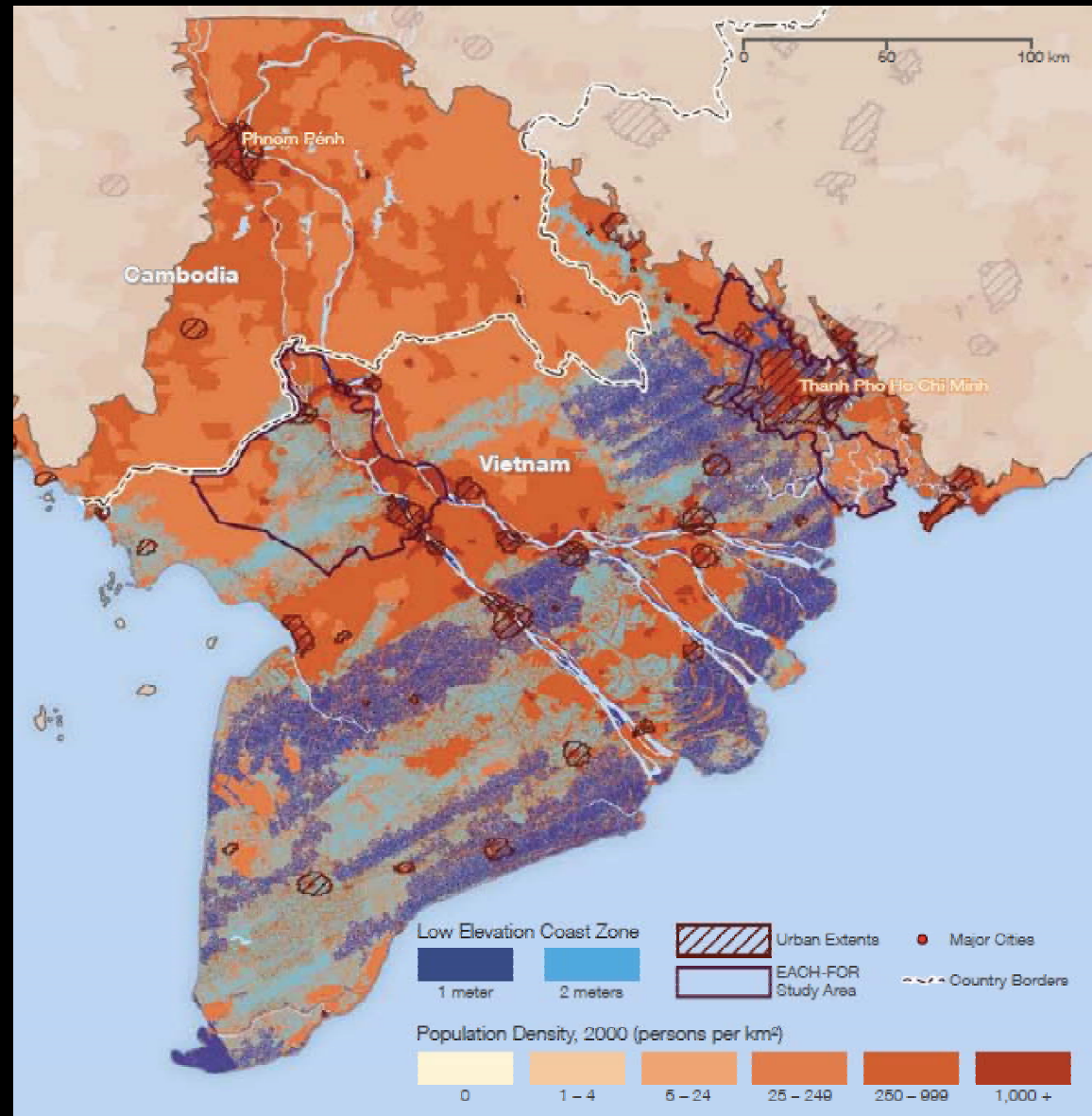
Creeping onward migration – The Sahel



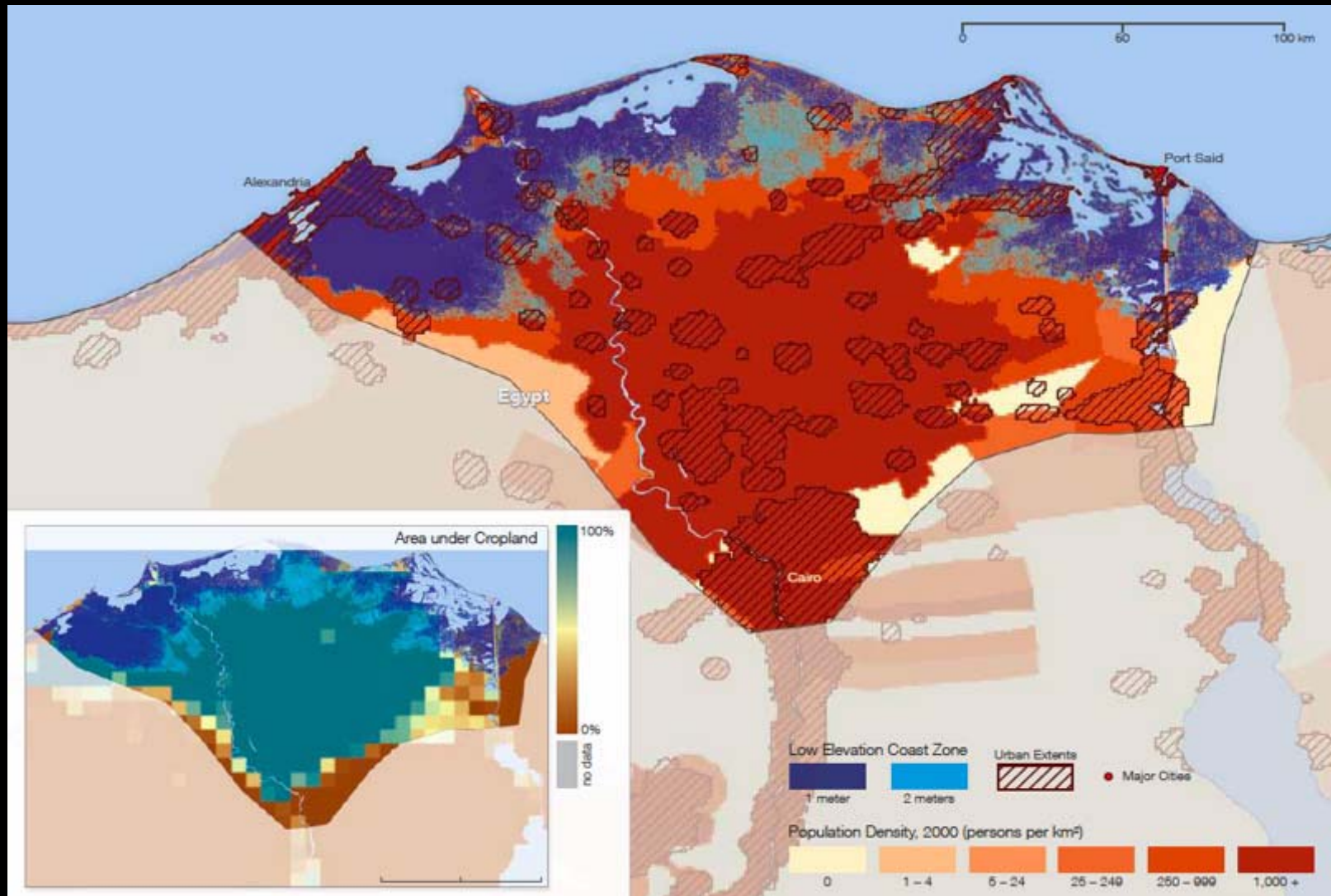
Migration as a survival strategy – The Ganges Delta



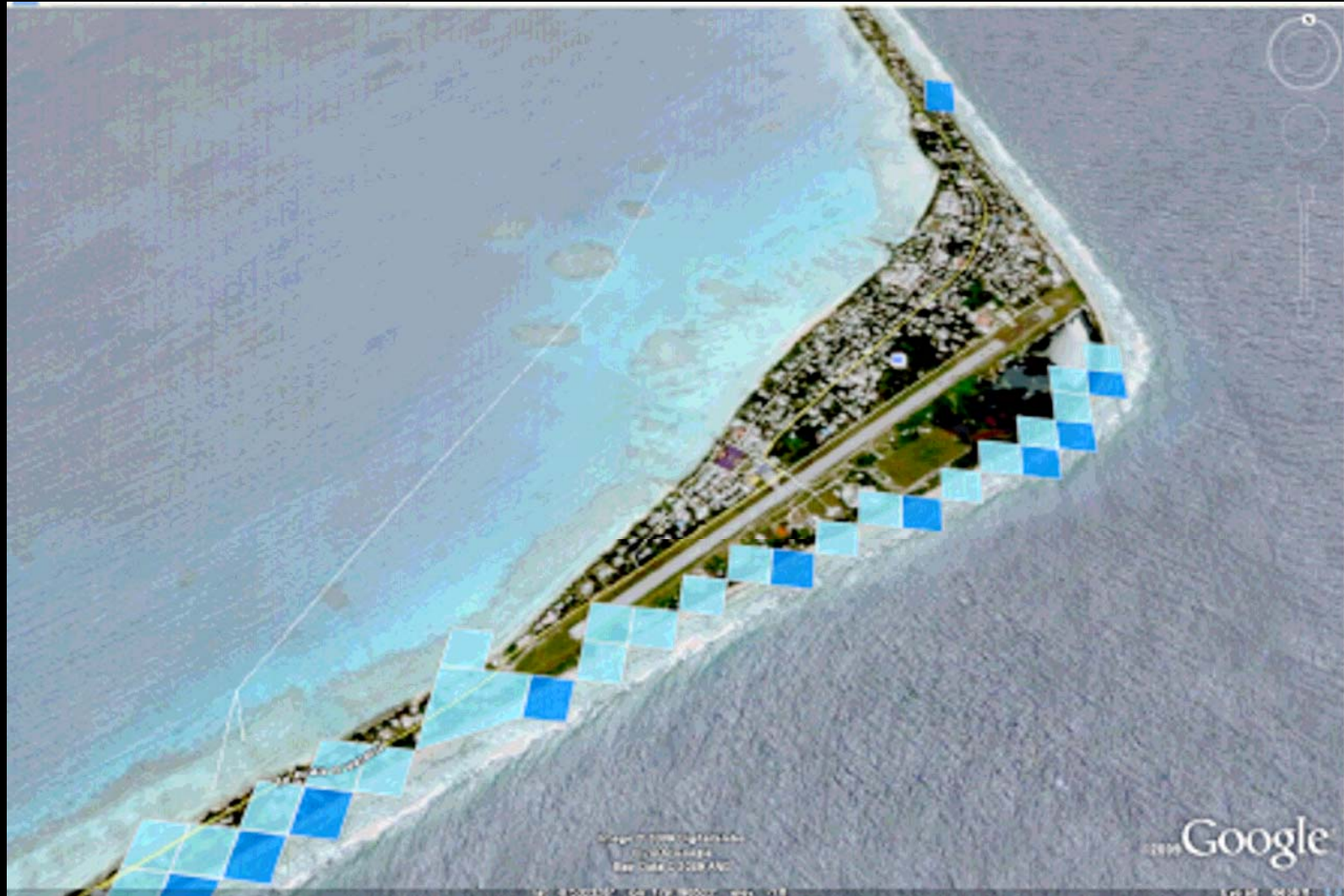
Living with floods and resettlement – The Mekong Delta



Between desertification & sea level rise - The Nile Delta



Sea level rise - Tuvalu



Sea level rise – The Maldives



6 Messages for Decision Makers

1. **Avoid dangerous climate change**
2. **Focus on human security**
3. **Invest in resilience**
4. **Prioritize the world's most vulnerable populations**
5. **Include migration in adaptation strategies**
6. **Close the gaps in protection**



Thank you

For further information:

Dr. Koko Warner (warner@ehs.unu.edu)

Dr. Charles Erhart (ehrhart@careclimatechange.org)

