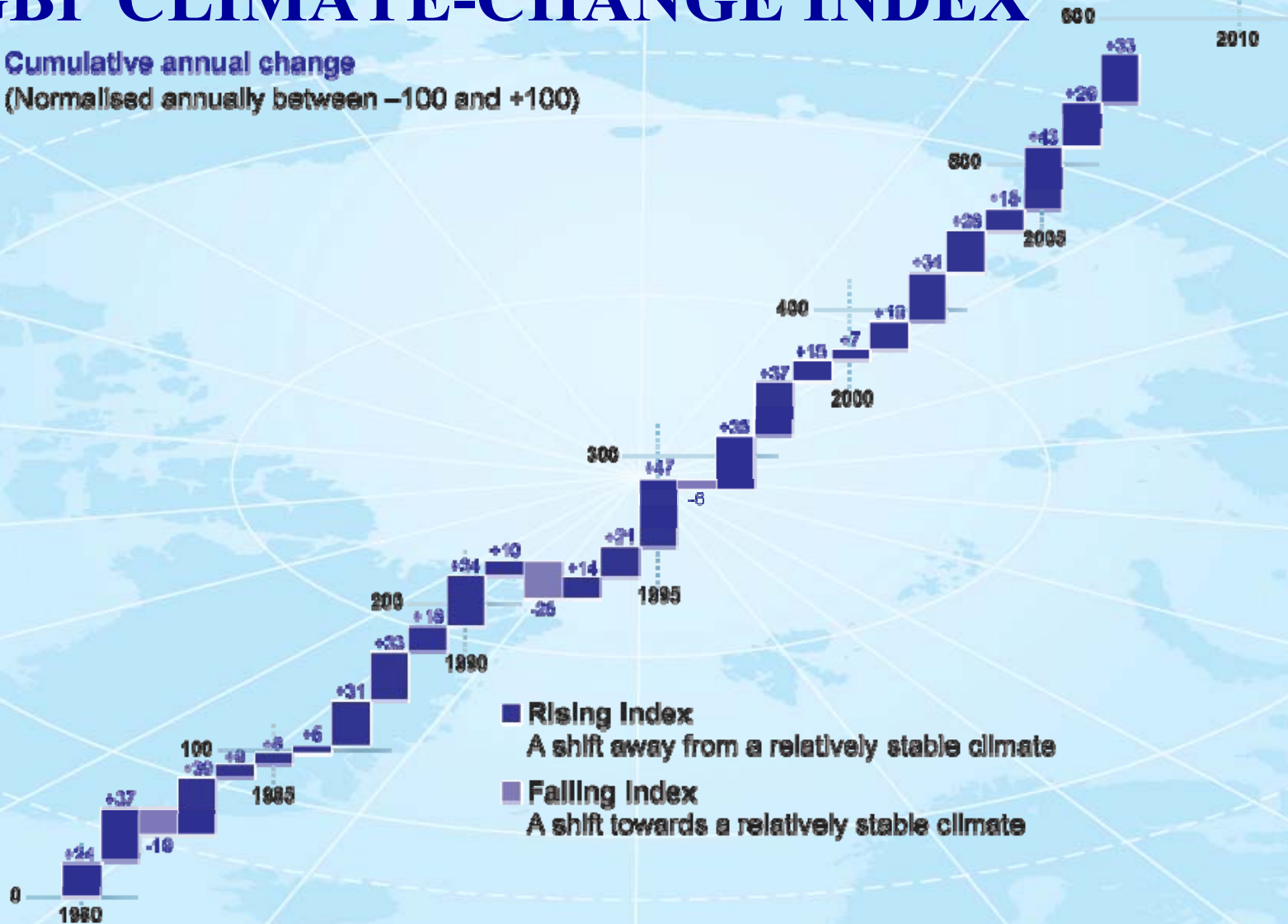


IGBP CLIMATE-CHANGE INDEX

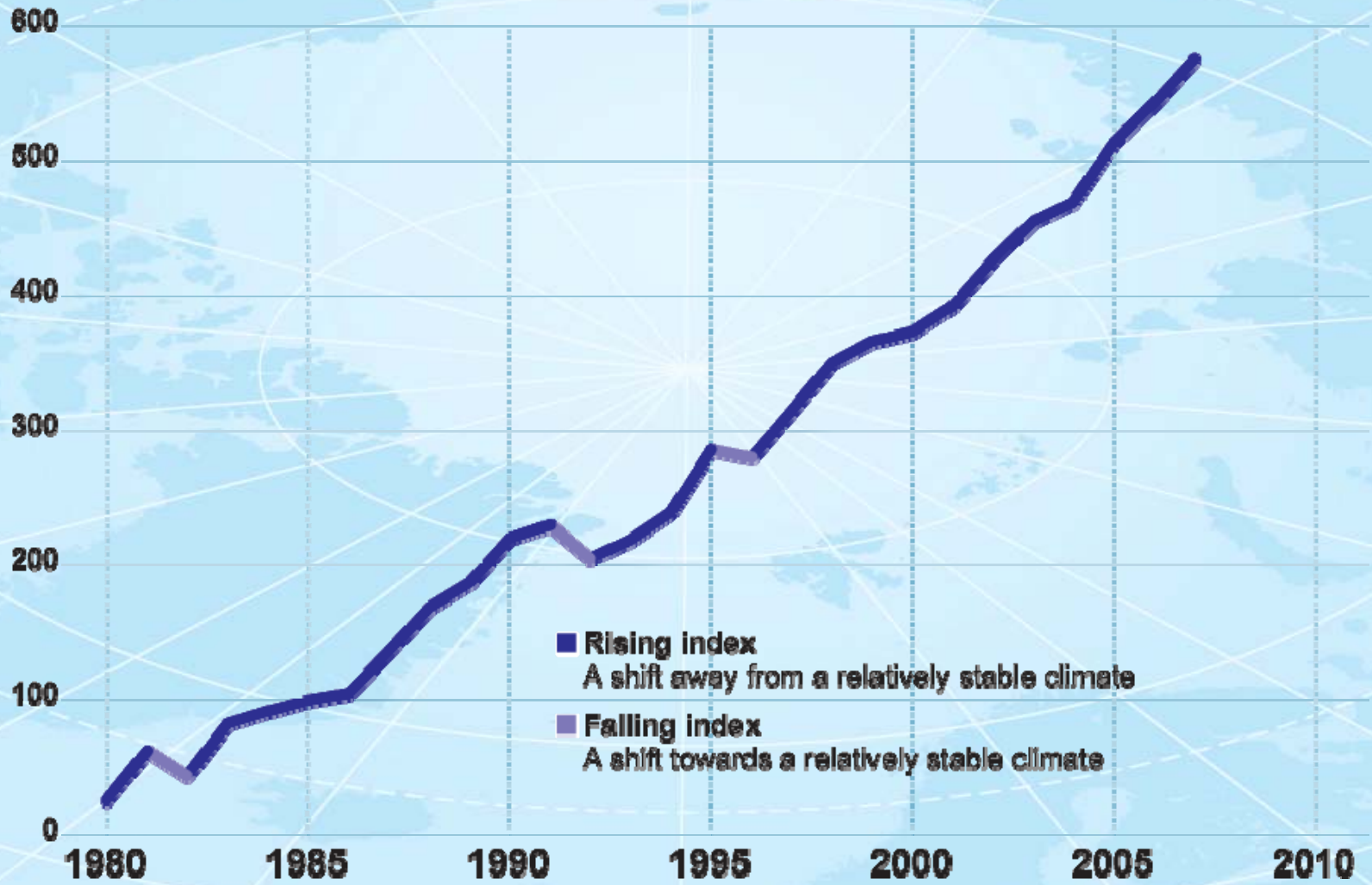
Cumulative annual change
(Normalised annually between -100 and +100)



- Rising Index
A shift away from a relatively stable climate
- Falling Index
A shift towards a relatively stable climate

IGBP CLIMATE-CHANGE INDEX

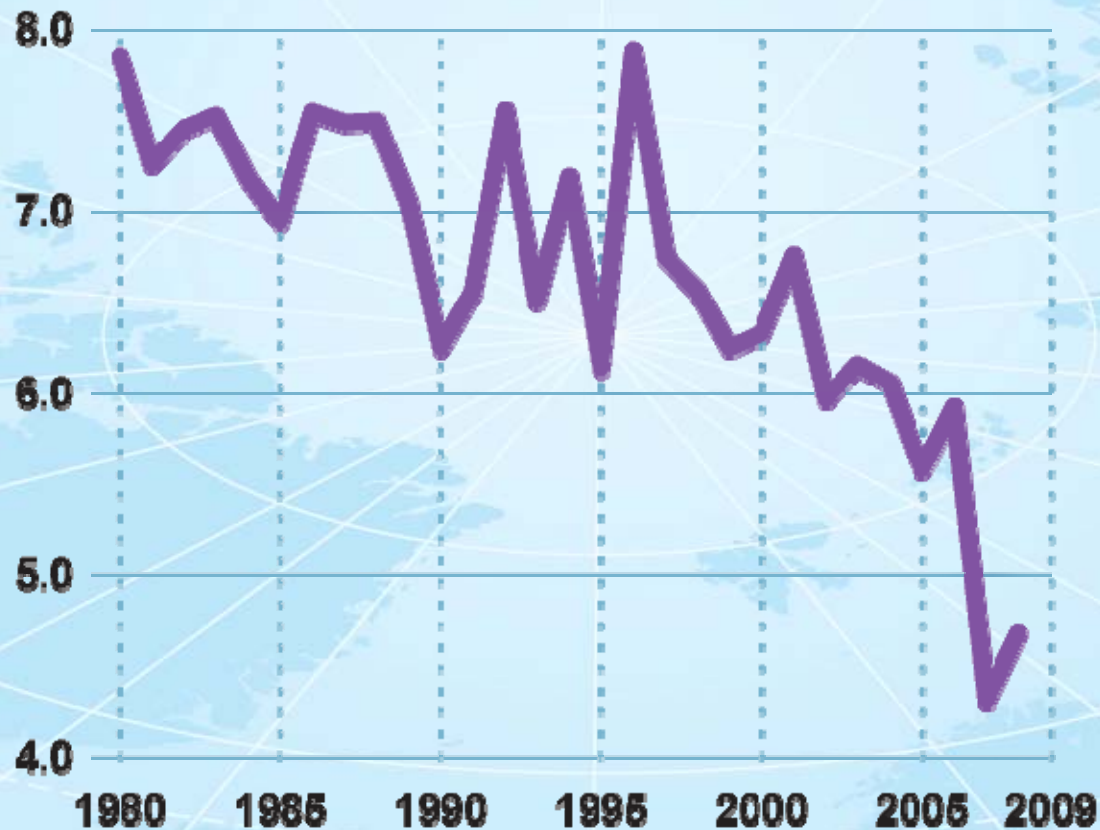
Cumulative annual change
(Normalised annually between -100 and +100)



- **Rising index**
A shift away from a relatively stable climate
- **Falling index**
A shift towards a relatively stable climate

ARTIC SEA-ICE COVER

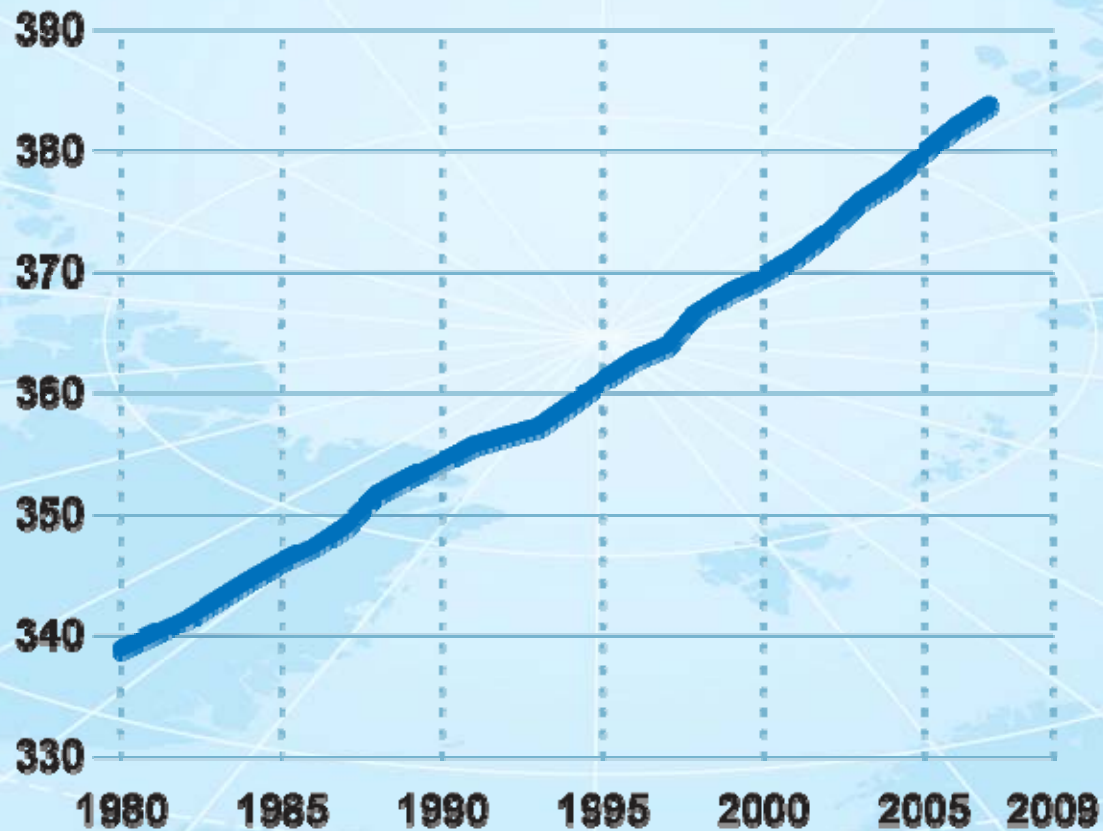
Northern hemisphere summer sea-ice minimum
(millions of square kilometres)



Source: NOAA

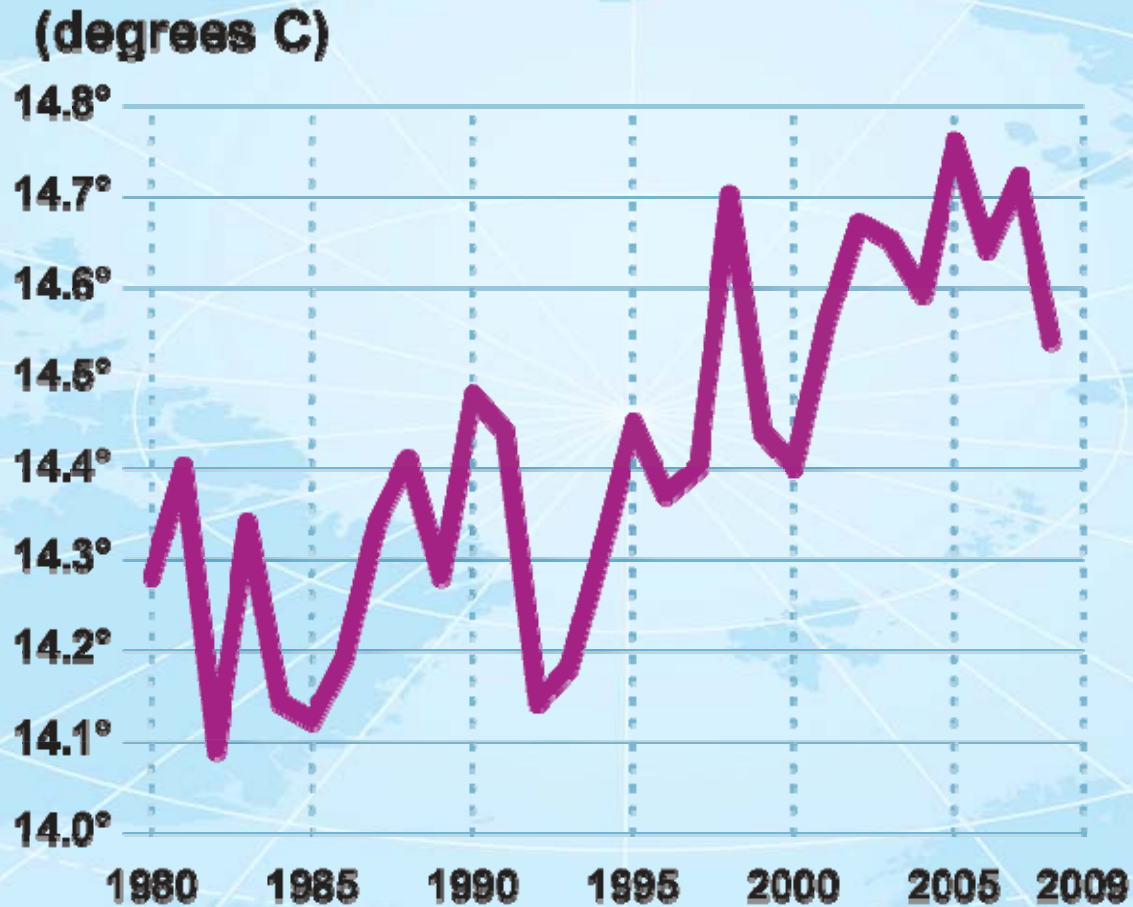
ATMOSPHERIC CO₂

(parts per million by volume)



Source: Carbon Dioxide Information Analysis Center, Mauna Loa

GLOBAL AVERAGE TEMPERATURE



Source: NASA

SEA LEVEL

(millimetres)



Source: Church and White global mean sea-level reconstruction (CSIRO) using data from the Permanent Service for Mean Sea Level, Proudman Oceanographic Laboratory, Natural Environment Research Council

IGBP CLIMATE-CHANGE INDEX

IGBP Climate-change index					
Date	Index	Cumulative change	Date	Index	Cumulative change
1980	24	24	1994	21	237
1981	37	61	1995	47	284
1982	-19	42	1996	-6	278
1983	39	81	1997	35	313
1984	9	90	1998	37	349
1985	8	98	1999	15	365
1986	5	103	2000	7	372
1987	31	134	2001	19	391
1988	33	167	2002	34	425
1989	18	185	2003	28	454
1990	34	218	2004	15	468
1991	10	228	2005	43	512
1992	-25	203	2006	29	541
1993	14	217	2007	33	574

IGBP'S NEW MAGAZINE





A large group of diverse people is walking on the surface of the Earth, some near the gauges and others in the foreground. The people are of various ages and ethnicities, representing the global population. They are walking along the curve of the Earth, which is shown with a blue sky and white clouds in the background.

