

UNFCCC Presents



From **Party**

to **UNFCCC** secretariat



to the **World.**



UNFCCC management of GHG emissions data and Kyoto Protocol accounting data to support the Convention and its Kyoto Protocol.

By the Reporting Data and Analysis programme of the **United Nations Framework Convention on Climate Change**



They need to submit the data to the UNFCCC secretariat in a number of agreed formats. They also need to prepare data related to their greenhouse gas emissions as well as to the Kyoto Protocol mechanisms.

Accounting data Communications

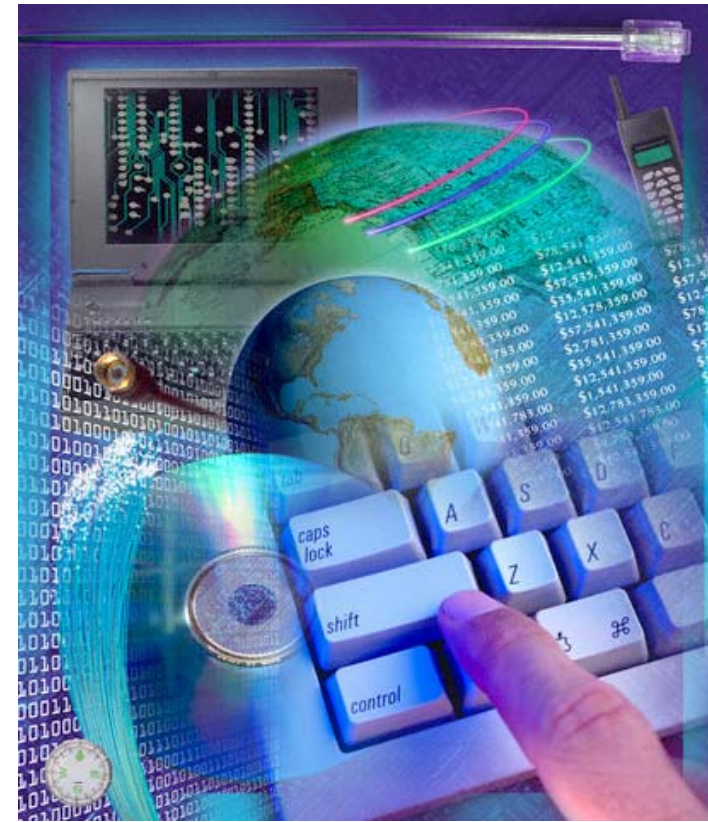
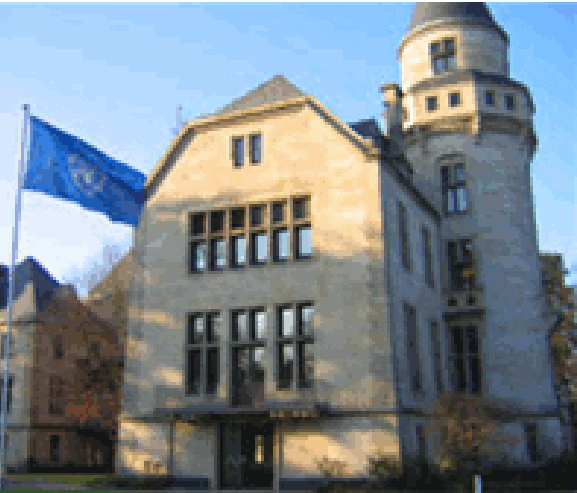


Under the Kyoto Protocol, Annex B Parties are encouraged to report on the progress towards the commitment to reduce greenhouse gas emissions with the objective of limiting the global temperature increase to 2°C. Secretariat.

Submissions



Parties submit these data electronically to the UNFCCC secretariat using the Submission Portal.



The UNFCCC secretariat checks the submissions, structures the data and imports them into its GHG database.



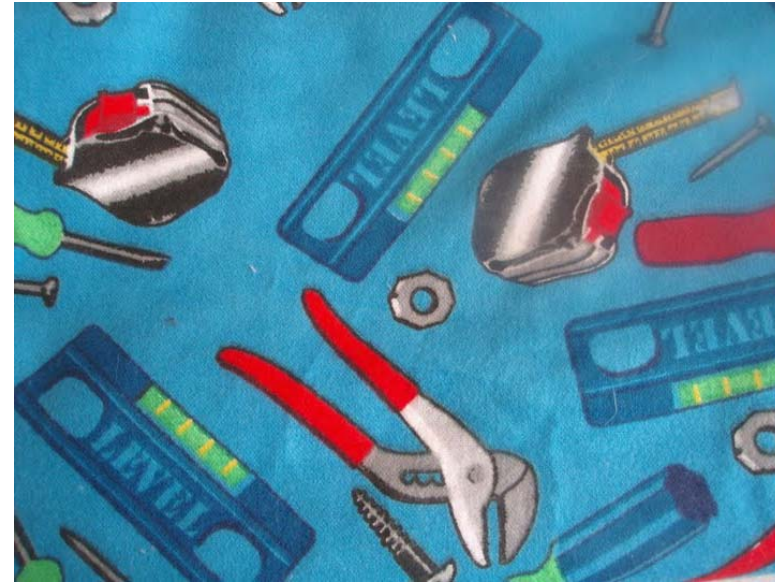
Forming and analysis purposes and contains the intelligence (B) the applications data warehouse...



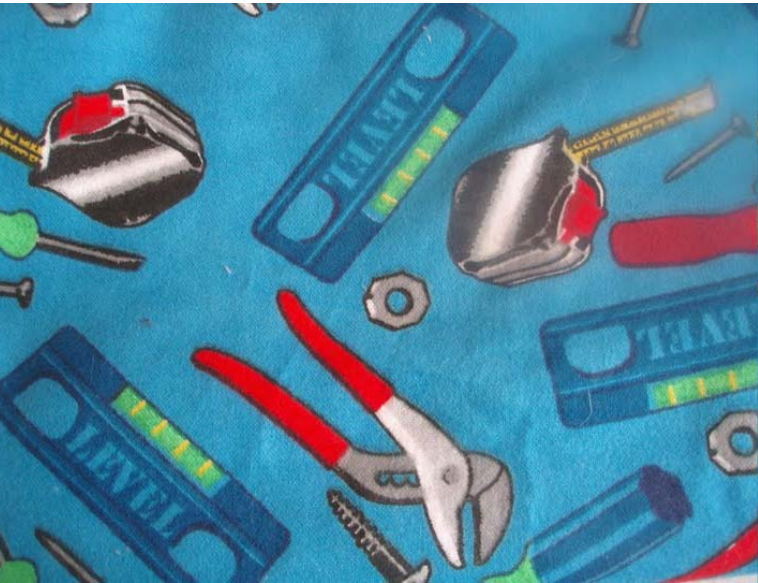
This approach enables efficient and consistent reporting, analysis and publication of the vast amount of data received.



It forms a basis for many queries, publications and tools.



The review tools are used to support the official review process of Annex I Parties by the expert review teams (ERTs).



International teams of inventory experts examine the data, methodologies and procedures used in preparing the national inventory.



Process Type	Subm.Year	Inv.Base Year	Process Status	Release Status
IR	2007	1990	Final	Approved

W - Process Parameters	W - Eligibility	W - Adjustments
Parameter	<i>The fields indicated with an (*) are mandatory.</i>	
General Parameters		
1) GHG emissions for calculation of assigned amount as reported		547,699,841
2) Final GHG emissions for calculation of assigned amount		547,699,841 [t CO ₂ e]
3) Assigned amount	IS!	2,957,579,143
4) Commitment period reserve	IS!	2,661,821,229
5) Initial submission date		11/03/2008
6) Resubmission date		21/10/2008
7) Resubmission version		v.1.9
In response to the course submitted r		

To track the progress of Annex B Parties in relation to their KP units in commitments under the Kyoto Protocol, the UNFCCC secretariat...
 To enter the information on commitments, GHG emissions and KP units in the Commitment and Accounting Database (CAD)...

Process Type	Subm.Year	Inv./Base Year	Process Status	Release Status	A
IR	2007	1990	Final	Approved	1

W - Process Parameters	W - Eligibility	W - Adjustments
Parameter	<i>The fields indicated with an (*) are mandatory.</i>	
Value		
General Parameters		
1) GHG emissions for calculation of assigned amount as reported		547,699,841
2) Final GHG emissions for calculation of assigned amount		547,699,841 [t CO
3) Assigned amount	ISI	2,957,579,143
4) Commitment period reserve	ISI	2,661,821,229
5) Initial submission date		11/03/2008
6) Resubmission date		21/10/2008
7) Resubmission version		v.1.9
		In response the course o submitted re



Data from the CAD are also loaded into the UNFCCC Data warehouse and made accessible to the secretariat's BI applications.



Some of the reports, analysis and publications created from this data warehouse with the business intelligence tools are:



Microsoft Excel - SA1_2009_1_Energy.xls

File Edit View Insert Format Tools Data Window Help

Times New Roman 10 B I U

J17 39.6740662438337

Table 1.37

CO₂ emissions from navigation - trend information

CO₂ emissions (Gg)

Relative change (%)

	Base year	2007	1990 to 1991	1994 to 1995	1995 to 1996	1996 to 1997	1997 to 1998	1998 to 1999	1999 to 2000	2000 to 2001	2001 to 2002
Australia	2,939	2,730	-12	19.8	3.5	-0.3	-24.6	-11.6	4.8	-10.5	-6.3
Austria	53	89	-32	9.6	2.0	-0.1	7.7	-2.0	7.7	3.7	9.3
Belarus	NA, NA	17	-	-	-	-	-	-	-	-	-
Belgium	298	472	-2.0	4.9	2.4	1.9	2.5	4.3	8.3	2.3	2.0
Bulgaria	1,000	NA, NA	-93.0	2.1	102.0	-23.1	65.6	-23.6	-	-	-
Canada	4,693	5,744	4.4	-6.8	2.4	1.4	14.8	-3.9	2.8	8.6	-0.8
Croatia	53	50	-19.6	12.7	5.4	-20.7	-23.5	-3.1	-2.3	7.2	20.0
Czech Republic	96	36	-2.8	3.2	-36.5	-8.6	-2.6	-47.7	-28.3	69.0	-20.0
Denmark	733	654	0.0	5.0	3.2	-2.3	-18.6	-12.2	-13.8	-3.1	-1.0
Estonia	533	54	17.6	-97.3	77.4	-13.6	-1.9	-2.8	-28.2	-4.1	52.4
European Community	19,493	21,444	1.4	-5.0	2.3	-0.1	4.2	-0.6	-10.9	1.8	-2.4
Finland	441	514	0.6	6.4	4.3	8.4	-2.1	4.5	0.4	-8.5	5.4
France	1,074	3,388	-19.6	2.8	-7.4	-0.8	1.6	3.2	19.2	16.3	13.3
Germany	2,050	533	1.0	-21.0	-8.3	-20.9	8.4	-18.5	-7.2	-3.4	-2.8
Greece	3,636	2,203	1.4	-4.3	16.3	2.4	16.4	-1.1	42.8	25.8	-3.3
Hungary	10	3	-8.3	-58.1	17.9	7.7	-26.8	-48.3	6.7	-4.3	100.0
Iceland	59	89	-8.6	35.7	17.4	-28.5	-23.4	11.2	-30.6	62.1	8.9
Ireland	34	4	-6.1	-6.0	3.0	6.8	5.6	5.4	2.5	-7.1	-5.4
Italy	5,420	4,870	7.4	-2.0	12.3	3.7	2.8	-4.4	-6.2	-2.0	4.2
Japan	13,226	12,416	4.2	3.1	5.8	6.3	10.1	-4.4	14.1	-3.1	1.0
Latvia	17	5	16.8	4.5	3.0	-5.2	-0.3	4.5	4.4	0.3	-3.2
Liechtenstein	NA, NA	NA, NA	-	-	-	-	-	-	-	-	-
Lithuania	36	18	75.0	-2.0	46.5	0.5	30.0	-41.4	-3.8	17.2	13.8
Luxembourg	0	0	2.6	0.8	-6.2	19.9	-3.1	17.4	3.9	0.2	-1.1
Macao	1	2	28.7	-5.1	-16.8	13.7	-19.7	26.4	48.1	22.8	16.2
Netherlands	406	600	-2.3	-5.7	-8.0	9.0	5.2	20.8	-2.1	-0.4	2.8
New Zealand	244	200	-0.1	-3.4	-10.1	-25.5	-21.9	11.5	10.9	-12.3	16.2
Norway	1,163	2,209	-0.2	4.2	5.5	18.4	4.8	9.2	-6.5	19.3	1.6
Poland	343	18	43.8	57.6	2.0	-15.1	-13.9	44.4	-43.8	43.8	16.2
Portugal	262	478	-4.9	-7.8	4.5	3.8	2.2	-16.0	-10.1	-3.8	4.3
Romania	267	38	-35.2	-15.3	26.3	164.4	-114.0	-20.0	-15.5	-19.4	144.6
Russian Federation	16,038	12,573	-3.1	21.6	-3.4	28.3	-33.1	39.2	118.1	-39.3	9.6
Slovakia	NA, NA	NA, NA	-	-	-	-	-	-	-	-	-
Slovenia	E, NA, NA	E, NA, NA	-	-	-	-	-	-	-	-	-
Spain	1,561	3,269	-0.8	16.8	3.1	-20.2	0.4	24.0	4.5	13.3	11.5
Sweden	540	445	-24.8	18.3	-23.1	22.1	21.3	-21.3	-1.4	-2.2	-2.2
Switzerland	151	170	-0.4	-0.4	0.6	0.6	0.6	0.6	0.6	0.4	0.4
Taiwan	437	1,568	6.7	16.5	-3.2	-6.2	4.0	-2.2	-5.3	29.5	2.2
Ukraine	2,664	238	-	-	-	-	-	0.4	1.9	4.8	0.1
United Kingdom	4,112	4,013	4.5	-2.2	8.1	-3.6	-6.0	-2.2	-3.3	-17.5	-8.0
United States	39,556	49,023	-19.3	-13.1	-2.2	19.5	-13.0	-2.2	12.8	-19.1	9.8

Ready

The synthesis and analysis report, Part I and II.





UNITED
NATIONS



Framework Convention
on Climate Change

SUBSIDIARY BODY FOR IMPLEMENTATION

Thirty-first session

Copenhagen, 7–18 December 2009*

Item 3 (a) of the provisional agenda

National communications and greenhouse gas inventory data from

Parties included in Annex I to the Convention

Report on national greenhouse gas inventory data from Parties in

Annex I to the Convention for the period 1990–2007

National greenhouse gas inventory data

Note by the secretariat

The annual greenhouse gas inventory data report.





Flexible GHG data queries - Mozilla Firefox

Flexible GHG data queries

UNFCCC Google Search

Essential Background
Documentation
Meetings
Kyoto Protocol
Cooperation & Support
Adaptation
National Reports
GHG Data
OHG Data - UNFCCC
Data sources
Time series - Annex I
OHG profiles
Detailed data by Party
Comparisons by gas
Comparisons by category
Flexible queries
Global map - Annex I
KP Data - UNFCCC
OHG Data - Non-UNFCCC
Online Help
Contact
Methods & Science
Parties & Observers
Press
Secretariat
Issues Quickfinder

Flexible GHG data queries (?)

Please select one item in every select box. Then press GO.

Category: Total GHG emissions including LULUCF/LUCF
Classification: Total for category
Type of value: Net emissions/removals
Gas: Aggregate GHGs
Unit: Gg CO2 equivalent

Change Layout >>>
Show item selection >>>

Export to Excel, Export to CSV File, Printer friendly version, Switch to Graph Page >>>

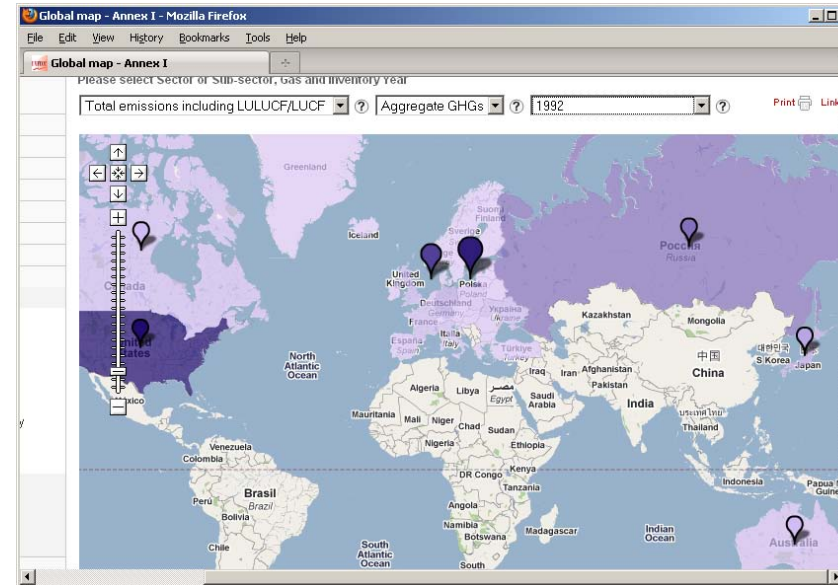
Annual Greenhouse gas (GHG) emissions, in Gg CO2 equivalent

Query results for Category: Total OHG emissions including LULUCF/LUCF - Classification: Total for category - Type of value: Net emissions/removals

	Base year	1990	1991	1992	1993	1994	1995
Australia	452,792.59	452,792.59	550,727.52	482,049.49	422,602.29	305,259.86	54
Austria	65,858.99	65,858.99	64,038.10	62,359.28	58,384.50	60,319.38	6
Belarus	107,100.96	107,100.96	97,007.22	88,937.07	73,657.69	56,316.09	4
Belgium	141,827.17	141,827.17	143,874.89	141,102.23	140,097.14	146,361.50	14
Bulgaria	128,897.43	111,598.14	88,454.89	79,143.48	78,945.98	77,496.09	8
Canada	540,227.12	540,227.12	553,132.29	523,249.47	600,352.60	618,261.95	83
Croatia	27,188.79	27,188.79	16,055.73	13,766.20	14,963.27	13,544.10	1
Czech Republic	190,147.59	190,147.59	171,194.99	152,871.07	140,125.20	140,389.87	14
Denmark	70,964.77	70,964.77	78,267.71	73,212.20	75,774.76	78,711.06	7
Estonia	35,567.34	35,567.34	32,881.62	19,867.83	14,048.87	16,127.37	1

The GHG data interface with the flexible queries and many other useful features (see presentation on the other screen for details).





The global map with emissions data for Annex I Parties.



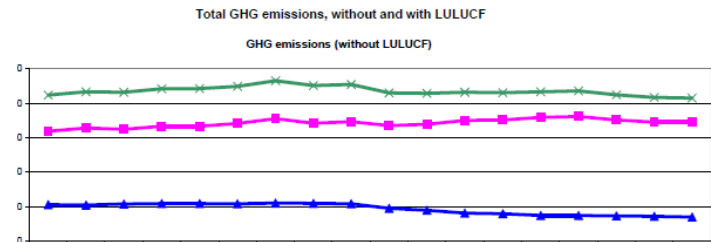


	Emissions, in Gg CO ₂ equivalent		
	1990	2000	2007
Emissions without LULUCF	150,311.5	169,519.2	172,556.9
Emissions/removals by LULUCF	2,597.1	2,511.5	2,537.2
Emissions/removals with LULUCF	161,908.9	172,130.7	175,194.2
Emissions without LULUCF	211,966.6	214,427.5	207,503.8
Emissions/removals by LULUCF	2,597.1	2,511.5	2,537.2
Emissions/removals with LULUCF	214,563.7	216,939.0	210,041.0

	Changes in emissions, in per cent		
	From 1990 to 2000	From 2000 to 2007	From 1990 to 2007
Emissions without LULUCF	8.5	1.8	8.4
Emissions/removals by LULUCF	-3.3	1.0	-2.3
Emissions/removals with LULUCF	6.3	1.8	8.2
Emissions without LULUCF	1.1	-3.2	-2.1
Emissions/removals by LULUCF	-3.3	1.0	-2.3
Emissions/removals with LULUCF	1.1	-3.2	-2.1

	Average annual growth rates, in per cent per year		
	From 1990 to 2000	From 2000 to 2007	From 1990 to 2007
Emissions without LULUCF	0.6	0.3	0.5
Emissions/removals by LULUCF	-0.3	0.1	-0.1
Emissions/removals with LULUCF	0.6	0.3	0.5
Emissions without LULUCF	0.1	-0.5	-0.1
Emissions/removals by LULUCF	-0.3	0.1	-0.1
Emissions/removals with LULUCF	0.1	-0.5	-0.1

under the Climate Change Convention is 1990 except for Bulgaria (1988), Hungary (average of 1985 to 1997), Poland (1988), Romania (1989) and Slovenia (1986), as shown in SICP.2 and 11ICP.4.



Country profiles.





**Framework Convention
on Climate Change**

Distr.
GENERAL

FCCC/KP/CMP/2009/15
21 October 2009

Original: ENGLISH

**CONFERENCE OF THE PARTIES SERVING AS THE
MEETING OF THE PARTIES TO THE KYOTO PROTOCOL**
Fifth session
Copenhagen, 7–18 December 2009

Item 11 (c) of the provisional agenda
Review of implementation of commitments and of other provisions of the Kyoto Protocol
Annual compilation and accounting report for Annex B Parties under the Kyoto Protocol

**Annual compilation and accounting report for Annex B Parties under the
Kyoto Protocol**

Note by the secretariat*

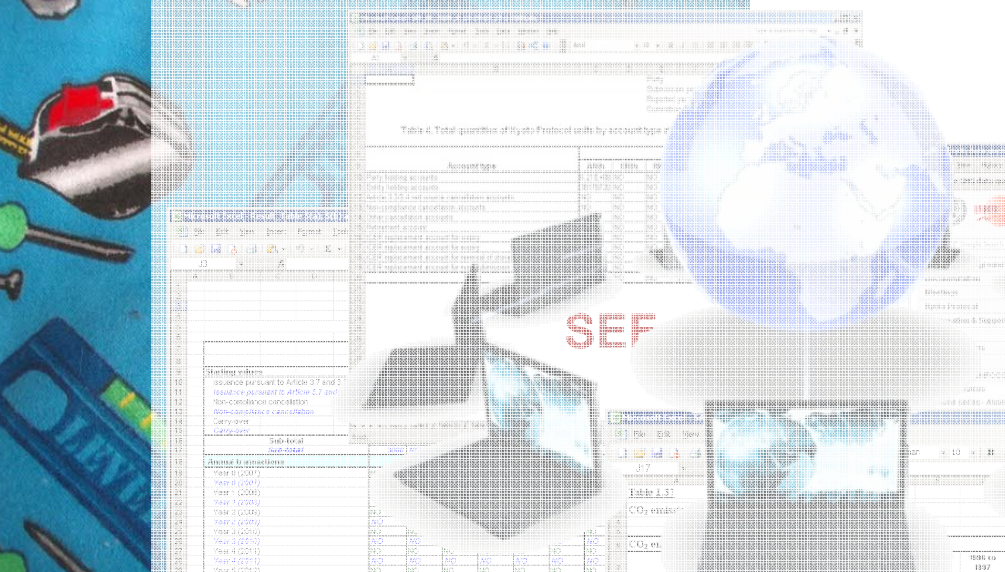
The annual compilation and accounting report.





And many, many more reports, web pages and ad-hoc data requests.

**CONFERENCE OF THE PARTIES SERVING AS THE
MEETING OF THE PARTIES TO THE KYOTO PROTOCOL.**
First session



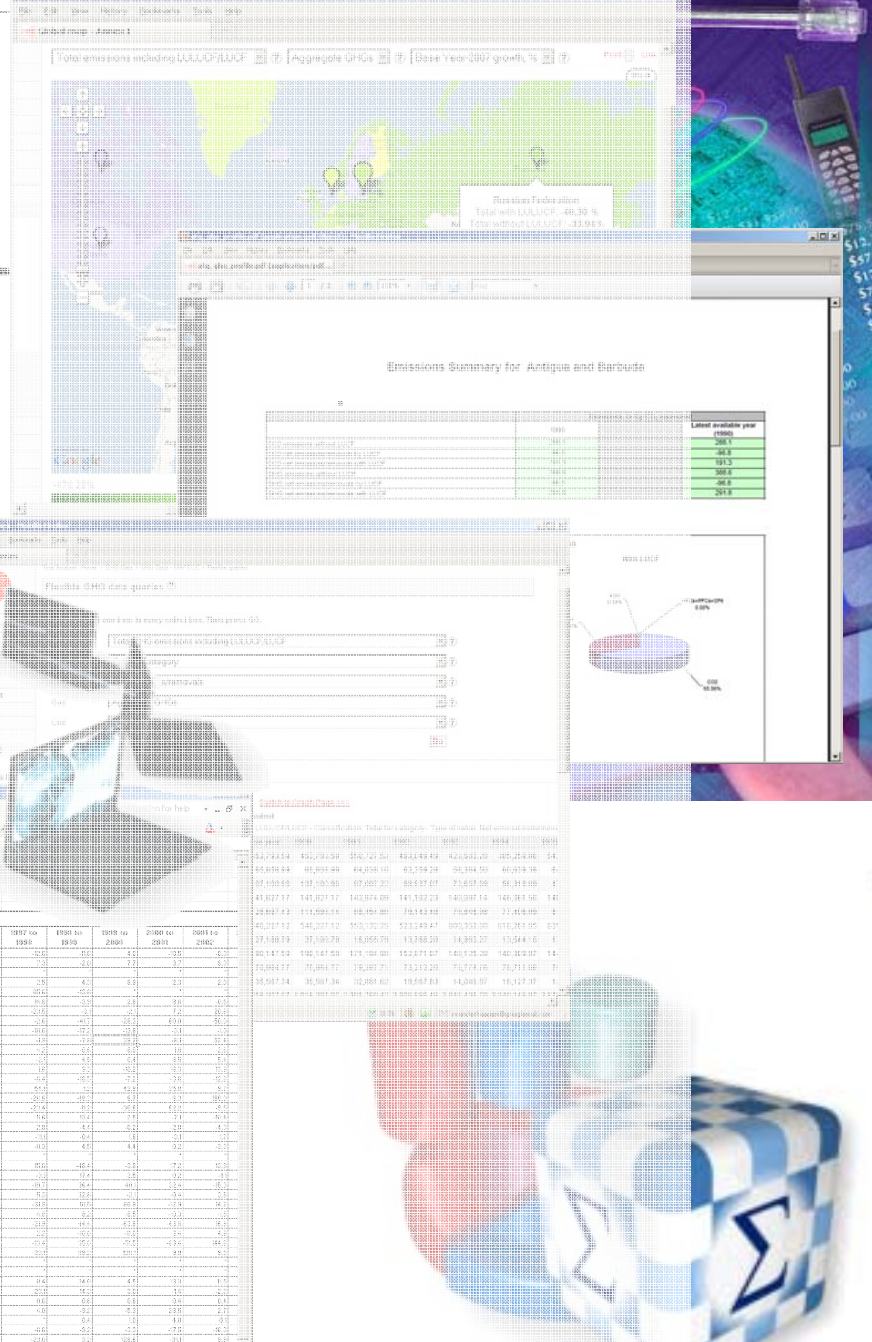
SEF

Table 4. Total quantities of Kyoto Protocol units by account type

Account type	1995	1996	1997
Party holding accounts	420,000	420,000	420,000
Party holding units	420,000	420,000	420,000
Total 1995-1997 units in circulation	420,000	420,000	420,000
Non-synchronous certificate transfers	0	0	0
Non-synchronous transfers	0	0	0
Residual units held by Parties	420,000	420,000	420,000
Residual units held by Parties (including units held by Parties that have not submitted their 2008 and 2009 inventories)	420,000	420,000	420,000
Residual units held by Parties (including units held by Parties that have not submitted their 2008 and 2009 inventories)	420,000	420,000	420,000

Table 5. Summary information on entitlement


Party	1995	1996	1997	2008	2009
Australia	35,000,000	35,000,000	35,000,000	35,000,000	35,000,000
Bahrain	0	0	0	0	0
Belgium	50,000,000	50,000,000	50,000,000	50,000,000	50,000,000
Bulgaria	0	0	0	0	0
Canada	16,000,000	16,000,000	16,000,000	16,000,000	16,000,000
China	0	0	0	0	0
Denmark	0	0	0	0	0
Egypt	0	0	0	0	0
El Salvador	0	0	0	0	0
European Communities	12,000,000	12,000,000	12,000,000	12,000,000	12,000,000
Finland	0	0	0	0	0
France	28,000,000	28,000,000	28,000,000	28,000,000	28,000,000
Germany	15,000,000	15,000,000	15,000,000	15,000,000	15,000,000
Ghana	0	0	0	0	0
Greenland	0	0	0	0	0
Guatemala	0	0	0	0	0
India	0	0	0	0	0
Indonesia	0	0	0	0	0
Japan	16,000,000	16,000,000	16,000,000	16,000,000	16,000,000
Kazakhstan	0	0	0	0	0
Korea	0	0	0	0	0
Latvia	0	0	0	0	0
Lithuania	0	0	0	0	0
Luxembourg	0	0	0	0	0
Maldives	0	0	0	0	0
Mexico	0	0	0	0	0
Moldova	0	0	0	0	0
Morocco	0	0	0	0	0
Netherlands	0	0	0	0	0
New Zealand	0	0	0	0	0
Nigeria	0	0	0	0	0
Paraguay	0	0	0	0	0
Peru	0	0	0	0	0
Poland	0	0	0	0	0
Romania	0	0	0	0	0
Russian Federation	0	0	0	0	0
Saudi Arabia	0	0	0	0	0
Slovakia	0	0	0	0	0
Slovenia	0	0	0	0	0
Spain	0	0	0	0	0
Sweden	0	0	0	0	0
Switzerland	0	0	0	0	0
Taiwan	0	0	0	0	0
Tanzania	0	0	0	0	0
Turkey	0	0	0	0	0
Ukraine	0	0	0	0	0
United Kingdom	10,000,000	10,000,000	10,000,000	10,000,000	10,000,000
United States	0	0	0	0	0



Emissions Summary for Antigua and Barbuda

Year	1995	1996	1997	2008	2009
Total	10,000	10,000	10,000	10,000	10,000

Total emissions including LULUCF: 48,30 t



- 1) GHG emission reported
- 2) Final GHG emission
- 3) Assigned amount
- 4) Commitment period reserve
- 5) Initial submission date
- 6) Resubmission date
- 7) Resubmission version

The accession will be UNFCCC reporting guidelines on annual GHG inventories of Parties. The Party (B3) should be the base year for the estimation and reporting of inventories. However, it is not necessary to use the same base year for all Parties. The base year should be the year of the initial submission of the first inventory. The base year should be the year of the first submission of the first inventory.



Framework Convention on Climate Change

Distr.
GENERAL

FCCC/KP/CMP/2009/15
21 October 2009

Original: ENGLISH

CONFERENCE OF THE PARTIES SERVING AS THE MEETING OF THE PARTIES TO THE KYOTO PROTOCOL

- 1) GHG emission reported
- 2) Final GHG emission
- 3) Assigned amount
- 4) Commitment period reserve
- 5) Initial submission date
- 6) Resubmission date
- 7) Resubmission version

Table 4. Total quantities of Kyoto Protocols by account type

Account type	2008		2009	
	Units	% of total	Units	% of total
Particulate matter	1 476 822	0.004	1 476 822	0.004
Lead	16 560 136	0.002	16 560 136	0.002
Mercury	13 744	0.000	13 744	0.000
Perfluorinated hydrocarbons (PFHCS)	13 744	0.000	13 744	0.000
Other air pollutants	13 744	0.000	13 744	0.000
Perchlorated hydrocarbons (PCHCS)	13 744	0.000	13 744	0.000
Other greenhouse gases	13 744	0.000	13 744	0.000
Other pollutants	13 744	0.000	13 744	0.000
Total	21 411 100	100.000	21 411 100	100.000

Table 5 (a). Summary information on replacement

Country	2008	2009	2010	2011	2012	2013	2014	2015	2016
Australia									
Austria									
Bahrain									
Bangladesh									
Belgium									
Bolivia									
Brazil									
Canada									
Chile									
China									
Czechia									
Denmark									
Ecuador									
Egypt									
El Salvador									
Finland									
France									
Germany									
Ghana									
Greece									
Guatemala									
Hong Kong, China									
India									
Indonesia									
Italy									
Japan									
Korea									
Lebanon									
Lithuania									
Luxembourg									
Malaysia									
Maldives									
Marshall Islands									
Mexico									
Moldova									
Morocco									
New Zealand									
Norway									
Oman									
Pakistan									
Panama									
Paraguay									
Peru									
Romania									
Russian Federation									
Saudi Arabia									
Slovenia									
Sri Lanka									
Sudan									
Switzerland									
Taiwan									
Tanzania									
Turkey									
Turkmenistan									
United States									
Uzbekistan									
Vanuatu									
Venezuela									
Yemen									

Emissions Summary for Antigua and Barbuda

Year	CO ₂	CH ₄	N ₂ O	HFC	PFC	Total
1990	100.00	0.00	0.00	0.00	0.00	100.00
1995	110.00	0.00	0.00	0.00	0.00	110.00
2000	120.00	0.00	0.00	0.00	0.00	120.00
2005	130.00	0.00	0.00	0.00	0.00	130.00
2006	140.00	0.00	0.00	0.00	0.00	140.00
2007	150.00	0.00	0.00	0.00	0.00	150.00
2008	160.00	0.00	0.00	0.00	0.00	160.00
2009	170.00	0.00	0.00	0.00	0.00	170.00
2010	180.00	0.00	0.00	0.00	0.00	180.00
2011	190.00	0.00	0.00	0.00	0.00	190.00
2012	200.00	0.00	0.00	0.00	0.00	200.00
2013	210.00	0.00	0.00	0.00	0.00	210.00
2014	220.00	0.00	0.00	0.00	0.00	220.00
2015	230.00	0.00	0.00	0.00	0.00	230.00
2016	240.00	0.00	0.00	0.00	0.00	240.00

In accordance with the UNFCCC reporting guidelines, annual GHG emissions of Annex I Parties, other than EU member States, are reported in million tonnes of CO₂-equivalent (Mtpce) based on the 100-year global warming potential (GWPs) as defined in the most recent IPCC Assessment Report. The 100-year GWPs are: CH₄ 25, N₂O 298, HFC 100, PFC 100 and SF₆ 23,800. EU member States report their GHG emissions in million tonnes of CO₂-equivalent (Mtpce) based on the 100-year GWPs as defined in the most recent IPCC Assessment Report. The 100-year GWPs are: CH₄ 25, N₂O 298, HFC 100, PFC 100 and SF₆ 23,800. The 100-year GWPs are: CH₄ 25, N₂O 298, HFC 100, PFC 100 and SF₆ 23,800.



Framework Convention
on Climate Change

Distr.
GENERAL

FCCC/KP/CMP/2009/15
21 October 2009

Original: ENGLISH

CONFERENCE OF THE PARTIES SERVING AS THE
MEETING OF THE PARTIES TO THE KYOTO PROTOCOL
First session



- 1) GHG emission reported
- 2) Final GHG emission
- 3) Assigned amount
- 4) Commitment period has served
- 5) Initial submission date
- 6) Resubmission date
- 7) Resubmission version

Table 4. Total quantity of Kyoto Protocol units by account type

Account type	2008	2009	2010
Participating account	100	100	100
Non-participating account	100	100	100
Other account	100	100	100
Total	300	300	300

Table 5. Summary information on compliance

Party	Assigned amount	Final GHG emission	Assigned amount	Commitment period has served	Initial submission date	Resubmission date	Resubmission version
Antigua and Barbuda	100	100	100	100	100	100	100
...
Total	300	300	300	300	300	300	300

SEF

CO₂ emissions

Country	1990 to 1994	1995 to 1999	2000 to 2004	2005 to 2008
Algeria	100	100	100	100
...
Total	300	300	300	300

Emissions Summary for Antigua and Barbuda

Year	Total emissions including LULUCF	Change in emissions
2007	100	100
2008	100	100
2009	100	100
2010	100	100
2011	100	100
2012	100	100

Other 10%
Transport 10%
Industry 10%
Buildings 10%
Electricity and heat 10%
Manufacturing and construction 10%
International aviation and shipping 10%





Framework Convention on Climate Change

Distr.
GENERAL

FCCC/KP/CMP/2009/15
21 October 2009

Original: ENGLISH

CONFERENCE OF THE PARTIES SERVING AS THE MEETING OF THE PARTIES TO THE KYOTO PROTOCOL

Table 4. Total quantities of Kyoto Protocol units by account type

Account type	2008			2009		
	Units	Units	Units	Units	Units	Units
Early trading in units	1,000,000	1,000,000	1,000,000	1,000,000	1,000,000	1,000,000
Units issued in 2008	1,000,000	1,000,000	1,000,000	1,000,000	1,000,000	1,000,000
Units issued in 2009	1,000,000	1,000,000	1,000,000	1,000,000	1,000,000	1,000,000
Units cancelled in 2008	1,000,000	1,000,000	1,000,000	1,000,000	1,000,000	1,000,000
Units cancelled in 2009	1,000,000	1,000,000	1,000,000	1,000,000	1,000,000	1,000,000
Units held in 2008	1,000,000	1,000,000	1,000,000	1,000,000	1,000,000	1,000,000
Units held in 2009	1,000,000	1,000,000	1,000,000	1,000,000	1,000,000	1,000,000

- 1) GHG emission reported
- 2) Final GHG emission
- 3) Assigned amount
- 4) Commitment period reserve
- 5) Initial submission date
- 6) Resubmission date
- 7) Resubmission version

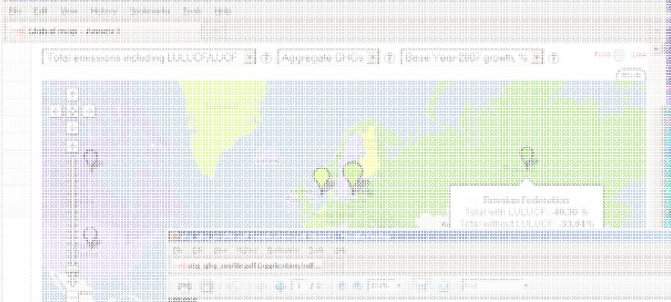
Table 5. Summary information on replacement

Party	Units	Units	Units	Units	Units	Units
Australia	1,000,000	1,000,000	1,000,000	1,000,000	1,000,000	1,000,000
Canada	1,000,000	1,000,000	1,000,000	1,000,000	1,000,000	1,000,000
EU	1,000,000	1,000,000	1,000,000	1,000,000	1,000,000	1,000,000
Japan	1,000,000	1,000,000	1,000,000	1,000,000	1,000,000	1,000,000
USA	1,000,000	1,000,000	1,000,000	1,000,000	1,000,000	1,000,000
Total	5,000,000	5,000,000	5,000,000	5,000,000	5,000,000	5,000,000

SEF ©UNFCCC 2009

Table 6. GHG emissions including LULUCF

Party	2008	2009	2008	2009	2008	2009
Australia	1,000,000	1,000,000	1,000,000	1,000,000	1,000,000	1,000,000
Canada	1,000,000	1,000,000	1,000,000	1,000,000	1,000,000	1,000,000
EU	1,000,000	1,000,000	1,000,000	1,000,000	1,000,000	1,000,000
Japan	1,000,000	1,000,000	1,000,000	1,000,000	1,000,000	1,000,000
USA	1,000,000	1,000,000	1,000,000	1,000,000	1,000,000	1,000,000
Total	5,000,000	5,000,000	5,000,000	5,000,000	5,000,000	5,000,000



©UNFCCC 2009